

Hawkesbury Parish News

July 2015 Issue

40p



Snakes, lizards, celebrity guests, press, councillors and children were all in attendance at our recent Grand Opening of the fantastic new free flow outside space at Hawkesbury Preschool!

We were delighted to welcome Wildlife TV presenter, Nigel Marven, famed for his role in the series, Prehistoric Park, and idolized by rather a lot of the children who attended the event, including the Preschool children and Reception and Year 1 from Hawkesbury School. Nigel kindly brought not only an extremely large snake, but a skink lizard too, which fascinated everyone! As he pointed out it is so important to encourage and introduce children to outdoor play. We hope that the area which we have created might help install a lifelong pleasure in playing in the great outdoors in all weathers. The area itself caters beautifully to our

Snakes Alive!

Preschool children and will enable them to explore a range of fun and exciting activities encouraging fine motor skills, literacy, mathematics, physical development and imaginative play whilst in a secure outdoor environment.

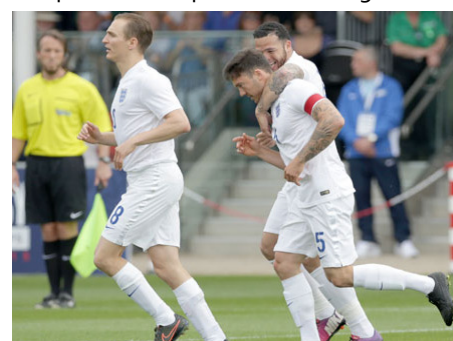
The whole process from concept to realization has been a fantastic community effort: Funding secured from two grants from South Gloucestershire Council, construction by John Walker from the village, local Waitrose staff assisting with decoration and many Preschool committee members plus their respective partners and children spotted painting, drilling, hammering and screwing. Thank you to them all. We really hope that the children of Hawkesbury Preschool and those of future generations will enjoy this space for years to come.

Cerebral Palsy Football World Championships 2015

James Blackwell from Hawkesbury Upton is currently representing England at the *Cerebral Palsy Football World Championships 2015* at St Georges Park, Burton, starting on the 13th June.

England have been drawn into a tough group against Ukraine, Iran and Japan but are confident of progressing from the group and further into the tournament. The World cup is acting as a pre-requisite for the Paralympics in Rio 2016 and England need to finish in 8th place or higher.

At time of going to press, England secured a convincing 14 - 0 victory over Japan, with James scoring two of those goals in the opening match. All games will be streamed live from June 16th – 28th, via the tournament website, www.cp2015.com. We'll provide an update in the August issue.



Inside this issue:

Editorial	Page 2
Diary Dates	Page 3
Youth Club News	Page 5
Gardening Club news	Page 7
Hawkesbury Show news	Page 8-9
Cricket Club Fixtures	Page 14
Tennis Club news	Page 15
Skittles Tables	Page 15
District Councillor update	Page 18
Church Service details	Page 20-25
Parish Council News	Page 26-28



PLEASE NOTE!! Copy deadline for August issue: Wednesday 15th July

Editorial

Fiona Writes...

Welcome to the July issue.

Summer is finally in full swing and it actually seems to have warmed up at last. The veg garden is going great guns with cucumbers and courgettes starting to pop out in every direction, along with baby broad beans and lush lettuces. Bliss! All we need now is for the strawberries to ripen in time for the obligatory Wimbledon Pimms!

After the tennis, we've an Ashes Test series to look forward to in July/August—with the usual gallows humour and hopefully a bit of good, old-fashioned jammy luck for the England team! At least we'll have plenty to fill those cucumber sandwiches by then! If

all else fails you can watch the intrepid Hawkesbury 1st and 2nd XI teams in action. Full details of July fixtures in this issue.

So, with Hawkesbury Show Day approaching at a rapid pace, there are many growing hints and tips in this issue, along with details of new classes introduced this year that you may wish to enter. Show schedules are now available in the Hawkesbury Shop and the Post Office, so let's see if we can't make the 130th event a bumper one. It could just be your turn this year to pick up one of the many sought-after trophies.

As usual in the village, there is plenty on this month. What could be better than a

Sunday afternoon of "Jazz on the Lawn" as organised by the Friends of St Mary's on 12th July? There is also an Evergreens trip to Sudeley Castle and Gardens on the 14th and an evening with the Winterbourn Down Morris at The Beaufort on the 6th July — surely the perfect antidote to the hectic pace of modern life!

Read on for full details and I hope you have a splendid July, filled with sunshine and entertainment.

Please note — the **deadline for the August issue** is the **15th July**.

All early copy is greatly appreciated.

Parish News Team

Hawkesbury Parish News is edited, produced and distributed entirely by volunteers. Advertising and subscription revenue covers the cost of production only.

Typesetting, Fiona Rowe
Layout, Editorial: parishnews@hawkesburyupton.com

Treasurer & Subscriptions: Vicky Rispin
vicky@coombeview.com

Editorial Team: Fiona Rowe
Vicky Rispin

Copy to: Fiona Rowe, 24 Sandpits Lane
Vicky Rispin, Coombe View,
High Street (next to the Village Hall)
parishnews@hawkesburyupton.com

Advertising: Jill Bendeaux
parishnewsads@hawkesburyupton.com

Distribution: Pauline Dixon 01454 299236
pcdixon@waitrose.com
Suzanne Flye

Printed by: Sprint Print,
22 Station Road, Yate. 01454 852255

Electronic copy always gratefully received — please save files in Microsoft Word or Rich Text Format (rtf). Only digital photos sent by email can be accepted.

Disclaimer

Any opinions expressed or implied within this publication are not necessarily those of the Editors. The Editors reserve the right to exclude any item whose authorship is not disclosed. No responsibility can or will be accepted for any opinion, comment or error of fact printed in this magazine. All advertising is included in good faith; its inclusion does not necessarily endorse the product or service.

Useful Local Info



Hawkesbury Village Shop

Opening Times

Mon - Fri - 8am - 1pm, 2pm - 6pm

Saturday - 8am-6pm

Sunday - 8am-12:30pm

High St, Hawkesbury Upton. Tel: 238639



Hawkesbury Post Office

Opening Times

Mon: 9am-2pm

Thurs: 9am-1pm

Tues & Wed: 9am-12pm

Fri & Sat: 9am-5pm

Back Street, Hawkesbury Upton, GL9 1BB

Tel: 01454 238341 www.hawkesburyuptonpostoffice.co.uk



Postal Collection (opposite shop)

Mon-Fri: 4:45pm / Sat: 10:30am

Did you know that we have Websites for the Village and also for the Village Hall?

www.hawkesburyupton.com and www.village-hall.org

You can use these websites to:

- Check the Hall & Village calendars
- Book the Hall online
- View the Hall & Parish Council minutes
- View past editions of this magazine
- Link to many other village organisations
- and much more.

Quote of the Month

A perfect summer day is when the sun is shining,
the breeze is blowing, the birds are singing,
and the lawn mower is broken.

-- James Dent



DATES FOR YOUR DIARY



Next Parish Council Meeting

The next Parish Council meeting
will be on **Mon 6th July 2015, 7.30pm**
in **Bethesda Chapel, Park Street** (changed venue).



Mobile Library

Times & Dates

13th & 27th July

Hawkesbury Village Hall	2.35 - 3.00
Hawkesbury War memorial	3.05 - 3.20
Hawkesbury Highfields	3.25 - 3.40



Coffee Mornings

Coffee Mornings take place on Mondays
from 10am - 11.30am.

At Peggy Woffenden's house

Tea, Coffee and a biscuit or two for 50p.
All welcome.



Evergreens

Tuesday 14th July

A Trip to Sudeley Castle and Gardens

Leaving outside The Fox at 10am

If you would like to come along
and need a lift please give me a ring.

Mandy 01454 261436

Hawkesbury Local History Society

'CURIOUS, QUAIN AND QUIRKY GLOUCESTERSHIRE'

Village Hall, Friday 17th July, 8.00pm

ALL WELCOME

Members £1.50

Visitors £3.00

Friends of St Mary's present...

Jazz on the Lawn

Sunday June 12th

at Church Farm House, Hawkesbury
(opposite St Mary's Church)

1-5pm

Pimms, beer and food available
or bring your own picnic.

Tickets (in advance please) from

Linda on 01454 238554 or Pauline on 01454 238307.

£10 (children free)



SMALL, FRIENDLY YOGA CLASSES

with Joan Boulton

at the Methodist School Room, Back Street

Thursdays 10-11.30am

All ages and abilities. Just £6 a session

More details call 01454 238044

26TH HAWKESBURY OPEN GOLF TOURNAMENT

SATURDAY 8TH AUGUST 2015

AT CANNONS COURT
GOLF CLUB

POP THE DATE
IN YOUR DIARY NOW!



Hawkesbury Cricket Club

Rounders Day

Sunday 30th August. 10.30am

at the Cricket Field

A fun day for all ages and capabilities,
even toddlers! There will be a BBQ
and a bar for refreshments.

BUILDER'S RUBBLE, DEBRIS, GARDEN WASTE...

Any old junk cleared and hauled away
I can do the job at less than it would cost to hire a skip...
AND you don't have to load it!

Call TOM COLE on 01454 238896
MOBILE: 07970 911412



PUMPKINS NURSERY

Badminton and Tormarton

Nursery care and pre-school education
catering for children aged 1 - 5 years

Open all year 8am - 6pm

Nursery Education Grant funded sessions available

Forest School sessions run at both settings

For more information or to request a prospectus
contact Amanda Wallis on **01454 219400/218747**

Or visit our website: www.pumpkinsnursery.co.uk

Love live music? come and see..

BlackStag

**Bank Holiday Sunday 30th August
from 7pm**

In the Hawkesbury Show Marquee

Tickets: £8 in advance or £10 on the door

All sold tickets will be entered into to a free prize draw

For tickets call or text Mel on 07788752689 or email stoner610@hotmail.com

Tickets are also for sale at Hawkesbury Farm Shop

See our facebook page: Black stag in the Hawkesbury show marquee



All proceeds in aid of Hawkesbury preschool & Toddlers

FOUND

**Scooter
at the skate park in the Rec.**

Tel: Sally 07510516050
or 01454238316

Young Hawks After School Club



We aim to provide quality childcare at an affordable price and to offer a place where children can play freely and interact socially in the care of trained staff

Welcome to Hawkesbury After School Club.

We are a charitable company, based within Hawkesbury CE VC Primary school and offer affordable childcare to the children of Hawkesbury and its surrounding area. We provide a safe, welcoming environment where children are able to interact socially and further their knowledge through play and their interests. We provide a wide range of resources and activities to support each child's individual interests and level of development. We offer planned activities, however children are encouraged to choose the direction of their play and are supported by staff in their choices.

HOURS: 2.30pm until 6pm. Monday to Thursday

For further details please contact Louisa Tooker (Manager/Senior Playleader) on the contacts below during after school club hours. Otherwise contact the school office (during school hours) who will be happy help.

Tel: 07527 224741 email: louisa.tooker@hawkesbury.org.uk

Registered with Ofsted
number: EY429151

Registered Company number:
07217551

Registered Charity number:
1144048

SEVERN VIEW FARM — Sold on Taste —



**Boarding Cattery
01454 299471**

Warm, comfortable, secure holiday
accommodation for cats.

Special diets and medicines
catered for

Severn View Farm Lamb Packs

Whole or half lamb packs
from our organic Shetland
Sheep.

£12.00 per kilo prepared weight.
Expect about 3.5 kilos for half a lamb.

Call Pauline on 01454 299236 or
Email pcdixon@waitrose.com



PEGASUS HEATING AND PLUMBING

OFTEC Registered C8787
GAS SAFE GAS INSTALLER No 68606

- ♦ Oil, Gas and Solid Fuel
- ♦ Installations and Repairs
- ♦ Bathrooms and Kitchens
- ♦ Domestic and Commercial
- ♦ Lead work specialist

ALL WORK GUARANTEED

Tel 01454 327708 Mobile 07860 471232

Hawkesbury Youth Club News

Given that schools break up so early this year, and we meet only during term-time, we'll be having just the one meeting this month, on Tuesday 14th July, when we're hoping to have an end-of-term picnic party.

Over the summer holidays, the committee will be working on developing our new Cafe in the Cupboard, transforming our large storage space under the eaves, and also, in collaboration with the Hall Committee, redecoration plans for the upstairs meeting room.

Huge thanks to all the adults who have helped our village Youth Club have an excellent year, with

membership rising steadily. Thanks to leaders Becki Spokes, Andy Davis, and Tom Weston, to volunteers Paul and Mary Broad; to the committee, who take care of the important business side of things behind the scenes; and to everyone who has donated time, money or materials to help our organisation go from strength to strength.

We wish all our members a very happy summer holiday and look forward to welcoming them all back on Tuesday 8th September to start the new term. Any new Year 6s who turn 11 in the autumn term are warmly invited to join us.

Debbie Young, Youth Club Leader



Please note from
Wednesday 2nd
September 2015
Hawkesbury Preschool
will be on the following:
Tuesday, Wednesday,
Thursday & Friday
from 8.45am - 12.30pm

Hawkesbury Upton Literature Festival

Huge thanks to the Village Show Committee for allowing us to provide a mini pop-up litfest at this year's Show. Come along to our tent, at the top of the rec near the Friends of St Mary's Pimms tent.

Meet and chat to visiting authors, hear them read from their books, and buy signed copies.

Bring your kids to join in some fun free events for children, led by children's authors and illustrators.

Buy a copy of our new anthology featuring all the authors who took part

in the first HULitFest in April.

Find out how you can take part in an exciting new literary project in the village - "What St Mary's Means to Me".

Find out more about the 2016 event, which will take place on Saturday 23rd April 2016, with fun for all the family.

For more information about the Hawkesbury Upton Literature Festival, visit our website: www.hulitfest.com.

For details of the "What St Mary's Means to Me" book project, visit the Friends of St Mary's www.fosmhawkesbury.co.uk

Debbie Young, Festival Founder



Please note from
Monday 7th
September 2015
Hawkesbury Toddlers
will be on
a Monday
from 9.45am - 11.45am



Calling all teenagers!

Are you looking to earn some money in the evenings or over the summer?

Send us your contact information, including age, phone number and a few details and we'll add you to the list of babysitters, dog walkers, and pet sitters. Remember to get your parents' permission first!

Email: parishnews@hawkesburyupton.com



Would you like cash for something round the home that you no longer want/need/like?

Well, why not sell it on **ebay**?

I have been active on ebay since 2001 and my 100% positive feedback is as a result of more than 800 deals. For a percentage I will deal with everything including taking photos of the item, setting up the auction on the ebay website, dealing with any queries from buyers, receiving the sale proceeds and posting off the item for you.

Some items might attract a better price at a local auction house, and dealing with this is another service I can offer.

You can set the starting price and if required, set a reserve price. Any questions, call me on 238778, email me at mickbendeaux@hotmail.com or come and see me at 20 Birgag Road.

ANTHONY HARCOURT OSTEOPATH & ACUPUNCTURIST

Please note change of address:

111 Horse Street
Chipping Sodbury BS37 6DF

Tel: 01454 326256



Walk Saturday 1st August 2014

Let's get out and enjoy the sunshine! It was certainly beautifully sunny as this was being written, but regardless of the weather; why not join us for another fantastic walk around the area.

On a clear day there is nothing that can beat the great views around Hawkesbury and Horton so this walk will make the most of this amazing reason for enjoying this great place we live in. With one steep climb, this moderate 4 mile (6.5 km) walk that starts on the Cotswold plateau with good open views across to Wales. We will then drop down to the village of Horton with its ancient church and historic Horton Court finally rising steeply back to the plateau.

We will be starting at the village hall car park where we meet at 10.15 am for 10.30 am start so that we can get back by lunchtime. Dogs are always welcome on our walks and this one is no exception.

We want to make the most of the summer so the walk will be followed by a barbeque at The Beaufort Arms by kind permission of Mark Steeds.

If you would like to receive email notification of future walks, please contact Jane Jones on rightsofwaygroup@hawkesburyupton.com or telephone 01454 238633.

Brian Halse 1969 - 1973

Hi,

I used to live in Hawkesbury Upton between 1969 - 1973 and I'm looking to connect with ex-friends.

Richard & Anthony Leonard, Cyril & Phil Davidson, Fiona Dix (Halse), Mervyn Dix (Fiona's Brother).

My email address is halsebrian@yahoo.com and I now live in Southern California.

If you knew me, then please get in contact.

Brian Halse

Thank You

Janet and Alan Porter and family would like to thank everyone for their kind messages of sympathy, cards flowers and generous donations to the Alzheimer's Society following the sad passing of Lyn and Mike Wood. They will be greatly missed.

The Farm Shop at Hawkesbury

A J Morgan Farm Produce, France Lane Farm,
Hawkesbury Upton, GL9 1AN

Home Reared Pork, Lamb & Aberdeen Angus Beef
Free Range Poultry, Home Made Produce.

DO YOU KNOW WHERE YOUR FOOD COMES FROM?
TRY US-BUY LOCAL - We're NOT expensive!

Shop open 10am-1pm weekends.

Free local deliveries. Contact Karen 07929 947149



THE HEALTH SHOP

27a Horse Street, Chipping Sodbury
BS37 6DA. Tel: 01454 322168

Range of wholefoods including: special diets,
Dried fruit and nuts, herbs and spices,
Herbal and homeopathic remedies,
vitamins and supplements,
aromatherapy oils,
Bach flower range



TROWEL & ERROR

HAWKESBURY GARDENING CLUB

www.hawkesbury-gardening-club.org.uk

Meetings are held at 8pm on the 4th Monday of the month in the Methodist Hall in Back Street.

Instead of a meeting in May we went by coach to Hestercombe Gardens near Taunton and a very nice day was had by all. I heard whispers by some about 'Ooh! I really do covet those daisy type things growing in the walls' and 'Here, Pat, what are those nice things with the spikey leaves?'. I didn't actually see anyone snaffling samples to take home but I'm not saying it didn't happen.

On Monday 6th July we will be going on an evening

visit to Wyndcliffe Court near Chepstow and for our July meeting on Monday 27th July we will be going on an evening guided tour of the Bristol University Botanical Gardens. How do we fit it all in?

If you are not a member but would like to hear a speaker that takes your fancy then come along as a guest – fee £3.00. For further information contact Terry Truebody on 01454 238364



THOSE WERE THE DAYS

By Alan C. Porter



There's nothing like a weekend at the seaside to blow the mental cobwebs away and recharge the batteries. The smell of seaweed, crash of waves, incontinent seagulls... but there is one vital part of the coastal experience missing. Fish and chips wrapped in newspaper! Gone now is the newspaper, replaced by those ghastly little white or brown, polystyrene boxes and wooden fork.

To peel open a copy of the Daily Mirror or the Sketch, for those who can remember that venerable publication, to reveal a pile of golden chips and chunk of battered rock, another blast from the fishy past, covered with a liberal dusting of salt and dripping in vinegar, was a journey into food paradise.

The sight of a white aproned chippy piling the chips and fish onto a greaseproof square, that was deftly folded after adding a good dollop of salt and vinegar before finally being wrapped in a sheet of current news was enough to get the juices flowing. The wrapping and folding was an art form in itself.

The final part of the glorious food adventure was when the vinegar dripped through the newspaper and ran down your arm as you walked along the prom. There was no wooden fork, newsprint stained finger were the order of the day.

As Mary Hopkin sang, "Those were the days, my friend," and they were.

Win Duncan

On behalf of the Parish News and our readers, sincere condolences to Penny, Howard and John on the sad passing of Win Duncan on 15th May at Beaufort House.

Our thoughts are with the family at this sad time.

Paul Broad was coming to the end of a long afternoon working on his allotment at the back of Birgage when he noticed a piece of string attached to something. This was odd he thought, because Mary had taken the ball of string back to the house several hours earlier. So, intrigued, Paul followed the length of string. It went all across the allotment

Have you tried "StringNav" yet ?

and over the fence at the back. Paul climbed over the fence and followed the string through the field and up the footpath, around to the rear of their garden and through their back garden gate. He followed it through their garden into their kitchen, where he found.....a much smaller ball of string !!! Well, he didn't want Mary getting lost, did he ?

Dick Blundell

- Physiotherapy
- Homeopathy
- Podiatry
- Chiropractic
- Aromatherapy
- Reflexology
- Acupuncture
- Holistic Massage
- Sports massage
- Nutritional Advice
- Pilates Exercise Classes

TOLL HOUSE CLINIC

Freephone 0800 0936 362 Telephone 01454 32 22 32
www.tollhouseclinic.co.uk
 47 Horse Street, Chipping Sodbury, BS37 6DA



PLUMBING
AND HEATING

BOILER
SERVICE &
SYSTEM
MAINTENANCE

FOR OIL BOILER AND AGA/RAYBURN SERVICE

Tel: 01666 504911 or 07867 434345
or email:

info@indplumbingandheating.co.uk

OFTEC REG. NO: C4634
 Grant Boilers Accredited Installer
www.indplumbingandheating.co.uk

Gardening Thoughts for July

Potatoes

If potatoes are being grown, the gardener should be aware that potato blight is not uncommon in this area, and protection should be given to the potato haulms right now. In my experience, the most effective treatment has been Dithane 945 and this is available online. For the organic gardener there is a compound called Bordeaux mixture which is somewhat less effective, but acceptable to the Soil association who oversee organic treatments. As tomatoes are of the same family as potatoes, these should be treated also, if grown outside in the vicinity of potatoes.



Greenhouse tomatoes

Indoor tomatoes should be coming on well now and need to be looked after in terms of watering and feeding. It is difficult to be specific in terms of amounts of water but the plants need to be kept moist and watering should be done on a regular basis rather than now and then when somebody remembers. If watering is not regular the plants can develop a disease called blossom end rot, which shows itself as a dark "corky" spot on the end of



the fruit rendering it inedible. Feeding begins with one of the propriety tomato foods, as soon as the tiny tomatoes appear where the flowers were,

Watering in general

During drier periods, we're all capable of thinking the plants in the garden need our help a bit more than they actually do. If watering is to be carried out, it needs a bit of thought as to what is the most sensible and necessary. It takes a 1 inch depth of water to sink 9 inches into soil or compost so this gives an indication as to what would be needed to get to the roots of all the garden plants. New plants need watering in so that the soil, which is going to be their supplier of food and water, is washed in to make contact with the roots. Apart from this, if the established plants are to be watered at all this should be done infrequently but with a heavy dose. This encourages the plant roots to go deep in their search for water. If the plants are constantly watered lightly, the roots are attracted to the surface looking for water, and can dry out. It's not a bad idea therefore, to dump the hosepipe in favour of the watering can, so that a check can be kept as to what each plant is receiving. It



is difficult to be specific as to how much water indoor plants need as this can depend on position, weather, size of pot etc. but suffice to say that roots should be kept in moist compost but not stood in water. For greenhouse watering, the best time to do this is early evening, as the surface water just evaporates away if done in the heat of the day.

Lawn care

The lawn takes a bit of hammering in summer with frequent cutting and drying out as well as being walked on more than usual. For these reasons it's a good idea to give the grass a good feed if one has not already been administered



Conservatory plants

Many indoor plants will benefit from a holiday outside during the warmer weather, as long as their temperature tolerances are checked

Asters

If anyone is growing asters now is the time when they become vulnerable to an airborne fungal disease called aster rust. This needs to be caught early and is easily treated with any of the common fungicides



Brian Noble

Made to Measure Curtains & Blinds



Curtains and Blinds

Choose in the comfort of your own home

Call Grant on

t: 01453 521751 m: 07799 822691

Charfield • Wotton-under-edge

A local service with 25 years experience



Hawkesbury Village Hall

Mon, Weds,

Thurs & Fri

8.45am-12.30pm

All children welcome from 2 years

Please contact us on 07989 484 774

enquiries@hawkesburypreschool.org.uk

Charity number 1013170 Ofsted Registered 136003

A REMINDER for HOME-BREWERS.....



Hopefully many of you have already got a few bottles of earlier brews stashed away to come out on Show day for the **Home-brewed Beers Class**.

If you are going to enter your beer in the **Home-brewed Beers Class in the Village**

Show July is really the last month available for a brew to mature to excellence on Show day. And the earlier the beer is brewed in July the more time it has to mature.....

Many home brew kits are specially formulated to mature quickly to produce a first class beer, so whether you are an experienced home brewer or a first timer, - **Get a Kit and HAVE A GO!!** - and let's cover the table with our brilliant beers on Show day.

A quick Reminder of the **Rules**:-

There will be 4 sub-classes, based on colour:-

- **Lager / Blonde**
(straw coloured)
- **Pale Ale / Golden**
(pale to dark gold)
- **Bitter**
(dark gold to chestnut)
- **Porter/ Stout /Mild**
(dark red to black)

- Beers must be home-brewed, and presented in 500ml clear glass bottles (crown-capped, spring-capped or screw-capped), and labelled with a tied-on label around the neck indicating the sub-class.
- **Judging** will be by our **National Prize-winning** local experts **Mark Frankcom** of **Cotswold Spring Brewery** and **Steve Mc Donald** of **Severn Vale Brewery**, who together form the **Combined Brewers**.
- The judges will take into consideration the following **key aspects of a good ale**:-
 - **appearance in bottle**
 - **pour and condition (i.e. gas),**
 - **smell,**
 - **taste, &**
 - **finish.**

If you want or need any further information about the competition, or if you are interested in brewing your own beer, please get in touch with me, Chris Chubb, chris@chubbs.co.uk, Mobile:- 07554995671.

Happy Brewing !and even Happier Drinking!!

Chris Chubb

Hawkesbury Horticultural Society 130th Annual Show. Saturday 29th August 2015

The Show Committee would like to extend their grateful thanks to the Hawkesbury Parish News which has once again sponsored the cost of printing the schedules for the Show.

Putting on the Show costs a lot of money and we are always most grateful for any form of sponsorship, this is the third year that the Parish

News has supported us in this way and we are most grateful indeed.

So thanks to Vicky and Fiona and all the Parish News team for their generosity.

Dick Blundell.
Hon Show Treasurer.

DID YOU KNOW...?

Hawkesbury Show not only has its own website:

www.hawkesburyshow.org

...but now we have our very own Facebook page to keep you up to date on what's happening on Show Day and in the run up to it.

<https://www.facebook.com/pages/Hawkesbury-Horticultural-Show/1638910279661360>

Blueberry Nails

Flexible, friendly, competitive and local mobile nail salon opening in Hawkesbury Upton and outlying villages. Catering to all ages and requirements ! Contact Hannah on 07583 392 272 to discuss individual nail needs.

Please visit www.blueberrynails.net for treatments and price details (website & client email address are still under construction!)

I look forward to hearing from you!



R&B

VEHICLE SERVICES

Est. 10 years

01454 238700

REPAIRS, SERVICING
 DIAGNOSTICS, BATTERIES
 TYRES, EXHAUSTS
 FOR CAR, 4 X 4 & LIGHT VANS
 FREE LOAN CARS AVAILABLE
 YOU CAN NOW BOOK YOUR MOT
 ONLINE AT
www.mottetbury.co.uk

COST EFFECTIVE MAINTENANCE AT A FRACTION OF DEALER PRICES
 CALL RICHARD OR BEN FOR FRIENDLY, RELIABLE SERVICE



WINTERBOURN DOWN BORDER MORRIS

Performing here for your amusement and entertainment, the perfect English evening awaits. Expect bells, tatter jackets and fanciful costumes. The dancers will clash sticks and step to the traditional music played robustly by our musicians...a live performance not to be missed!

HERE AT THE BEAUFORT ARMS

MONDAY 6TH JULY 2015

APPROXIMATELY 8PM

DEB'S CELEBRATION CAKES

Individually designed cakes for weddings and special occasions

Workshops - have a go yourself and learn a new skill

Please contact me to find out more, discuss ideas or see my work

DEB PIDSLEY 01453 834394
07890292125

www.debscelebrationcakes.com

FIREWOOD

Dry seasoned hardwood logs, delivered cut and split to your requirements.

We also sell kindling and coal.

Lower Kilcott Farm
Call Steve Thompson
Home: 01454 232941
Mob: 07974 194012

NE odd jobs

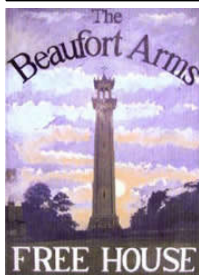
A fully insured, professional and reliable service

- Garden maintenance • Cleaning
- Weeding, grass cutting • Painting

... as well as all those other little jobs you just never seem to get around to.

Call: Nicola Evered

07947 072780 or 01453 844124



Morris Dancers at The Beaufort

That greatest of English traditions, Morris dancing, is coming to the Beaufort again this July. All are welcome.

Hawkesbury Quiz League 2014-2015

Shown here are the 'Teachers' Pets' side, Pat, Jen, Vicky and Jill holding the coveted 'Brain' prize to mark their winning the 2014-2015 Hawkesbury Quiz League.

The prize was given at the League's end of season meal at the Beaufort where the wooden spoon accolade was accepted by Jane of 'In the Cheap Seats' – the only member of that team brave enough to turn up.

'In the Cheap Seats' in fact tied in last position with 'Da Boyz' and lost out only on a tie break. The League, which this year had 12 rounds, was

Beaufort Arms News

keenly fought with 'Titter ye Not' being the early leaders until finally coming in second.

'Almost Half' and 'In the Cheap Seats' also won on different occasions. The quiz itself is not easy and I think all 7 teams did exceptionally well with some great

performances from everyone.

Huge thanks to Gill Carey for all of her hard work in keeping the Quiz on an even keel (and to Adge for standing in as quiz master when required) – roll on next season!

Mark Steeds the quizzical pub landlord



Win Duncan

We would like to thank everyone for all the lovely cards, flowers and letters we received after Mum passed away on the 15th May. Thank you to everyone who joined us for her funeral, and for the donations for St. Mary's Church and Evergreens. We would like to say a special

'Thank you' to all the Staff at Beaufort House, who took such good care of her. We also would like to thank everyone in Gate 32A at Southmead Hospital, for their care and kindness to both Mum and ourselves.

Thank you.
Penny, Howard and John.

Fri 10th and Sat 11th July 20th South Cotswold Beer and Music Festival

Chipping Sodbury RFC

Tickets for the 2015 South Cotswold Beer and Music Festival are now on sale at Meredith's Hardware, Yate Shopping Centre and The Tourist Information Centre, Chipping Sodbury.

Ticket prices for 2015 are as follows:

Friday 11th July - £8.00

Saturday 12th - July £14.00

For more information:

www.bs37.com/beer

T. F. BLEAKEN CARPENTRY & BUILDING CONTRACTOR

FIRST & SECOND FIX CARPENTRY
BESPOKE JOINERY
TRADITIONALLY CUT ROOFS
FITTED CABINETRY
BESPOKE KITCHENS & BATHROOMS
RESTORATIONS & RENOVATIONS
BUILDING EXTENSIONS & CONVERSIONS

IF YOU HAVE ANY QUESTIONS OR WOULD LIKE A QUOTATION FOR YOUR POTENTIAL CARPENTRY OR BUILDING PROJECTS, PLEASE DO NOT HESITATE TO CONTACT ME.

KIND REGARDS

THOMAS FREDERICK BLEAKEN

TELEPHONE: 07885838922 E-MAIL: t.f.bleaken@hotmail.co.uk



BonneFreshClean
Carpet & Upholstery Cleaning Specialists

Call for a free, no obligation quote today!

Love the look and smell of clean and fresh carpets and upholstery?

Bonne Fresh Clean brings to you a professional carpet and upholstery service that will leave them sparkling and fresh.

- Thorough deep cleaning, no residues
- Child and pet friendly treatments
- All-female team ensures special attention to detail and superb results
- Fully qualified and insured

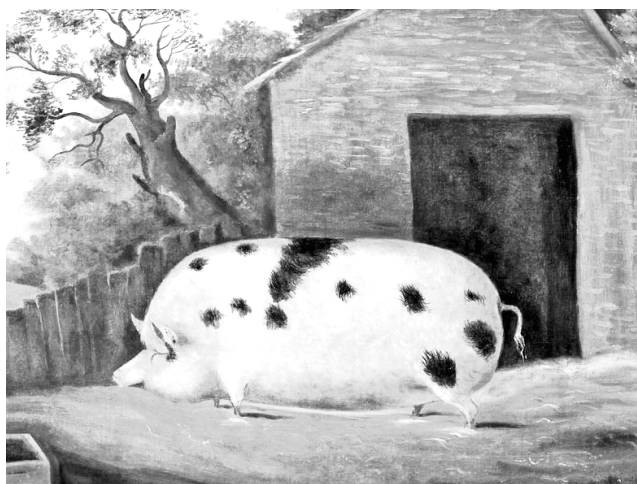
VISA MASTERCARD AMEX

NCCA
NATIONAL CARPET CLEANING ASSOCIATION
ASSOCIATE MEMBER 2014

Bonne Fresh – Relax and enjoy beautifully clean and fresh carpets and upholstery!

T: 01454 436001 M: 07774 908410
W: www.bonnefreshclean.co.uk
44 Townsend Lane, Almondsbury, Bristol, BS32 4EQ

Hawkesbury Local History Society



What better image could we find to sum up the title of Angela Panrucker's forthcoming talk than this 1834 painting of a Gloucestershire Old Spot pig 'said to be the largest pig ever bred in Britain'?

Angela, a popular speaker, will entertain us with her richly illustrated talk depicting the many curiosities to be found around the old county of Gloucestershire.

'CURIOUS, QUAINT AND QUIRKY GLOUCESTERSHIRE'

Village Hall, Friday 17th July, 8.00pm

Members £1.50

ALL WELCOME

Visitors £3.00



Rainbow leader and helper needed from September 2016

RAINBOWS

We need someone to take over running 1st Hawkesbury Rainbows as well as a helper.

You need to be over 18 and be full of enthusiasm to help girls develop and have fun. We have around 20 girls aged 5-6 at the moment.

The unit runs at present on Wednesdays during term time from 4-5pm in The Methodist Church School Rooms, but guiding is flexible, you may only be able to do once every other week - everything helps!

You will get lots of support and training.

If you are interested or want to find out more please get in touch with Louise Roberts 01454 238628.



CHIM-CHEROO
PROFESSIONAL CHIMNEY SERVICES

- Woodburners, open fires, Agas etc
- Member of the Institute of Chimney Sweeps
- Fully insured
- CCTV inspections
- Blockages removed
- Safety certificates issued
- No mess

Hire a lucky sweep for your wedding!

Richard Stone
07805 330 961
chimcheroosweep@yahoo.co.uk
24 Gloucester Street, Wotton-under-Edge, Gloucestershire, GL12 7DN

Hayley Jackson MCFHP MAFHP Foot Health Professional

A small well established business based in Brimsham Park, Yate.
A full range of Foot Health Treatments including:

- Nail Cutting
- In growing Toenails
- Verrucae
- Corns and callus
- Heel Fissures (Cracked Heels)
- Nail conditions

Tel 01454 314460/07846452000

www.hjtherapies.co.uk / Email: hayley@hjtherapies.co.uk

Home Service now available

Introductory offer - £10 off your first treatment

Hawkesbury Horticultural Show 2015

Saturday 29th August 12.30 – 9.00pm

The 2015 show schedule is now available in the Village shop and also in The Post Office, same price as last year, 50p

Buy **your** copy and start planning which classes you are going to enter. Full details are included as to how to display horticultural exhibits.

Please note that this year, some classes have been merged, some new classes have been added and some class descriptions have changed. Look out for * which indicates a change from last year

New for 2015

- 4 classes for home brewed ales (Lager, pale ale, bitter and stout)
- The Bill Burdon Memorial Bowl for the best original piece made from wood (turned or carved)
- A Family Favourite cake – any cake, any flavour

Please make sure that your exhibit adheres exactly to the class description as detailed in the 2015 schedule.



Schedule for the
**130th HAWKESBURY
HORTICULTURAL SHOW**
Saturday 29th August 2015 12.30 – 8.00pm
*At the Recreation Ground & Village Hall,
High Street, Hawkesbury Upton GL9 1AU*



*This schedule includes exhibiting rules,
a full list of classes and entry forms*

www.hawkesburyshow.org

Sherston Market dates for summer 2015

Saturdays 10 am to 2pm,
4th Jul 8th Aug 5th Sept
Stallholder enquiries can be made
by PM or email to info@awkwardsquad.co.uk
<http://www.sherstonmarket.co.uk/>

The Wisdom of Mark Twain

“If you tell the truth you don’t have to remember anything.”
“Man: a creature made at the end of the week’s work when God was tired.”
“The public is the only critic whose opinion is worth anything at all.”

just sew mary – sewing bee!

Come and get creative! Stitch, patch, sew and quilt
Learn new techniques, share tips and laughter!
2nd Tuesday of the month 7-9pm at the
Methodist Hall
For details and to reserve your space contact
Mary Chancellor 07592006440
justsewmary@hotmail.co.uk

The Fleece Inn, Hillesley

A thriving, friendly local pub, under community ownership
– a Free House offering local real ales



Open from midday, 7 days a week



Good quality food at sensible prices available lunchtimes and evenings. Parking, Beer garden &, play area.
Sue-Alice & her team would love to welcome you to The Fleece

www.thefleeceinnhillesley.com

01453 520003

HAWKESBURY CRICKET CLUB – JULY 2015 FIXTURES

1st XI Fixtures 2015

Date	Opposition	Home or Away	Start time
04/07/2015	Ullenwood Bharat	Away	1:30pm
11/07/2015	Fairford	Home	1:30pm
18/07/2015	Kings Stanley	Away	1:30pm
25/07/2015	Great Rissington	Home	1:30pm
01/08/2015	Hatherley & Reddings 3rds	Home	1:30pm



2nd XI Fixtures 2015

Date	Opposition	Home or Away	Start time
04/07/2015	Charfield	Home	2:00pm
11/07/2015	Cam	Away	2:00pm
18/07/2015	Painswick	Home	2:00pm
25/07/2015	Stroud	Away	2:00pm
01/08/2015	Hardwicke	Away	2:00pm

Please Note: Hawkesbury Cricket Club Presentation Night – 19th September 2015

Hawkesbury Cricket Club/ Dates for your diary 2015

Rounders Day, Sunday 30th August. 10.30am at the Cricket Field

A fun day for all ages and capabilities, even toddlers! There will be a BBQ and a bar for refreshments.

Teams of 10 each with a Team Leader need to register at the Pavilion at 10.30 for an 11am start.

Why not make up a team from your street, road, or close. If you cannot make up a team of 10 do not worry as we can fit several small teams together. Contact names will be passed to all HCC members in July, and circulated in the village.

Cricket Club Presentation Night Dinner, Saturday 19th September at the Village Hall

A celebration to mark the end of our playing season. A dinner will be followed by the presentation of club awards for outstanding performances, both on and off the field. The evening will conclude with a DJ and dancing. A licenced bar, and wine bar is included. Tickets will on sale in July at £10.00 each. Members will be notified by e-mail which members to contact to purchase tickets.

We thank you for your usual generosity in supporting these functions.

Baz Philpott, Social Secretary (e-mail barryphilpott@hotmail.com)

M G COUNTRYSIDE DEVELOPMENT

Fencing, Tree Surgery, XC courses,
Landscape Gardening, and Fire Wood

Miles Batten	07866486808
Giles Bleaken	07976562323
Website:	www.m-g.org.uk
Email:	miles@m-g.org.uk

Based at Upper Chalkley Farm, Horton
Other jobs available upon request



**COUNTRY
PROPERTY**

theauctioneer.biz
PROPERTY AUCTIONEERS

Nick Cragg FRICS FNAEA

01454 321339

Specialist Property
Sales Lettings Consultancy
South Gloucestershire

www.countryproperty.co.uk



HAWKESBURY UPTON TENNIS CLUB

JULY 2015

We are delighted that people are using the courts more but would respectfully request that, those who are not members, even if playing with a member, place their court fees in the Honesty Box. Maintenance of the courts is expensive and we rely on memberships and court fees to cover this.

We would also like to appeal to anyone who has not renewed their membership to please return their keys as we need them for new members. If you have a key please let us know and we'll arrange to collect it from you.

Club Nights on Mondays and Wednesdays are proving to be more popular now; with the warmer weather it's a very enjoyable way to spend a couple of hours in the evening from 6.30pm. Don't hesitate to just turn up if you have a free half an hour and see what you think. You never know you might just enjoy it! We would particularly like to welcome our new members on Club Nights as we haven't seen many of you yet.

Thank you.

Court Keys for non-members are available from:

Tricia – 01454 294768 Barbara – 01454 238569

Summer Skittles 2015

League tables

	<u>Played</u>		<u>Points</u>		<u>Won</u>	<u>Draw</u>	<u>Lost</u>		<u>Average per</u>
Brats	7		107		6		1		15.29
Hornets	9		100		4		5		11.11
Rats Pack	5		98		5				19.60
Cream Teas	7		91		5		2		13.00
Winkers	8		65		2		6		8.13
Beaufort Pingers	7		59		2		5		8.43
Old Foxes	4		54		3		1		13.50
Spooners	7		20				7		2.86

The Roper Trophyette

Hornets	9	221	24.56
Winkers	8	198	24.75
Brats	7	193	27.57
Cream Teas	7	184	26.29
Beaufort Pingers	7	162	23.14
Spooners	7	151	21.57
Rats Pack	5	141	28.20
Old Foxes	4	99	24.75





Our Garden
Meeting held at
Holly Cottage,

Hillesley, in June, proved to be a windy one with the threat of showers. However our host Melanie Gibbs planned a Treasure Hunt and we managed to fit it in, and an exploration of her interesting garden, before retiring for refreshments in the Baptist Chapel next door.

For many of us seeing inside the Chapel for the first time was very special as the historic building has been beautifully restored and is used regularly by the school.

The NFWI AGM held on the 4th June at the Royal Albert Hall was a very special one, celebrating 100

Hawkesbury & Horton WI

years of the WI. Guest of honour was the Queen, accompanied by the Princess Royal and the Countess of Wessex.

Her Majesty has been associated with Sandringham WI since 1943.

In her speech the Queen said that in the century since the first WI groups were formed in North Wales and in Sussex, so much has changed for women in our society, she said the Women's Institute has been a constant throughout, gathering women together, encouraging them to acquire new skills and nurturing unique talents.

After receiving the WI Centenary baton the Queen cut the commemorative cake, and later said how much she enjoys a good fruit

cake. All the royal guests were presented with one to take home. It seems they are often asked to cut one but rarely get the chance to take one home!

Flower of the Month was won by Judy Chancellor with an Arum lily.

Diary Dates

7th July How To Wear A Sari
with Ila Shrimanker

NO MEETING IN AUGUST

1st September Royal Mail Guard
circa 1820 – Martin Horler

Competition Design A Postcard

Visitors are always welcome at our meetings on the first Tuesday of the month, 7.30pm in the Village Hall.

Betty Salthouse 01454 238410

THE HAWKESBURY SHOP



HIGH STREET, HAWKESBURY UPTON,
TEL. 01454 238639

Email: anneweston@interwales.com

Facebook: <https://www.facebook.com/TheHawkesburyShop>

Picnic season has arrived and Ice Cream time!

We have everything available for a perfect picnic –

A lovely selection of scotch eggs, pork pie and sausage rolls.

Meats available – our delicious chicken portions, salami and chorizo chubbs, and our fresh HAM, just ask you won't find any nicer! Put onto Hobbs bread, (available fresh each day except Wed/Fri).

Ice cream – if you have any requests let the girls know, we stock Marshfield for your large tubs -

We have had a request for fresh fruit/vegetable boxes to be delivered. This is from a local farm in Chew Magna, all organic! It looks like this maybe feasible but we need 15+ households weekly or fortnightly for it to be beneficial for the farm. I think it would be a nice idea and if anyone is interested please see Kate in the shop.

Hope you enjoy the first month of summer

MARK POWELL

DOUBLE GLAZING INSTALLATIONS & REPAIRS
WINDOWS – DOORS – CONSERVATORIES
SASH WINDOW REPLACEMENT SPECIALIST
MISTED UNITS, HANDLES & LOCKS REPLACED

LOCAL TRADESMAN

CALL MARK ON
01454 326804
MOBILE 07860 805197

Hardwood Logs

Dry, seasoned hardwood, barn stored.

Sold in dumpy bags

£60 per bag - 2 bags £110

Local free delivery

Call Tom Cole

Mobile: 07970911412

Home: 01454 238 896



BRITAIN'S GOT FAVOURITES

On first hearing that the robin had been voted Britain's favourite bird, I felt indignant on behalf of the blackbird who sings so beautifully from the apple tree outside my study window. Robins may be cute garden birds, hopping companionably close as we dig the garden, but I know that's only cupboard love: they're just waiting to grab a juicy worm.

Then it dawned on me that perhaps the real reason for the robin's triumph in the poll is that it has to be the most easily recognised bird in the country. It's probably the first bird people would think of if asked to name a British garden bird.

I suspect the same principle would apply to any similar competition designed to identify other popular native wildlife. Most popular tree? Most likely the conker or the apple tree, whose fruit make it so easy to identify, at least in the autumn.

Best butterfly? The peacock butterfly would have to be in with a good chance, the clue to its looks being in its name. I remember once as a small child I remarked while playing in the garden "Oh look, that butterfly looks like a peacock" and being puzzled when someone congratulated me on identifying it correctly. I had no idea there was such a thing as a "peacock butterfly", it's just that the creature's pattern had reminded me of that showy bird with fancy tailfeathers.

So, continuing in the same vein, what might be the nation's favourite native flower? In England, the rose, in Wales the daffodil. Scotland? Why, bluebells, of course.

What about aquatic life? Working on the principle that it's whatever is easiest to recognise, there's an obvious choice for Britain's favourite fish - let's hear it for the finger!

Debbie Young

www.authordebbieyoung.com

Shakespeare at Swinhay House – As You Like It

The stunning grounds of Swinhay House near Wotton-Under-Edge will once again open for a truly unmissable open air Shakespeare production. This year the all male cast of the Festival Players will be performing **As You Like It**, on Friday 3rd July 2015.

As in the Bard's time, an all-male company of skilled professional actors, playing in splendid period costume, invite you to share in the colour, poetry, and magical mayhem of this outstanding play, set to an original musical score by Johnny Coppin. Perfect entertainment for a summer evening.

This inventive and energetic production will be staged on the beautiful lawns of the contemporary country residence - **Swinhay House** (GL12 7PQ). With breathtaking, panoramic views of the surrounding countryside, a curving lake and spectacular sculptures, Swinhay is an idyllic venue for garden and theatre lovers alike; not to mention the perfect location for a picnic before the performance and a glass of something chilled. Licensed bar and hot drinks will also be available, as will plenty of on-site car parking.

The grounds of Swinhay House will open at **6pm** for picnics before the performance starts. The play will commence at **7.30pm**, please note that picnics are before the performance only and that the play is staged a short way from the picnic grounds adjacent to Swinhay house. Hot and cold drinks will be available in the interval. Please bring along chairs, blankets and picnics, plus suitable clothing for all weather conditions.

This magical and exciting theatrical experience is really not to be missed, so please book tickets early to avoid disappointment.

Tickets are priced at £15 (concessions £13) and are available from It Takes Two, Long Street Wotton-Under-Edge and online at www.utea.org.uk or by calling Under the Edge Arts on 07791 323869, booking is essential.

Fancy a break in North Cornwall.....?

Our apartment is adjacent to the North Cornish coastal path, with access to stunning beaches. With 2 bedrooms/bathrooms, it is our special retreat and has all the comforts of home.

For rental details, please contact Chris on 01454 232927 or email chrissav5@yahoo.co.uk.

EEZEEFLOW

DRAIN CLEARANCE

Drainage problems – private and domestic

NO JOB TOO SMALL
Regional Coverage

CENTRAL OFFICE

PHONE: 01454 238200

FREEPHONE: 0800 3893037

FAX: 01454 238713

To advertise your company
or services in the
Hawkesbury Parish News,
email us at :

parishnewsads@hawkesburyupton.com and
reach a wide local audience.

SOUTH GLOUCESTERSHIRE COUNCILLOR REPORT

The Council has held its first Council meeting, when the Committee structure was agreed, as well as the programme of meetings for the coming year. The Council make up is 40 Conservatives; 16 Lib Dems; 14 Labour; this is reflected in 7:3:3 representation on committees. The Council received presentations from the public on access to superfast broadband from Littleton and Elberton where residents are trying to run businesses, as well as pleas for Council support for public transport.

On the subject of Broadband – The Council has entered Phase 2 of the rollout of Broadband and they have also bid for more money from the West of England Partnership. There are still parts of the parish with no access to superfast broadband, however an early announcement is not anticipated.

All Council meeting agendas can be found on the website. I will be serving on the Adults & Housing Committee and the Public Health and Health Scrutiny Committee, as well as the Public Transport Forum. There are lots of training and induction courses being offered as there are many new

councillors.

I have circulated grant opportunities to local groups and organisations – all groups do have to be registered before making an application. Decisions on grants are made at the Area Forums by local councillors. The next forum is on the 9th July at Shireway Community Centre in Yate.

Public Transport.

I asked for the unreliability of our local No.86 to be raised, at the Public Transport Forum, apparently the Wessex director was not aware of any problems! He has gone back to investigate. Let us hope this results in a more reliable (and comfortable) service – please do let me know if there any further no shows or lateness of the service

Housing

I have received several enquiries about housing in Hawkesbury Upton. Anyone wishing to apply for any of the social housing in the village, including one of the bungalows in Highfields does have to be registered with Home Choice; these bungalows are not restricted to people living in the parish. The Council assesses the applicant into one of three

bands A; B; Registered – A taking priority over B and those registered. The amount of time you have been on list can contribute to the criteria and means the longer you are on the list, the more likely you are to be offered a house, with those assessed as A or B taking priority over others. However there is usually high demand for all houses in Hawkesbury Upton.

The final decision on who is offered a house - in this case- is made by Merlin Housing Association. There are houses in Highfields and Birgace Road which, in the first instance are restricted to a local connection; there is a cascade approach should there be no local applicant. All those interested in these homes MUST be registered with Home Choice.

If you need further help and advice, please don't hesitate to get in touch,

The Parish Council were intending to carry out a further Housing Needs Survey, and is a matter to be discussed by the new Parish Council

Cllr Sue Hope 01454 238673
sue.hope@southglos.gov.uk
 07860 239600

1st & 2nd Aug: South Gloucestershire Show

Windmill Fisheries Showground
 at The Windmill Fisheries Showground, Westerleigh Road, BS37 8QZ
 For more information: www.southglosshow.co.uk



JOHN H WALKER

**GARDEN
SOLUTIONS**

LANDSCAPING & GARDEN MAINTENANCE
 EST. 1999
 TEL: 01454238865
 MOBILE: 07974933398

Garden makeovers. lawn cutting and Maintenance, Turfing, Patios, Ponds, Water features, Decking, Hedge Cutting Fencing, All shrub work, Clearing, Driveways, & Planting.
 All aspects of garden work undertaken

*TAKING NEW BOOKINGS
 FOR THE LAWN MOWING
 2015 SEASON NOW.
 CONTRACT BASIS OR ONE OFF.*

**To advertise your company or
services in the
Hawkesbury Parish News,**

email us at :

**parishnewsads@
hawkesburyupton.com**

and reach a wide local audience.



"No, golf isn't an extreme sport. But today it will be."



THE 26TH ANNUAL HAWKESBURY OPEN GOLF TOURNAMENT



ON SATURDAY 8TH AUGUST 2015
AT CANNONS COURT GOLF CLUB

Breakfast at 8:30am

Tee off at 10am

(signalled by the Vera Bright Memorial rocket launch.)



Presentation in the evening in the Beaufort Arms garden
with Barbecue and Entertainment

all proceeds to the 1st Hawkesbury Upton Guides



The Hawkesbury Open

The Royal & Ancient
Home of the Swipe, the
Slice & the Hedge Monster



Jazz on the Lawn!

Sunday 12th July 2015

at

Church Farm House Hawkesbury

(opposite the church)

1 -5pm

Music from French Connection

and The Cat's Pyjamas

Pimms, beer and food available

or

Bring your own picnic, chairs and rugs

Tickets (in advance please) from

Linda on 01454 238 553 or Pauline on 01454 238307

£10 (children free)

In aid of the Friends of St Mary's

DOCTOR

www.doctordrive.net



School Of Motoring - Free Theory Tuition
Block Booking Discounts
Gift Vouchers Available

Pass Plus = Cheap Insurance
Recommend a Friend Scheme

Contact Chris 01453 842084
07970 274373

*Wedding
Day
Wagon*



Contact Chris - 01453 842084
chris@weddingdaywagon.co.uk
www.weddingdaywagon.co.uk/



To advertise your company
or services in the
Hawkesbury Parish News,
email us at :

parishnewsads@
hawkesburyupton.com and
reach a wide local audience.

July Services in Badminton Benefice

Sundays	5th July	12th July	19th July	26th July
Readings	5th Sun after Trinity	6th Sun after Trinity	7th Sun after Trinity	8th Sun after Trinity
	2 Samuel 5.1-5,9,10 Mark 6.1-13	2 Samuel 6.1-5,12-19 Mark 6.14-29	2 Samuel 7.1-14 Mark 6.30-34,53-end	2 Samuel 11.1-15 John 6.1-21
Great Badminton St Michael				
Little Badminton St Michael		1115 Matins Richard Thomson		1115 Church's 700th anniversary Matins
Sopworth St Mary	1230 Baptism RT 6pm Evensong RT		1115 Matins Canon C Mulholland	
Didmarton St Lawrence	1115 Matins Richard Thomson	1230 Holy Baptism Richard Thomson	8.30 BCP HC Canon C Mulholland	
Acton Turville St Mary		8.30am BCP HC Richard Thomson	9.45 Matins Chris Andrew	8.30am BCP HC Alveen Thoresen
Boxwell St Mary				
Leighterton St Andrew	8.30am HC BCP Alveen Thoresen	11am CW HC Alveen Thoresen	11.00 Mattins Julian Wilson	6pm SAT EVE Richard Thomson
Hawkesbury St Mary's	9.45 CW Sung Euch Richard Thomson	9.45 Fam Serv Mary Beresford	*6pm Evensong* AT +guest preacher	No evensong at St Mary's — Evening service at Methodist Church
Lasborough St Mary	9.30am Matins Mary Beresford	9.30am BCP HC Alveen Thoresen	9.30am Matins Alveen Thoresen	9.30am CW HC Richard Thomson
Oldbury-on-the-Hill St Arild				
Weekdays Morn		Even	DAYS OF SPECIAL SIGNIFICANCE 2ND JULY VISITATION OF THE BVM 22ND JULY ST MARY MAGDALENE 25TH JULY ST JAMES THE GREAT	
Tuesday	9am Hawk	4.30 Boxwell		
Wed	9am Acton T.	3.30 Lasb		
Thurs	9am Leight	4.45 Sopworth		
Friday	9am Lt Bad	4.45 G Bd		

Request for Volunteers

Volunteers are needed for the play area here at HM Prison Leyhill, on Tuesday, Thursday, Saturday or Sunday afternoons from about 1.30 until 4 (only for one session unless people want to do more) to play with prisoner's children when they visit.

Please contact rev Catherine Todd, Chaplain on 01454 264041

Can you give 1 hour of your time on Show Day or the evening before?

If so, please contact:
Vicky Rispin:
vicky@coombeview.com
07817 913 214 or
Keith Player:
238463 or
0752 868 4267

Every precious hour helps!

St Mary's Church News

Churchwardens Mrs Linda Fairney 238553 & Mrs Mary Davies 238657
Keys for cleaners/flowers/church sitters please contact Mary Davies 238657
if possible the day before to arrange for collection.

"May the mind of Christ my Saviour live in me from day to day, by His love and power controlling all I do and say." Hymn writer Katie Wilkinson (1859-1928)



Several of us went to Gloucester on Saturday 13 June for a farewell service and thanksgiving for the ministry of Bishop Michael Perham in our diocese, and in other areas too. He served in a number of parishes, mostly in the south of England, and held several administrative posts, including as a member of the Liturgical Commission, which developed the new liturgical services of Common Worship. He was enthroned as Bishop of Gloucester in the cathedral on 29 May 2004

Bishop Michael spent a good deal of time visiting all the parishes of the diocese on foot, meeting many people on their home ground, and returning on different occasions, for confirmation services, dedication services like the one for our Wulfstan window, and many others. He offered encouragement, he taught, developed our links with several dioceses overseas, in India, Sweden, Tanganyika and the US. He supported the ministry of women in the Church of England, and it is in large part thanks to him that he is succeeded by the first female diocesan bishop, Bishop Rachel Treweek

There were at least one thousand people in the cathedral for the celebration, so many that it was impossible to find all our friends, and even arriving three quarters of an hour before the service was due to start, we had to sit right at the back. It was a moving and heart-warming occasion, especially following the last difficult months Bishop Michael and his family have had to endure. Afterwards we enjoyed a glass of bubbly and cake in the cloisters

We thank Bishop Michael for his ministry among us

If you are flower arranging or cleaning at St Mary's in July, please check the rota on an earlier page – there are four weddings coming up, so you may not have very much to do!

Don't miss the events arranged by the Friends of St Mary's, also advertised elsewhere. They are always most enjoyable

Jennifer Oldershaw

Friends of St Mary's

There will be a report on the Waterloo Ball in the August issue of the Parish Magazine.

Forthcoming events:-

July 12th – Jazz in the Afternoon 12 noon at Church Farm House (see poster)

July 19th – AGM, choral evensong and drinks party. Our short AGM at 5pm will be followed by evensong at 6pm sung by the joint choirs of St

Mary's Hawkesbury and St Mary's, Berkeley. The service will be led by Rev Alveen Thoresen and the guest preacher will be Rev Canon John Ovenden, formerly chaplain to HM the Queen at Windsor Great Park. Drinks will follow at Church Farm House to which all are welcome.

August 29th – Pimms Tent at Hawkesbury Show

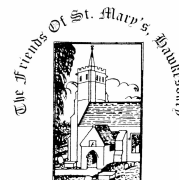
November 21st - Another FOSM

Tasting evening in the Village Hall

Anyone wishing to become a

member of the Friends of St Mary's, please contact the Hon Sec Pauline Setterfield on 238307 or email pleensetterfield@hotmail.com

Pauline Setterfield
www.fosmhawkesbury.co.uk



HARESWOOD JOINERY

Specialising in...

- Bespoke kitchens and interiors
- Freestanding furniture
- Wooden flooring



Philip Barr

Phone: 07467072857 Email: hareswoodjoinery@yahoo.com

25 years experience



bookkeepers

07766 952 697
info@adbookkeepers.co.uk
www.adbookkeepers.co.uk

Always putting off the accounts?

Too busy to sort your receipts?

Ideal for sole-traders or small businesses with high turnover.

Letter from the Vicar — July 2015

Dear Friends,

‘The twain shall become one’

I have some good news for those who think that no one cares about Marriage any longer! This month, we have a wedding on every single Saturday and one on a Friday. How is that for a small country Benefice with only 3000 parishioners! And over the course of the year we have twenty couples getting married in this Benefice.

Of course, not every couple lives here, or has lived here. But they all have a connection to the parish and will continue to have for quite some time, we hope.

Finally, Baptisms (or Chistening as they are commonly called) are flying in. We have had half a dozen and another half a dozen or so booked. So, that is wonderful too.

Another piece of good news: Earlier in the year, I was warning about the lack of money in the church. It seems that parishioners here respond when asked, and we have raised almost £1000 per month, overall. We still have way to go, but I am proud that many of you are heeding the call and wish to preserve the church in these villages.

To really cap it all, church attendance is pretty good and at Oldbury in May, we saw lots of little children in the pews. So thank you to those of you who care about the life of the church, and are willing to put prioritise your care for God and be part of his witnessing community in our part of the globe.

We all need to show God that we care. And worshipping God is a vital part of that.

Best wishes for a happy July,

Richard

Please Contact me for arranging Christenings, weddings or Confirmation.

Email: r.thomson@live.co.uk or Tel. 01454 219236

Benefice website www.badmintonchurch.org.uk/

Church Services in July 2015 For St. Mary's Church

Date	Time	Service	Readers	Readings	Sidesmen
05th July	0945 am	Morning Praise - Holy Communion	M Wareham P Bendry	2 Samuel Ch5 .V 1-5,9,10 Mark Ch 6 V. 1 - 13	L Fairney
12th July	0945 am	Morning Praise	J Oldershaw A Gray	2 Samuel Ch 6 V.1 - 5, 12 - 19 Mark Ch 6 V. 14 - 29	M Bendry
19th July	6 pm	Friends of St Mary's Choral Evensong	I MacFadyen W Fairney	2 Samuel Ch.7 V. 1 - 14 Mark Ch. 6 V. 30 - 34 53 - end	M Davies
26th July	6 pm	No evensong at St Mary's - evening service at Methodist Chapel			
			Alveen Gospel	John Ch. 6 V. 1 -21	
02nd Aug	0945 am	Morning Praise - Holy Communion	P Setterfield D Musty		P Broad
09th Aug	6 pm	Evensong	S Webb		B Salthouse

Church Cleaners:
D Musty

Church Flowers:
Mary Beresford

4th July Wedding
18th July Wedding
25th July Wedding
31st July Wedding

Please note all the different service times

THE METHODIST CHURCH

BACK STREET, HAWKESBURY UPTON



Services for July 2015

Sunday 5th July	10.00am	Morning Praise with Holy Communion at St Mary's
Sunday 12th July	9.45am	Rev Debra Chidakwa Holy Communion
Sunday 19th July	9.45am	Morning Praise at St. Mary's
Sunday 26th July	6.00pm	Rev. Debra Chidakwa's last service at the Methodist Chapel. Followed by refreshments. All welcome.



Please note that this will be Debra's last service with us, so all are welcome to come and bid her a fond farewell.

A blooming great thank-you to all who came along and supported the Marie Curie tea party. Together we raised £120 for the charity. Thank-you to all the bakers and helpers, too.

Possible forthcoming events in the pipeline:

- Informal Songs of Praise service
- Harvest craft morning and/or event

Watch this space

Having a Summer Celebration?

Why not host it at the village hall?

We're well equipped and the ideal place to stage a party or event.

You can check out our facilities and details online at:

<http://www.village-hall.org/>

We have an online booking form:

<http://www.village-hall.org/booking-online.html>

Or email us direct:

bookings@village-hall.org



Well I never...!

Carlsberg created Special Brew in honour of Winston Churchill.

Margaret Thatcher was offered passport number 007, but turned it down.

The letter Z is worth only one point in the Polish version of Scrabble.

Ransom payments to kidnappers are tax-deductable in the USA.

The Statue of Liberty wears size 879 shoes.

500,000 Italians visit an exorcist every year.

Drachenfutter is a present from

a German to his wife to apologise for being out late. It means 'dragon fodder'.

Human teeth can detect a grain of sand 1/2,500 of an inch in diameter.

J.R.R. Tolkien and Adolph Hitler both fought at the Battle of the Somme.

One of the founders of sleep research died in a car crash after falling asleep at the wheel.

Nobody knows who invented the fire hydrant; the patent records were destroyed in a fire.

Source BBC's "QI".

JOHN DAY ENGINEERING



All types of mowers serviced & repaired
Free local collection & delivery

All fabrication & wrought iron work undertaken
Gates, fencing, lighting etc.

Please tel: 01454 238365 or 07947 636308

Ride On Cycles

The Mobile Cycle Workshop That Comes to You

Full range of servicing & repairs carried out by a City & Guilds qualified mechanic, collection & return service also available.

Have your bike service now so it's ready for the good weather & avoid the last minute rush.

Contact Andy on:

01454 880872 / 07443333219

andy@ride-on-cycles.co.uk

www.ride-on-cycles.co.uk



BETHESDA CHAPEL

PARK STREET, HAWKESBURY UPTON

Services for the month of JULY 2015

Sunday July 5th	10.30am	Rev Philip Hopes [C]
Sunday July 12th	10.30am	Mr Munir Din
Sunday July 19th	10.30am	Rev Graham Haddow
Sunday July 26th	10.30am	Rev Philip Hopes



Hawkesbury Upton, Bethesda Chapel

Tuesday July 7th at 7.30pm: **A time of worship/prayer**

Other Tuesdays at 7.30pm: **Bible study/prayer**

Thursdays at 2.00pm: **A time of prayer for revival**

A pastor in Glasgow was informed of a lady in his parish who was in financial difficulties, and behind with her rent. So the pastor took up an offering at the church, a love offering, to help the lady catch up with her rent. The pastor went to her home to give her the money. He knocked and knocked and knocked at the door but there was no answer. Finally he went away. Later he met this lady in the market place. He told her he had been to her house and the reason for his call. "Oh! Was that you? I thought it was the landlord and I was afraid to open the door!"

(Rev 3 v.20) Jesus says, "Here I am! I stand at the door and knock. If ANYONE hears my voice and opens the door, I will come in and eat with him. And they with me"

Why not take the opportunity to open the door of our hearts to Jesus today? "Today is the day of our salvation" (2 Cor. 6 v.2)

M.C. Coates (Chapel Secretary)

Paint the Town in Wotton-Under-Edge

Under the Edge Arts invites artists and photographers of all ages to come and PAINT THE TOWN on Sunday 28th June.

All artists, amateur, professional, children and adults are invited to come and paint Wotton-Under-Edge anytime on Sunday 28th June. This is a fundraising event for UTEA, who are inviting artists to spend the day in Wotton, painting

pictures of the town and surrounding countryside and then donate their efforts to raise much needed funds for the arts centre.

Under The Edge Arts will show all submissions at an exhibition two weeks later (11th & 12th July) when there will be a grand sale with all proceeds going to UTEA. All images should be ready for the exhibition by Wednesday 8th July; they need not be framed, but

should be card mounted and ready for hanging. A4 sized works on paper can be submitted un-mounted for display in the UTEA perspex frame system.

You can work in any medium, and if you'd prefer to take some photos and paint from them later that's fine too. Photographers are welcome to submit work too, but just one A4 print per photographer please.

TRADITIONAL STONEMWORK & POINTING SPECIALIST

- Dry Stone Walling
- Brickwork & Blockwork
- Block Paving
- General Building
- Stone Tiling

STEVE GREEN

01454 238454 (after 5pm)
Mobile: 07813 245550

**Chimney Sweep
Steve Thompson**
07974 194012
01454 232941



Member of the Institute of
Chimney Sweeps.

**To advertise your company
or services in the
Hawkesbury Parish News,
email us at :**

**parishnewsads@
hawkesburyupton.com and
reach a wide local audience.**

Hawkesbury Parish Council

Planning Applications Received:

App. No.	Address	Description	Comments
PK15/1585/PNGR	Barn Opposite Post Box Cottage Orange End Inglestone Common	Prior notification of a change of use from Agricultural Building to single residential dwelling (Class C3) as defined in the Town and Country Planning (Use Classes) Order 1987 (as amended). (Amendment to previously approved scheme PK14/1829/PNC	Seek clarification on the size of the residential curtilage and building The application states: <i>The cumulative floor area of the building which is proposed to change use-175</i> <i>The Cumulative area of land within this curtilage which is proposed to change use-0.06 Ha</i>
PK15/2081/F	Malthouse Cottage High Street Hawkesbury Upton	Demolition of part of existing stone wall and erection of 1.6m high stone wall	Support the application
PK15/1786/LB	Malthouse Cottage High Street Hawkesbury Upton	Demolition of part of existing stone wall and erection of 1.6m high stone wall.	Support the application
PK15/1955/F	Kosy Kot France Lane Hawkesbury Upton	Construction of hardstanding and new vehicular access.	Support the application
PK15/1990/LB	The Old Vicarage Church Lane Hawkesbury	Alterations and improvements to roof insulation and roof space access	Support the application

Planning Decisions received from South Gloucestershire Council :

PK15/0549/F	The Retreat France Lane Hawkesbury Upton	Erection of 1 no. detached dwelling, garage/store with new access and associated works	Approve with conditions
PK15/1024/F	4 Hunters Mead Hawkesbury Upton	Replace existing conservatory roof with a tiled roof.	Approve with conditions
PK15/1158/TCA	Village Hall High Street Hawkesbury Upton	Works to 7no. Lime trees to pollard to previous points and remove epicormic shoots, situated within Hawkesbury Upton Conservation Area	No objection
PK15/0786/PN1	Existing Telecommunications Installation At Starveall Farm Beech Lane Hawkesbury Upton	Prior Notification for intention of replacement of 2 no. antennas, addition of 3 no. 600mm diameter dishes, replace 1 no. equipment cabinet, addition of 1 no. new cabinet and ancillary development.	No Objection
PK14/3282/F	Land Opposite Post Box Cottage Orange End Inglestone Common	Construction of Manege and associated works	Approve with conditions
PK14/2823/F	Barn Opposite Post Box Cottage Orange End Inglestone Common	Change of use of land from agricultural to land for the keeping of horses and erection of stables and associated works	Approve with conditions
PK15/0418/LB	The Stable Yard Stroud Road Hawkesbury Upton	Internal and external alterations to install a metal flue to support the use of a wood burning stove	Approve with conditions

Hawkesbury Parish Council (continued)

Annual General Meeting

Monday 18th May 2015

Seen the appointment of the following Councillors;

Cllr Bryan Robinson-Appointed Chairman

Cllr Sue Hope-Appointed Vice Chair

Cllr Charene Winbow

Cllr Andy Musty

Cllr John Ruthven

Cllr Michael Cox

Cllr Hazel Bleaken

Cllr Sally Bleaken

Cllr Derek Higgs

During the meeting Councillors put themselves forward to be contacts for the following Membership of outside bodies and subcommittees (see below). Please do not hesitate to contact one of the Councillors or the Parish Clerk if you have any issues, concerns that you would like to raise at the next meeting.

ALCA-(Avon Local Council's Association) attend meetings and report back to the Parish Council	Cllr Winbow
Hall Committee -attend the Hall monthly meetings and report back to the Parish Council	Cllr Musty
Cemetery subcommittee 4 members of the Parish Council	Cllr Hope, Cllr Ruthven, Cllr S Bleaken and Cllr Musty
Responsibility of checking	
Monthly finance figures at the meetings	Cllr Higgs
Allotment Contact	Cllr Robinson
Footpaths	Cllr Higgs and Cllr Ruthven
Risk Assessment to be completed and reported to the Parish Council	Cllr Winbow and Cllr Hope
The Parish Council's Standing Orders/Financial Regulations – review these documents with the Clerk	Parish Clerk, Cllr Hope and Cllr Robinson

Parish Council Meeting

If you are new to the parish or have lived here for years here are a few details that you may like to know regarding your local Parish Council Meetings.

They are generally held on the first Monday of every month at one of the following venues - Hawkesbury Parish Hall in the High Street, the Methodist Hall in Back Street or at the Bethesda Chapel in Park Street and they start business at 7.30pm.

The agenda is posted on the Parish Council's Notice Boards in the High Street just by the bus shelter and also at Little Badminton prior to every meeting. This provides details of all the items to be discussed. In addition each Councillor has an opportunity to raise items which they would like to discuss although no resolutions can be made for these until it has been advertised on the next agenda.

Planning applications are forwarded by South Gloucestershire Council for review and comment by the Parish Council; these need a response within 21 days of their initial contact. These are mostly addressed at the main monthly meetings but often, due to timing of receipt the Parish Council will also meet on the third Monday of each month to consider these applications. The Parish Council can also discuss normal business at these interim meetings.

Once the minutes of the meeting have been approved and signed as a true record they are placed on the Village Website for everyone to view. This is normally a month in arrears.

Do you have any issues or concerns that you would like to raise with the Parish Council? Would you like your Parish Council to listen whilst you express your views – then why not attend the next meeting? Public participation is welcomed and a period of 15 minutes is allowed at the start of each meeting for members of the public to speak on any relevant topic. This should give you sufficient time to talk to the Parish Council about those issues that matter to you. You are also most welcome to just come along and listen to hear about the work the Councillors are involved in - you do not have to stay for the whole meeting and you may leave at any time.

The Parish Council would like to welcome you to their meetings to give you an opportunity to meet your Councillors and have your say.

Hawkesbury Parish Council (continued)

Parish Council Meeting

The next Parish Council meeting is being held on Monday 6th July 2015 in the Bethesda Chapel, Park Street, Hawkesbury Upton at 7.30pm.

(Please note the change of venue)

Contact details for Hawkesbury Parish Council via:

Hazel Jones

Parish Clerk

2 Fox Close

Hawkesbury Upton

GL9 1EQ

Tele: 01454 238074 parishcouncil@hawkesburyupton.com

Westward Travel

(John & Laura Simmons)

TEL: 01453 521999

June:

Sun 28th	Weymouth	£17.00	£11.50
----------	----------	--------	--------

July:

Sun 12th	Torquay & Paignton	£17.00	£11.50
Weds 22nd	Jesus Christ Superstar	£45.50	£42.00
Sun 26th	Plymouth	£19.00	£13.00
Weds 29th	Weston-Super-Mare	£11.00	£ 7.50

Book at Hawkesbury Post Office or Westward Travel office in Wotton.

Grants for landlords

South Gloucestershire Council has recently launched *Warm Up South Gloucestershire*, an initiative designed to make your rental property warmer and help landlords stay ahead of new regulations coming into force.

We can help landlords access up to £3,000 of grant funding for energy efficiency improvements such as heating upgrades, with additional funding for new gas connections.

If you want to find out more call
0800 980 0902
or visit www.warmupsouthglos.co.uk

Act fast
– funding runs
out in
September



Quote advert code:
WUBB67



Under the Edge Arts

Under the Edge Arts (UTEA) is a volunteer-run community arts centre offering a wide range of arts classes, events and activities including regular live music performances. Tickets can be booked online, or by contacting us on 07791 323869.

Venue: The Chipping Hall, Wotton-under-Edge, GL12 7AD

The UTEA Summer 2015 programme is in full swing, it is crammed with performances and art, dance, music, craft and drama classes. email: info@utea.org.uk

Late June Events:

Saturday 27th June, 3pm-4.30pm - Vocal Workshop with Mairi Campbell

No experience required. Discover more of what your voice can do and have fun doing it! Mairi Campbell is an experienced and popular choral director based in Edinburgh. Her deep musicality and gentle facilitation style supports your voice whatever it is! Workshop costs £10.

Saturday 27th June, 8pm - Mairi Campbell in Concert

Blending voice and viola, Edinburgh's Mairi Campbell invites you into her sounds world. Songs, stories and soundings blend to create a unique and powerful performance that re-awakens the ancient voice and draws the listener deeply in. Her songwriting partnership with David Francis has also produced some of the finest songs to come out of Scotland in recent years. www.mairicampbell.co.uk. Tickets cost £8/£6.

Sunday 28th June, All Day - Paint the Town

Calling on all artists, amateur, professional, children and adults to come

and paint our town, and raise funds for UTEA. Spend the day in Wotton, painting pictures of the town and surrounding countryside and then donate your efforts to UTEA. We will show all submissions at an exhibition in two weeks time when there will be a grand sale with all proceeds going to Under The Edge Arts. You can work in any medium, and if you'd prefer to take some photos and paint from them later that's OK too. Photographers are welcome to join in too but just one A4 print per photographer please.

July Events:

Friday 3rd July, Grounds open at 6pm, Performance Starts 7.30pm -

Shakespeare at Swinhay: As you Like It
Set in the stunning grounds of Swinhay House, the Bard's pastoral comedy full of love, laughter, and lyricism is performed by the all-male cast of the Festival Players. A colourfully-costumed two hour show, set in the Forest of Arden, and featuring songs set to original music by Johnny Coppin. Perfect entertainment for a summer's evening. Booking essential.

Please bring your own picnic and seating. Grounds open 6pm, play starts at 7.30pm.

Tickets available from It Takes Two, Long Street, Wotton-under-Edge or online at www.utea.org.uk

Venue: Swinhay House, Wotton, GL12 7PQ.

Saturday 11th and Sunday 12th July, 10am-4pm - Exhibition and Sale: Paint the Town

An exhibition of paintings and photographs of Wotton and the surrounding landscape. Two weeks ago we invited artists to paint Wotton and its surrounds and this exhibition is the result, an exciting and varied collection of pictures of the place we all love. All of the images are for sale to the highest bidders, everything must go. If you have a picture to submit please bring it to the art centre either Mon 6 July between 7.30 - 8pm or Wed 8 July between 9.30am and 12 noon. All images to be ready for hanging, either card mounted, framed, or neatly finished if painted on a deep canvas. (A4 photographs and A4 artworks on paper only can be submitted unmounted and will be displayed in our perspex frames.).

I have't got time!

Oh no he won again...

How could I compete with that?

I could never do that!

I wish I'd had a go.

She always wins...

If only I'd thought about it earlier...

What's your excuse?

Feed those veg plants now! Feeling creative? Get out those paint brushes, knitting needles, crochet hooks, soldering irons, paper and glue! Dust off the camera! Experiment with recipes! Brew a beer!

Have a think about what you could enter in Hawkesbury Show.

After 129 years of other people filling that marquee, don't you think it's time YOU had a go?

Go on surprise yourself!

**Plan your entries NOW for the
130th Hawkesbury Horticultural Show — Saturday 29th August 2015**

To volunteer, contact the Show Committee
(contact details on back cover)

TLC WORKSHOPS REDISCOVER YOUR CREATIVE SELF

*Are you looking for an exciting and fun creative day?
Then come along to one of my workshops
and be inspired to create your own personal artwork.*

I will provide opportunities for you to explore and experiment with Textured, Layered and Colourful surfaces using a variety of techniques and media.

You will produce unique 2D or 3D designs depending on the workshop chosen.

No experience or drawing skills necessary.

£35 per workshop –TO INCLUDE ALL MATERIALS -
10am – 4pm.

Refreshments provided but a packed lunch is required.

Dates – Fri 31st July, Sat 1st Aug, Fri 7th Aug,
Sat 8th Aug, Sat 22nd Aug, Sat Sep 5th

I am very flexible with dates so if you and 2 friends would like a workshop on another date then ring or E-mail.

Contact: Patricia Bell - 01454-238887- patricia.c-bell@hotmail.co.uk - for more information

(As places are limited a non-returnable deposit of £15 pounds is required on booking.)

Didmarton Flicks in the Sticks “The Second Best Exotic Marigold Hotel”

Friday 10th July

Didmarton Village Hall

Doors open 6:30 pm for cash bar
and refreshments

Film showing at 7:30pm

Tickets £3 in advance
from jenny.body@btconnect.com

Or £3.50 on the night

There will be no film in August and we
recommence on September 18th...

Discover The Heart of Westonbirt! *Visit Westonbirt House And Gardens 2015*

GARDENS OPEN EVERY WEDS & THURS BETWEEN JULY & OCTOBER
2-5PM Entry: £5 payable at Reception

GARDENS ALSO OPEN 2-5pm As Below

July: Mon 6, Tue 7, Mon 13, Tue 14, Mon 20, Tue 21, Mon 27, Tue 28

August: Mon 3, Tue 4, Mon 10, Tue 11, Mon 17, Tue 18, Mon 24, Tue 25, Mon 31 (entry at ticket hut, honesty box)

September: Tue 1,

October: Mon 26, Tue 27

HOUSE & GARDENS OPEN with tour guides available:
11am – 5pm. Entry: £8, Children under 12 free.

July: Sun 19 (National Garden Scheme NGS)

August: Sun 2, Sun 9, Sun 30

September: Sun 20

October: Sun 25

PRIVATE TOURS

With advance planning we are able to accommodate group bookings for private tours on many other dates. These visits will include a personal tour of the magnificent Victorian mansion, cream tea and a visit to the Italian Gardens, Camellia House, Church and beautiful grounds. For more information or to book a private tour, call Jo Baker on 01666 881373 or email jbaker@holfordtrust.com.

Holfords of Westonbirt Trust: registered charity number 1124066

Charity shop items required for
Mercy in Action who support
ongoing work in The Philippines
such as Orphanages, street
children and house building for
poor families.

**Any donations can be dropped off
at 14 Hunters Mead or tel Pam &
Mike Bendry on 238773.**

Thank you.

Pride & Prejudice at Hookhouse Pottery - 17th July

The Pantaloons return - this time with their version of "Pride & Prejudice". Performance is in the garden so bring something to sit on and suitable clothing. Starts 7.30pm but you are welcome to picnic from 6pm. £12 (£8 u14s) on door; advance £10 (£6). Contact: 01666880297 or hookhouse@hotmail.co.uk <http://www.hookhousepottery.co.uk/>



*The Latin-inspired, easy-to-follow,
calorie-burning, dance fitness-party™.
Feel the music and let loose!!!*

**Monday 6.30 - 7.15 pm—The Club Room,
Gloucester Street, Wotton**

**Tuesday 6.30 - 7.15 pm—Horton & Little Sodbury
Village Hall, Horton**

Thursday 6.30 – 7.15pm—Charfield Memorial Hall, Charfield

For more details contact:-

Andrea on 07970125353 or andrea.benson1@btinternet.com



Ladies!! Do you want to improve your posture,
strength, mobility and stamina?

Then Join a Fitness League Exercise Class!

**Monday 7.30 - 8.45 pm—The Club Room,
Gloucester Street, Wotton**

**Wednesday 6.45 - 8.00 pm—Almondsbury Sport &
Social Centre, Almondsbury**

For more details contact:-

Andrea on 07970125353 or andrea.benson1@btinternet.com



We are a Mobile Valeting Service who come to your home or place of work, we carry our own water and power. The services we offer are from just a simple wash to a full valet, we are happy to undertake cars, vans, caravans. We can also power wash driveways.

MIRROR IMAGE
MOBILE VALETING
Mirror quality you can see
Email: mirrorimagevaleting@yahoo.co.uk

Services Include:
Simple wash and shammy, wash and wax, mini valet, internal only valet, full valet, paint restore of paint oxidation, scratch removal, full paint compound from a single panel to whole car, winter protection.

Prices start from just **£8**



We're based in the Badminton area and cover
Badminton - Hawkesbury - Wotton - Charfield - Yate
Chipping Sodbury - Fallfield - Thornbury and surrounding areas

Contact: 07752 760441 find us on
www.mirrorimagevaleting.co.uk facebook



**Don't get let down
by your oil supplier
on delivery or price**

Call Sodbury Fuels on 01454 315050
or visit www.sodburyfuels.co.uk



Holiday home for rent in Jumilhac le Grand, Dordogne, France

La Maison au Coin is a well-equipped spacious country house with private pool and enclosed garden. Central village location close to all village amenities, historic château, deer park, the river Isle and beautiful countryside. Sleeps 8-10. Ideal for two families sharing or groups of adults.

There is plenty to do and something for everyone: canoeing, walking, fishing, trim trail through the woods, panning for gold, rock climbing, tennis, horse riding, cycling, 'acrobois', wakeboarding! A wide range of activities and amenities are available right on the door step and the local bar, restaurant and boulangerie are only 2 minutes' walk away! For more information, availability and prices please visit the website or our Facebook page: <http://www.ownersdirect.co.uk/accommodation/p8122872>, <https://www.facebook.com/lamaisonaucoin/info>, or 'phone Jane on 07790 888321.



2 Men Went To Mow Garden and Tree Service

Local Friendly and Reliable
Tree Surgery (NPTC Qualified)
All Types of Tree Work undertaken
Contract Grass Cutting
All Aspects of Garden Maintenance
Planting Beds and Borders Maintained
Shrubs and Plants Supplied
Pruning and Hedge Trimming
Garden Rubbish Removal
References Available
Free Estimates
Fully Insured

Tel 07956 311901

07557 365661

Email kev@2menwenttomow.co.uk

Beautifully restored 18th century farmhouse, Hautefort, Dordogne France

Available to let all year round. A very attractive and sympathetically restored former farmhouse. Sleeps 10/12 in 5 Ensuite bedrooms, generous living accommodation & private heated pool. Fully equipped to a high modern standard whilst retaining a wealth of original features. Set in the heart of the quiet hamlet of Lachaud surrounded by glorious open countryside but less than 10 minutes drive from local shops & restaurants. You'll be perfectly placed to explore this beautiful & historic area or just relax, unwind & indulge yourself!

Pets with responsible owners are most welcome!

For more pictures & further details visit:

<http://www.ownersdirect.co.uk/france/FR19942.htm>

Email: bleaksandsal@hotmail.com or Tel: 07510516050 or 01454 238316



...punctuality, pride, courtesy, and quality all come as standard...

- Range and AGA specialist
- Ovens and hobs
- Extractor hoods
- Traditional stoves
- Microwave ovens



the UK's favourite oven cleaning specialists

LET US HELP
call Clive Wallace on
0800 140 9800
07825 709 354

I look forward to hearing from you
www.oven.co.uk
Ovenu (South Cotswolds)

Buskins Shoe Shop Nailsworth

- Ladies shoes
- Mens shoes
- Bags & purses

Tel: 01453 836836
www.buskins.co.uk



The Fleece Inn, Hillesley

*** We have a new manager arriving on 13th July – a warm welcome to Sue-Alice ***

We're open from midday daily, and offer a range of local produce and real ales.
For Bookings Phone: 01453 520003. See our Website for what's on and menus at

www.thefleeceinnhillesley.com

*** 10% Discount on Beers for card-carrying CAMRA Members ***

There's lots going on at The Fleece this summer:

Day	Date	Time	Event
Sun	21-Jun	7:30pm	Vinyl Night – music appreciation on old-school vinyl. Dig out your tunes on the pre-Glastonbury theme of “Live Performance” and join us for a superb evening
Sat	27-Jun	From 5pm	Hog Roast - £5 for roast pork in a locally-sourced roll with homemade apple sauce and stuffing
Sun	28-Jun	7:30pm	Board Games evening (for grown-ups). Come along and play some of those perennial favourites such as Balderdash, Articulate and Cluedo whilst enjoying a glass of beer or wine
Sun	5-Jul	8pm	Quiz. Teams of four, £2 per head, prizes and charity fund raising
Sun	12-Jul	7:30pm	Acoustic Evening. Sing, play or recite – or just enjoy the free live entertainment
Wed	15-Jul	10:30am	Coffee Morning. Come have some delicious Fleece coffee and cakes. Meet and gossip about village life and also support a worthy charity with the raffle
Sun	19-Jul	7:00pm	Vinyl Party Night – these biannual events are incredibly popular. Two record decks, and volunteer DJs each getting control of the mixer for up to ½ hr. Add disco lights and dad-dancing and you get the picture – an old school party with a vinyl soundtrack!
Fri Sun	24-Jul - 26-Jul	From Fri Evening (details on website)	The Fleece 3rd Anniversary Celebrations – come along and join in the party to celebrate three years in community ownership. Beer and cider festival, live music all three days, Morris Dancers Saturday lunchtime, tug-of-war competition and face painting Saturday afternoon – great fun for all the family with loads of photo opportunities (see next entry)
Sat Sun	1-Aug - 2-Aug	All day	Fleece Anniversary Photo Competition – come and share your snaps from the 3 rd Anniversary Celebrations – prizes for the best shots
Sun	9-Aug	8pm	Quiz. Teams of four, £2 per head, prizes and charity fund raising
Sun	16-Aug	7:30pm	Acoustic Evening
Wed	19-Aug	10:30am	Coffee Morning
Sun	23-Aug	7:30pm	Vinyl Night – theme “Religion”

Thursday Evening Meal Specials:

Steak & Chips, mushroom, tomato + pint of beer or glass of House Wine – only £15

HAPPY HOUR: Monday to Friday between 3pm and 7pm ENJOY A PINT OF ALE, FOSTERS or THATCHERS GOLD or a SMALL GLASS OF HOUSE WINE for only **£2.80**

MissDis.co Mobile Disco Hire

www.MissDis.co.uk

Quality service and competitive rates

Raising funds for World Challenge

abbie@missdis.co.uk

01454 326155 | 07531 377077



MANGA PORTRAITS

Japanese anime style caricature portraits drawn by hand from photos

abbie@hawkesburycommon.co.uk

01454 326155 | 07531 377077

Raising funds for Ecuador World Challenge 2015.
Sign up to my easyfundraising.org.uk page and help me raise money simply by shopping online with your favourite online retailers.





Babysitting, Dog Walking and Pet Sitting



Caroline Carnegie	60 Highfields 01454 238918	16yrs old. Available for Baby sitting, Dog Walking and Pet Minding. .
Charlie Carnegie	60 Highfields 01454 238918	14yrs old. Available for dog walking and grass cutting.
Abi Cooper	01454 238836 / 07795 321337	I am an energetic 16 year old with experience in babysitting with a younger sister and many younger cousins, also available to pet sit & walk (whatever the animal may be)! Cake baking is also a hobby of mine so willing to make lots of cakes... Just ask!
Caitlin Houlbrook	01454 238844 07779396639	I am 17 years old in July, a reliable and experienced babysitter, dog walker (I own a dog so can handle them very well) and pet minder. Available most days after school and weekends, or anytime in the school holidays.
Amber Langley	07473357573	I'm 16 years old. I have experience with younger children as I have a 4 year old brother and also younger cousins as well. I've had previous experience with baby sitting. I also have experience with dogs; I have a husky.
Abbie Merritt	01454 326155 07531 377077	I am raising funds for my World Challenge trip to Ecuador in 2015. I am available to babysit most evenings and weekends. I am also able to offer a pet minding service - specialising in exotic pets. I am used to handling reptiles, amphibians, invertebrates, arachnids, and anything woolly, fluffy or hairy.
Katie Munro	01454 238 174	I am a 19 year old experienced babysitter (references can be supplied). I am reliable and trustworthy and love working with young children. I am available anytime - during the day, evenings or weekends.
Ellie Parker	01454 238261	I am reliable and responsible 15 year old who is available for babysitting at weekends or pet care / dog walking after school or weekends. I can also assist with horses including mucking out, turning out, bringing in etc.
Jake Pember	01454 232997	I am fundraising for KLB World Challenge 2015 expedition to Ecuador. I am available for babysitting, dog walking, feeding pets or any other jobs - just ask and I'll see if I can oblige.

STORAGE

Secure dry storage units
in solid Cotswold stone barn

Domestic only

Minimum 2 months

Tel: 01666 840205

Dog Harmony

Dog/Puppy Training, Behavioural Problems
Homevisits, Socialisation,
Dog Walking Service

Contact Je-An: 01454 238145 / 07540336508

email: info@dogharmony.co

www.dogharmony.co

Burlington Design Group

Gillian Osborne

2 Horton Road, Horton, South Glos, BS37 6QH

Tel - 01454 315313 Mob - 07931862069

e-mail - burlingtondesigngroup@talktalk.net

A friendly service offering bespoke curtains,
loose covers, upholstery and every type of blind.

A wide range of fabrics available,
Established over 20 yrs.

HOME COMPUTER PLAYING UP? NEED SOME HELP? DON'T DESPAIR!

For help with:

- Windows 98, Me, XP, Vista and 7 and 8
 - The Internet, Wireless Router Setup
 - Hardware Upgrades and Repairs
 - PCs Custom Built to order
- No problem too small or too large!

Contact: Lloyd Buckingham

Tel: 07940 155064

or 01454 260504

Email: lb_cs@hotmail.com

LB Computer Services



**YOUR LOCAL, LOW COST,
HOME COMPUTER REPAIRER**

Run for the community by the community

Offering you the latest in digital widescreen technology with Xpand 3D.

Queen and Country Running time: 115 mins Cert 15 A

The hilarious highlight of John Boorman's HOPE AND GLORY (1987), nominated for 5 Oscars: 9-year-old Bill Rohan rejoices in the destruction of his school by an errant Luftwaffe bomb. QUEEN AND COUNTRY picks up the story nearly a decade later as Bill (Boorman's alter-ego) begins basic training in the early Fifties, during the Korean War. Bill (played by a charming Callum Turner) is joined by a trouble-making army mate, Percy (Caleb Landry Jones). They never get near Korea, but engage in a constant battle of wits with the Catch-22-worthy, Sgt. Major Bradley -- the brilliant David Thewlis. Richard E. Grant is their superior, the veddy, veddy, infinitely put-upon, aptly-named Major Cross. A wonderfully funny and often moving depiction of a still-recovering postwar England.

Friday, 26th June 19:30 Saturday, 27th June 16:45 Sunday, 28th June 16:45
Monday, 29th June 20:15 Tuesday, 30th June 16:45 Thursday, 2nd July 14:00

Man Up Running time: 88 mins Cert 15

Nancy, is done with dating. 10 times bitten, 100 times shy, she's exhausted by the circus. So when Jack blindly mistakes her for his date, no one is more surprised than her when she does the unthinkable and just --- goes with it. It's going to take a night of pretending to be someone else for Nancy to finally man up and be her painfully honest, awesomely unconventional self... but will Jack also man up, and be able to get over her duplicity? Best just to let the evening unfold, roll with the consequences, and see if one crazy, unpredictable, complicated night can bring these two messy souls together.

Saturday, 27th June 19:30 Tuesday, 30th June 19:30 Thursday, 2nd July 19:30

ENO: Carmen (Live) Running time: 165 mins

English National Opera: Carmen (LIVE) by Bizet

A passionate tale of lust, seduction and betrayal, no other opera boasts as popular a following as Bizet's Carmen. Set during the dying days of Franco's Spain, Calixto Bieito's acclaimed production of this must-see opera has been enjoyed by audiences across Europe. Bizet's dazzling score evokes all the sounds and sizzling atmosphere of Spain through some of the opera's most famous melodies, from Carmen's seductive 'Habanera' to the Toreadors' stirring parade.

Sensational mezzo-soprano Justina Gringyte leads the cast, alongside the internationally acclaimed tenor Eric Cutler as José, ENO Harewood Artist Eleanor Dennis as Micaëla and Leigh Melrose as the toreador Escamillo.

Wednesday, 1st July 19:30

Globe on Screen: Titus Andronicus Running time: 185 mins Cert 1

Returning to Rome from a war against the Goths, the general Titus Andronicus brings with him the queen Tamora and her three sons as prisoners of war. Titus' sacrifice of Tamora's eldest son to appease the ghosts of his dead sons, and his decision to refuse to accept the title of emperor, initiates a terrible cycle of mutilation, rape and murder. And all the while, at the centre of the nightmare, there moves the villainous, self-delighting Aaron. Grotesquely violent and daringly experimental, Titus was the smash hit of Shakespeare's early career, and is written with a ghoulish energy he was never to repeat elsewhere. The 2015 cinema release will have audiences on the edges of their seats from start to grisly end.

Thursday, 9th July 19:30

NT Live: Everyman Running time: 90 mins Cert 15

BAFTA winner and Academy Award® nominee Chiwetel Ejiofor (12 Years a Slave) takes the title role in this dynamic new production of one of English drama's oldest plays, directed by the National Theatre's new Director Rufus Norris (Broken, London Road). Everyman is successful, popular and riding high when Death comes calling. He is forced to abandon the life he has built and embark on a last, frantic search to recruit a friend, anyone, to speak in his defence. But Death is close behind, and time is running out. One of the great primal, spiritual myths, Everyman asks whether it is only in death that we can understand our lives. A cornerstone of English drama since the 15th century, it now explodes onto the stage in a startling production with words by Carol Ann Duffy, Poet Laureate, and movement by Javier De Frutos.

Thursday, 16th July 19:00

Find us on Facebook - Electric Picture House

Follow us on Twitter - @WottonCinema

Information is correct at time of going to press.

Please call for the latest details.

Wotton Electric Picture House
18A Market Street, Wotton-Under-Edge, Glos, GL12 7AE
01453 844601 - general enquiries (during opening hours)
01453 844401 - 24 hour recorded message



S & S GARAGE DOORS

**SUPPLY INSTALLATION AND REPAIR OF ALL
TYPES OF GARAGE DOOR**

INFO@SANDSGARAGEDOORS.COM

WWW.SANDSGARAGEDOORS.COM

01454 279 199

PAINLESS SPINAL TOUCH

POWERFUL • GENTLE • PROFOUND

FROM THIS



**STRESS & STRAIN
EXHAUSTION
MALFUNCTION**

TO THIS



**EASE & FLUIDITY
JOYFULNESS
VITALITY**

Restores the natural equilibrium by re-aligning the body with its centre of gravity. Release from pain and an increased sense of well-being inevitable follow.

ANGELA ECKLES 01454 238 894 / 07947862 622
30 years experience in natural therapies

July Sudoku

Neil Fozard

For the uninitiated:-

to solve the puzzle, each row, column and 3x3 box must contain each of the numbers 1 to 9.

EASY !!

NOT SO EASY !!

				3		1	6	
	5			1		3	8	2
		2		4		7		
5			3		7			8
		6		9		5		
7	3	4		6			9	
	9	1		8				

				4				
		9				4		
	1		9				6	7
		1			8			5
5					3			9
			2	5			3	
	7							8
		2			5			4
		4	6	8		9	5	

Answers to the June quizzes:-

'Easy'

8	6	5	3	2	9	7	1	4
4	3	1	5	7	6	2	9	8
7	9	2	4	1	8	6	3	5
9	1	3	7	8	2	4	5	6
5	7	4	6	9	3	1	8	2
6	2	8	1	5	4	3	7	9
3	8	9	2	4	1	5	6	7
2	5	6	9	3	7	8	4	1
1	4	7	8	6	5	9	2	3

'Not so Easy'

5	4	9	6	1	2	8	3	7
2	3	8	4	5	7	6	1	9
7	6	1	9	8	3	2	4	5
9	1	7	5	2	4	3	8	6
3	8	2	7	6	1	9	5	4
4	5	6	3	9	8	7	2	1
8	9	5	1	3	6	4	7	2
6	2	4	8	7	5	1	9	3
1	7	3	2	4	9	5	6	8



**Looking for
LEGAL
ADVICE ?**

EXPERT LEGAL
ADVICE

**FAMILY LAW
EMPLOYMENT
LAW
CIVIL LITIGATION**

Appointments at a
place local to you—at a
time convenient for
you.

Bevan & Every Solicitors is authorised and Regulated by the
Solicitors Regulation Authority under ID Number 607770

Head Office No.3, Northavon Business Centre, Yate, BS37 5NH
office@bevanevery.co.uk

**BEVAN EVERY
SOLICITORS**

SOLICITORS WITH A
DIFFERENCE

Local Meeting
Offices -
Legal Advice
Clinics In Your Area

www.bevanevery.co.uk

Call Us for a FREE No Obligation chat
0333 3208 600 (Standard Rate calls)

Mikki's Mobile Clipping

07970 868751
mikki.ponter@btinternet.com

Dog Grooming

Horse Clipping



*** 10% discount ***
with this advert

Hawkesbury Contact List

Group	Contact	Phone	Website	Email
1st Hawkesbury Upton Guides	Louise Roberts Jane Bleaken	238628 232993		louise.roberts622@btinternet.com
After School Club	Louisa Tooker or Celia Rowlands	238629 or 232920		hawkesburyasc@hotmail.co.uk
Badminton Club	Roy Townsend	238397		roy.townsend3@btinternet.com
Bethesda Chapel	Mervyn Coates	01453 843771		
Brownies	Liz Howard	238417		lizhowardconsult@aol.com
Chipping Sodbury Police Station	Non-emergency: PC Mike Hart: PCSO Rich Gay: PCSO Sian Rolling :	101 07919628618 0750006433 07825388927	www.avonandsomerset police.uk	michael.hart@avonandsomerset police.uk
County Councillor	Sue Hope	238673		sue.hope@southglos.gov.uk
Cricket Club	Tim Chancellor Anne Evans	01453 845693 294202	www.hawkesburycricket club.co.uk	timchancellor@hotmail.co.uk annieandbernie@btinternet.com
District Councillor	Sue Hope	238673		sue.hope@southglos.gov.uk
Evergreens	Mandy Clarke	01454 261436		
Friends of St Mary's	Pauline Setterfield	238307		pleensetterfield@hotmail.com
Gardening Club	Terry Truebody	238364	www.hawkesbury-gardening- club.org.uk	terry@truebody.co.uk
Hall Booking / Village Calendar Secretary	Lorraine Rutter	07972 508621 01454 299761	www.village-hall.org www.hawkesburyupton.com	bookings@village-hall.org calendar@hawkesburyupton.com
Hawkesbury Horticultural Show	Keith Player (Chairman) Vicky Rispin (Secretary)	238463 or 0752 868 4267 232910	www.hawkesburyshow.org	keithjosieplayer@hotmail.co.uk vicky@coombeview.com
Hawkesbury Primary School	Louise Lewis (Head)	238629	www.hawkesburyschool.uk.org	hawkesburyuptonprimary. school@southglos.gov.uk
Hawkesbury PTA	Hazel Jones	238074	http://www.hawkesbury primaryschoolpta.com	
Hawkesbury Upton Recycling Group	Neil Bennett	07914 908211		peterandpatsherry@tiscali.co.uk
Hawkesbury Volunteer Transport	Trip Coordinators: (<i>arrange transport to medical appts.</i>) General Enquiries:	0797 206 5665 0797 206 5496		 alan_shewry@msn.com
HU5K	Vicki Parker		www.hu5k.org	vicki.parker@ezek.com
Local History Society	Barrie Hope	238673	www.hawkesburylocalhistory society.co.uk	hope.poolfarm@btinternet.com
Methodist Church Schoolroom:	Mrs Moira Coates	238479		
Methodist Church:	Rev Debra Chidakwa	01454 853965		
Neighbourhood Watch	Chris Rispin	232910		chris@coombeview.com
Parish Council	Clerk: Hazel Jones Chair: Bryan Robinson	238074		parishcouncil@hawkesburyupton.com
Parish News	Vicky Rispin (copy/subs) Fiona Rowe (copy) Jill Bendeaux (ads)	232910	www.hawkesburyupton. com/parish_news.html	vicky@coombeview.com parishnews@hawkesburyupton.com parishnewsads@hawkesburyupton.com
Pre-School	Louisa Tooker	07989 484 774	www.hawkesbury preschool.org.uk	enquiries@hawkesburypreschool. org.uk
Toddlers	Sarah Choyce	07980 735152	https://www.facebook.com/ groups/670619976334853/	fihurst@outlook.com
Rainbows	Louise Roberts	238628		louise.roberts622@btinternet.com
RAOB (Buffs)	Iain Rae (Treasurer) Peter Webb (Secretary)	238702 294916		iainrae@uwclub.net susan.peter@uwclub.net
Royal British Legion	Sam Allen	238417		howrdallen@aol.com
Senior Citizen's Fund	Sam Allen	238417		howrdallen@aol.com
St Mary's Church	Linda Fairney	01454 238 553		william@fairney.wanadoo.co.uk
Tennis Club	Howard Bradley Tricia Perris	238761 294768	www.hawkesburytennis.org. uk	howardb@dexam.co.uk
Theatre Group	Jenny Harris	238411		harris@backst.freeseve.co.uk
WI	Gill Truebody	238364	www.hawkesburyand hortonwi.org.uk	gill@truebody.co.uk
Youth Group	Mark Frankcom	238720		markfrankcom@gmail.com

We do our best to keep the contact list up-to-date. Any changes should be sent to parishnews@hawkesburyupton.com.