



---

# *Hawkesbury Parish News*



## EDITORIAL

**Fiona writes:**

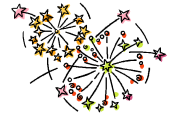
Welcome to the November issue of Hawkesbury Parish News.

We are just back from a well-needed break in deepest West Wales - otherwise known as the autumn "springer spaniel triathlon challenge". Roughly speaking, it involves two humans walking the length of the beach several times a day, whilst an ecstatic spaniel runs, swims and (no, she's not yet able to ride a bicycle) hurtles through the air after a ball. Despite bouts of repetitive strain injury from throwing the ball over and over (and over...), we also managed some great time out, enjoying freshly-landed seafood and locally farmed beef and having a general chill-out. Bliss!

However, back to reality: we returned to rapidly shortening days and the prospect of the clocks going back just before we launch headlong into November. The slow cooker has been formally dusted off, the casserole recipes have been dug out and comfort food is back on the menu.

November sees an abundance of events and activities in the village and, although I hesitate to think too much about it just yet, a number of Christmas shopping opportunities. Just imagine getting all your Christmas shopping done without even having to leave Hawkesbury! Sounds great to me!

Don't miss the fireworks on Saturday 3rd — a real community event and godsend for all those with nervous pets who dread week-long fireworks! Finally, Remembrance Sunday this year falls on Armistice Day—11th Nov. Details of the parade, service at the war memorial and following service at Bethesda are in this issue. Enjoy!



## Deadline for copy for the December issue is 15th November 2012.

**Please send it in as early as you can!**

### Hawkesbury Parish News

Hawkesbury Parish News is edited, produced and distributed entirely by volunteers. Advertising and subscription revenue covers the cost of production only.

**Typesetting,** Fiona Rowe

**Layout, Editorial:** [parishnews@hawkesburyupton.com](mailto:parishnews@hawkesburyupton.com)

**Treasurer &** Vicky Rispin

**Subscriptions:** [parishnewssubs@hawkesburyupton.com](mailto:parishnewssubs@hawkesburyupton.com)

**Editorial Team:** Fiona Rowe  
Vicky Rispin

**Copy to:** Fiona Rowe, 24 Sandpits Lane  
Vicky Rispin, Coombe View,  
High Street (next to the Village Hall)  
[parishnews@hawkesburyupton.com](mailto:parishnews@hawkesburyupton.com)

**Advertising:** Jill Bendeaux  
[parishnewsads@hawkesburyupton.com](mailto:parishnewsads@hawkesburyupton.com)

**Distribution:** Pauline Dixon 01454 299236  
[pcdixon@waitrose.com](mailto:pcdixon@waitrose.com)

Suzanne Flye

**Printed by:** Sprint Print,  
22 Station Road, Yate. 01454 852255

Electronic copy always gratefully received — please save files in Microsoft Word or Rich Text Format (rtf).

Only digital photos sent by email can be accepted.

#### Disclaimer

Any opinions expressed or implied within this publication are not necessarily those of the Editors. The Editors reserve the right to exclude any item whose authorship is not disclosed. No responsibility can or will be accepted for any opinion, comment or error of fact printed in this magazine. All advertising is included in good faith; its inclusion does not necessarily endorse the product or service.

**Latest date for all items for the  
December magazine is 15th November.**

### Useful Local Info

#### Hawkesbury Village Shop

##### Opening Times

Monday - Saturday - 8am-6pm  
Sunday - 8am-12:30pm

High St, Hawkesbury Upton. Tel: 238639



#### Hawkesbury Post Office

##### Opening Times

Mon & Fri: 9am-2pm      Thurs: 9am-1pm  
Tues, Wed & Sat: 9am-12pm

Back Street, Hawkesbury Upton, GL9 1BB  
Tel: 01454 238341



#### Postal Collection (opposite shop)

Mon-Fri: 4:45pm / Sat: 10:30am

**Did you know that we have Websites for the  
Village and also for the Village Hall?**

**[www.hawkesburyupton.com](http://www.hawkesburyupton.com) and  
[www.village-hall.org](http://www.village-hall.org)**

You can use these websites to:

- Check the Hall & Village calendars
- Book the Hall online
- View the Hall & Parish Council minutes
- View past editions of this magazine
- Link to many other village organisations
- and much more.



|          |               |
|----------|---------------|
| Compost  | £1.50 per bag |
| Logs     | £2.50 per bag |
| Firewood | £1.50 per bag |
| Woodchip | £1.00 per bag |

*All available from the  
composting site behind  
the village hall*

For more information on prices and delivery of  
larger amounts, contact:

**Steve Dagger on 07903 037297**

# DATES FOR YOUR DIARY



## Next Parish Council Meeting

The next Parish Council meeting will be on **Mon 5th November 2012, 7.30pm** in the Village Hall.

## Coffee Mornings

Coffee Mornings take place on Mondays from 10am - 11.30am.

At Peggy Woffenden's house

Tea, Coffee and a biscuit or two for 50p. All welcome.



## Evergreens

**Tues 13th November**

**"In my Auntie's Parlour" with Cyril Routley**

2:30pm  
in the Village Hall

If you would like to come along and need a lift please give me a ring.

Mandy 01454 261436

## Yoga classes



with Joan Boulton every Thursday morning at the Methodist School Room 10-11.30am.

£6 a session.

All ages and abilities welcome.

For more details call 01454 238411

Bethesda Chapel  
Park Street  
Hawkesbury Upton

**Tuesday November 13<sup>th</sup>**

10 – 12noon

## Coffee morning

*Christmas cards*

*Books and Gifts*

*Tea, coffee and cake*

## Hawkesbury Primary School

is having a

## Jumble Sale

on

**Saturday 3rd November  
10am—12 noon.**

Please come along for tea and cake.

Any donations welcome.

Please call Claire Cole 238 896.

Can collect.



## Hawkesbury Primary School PTA

## Christmas Shopping Evening

Friday 9th November  
(7.30-9.30pm)  
at the School

Great opportunity to buy reasonably priced, lovely gifts from local suppliers

Bookings for stalls now being taken!

Please contact the PTA to reserve your space



## Mobile Library

*Times & Dates*

**12th & 26th November 2012**

Hawkesbury Village Hall 2.35 - 3.00

Hawkesbury War memorial 3.05 - 3.20

Hawkesbury Highfields 3.25 - 3.40



## SELF-CATERING COTTAGES

ON INGLESTONE COMMON

Having a family do or some building work?

*There are a number of self-catering cottages available, accommodating from 1 – 14 people.*

Ring Hazel on 01454 299227 for details or view on [www.cotswoldedgecottages.com](http://www.cotswoldedgecottages.com)

## KLEEN & GREEN

**Professional cleaners who care**

- ◆ Domestic and Commercial cleaning—daily/weekly/one off
- ◆ All staff police checked, fully trained, fully insured
- ◆ Local, reliable, friendly
- ◆ Ironing service
- ◆ Competitive rates

Tel: Sarah 01454 851487  
Christine 07900 831967

# Hawkesbury CE VC Primary School

November 2012

## Jumble Sale

We will be holding a jumble sale in the school hall on **Saturday 3rd November 10 – 12**, **all are welcome**. This is in aid of playground equipment; we desperately need to replace the matting under the outdoor play equipment which has become worn, slippery and dangerous and we want to buy extra equipment to increase the variety of play equipment the children have. The previous 2 years year 6 leavers have donated money to add to this.

A massive thank you goes to Claire Cole who has been organising this in conjunction with the school council.

## Spotlight on the World Week

The week beginning 22nd October was a curriculum focus week for the whole school. The children learnt about countries in Africa, their cultures and lifestyles. Fiona Mitchell who has visited us before spoke to the children about a school in Uganda which she has helped to develop and worked with the whole school to create some African style artwork.

School dinners had an 'Around the World' theme with some Ugandan style dishes such as Jollof rice and Calalu (meat stew).

## Welcomes

We are pleased to welcome **Yvonne Staples** as our new cleaner. She will be working with Marina Pogose keeping our school fresh and clean.

It has been a pleasure to welcome **Richard Thomson, the new vicar** replacing Christopher Mulholland to our school. He will work in partnership with Alveen Thorensen and has already visited us a number of times, getting to know the staff and children.

## Harvest Service

This was a real success, thank you to St Marys for letting us use the church for our celebration. The children really enjoyed singing their harvest songs, reading prayers and pieces of information about harvest. It was brilliant to see some of our youngest villagers, those who attend Vicky Starling and Emma Barkers child minding business doing their own performance of 'Oats and Beans and Barley Grow'. Parents very generously donated tins for Yate Foodbank and the fresh fruit and vegetables were sold for £80 which will be donated to Children's Hospice South West. A huge thank you goes to Jane Bleaken who made the harvest loaf.

## Be Safe Be Seen / Walk to school week

We will be having a 'Walk to School Week' and Road Safety awareness week beginning 5th November. During this time, children will be given fluorescent jackets and rewarded with house points if they wear them we will also keep tallies of those walking to school.

There will be a special 'Be Safe Be Seen' assembly and some scooter training.

**Louise Lewis — Headteacher**

*Enjoy, achieve, believe.*

### SEVERN VIEW FARM

Sold on Taste



**Boarding Cattery**  
01454 299471

Warm, comfortable, secure holiday accommodation for cats.

Special diets and medicines catered for

### SEVERN VIEW FARM

Sold on Taste

**Organic Farm Shop**  
01454 299236

Good, tasty organic food from our farm on Inglestone Common.

Open Saturdays and Sundays  
- 10am to 4pm.



### PEGASUS HEATING AND PLUMBING

OFTEC Registered C8787  
GAS SAFE GAS INSTALLER No 68606

- ◆ Oil, Gas and Solid Fuel
- ◆ Installations and Repairs
- ◆ Bathrooms and Kitchens
- ◆ Domestic and Commercial
- ◆ Lead work specialist

ALL WORK GUARANTEED

Tel 01454 327708 Mobile 07860 471232



We have had a busy first term, sorting out our garden at school and focussing on our theme of 'All About Me'. All our children seem to have settled in well.

We also had an exciting delivery! We received a letter from Her Majesty the Queen thanking the children for their jubilee pictures. We hope to frame it and put it on display in the hall.

All the children are looking forward to Halloween when we will be dressing up and doing some spooky pictures. We will also be using different paint techniques to create a firework picture in time for Bonfire Night.

Please look out for us selling our Christmas Raffle tickets. This is our biggest fundraiser of the year and we are hugely grateful to the local businesses who support us, including Milburys, the local estate agent, who are sponsoring the raffle.

Do let us know if you would like your child to come to Preschool or if you would like to be added to our waiting list. If you would like to visit Preschool please contact one of our play leaders on 07989 484774.

Alternatively email us at: [enquiries@hawkesburypreschool.org.uk](mailto:enquiries@hawkesburypreschool.org.uk)

For more information on our preschool please take a look at our website:

[www.hawkesburypreschool.org.uk](http://www.hawkesburypreschool.org.uk)

---

## COMING TO HAWKESBURY UPTON THIS MONTH: A NEW SKATE PARK!

**Yes, our wonderful village has done it again!**

Not much more than a year after the Hawksnest Skate Park Appeal was launched, by an energetic committee that included many focused and hard-working young people, plus parents, carers and other supportive adults, we've raised the full amount of money required to build a fantastic new skate park for the children and young people of our village to enjoy for many years to come. (And any adults who want to try it out are welcome to use it too, of course!)

Not only is the funding all in place, but also the necessary approval has been received from by the Parish Council and the Hall Committee, the contractor has been chosen, and the contracts have been signed.

The many organisations and individuals who helped make this happen will be officially thanked at a formal celebration launch party at the end of January, but by the time you read this article, the construction work will already be under way. Weather permitting, it will be completed by mid-November. (Neighbours and those immediately affected by the building work have been contacted by the committee to keep them abreast of progress.)

Children from school and pre-school will be invited on site during w/c 5<sup>th</sup> November to observe the construction work under way. We'll also share the story with the Gazette.

In the meantime, more information can be found at [www.hawkesburyskatepark.com](http://www.hawkesburyskatepark.com) or on Facebook at <https://www.facebook.com/HawkesburySkateParkAppeal>.

Would you like cash for something round the home  
that you no longer want/need/like?

**Well, why not try eBay?**

**No eBay account? That's no problem.**

I have been active on eBay since 2001 and have a 100% positive feedback from over 600 deals. For a percentage I will deal with everything including taking photos of the item, setting up the auction on the eBay website, dealing with any queries from buyers, receiving the sale proceeds and posting off the item for you.

Some items might attract a better price at a local auction house, and dealing with this is another service I can offer

You can set the starting price and if required, set a reserve price.

Any questions, call me on 238778, email me at [mickbendeaux@hotmail.com](mailto:mickbendeaux@hotmail.com)  
or come and see me at 20 Birgagge Road

# INSIDE OUT

**THE COMPLETE DECORATING SERVICE**  
**Efficient, reliable all female team**

A comprehensive interior painting and decorating service, specialising in colour co-ordination, carpets, curtains and accessories.  
From individual rooms to complete houses, concept to completion.

**01453 835497**  
**07766 712066**

**01249 783636**  
**07909 542990**

## NEWS FROM HAWKESBURY PRIMARY SCHOOL PTA

Please support our first big fundraisers of the academic year! We're hoping to raise money to revamp the school playground with new safety matting under the wooden play equipment and also to repaint the lines for hopscotch and many other much-loved games that are fast being eroded by the weather to the point of disappearance.

**Jumble Sale** Saturday 3<sup>rd</sup> November (10am-12noon)

Kindly organised not by the PTA but by the lovely Claire Cole and her team of eager volunteers(!) If you are sufficiently organised to read your parish mag this early in the month, please do come along to the school hall to support what promises to be a fun and lively morning. Later that day we'll be running a Cake Stall at the **Village Fireworks Night**. Many thanks to that tireless committee for once more staging that fab event again.

**Christmas Shopping Evening** Friday 9<sup>th</sup> November (7.30-9.30pm)

This popular event returns, bigger and better than ever, with an amazing **42 stalls** shoe-horned into the school for a cosy evening of efficient and interesting Christmas shopping, all supporting local traders and craftsmen as well as the PTA. This year admission is **FREE OF CHARGE!** And with every stallholder contributing a raffle prize, there are **42 prizes to be won**, so join us for a chance to win a treat for yourself while you shop!

**Christmas Fair** Saturday 15<sup>th</sup> December (11am-1pm)

Our traditional family-oriented event will include plenty of activities and games to keep the children occupied while parents relax over warming refreshments to bolster their strength for the run-up to Christmas. Lots of festive goodies to buy too, from decorations to food and drink. A great way for pre-school children to start to get to know the school too. Everyone welcome, whatever your age, (and that includes you, Santa!)

Finally, a big **thank you** to Andrew Warner who has nobly stepped forward to be PTA Treasurer, relieving Anna O'Brien who has fulfilled this role brilliantly for about a hundred years now (or at least that's how it must feel to her). We've got a lively and inspired committee now in full swing - but **it's never too late to join the PTA!**

Please don't hesitate to come along to a meeting if you'd like to get involved or just to socialise with other parents. Full details of future meetings and the minutes of previous ones are on our new-look website:

[www.hawkesburyprimaryschoolpta.com](http://www.hawkesburyprimaryschoolpta.com)

**Debbie Young, PTA Secretary**

01454 238401 / 07594 717891 / [debbiehawkesbury@googlemail.com](mailto:debbiehawkesbury@googlemail.com)

## Hawkesbury After School Club



**Monday to Thursday  
2.30 to 6pm**

All children from Hawkesbury and neighbouring schools are welcome to come along and enjoy our activities. We aim to provide quality childcare at an affordable price and to offer a place where children can play freely and interact socially in the care of trained playwork staff.

If you book regular sessions in advance the price is £9 for your first child and £6 for each sibling. If you would like to book your child in for a one off session, the cost is £10 per session for the first child with siblings costing £7. These sessions are subject to availability.

All sessions can be booked by either dropping in to a session and having a chat with Louisa, our senior playworker, calling the ASC mobile on 07527 224741 during club hours, or call the school office during school hours.

If you would like to know more about After School Club call me, Kim Anderson on 01454 238799 and I will be happy to help.

### **B.H. COLE & SON LIMITED**

**Tel: 01454 238896 or mobile: 07970 911412**

- ◆ NHBC Registered Housebuilders
- ◆ New Housebuilding
- ◆ Extensions & Conservatories
- ◆ Renovation & Refurbishment
- ◆ Patios, Paths, Walls & Landscaping
- ◆ Natural Cotswold Stone Walling a speciality

### **BUILDER'S RUBBLE, DEBRIS, GARDEN WASTE...**

Any old junk cleared and hauled away  
I can do the job at less than it would cost to hire a skip...  
AND you don't have to load it!

Call **TOM COLE** on 01454 238896  
**MOBILE: 07970 911412**



# REMEMBRANCE SUNDAY

Sunday 11<sup>th</sup> November 2012

All those wishing to Parade down High Street  
please assemble at the Village Hall Car Park from 10.35am  
Departure 10.45am  
All others please gather at the War Memorial

Service at the War Memorial  
To commence at 10.50am  
Two Minutes Silence at 11.00am

The short Remembrance Service on The Plain will be followed by  
a Service in Bethesda Chapel – All Welcome

There is also Evensong with Remembrance  
at 6pm at St Mary's Hawkesbury

*Ms Sam Allen, Honorary Secretary, Royal British Legion*

## 2012 Poppy Appeal

Door-to-door collections for the Poppy Appeal will start from the end of October with collection boxes also at the pubs and shop. Your donations will go to support all serving and ex-serving members of the armed forces and their families. Please ask your collector if you would like more information about the Royal British Legion and the Poppy Appeal.

**Liz Howard, Poppy Appeal Organiser 238417**



## **1st Hawkesbury Guides — WW1 Exhibition**

**Sunday November 11th — 11.30-12.30**

Hawkesbury Village Hall. All welcome. Free Entry.

Refreshments available for a small charge to cover the cost of the hall hire — once hall fees covered, any profit will go to The British Legion.

If any one has any memorabilia from WW1 they would like to put in the exhibition, or has any family stories they would be willing to share, please contact either Louise Roberts 238628 or Jane Bleaken 232993)

### **A.J. MORGAN FARM PRODUCE** France Lane Farm Tel: 01454 238215

Traditionally reared pork & lamb, Free Range Eggs  
Home produced dry cured bacon, ham, gammon, Salami, Chorizo,  
Hawkesbury Faggots, Black Pudding, 1/4lb beefburgers,  
Various flavour sausages, including NEW Spicy Chilli  
All home made in our five star premises.

Only cooking for one? Did you know - you can buy just one sausage, one faggot, one slice of ham, one rasher of bacon & even one egg if you want to!

Last minute BBQ? Unexpected guests to feed?  
Shop Officially Closed? Don't worry just call in, or ring us!  
Karen 07929 947149 or Andrew 07973 137799.

### **MG COUNTRYSIDE DEVELOPMENT**

Fencing, Tree Surgery, XC courses,  
Landscape Gardening, and Fire Wood

|                      |                         |
|----------------------|-------------------------|
| <b>Miles Batten</b>  | <b>07866486808</b>      |
| <b>Giles Bleaken</b> | <b>07976562323</b>      |
| <b>Website:</b>      | <b>www.m-g.org.uk</b>   |
| <b>Email:</b>        | <b>miles@m-g.org.uk</b> |

Based at Upper Chalkley Farm, Horton  
*Other jobs available upon request*



# HAWKESBURY GARDENING CLUB

[www.hawkesbury-gardening-club.org.uk](http://www.hawkesbury-gardening-club.org.uk)

TROWEL & ERROR

Meetings are held at 8pm on the 4th Monday of the month in the Methodist Hall in Back Street.

Our speaker for September was **Peter Jones** who gave a talk on **The Night Garden**.

He believes that a garden should be enjoyed after work and involve as little maintenance as possible.

Also a garden should be fragrant and include lights and crunchy gravel, rustling leaves and bird song (a sensor to set off nightingales recordings and a cushion that when sat on sets off an owl hooting) and small water effects such as pots that trickle or larger runs and rills (but not too much as you'll end up running into the loo all the time).

He suggested various flowering plants that give off perfume – purple petunia, night scented stock, nicotiana etc. And he suggests running naked through the plants to release the scents (and also to enjoy the sensation!) A garden doesn't need to be large but, for the nakedness, it must be enclosed. Some members were more than a little intrigued by this idea!

He recommended dipping bulbs in methylated spirits (good for shallots and onions as well) as its smell keeps away mice, squirrels etc. and, to avoid having to constantly water new plants, dig a large hole and line it with thick layers of newspaper that has been soaked overnight.

Speaker for Monday 26th November 2012 is **G. Hargreaves - Gardens of Gloucestershire**.

Monday 28th January 2013 - **Brian Noble - Mediterranean Vegetables and What To Do With Them**.

Monday 25th February 2013 - **Valerie Hurlston-Gardiner - History of English Gardens through Painting**.

**Terry Truebody (01454 238364)**.



## ODD ISN'T IT?

By Alan C. Porter



Whoever invented sausage, bacon and eggs for breakfast was a genius. Unless you are a vegetarian, suffer from high cholesterol or are fighting the advance of muffin tops around the waist. I fit all the above categories. I suppose I'm a closet vegetarian or would be if I could get in the closet.

It appears that at a certain age you stop growing upwards and compensate by growing outwards, this is a totally inappropriate curved ball that life throws at you but probably caused by the sausage, bacon and eggs instead of a sensible museli munch. But in defence of the fry-up, it's my Sunday morning treat only. The rest of the week is very healthy.

But life is full of the inappropriate such as on a windswept Monday morning being greeted with a cheery, "Good morning." The morning is right but what's "good" about it?

But my favourite is in the doctor's waiting room when two people meet who obviously haven't seen each other for some time and one says to the other. "Haven't seen you for ages. How are you?" He's waiting to see a doctor. How "are" can he be? But when the reply comes, "Ok," you can't help wondering what he's doing waiting to see a doctor for in the first place. Odd isn't it?

But most inappropriate of all is that I've already started my Christmas shopping. Now that is odd!



### BEAUFORT COMMERCIAL SERVICES

Unit 4B, TT Trading Estate,  
Hatters Lane, Chipping Sodbury,  
Bristol, BS37 6AA  
01454 800164    01454 854437

**LGV, HGV and HORSE BOX**  
Maintenance and Repairs  
[hgvrepairs@aol.com](mailto:hgvrepairs@aol.com)

### Beaufort Minibuses & Taxis Ltd

**4 6 8 16 24 seats**

Specialists in Disabled Transport  
Accounts Welcome  
Advanced bookings only -  
call Andy on 01454 313721  
[beauforttaxi@aol.com](mailto:beauforttaxi@aol.com)





# 'QUEEN & COUNTRY'



*Hawkesbury Theatrical Group present their own versions of:*

## 'Blackadder' in Elizabethan England

and

## DAD'S ARMY



In Hawkesbury Upton Village Hall  
ON FRIDAY & SATURDAY 23RD & 24TH NOVEMBER AT 7.30PM

Tickets £7 adults, £5 children

Box Office: 01454 238347

EARLY BOOKING ADVISABLE

*Come and enjoy a great night out!*



## Gloucestershire Wildlife Trust News

### Conservation Taster Days.

Each taster day is 10 am - 3pm Tools and training are provided.  
Wear stout boots and clothes. ( No charge)

**Friday 2nd November.** Coppicing at Lower Woods.

**Tuesday 13th November.** Coppicing at Lower Woods.

**Sunday 9th December.** Coppicing at Midger Woods. ( Hillesley)

### Fungi , Forage and Folklore.

**Saturday 24th November.**

Midger Wood. Hillesley. £8.00 Booking essential.

Please contact Ellen on 07739 297 309 or e-mail [ellen.witer@gloucestershirewildlifetrust.co.uk](mailto:ellen.witer@gloucestershirewildlifetrust.co.uk) for details, directions and booking.

[www.gloucestershirewildlifetrust.co.uk](http://www.gloucestershirewildlifetrust.co.uk)

### Dog Harmony

Dog/Puppy Training, Behavioural Problems  
Homevisits, Socialisation,  
Dog Walking Service

Contact Je-An: 01454 238145 / 07540336508  
email: [info@dogharmony.co](mailto:info@dogharmony.co)

[www.dogharmony.co](http://www.dogharmony.co)



### Steve Green Photography



Wedding packages  
from £250

Family Portrait Sessions  
in your own home  
from £30 inc free print



t: 07580 130 763

w: [www.steve-green-photography](http://www.steve-green-photography) e: [steve@steve-green-photography.co.uk](mailto:steve@steve-green-photography.co.uk)



## Hawkesbury & Horton W I

President Barbara Harvey welcomed everyone to a well attended October meeting but warned that our speakers for the evening, the Fire Brigade, might disappear later as they were on stand-by!

Barbara, who'd attended the Avon Federation AGM at Weston-Super-Mare said her report would be emailed to members later but that everyone who went had a lovely time with Adam Henson from the Cotswold Farm Park as main speaker and much enjoyed.

Thanks went to Sue Hope, Pat Seabrook, Pat Sherry and Caroline Crocker, the team that represented us in the Federation Quiz at Somerset Hall, Portishead. Out of forty-four entries they came fifth, just five points behind the winners.

The operational crew from the Yate Station of Avon Fire and Rescue Service then gave an excellent presentation on life within the Fire Brigade today. There are 23 fire stations across the Avon area with a work force of 1000 and they deal with 30,000 999 calls a year. A large part of their work covers fire prevention. They will give home safety visits if required and will also fit 10 year smoke detectors on each floor of the house, free of charge, if required. Anyone without a smoke alarm was advised to have one and to check regularly that it's working.

A lot of their work involves roadside rescue and we were shown some of the very specialized equipment used in this difficult job. In order to get the safety message across roadskills are taught to young people who've just passed their driving test. They also visit community events in order to inform the general public on safety issues.

Penny Lacy won the Home Safety Tip:-

Have a planned emergency exit route from the home if normal exits are blocked, Especially important from "upstairs" rooms.

Flower of the Month Competition was won by Christine Gamlin with an hydrangea.

Group Rally - Barbara Harvey's hand-knitted scarf was chosen for the competition entry.

### Diary Dates

**6th November** World War II Clothes & Fashion with Juliet Herbert  
Fire Drill

**4th December** Naomi Willmott from "The Harmonies"  
Competition - Christmas Cracker Joke

**12th December** Christmas Meal at Egypt Mill

Visitors are always welcome at our meetings on the first Tuesday of the month, 7.30pm at the Village Hall.

Betty Salthouse 01454 238410



### Plastic milk bottle top collection

Please could people save their clean plastic milk bottle tops?

Yate and Westerleigh Guides are fundraising for their trip to Switzerland(- there is an initiative to recycle them for cash)-please drop them to me.

Many thanks,  
Louise Roberts 238628

### English Rural

Birgage Road, Hawkesbury Upton

Two bedroom house available,

£106.76 per week to a local person

Property has own garden and allocated parking

Please contact Luke Versteeg of English Rural on 020 7820 7937 for further details and to apply



### Hayley Jackson MCFHP MAFHP Foot Health Professional

A small well established business based in Brimsham Park, Yate. A full range of Foot Health Treatments including:

- Nail Cutting
- In growing Toenails
- Verrucae
- Corns and callus
- Heel Fissures (*Cracked Heels*)
- Nail conditions

Tel 01454 314460/07846452000

[www.hjtherapies.co.uk](http://www.hjtherapies.co.uk) / Email: [hayley@hjtherapies.co.uk](mailto:hayley@hjtherapies.co.uk)

Introductory offer - £10 off your first treatment

Offer ends November 30th 2012

To advertise your company or services  
in the Hawkesbury Parish News,  
email us at :

[parishnewsads@hawkesburyupton.com](mailto:parishnewsads@hawkesburyupton.com)

and reach a  
wide local audience.



## “Under wraps: working behind the scenes for the National Trust”



In a change to our advertised programme we are pleased to announce that **Lisa White**, Chairman of the National Trust Arts Advisory Panel, will talk about ways in which the National Trust decides on Acquisition, conservation and interpretation in its historic houses.

**Friday 16<sup>th</sup> November  
8.0pm, Village Hall**

ALL WELCOME

Members £1

Visitors £2

‘Arm loose, please beware’!

### Charity Lunches

We will be holding three charity lunches in aid of the **Hawkesbury Senior Citizen Fund** in the Methodist Hall on the following dates- **Thursday 6th, 13th and 20th December** between 12.30 and 1.15pm.

Everyone is welcome to come and join us and help with this worthy cause.

Anyone wishing to donate soup, rolls or fruit please ring Mary Davies on 238657.

There will be a box for collecting tinned food, toothpaste, etc. for the Julian Trust.

Many thanks

**Mary Davies**



### The Fleece Inn, Hillesley

We are open for business again, under community ownership, as a Free House offering local real ales



Open all day, 7 days a week



Good quality food at sensible prices available lunchtimes and evenings

Jade and the team would love to welcome you to the new look Fleece

[www.thefleeceinnhillesley.com](http://www.thefleeceinnhillesley.com)

01453 520003



### Hawkesbury Village Hall

Mon, Wed, Thurs & Fri 8.45 - 11.45am

**All children are welcome**

**from two years old**

Please contact us on  
07989 484 774

Charity number 1013170

Ofsted Registered 136003

## Hawkesbury Upton Senior Citizen's Fund

The Senior Citizen's Fund is an account that is in place to benefit all those of pension age in the villages of Hawkesbury, Hawkesbury Upton and The Commons. Monies are distributed annually in December. The Royal British Legion administers and distributes the funds, assisted by the WI. The signatories of the account and therefore 'the committee' are Sam Allen, Tim Davies, Charlie Dix and Liz Howard.

But we need your help to ensure that no one is missed. It is difficult to know when people reach pension age (state pension), especially now that the age can differ from year to year. Please let us know when you or someone else reaches that age.

Over the past year fundraising in the community has raised £1,054. This has included monies from: The RAOB (Buffs), 2 Rugby & Football competition proceeds from Mick Bendeaux, Harvest Auction at The Beaufort and 2 Donations.

Thank you to everyone, especially to Mark at the Beaufort for his continued support via the annual Harvest Auction.

In December 2011, 218 senior citizens received £10. This included residents of Beaufort House. (The monies were used to give all residents a Christmas treat.)

The fund is still reasonably healthy, but each year we will continue to need fundraising events and donations to enable us to continue with this great tradition of the community that is Hawkesbury Upton.

**Ms Sam Allen, Hon Sec, The Royal British Legion.**

Tel: 238417 email. [howrdallen@aol.com](mailto:howrdallen@aol.com)



### Small ads

#### Hay for Sale

Good quality hay suitable for horses. Cut and stored dry this summer, 2012, in Hillesley. £3.50 per bale.

Phone: Angela on: 01453 843652 or email: [angelaald1aol.com](mailto:angelaald1aol.com)

#### For Sale:-

Hand operated  
rotating Lawn Aerator

As new £10

Neil Fozard  
01454 238 281

#### Dancewear for sale

Burgundy leotard size large  
with matching belt £10

Black Cuban heel character shoes  
size 3 £5

Black character skirt with  
blue trim waist size 24 £10

Please call 238350



#### DEB'S CELEBRATION CAKES

Individually designed cakes for  
weddings and special occasions

Workshops - have a go yourself  
and learn a new skill

Please contact me to find out more,  
discuss ideas or see my work

DEB PIDSLEY 01453 834394  
07890292125

[www.debscelebrationcakes.com](http://www.debscelebrationcakes.com)

#### FIREWOOD

Dry seasoned hardwood logs,  
delivered cut and split to your  
requirements.

We also sell kindling and coal.

Lower Kilcote Farm  
Call Steve Thompson  
Home: 01454 232941  
Mob: 07974 194012

#### NE odd jobs

A fully insured, professional  
and reliable service

- Garden maintenance
- Cleaning
- Weeding, grass cutting
- Painting

... as well as all those other little jobs  
you just never seem to get around to.

Call: Nicola Evered

07947 072780 or 01453 844124



## Christmas @ The Hawkesbury Shop



We really need your  
Support

We can organize all your food  
For the Christmas period  
From your Turkey  
To the brandy butter  
For your pudding!!

Choose from our range of meats, cheeses, cream,  
Drinks, fruit & vegetables

Make your life easy, sit back and let us do all the hard  
work for you. All you have to do is collect Christmas Eve.

Orders will be taken from the beginning of November.  
Orders over £25 placed during our tasting morning on Saturday 10<sup>th</sup>  
November will be entitled to a free bottle of Italian wine.  
(YOUR WINE WILL BE AVAILABLE TO COLLECT WITH YOUR ORDER)

Don't forget our Christmas Hamper prize draw worth £50.

Starting 20<sup>th</sup> October 2012

Every time you spend £10 or more with us you will be entered into our  
draw.

The draw will take place on Saturday 22<sup>nd</sup> December at 1pm.




**CHIM-CHEROO**  
PROFESSIONAL CHIMNEY SERVICES

- Woodburners, open fires, Agas etc
- Member of the Institute of Chimney Sweeps
- Fully insured
- CCTV inspections
- Blockages removed
- Safety certificates issued
- No mess

Richard Stone  
07805 330 961  
chimcheroosweep@yahoo.co.uk  
24 Gloucester Street, Wotton-under-Edge, Gloucestershire, GL12 7DN

Hire a lucky  
sweep for  
your wedding!

**Chartered Physiotherapist**

Diagnosis & treatment of muscle and joint problems.  
Help following fractures and falls.  
Stroke & MS rehabilitation & physical maintenance.  
Registered with Health Professions Council.



**Sarah Ward MCSP SRP**

**Contact: 01666 840196 Luckington, Wilts.**

# Hawkesbury Bonfire Night



Saturday 3rd November 6:30pm

Firework Display

**COTSWOLD  
SPRING  
BREWING Co.**

Bar \* BBQ \* Mulled Wine \* Sparklers  
Hot Chocolate \* Soup \* Pasties

Best Guy Competition

Donations please at the shop / post office or to.....

Angelo Sauro / Andy Musty / Deb & Jon Boyle

Please leave any unwanted wood for the bonfire at the Rec  
from 26th Oct on the grass near the compost bins.

All children to be accompanied by an adult .



# HAWKESBURY PRIMARY SCHOOL

## Christmas SHOPPING EVENING

*Friday 9th November*

**DOORS OPEN 7.30PM**

**FREE ENTRY**

*at Hawkesbury School*







**SEVERN VIEW FARM**  
— Sold on Taste —

Christmas Shopping Special  
at

Severn View Farm  
Inglestone Common, GL9 1BS  
Saturday 24th November 2012  
10.00am-2.00pm



A gathering of local producers offering quality, handmade gifts. Something for everyone including those who are really difficult to buy for. It will be a truly unique offering in a festive atmosphere with hot drinks and mince pies to smooth the experience. Many new stallholders this year.

**FREE ENTRY**

Confirmed stalls so far....

- Nicola Round – handcrafted silver jewellery, keepsakes, keyrings etc
- The Secret Studio – handpainted home and garden accessories
- Megan Storm – fantastic young artist, cards, paintings, gifts
- Jasper & Co – handmade gifts (some yummy!), jewellery & homeware
- Colerne Stitchers – handstitched cards & embellished fabric gifts
- Drop the Weasel – stocking fillers, decorations, jewellery
- Jaye Designs – washbags, cushions, painted ware
- Tracy Midgely – potted bulbs and plants
- Jenny Humphreys – willow baskets
- Kate Burger – wreathes, swags, table decorations
- Happy Holistics – handmade bath and skincare products
- Flavoursome – scrumptious treats, sweets and savouries
- Mandy Evans – vintage and handmade cards, decorations and more
- Bramley & Gage fruit gins, brandies and liqueurs
- Books by local authors (signed copies) including the Baker Boys and Janey Wilks new country living book
- Stroud CP – cards and gifts with a cat theme.

Extra goodies from the farm especially for Christmas



[www.severnviewfarm.com](http://www.severnviewfarm.com) for more info



|   |   |   |
|---|---|---|
| <p><b>MADE TO MEASURE</b></p> <p><b>CURTAINS &amp; BLINDS</b></p> <p>CHOOSE IN THE COMFORT OF YOUR OWN HOME</p> <p><i>Large Selection of Fabrics</i><br/>Full range of blinds: Verticals, Venetians, Rollers, Velux Blinds<br/>Tracks &amp; Poles – Customer's Own Fabric Make Up<br/>Measuring &amp; Fitting</p> <p>Call Grant on: <b>01453 521751, 07799 822691</b> or Email: <a href="mailto:gb_at_home@yahoo.co.uk">gb_at_home@yahoo.co.uk</a><br/>For a no obligation quote</p> <p><i>A local service with 20 years experience</i></p> |  <p><b>at home</b><br/>CURTAINS &amp; BLINDS</p> <p>Charfield, Wotton-under-Edge</p> | <p><b>JOHN DAY ENGINEERING</b></p>  <p>All types of mowers serviced &amp; repaired<br/>Free local collection &amp; delivery</p> <p>All fabrication &amp; wrought iron work undertaken<br/>Gates, fencing, lighting etc.</p> <p><b>Please tel: 01454 238365 or 07947 636308</b></p> |
|---|---|---|

# Hawkesbury Cricket Club — 300 Club

## Prize winners for July

| WIN | NUMBER | WINNER         |
|-----|--------|----------------|
| £50 | 66     | Betty Bendeaux |
| £50 | 206    | Karen Cole     |
| £20 | 247    | Phil Albery    |
| £10 | 188    | Sandra Rouse   |
| £5  | 55     | Keith Bergham  |
| £5  | 8      | Debbie Davey   |
| £5  | 280    | Howard Bradley |
| £5  | 1      | Jean Shewry    |

## Prize winners for August

| WIN | NUMBER | WINNER         |
|-----|--------|----------------|
| £50 | 61     | Barry Hope     |
| £50 | 55     | Keith Bergham  |
| £20 | 28     | Jill Bendeaux  |
| £10 | 185    | Edna Green     |
| £5  | 138    | Andy Starling  |
| £5  | 81     | Brian Fletcher |
| £5  | 211    | Becki Spokes   |
| £5  | 160    | Fred Eamer     |

## Prize winners for September

| WIN | NUMBER | WINNER               |
|-----|--------|----------------------|
| £50 | 40     | Keith Player         |
| £50 | 289    | Rachel Phillips      |
| £20 | 128    | Carol Bleaken        |
| £10 | 310    | Phil Rutter          |
| £5  | 202    | Gillian Oliver       |
| £5  | 11     | Sally & John Bleaken |
| £5  | 19     | Dick Martin          |
| £5  | 123    | Howard Pettit        |

To join the 300 club, please contact any member of the committee. The cost is just £1 per month. Each month two £50, one £20, one £10 and four £5 winners are drawn.

**Dean Simmonds 01454 238 327**



Hawkesbury Stallions Football Club is back for the 2012.2013 Season. This year, as well as an Adult team, we also have an Under 13's team. The adult team still play on Saturday afternoons and the Under 13's play on Sundays, mostly afternoon kickoffs. All games are played up The Rec.

If you would like to be involved in the club in any capacity, please contact Simon Warren - details on back of parish magazine.

Please see below for home fixtures for both teams.

If you would like a full list of fixtures, please get in touch with Simon.

Thanks,  
HSFC

### Adults Home Fixtures

**2pm KO in November, December,  
January and February  
2.30pm KO all other months**

10<sup>th</sup> November

8<sup>th</sup> December

### Under 13's Home Fixtures

**Most home fixtures are 2pm KO**

28<sup>th</sup> October

18<sup>th</sup> November

9<sup>th</sup> December

Garden Projects undertaken  
Patios & Ponds built  
Interior & Exterior painting  
Tiling & Carpentry



Barry Yuill 01454 238162  
Mobile: 0779 438 5352

### **TV or Satellite Problems?**

Digital Switchover, Tuning,  
Cabling, Freeview, Freesat,  
Multiroom/Sky Eye, Internet TV

Free estimates  
Friendly local service  
07710 794314 or 01454 238418

### **McTimoney Chiropractic Tolsey Surgery, Sherston**

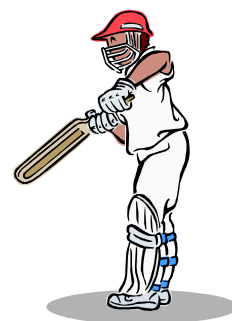
Treating back & neck pain,  
migraines, sports injuries & more  
Emma Newby BSc MMCA

01666 841 402  
www.mctimoneychiro.co.uk

## Junior Cricket Nets

Hawkesbury Cricket Club will be holding Indoor Cricket Nets sessions for juniors, as in previous years. These sessions have proved to be very useful in preparing our young players for the forthcoming season.

**Dates:** January 12th/19th/26th 2013  
February 2nd/9th/23rd 2013  
**Times:** 2-3pm - 8/9/10 year olds  
3-4pm - 11/12 year olds  
**Cost:** £12/child for the 6 week course



Please note that places are strictly limited and therefore need to be booked in advance. Please contact Sara White to confirm your child's place - 01454 238554/ sarawhite@uwclub.net

## Hawkesbury Summer Skittles—2012 League Tables

|                  | <u>Played</u> | <u>Points</u> | <u>Won</u> | <u>Draw</u> | <u>Lost</u> | <u>The Roper Trophyette</u> |    |     |
|------------------|---------------|---------------|------------|-------------|-------------|-----------------------------|----|-----|
| Rats Pack        | 16            | 269           | 13         | 1           | 2           | Rats Pack                   | 16 | 423 |
| Winkers          | 16            | 255           | 12         |             | 4           | Old Foxes                   | 16 | 393 |
| Brats            | 16            | 180           | 8          | 1           | 7           | Hornets                     | 16 | 375 |
| Cream Teas       | 16            | 180           | 9          |             | 7           | Winkers                     | 16 | 365 |
| Old Foxes        | 16            | 173           | 7          | 1           | 8           | Spooners                    | 16 | 356 |
| Hillbillies      | 16            | 156           | 5          | 3           | 8           | Hillbillies                 | 16 | 344 |
| Hornets          | 16            | 174           | 7          | 2           | 7           | Brats                       | 16 | 341 |
| Beaufort Pingers | 16            | 124           | 4          | 1           | 11          | Beaufort Pingers            | 16 | 327 |
| Spooners         | 16            | 73            | 2          | 1           | 13          | Cream Teas                  | 16 | 326 |

### Highest score - Gent

Martin Gardener 52  
Dave Leat

### Highest score - Lady

Pauline Scrivens 47

### Highest spare - Gent

Iain Rae 17

### Highest spare - Lady

Pauline Scrivens 14

### Highest Leg score - The Percy Watts Cup

Rats Pack 69

### Highest Pins total - The Pete Huxford Trophy

Rats Pack 324

## CLASSES IN HAWKESBURY VILLAGE HALL

NIA IS A BLEND OF MARTIAL ARTS, HEALING ARTS & DANCE, PRACTICED TO SOUL STIRRING MUSIC FROM AROUND THE WORLD.

ALL ABILITIES, WOMEN & MEN, EVERYBODY WELCOME WHEN? WEDNESDAYS 5 – 6 p.m. ON A DROP IN BASIS

For more information, please contact Geri Timmins – 01453 844766 or 07775 724888 [gericoombe@gmail.com](mailto:gericoombe@gmail.com) or look me up on [www.nianow.com/gerinia](http://www.nianow.com/gerinia)

## ❖❖❖❖ TILING SERVICE ❖❖❖❖

Professional tiling at competitive prices

Friendly, reliable, courteous service

*For a free quotation, please contact*

*Peter at Artisan Tiling*

**0796 0645893**    [artisantiling123@aol.com](mailto:artisantiling123@aol.com)

**NEW BOOK BY LOCAL WRITER  
PUTS HAWKESBURY ON THE MAP**

On 15 October, local writer Debbie Young, who has lived in Hawkesbury Upton for nearly 22 years, published ***Sell Your Books!*** This book was commissioned by Bristol-based publisher SilverWood Books to do what it says on the cover: to offer promotional advice to the growing band of self-published authors who need to sell their own books.

The term "self-published" means writers who fund the publication of their own books, rather than going through the traditional route of a big publishing house (and requiring that elusive publishing contract!) Although self-published authors have to market their books themselves, they also get to keep the profit, so there is a big incentive to sell lots of books!

Debbie drew on her long career in journalism, PR and marketing to write the book, which involved lengthy research and interviews with authors and other members of the book trade over a two year period. The book is already receiving good reviews, including one from a leading academic in the publishing industry, Dr Alison Baverstock, who liked it so much that she was persuaded to write the foreword!

Aimed at the wide world of publishing and for sale around the globe (one of the first orders came from a Japanese man living in Australia!), the book is clearly the product of Hawkesbury Upton, with honourable mentions for our own Bill Fairney, a self-published author of many books, and the village history books by the Hawkesbury Writers group! If you have any authors or aspiring authors in your family for whom you need to buy a useful Christmas present, signed copies are available on request from Debbie! It is also available to order via Amazon for £8.99 for the paperback (Kindle version to be available shortly for £5.99), or from SilverWood's online bookshop ([www.silverwoodbooks.co.uk](http://www.silverwoodbooks.co.uk)) (Even if you don't want to buy a copy, if you have an Amazon account, she will greatly appreciate you finding the book on Amazon and pressing the "like" button!) 25% of the author's royalties are being given to the JDRF, the leading charity funding research into Type 1 diabetes ([www.jdrf.org.uk](http://www.jdrf.org.uk)).

If you would like to know more about the costs and practicalities of becoming a self-published author, feel free to contact Helen Hart at SilverWood Books on 0117 910 5829 and tell them you're from Hawkesbury Upton. She'll know who sent you and be very happy to talk to you! (And yes, it is the same Helen Hart who wrote the children's pirate story ***The Black Banner***, and who came to visit Hawkesbury Primary School on World Book Day this year, dressed in full pirate outfit! ***The Black Banner*** is also available on Amazon.)

Debbie also creates websites for self-published authors and writes a blog of book promotion tips at [www.otsbp.com](http://www.otsbp.com), as well as writing a personal blog at [www.youngbyname.me](http://www.youngbyname.me). She pens monthly columns in the Hawkesbury parish mag and the Tetbury Advertiser and also works part-time at the national children's charity Readathon ([www.readathon.org](http://www.readathon.org)) which encourages children to read for pleasure. She also helps run a regional support group for families of children with Type 1 diabetes.

No wonder she looks so tired.

## Golden Times

For many children at our village school, the highlight of the week is "Golden Time". The name sounds alluring even before you know what it is...

Golden Time is a brief period every Friday when the pupils are allowed to do what they like - from playing on the computers to drawing pictures to curling up with a good book. It's a treat they look forward to all week as an antidote to their hectic schedule. It's also an effective motivator for good behaviour, as staff may dock minutes from each child for misdemeanours. To allow naughty children to reform, the slate is wiped clean each week, everyone starting with a full score of minutes every Monday morning.

Attending a parents' meeting in the classroom when my daughter was a new Year 1, I spotted on the whiteboard a list headed "Golden Time" with a number of minutes against each child's name. Several other mums were as aghast as I was to see there were no numbers next to our children. What on earth had they done to lose all their time? Hesitantly, I asked the class teacher who smiled and shook her head. "Oh no, Mrs Young, the numbers there represent the minutes those children have been docked!" Phew, my daughter was a good girl after all! My relief was palpable.

One recent Friday, all the girls in her class emerged from Golden Time with their hair in beautiful fishtail plaits, courtesy of their kind teacher. Next week, they were wild-haired from a lovely session of crazy, headbanging dancing.

Either way, they were happy, contented and effectively rewarded for being good all week.

I just wish there was a Golden Time for grown-ups. Or maybe there is, and I've just lost all my minutes for bad behaviour. Hmm, must try harder.

*Debbie's online blog is at  
[www.youngbyname.me](http://www.youngbyname.me)*

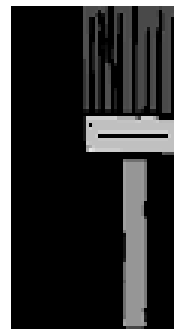
## Mumbleys Farmhouse "Complete Beginners"

Ever Dreamt of Escaping the Rat Race  
and Running your own Smallholding?

We provide a range of one-day courses on smallholding or livestock topics. We start from the basics—no knowledge needed; all questions welcomed!

**Courses:** Bees for Beginners; Sheep for Beginners;  
Smallholder Taster Days; Starting with Hens & Ducks

**Contact: Jules Moore on 01454 415296**  
[www.mumbleysfarmhouse.co.uk](http://www.mumbleysfarmhouse.co.uk)



## BRILLIANT WHITE DECORATING

Professionals too expensive!!!

**THINK AGAIN!**

**I am experienced, fully insured  
and offer great value in decorating.**

For Free Advice & Estimate

Contact Jackie White-

01454 238555 [mob: 07805 266520]

*Following the sad news of the passing of local character, Tony Wilkins, last month, Sally Batten has given us kind permission to publish her eulogy for Tony, as read at Tony's funeral service at St Mary's.*

### **Eulogy for Tony — 1928-2012**

This afternoon we gather in the quiet of St Mary's, Hawkesbury to pay our last tribute of respect to Tony. Tony lived his life to the full and will always be remembered for his colourful personality.

Allow me to share some of the special memories that I have collected of Tony, memories that personify him and his life well lived.

Lesley Anthony Wilkins was born on July 2nd 1928 at "Hiandri", High Street, Hawkesbury Upton. Tony was also known as Wilkie, occasionally Jockey Wilkie after his father! He was one of five children.

Tony attended Hawkesbury School until the age of 14, when he left to take his first job as a Baker Boy for Dan Thompson. His job was to drive the horse and cart down to Hawkesbury and Inglestone Common, delivering bread with Tim Dean. The late Fred Trinder accompanied him initially to show him the way. After they finished their daily round, they would return to Hawkesbury Upton, a stop on the way was important, so to eat the left over lardy cake.

The cart horse they drove was a old grey mare called Bessie – Tony always rested her at the bottom of Cold Change Hill, before the steep climb up. On one memorable occasion, poor Bessie struggled with her journey, sadly to say poor Bessie did not survive the uphill journey and was laid to rest on this day.

Tony had many other transferable skills, he assisted in building work and was known to have build one of the barns at Upper Chalkley, but his most important life long skill was working with horses. This is where he joined his two brothers, Mervyn a jockey and Laddie a stable hand for Claire Balding's father in Andover. Tony pursued his career in the Racing World and became Stable Lad for Colonel Lees at Bicester.

Tony would often share his memories of the Racing World, one in particular:- Colonel Lees owned a horse named "Raparee". Tony was asked to take the gelding to Perth, Scotland, to enter into a race. This involved a train journey, with a change at Crewe. It was a very challenging job, as the horse was young and highly strung – however, Tony and "Raparee" reached their destination, to be greeted by a person in a small van only to collect the feed and rugs. Tony and Raparee had a further 2½ miles to walk. Tony was never a man to step back from a challenge!

The kaleidoscope turns again – Tony, like his father, Stanley, had various connections with local farmers through his riding.

Tony formed a relationship with the Keedwell family at Iron Acton Court and became friendly with Joyce Keedwell. Joyce was a keen rider and demonstrated side saddle riding at the Bath & West Show. Following one of these meetings, mutual friends suggested that Joyce and Tony should increase their friendship and interests – eventually Joyce and Tony formed a relationship and they became sweethearts and were partners for many years. Sadly, Joyce passed away in October 2010.

In Tony's last few working years, he worked at the Sea Transport Co. in Yate (which is no longer standing) – but Tony never lost his love for horses.

Some of Tony's quotes:-

"The horse is a good gift to mankind."

"No hour of life is wasted that is spent in the saddle."

This occupation was an anchor for Tony as it defined and shaped his life for years to come.

Tony was never a man to step back from a challenge and strove to pursue this at all times.

Tony loved following the hunt regularly until last year when illness weakened his adventurous personality. He was known to drive carriages for weddings and other formal occasions upon request; one of which was a setting at Dyrham Park with Anthony Hopkins, when filming "Remains of the Day".

He gained recognition for breaking horses and selling them on, and it was at this point, I met Tony at the Beaufort Point-To-Point, approx 17 years ago – we shared a drink or two! Four months later, my late father Reg Isaac struck a deal with Tony in the sitting room of "The Gables" for a little palamino pony called "Leo" for my daughter, Ellie's 10th birthday.

Tony would be a regular visitor at Game Fairs and farm auctions and inevitably returned with goods i.e. saddlery and the occasional feathered friend.

Wilkie always attended the annual Harvest Home auction at The Beaufort in Hawkesbury Upton, and was the chief auctioneer. Landlord Mark and Tony always completed the evening with a rousing chorus of "The Old Rugged Cross" (Wilkie's favourite hymn). He will always be remembered wearing a bowler hat and a red waistcoat at the evening

of the auction and also it was here Tony enjoyed and evening with son Andrew, daughter-in-law Annette, grandchildren Thomas and Colette.

The kaleidoscope of his life keeps moving:-

Tony and Joyce spent a few Christmas Eves with our family, always laughing, singing and sipping. One of these evenings progressed well into the early hours – little did we know that snow had fallen. Time came for Joyce and Tony to wend their way down the hill to Little Sodbury. We dutifully cleared the snow from the windscreen, only to realise that it was the wrong car!

"Ere Joyce, this 'aint our car! Christ ol Sal!" – we roared.

As we have travelled through some of the memories of Tony's life, the family realised that Tony strove to do the best he could – a life partner, father, grandfather, friend and champion to others.

It is hard to say farewell to Tony, but we will always remember the interesting legacy he leaves behind.

While he sleeps and his voice is still, his spirit goes on.

Tony we will remember you fondly.

**Sally Batten**



## BENEFICE SERVICES FOR NOVEMBER 2012

| Sundays                    | 4th November                            | 11th November Remembrance              | 18th November                         | 25th November                           |
|----------------------------|---|--|---------------------------------------|---|
| <b>Readings</b>            | Heb 9.11-14<br>Mark 12.28-34            | Micah 4.1-5<br>John 15.9-17            | Heb 10.1-4,19-25<br>Mark 13.1-8       | Rev 1.4-8<br>John 18. 33-37             |
| <b>Great Badminton</b>     |   | 10.50 Remembrance<br>Richard Thomson   |                                       | 19th @11.15 El Gubi<br>Richard Thomson  |
| <b>Little Badminton</b>    |   |  |                                       |   |
| <b>Sopworth</b>            | 6.00pm Evensong + HC<br>Richard Thomson |  | 11.15 Matins<br>tba                   |   |
| <b>Didmarton</b>           | 11.15 Matins<br>Richard Thomson         |  | 8.30 Holy Communion<br>tba            |   |
| <b>Acton Turville</b>      |   | 8.30 Holy Communion<br>Richard Thomson | 9.45 Family Service<br>Matthew Butler | 8.30 Holy Communion<br>Richard Thomson  |
| <b>Boxwell</b>             |   |  |                                       |   |
| <b>Leighterton</b>         | 8.30 Holy Communion<br>Richard Thomson  | 11.00 Remembrance<br>tba               | 11.00 All Age<br>Alveen Thoresen      | 11.00 Common Worship<br>Alveen Thoresen |
| <b>Hawkesbury</b>          | 9.45 All Age HC<br>Alveen Thoresen      | 6.00pm Evensong<br>Richard Thomson     | 9.45 All Age<br>Lay Led               | 6.00pm BCP HC<br>Alveen Thoresen        |
| <b>Lasborough</b>          | 9.30 Matins<br>John Avery               | 9.30 BCP HC<br>tba                     | 9.30 Matins<br>Alveen Thoresen        | 9.30 Common Worship<br>Alveen Thoresen  |
| <b>Oldbury-on-the-Hill</b> |   |  |                                       |   |

### Other Services

|          |                |     |             |         |
|----------|----------------|-----|-------------|---------|
| Nov 1st  | All Saints Day | 9am | Lasborough  | BCP HC  |
| Nov 2nd  | All Souls Day  | 7pm | Hawkesbury  | Special |
| Nov 30th | St Andrews     | 9am | Leighterton | BCP HC  |

#### KEY:

|     |                       |            |              |
|-----|-----------------------|------------|--------------|
| RT  | Richard Thomson       | Priest     | 01454 219236 |
| AT  | Alveen Thoresen       | Priest     | 01666 890548 |
| JA  | John Avery            | Lay Reader |              |
| MB  | Matthew Butler        | Layman     |              |
| CW  | Common Worship        |            |              |
| tba | To be arranged        |            |              |
| HC  | Holy Communion        |            |              |
| BCP | Book of Common Prayer |            |              |

#### **JCM Shooting Supplies**

*Shotgun Cartridges Now in Stock.  
Also - Clothing, Shooting Accessories  
&*

**NEW Starter Kits!**

Visit: [www.jcmsupplies.oxatis.com](http://www.jcmsupplies.oxatis.com)

E-mail: [jcmsupplies@yahoo.co.uk](mailto:jcmsupplies@yahoo.co.uk)

Call: 07833 627 810

#### **THE BEAUFORT BUREAU**

#### **OFFICE SERVICES FOR YOU**

Photocopying : faxing : scanning :  
computer training : design :  
programmes : leaflets : tickets  
and much more

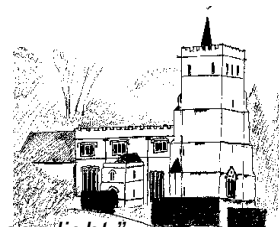
**CONTACT**

**01454 238411/417/174**

To advertise your  
company or services  
in the Hawkesbury  
Parish News, email us at  
[parishnewsads@  
hawkesburyupton.com](mailto:parishnewsads@hawkesburyupton.com)  
and reach a wide  
local audience.

## St Mary's Church News

Churchwardens Mrs Linda Fairney 238553 & Mrs Mary Davies 238657  
Keys for cleaners/flowers/church sitters please contact Mary Davies 238657  
if possible the day before to arrange for collection.



*"Your love, O Lord, reaches to the heavens, your faithfulness to the skies.  
How priceless is your unfailing love! For with you is the fountain of life; in your light we see light."*

*Psalm 36 : 5,7 & 9*

We had a splendid celebration on 20 September at St Mary's at the licensing of the **Revd Richard Thomson**, in the presence of members of all ten parishes of our benefice: Boxwell with Leighterton, Didmarton, Oldbury-on-the-Hill, Sopworth, Badminton with Little Badminton, Acton Turville, Hawkesbury, Westonbirt and Lasborough (the list was recited several times in the course of the service!). The Rt Revd Michael Perham, Bishop of Gloucester, presided over the proceedings, and many people took part at various times, representing different aspects of village and parish life. We enjoyed the singing of the choir, and the lovely flower arrangements, and have received a number of complimentary comments on the evening from the other parishes. We ended the evening with drinks and nibbles, in our usual style. Thank you to everyone who contributed in any way to making such a success of the evening

Looking forward now, in November we have **All Souls**, when we remember our departed family and friends at a quiet, reflective evening service on **Thursday 2 November**. This is not intended only for recent bereavements, but for anyone who wants to remember loved ones. **Remembrance Sunday** this year actually falls on **11 November**, and we shall all be joining in the Act of Remembrance at the war memorial, followed by a short service at Bethesda Chapel. St Mary's service takes place in the evening at 6.0 pm. We are again repeating **lectio divina** throughout Advent, starting on **27 November** at Tithe Barn. This is a wide-ranging, very open exploration of Bible passages, to which there are no right answers – all are welcome to express their thoughts, or not, if they prefer to remain silent. Please let Linda Fairney know if you would like to come

**Advent Charity Lunches** start on **1 December** at the Methodist Hall at 12.30 pm, for three weeks. We shall be very grateful for offers of soup and help on the day. This is a joint venture with Bethesda and the Methodist Church, but we do not talk religion all the time! The aim is to raise money for a charity chosen by the people who enjoy the lunches, and to collect goods for the Julian Trust emergency night shelter for the homeless in Bristol

Even further ahead, we are already planning Christmas services, which are listed below, so that you can make a note of them well in advance. In addition, we have two services for the children: on 6 January next year, which is the feast of Epiphany, there will be a celebration of Messy Church at St Mary's, and on 3 February, Candlemas, we are holding our Christingle service. There should be something at a time to suit everyone!

### Dates for your Diary

**2 November** 7.0 pm All Souls  
**11 November** 6.0 pm Remembrance Evensong  
**27 November** 7.45 pm Lection Divina at Tithe barn  
**2 December** 6.0 pm Advent Carol Service  
**23 December** 6.0 pm FoSM Carol Service  
**24 December** 4.0 pm Light of the World/Crib Service  
**24 December** 11.0 pm Midnight Communion at Leighterton  
**25 December** 10.30 am All Age Communion  
**6 January 2013** 9.45 am Messy Church  
**3 February** 9.45 am Christingle

*Jennifer Oldershaw*

**R&B VEHICLE SERVICES**  
Est. 10 years  
01454 238700  
REPAIRS, SERVICING  
DIAGNOSTICS, BATTERIES  
TYRES, EXHAUSTS  
FOR CAR, 4 X 4 & LIGHT VANS  
FREE LOAN CARS AVAILABLE  
YOU CAN NOW BOOK YOUR MOT  
ONLINE AT  
www.mottetbury.co.uk  
COST EFFECTIVE MAINTENANCE AT A FRACTION OF DEALER PRICES  
CALL RICHARD OR BEN FOR FRIENDLY, RELIABLE SERVICE

- Physiotherapy
- Homeopathy
- Podiatry
- Chiropody
- Chiropractic
- Aromatherapy
- Reflexology
- Acupuncture
- Holistic Massage
- Sports massage
- Nutritional Advice
- Pilates Exercise Classes

### TOLL HOUSE CLINIC

Freephone 0800 0936 362 Telephone 01454 32 22 32  
www.tollhouseclinic.co.uk

47 Horse Street, Chipping Sodbury, BS37 6DA

## Letter from the Rectory

Dear Friends,

Thank you for the welcome you have given my family and me into your lovely parish. It is already proving to be an exciting and fulfilling new chapter in our lives. I have enjoyed visiting the school, the odd playgroup and one or two pubs. At the moment my visiting is restricted to the church officers and the bereaved, though I hope to soon give members of the church a ring and come and hear all about your life and experience.

If you are keen for any reason to have a word, please do ring or email me. I am so fortunate in having a colleague, Alveen Thoresen who is the House for Duty Priest and lives in Leighterton. So, I very much hope together we can respond to the many aspirations and wishes that are part of our life not only in the church but in the community.

November begins with All Saints Day, as we celebrate the saints conquering all the ghouls and demons that we poke fun at on Halloween! One year I want to see children dressed up as saints and angels and have an even BETTER party than on the previous day.

Then All Souls on 2<sup>nd</sup> November, as we remember all who have died. There is a service at Hawkesbury at 7pm to quietly remember our loved ones, which is open to us all whichever parish we live in.

Then Remembrance Sunday on the 11<sup>th</sup>, as we recall the sacrifice made by so many for our country over the last 100 years.

Best wishes and hope to meet you over the coming months, if we have not already.

*Richard Thomson*

Vicar: Rev Richard Thomson 01454 219236

Assistant Priest: Rev Alveen Thoresen 01666 890 548

**Fascinating Rhythm**

Gloucestershire's award winning all female a cappella chorus invite you to their

**Winter Celebration**

**Saturday 8th December 2012**  
**Castle School**  
**Park Road, Thornbury BS35 1HT**  
**Doors & Bar open 7pm**  
**Start 7.30 pm**

supported by  
**BBC Performing Arts Fund**

Tickets £10 adults, £5 children under 12 - available from Chloe Roberts on 07719368701 or email [chloe-tony@hotmail.co.uk](mailto:chloe-tony@hotmail.co.uk)

Box Office: Thornbury Garden Shop, (Tony and Sue's Flowers Ltd), The Courtyard, 8 High Street, Thornbury, Bristol, BS35 2AQ

**Fascinating Rhythm** supported by **BBC Performing Arts Fund**

Come to a one day  
**Harmony Singing Workshop**  
led by Fascinating Rhythm - a top national award winning all female a cappella Chorus based in South Gloucestershire.

Following on from our very successful workshop in January, we are running a really special Christmas Workshop in December. By the end of the session you will have improved your vocal technique, and learned TWO beautiful Christmas songs in glorious 4-part harmony. In addition, you will be invited to perform with Fascinating Rhythm in our Winter Celebration Show the following Saturday. From sheet music to stage in just seven days! Experience the unforgettable — feel what it's like to be part of a Big Show Choir. Whatever your singing ability, be assured of a warm welcome. You'll have an inspiring day with like-minded people and you get to show your family and friends just how amazing you can be when you perform with us.

**Date: Saturday, 1st December 2012**  
**Venue: Turnbarries Community Centre, Bath Road, Thornbury BS35 2BB**  
**Time: 10:00am— 4:00pm**  
**Cost: £12 for the Workshop Day £20 for Workshop day + Show Ticket**  
**Limited places. Closing date for booking: Friday, 16th November 2012**

For further information (including show tickets for family & friends) and to book your place, please contact:  
**Chloe Roberts: Tel: 07719368701**  
**Linda Taylor: Email: [taylin4@hotmail.co.uk](mailto:taylin4@hotmail.co.uk) (preferred)**

**Give yourself a very special early Christmas present this year!**

### EEZEEFLOW

#### DRAIN CLEARANCE

Drainage problems – private and domestic

NO JOB TOO SMALL  
Regional Coverage

**CENTRAL OFFICE**  
**PHONE: 01454 238200**  
**FREEPHONE: 0800 3893037**  
**FAX: 01454 238713**

### Pest Problems

If wasps are a nuisance and bugs are bugging you -

Ring Hazel on  
01454 299227  
To solve your pest problems



### CORNWALL 2012

Directly adjacent to the North Coast footpath, our stunning apartment is again available to rent. With 2 bedrooms/bathrooms it is our special retreat and has all the comforts of home.

Phone Chris on 07931 584810 for details.



# Friends of St Mary's

## Forthcoming events for 2012



### The "Going for Gold" Ball – Saturday 17<sup>th</sup> November

Tables are now almost all sold for the ball, but do ring us if you would like to organise a group of friends to join us – we may yet be able to squeeze you in! Menus will already have been circulated to those hosting tables - four course dinner with coffee, followed by dancing to the amazing band **THE RAIZE**.

This is the FOSM main fundraiser of the year, and like the Olympics we want it to be a golden success! Our beautiful church will need some major structural work done on the tower very soon. We would hate to lose this building or let it fall into disrepair, so do come and support us in our fight to look after our Grade 1 listed church.

**Please call Pauline Setterfield on 238307** if you would like to book a table. Tickets are £37.50 per head

### Coming in January 2013:-

**Wulfstan Wassail** – Saturday 19<sup>th</sup> January in The Malthouse, Church Farm House

(by kind permission of Lisa White).

A rustic supper with mulled cider and carollers to celebrate the Feast of St Wulfstan. Places will be limited. Early booking advised.

For details of membership of the Friends of St Mary's please contact Pauline Setterfield 238307.

## Church Services in November 2012

### For St. Mary's and the Methodist church

| Date     | Time    | Service                         | Readers                | Readings                              | Sidesmen  |
|----------|---------|---------------------------------|------------------------|---------------------------------------|-----------|
| 2nd Nov  | 7 p.m.  | Remembering our loved ones      |                        |                                       |           |
| 4th Nov  | 0945 am | Morning Praise - Communion      |                        |                                       | H. Rogers |
| 11th Nov | 1045 am | Act of Remembrance on the Plain |                        |                                       |           |
|          | 6 pm    | Remembrance Evensong            | W. Fairney<br>G Morgan | Micah Ch. 4 v 1-5<br>John Ch 15 9- 17 | A Craig   |
| 18th Nov | 0945 am | Morning Praise                  |                        |                                       | P Broad   |
| 25th Nov | 10 am   | Methodist Church Sunday School  |                        |                                       |           |
|          | 6 pm    | BCP Communion                   |                        |                                       | M Davies  |
| 2nd Dec  | 0945 am | Advent Carol Service            | T.B.A.                 |                                       | L Fairney |
| 9th Dec  | 6 pm    | Evensong                        | M Bendry<br>J Gardener |                                       | P Bendry  |

If you are unable to attend please telephone Linda Fairney: 01454 238553

Should you wish to speak to Rev Richard Thomson call 01454 219236 or Revd. Alveen call: 01666 890 548

### Church Cleaners:

Mrs Deacon  
Mrs Barnett

### Church Flowers:

Mrs Cole

Please note all the different service times



**SPA**  
**PLUMBING SERVICES**

**Steve Duke**

**23 The Buthay, Wickwar, S.Glos, GL12 8NW**  
**t: 01454 299993 m: 07881 555883**

## TREE TRIMMERS

### PROFESSIONAL TREE SERVICES

*Our qualified and insured arborists undertake all aspects of tree, hedge and shrub work*  
For a free, written quotation and advice please call  
01454 322823

07905 578993 or 07854 258341  
*Covering all of the Hawkesbury Parish area*

# THE METHODIST CHURCH

BACK STREET, HAWKESBURY UPTON



## Services for November 2012

|                      |         |  |
|----------------------|---------|--|
| Sunday November 4th  | 9.45am  | Morning Praise at St Marys   |
| Sunday November 11th | 10.45am | REMEMBRANCE SUNDAY<br><i>Meet on The Plain followed by Service at Bethesda</i> |
| Sunday November 18th | 9.45am  | Morning Praise at St. Mary's   |
| Sunday November 25th | 10.00am | Mr D Jones   |

---

## BETHESDA CHAPEL

PARK STREET, HAWKESBURY UPTON

### Services for the month of November 2012

|                            |         |                                      |
|----------------------------|---------|--------------------------------------|
| Sunday November 4th        | 10.30am | Mr Ray Hollister [C]                 |
| Sunday November 11th       | 10.45am | On The Plain then at Bethesda Chapel |
| Sunday November 18th       | 10.30am | Mr and Mrs Gillard                   |
| Sunday November 25th       | 10.30am | Mr Robert Simpkins                   |
| <i>Sunday December 2nd</i> |         | <i>Mr Alan Tarling [C]</i>           |

**BETHESDA ADVENTURERS MEET DURING EACH MORNING SERVICE**

**Tuesday 6th November – A Time of Worship / Prayer 7.30pm**

**TUESDAY 13TH November ~ COFFEE MORNING ~ 10.00 to 12 noon**

***The Centre Christian Bookshop will be attending***

***Money received for 'Mercy In Action'***

**Thursdays – A time of Prayer for Revival at 2.00pm**



A screaming 19-year-old woman was trapped in her car after falling asleep as she passed over a motorway bridge at 12.15am. Her car was dangerously dangling over the safety rail, only held by the back, left wheel. Every time the rescue teams tried to move the car she would yell and scream – over two hours later the car was secured and the woman was released. Later the Chief Fire Officer said “It was kind of funny, she kept saying “I’ll do it myself” – This was not possible!

Many people go through life believing that they can receive salvation by their ‘good’ works – doing things their own way. NOT SO! Paul wrote to the Ephesians (and us) Ephesians 2 v.8/9 “For it is by grace you are saved, through faith, and this is not of yourselves, IT IS THE GIFT OF GOD, not by works so that no-one can boast”

**M. C. Coates [Chapel Secretary]**



### PUMPKINS NURSERY

**Badminton and Tormarton**

Nursery care and pre-school education  
catering for children aged 1 – 5 years  
Open all year 8am – 6pm

Nursery Education Grant funded sessions available

**Forest School** sessions run at both settings

For more information or to request a prospectus  
contact Amanda Wallis on **01454 219400/218747**  
Or visit our website: [www.pumpkinsnursery.co.uk](http://www.pumpkinsnursery.co.uk)

### DOLPHIN WATER SOFTENERS LIMITED

*Alderton 4, Priory Park, Priory Industrial Estate,  
London Road, Tetbury, Glos. GL8 8HW*

- **Tablet Salt** - £8.25 per 25kg bag
- **Granular Salt** - £8.25 per 25kg bag
- **Block Salt** (Harveys & Kinetico) - £4.70 per 2 x 4kg blocks

Available for collection from 1-5pm Monday to Friday *or*  
delivery service available within a 10 mile radius of Tetbury  
FOR MORE DETAILS – Tel: 01666 500065 Fax: 01666 504911

Email: [ngjkind@btinternet.com](mailto:ngjkind@btinternet.com)



## THE FLEECE INN HILLESLEY

Bookings now being taken for your Festive Meal in December  
Tel: 01453 520003



### *The Fleece Inn* **Christmas Party Menu**

#### **Starters**

Parsnip and apple soup with crusty bread and butter  
Chicken liver parfait served with a spiced fruit chutney and granary toast and butter  
Smoked salmon simply served with lemon black pepper and capers  
Spinach and Tarragon infused Creamy garlic mushrooms on a slice of granary toast

#### **Mains**

Roasted slices of turkey breast served with a chestnut sage and sausage meat stuffing,  
pigs in blankets, roasted Devon grown Marfona potatoes,  
parsnips and vegetables  
Roasted topside of beef served with homemade Yorkshire pudding,  
roasted Devon grown Marfona potatoes, parsnips and vegetables  
Oven roasted cod served on a creamy mash potato and spinach  
topped with a tomato and olive Provencal sauce  
Giant Yorkshire pudding filled with a mixture of roasted and steamed vegetables  
topped with a vegetarian gravy and stuffing

#### **Puddings**

Christmas pudding and brandy sauce  
Baileys and hazelnut cheesecake  
Triple chocolate brownie served with whipped cream  
Mixed berry pavlova  
Or Cheese and biscuits

**£16.95 per person or £17.95 with Coffee and Mince Pie**



**JOHN H WALKER**  
**GARDEN SOLUTIONS**

LANDSCAPING & GARDEN MAINTENANCE  
EST. 1999  
TEL: 01454238865  
MOBILE: 07974933398

Garden makeovers, lawn cutting and  
Maintenance, Turfing, Patios, Ponds,  
Water features, Decking, Hedge Cutting  
Fencing, All shrub work, Clearing,  
Driveways, & Planting.  
All aspects of garden work undertaken

**TAKING NEW BOOKINGS  
FOR THE LAWN MOWING  
2012 SEASON NOW.  
CONTRACT BASIS OR ONE OFF.**



school of motoring

**FREE Theory Preparation**

**Block Booking Discounts**

Competitive Rates

High Pass Rate

Start Learning at 16

Pass Plus = Cheap Insurance



For More Info Contact Chris

**01454 238693**

**07970 274373**

[www.doctordrive.net](http://www.doctordrive.net)

## South Gloucestershire Councillor's Report

### Small Revenue Grants open for business

Are you a voluntary group working in South Gloucestershire? Do you serve your local community to make their lives better? And would a small grant from South Gloucestershire Council help you do it?

All the grants are designed for volunteer groups that want to develop projects and provide activities that meet local needs. They can include art and culture, children and play, community safety, developing communities, enhancing the natural and built environment, learning activities, promoting equality and tackling poverty, sports, and supporting vulnerable people.

The **Small Revenue Grants** fund can give you up to £3,000 or more and applying for one is easily done online through the Council's website.

If you would like to apply for funding, applications can be made from **Monday 22 October 2012**. You have 5 weeks to apply (closing date is 26 November 2012), and we can help you every step of the way.

Go to [www.southglos.gov.uk](http://www.southglos.gov.uk) for more information. Or phone our Grants Helpline on 01454-865865 for an informal chat.

Although the Inspector has given South Gloucestershire Council's Core strategy the green light; there are some modifications and further consultation is currently open on the Planning Framework for South Gloucestershire— details can be found at the local libraries or on the Council's website.

At a recent meeting, Neighbourhood Planning was explained in further detail to parish councillors in the Cotswold Edge area. This is how local communities can decide on what they would like to see in their area, and could help achieve some of the actions in the Parish Plan. Another way, is through setting up a Community Land Trust. In all cases the parish council must take the lead.

Localism is also manifesting itself in different service areas – we can expect parish councils to be asked to take on some non-mandatory services, and different ways are being explored in which caring and support services may be delivered.

### Calling all over 50s.

Age UK South Gloucestershire is conducting a survey on the needs of older people (sorry folks that includes the over 50's) to help shape future services. I have put some copies in the post office and the survey can be downloaded from [www.ageuksouthglos.org.uk](http://www.ageuksouthglos.org.uk) home page ( first item, 'Tell us what you think'). It is a FREEPOST return address for the paper copies.

Please ensure the rural voice is heard in the survey.

### Election on 15th November.

On Thursday 15 November, polls will open in the Avon and Somerset policing area –which includes South Gloucestershire – for the chance to vote for a Police and Crime Commissioner.

This is a new role that will replace the local Police Authority. The Commissioner will produce a police and crime plan setting out local policing priorities for our area, set the annual policing budget and will appoint and oversee the Chief Constable.



...punctuality, pride, courtesy, and quality all come as standard...

- Range and AGA specialist
- Ovens and hobs
- Extractor hoods
- Traditional stoves
- Microwave ovens



the UK's favourite oven cleaning specialists

LET US HELP  
call Clive Wallace on  
0800 140 9800  
07825 709 354  
I look forward to hearing from you  
[www.ovenu.co.uk](http://www.ovenu.co.uk)  
Ovenu (South Cotswolds)

To advertise your company  
or services in the  
Hawkesbury Parish News,  
email us at  
[parishnewsads@  
hawkesburyupton.com](mailto:parishnewsads@hawkesburyupton.com)  
and reach a wide  
local audience.

## South Gloucestershire Councillor's Report (continued)

The elections use a different system of voting called the supplementary voting system. You will have two votes, one for your first choice candidate and one for your second choice.

Who can vote in the elections? Any eligible South Gloucestershire resident over the age of 18 who is registered to vote. Poll cards will be issued to all eligible electors. Please contact electoral services on 01454 863030 if you need any help with registration or visit our website [www.southglos.gov.uk/pcc](http://www.southglos.gov.uk/pcc)

Between October 22 and November 2 the Electoral Commission will send every household in England and Wales a booklet about the elections and the supplementary voting system. If you do not receive your copy by the 2nd November please telephone the Electoral Commission on 0800 328 0280.

**Streetcare** – flytipping, potholes and streetlighting can be reported on the South Gloucestershire Council revamped website. [www.southglos.gov.uk](http://www.southglos.gov.uk) or 01454 868000 Let me know how easy you find it!

### Broadband update

It is anticipated that the contract to provide improved broadband services will be awarded at the end of October, followed by six months of further survey works.

### Our bus service

Many thanks to all those who have contacted me regarding the disruptions to the 86 service. This is important, as Wessex Bus Company is fined for any no shows of the bus service. We have a valuable and well used service and want to ensure it continues to run. Council officers meet frequently with Wessex to discuss the problems, and pass on our local difficulties.

### Congratulations to the Skate/BMX' s

Funding has been secured, and work will shortly start on this much needed facility for Hawkesbury's young people. Many people, including the young people themselves, have worked hard to secure the wheelie facility, and I am confident they will look after this new play area; well done to them for speaking up at the recent Frome Vale Area Forum, where they received generous applause for their presentation.

Cllr Sue Hope

[sue.hope@southglos.gov.uk](mailto:sue.hope@southglos.gov.uk)

01454 238673

07860 239600

## WESTONBIRT ARBORETUM CHOSEN FOR FLAGSHIP FUNDING SCHEME

A project to build a new Welcome Building and restore the Grade I Registered landscape at the Forestry Commission's National Arboretum at Westonbirt has been awarded a grant of £500,000.

The Westonbirt Project was named as Cultural Facilities Flagship Project for the Biffa Award 2012 scheme.

The grant will help fund educational areas of a new Welcome Building planned for 2013. The areas will share the history of the arboretum, showcase work taking place to research trees for the future and help direct visitors to must-see areas or events.

Over £2.8 million has now been raised towards the £3.6 million project. Fundraising is being led by the Friends of Westonbirt Arboretum; a registered charity which supports the Forestry Commission at The National Arboretum.

The Forestry Commission's Director at Westonbirt Arboretum, Simon Toomer, commented:

"With this generous grant we are now one step closer to realising our dreams through the Westonbirt Project.

"When people currently arrive at Westonbirt they are greeted at a tiny admissions booth, with no real sense of direction or importance of the arboretum they are about to enter.

"The developments planned as part of the project will enable visitors to park, pay on foot through the new Welcome Building and find out all about the trees, history and what they can see before they venture off into the arboretum."

Construction of the new Welcome Building is planned for late 2013. The arboretum's team aim to begin work on the new car park in January 2013.

The new car park is part of the Grade I Registered landscape restoration. Parking will be moved to an area not protected by English Heritage and the current car park will be returned to a landscape of rare grasses and wildflowers.

More information on the Westonbirt Project can be found at [www.westonbirtproject.co.uk](http://www.westonbirtproject.co.uk).



*The Latin-inspired, easy-to-follow, calorie-burning, dance fitness-party™. Feel the music and let loose!!!*

Monday 6.30 - 7.15 pm—*The Club Room,*

*Gloucester Street, Wotton*

Tuesday 6.30 - 7.15 pm—*Horton & Little Sodbury*

*Village Hall, Horton*

Thursday 6.30 - 7.15pm—*Charfield Memorial Hall, Charfield*

For more details contact:-

Andrea on 07970125353 or [andrea.benson1@btinternet.com](mailto:andrea.benson1@btinternet.com)



**Ladies!!** *Do you want to improve your posture, strength, mobility and stamina?*

**Then Join a Fitness League Exercise Class!**

Monday 7.30 - 8.45 pm—*The Club Room,*

*Gloucester Street, Wotton*

Wednesday 6.45 - 8.00 pm—*Almondsbury Sport &*

*Social Centre, Almondsbury*

For more details contact:-

Andrea on 07970125353 or [andrea.benson1@btinternet.com](mailto:andrea.benson1@btinternet.com)

## Hawkesbury Parish Council

Planning applications received:

| App. No.                  | Address   | Description   | Comments  |
|---------------------------|---|---|---|
| <b>PK12/2927<br/>/TCA</b> | Beaconsfield House<br>Park Street<br>Hawkesbury Upton | Works to fell 1 no. Ash tree situated within the Hawkesbury Upton Conservation Area   | The Parish Council <b>Supports</b> this planning application. |
| <b>PK12/3157/TCA</b>      | Pool House<br>High Street<br>Hawkesbury Upton         | Works to reduce 1 no. Ash tree to previous cuts and remove 1 no. Ash Tree situated within the Hawkesbury Conservation order | <b>No objection</b>   |

Planning decisions received:

|                           |  |   |                                     |
|---------------------------|--|---|-------------------------------------|
| <b>PK12/2134<br/>/RVC</b> | Blue Boy Barn<br>High Street<br>Hawkesbury Upton | Variation of condition 6 attached to planning permission PK09/5147/F to alter the materials used for the boundary treatment in accordance with drawing no. ER03/PL01. | <b>PERMIT</b> subject to conditions |
| <b>PK12/2251/RM</b>       | 42 Highfields<br>Hawkesbury Upton                | Demolition of existing dwelling to facilitate erection of 4 no. dwellings (Approval of reserved matters to be read in conjunction with PK09/5893/0                    | <b>PERMIT</b> subject to conditions |

### *Hawkesbury Christmas Lights*

*Switch on 8<sup>th</sup> December 2012*

*At 5.30pm*



### *Help Required*

*Donation of mince pies*

For Saturday 8<sup>th</sup> December 2012

Delivered to the Parish Clerk

@ 2 Fox Close, Hawkesbury Upton before 5pm on Saturday 8<sup>th</sup> December

**please can you let the Parish Council know how many mince pies you can donate by the 1<sup>st</sup> December**

Mulled Wine and Mince pies by The Fox and The Beaufort

# Hawkesbury Parish Council (continued)

## Parish Council Meeting

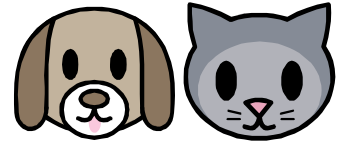
The next Parish Council meeting will be held on **Monday 5th November 2012** in the upstairs meeting room in the Village Hall at 7.30pm.

### Contact details for Hawkesbury Parish Council via:

Hazel Jones  
Parish Clerk  
2 Fox Close, Hawkesbury Upton GL9 1EQ  
[parishcouncil@hawkesburyupton.com](mailto:parishcouncil@hawkesburyupton.com)



## Babysitting, Dog Walking and Pet Sitting




|                    |                               |   |
|--------------------|-------------------------------|---|
| Ciaran Ainsworth   | 01454 238052                  | Raising money to take part in World Challenge, so anything considered: pet sitting, baby sitting, lawn mowing, car washing.   |
| Cerys Bradley      | 01454 238761                  | 19yr old, experienced babysitter available all day and/or evening for child minding or mathematics tutoring ( up to and including GCSE level ).   |
| Caroline Carnegie  | 60 Highfields<br>01454 238918 | 14yrs old. Available for dog walking and babysitting.   |
| Charlotte Carnegie | 60 Highfields<br>01454 238918 | 20yrs old. Available for baby sitting, dog walking and pet minding.   |
| Katie Munro        | 01454 238 174                 | I am a 16 year old experienced babysitter (references can be supplied). I am reliable and trustworthy and love working with young children. I am available most evenings and weekends term times and at all times during the school holidays. |
| Libby Musty        | 01454 238118                  | I am 15 years old. I am an experienced babysitter and pet-sitter and am available during weekends (in term time) and most days during the holidays.   |

### HOME COMPUTER PLAYING UP? NEED SOME HELP? DON'T DESPAIR!

For help with:

- Windows 98, Me, 2000, XP, Vista and 7
  - The Internet, Wireless Router Setup
  - Hardware Upgrades and Repairs
  - PCs custom built to order
- No problem too small or too large!

Contact: Lloyd Buckingham  
Tel: 07940 155064  
or 01454 260504  
Email: lb\_cs@hotmail.com

**LB Computer Services**   
**YOUR LOCAL, LOW COST,  
HOME COMPUTER REPAIRER**



### Down to Earth Tree Care Ltd



Full tree surgery (including rope and harness work)  
garden maintenance services

Call Graham Chamberlain for free advice or quotation.  
Tel: 0778 606 4803 or 01454 294520  
*NPTC qualified and insured practitioners*



### LYNN'S DRIVING SCHOOL

GRADE 5 female driving instructor.

Weekly lessons or intensive courses.

I have a Nissan Micra which is easy to drive.

Pass plus registered.

Excellent 1<sup>st</sup> time pass rate.

For further details please contact...

**01454 219101 or 07919410064**  
**or [lynnie1000@hotmail.com](mailto:lynnie1000@hotmail.com)**



### Empathy Clinic

To book a session or for further information  
contact Vicky Peirce:

[v.pierce@googlemail.com](mailto:v.pierce@googlemail.com)

[www.cometolife.org](http://www.cometolife.org)

Tel: 01454 238712

*Fully confidential sessions.*



## THE FLEECE INN HILLESLEY

### Forthcoming Events

#### **COMMUNITY COFFEE MORNING**

**11.00am Wednesday 14<sup>th</sup>  
November**

Only £3 for tea or coffee and homemade  
cake

Join your friends and neighbours for a  
cosy Autumn cuppa!

#### **VINYL NIGHT (Music Appreciation)**

Sunday 25<sup>th</sup> November

Bring your treasured vinyl albums and  
enjoy the music and company

#### **QUIZ NIGHT**

Sunday 4<sup>th</sup> and 18<sup>th</sup> November

8.00pm start

Entry is £2 per person,  
teams of up to four people

Come and share your talents with  
friends at our

#### **ACOUSTIC NIGHT**

**Sunday 11<sup>th</sup> November, 7.30 to 9.30**

Whether you want to sing, recite or play –  
or just listen, then do come along It's a  
GREAT evening!

Try our **EARLY EVENING MEAL DEAL**

**Mondays and Tuesdays between  
6.00pm and 8.00pm**

Only £7.95 for two courses (Main from  
the specials board plus dessert)

### What's on at Westonbirt

#### **Autumnal highlights** (Family event)

**Monday 29 October - Friday 2 November** 10:30am - 4pm

Be inspired by seasonal fireworks and autumn's bounty! Meet the traffic light tree, find dead men's fingers and take a trail around the Old Arboretum. There will be different leaf craft activities each day. Free after admission.

#### **Westonbirt wood sales**

**Saturday 10 November 10am-3pm**

**Sunday 11 November 10am-1pm**

Proceeds go to the Friends of Westonbirt Arboretum, so cash or cheques only please. Follow signs from the car park on arrival. Call 01666 880220 or [woodsales@fowa.org.uk](mailto:woodsales@fowa.org.uk)

#### **Enchanted Christmas**

**Friday 30 November - Sunday 23 December**

Follow an illuminated trail around the Old Arboretum and take part in festive activities. See the Enchanted Christmas web pages for more details.



**COUNTRY  
PROPERTY**

**theauctioneer.biz**  
PROPERTY AUCTIONEERS

Nick Cragg FRICS FNAEA

**01454 321339**

Specialist Property  
Sales Lettings Consultancy  
South Gloucestershire

[www.countryproperty.co.uk](http://www.countryproperty.co.uk)

**ANTHONY HARCOURT**

**OSTEOPATH & ACUPUNCTURIST**

No 3 Horse Street,  
Chipping Sodbury  
BS37 6DA

**Tel: 01454 326256**





# Handel *Messiah* on Oratorios

**Saturday 24th November 2012**

**Stroud Choral Society  
Regency Sinfonia**

Conductor: *Huw Williams*  
Soprano: *Sarah Winsbury* Soprano: *Patrick Craigellio*  
Tenor: *Jon English* Tenor: *Samuel Young* Bass

Subscription Rooms, Stroud GL5 1AL  
7pm Tickets £15, under 18s £3  
Advance booking, Stroud Tourist Information Centre: 01453 750900

Stroud Choral Society  
01453 439000  
info@stroudchoral.org  
www.stroudchoral.org



## Wotton Charities Fair

**Saturday 24th November 2012**

This is the 17th year the Wotton-under-Edge Charities Fair has been held raising several thousand pounds for local charities each year. It takes place in the Civic Centre in Gloucester Street from 10am until 4pm. On sale will be Christmas gifts, books, toys, cakes and a host of other things. Morning coffee, lunch and afternoon tea will be available. If the charity you support would like to have a stall please ring Alison 843224 or Margaret 844129

## Craft Fayre

Chipping Sodbury Town Hall

**Saturday 3rd November 2012**  
10am-4pm

For more information or to book a table/place please contact Amanda on 07895 187292  
Tables cost £15 and must be booked in advance!

Voluntary entrance fee in aid of Charlie, aged 6, who is suffering from Birkitt's Lymphoma Cancer.

www.bythewoods.co.uk  
Email: amandabattle@hotmail.com

## Market & Craft Stalls

**10th November**  
**21st November**

In Tetbury Market House. 10am -4pm

## Table Top Sale

Chipping Sodbury Town Hall

**Saturday 10th November 2012**  
10am-4pm

For more information or to book a table/place please contact Amanda on 07895 187292.

Tables cost £15 and must be booked in advance!

Voluntary entrance fee in aid of Charlie, aged 6, who is suffering from Birkitt's Lymphoma Cancer.

www.bythewoods.co.uk  
Email: amandabattle@hotmail.com

## Charity Christmas Coffee and Crafts Morning

Chipping Sodbury Golf Club

**Saturday 24th November 2012**

Christmas coffee morning and Christmas crafts and goodies sale in aid of the Nicola Organ Cancer Foundation.

www.nicolaorganfoundation.co.uk

## Buskins Shoe Shop Nailsworth

- Ladies shoes
- Mens shoes
- Bags & purses

Tel: 01453 836836  
www.buskins.co.uk

## MORGAN Plastering Services



INTERNAL/EXTERNAL  
RENDERING  
ALL FINISHES  
COVING  
DRY LINING  
RELIABLE SERVICE  
15 YEARS EXPERIENCE

Call now for a quotation  
**01454 850294**  
MOBILE 07909 937226

## TRADITIONAL STONEMWORK & POINTING SPECIALIST

- Dry Stone Walling
- Brickwork & Blockwork
- Block Paving
- General Building
- Stone Tiling

**STEVE GREEN**  
01454 238454 (after 5pm)  
Mobile: 07813 245550



# Electric Picture House

*Run for the community by the community*

**Offering you the latest in digital widescreen technology with XpanD 3D.**

**Sit back, relax and enjoy the film in the comfort of luxury seating and surround sound.**

## **ParaNorman 3D, Cert PG, 92 mins.**

Norman (Kodi Smit-McPhee) is a misunderstood loner. However, his ability to talk to the dead comes in handy when the town comes under attack from zombies, ghosts and witches. .

**Saturday 27 October 4:30pm Sunday 28 October 2:00pm**  
**Saturday 03 November 4:30pm**

## **To Rome With Love, Cert 12A, 112 mins .**

Woody Allen's latest comedy follows the lives of visitors and residents of Rome and the romances, adventures and predicaments they get into. .

**Saturday 27 October 7:45pm Friday 02 November 7:45pm**  
**Thursday 08 November 7:45pm Tuesday 13 November 7:45pm**

## **Now Is Good, Cert 12A, 103 mins**

Diagnosed with terminal cancer, 17-year old Tessa (Dakota Fanning) determines to cram a life's worth of experiences into the time remaining to her. Also stars Jeremy Irvine and Paddy Considine.

**Wednesday 31 October 7:45pm Friday 02 November 7:45pm**  
**Thursday 08 November 7:45pm Tuesday 13 November 7:45pm**

## **Samsara, Cert 12A, 102 mins .**

Filmed over five years, five continents and twenty-five countries, Samsara is neither travelogue nor documentary, but an in-depth look at the relationship between mankind, and the rhythm and spirituality of the natural world. A visual journey across the globe, from Buddhist monks, to the jungle, to the cathedrals of Europe and the ancient temples of Asia.

**Saturday, 3rd November 19:45 Tuesday, 6th November 19:45**

## **Ruby Sparks, Cert 15, 104 mins.**

Calvin (Paul Dano) is a young novelist who achieved phenomenal success early in his career but is now struggling with his writing - as well as his romantic life. Finally, he makes a breakthrough and creates a character named Ruby who inspires him. When Calvin finds Ruby (Zoe Kazan), in the flesh, sitting on his couch about a week later, he is completely flabbergasted that his words have turned into a living, breathing person.

**Saturday, 10th November 19:45 Thursday, 15th November 19:45**  
**Sunday, 18th November 19:45**  
**Wednesday, 21st November 20:45**  
**Thursday, 22nd November 14:00**  
**Friday, 23rd November 19:45**  
**Tuesday, 27th November 19:45**

## **Coming Soon:**

**Skyfall, Cert 15, 145 mins – from 30 November**

**Untouchable, Cert 15, 112 mins – TBC for November**

**World Cinema - Monsieur Lazhar, Cert 12A, 94 mins – 04 November**

[Find us on Facebook - Electric Picture House](#)  
[Follow us on Twitter - @WottonCinema](#)

**Information is correct at time of going to press.**  
**Please call for the latest details.**

Wotton Electric Picture House  
18A Market Street, Wotton-Under-Edge, Glos, GL12 7AE  
01453 844601 - general enquiries  
(during opening hours)  
01453 844401 - 24 hour recorded message

**Mikki's**  
07970 868751

### **Mobile Clipping**

mikki.ponter@btinternet.com

- \* Bathing (Hydrobath)
- \* Drying
- \* Clipping / Scissoring
- \* Hand Stripping
- \* Ear Cleaning / Plucking
- \* Nail Trimming

**ALL BREEDS WELCOME**

*Dog walking / sitting also available*

*£ Competitive Prices*



**Mikki's**  
07970 868751

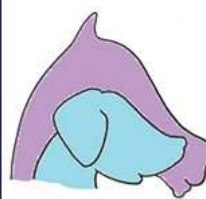
### **Mobile Clipping**

mikki.ponter@btinternet.com

- \* Neck & Belly
- \* Low Trace
- \* Chaser
- \* Blanket
- \* Hunter
- \* Full
- \* Mane / Tail Pulling

**Tack cleaning service also available**

*£ Competitive Prices*



# November Sudoku

Neil Fozard

For the uninitiated:-

to solve the puzzle, each row, column and 3x3 box must contain each of the numbers 1 to 9.

**EASY !!**

**NOT SO EASY !!**

|   |   |   |   |   |   |   |  |   |
|---|---|---|---|---|---|---|--|---|
|   |   |   | 7 |   |   |   |  | 8 |
|   |   |   | 4 | 2 | 1 | 7 |  |   |
|   | 5 |   |   | 9 |   | 4 |  |   |
|   |   | 7 |   | 3 |   | 8 |  |   |
| 6 |   |   | 2 |   | 8 |   |  | 5 |
|   |   | 1 |   | 4 |   | 2 |  |   |
|   |   | 3 |   | 8 |   |   |  | 2 |
|   |   | 4 | 3 | 6 | 2 |   |  |   |
| 8 |   |   |   |   | 7 |   |  |   |

|   |   |   |   |   |   |   |   |   |
|---|---|---|---|---|---|---|---|---|
|   |   | 2 |   |   |   | 8 |   |   |
|   |   | 4 | 2 |   | 3 | 7 |   |   |
| 8 |   |   |   | 9 |   |   |   | 2 |
|   |   |   | 7 |   | 6 |   |   |   |
| 9 |   |   |   | 1 |   |   |   | 7 |
|   | 3 |   | 9 |   | 4 |   | 6 |   |
|   |   | 5 |   |   |   | 1 |   |   |
| 7 |   |   |   | 2 |   |   |   | 5 |
| 4 | 2 |   |   |   |   |   | 7 | 9 |

**Answers to the October quizzes:-**

'Easy'

|   |   |   |   |   |   |   |   |   |
|---|---|---|---|---|---|---|---|---|
| 8 | 2 | 4 | 9 | 1 | 5 | 7 | 3 | 6 |
| 1 | 3 | 9 | 8 | 7 | 6 | 2 | 4 | 5 |
| 6 | 5 | 7 | 3 | 2 | 4 | 1 | 9 | 8 |
| 7 | 1 | 3 | 5 | 4 | 2 | 8 | 6 | 9 |
| 5 | 8 | 6 | 7 | 9 | 1 | 3 | 2 | 4 |
| 4 | 9 | 2 | 6 | 3 | 8 | 5 | 7 | 1 |
| 9 | 7 | 1 | 4 | 8 | 3 | 6 | 5 | 2 |
| 3 | 6 | 8 | 2 | 5 | 9 | 4 | 1 | 7 |
| 2 | 4 | 5 | 1 | 6 | 7 | 9 | 8 | 3 |

'Not so Easy'

|   |   |   |   |   |   |   |   |   |
|---|---|---|---|---|---|---|---|---|
| 5 | 6 | 8 | 3 | 7 | 2 | 4 | 1 | 9 |
| 1 | 2 | 7 | 8 | 9 | 4 | 5 | 3 | 6 |
| 9 | 4 | 3 | 6 | 1 | 5 | 7 | 8 | 2 |
| 8 | 5 | 4 | 7 | 6 | 9 | 1 | 2 | 3 |
| 7 | 9 | 2 | 1 | 4 | 3 | 6 | 5 | 8 |
| 3 | 1 | 6 | 5 | 2 | 8 | 9 | 7 | 4 |
| 6 | 8 | 9 | 2 | 5 | 7 | 3 | 4 | 1 |
| 4 | 3 | 5 | 9 | 8 | 1 | 2 | 6 | 7 |
| 2 | 7 | 1 | 4 | 3 | 6 | 8 | 9 | 5 |

## Baby Sitting & Pet Care

Fund raising for...



Going on holiday? Need a night out?  
Then, no need to worry..

I am responsible, reliable and have experience of looking after young children and caring for pets whilst you are away.

I am available at weekends and some weekdays.

Call Libby on 01454 238118

## The Secret Studio

*Beautiful creations made for you*

From our Studio in Petty France we sell hand-painted furniture and home & garden accessories. Furniture commissions also taken.

Open Tuesdays & Thursdays 10am-4pm

[www.thesecondstudio.co.uk](http://www.thesecondstudio.co.uk)

Ella M: 07976 952426 Jane: 07766 712066

## Coombe Farm Logs

in 1m3 bags (dumpy bags)  
Dry, seasoned hardwood logs

Free delivery

£50 per bag — 2 for £95

Call Tom Cole

Mobile: 07970911412

Home: 01454 238 896



## EAST & SONS

*Established over 100 years*

**PLUMBING AND HEATING ENGINEERS**  
**CORGI REGISTERED GAS INSTALLERS**  
**MEMBER FEDERATION OF SMALL BUSINESSES**

'ASHDENE', HIGH STREET, HAWKESBURY UPTON

Tel/Fax: 01454 238353

Mobiles: (07973) 359776 / 441692 / 503149

# Hawkesbury Contact List

| Group  | Contact  | Phone   | Website  | Email  |
|--|--|---|--|--|
| 1st Hawkesbury Upton Guides                                      | Louise Roberts<br>Jane Bleaken   | 238628<br>232993                                |  | <a href="mailto:louise.roberts622@btinternet.com">louise.roberts622@btinternet.com</a>   |
| After School Club  | Louisa Tooker or<br>Kim Anderson   | 238629 or<br>07527224741                        |  | <a href="mailto:hawkesburyasc@hotmail.co.uk">hawkesburyasc@hotmail.co.uk</a>   |
| Badminton Club   | Roy Townsend   | 238397  |  | <a href="mailto:roy.townsend3@btinternet.com">roy.townsend3@btinternet.com</a>   |
| Bethesda Chapel  | Mervyn Coates  | 01453 843771                                    |  |  |
| Brownies   | Liz Howard   | 238417  |  | <a href="mailto:lizhowardconsult@aol.com">lizhowardconsult@aol.com</a>   |
| Chipping Sodbury Police Station                                  | Non-emergency:<br>PC Mike Hart:<br>PCSO Rich Gay:<br>PCSO Sian Rolling :                 | 101<br>07919628618<br>0750006433<br>07825388927 |  | <a href="mailto:michael.hart@avonandsomersetpolice.co.uk">michael.hart@avonandsomersetpolice.co.uk</a>   |
| County Councillor  | Sue Hope   | 238673  |  | <a href="mailto:sue.hope@southglos.gov.uk">sue.hope@southglos.gov.uk</a>   |
| Cricket Club   | Martin Gardener  | 238526  | <a href="http://www.hawkesburycricketclub.co.uk">www.hawkesburycricketclub.co.uk</a>   | <a href="mailto:martin.gardener@cemex.com">martin.gardener@cemex.com</a>   |
| District Councillor  | Sue Hope   | 238673  |  | <a href="mailto:sue.hope@southglos.gov.uk">sue.hope@southglos.gov.uk</a>   |
| Evergreens   | Mandy Clarke   | 01454 261436                                    |  |  |
| Friends of St Mary's   | Pauline Setterfield  | 238307  |  | <a href="mailto:pleensetterfield@hotmail.com">pleensetterfield@hotmail.com</a>   |
| Gardening Club   | Terry Truebody   | 238364  | <a href="http://www.hawkesburygardening-club.org.uk">www.hawkesburygardening-club.org.uk</a>   | <a href="mailto:terry_truebody@bigfoot.com">terry_truebody@bigfoot.com</a>   |
| Hall Booking Secretary/<br>Village Calendar<br>Booking Secretary | Lorraine Rutter  | 07770 691024                                    | <a href="http://www.village-hall.org">www.village-hall.org</a><br><a href="http://www.hawkesburyupton.com">www.hawkesburyupton.com</a> | <a href="mailto:bookings@village-hall.org">bookings@village-hall.org</a><br><a href="mailto:calendar@hawkesburyupton.com">calendar@hawkesburyupton.com</a>   |
| Hawkesbury Horticultural Show                                    | Keith Player (Chairman)<br>Karen Hasted (Vice Chairman)<br>Vicky Rispin (Secretary)      | 238463<br>0796 331 8585<br>238262<br>232910     | <a href="http://www.hawkesburyshow.org">www.hawkesburyshow.org</a>   | <a href="mailto:keithjosieplayer@hotmail.co.uk">keithjosieplayer@hotmail.co.uk</a><br><a href="mailto:karen.hasted@lineone.net">karen.hasted@lineone.net</a><br><a href="mailto:vicky@the-hollies.co.uk">vicky@the-hollies.co.uk</a>   |
| Hawkesbury Primary School  | Louise Lewis (Head)  | 238629  | <a href="http://www.hawkesburyschool.ik.org">www.hawkesburyschool.ik.org</a>   | <a href="mailto:hawkesburyuptonprimary.school@southglos.gov.uk">hawkesburyuptonprimary.school@southglos.gov.uk</a>   |
| Hawkesbury PTA   | Becki Spokes   | 238841<br>07503 097554                          | <a href="http://www.hawkesburyprimaryschoolpta.com">http://www.hawkesburyprimaryschoolpta.com</a>                                      | <a href="mailto:debbiehawkesbury@googlegmail.com">debbiehawkesbury@googlegmail.com</a>   |
| Hawkesbury Stallions Football Club                               | Simon Warren   | 01454 238070<br>07800844935                     | <a href="http://www.hawkesburystallions.co.uk">www.hawkesburystallions.co.uk</a>   | <a href="mailto:simonwarren@talktalk.net">simonwarren@talktalk.net</a>   |
| Hawkesbury Upton Recycling Group                                 | Neil Bennett   | 07914 908211                                    |  | <a href="mailto:peterandpatsherry@tiscali.co.uk">peterandpatsherry@tiscali.co.uk</a>   |
| Hawkesbury Volunteer Transport                                   | Trip Coordinators: <i>(to arrange transport to medical appts.)</i><br>General Enquiries: | 0797 206 5665<br>0797 206 5496                  |  | <a href="mailto:alan_shewry@msn.com">alan_shewry@msn.com</a>   |
| Local History Society  | Barrie Hope  | 238673  |  | <a href="mailto:hope.poolfarm@btinternet.com">hope.poolfarm@btinternet.com</a>   |
| Methodist Church Schoolroom:                                     | Mrs Moira Coates   | 238479  |  |  |
| Methodist Church:  | Rev Debra Chidakwa   | 01454 853965                                    |  |  |
| Neighbourhood Watch  | Chris Rispin   | 232910  |  | <a href="mailto:chris@the-hollies.co.uk">chris@the-hollies.co.uk</a>   |
| Parish Council   | Hazel Bleaken  | 299227  |  | <a href="mailto:hazel.bleaken@gmail.com">hazel.bleaken@gmail.com</a>   |
| Parish News  | Vicky Rispin (copy/subs)<br>Fiona Rowe (copy)<br>Jill Bendeaux (ads)                     | 232910  | <a href="http://www.hawkesburyupton.com/parish_news.html">www.hawkesburyupton.com/parish_news.html</a>                                 | <a href="mailto:parishnewssubs@hawkesburyupton.com">parishnewssubs@hawkesburyupton.com</a><br><a href="mailto:parishnews@hawkesburyupton.com">parishnews@hawkesburyupton.com</a><br><a href="mailto:parishnewsads@hawkesburyupton.com">parishnewsads@hawkesburyupton.com</a> |
| Pre-School and Toddlers  | Sarah Green  | 07989 484 774                                   | <a href="http://www.hawkesburypreschool.org.uk">www.hawkesburypreschool.org.uk</a>   | <a href="mailto:enquiries@hawkesburypreschool.org.uk">enquiries@hawkesburypreschool.org.uk</a>   |
| Rainbows   | Louise Roberts   | 238628  |  | <a href="mailto:louise.roberts622@btinternet.com">louise.roberts622@btinternet.com</a>   |
| RAOB (Buffs)   | Iain Rae (Treasurer)<br>Peter Webb (Secretary)   | 238702<br>294916                                |  | <a href="mailto:iainrae@uwclub.net">iainrae@uwclub.net</a><br><a href="mailto:susan.peter@uwclub.net">susan.peter@uwclub.net</a>   |
| Royal British Legion   | Sam Allen  | 238417  |  | <a href="mailto:howrdallen@aol.com">howrdallen@aol.com</a>   |
| Senior Citizen's Fund  | Sam Allen  | 238417  |  | <a href="mailto:howrdallen@aol.com">howrdallen@aol.com</a>   |
| St Mary's Church   | Linda Fairney  | 01454 238 553                                   |  | <a href="mailto:william@fairney.wanadoo.co.uk">william@fairney.wanadoo.co.uk</a>   |
| Tennis Club  | Howard Bradley   |   | <a href="http://www.hawkesburytennis.org.uk">www.hawkesburytennis.org.uk</a>   | <a href="mailto:howardb@dexam.co.uk">howardb@dexam.co.uk</a>   |
| Theatre Group  | Jenny Harris   | 238411  |  | <a href="mailto:harris@backst.freeseve.co.uk">harris@backst.freeseve.co.uk</a>   |
| WI   | Gill Truebody  | 238364  | <a href="http://www.hawkesburyandhortonwi.org.uk">www.hawkesburyandhortonwi.org.uk</a>   | <a href="mailto:terry_truebody@bigfoot.com">terry_truebody@bigfoot.com</a>   |
| Youth Group  | Kath Harkness  | 238717  |  | <a href="mailto:kathrynharkness@btinternet.com">kathrynharkness@btinternet.com</a>   |

We do our best to keep the contact list up-to-date. Any changes should be sent to [parishnews@hawkesburyupton.com](mailto:parishnews@hawkesburyupton.com).