



# Hawkesbury Parish News

May 2015 Issue

40p

## Pledge Auction News



Hawkesbury Primary School PTA would like to say a huge thank you to everyone who supported our **Annual Pledge Auction** – either by pledging

items or by attending the exciting auction night! We raised over **£3000**, which will make a real difference to our school.

## Spring Charity Lunches

The six soup lunches were a great success and we raised £400 plus £100 donation - a total of £500 to send to Christian Aid.

I would like to thank all our supporters and to say spread the word to all your friends and neighbours to come and join us at

our future lunches just before Christmas.

Again thank you all for helping and enjoying the lovely home made soups and rolls, on behalf the Hawkesbury Three Churches.

*Mary Davies*

## Stop Press! Grand Opening for Preschool & Toddlers

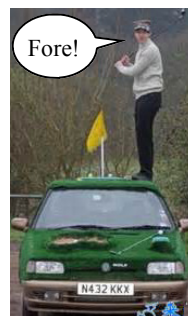
At time of going to press, the exciting news reached us that the **Preschool and Toddlers'** new **outdoor space** will have a **grand opening** next month. The great news is that wildlife TV presenter and producer **Nigel Marven** will be appearing to carry out the official opening. The proceedings will take place from 10:30am on **Friday 22nd May**.

## Hawkesbury Open Golf Championship 2015

**Saturday 8th August 2015**

Make a note in your diary, get the sticks out and get practising!!

Mayhem assured, as always!!



## The Parish Hall BIG Breakfast

On a blowy wet morning just after the clocks had gone forward we held the Big Breakfast in the Parish Hall. It was very well attended and we would like to thank all those villagers who turned out to support the event.

We raised a net total of **£423** through the breakfast proceeds and the raffle which will go towards a CCTV system to improve security around the Hall and general maintenance. We would also like to give a big thank you to all those who contributed towards supplying the breakfast:

- Audrey Cole
- Sue Hope
- The Beaufort Arms
- Hawkesbury Shop
- Karen & Andrew Morgan
- Morrison Supermarket, Yate

Together with Louise Roberts who organised the raffle and all those who provided prizes especially the voucher from the Fox. Also another big thank you to all the volunteers from the Management Committee who helped cook and serve the breakfast.

Many thanks from the Hall Management Committee

### Inside this issue:

Editorial	Page 2
Diary Dates	Page 3
Pre-School News	Page 4
Youth Club News	Page 5
Gardening Club	Page 8-9
Bingo Night	Page 10
WI News	Page 14
Cricket Club Trip news	Page 16
Tennis Club news	Page 17-19
Church Service details	Page 23/26
Parish Council News	Page 28-29

**PLEASE NOTE!!** Copy deadline for June issue: Friday 15th May

## Editorial

### Fiona Writes...

Welcome to the May issue.

As May arrives, the garden and greenhouse are in full swing. Seeds are popping through the soil on a daily basis and the hope is for a bumper veg harvest throughout the summer. This year we have planted a lot more flowers, to attract bees and butterflies, as well as to attempt "companion planting" to ward off certain pests and diseases. But, if all that fails, they will brighten up the garden at the very least!

Whilst in a well-known DIY store the other day, we were about to pick up bags of potting compost. The 3 bags for £12 sign looked a fair deal until we saw

that single bags were £3.85. Staff just looked bemused and shrugged when we tried to explain...(sigh!). One for those currently investigating the "bogus offers" in supermarkets, perhaps!

Over the past few weeks, it has been great to see a flurry of activity at the allotments, with many new people taking over plots and making a start on clearing and planting. Even the dog has now taken to craning her neck over the fence to check out who's out digging and planting every time we walk past!

Badminton Horse Trials loom once again and we can expect the usual influx of people from all over the UK and worldwide. The few days of extra traffic for the us as locals have to be worth it

for the trade it brings into the local economy and businesses. It's also very interesting to talk to some of the people who travel from as far afield as New Zealand and Australia to attend the event and stay in the locality.

Finally, May has the added bonus of two Bank Holidays, to give us all a boost. However, there are plenty of events to keep you busy in between, from Bingo to the Garden Club Plant Sale. Read on for full details!

Please note — the **deadline for the June issue** is the **15th May**.

All early copy is greatly appreciated.

## Parish News Team

Hawkesbury Parish News is edited, produced and distributed entirely by volunteers. Advertising and subscription revenue covers the cost of production only.

**Typesetting,** Fiona Rowe  
**Layout, Editorial:** [parishnews@hawkesburyupton.com](mailto:parishnews@hawkesburyupton.com)

**Treasurer & Subscriptions:** [vicky@coombeview.com](mailto:vicky@coombeview.com)

**Editorial Team:** Fiona Rowe  
Vicky Rispin

**Copy to:** Fiona Rowe, 24 Sandpits Lane  
Vicky Rispin, Coombe View,  
High Street (next to the Village Hall)  
[parishnews@hawkesburyupton.com](mailto:parishnews@hawkesburyupton.com)

**Advertising:** Jill Bendeaux  
[parishnewsads@hawkesburyupton.com](mailto:parishnewsads@hawkesburyupton.com)

**Distribution:** Pauline Dixon 01454 299236  
[pcdixon@waitrose.com](mailto:pcdixon@waitrose.com)  
Suzanne Flye

**Printed by:** Sprint Print,  
22 Station Road, Yate. 01454 852255

Electronic copy always gratefully received — please save files in Microsoft Word or Rich Text Format (rtf). Only digital photos sent by email can be accepted.

### Disclaimer

Any opinions expressed or implied within this publication are not necessarily those of the Editors. The Editors reserve the right to exclude any item whose authorship is not disclosed. No responsibility can or will be accepted for any opinion, comment or error of fact printed in this magazine. All advertising is included in good faith; its inclusion does not necessarily endorse the product or service.

## Useful Local Info



### Hawkesbury Village Shop

#### Opening Times

Mon - Fri - 8am - 1pm, 2pm - 6pm

Saturday - 8am-6pm

Sunday - 8am-12:30pm

High St, Hawkesbury Upton. Tel: 238639



### Hawkesbury Post Office

#### Opening Times

Mon: 9am-2pm

Thurs: 9am-1pm

Tues & Wed: 9am-12pm

Fri & Sat: 9am-5pm

Back Street, Hawkesbury Upton, GL9 1BB

Tel: 01454 238341 [www.hawkesburyuptonpostoffice.co.uk](http://www.hawkesburyuptonpostoffice.co.uk)



**Postal Collection (opposite shop)**  
Mon-Fri: 4:45pm / Sat: 10:30am

### Did you know that we have Websites for the Village and also for the Village Hall?

[www.hawkesburyupton.com](http://www.hawkesburyupton.com) and [www.village-hall.org](http://www.village-hall.org)

You can use these websites to:

- Check the Hall & Village calendars
- Book the Hall online
- View the Hall & Parish Council minutes
- View past editions of this magazine
- Link to many other village organisations
- and much more.

## Quote of the Month

If you even dream of beating me,  
you'd better wake up and apologize.

**Muhammad Ali**







# DATES FOR YOUR DIARY



**Next Parish Council Meeting**  
 The next Parish Council meeting will be on **Mon 18th May 2015, 7.30pm** in the **Methodist Hall, Back Street.**

Date for your Diary  
**1st Hawkesbury Guides Reserves Afternoon Tea**  
 Sunday 10th May 2.30pm in the Methodist Hall, Hawkesbury Upton Guide fund-raiser.

**POSTPONED DUE TO BADMINTON LOOKOUT FOR POSTERS WITH NEW DATE.**

 **Mobile Library**   
**Times & Dates**  
**11th May**

Hawkesbury Village Hall	2.35 - 3.00
Hawkesbury War memorial	3.05 - 3.20
Hawkesbury Highfields	3.25 - 3.40

HAWKESBURY THEATRICAL GROUP INVITE YOU TO PIT YOUR WITS AGAINST THEM IN -


**'A QUESTION OF DRAMA'**

A fun and interactive evening with questions on performances of songs and sketches that could include everything from Sondheim to Shakespeare!


ON SATURDAY 2 MAY AT 7.30PM IN HAWKESBURY UPTON VILLAGE HALL

Tickets £10 which include a Ploughman's Platter BRING YOURSELF, BRING A FRIEND OR BRING A TEAM (OF UP TO SIX)

Tickets available from Fiona Webb on 01454 238758 or email: [webbfamily@waitrose.com](mailto:webbfamily@waitrose.com)

**Coffee Mornings** 

Coffee Mornings take place on Mondays from 10am - 11.30am.  
 At Peggy Woffenden's house  
 Tea, Coffee and a biscuit or two for 50p.  
 All welcome.

 **SMALL, FRIENDLY YOGA CLASSES**  
 with Joan Boulton  
 at the Methodist School Room, Back Street  
*Thursdays 10-11.30am*  
 All ages and abilities. Just £6 a session  
 More details call 01454 238044

Hawkesbury Preschool Presents

**BINGO**

Sunday 17th May Hawkesbury Village Hall  
 3.30pm 5.30pm  
 Fantastic prizes for children and adults  
 Refreshments available  
 Half time hot dogs £1 £2 to play

Hawkesbury Gardening Club  
**ANNUAL PLANT & PRODUCE SALE**  
 in Hawkesbury Village Hall  
**Saturday 16th May 10am-12noon**

 Big selection of plants to buy – perennials, annuals, vegetables & more   
 Refreshments available

**Date for your diary**

After the event was so successful last year, St Mary's PCC will once again be holding an ecumenical Songs of Praise Service in the show marquee, on Sunday 30th August, starting at 11am.

Everyone welcome.  
 Betty Salthouse



**BUILDER'S RUBBLE, DEBRIS, GARDEN WASTE...**

Any old junk cleared and hauled away  
 I can do the job at less than it would cost to hire a skip...  
 AND you don't have to load it!

Call TOM COLE on 01454 238896  
 MOBILE: 07970 911412

 **PUMPKINS NURSERY**  
**Badminton and Tormarton**  
 Nursery care and pre-school education catering for children aged 1 – 5 years  
 Open all year 8am – 6pm  
 Nursery Education Grant funded sessions available  
**Forest School** sessions run at both settings  
 For more information or to request a prospectus contact Amanda Wallis on **01454 219400/218747**  
 Or visit our website: [www.pumpkinsnursery.co.uk](http://www.pumpkinsnursery.co.uk)





This month we would like to wish Neil (Charlie Butcher's dad) the very best of luck for the 26<sup>th</sup> April as he runs the London Marathon. He is raising money and awareness for beating bowel cancer. The cake sale we did last term raised £34, and Neil and Sophie would like to thank all of the parents for buying a cake or 2 and showing their support.

This term's theme is exploring food, the children will be able to see, smell and taste food from all over the world. We are also hoping the good weather is

## Hawkesbury Preschool Update

going to last so we can explore the outdoors, it's so much nicer doing it in the sunshine!

A massive thanks to the staff from Waitrose in Chipping Sodbury that recently came and helped paint our outside space, they did a brilliant job too. Our outside space is nearly completed and will have a grand star studded opening in May as of yet we don't have a date, but look out on our website for updates.

### Dates for your diary:

Our popular Bingo afternoon is back on Sunday 17<sup>th</sup> May from 3.30pm to 5.30pm in the hall. There will be amazing prizes as well as snacks, drinks and a raffle. Please book a table and

support our amazing little preschool.

**Sunday 30<sup>th</sup> August** Black Stag in the Hawkesbury show marquee from 7.30pm till late. Tickets are selling fast so please book your ticket before it's too late.

Do you have any old toys or clothes aged 2-6 you could donate to preschool? If you are having a spring clean please think of us.

Hawkesbury preschool is based in the parish hall, sessions run from: 8.45-12.30: Mon, Weds, Thurs & Fri (term time). For more information please contact one of our play-leaders: 07989 484774 /

[enquiries@hawkesburypreschool.org.uk](mailto:enquiries@hawkesburypreschool.org.uk) / [www.hawkesburypreschool.org.uk](http://www.hawkesburypreschool.org.uk)

### HAWKESBURY TODDLERS WELCOMES YOU

Come along to our relaxed & friendly parent/carer and child group – everyone welcome, from bump and up!

Tuesdays in term time. 09.45-11.45. Hawkesbury Upton Village Hall.

Enjoy a cuppa while the toddlers enjoy our toy collection, craft session, snack, music, books & much more.

'Like' our Facebook page '[Hawkesbury Upton Toddler Group](#)' to receive info on news and events.



## Young Hawks After School Club

We aim to provide quality childcare at an affordable price and to offer a place where children can play freely and interact socially in the care of trained staff



### Welcome to Hawkesbury After School Club.

We are a charitable company, based within Hawkesbury CE VC Primary school and offer affordable childcare to the children of Hawkesbury and its surrounding area. We provide a safe, welcoming environment where children are able to interact socially and further their knowledge through play and their interests. We provide a wide range of resources and activities to support each child's individual interests and level of development. We offer planned activities, however children are encouraged to choose the direction of their play and are supported by staff in their choices.

**HOURS:** 2.30pm until 6pm. Monday to Thursday

**For further details please contact Louisa Tooker (Manager/Senior Playleader) on the contacts below during after school club hours. Otherwise contact the school office (during school hours) who will be happy help.**

**Tel: 07527 224741 email: [louisa.tooker@hawkesbury.org.uk](mailto:louisa.tooker@hawkesbury.org.uk)**

Registered with Ofsted number: EY429151 Registered Company number: 07217551 Registered Charity number: 1144048

### SEVERN VIEW FARM

Sold on Taste

Boarding Cattery  
01454 299471



Warm, comfortable, secure holiday accommodation for cats.

Special diets and medicines catered for

### Severn View Farm Lamb Packs

Whole or half lamb packs from our organic Shetland Sheep.



£12.00 per kilo prepared weight. Expect about 3.5 kilos for half a lamb.

Call Pauline on 01454 299236 or Email [pcdixon@waitrose.com](mailto:pcdixon@waitrose.com)

### PEGASUS HEATING AND PLUMBING

OFTEC Registered C8787  
GAS SAFE GAS INSTALLER No 68606

- ◆ Oil, Gas and Solid Fuel
- ◆ Installations and Repairs
- ◆ Bathrooms and Kitchens
- ◆ Domestic and Commercial
- ◆ Lead work specialist

ALL WORK GUARANTEED

Tel 01454 327708 Mobile 07860 471232



## Hawkesbury Youth Club News

**What a difference three weeks makes!** Our last session of the spring term was a night hike on the Cotswold Way (Yellow Brick Road section), requiring torches and caution. Thanks to the clocks springing forward over the Easter holidays, the first session of the summer term was held in glorious sunshine on the Rec. Here's hoping we'll have lots more evenings like that this term.

**Decorating Plans** In the meantime, we're spring-cleaning our storecupboard upstairs - the low-ceilinged space behind the brown double doors in the upstairs room of the Village Hall.

With a bit of creativity and some new furniture, we're going to transform it into "The Cafe in the Cupboard", a teen and pre-teen friendly space in which friends may enjoy drinks and snacks from our ever-popular tuck shop.

We're also very excited to be working with the Village Hall Committee to revamp the upstairs room for the benefit of all hall users. Together we've already come up with a list of great ideas, but a professional view on decoration schemes would be invaluable. If there's anyone in the village with interior design skills who would like to volunteer to

give us some guidance, please don't hesitate to get in touch.

**This Month's Meetings** Only two meetings this month, due to half term at the end of May: 12th and 19th May from 7pm until 8.15pm.

**Like to Join?** All young people in the parish aged 11 are welcome from the beginning of the school term in which they turn 11, and may continue until they're 18. Just come along on any club night to find out more about it. Weekly subs: £2 Annual membership fee: £5

**For More Information**

Contact Debbie Young – tel 238401/ text 07594 717891/ [debbiehawkesbury@googlemail.com](mailto:debbiehawkesbury@googlemail.com).



## Hawkesbury Upton Post Office

**May 2015 marks our 2nd Anniversary!**

The Post Office has a fabulous new range of Children's books and educational games now in stock. We also have lovely new fashion scarves, special horse and riding designs just right for Badminton. Arts & Crafts : we have a lovely range of craft kits for the kids, just right for an entry in Hawkesbury Show, embroidery, knitting, cross stitch, painting and even crochet needles !!

We have lovely ranges of handmade soaps and cosmetics from The Cotswold Handmade Soap Company and a luxurious range of paraben free lotions, gels, cosmetics and sleep aids from the Cotswold Lavender Company.

Drop in and have a browse anytime, as well as the new Cheque and Cash paying in facilities on offer (please ask for details if you are unsure) we might just have something that you never knew you needed !!

And we sell stamps occasionally.....

- Postal Services - Banking Services
- Free Cash Withdrawals - Health Lottery
- National Lottery - Premium Bonds
- Home Phone & Broadband
- Scratch cards - Foreign currency
- Gift Cards & Vouchers
- Stationery products - Cards
- Gifts - Books - Toys - Games
- Coach Travel

Back Street, Hawkesbury Upton  
Tel : 01454 238 341

[www.hawkesburyuptonpostoffice.co.uk](http://www.hawkesburyuptonpostoffice.co.uk)

Gloucestershire Wildlife Trust  
Lower Woods Nature Reserve

Ancient Woodland Adventure  
Sunday 10th May 2015  
10:00am - 1:00pm

Join us to look for wildlife.  
Come and learn about woodland wildlife and look for clues of past management.

**Price / Donation:** £1.50 per person  
**Time:** 10:00am - 1:00pm  
**Audience:** Families. Suitable for 5+ years

**Venue location:**  
Lower Woods Nature Reserve ,  
Inglestone Common, Wickwar, South Gloucestershire ,  
GL9 1BY



Would you like cash for something round the home that you no longer want/need/like?

**Well, why not sell it on ebay?**

I have been active on ebay since 2001 and my 100% positive feedback is as a result of more than 800 deals. For a percentage I will deal with everything including taking photos of the item, setting up the auction on the ebay website, dealing with any queries from buyers, receiving the sale proceeds and posting off the item for you. Some items might attract a better price at a local auction house, and dealing with this is another service I can offer. You can set the starting price and if required, set a reserve price. Any questions, call me on 238778, email me at [mickbendeaux@hotmail.com](mailto:mickbendeaux@hotmail.com) or come and see me at 20 Birgage Road.

## ANTHONY HARCOURT OSTEOPATH & ACUPUNCTURIST

No 3 Horse Street,  
Chipping Sodbury  
BS37 6DA

Tel: 01454 326256



## 1st Hawkesbury Upton Rainbows

As usual it's been a fun filled term, that has flown by. We have 22 Rainbows at the moment from Hawkesbury and surrounding villages-more than we've ever had, so it certainly keeps us on our toes!

We've joined in the Flat Olivia badge challenge, which has been great. Olivia is our Rainbow mascot (named after Olave Baden-Powell, who helped start Girlguiding over a hundred years ago). We coloured in cut-outs of Olivia and then wrote a bit about ourselves and, along with a postcard, posted off 26 envelopes all over the country to other Rainbow Units. We've had letters back, other Flat Olivias to visit and have learned what other Rainbow Units get up to up and down the country. We had a map on the wall and marked where they all came from. All the letters and pictures are now in a scrapbook that we can look

back on. We especially liked marching along to the postbox, singing loudly, to post our envelopes-the post man even opened up the box so we could see inside!

We've also enjoyed singing around the 'electric campfire' (a converted table lamp!!) as well as playing lots of games!

We've just completed the Gruffalo Badge challenge, by creating our own owl ice cream (not made with real owls!)-it was great fun. As part of the challenge we went to Westonbirt Arboretum in search of the Gruffalo-we only just managed to find it before it became dusk!

We collected sticks, leaves and pine cones and made lovely dream catchers.

After Easter we'll be doing a bit more towards our Rustle, Bustle and Squeak RSPB challenge badge, learning about nature and seeing

what we can do to help -you may see us out and about (you'll definitely hear us!), so please give us a wave.

We were lucky enough to get a grant of £75 from the Parish Council which will go towards our summer trip.

After Easter we will also be wearing our new blue neckerchiefs with county badge. As the uniform changes from tabard to polo shirt we thought it was a good way to link the two.

Sadly the familiar purple tabards are no longer official uniform but can be worn as 'play wear'-they were certainly a good place to sew on all the badges and made it easy to spot girls when we were out and about. Maybe we'll invest in some to keep for trips out....sounds like a bit of fundraising might be needed, as well as buying the official Rainbow flag, which would be great to see, especially on Remembrance Sunday...so watch this space!

**Louise**

## Rocky

Thanks for all the kind messages, cards and flowers received on the sad and sudden loss of our beautiful dog Rocky.

He really was a special boy who loved everyone he met. Rocky had made many friends over the years whilst out walking, socialising in the village pubs and helping out at the cricket field! He also had lots of friends in and around Lulworth Cove, where he spent his holidays, enjoying coastal walks and swimming in the sea!

We were so lucky to have had him in our lives, and will never forget him.

**Stephen, Hilary, Tom and Joe.**



- Physiotherapy
- Homeopathy
- Podiatry
- Chiropractic
- Aromatherapy
- Reflexology
- Acupuncture
- Holistic Massage
- Sports massage
- Nutritional Advice
- Pilates Exercise Classes

### TOLL HOUSE CLINIC

Freephone 0800 0936 362 Telephone 01454 32 22 32  
www.tollhouseclinic.co.uk  
47 Horse Street, Chipping Sodbury, BS37 6DA



PLUMBING  
AND HEATING

BOILER  
SERVICE &  
SYSTEM  
MAINTENANCE

### FOR OIL BOILER AND AGA/RAYBURN SERVICE

Tel: 01666 504911 or 07867 434345  
or email:

[info@indplumbingandheating.co.uk](mailto:info@indplumbingandheating.co.uk)

OFTEC REG. NO: C4634  
Grant Boilers Accredited Installer  
[www.indplumbingandheating.co.uk](http://www.indplumbingandheating.co.uk)



## Easter craft morning at The Methodist Hall – Sat 28<sup>th</sup> March

On a rather wet and gloomy Saturday morning we met for some Easter fun and crafts to brighten the day. We made Easter cards, Easter biscuits, gift boxes, chick, sheep and bunny masks and planted seed pots.

We also coloured in a lovely Easter tablecloth. There was an Easter egg hunt and we all had some chocolate eggs and a chocolate bunny lollipop. Mums and dads enjoyed a cuppa and an Easter biscuit, too.

Congratulations to Sophie who won the free prize draw for the “Real Easter Egg.”

Many thanks to all the helpers.  
Sara Couzins-Short



### William Houghton Burdon, ‘Bill’ 24. 2.1923- 26.3.2015

Richard, Louise, Greg, Ellie and Polly would like to thank everyone for all the lovely messages of condolence following Bill’s death. Thanks to those who joined us throughout the day, to celebrate his life and give him a fitting send off.

He felt blessed to have been made to feel so welcome in the village, and we are grateful for that. Money collected after the service gave Hawkesbury Show £114 and Evergreens £135, both of which he enjoyed.

\*\*\*\*\*  
\* **Thank You** \*  
\* I would like to thank everyone \*  
\* for their lovely cards, flowers \*  
\* and get well wishes that I \*  
\* received during my recent stay \*  
\* in hospital. \*  
\* The continued help from my \*  
\* family and friends is much \*  
\* appreciated. \*  
\* Daphne Niblett \*  
\* \*\*\*\*\*

### The Farm Shop at Hawkesbury

A J Morgan Farm Produce, France Lane Farm,  
Hawkesbury Upton, GL9 1AN

Home Reared Pork, Lamb & Aberdeen Angus Beef  
Free Range Poultry, Home Made Produce.

**DO YOU KNOW WHERE YOUR FOOD COMES FROM?  
TRY US-BUY LOCAL - We're NOT expensive!**

*Shop open 10am-1pm weekends.*

*Free local deliveries. Contact Karen 07929 947149*

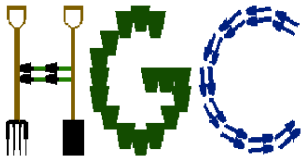


### THE HEALTH SHOP

27a Horse Street, Chipping Sodbury  
BS37 6DA. Tel: 01454 322168

Range of wholefoods including: special diets,  
Dried fruit and nuts, herbs and spices,  
Herbal and homeopathic remedies,  
vitamins and supplements,  
aromatherapy oils,  
Bach flower range





TROWEL &amp; ERROR

## HAWKESBURY GARDENING CLUB

### Trip to Hestercombe Gardens

### Saturday 30<sup>th</sup> May



**Coach and entrance - £20 HGC members,**  
**- £23 non members**

Our coach trip this year is to Hestercombe Gardens, near Taunton, stopping at Cadbury Garden Centre on the way back.

**There is space on the coach so we would be delighted to have you join us for another exciting day out. Non members are welcome.**

If you have joined us before, you will already know that we have visited some lovely gardens and had great days out.

Hestercombe is set in 50 acres and is a unique combination of 300 years of garden design with much to see and do - from a stroll in the Georgian Landscaped Gardens, or the Victorian Terrace and Shrubbery to the stunning Edwardian Garden designed by Edwin Lutyens and Gertrude Jekyll. Not to mention the 17<sup>th</sup> century watermill with Dynamo House and Mill Room with historical machinery. Also not to be missed are the Terraced Walk, the Great Cascade and Ponds, the Dutch Garden, Orangery, Rotunda, Pergola and Sunken Parterre and even a charcoal burners camp. Not to mention a flower or two!

The house was restored and partially opened last year to house a tea room, book shop and gallery. There is also a plant centre and shop and the Stables Kitchen for light bites, lunches and refreshments.

The coach will leave The Plain, Hawkesbury Upton at 8.30am, returning at approximately 6pm. To book tickets, or for information, please contact: -

**Lucy Kantaris on 01454 238176 or email [luciais@btinternet.com](mailto:luciais@btinternet.com)**

Made to Measure Curtains & Blinds



## Curtains and Blinds

Choose in the comfort of your own home

Call Grant on

t: 01453 521751 m: 07799 822691

Charfield • Wotton-under-edge

A local service with 25 years experience

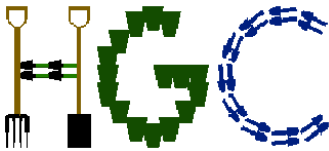


**Hawkesbury Village Hall**  
 Mon, Wed, Thurs & Fri 8.45 - 11.45am

**All children are welcome**  
**from two years old**

Please contact us on  
 07989 484 774

Charity number 1013170 Ofsted Registered 136003



# HAWKESBURY GARDENING CLUB

[www.hawkesbury-gardening-club.org.uk](http://www.hawkesbury-gardening-club.org.uk)

## TROWEL & ERROR

Meetings are held at 8pm on the 4th Monday of the month in the Methodist Hall in Back Street.

I found this amusing extract by Anne Wareham about garden pests in a magazine :-

'One person's amazing solution to deter pests does abso-lutely nothing for the next person. All pests are not equal: some are easily foiled but others have uncanny abilities.

It is a mystery, for instance, why some slugs, with apparently little brain or expertise, in experiments will happily find a way to scale any obstacle, even a razor blade or shards of glass, while others are deterred by a lit-tle grit. The progress of slugkind depends on defeating human inge-nuity.

We are told that some moles run a mile from the noise of a child's windmill stuck in the ground. Others would not be deterred by a landmine but would plough on relent-lessly through your lawn.

The lesson is to know your own pests, to watch them and to learn from their behav-iour, see what dents their confidence. In particular watch those pesky squirrels. You will need their persis-tence, determination and ingenuity to stand a chance of protecting your garden.

But at all costs beware the garden expert. Your

desperation will make you vulnerable and eager for 'infallible' solutions, but the gar-den 'expert' has acquired this status by no better means than having attended a hor-ticultural course some time in the previous century, or perhaps having written amiable nonsense about deterring deer with lion dung.'

Our speaker for March was Sally Nex who gave a talk on 'Behind The Scenes At Chelsea'. Sally is a garden journalist and is able to see what goes on at shows before the public is allowed in. Chelsea is particularly interesting in that in order to remain the best flower show in the world the exhibitors have to comply with very strict rules. What we see on the day has involved some very intricate, painstaking and expensive work behind the scenes. Nevertheless there is always humour and camaraderie in abundance.

There will not be a meeting in May. Instead we are going on a day trip to Hestercombe Gardens near Taunton – ooh! LOVELY! See you there?

If you are not a member but would like to hear a speaker that takes your fancy then come along as a guest – fee £3.00. For further information contact Terry Truebody on 01454 238364



## IGNORANCE IS BLISS

By Alan C. Porter



I've decided that living in blissful ignorance is the perfect way to survive in today's frantic world, and I smile because I have absolutely no idea what's going to happen next.

You may wonder what's brought about this apparent negative approach to life? I put it down to reading the back of a packet of green tea. I hear you say, this lad needs to get out more, but great things can be learned from packets.

In this instance I was told green tea was a great source of anti-oxidants.

I have no idea what an anti-oxidant is or why it should be good for me. It sounds like something you slap on an iron gate to stop it from going rusty.

Then there are free radicals. Are they perhaps a political party I should be voting for?

Finally, I recently found myself driving on the M3 and was greeted by signs informing me that this motorway was soon to become a "smart" motorway. I think I'll stick to the "daft" ones.

Ignorance is bliss, so the saying goes and I wholeheartedly agree.

### Blueberry Nails

Flexible, mobile Nail Salon coming to Hawkesbury (May 2015) & outlying villages

Manicures and Pedicures...catering to all needs!

Pampering for yourself, a special occasion or perhaps as a special treat for a child's party?

Please see Parish Magazine for details of future website/ email.





**R&B VEHICLE SERVICES**  
Est. 10 years

**01454 238700**

REPAIRS, SERVICING  
DIAGNOSTICS, BATTERIES  
TYRES, EXHAUSTS  
FOR CAR, 4 X 4 & LIGHT VANS  
FREE LOAN CARS AVAILABLE  
YOU CAN NOW BOOK YOUR MOT  
ONLINE AT  
[www.mottetbury.co.uk](http://www.mottetbury.co.uk)



BAY 4 KNOCKDOWN  
1 MILE FROM WESTONBIRT ARBORETUM

**COST EFFECTIVE MAINTENANCE AT A FRACTION OF DEALER PRICES  
CALL RICHARD OR BEN FOR FRIENDLY, RELIABLE SERVICE**



## Small Ads

### For Sale

In perfect working order and can be viewed in our home prior to purchase as priced.

1) **Samsung LE26B450 26"**  
**Television** plus its own stand    £120

Also available

2) **Cantilever wall fitting bracket**    £15

Which keeps the TV flat against a wall until required for viewing  
Please phone Moira and Neil Fozard on  
01454 238 281.

## Spring Clean up !

As part of the "Spring Clean up" Tim and I took on Bath Lane. We collected the usual bottles and cans, but most of the collection was "dog poo bags" which had been thrown into the hedges and on the banks.

Whilst I think it is great that people clean up their dogs - PLEASE DO NOT LEAVE FULL BAGS AROUND THE COUNTRYSIDE.

Also due to the number of dog on dog attacks it would make exercising dogs much pleasanter if, when you see an on lead dog approaching, you could call your dog back and/or put it on lead - Please

Mary D

## Hawkesbury Preschool Presents



**Fun for all the Family,  
Young or old**

**Fantastic prizes for children and adults**

**Refreshments available**

**Half time hot dogs £1**

**£2 to play**

**Hawkesbury Village Hall**

**3.30pm 5.30pm Sunday 17<sup>th</sup> May**

**Doors open at 3pm, play starts at 3.30pm**

**Further information from Laura Chappell 07528 064321,  
Nicole Wilkins 07979 121060 or pop into Toddlers**

### DEB'S CELEBRATION CAKES

**Individually designed cakes for  
weddings and special occasions**

**Workshops** - have a go yourself  
and learn a new skill

Please contact me to find out more,  
discuss ideas or see my work

**DEB PIDSLEY 01453 834394  
07890292125**

[www.debscelebrationcakes.com](http://www.debscelebrationcakes.com)

### FIREWOOD

**Dry seasoned hardwood logs,  
delivered cut and split to your  
requirements.**

**We also sell kindling and coal.**

**Lower Kilcott Farm**  
Call Steve Thompson  
*Home: 01454 232941*  
*Mob: 07974 194012*

### NE odd jobs

**A fully insured, professional  
and reliable service**

- Garden maintenance
- Weeding, grass cutting
- Cleaning
- Painting

**... as well as all those other little jobs  
you just never seem to get around to.**

**Call: Nicola Evered**

**07947 072780 or 01453 844124**



# CALLING ALL HOME-BREWERS.....



This year there will be a **Home-brewed Beers Class** in the **Village Show**, so over the next two or three months we hope that the many home-brewers in the village and area, (and the even more who never have brewed but would like to have a go...), will get busy brewing some exceptional beers to fill the table at the Village Show on 29th August - about four months from now.

The rules are very simple:-

- There will be 4 sub-classes, based on colour:-
  - **Lager / Blonde Ale** (straw coloured)
  - **Pale Ale / Golden** (pale to dark gold)
  - **Bitter** (dark gold to chestnut)
  - **Porter/ Stout /Mild** (dark red to black)
- Beers must be home-brewed, and presented in 500ml clear glass bottles (crown-capped, spring-capped or screw-capped), and labelled with a tied-on label around the neck

indicating the sub-class.

- **Judging** will be by our **National Prize-winning** local experts **Mark Frankcom of Cotswold Spring Brewery** and **Steve Mc Donald of Severn Vale Brewery**, who together form the **Combined Brewers**.
- The judges will take into consideration the following **key aspects of a good ale**:-
  - **appearance in bottle**
  - **pour and condition** (i.e. gas),
  - **smell**,
  - **taste, &**
  - **finish**.

Home-brewing using kits is really easy, and for the beginner there are some great kits available which can deliver really good beer with the minimum of equipment. You can buy them at shops like Tesco and Wilko, from local home-brew shops, and online.

The more experienced home-brewers may like to go for partial-

mash or full-mash, the latter emulating what is done using malt and hops in larger scale in real-ale breweries.

Home-brewed beer takes about a month to mature to "fit-for-drinking stage" and is probably best at 2 to 3months old... so now is the time to start planning your brew.

If you are interested in the competition and would like to know more, or if you are interested in home-brewing in general, please get in touch with me, Chris Chubb, [chris@chubbs.co.uk](mailto:chris@chubbs.co.uk), Mobile:- 07554995671.

I will be happy to pass on such knowledge of the ancient craft as I have developed over the years.....!!!

If there is enough interest we might form a Hawkesbury Upton Beer Brewing club to pursue developing the craft again in the village that once boasted at least seven Maltings....

Happy Brewing ! .....and even Happier Drinking!!

Chris Chubb

## Didmarton Flicks in the Sticks "The Theory of Everything"

Friday 15th May  
at 6:30 for 7:30pm

Tickets in advance from [jenny.body@virgin.net](mailto:jenny.body@virgin.net) or  
01454 238358 07875406637

### 6 Nations Rugby Prediction Competition

Many thanks to all who took part. A donation has been made to the Senior Citizen Christmas Fund.

	<b>WINNER £100</b>	<b>115</b>	Rowland Eyers
<b>137</b>	Heather Burgham	<b>115</b>	Mark Steeds
	<b>RUNNER-UP £50</b>	<b>115</b>	Howard Bradley
<b>121</b>	Chris Rispin	<b>113</b>	Paul Gardener 1
<b>120</b>	Carol Fowler	<b>112</b>	Mick Bendeaux
<b>119</b>	Angelo Sauro	<b>111</b>	Andy Kendall

Thanks once again to Mick Bendeaux for organising another excellent fundraiser and source of banter, and congratulations to Heather! Ed

**DOCTOR DRIVE**  
www.doctordrive.net



School Of Motoring - Free Theory Tuition  
Block Booking Discounts  
Gift Vouchers Available

Pass Plus = Cheap Insurance  
Recommend a Friend Scheme

Contact Chris 01453 842084  
07970 274373

*Wedding Day Wagon*



Contact Chris - 01453 842084  
[chris@weddingdaywagon.co.uk](mailto:chris@weddingdaywagon.co.uk)  
[www.weddingdaywagon.co.uk/](http://www.weddingdaywagon.co.uk/)



To advertise your company or services in the Hawkesbury Parish News, email us at :  
[parishnewsads@hawkesburyupton.com](mailto:parishnewsads@hawkesburyupton.com) and reach a wide local audience.

# 4th Annual Hawkesbury Upton 5k Run

## Saturday 20th June 2015, 11 am sharp

Open to all ages and abilities  
(from primary school age upwards)

Run, jog or walk the HU5K route, either to get a top time, or just for fun. All finishers awarded an exclusive medal, with winner's medals for the fastest runners in each age category. Download a sponsorship form from our website if you would like to use the run as an opportunity to raise money for your favourite cause.

**"I can't recommend this run highly enough...this pretty village in Gloucestershire has developed a very well run, friendly and excellent event."**

*Runner on realbuzz.com blog*



For everyone's safety and enjoyment we are capping the number of runners at 300 and places fill fast so register and pay online now [www.Hu5k.org](http://www.Hu5k.org) or download an application form. We are not taking any registration on the day so pre-registration is essential.

**Fees:** Children at primary school (up to 11) **£4**; Secondary schoolers & students (11-18) **£6**; Adults (18+) **£8**

Find us on Facebook: [www.facebook.com/HU5KRun](http://www.facebook.com/HU5KRun)

Follow us on Twitter: [@HU5Krun](https://twitter.com/HU5Krun)

Email us at: [info@hu5k.org](mailto:info@hu5k.org)

**This year the fun doesn't stop after the run - there will be a BBQ, stalls, entertainment and family fun to enjoy too!**



Sponsored by NWF Fuels.  
Local suppliers of home heating oil  
01454 273077



**CHIM-CHEROO**  
PROFESSIONAL CHIMNEY SERVICES

- Woodburners, open fires, Agas etc
- Member of the Institute of Chimney Sweeps
- Fully insured
- CCTV inspections
- Blockages removed
- Safety certificates issued
- No mess

Hire a lucky sweep for your wedding!

Richard Stone  
07805 330 961  
[chimcheroosweep@yahoo.co.uk](mailto:chimcheroosweep@yahoo.co.uk)  
24 Gloucester Street, Wotton-under-Edge, Gloucestershire, GL12 7DN

### Hayley Jackson MCFHP MAFHP Foot Health Professional

A small well established business based in Brimsham Park, Yate.  
A full range of Foot Health Treatments including:

- Nail Cutting
- In growing Toenails
- Verrucae
- Corns and callus
- Heel Fissures (*Cracked Heels*)
- Nail conditions

Tel 01454 314460/07846452000

[www.hjtherapies.co.uk](http://www.hjtherapies.co.uk) / Email: [hayley@hjtherapies.co.uk](mailto:hayley@hjtherapies.co.uk)

Home Service now available  
Introductory offer - £10 off your first treatment



## What about gardening in a different way?

It seems that we've all worked the soil in the same formal fashion where we've had the veg. patch and the herbaceous border and maybe the allotment with neat rows of stuff to eat, which are all the same length whether or not we like all the crops to the same extent and they will stand the same amount of time before going over. Maybe it's about time we re-assessed our ideas to take into account what is best for our gardening needs and pleasure rather than what's expected of us. French gardeners grew much of their produce in what was called a potager, which was a kitchen garden which looked nice. The name is derived from the French word for soup i.e. le potage, and was a plot where they could grow something for the pot, and still retain an attractive area near the

house. The over-riding idea however, was the lack of division in the growing of plants just because some were eaten and the rest were just to look at. Aside from the look of the garden, other benefits to be gained are the attraction of different insects into the plot which will aid in pollination and protection from pests. For instance, a few marigolds dotted about a brassica patch, can be instrumental in deterring aphids without the need for sprays. In the standard flower bed, chard of the "Bright lights" variety will add reds greens and shades between as well as a bit of height, to the look of the bed, as well as something tasty to eat over many weeks. What about a wigwam of climbing



french beans, maybe some with white flowers and some red among the roses, which will give pretty flowers, then a crop afterwards, with a new architectural look to the plot. It should be borne in mind also, that many of what we think of as ground-hugging plants will grow perfectly well vertically if supported. A golden courgette or a small squash such as Patty pan will look excellent grown up a trellis, at the back of any plot and if grown like this will also save space in the plot.



As long as it is remembered that contrasts in size, shape and colour should be considered in laying out the plot, the only rules are the rules we set for ourselves.

**Brian Noble**

HAWKESBURY LOCAL HISTORY SOCIETY

An opportunity for to see for yourself!

### Arnos Vale Cemetery, Brislington, Bristol

Following April's talk we have arranged a guided tour to see the extraordinary architecture and park-like landscape of this finest example of a fully restored Victorian Garden Cemetery for ourselves. A great opportunity, whether or not you heard the talk!

**Wednesday 13<sup>th</sup> May, 2.00pm**

All welcome Members £7, Non-members £10

To book: Please contact Neil Fozard

Tel 01454 238281 or email: [neil@thefozards.co.uk](mailto:neil@thefozards.co.uk)

As car parking is limited, we encourage car-sharing

Why not make it a 'day out' in Bristol?



#### just sew mary – sewing bee!

Come and get creative! Stitch, patch, sew and quilt

Learn new techniques, share tips and laughter!

2nd Tuesday of the month 7-9pm at the

Methodist Hall

For details and to reserve your space contact

Mary Chancellor 07592006440

[justsewmary@hotmail.co.uk](mailto:justsewmary@hotmail.co.uk)

#### The Fleece Inn, Hillesley

A thriving, friendly local pub, under community ownership  
– a Free House offering local real ales



**Open from midday, 7 days a week**



Good quality food at sensible prices available lunchtimes and evenings. Parking, Beer garden &, play area. 'Panda', Mary, Simon and the team would love to welcome you to  
The Fleece

[www.thefleeceinnhillesley.com](http://www.thefleeceinnhillesley.com)

01453 520003





## Hawkesbury & Horton WI

Horton Hall was the venue for our April meeting and it was nice to

welcome several guests who were interested in discovering more about "Upcycling" the theme for the evening with a talk and demonstration given by member Chris Taylor aided by daughter Joanna. Chris is a passionate advocate for taking something no longer needed and making something useful and pleasing to eye from it. Her motto is reduce, re-use, and make do and mend as much as possible. Who would know her beautifully finished oven gloves had been lined with felted woollen jumpers and old nappies? We were all inspired by her delightful Alice in Wonderland doll and Puppet theatre made for a Brownie Holiday. And her bias binder maker was a winner! Those members following her example couldn't wait to get one! Hopefully we'll see some of the

results at our next meeting when the competition is for something upcycled.

The Spring Meeting at Weston-Super-Mare celebrated 100 years of the NFWI and 40 years of AFWI and we were reminded that Avon Federation was formed in 1974 when the council was looking at enlarging Bristol and county boundaries were changed. Avon Federation was made up of two thirds from Somerset and a third from Gloucestershire. It was quite a controversial move then, but over the years it has become a very successful Federation with its present headquarters in Keynsham.

Main speaker of the day was Jane Robinson who has recently published "A Force To Be Reckoned With" A History of the WI. She said few people appreciate just how far its members have been responsible, over the decades, for moulding modern Britain. And highlighted how many of the feistiest women in

Britain joined its ranks in 1915 including suffragettes, academics and passionate social crusaders; in those days women didn't even have the vote.

Quiz Results: Team Barbara Harvey, Jenny Harris, Pat Sherry and Julie Law came second at Marshfield. A good outcome as there was about 30 teams taking part.

### Diary Dates

**5th May** Resolutions Evening and Beetle Drive Competition Sample of Upcycling

**May 11th** Treasure Hunt at Nailsworth, meet at 1pm on Plain

**2nd June** Garden Meeting at Melanie Gibbs: Hillesley

Visitors are always welcome at our meetings on the first Tuesday of the month, 7.30pm in the Village Hall.

**Please note**, Horton Hall in April only.

Betty Salthouse 01454 238410

### Friends of St Mary's

#### Forthcoming events:-

**May 6th** - FOSM Committee Meeting at Collyns Mead, 6.00pm

**June 19th** – Waterloo Ball at Westonbirt, 7pm.

**July 12th** – Jazz in the Afternoon 12 noon at Church Farm House

**July 19th** - AGM

**August 29th** – Pimms Tent at Hawkesbury Show

**November -**  
Another FOSM Tasting evening!  
Date tba

If you would like to become a member of the Friends of St Mary's and support the upkeep of the fabric of our beautiful church, then please contact **Pauline Setterfield on 01454-238307.**

[www.fosmhawkesbury.co.uk](http://www.fosmhawkesbury.co.uk)



### Sincere Condolences

On behalf of the Parish News team and our readers, sincere condolences to Louise, Greg, Ellie & Polly, and Richard on the sad passing of Bill.

Bill was such a lovely, quietly-thoughtful gent, always dapper and clutching his favourite pipe. He certainly settled so well into the village, even starring (reluctantly!) in a music video filmed at The Beaufort. He will be sadly missed, but very fondly remembered.

### HARESWOOD JOINERY

#### Specialising in...

- Bespoke kitchens and interiors
- Freestanding furniture
- Wooden flooring



**Philip Barr**

Phone: 07467072857 Email: hareswoodjoinery@yahoo.com

25 years experience



07766 952 697  
info@adbookkeepers.co.uk  
www.adbookkeepers.co.uk

Always putting off the accounts?

Too busy to sort your receipts?

Ideal for sole-traders or small businesses with high turnover.

# The Beaufort Arms

HIGH ST  
HAWKESBURY UPTON  
SOUTH GLOS GL9 1AU  
01454 2383217

## BEAUFORT BEER FESTIVAL

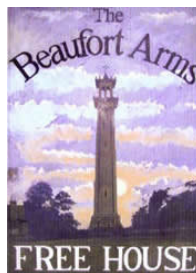
MAY 1<sup>ST</sup> – 3<sup>RD</sup>

CELEBRATING 20 YEARS  
IN THE GOOD BEER GUIDE

50P -A-PINT DISCOUNT FOR  
CARD-CARRYING BRISTOL  
AND GLOS CAMRA MEMBERS



FOR DETAILS GO ONLINE @  
[www.beaufortarms.com](http://www.beaufortarms.com)



### Beaufort News

News from the Beaufort this past month centres around our maintaining **5 Star Health and Hygiene rating** for the third time running (well done team, great recognition for all of your

hard work) and to our **cribbage team** for avoiding the wooden spoon when we got relegated this season.

Our crib season wasn't totally wasted this year however, star player **Jerry Herniman** won the Singles KO once again, even though he didn't really want to enter!

Plans for the **Beer Fest** are also coming on apace, **The Blue Notes Jazz Band** will be performing on our last day, Sunday afternoon, **3rd May** and we're also hoping to have entertainment on the Friday and Saturday nights –TBC.

On a more general note, and building on the great redecoration work Odd Job Barry is doing, we would like to **recruit an extra pair of hands**, someone with **Waiting and Bar experience**, not afraid to work weekends, who can meet and greet diners. Anyone interested, please get in touch.

Finally, many thanks to the Parish Mag team for continuing to do such a great job taking in last minute copy from badly organised people like me.

Kind regards,

**Big Nose Mark Steeds, the Publican's Publican**



Entries are now in for the 2015 Mitsubishi Motors Badminton Horse Trials which include 9 previous winners and riders from 12 nations.

Australia has its usual strong hand, headed by 2014 winner *Sam Griffiths*, 2010 champion *Paul Tapner* and 2006 winner *Andrew Hoy*. New Zealand will send no less than 16 riders including previous title holders *Mark Todd* and

### Badminton Horse Trials 2015

*Jonathan Paget* and of course the most successful non winner of all time, *Andrew Nicholson* who has entered both Nereo and three times Burghley winner Avebury. The British entry is lead by *William Fox Pitt* who hopes to ride Parklane Hawk and Chilli Morning, *Pippa Funnell*, *Mary King* and the last British winner here *Oliver Townend* with Armada, the 2014 runner up. *Zara Phillips* has entered High Kingdom as a precaution but hopes to take him for

her first visit to Kentucky the week before Badminton.

The Trials start with the Grassroots Championships on Wednesday 6th May, followed by 2 days of Dressage, Cross Country on Saturday 9th and Show Jumping on Sunday 10th. Italian course designer *Giuseppe Della Chiesa* has been hard at work on his track, which is reversed in direction from last year.

### MG COUNTRYSIDE DEVELOPMENT

Fencing, Tree Surgery, XC courses,  
Landscape Gardening, and Fire Wood

Miles Batten	07866486808
Giles Bleaken	07976562323
Website:	<a href="http://www.m-g.org.uk">www.m-g.org.uk</a>
Email:	<a href="mailto:miles@m-g.org.uk">miles@m-g.org.uk</a>

Based at Upper Chalkley Farm, Horton  
Other jobs available upon request



COUNTRY  
PROPERTY

[theauctioneer.biz](http://theauctioneer.biz)  
PROPERTY AUCTIONEERS

Nick Cragg FRICS FNAEA

01454 321339

Specialist Property  
Sales Lettings Consultancy  
South Gloucestershire

[www.countryproperty.co.uk](http://www.countryproperty.co.uk)

## WINLESS AT WINDY WHALEY

Hawkesbury CC began the 2015 season with a trip to Whaley Bridge in Derbyshire, to play a match in memory of Dave Beeley, a much-loved and greatly-missed member of our club. An 18-strong tour party travelled to the match to compete for the Dave Beeley Memorial Trophy, which was generously donated by his family.

### GETTING THERE

The tour did not get off to the best of starts. The M6 was closed, leaving several members of the team stranded and taking a stroll along the hard shoulder in what turned out to be a seven hour ordeal. The rest of the team, having set off in the mid-afternoon, ended up taking scenic detours through various towns of Staffordshire and Derbyshire. The hotel could not have been a more welcome sight to our weary travellers.

### THERE'S NO PLACE LIKE...

The Alma Lodge Hotel has some fantastic recommendations on tripadvisor, praising the 'great quality and staff', one review going so far as to say that it is 'possibly the cleanest hotel I have ever stayed at.' The Alma Lodge is at number 149 on the Buxton Road in Stockport: we were at number 177. Tripadvisor is not so generous to the Davenport Park, with reviewers posting 'This hotel is the worst I have ever visited' as well as 'should be demolished.' Each room was decorated as recently as 1985 and bore the nicotine stains of every unlucky resident to have lain awake in them in the middle of the night ever since, listening to the guttural glugging and groaning that resonates from the plumbing. The second floor intoxicated its guests with the overwhelming combination of Lynx deodorant, mildew and heavy armpits. The dirt was such that guests needed to clean themselves after they had had a shower. That said, it was cheap, so it was the perfect venue for a Hawkesbury cricket tour.

### A NIGHT OUT

The hotel staff recommended a local Italian restaurant to us. There we were joined remarkably by a stag party from Chipping Sodbury as well as a thirty-

strong hen party from the local M & S. Barry and Sue Wright, arriving late, received their pasta just moments before the speakers above our table began to throb to the sounds of Tragedy by Steps. Inspired by the entertainment, the younger members of the party left for a night out in Manchester leaving the elder statesmen to savour more 90s dance anthems.

### MATCH DAY

Richard Marshall, preparing for his first match since his three year spell on an island in the heart of the Indian Ocean, was up and out of his room at 6:30, sporting full running gear and ready to pound the rain-soaked pavements leading into the city. The rest were less energetic and when they eventually surfaced from their beds, we headed for Whaley Bridge, a beautiful small town nestled at the foot of the Western Peak District.

The cricket ground must surely rank among the most beautiful in the country, commanding views over Toddbrook Reservoir and the moorlands of High Peak. The ground was breath-taking, in more ways than one. We were spellbound by the dancing shadows of the clouds quick-stepping over the hilltops. We were also rendered breathless by a force 10 gale that swept across the car park. For this reason, many of the tour party were not spotted outside the pavilion all afternoon.

### HAWKESBURY'S INNINGS

While most of the team piled on as many jumpers as was humanly possible, Chris Gardener and Joss Beeley manfully strode out to bat in short-sleeved shirts. Perhaps it was the wind, or a burning desire to watch the Grand National at 4:15, but both were taking their pads off in the visitors' dressing-room promptly and were soon followed by Marshall and Dan Blackwell. Hawkesbury had collapsed to 10 for 4 and were looking set to watch the 1:15 at Aintree, never mind the 4:15. Jay Westwood, captaining the club for the first time this summer, staged a positive comeback. Together with Gavin Huxford, he took the team past fifty. Huxford, whose 91 was the highest

score by a first team player last summer, looked in encouraging form and Westwood's six, steered over the square-leg boundary, gave everyone hope of a big score. Sadly, it wasn't to be, but the innings was given fresh momentum by the new pairing of Tim Chancellor and Ben Cullen. Chancellor batted freely, whilst Cullen struck four 6s as we went past 100, closing finally on 131 all out.

### WHALEY BRIDGE'S REPLY

The Beeley brothers opened the bowling. Both Sam and Joss instantly found their line and length but their accuracy did not make the early break. That honour fell to "Unplaya" Bill Cullen, who extracted both bounce and turn to take a wicket with just his second ball.

Variety from Huxford helped restrict the batsmen, but, with one opener beginning to find form, runs began to flow. Fielding was challenging on a soft April outfield and Marshall managed to tweak his hamstring whilst over-stretching. He gamely continued, hobbling from one end to the other, proof - if ever there was any needed - that early morning runs are clearly bad for your health. Chancellor removed the danger man and, together with Ed Riddington, limited the run rate to set up an exciting final two overs. 21 was needed off the last 12 balls, but the short boundary beckoned the new batsman. I was needed off the last 6 balls and the game was over with five balls to spare.

A presentation of the trophy was made at the Shepherd's Arms, where speeches were made by the opposing captain - one of Dave's friends from his school days - and Bernie Evans. We were then all treated to a fantastic bowl of chilli, served from a metre-wide paella pan.

Whilst some remained at Whaley Bridge, others ended the day treating the locals to a rousing version of Cider Drinker at the karaoke at the Dog and Partridge.

It was a fantastic trip: the match was enjoyed by one and all and was a fitting way to remember a respected and much-missed member of our club. Thank you to Bernie and Anne for all their hard work in making it such a success.





# HAWKESBURY UPTON TENNIS CLUB



## NEW SEASON OFF TO A GOOD START

### Still seeking your support

We have enjoyed a few sunny Club Nights so far. All those involved have said how good it feels to be back on court in the early evenings after a hard day's work.

We invite you to join us, without obligation to become a member, to see if you would like to make it a more regular activity. No matter what your standard, there's no need to feel inhibited; we just play for fun. Details of times members meet up for Club Sessions are on Page 2.



### JUST COME ALONG AND HAVE SOME FUN!!

In last month's Newsletter we mentioned that **Hawkesbury School pupils have FREE membership**. It should be stressed that, for safety reasons, they **MUST** be accompanied by an adult [over 18yrs]. If the adult wishes to play and is not a member the adult guest fee of £2 applies – please use Honesty Box. Do encourage your children and their friends to play and please ask a Committee Member in advance if you need to borrow equipment.

### DID YOU MISS OPEN NIGHT?

We had a very sunny **OPEN EVENING** on Wednesday 15 April with a BBQ and drinks. Several potential new recruits came along and we are delighted to welcome them as members. All ages, from minis upwards were made welcome. If you missed it we'll be doing it again early in June so watch this space!

### DON'T BE SHY - JUST GIVE IT A TRY CALLING ALL MINI [U11yrs] TENNIS PLAYERS.....

We are delighted to announce that **ALL** children under 11 years of age, who live in the **Parish of Hawkesbury**, can play on the HUTC courts **FREE OF CHARGE**, providing they are accompanied by an adult [over 18yrs]. If the adult wishes to play and is not a member the adult guest fee of £2 applies – please use Honesty Box.

### How to join HUTC

Please ask a Committee Member for a Membership Form. [Contact details overleaf].

**Note to last season's Members - MEMBERSHIP RENEWALS ARE NOW DUE SO PLEASE SEND YOUR FEES AND FORM TO ROB OWEN** – see Page 2 for contact details to obtain a form or use the one printed in the Parish Magazine in April or print one off the HUTC website.

## Hawkesbury Upton Tennis Club Newsletter Page 2

### Elaine's Coaching Sessions

Elaine invites MEMBERS to contact her to arrange coaching sessions to suit you. These can be 1-2-1 or in groups.

From match play drills & technical help for those already keen players, to basic techniques for those with little or no experience. The course will be just what you need no matter what your age and ability.

Ring Elaine on 07725 165181 or email [elaineweightman@btinternet.com](mailto:elaineweightman@btinternet.com)

### Court Fees -

Members - FREE: Non Members - £6.00 per hour/per court at peak times, £3.00 ph/pc at off peak. [Peak - all day Sat & Sun + 6.00pm till dark on all week days, Adult guests playing with a Member - £2.00, Junior/Student/Over 65s - £1.00.

BOOKABLE IN ADVANCE USING NOTICE BOARD AT THE SIDE OF THE COURTS.

Would guests please use the honesty box?



### Male players needed for the Leagues?

We are looking for more male players to join our team and play in League matches. However, the majority of us just play to have fun and benefit from the exercise.

### NEW TO HUTC

#### JUNIOR CLUB NIGHTS

Junior Club Nights are aimed at those of SENIOR school age and we encourage you to come along and have a go.

Contact our Junior Representative, Ross Lawrence, or a Committee Member, if you'd like to attend a Junior session on Mondays 5.30 -6.30pm, so that we can make sure someone is there to welcome you and make sure you have the equipment you need. [NOTE TIME CHANGE FROM APRIL magazine]

Ross Lawrence - 07923 936179

[09rlawrence@klbschool.org.uk](mailto:09rlawrence@klbschool.org.uk)

### Club Sessions

MEMBERS WELCOME

TUESDAY 1.15-3.00pm - ALL

MONDAY 5.30-6.30pm - JUNIORS ONLY

MONDAY & WEDNESDAY - 6.30pm onwards - ALL  
Tuesday afternoon is for mixed abilities just for fun.  
Monday & Wednesday evenings are for mixed doubles of all abilities and a very sociable session. Monday Junior Club Nights are for school age players.

### Committee Contact Details

Howard Bradley - Chairman - 01454 238761  
[howard.bradley@dexam.co.uk](mailto:howard.bradley@dexam.co.uk)

Steve Berry - Vice Chairman - 01454 238273  
[steve@mountainkingdoms.com](mailto:steve@mountainkingdoms.com)

Barbara Stephens - Secretary - 01454 238569  
[benwf2@nasuwt.net](mailto:benwf2@nasuwt.net)

Jackie Huxford - Treasurer - 01454 238872  
[jackie@huxford.eclipse.co.uk](mailto:jackie@huxford.eclipse.co.uk)

Rob Owen - Membership Sec - 01454 238623  
[owen@barleym.freeseerve.co.uk](mailto:owen@barleym.freeseerve.co.uk)

Tricia Perris - Publicity Officer - 01454 294768  
[cb-honsec-glos@therfu.com](mailto:cb-honsec-glos@therfu.com)

Elaine Weightman - Club Coach - 07725 165181  
[elaine.weightman@homecall.co.uk](mailto:elaine.weightman@homecall.co.uk)

Ross Lawrence - Junior Rep - 07923 936179  
[09rlawrence@klbschool.org.uk](mailto:09rlawrence@klbschool.org.uk)



# HAWKESBURY UPTON TENNIS CLUB

**MEMBERSHIP FORM 1<sup>ST</sup> APRIL 2015 – 31<sup>ST</sup> MARCH 2016**

FULL NAME(S): .....

For Family/Junior membership CHILD'S NAME(s) & AGE(s): .....

ADDRESS: .....

Home Tel No: ..... e-mail: .....

Mobile Tel No: .....

Name & telephone number of Emergency Contact: .....

**MEMBERSHIP SUBSCRIPTIONS - Please CIRCLE membership required**

Family	Adult	Over 65s	Full-time Students & unemployed	Junior (under 18s)
£85	£47	£20	£20	£20

Court keys are available for a £15 deposit. If required please tick this box. •  
**FREE British Tennis Membership** giving opportunities for international tickets. Full benefits can be seen at [www.LTA.org.uk/membership](http://www.LTA.org.uk/membership) The Club applies on behalf of all its members. We need your permission for the Club to do this so please tick the box as it benefits the club to have membership. •

**Court Fees:**

Members – Free. Courts can be booked up to a week in advance using the notice board next to the Courts.  
 Non Members - £6.00 per hour per Court at peak, £3.00 per hour per Court at off peak.  
 Adult Guests playing with a Member £2.00, Junior/Student/Over 65s £1.00.  
 Peak = all day Saturday and Sunday + 6:00pm to dark on all week days.

**CLUB SESSIONS: Commence Monday 30 March 2015 ALL MEMBERS WELCOME**

SOCIAL TENNIS: Tuesday 1:15-3:00pm – for those available or working from home – ALL WELCOME  
 MIXED DOUBLES: Monday and Wednesday Evening 6:30pm till dark – ALL ABILITIES WELCOME with lots of mixing around and socialising  
 JUNIOR SESSIONS: Monday 5:00-6.30pm – school age players only

**Declaration**

**I agree to abide by the rules of the Tennis Club and the aims of its constitution and to pay all subscriptions, fees etc when due.**

**SIGNED:** .....

**Date:** .....

Please return this form to the Membership Secretary (cheques payable to Hawkesbury Upton Tennis Club)

**MEMBERSHIP SECRETARY**

Rob Owen, Barley Mow, France Lane, Hawkesbury Upton, GL9 1AN  
 Telephone: 01454 238623 email: [owen@barlevm.freeserve.co.uk](mailto:owen@barlevm.freeserve.co.uk)

**MARK POWELL**

DOUBLE GLAZING INSTALLATIONS & REPAIRS  
 WINDOWS - DOORS - CONSERVATORIES  
 SASH WINDOW REPLACEMENT SPECIALIST  
 MISTED UNITS, HANDLES & LOCKS REPLACED  
 LOCAL TRADESMAN  
 CALL MARK ON  
 01454 326804  
 MOBILE 07860 805197

**Hardwood Logs**

Dry, seasoned hardwood, barn stored.  
 Sold in dumpy bags  
 £60 per bag - 2 bags £110  
 Local free delivery




**Call Tom Cole**  
**Mobile:** 07970911412  
**Home:** 01454 238 896



Love live music? come and see..

# BlackStag

## Bank Holiday Sunday 30<sup>th</sup> August from 7pm

In the Hawkesbury Show Marquee

Tickets: £8 in advance or £10 on the door

All sold tickets will be entered into to a free prize draw

For tickets call or text Mel on 07788752689 or email stoner610@hotmail.com



All proceeds in aid of Hawkesbury preschool & Toddlers

## Wotton Bowls Club

*Dryleaze, Wotton-Under-Edge*

Spring is coming – we are looking for new members to come and enjoy the sport of BOWLS.

If you enjoy having fun and meeting new friends, then bowls may be the game for YOU.

Fancy ‘Giving it a go?’ then please join us on the first Saturday morning of every month from the start of May, 10.30am – 12.30pm

For more information please ring Dennis (01454 887172) or Ray (01453 521132)



JOHN H WALKER

**GARDEN SOLUTIONS**

Garden makeovers. lawn cutting and Maintenance, Turfing, Patios, Ponds, Water features, Decking, Hedge Cutting Fencing, All shrub work, Clearing, Driveways, & Planting.

All aspects of garden work undertaken

*TAKING NEW BOOKINGS FOR THE LAWN MOWING 2015 SEASON NOW. CONTRACT BASIS OR ONE OFF.*

LANDSCAPING & GARDEN MAINTENANCE EST. 1999

TEL: 01454238865  
MOBILE: 07974933398

To advertise your company or services in the Hawkesbury Parish News,

email us at :

[parishnewsads@hawkesburyupton.com](mailto:parishnewsads@hawkesburyupton.com)

and reach a wide local audience.

## High Speed Hawkesbury

With my diary madly busy in April, the arrival of superfast broadband in our household was perfectly timed.

I work from home and spend a large part of every day online, and can assure you that the difference between a screen loading instantly and slowly, many times each day, can make a significant difference to one's productivity, and not just because of the extra seconds required for every transaction.

I reckon that working with a slow connection also makes your brain slow down. It's similar, but opposite to the effect of playing quickfire computer games, which affect at your reaction times like a double espresso. In the same way, going on the dodgems makes you drive more recklessly the next time you get into your car. (Or is that just me?)

I crowed about the arrival of our new superfast service to city-living friends to whom high speed broadband is old hat.

"No more sitting around waiting for files to download! No more giving up on videoconference meetings because the connection cuts out! My productivity is going to soar!"

One urban American Facebook remarked on his astonishment at the difference between our countries' cultures, as if I'd announced that Britain had just discovered the steam engine. Cynical replies trickled back. "So, no more waiting around for those cat videos to download." "Yep, all-you-can-watch iPlayer TV. I've never known anyone to get more done as the result of installing superfast broadband connection."

Ah, but at least I can be less productive at higher speeds now.

*Big thanks to Steve Webb, Sue Hope and all who campaigned to bring this aspect of Hawkesbury Life into the 21st century.*

*Debbie Young*

[www.authordebbieyoung.com](http://www.authordebbieyoung.com)

## ART IN A COUNTRY CHURCH St Mary the Virgin Hawkesbury

16<sup>th</sup> May 2015

An opportunity to sketch or paint  
Inspired by the magnificent church architecture  
and surrounding picturesque countryside

The availability to observe a demonstration  
given by a Water Colour Artist  
and to take part in a workshop  
on simple colourful  
Art Craft

The cost for the day will include  
Coffee & Biscuits on arrival  
Soup & ploughman's Lunch in the Malthouse  
Tea in the afternoon

Cost for the day £20.00

There may also be cards and paintings  
to purchase

To make a reservation please contact  
Mary Beresford on 01454 238508  
Or Linda Fairney on 01454 238553

### Fancy a break in North Cornwall.....?

Our apartment is adjacent to the North Cornish coastal path, with access to stunning beaches. With 2 bedrooms/bathrooms, it is our special retreat and has all the comforts of home.

For rental details, please contact Chris on 01454 232927 or email [chrissav5@yahoo.co.uk](mailto:chrissav5@yahoo.co.uk).

### EEZEEFLOW

#### DRAIN CLEARANCE

Drainage problems – private and domestic

NO JOB TOO SMALL  
Regional Coverage

CENTRAL OFFICE  
PHONE: 01454 238200  
FREEPHONE: 0800 3893037  
FAX: 01454 238713

To advertise your company  
or services in the  
Hawkesbury Parish News,  
email us at :

[parishnewsads@  
hawkesburyupton.com](mailto:parishnewsads@hawkesburyupton.com) and  
reach a wide local audience.



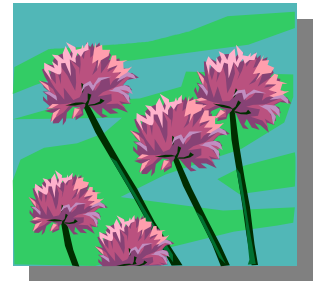
**HAWKESBURY GARDENING CLUB**  
[www.hawkesbury-gardening-club.org.uk](http://www.hawkesbury-gardening-club.org.uk)

# **ANNUAL PLANT & PRODUCE SALE**

**in Hawkesbury Village Hall**

**Saturday 16<sup>th</sup> May 10am-12noon**

**Big selection of plants to buy – perennials, annuals, vegetables & more**



**Cakes, produce and preserves**



**Refreshments available**



**Free Entrance**

If you would like a table to sell plants/ produce please contact  
 Terry Truebody - 01454 238364  
 or Pat Sherry - 01454 238791

**T. F. BLEAKEN CARPENTRY & BUILDING CONTRACTOR**  
 FIRST & SECOND FIX CARPENTRY  
 BESPOKE JOINERY  
 TRADITIONALLY CUT ROOFS  
 FITTED CABINERY  
 BESPOKE KITCHENS & BATHROOMS  
 RESTORATIONS & RENOVATIONS  
 BUILDING EXTENSIONS & CONVERSIONS

IF YOU HAVE ANY QUESTIONS OR WOULD LIKE A QUOTATION FOR YOUR POTENTIAL CARPENTRY OR BUILDING PROJECTS, PLEASE DO NOT HESITATE TO CONTACT ME.

KIND REGARDS  
**THOMAS FREDERICK BLEAKEN**  
 TELEPHONE: 07885838922 E-MAIL: [t.f.bleaken@hotmail.co.uk](mailto:t.f.bleaken@hotmail.co.uk)



**BonneFreshClean**  
 Carpet & Upholstery Cleaning Specialists

Call for a free, no obligation quote today!

**Love the look and smell of clean and fresh carpets and upholstery?**

- Thorough deep cleaning, no residues
- Child and pet friendly treatments
- All-female team ensures special attention to detail and superb results
- Fully qualified and insured

Bonne Fresh Clean brings to you a professional carpet and upholstery service that will leave them sparkling and fresh.

VISA MASTERCARD AMEX V NCCA ASSOCIATE MEMBER 2014

Bonne Fresh – Relax and enjoy beautifully clean and fresh carpets and upholstery!

T: 01454 436001 M: 07774 908410  
 W: [www.bonnefreshclean.co.uk](http://www.bonnefreshclean.co.uk)  
 44 Townsend Lane, Almondsbury, Bristol, BS32 4EQ



**May Services in Badminton Benefice**

<b>Sundays</b>	<b>3rd May</b>	<b>10th May</b>	<b>17th May</b>	<b>24th May</b>	<b>31st May</b>
<b>Readings</b>	5th Sun of Easter	6th Sun of Easter	Sun after Ascension	Pentecost	Trinity Sun
	1 John 4.7-end  John 15.1-8	John 15.9-17	Ezekiel 36.24-28  John 17.6-19	Acts 2.1-21 Jn 15.26,27: 16.4-15	Romans 8.12-17  John 3.1-17
Great Badminton St Michael		1000 MATINS Bishop of Tewksbry			Today is the 5th Sunday of the month. We hold one service for all the churches. Please bring a picnic if you wish. You can find Oldbury on the hill, by driving to Didmarton and turning off towards Oldbury.
Little Badminton St Michael		HORSE TRIALS SERVICE.		1115 Matins+ HC Richard Thomson	
Sopworth St Mary	6pm Evensong  Richard Thomson	IF dry, park in field next to church drive.	1115 Matins  Richard Thomson		
Didmarton St Lawrence	1115 Matins Richard Thomson	If wet, by the village hall.	8.30 BCP HC Richard Thomson		
Acton Turville St Mary		If you wish to see the showground, then pay and park in the main car parks and walk down through	9.45 Matins Richard Thomson	8.30am BCP HC Alveen Thoresen	
Boxwell St Mary		the arches telling stewards that you are going to church.			
Leighterton St Andrew	8.30am HC BCP Alveen Thoresen		1100 Matins Julian Wilson	6pm SAT EVE Richard Thomson	
Hawkesbury St Mary's	9.45 CW Sung Euch Richard Thomson		9.45 Fam + Btm serv AT and MB	6pm BCP HC Alveen Thoresen	
Lasborough St Mary	9.30am Matins Alveen Thoresen		9.30am Matins Churchwarden	9.30am CW HC Richard Thomson	
Oldbury-on-the- Hill St Arild					

**HAWKESBURY UPTON LITERATURE FESTIVAL**

The deadline for this month’s Parish News fell before the LitFest took place (23<sup>rd</sup> April), so it’s too early to report on how it went. I’ll give a full account in the June issue, but this month I just wanted to say some thank yous:

- to the Hawkesbury Writers for having faith in the event from its inception and for providing the seedcorn funding of £100 to allow us to hire a venue to make it happen
- to Aggie and Giuseppe at The Fox for being so supportive, despite it being an unknown quantity, and for their practical experience and expertise in event management
- to the Village Hall Committee for lending us extra chairs
- to the team of volunteers who stepped in to help me with the practicalities: Sara Couzins-Short, Sara Musty, Heidi Perry and Tamsin Warner - all busy people (well, you know what they say...)
- finally, to the Parish News team, for running our articles to spread the word

It is the energy, enthusiasm and generosity of people like this that make this village such a vibrant community and such a desirable place to live. I’ve been here for nearly a quarter of a century now, and I wouldn’t want to live anywhere else. Thank you.

**Debbie Young**

## Letter from the Vicar — May 2015

Dear all,

Once again the Badminton Horse Trials Championships are almost upon us.

The Bishop of Tewkesbury, (Rt. Rev. Martyn Snow) will be preaching at the service on the Sunday at 10am.

**If weather is fine, we will be parking our cars in the field to the right of the drive leading up to the church. If ground is wet, then parking will be at the Village hall. Cars must not be left in the field/village hall after the Service therefore anyone wishing to spend some time on the Show ground should park in main car parks and buy a ticket and walk down to the Church approaching via the Archway to the right of Badminton House.'**

We are also doing the 'Chapel' again as last year, this was a great success. We are planning to run it from 1030 - 4.30, Thursday to Saturday, and then 1230-3.30 on Sunday. You can find 'The Chapel' marquee next to the Media and TV area, and next to the 'Lost people! It is on the back thoroughfare.

We will have short acts of prayer around 11am, 1230 and 3.30pm which I will advertise and people can attend. Coffee and tea will be available all day for free, (Donations welcome). And a friendly face ready to greet you.

The reason we are doing this is that Christians have a duty to share their faith and remind people of Jesus. St Francis said 'preach the faith, and if you must, use words!'

Offering refreshment and friendship is a reminder that God loves everyone. No matter what we bring, there is a cup of coffee or tea for anyone who needs to sit down for a moment and catch their breath. Or indeed for anyone who wishes to talk about God, life or horses!

Best wishes,

Richard

Please Contact me for arranging Christenings, weddings or Confirmation.

Email: [r.thomson@live.co.uk](mailto:r.thomson@live.co.uk) or Tel. 01454 219236

Benefice website [www.badmintonchurch.org.uk/](http://www.badmintonchurch.org.uk/)



**Fascinating Rhythm**  
**The Musical!**  
 Celebrating our  
 20<sup>th</sup> Anniversary

with  
 Special  
 Guests  
**Junior FR**

in association with  
**LOVES BET PRODUCTIONS**

**Saturday 27th June 2015**  
**Olympus Theatre,**  
 Wise Campus, New Road, Stoke Gifford, BS34 8LP

2.30pm Matinee - tickets £10, Seniors and under 14's £5  
 7.30pm Evening £10 all tickets

Tickets go on sale 8th April 2015  
 Please visit [www.fascinating-rhythm.com](http://www.fascinating-rhythm.com) to purchase your  
 tickets from our box office or call 07719368701

**Expect the Unexpected!**

### MESSAGE FOR ALL DOG WALKERS ON THE PARISH HALL RECREATION FIELD

We have received a number of complaints that dog walkers continue to leave dog faeces on the Recreation Field at the Parish Hall. This poses not only an issue for those playing on the field but it is also a significant health risk. As such the Management Committee cannot allow it to continue. If dog walkers do not act responsibly then steps will have to be taken to ban dogs from the field. This is not something that we would want to do as many of us are also dog walkers and appreciate the importance of having the family pet with you on recreational outings.

Therefore we urge dog walkers to carry plastic bags to collect the faeces and dispose of them in the bins provided. Thank you

**From the Parish Hall Management Committee**

### Sherston Market dates for spring 2015

Saturdays 10 am to 2pm,  
 9th May  
 6th Jun  
 4th Jul

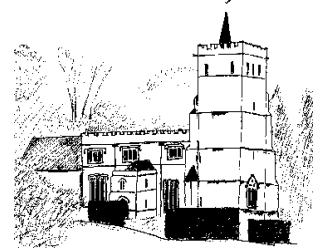
Stallholder enquiries can be made  
 by PM or email to [info@awkwardsquad.co.uk](mailto:info@awkwardsquad.co.uk)

<http://www.sherstonmarket.co.uk/>

## St Mary's Church News

Churchwardens Mrs Linda Fairney 238553 & Mrs Mary Davies 238657  
Keys for cleaners/flowers/church sitters please contact Mary Davies 238657  
if possible the day before to arrange for collection.

*"And we know that in all things God works for the good of those who love him, who have been called according to his purpose."* Romans 8 : 28



Easter comes and goes a little more slowly than Christmas, because we commemorate more events surrounding the death and resurrection of Jesus: the Last Supper on Maundy Thursday, his trial and execution on Good Friday, and his resurrection on Easter Day. This year was no exception. The Last Supper was remembered in a service and vigil at Leighterton, followed on Good Friday by a time of reflection at St Mary's, and a brief act of worship beneath the cross on the hill opposite. This was well attended, though a sombre occasion, reinforced by rain most of the morning. Easter Day dawned fair and bright, and we enjoyed a good congregation for our celebration at St Mary's

Last Sunday we were glad to welcome Benjamin and his family for his baptism, accompanied by a good many other children who were as quiet as mice, but who added to the general atmosphere of joy

At the Annual Parochial Church Meeting, also last Sunday, after Evensong, Mary Davies and Linda Fairney were re-elected as Church Wardens, while Betty Salthouse retired as Secretary. Her role has been taken over by Sally McFadyen

There will be NO service at St Mary's on 10 May, because of Badminton, but there will be a service at Greater Badminton with Bishop Martyn

Finally, here is a wedding alert for flower arrangers. Among many forthcoming weddings at St Mary's, there are two in May, on the 23rd and 30th. We will continue to give you advance warning every month for the rest of the year

### **Dates for your diary**

31 May – 11.15 am - Oldbury-on-the-Hill – bring a picnic!

Jennifer Oldershaw

## THE HAWKESBURY SHOP



HIGH STREET, HAWKESBURY UPTON,  
TEL. 01454 238639  
Email: [anneweston@interwales.com](mailto:anneweston@interwales.com)  
Facebook: <https://www.facebook.com/TheHawkesburyShop>



Springtime is finally here, clocks gone forward and sunshine coming back!

I hope you had a very HAPPY EASTER.

We have a few new things in the shop being made for us by Hawkesbury villagers – jewellery, glassware, small bags. It is always nice to help out small local initiatives – come and take a look.

Italian wine offer is running through April/May –  
2 bottles for only £9.50!

There have also been quite a few new people moved into the village, a big welcome to our lovely village and it is so nice to see you supporting us in the Hawkesbury shop already.

As usual, all our delicious products, chickens, bacon, sausages and all our deli goods including selection of cheeses. Our fresh curry sauces, tracklements pickles/chutneys, kitchen garden jams will be out on sale for you.

Dry cleaning available, amazingly reasonable prices – drop in before Tuesday – pick up Friday and vice versa. Can't get more efficient than that!



# BETHESDA CHAPEL

PARK STREET, HAWKESBURY UPTON

## Services for the month of MAY 2015



Sunday May 3 <sup>rd</sup>	10.30am	Rev Philip Hopes [C]
Sunday May 10 <sup>th</sup>	10.30am	Mr Alan Tarling
Sunday May 17 <sup>th</sup>	10.30am	Mr Mark Hearsom
Sunday May 24 <sup>th</sup>	10.30am	Mr Peter Belcher
Sunday May 31 <sup>st</sup>	10.30am	<b>FAMILY SERVICE</b> Speaker: Rev. Philip Hopes
	6.00pm	The Bristol Male Voice Choir <i>Please come and enjoy a wonderful evening of song</i>



Tuesday 5<sup>th</sup> May at 7.30pm: **A time of worship/prayer**

Other Tuesdays at 7.30pm: **Bible study/prayer**

Thursdays at 2.00pm: **A time of prayer for revival**



A Russian teenager, living in Paris around 1930, was aggressively anti-Christian and hated everything to do with God. After listening unwillingly to a talk by a Priest, he decided to read the gospel to check whether the priest's picture of Christianity – which the young man found repulsive – was supported by the gospel account! Not to waste time, he chose to read Mark, the shortest gospel. Before he reached the third chapter, he was suddenly aware that on the other side of his desk stood the risen Jesus! His hostility crumbled and he became a disciple of Christ. He became Metropolitan Anthony, the Russian Orthodox Archbishop in London.

The Bible says: *“ALL scripture is God-breathed and is useful for teaching, rebuking, correcting and training in righteousness, so that the servant of God may be thoroughly equipped for every good work”* 2 Tim 3:16-17 NIV

M.C. Coates (Chapel Secretary)

# THE METHODIST CHURCH

BACK STREET, HAWKESBURY UPTON



## Services for May 2015

Sunday 3 <sup>rd</sup> May	9.45am	Morning Praise at St Marys
Sunday 10 <sup>th</sup> May	10.00 am	Rev Hilary Cooke <i>Holy Communion</i>
Sunday 17 <sup>th</sup> May	9.45am	Morning Praise at St. Mary's
Sunday 24 <sup>th</sup> May	10.00am	Rev Debra Chidakwa
Sunday 31 <sup>st</sup> May	10.00 am	Mr J Creech



**TRADITIONAL STONEMWORK & POINTING SPECIALIST**

- Dry Stone Walling
- Brickwork & Blockwork
- Block Paving
- General Building
- Stone Tiling

**STEVE GREEN**  
01454 238454 (after 5pm)  
Mobile: 07813 245550

Chimney Sweep  
Steve Thompson  
07974 194012  
01454 232941



Member of the Institute of Chimney Sweeps.

To advertise your company or services in the Hawkesbury Parish News, email us at :  
**parishnewsads@hawkesburyupton.com** and reach a wide local audience.

## SOUTH GLOUCESTERSHIRE COUNCILLOR'S REPORT

### AT LAST SUPERFAST BROADBAND ARRIVES!

There is some good news and some really good news! South Gloucestershire Council has been awarded funds to investigate what community and public transport services are required in rural areas to access health services- The Total Transport Fund. Officers have the contact details of Hawkesbury Volunteer Transport, but if you have further information you would like to share please get in touch.

### GREAT NEWS:

At last Superfast Broadband has arrived, with many people already signed up and receiving a much faster connection. I have already received very positive comments, from families about this. I am aware that some providers are less than enthusiastic; however I understand these problems can be resolved. Please contact your provider for full information.

### Housing Revenue Grant

Some village organisations have

responded to my email and funds have been agreed for the Youth Club, Drama Club, HU5K(PTA) and the Village Hall.

I attended **the Healthwatch, South Gloucestershire** open meeting; Healthwatch has been set up to reflect the views of the community on health and social care matters. They are looking for volunteers and can provide training to bring about real and positive change, including being trained for "Enter and View" to both hospitals and care homes. Contact 0117 9589363 for further details.

[Volunteering@thecareforum.org.uk](mailto:Volunteering@thecareforum.org.uk)

**The Commons** – Further work on scrub clearance has been going ahead, and very informative."A Commons Matters" newsletter is shortly to be available.

Just in case you were wondering: South Glos Council were awarded a grant through the Autism Innovation Fund to run an Autism Awareness Project with

the Mobile Library Service. Volunteers, with a supervisor, accompanied the Mobile Library, on each of the 10 routes over the next couple of months to raise awareness of autism.

The first day took place on Monday – and the team has reported that the day started off slowly but did gather some momentum. They were pleased with the number of people they spoke to, especially as the publicity for this first day was probably limited. For further information, contact [www.southglos.gov.uk](http://www.southglos.gov.uk)

May I take the opportunity of thanking the clerk, councillors and residents for sharing their concerns and for their help over the past four years, and who knows what will happen on May 7th, but I do hope I will be working with you in a positive and fruitful way in the future for the benefit of the parish.

Cllr Sue Hope 01454 238673  
[sue.hope@southglos.gov.uk](mailto:sue.hope@southglos.gov.uk)

### Severn View Cattery

Since our item about the farm shop closing we have been inundated with questions about the cattery. I am pleased to confirm that it is business as usual in there and we are looking forward to a bumper summer. Bookings are already looking strong so do let us know if you are likely to need us as soon as you can. We tend to get really busy from about mid-July through until mid-September so if your holiday is within this time then give us a call (01454 299471) as soon as you can.

Meanwhile, the farm shop will be open for the last time on **Saturday 2<sup>nd</sup> May**. We have plenty of lamb and a significant quantity of pork salami. The salamis are brilliant for adding to pizza, salad, stir fry, pasta, etc. They are ready to eat once thawed and can be sliced within minutes of taking them from the freezer. They come in packs of four small salamis and are a snip at £4.00 per pack. Three flavours are available – chorizo, pork and fennel, and simply pork. They are the made from our own organic pork and are gluten free.

Pauline Dixon Tel: 01454 299236 [pcdixon@waitrose.com](mailto:pcdixon@waitrose.com)

### JOHN DAY ENGINEERING



All types of mowers serviced & repaired  
Free local collection & delivery

All fabrication & wrought iron work undertaken  
Gates, fencing, lighting etc.

**Please tel: 01454 238365 or 07947 636308**

### ***Ride On Cycles***

**The Mobile Cycle Workshop That Comes to You**

Full range of servicing & repairs carried out by a City & Guilds qualified mechanic, collection & return service also available.

Have your bike service now so it's ready for the good weather & avoid the last minute rush.

Contact Andy on:  
01454 880872 / 07443333219  
[andy@ride-on-cycles.co.uk](mailto:andy@ride-on-cycles.co.uk)  
[www.ride-on-cycles.co.uk](http://www.ride-on-cycles.co.uk)



## Hawkesbury Parish Council

### Planing Applications Received:

App. No.	Address	Description	Comments
<b>PK15/0786/PN1</b>	Existing Telecommunications Installation At Starveall Farm Beech Lane Hawkesbury Upton	Prior Notification for intention of replacement of 2 no. antennas, addition of 3 no. 600mm diameter dishes, replace 1 no. equipment cabinet, addition of 1 no. new cabinet and ancillary development.	<b>No objection</b>
<b>PK15/0418/LB</b>	The Stable Yard Stroud Road Hawkesbury Upton	Internal and external alterations to install a metal flue to support the use of a wood burning stove	<b>No objection</b>
<b>Appeal against refusal of Planning permission-there is no opportunity for the Parish Council to submit further comments</b>			
<b>APP/P0119/D/15/3005508</b>	Severn View Farm Inglestone Common Badminton	Demolition of 2no. outbuildings and erection of a replacement outbuilding to form indoor swimming pool, WC, plant room and changing facilities	

### **Allotments — Birgace Road**

Hawkesbury is very fortunate to have 23 allotments in its Parish, and over the recent years there have been in excess of 10 people waiting for a vacancy. At the time of going to print there is now no one waiting for an Allotment?

If you fancy growing produce to show at the “Annual Hawkesbury Horticultural Show” in August, or grow sufficient vegetables/fruit to sustain your family’s needs, this could be the time to apply for an allotment.

The rent is low in comparison to other Parishes;

If you have any questions or would like the opportunity to join the waiting list please contact the Parish Clerk by email or telephone with your details.

### **Annual Big Spring Clean Event**



The Parish Council would like to take this opportunity to say a “Big Thank you” to all the volunteers for giving up their time and energy supporting this event held on Sunday 22<sup>nd</sup> March 2015; It was very much appreciated.

**Lyn Allen**

**A Big Thank you**

The Parish Council would like to say a big Thank you to Lyn Allen for all her hard work keeping the bus shelter and war memorial clean over the past ten years. Lyn has done this out of the kindness of her heart; not for payment (except for a new dust pan and brush now and again). Lyn on behalf of the Parish Councillor and everyone we would like you to know how much everyone has appreciated all her hard work you will be missed.

**Thank you**



## Hawkesbury Parish Council (continued)

### Parish Council Annual General Meeting

#### (Please note the change of venue)

The next Parish Council meeting is being held on Monday 18<sup>th</sup> May 2015 at the **Methodist Hall Back Street** Hawkesbury Upton at 7.30pm.

#### Contact details for Hawkesbury Parish Council via:

Hazel Jones  
Parish Clerk  
2 Fox Close  
Hawkesbury Upton  
GL9 1EQ  
Tele: 01454 238074 [parishcouncil@hawkesburyupton.com](mailto:parishcouncil@hawkesburyupton.com)

### Under the Edge Arts

Under the Edge Arts (UTEA) is a volunteer-run community arts centre offering a wide range of arts classes, events and activities including regular live music performances. Tickets can be booked online, or by contacting us on 07791 323869.

Venue: The Chipping Hall, Wotton-under-Edge, GL12 7AD

The UTEA Spring 2015 programme is in full swing, it is crammed with performances and art, dance, music, craft and drama classes.

email: [info@utea.org.uk](mailto:info@utea.org.uk) phone: 07791 323869 Website and Online booking at [www.utea.org.uk](http://www.utea.org.uk)

#### May Events:

##### **Saturday 9th May, 8pm - Louise Jordan**

Fusing award-winning acoustic songwriting with classical influences and a folk sensibility, Louise accompanies herself on piano and guitar to play original works and musical settings of literature as well as her own unique arrangements of traditional material.

[www.louisejordan.co.uk](http://www.louisejordan.co.uk). Tickets cost £8/£6.

##### **Saturday 16th May, 8pm - Visions**

A live music and video spectacle performed by international keyboardist and composer Tor Underseth. Classic silent film excerpts combine with contrasting and brilliant animated sound to light projections, to create an explosive musical and visual attack on the senses. Tickets cost £8/£6.

##### **Sunday 17th May, 8pm - Ken Cox - a Conversation**

An evening with Margot Gibbs in conversation with Rob Collins. Margot is the daughter of Wotton artist Kenelm Cox, whose work is to feature in a major exhibition in London in May. This extraordinary collection of work caused quite a stir at UTEA seven years ago

when it was exhibited for the first time since his death in 1968. Margot and Rob will discuss Ken's life and family here in Wotton, the forthcoming exhibition and the contribution of his work to the development of art in Britain. Entrance costs £4.

##### **Thursday 21st May, 7.30am - Ken Cox Exhibition & Tate Britain Trip**

Depart 7.30am from the Chipping Car Park. A coach trip to visit an exhibition of work by Wotton artist Ken Cox first seen here at UTEA in 2008 and now showing at the Chelsea Art Space next to Tate Britain in London. You'll have plenty of time to visit the exhibition and the Tate or else have a day out in London. To book please call 07791 323869 or email [info@utea.org.uk](mailto:info@utea.org.uk). Return coach ticket £24.

##### **Saturday 23rd May, 8pm - Gavin Davenport**

Gavin Davenport has in a few short years become "a major rising star of the folk scene" (R2 Magazine). His bold, distinctive vocals, multi-instrumental skills wrapped around a unique, percussive guitar style and a knack for of the oral tradition with a modern relevance and an incisive eye for detail.

[www.gavindavenport.com](http://www.gavindavenport.com). Tickets cost £9/£7.

##### **Saturday 30th May, 8pm -The FB Pocket Orchestra**

The FB Pocket Orchestra transports their audience back to the hot jazz, blues, ragtime and popular dances of the 1920/30s & earlier. "Atmospheric, yet vibrant, this charming collection of songs will make you wish you had been born some 100 years ago. The style, glamour and 'fabulousness' of this era is captured beautifully" Jazz FM

[www.fbpacketorchestra.co.uk](http://www.fbpacketorchestra.co.uk). Tickets cost £8/£6.

#### June Events:

##### **Saturday 6th June, 8pm - Mizizi**

Founded upon the love of roots reggae, Mizizi provide all the ingredients of 'old school' reggae whilst performing new songs and revived reggae classics. Formed in the UK with roots as far afield as The Caribbean, Germany, Poland and Hungary; vocalists, horn section, keyboards, guitars, bass and drums combine with occasional guests to form a powerful, partying, ten-piece outfit: a reggae force not to be missed. [www.facebook.com/mizizireggae](https://www.facebook.com/mizizireggae). Tickets cost £9/£7.

# BADMINTON HOUSE OPEN GARDENS

*Badminton, Gloucestershire GL9 1DB*



**SUNDAY 21st JUNE**  
10.00am – 5.00pm

Entrance £5.00  
Children under 16 FREE

*Come and stroll in the Private Gardens of the historic Badminton House, the home of The Duke and Duchess of Beaufort. A map and plant list of the stunning Walled and South garden is included with your entry.*

*Purchase your own plants from Badminton House and invited stallholders.*

*Refreshments served all day by The Ship Inn*

[www.badmintonestate.co.uk](http://www.badmintonestate.co.uk)

Saturday 13th June 2015, 7.30pm

## An Evening With Tom Hart-Dyke

Chipping Sodbury Town Hall

From captivity to a castle.

Story of Tom's adventures and World garden.

Tickets £8 from Festival ticket outlets : The Post Office,  
Horse Street and Out of the Blue, 55 Broad Street

[www.chippingsodburyfestival.co.uk](http://www.chippingsodburyfestival.co.uk)

Email: info @chippingsodburyfestival.co.uk

## Westonbirt — 2015 Summer Concerts

*Full line-up*

### Paloma Faith

Friday 19 June:

Tickets cost £38.50  
(plus £3.85 per ticket booking fee)

### Tom Odell (with special guest Rae Morris )

Saturday 20 June:

Tickets cost £34.50  
(plus £3.45 per ticket booking fee)

### The Vamps (plus guests)

Sunday 21 June

Tickets cost £32.50  
(plus £3.25 per ticket booking fee)

### Robert Plant

Friday 10 July

Tickets cost £48.50  
(plus £4.85 per ticket booking fee).

### Spandau Ballet

Saturday 11 July

Tickets cost £46.50 (plus £4.65 per ticket  
booking fee) .

### McBusted

Saturday 12 July

Tickets cost £41.50 (plus £4.15 per ticket  
booking fee). No other fees apply.

Tickets available online from  
the Forestry Commission Box Office  
or call 03000 680400.



*The Latin-inspired, easy-to-follow,  
calorie-burning, dance fitness-party™.  
Feel the music and let loose!!!*

Monday 6.30 - 7.15 pm—*The Club Room,  
Gloucester Street, Wotton*

Tuesday 6.30 - 7.15 pm—*Horton & Little Sodbury  
Village Hall, Horton*

Thursday 6.30 - 7.15pm—*Charfield Memorial Hall, Charfield*

For more details contact:-

Andrea on 07970125353 or [andrea.benson1@btinternet.com](mailto:andrea.benson1@btinternet.com)



**Ladies!!** *Do you want to improve your posture,  
strength, mobility and stamina?*

**Then Join a Fitness League Exercise Class!**

Monday 7.30 - 8.45 pm—*The Club Room,  
Gloucester Street, Wotton*

Wednesday 6.45 - 8.00 pm—*Almondsbury Sport &  
Social Centre, Almondsbury*

For more details contact:-

Andrea on 07970125353 or [andrea.benson1@btinternet.com](mailto:andrea.benson1@btinternet.com)

**Tetbury Woolsack Races starting at 10am  
25 May 2015**

It is thought that the races originated in the 17th Century by young drovers showing off to local women by running up the hill carrying a woolsack. An official race day has been going for over 30 years now with world records entered in the 'Guinness book of Records'. The course is 280 yards long up and down a hill which has a 1 in 4 gradient, so the men's record of 3.5 minutes is no mean feat!  
The [Woolsack Races](http://www.tetburywoolsack.co.uk) form the central attraction of a fund-raising day, with all-day street market, charity auction, village fete, street entertainers, marching bands and more entertainment for all the family.  
For more info: [www.tetburywoolsack.co.uk](http://www.tetburywoolsack.co.uk)

**Charity shop items required for Mercy in Action who support ongoing work in The Philippines such as Orphanages, street children and house building for poor families.**

**Any donations can be dropped off at 14 Hunters Mead or tel Pam & Mike Bendry on 238773. Thank you.**



**Don't get let down  
by your oil supplier  
on delivery or price**

Call Sodbury Fuels on 01454 315050  
or visit [www.sodburyfuels.co.uk](http://www.sodburyfuels.co.uk)



**Holiday home for rent in  
Jumilhac le Grand, Dordogne, France**

La Maison au Coin is a well-equipped spacious country house with private pool and enclosed garden. Central village location close to all village amenities, historic château, deer park, the river Isle and beautiful countryside. Sleeps 8-10. Ideal for two families sharing or groups of adults.

There is plenty to do and something for everyone: canoeing, walking, fishing, trim trail through the woods, panning for gold, rock climbing, tennis, horse riding, cycling, 'acrobois', wakeboarding! A wide range of activities and amenities are available right on the door step and the local bar, restaurant and boulangerie are only 2 minutes' walk away! For more information, availability and prices please visit the website or our Facebook page: <http://www.ownersdirect.co.uk/accommodation/p8122872>, <https://www.facebook.com/lamaisonaucoin/info>, or 'phone Jane on 07790 888321.

**2 Men Went To Mow  
Garden and Tree Service**



Local Friendly and Reliable  
**Tree Surgery (NPTC Qualified)**  
All Types of Tree Work undertaken  
Contract Grass Cutting  
All Aspects of Garden Maintenance  
Planting Beds and Borders Maintained  
Shrubs and Plants Supplied  
Pruning and Hedge Trimming  
Garden Rubbish Removal  
References Available  
Free Estimates  
Fully Insured

Tel 07956 311901  
07557 365661  
Email [kev@2menwenttomow.co.uk](mailto:kev@2menwenttomow.co.uk)

**Beautifully restored 18th century farmhouse,  
Hautefort, Dordogne France**

Available to let all year round. A very attractive and sympathetically restored former farmhouse. Sleeps 10/12 in 5 Ensuite bedrooms, generous living accommodation & private heated pool. Fully equipped to a high modern standard whilst retaining a wealth of original features. Set in the heart of the quiet hamlet of Lachaud surrounded by glorious open countryside but less than 10 minutes drive from local shops & restaurants. You'll be perfectly placed to explore this beautiful & historic area or just relax, unwind & indulge yourself!

Pets with responsible owners are most welcome!  
For more pictures & further details visit:  
<http://www.ownersdirect.co.uk/france/FR19942.htm>  
Email: [bleaksandsal@hotmail.com](mailto:bleaksandsal@hotmail.com) or Tel: 07510516050 or 01454 238316



...punctuality, pride, courtesy, and quality all come as standard...

- Range and AGA specialist
- Ovens and hobs
- Extractor hoods
- Traditional stoves
- Microwave ovens



**the UK's favourite oven cleaning specialists**

**LET US HELP**  
call Clive Wallace on  
0800 140 9800  
07825 709 354  
I look forward to hearing from you  
[www.oven.co.uk](http://www.oven.co.uk)  
Ovenu (South Cotswolds)

**Buskins Shoe Shop  
Nailsworth**

- Ladies shoes
- Mens shoes
- Bags & purses

Tel: 01453 836836  
[www.buskins.co.uk](http://www.buskins.co.uk)





## The Fleece Inn, Hillesley

We're open from midday daily, and offer a range of local produce and real ales.  
 For Bookings Phone: 01453 520003. See our Website for what's on and menus at  
[www.thefleeceinnhillesley.com](http://www.thefleeceinnhillesley.com)

\*\*\* 10% Discount on Beers for card-carrying CAMRA Members \*\*\*

### There's loads going on at The Fleece May:

Day	Date	Time	Event
Sun	03-May	8pm	<b>Quiz.</b> Teams of four, £2 per head, prizes and charity fund raising
Sun	10-May	7:30pm	<b>Acoustic Evening.</b> Sing, play or recite – or just enjoy the free live entertainment
Wed	13-May	10:30am	<b>Coffee Morning.</b> Come have some delicious Fleece coffee, tea and cakes. Meet and gossip about village life and also support a worthy charity with the raffle
Sun	17-May	7:30pm	<b>Board Games</b> evening (for grown-ups). Come along and play some of those perennial favourites such as Balderdash, Articulate and Cluedo, or maybe learn a new one, all whilst enjoying a glass of beer or wine
Sun	24-May	7:30pm	<b>Vinyl Night</b> – music appreciation on old-school vinyl. Dig out your tunes on the theme of "Crime & Punishment", and join us for a superb evening

### Thursday Evening Meal Specials:

*May = Curry*

**HAPPY HOUR: Monday to Friday between 3pm and 7pm**

ENJOY A PINT OF ALE, FOSTERS OR THATCHERS GOLD or a SMALL GLASS OF HOUSE WINE for only £2.80

## Westward Travel

(John & Laura Simmons)

TEL: 01453 521999

### Latest Trips:

#### May:

		ADULT	CHILD
Sat 9th	Exeter	£17.00	£11.50
Thur 14th	Lord of The Dance Dangerous Games	£43.50	£41.00
Sun 17th	Weston-Super-Mare	£11.00	£ 7.50
Mon 25th	Bournemouth	£17.00	£11.50
Tues 26th	Moreton-in-Marsh & Bourton-on-the-Water	£12.00	£ 8.00

#### June:

7th–11th	Carmarthen Tour	Full details on request	
----------	-----------------	-------------------------	--

**Book at Hawkesbury Post Office or Westward Travel office in Wotton.**

MissDis.co Mobile Disco Hire

[www.MissDis.co.uk](http://www.MissDis.co.uk)

Quality service and competitive rates

Raising funds for World Challenge

[abbie@missdis.co.uk](mailto:abbie@missdis.co.uk)

01454 326155 | 07531 377077



MANGA PORTRAITS

Japanese anime style caricature

portraits drawn by hand from photos

[abbie@hawkesburyCommon.co.uk](mailto:abbie@hawkesburyCommon.co.uk)

01454 326155 | 07531 377077

Raising funds for Ecuador World Challenge 2015.

Sign up to my [easyfundraising.org.uk](http://easyfundraising.org.uk) page and help

me raise money simply by shopping online with your favourite online retailers.





## Babysitting, Dog Walking and Pet Sitting



Natalie Atkinson	01454 238858	I am a reliable and experienced 16 year old available for babysitting on most week days (june to september), evenings and weekends anytime.
Cerys Bradley	01454 238761	19yr old, experienced babysitter available all day and/or evening for child minding or mathematics tutoring ( up to and including GCSE level ).
Caroline Carnegie	60 Highfields 01454 238918	16yrs old. Available for Baby sitting, Dog Walking and Pet Minding. .
Charlie Carnegie	60 Highfields 01454 238918	14yrs old. Available for dog walking and grass cutting.
Abi Cooper	01454 238836 / 07795 321337	I am an energetic 15 year old with experience in babysitting with a younger sister and many younger cousins, also available to pet sit & walk (whatever the animal may be)! Cake baking is also a hobby of mine so willing to make lots of cakes... Just ask!
Caitlin Houlbrook	01454 238844 07779396639	I am 15 years old, a reliable and experienced babysitter, dog walker (I own a dog so can handle them very well) and pet minder. Available most days after school and weekends, or anytime in the school holidays.
Abbie Merritt	01454 326155 07531 377077	I am raising funds for my World Challenge trip to Ecuador in 2015. I am available to babysit most evenings and weekends. I am also able to offer a pet minding service - specialising in exotic pets. I am used to handling reptiles, amphibians, invertebrates, arachnids, and anything woolly, fluffy or hairy.
Katie Munro	01454 238 174	I am an 18 year old experienced babysitter (references can be supplied). I am reliable and trustworthy and love working with young children. I am available anytime - during the day, evenings or weekends.
Ellie Parker	01454 238261	I am reliable and responsible 15 year old who is available for babysitting at weekends or petcare / dog walking after school or weekends. I can also assist with horses including mucking out, turning out, bringing in etc.
Jake Pember	01454 232997	I am fundraising for KLB World Challenge 2015 expedition to Ecuador. I am available for babysitting, dog walking, feeding pets or any other jobs - just ask and I'll see if I can oblige.

### STORAGE

Secure dry storage units  
in solid Cotswold stone barn

Domestic only

Minimum 2 months

Tel: 01666 840205

### Dog Harmony

Dog/Puppy Training, Behavioural Problems  
Homevisits, Socialisation,  
Dog Walking Service

Contact Je-An: 01454 238145 / 07540336508

email: [info@dogharmony.co](mailto:info@dogharmony.co)

[www.dogharmony.co](http://www.dogharmony.co)

### Burlington Design Group

Gillian Osborne

\*\*\*

2 Horton Road, Horton, South Glos, BS37 6QH

Tel - 01454 315313 Mob - 07931862069

e-mail - [burlingtondesigngroup@talktalk.net](mailto:burlingtondesigngroup@talktalk.net)

\*\*\*

A friendly service offering bespoke curtains,  
loose covers, upholstery and every type of blind.

A wide range of fabrics available,  
Established over 20 yrs.

### HOME COMPUTER PLAYING UP? NEED SOME HELP? DON'T DESPAIR!

For help with:

- Windows 98, Me, XP, Vista and 7 and 8
  - The Internet, Wireless Router Setup
  - Hardware Upgrades and Repairs
  - PCs Custom Built to order
- No problem too small or too large!

Contact: Lloyd Buckingham

Tel: 07940 155064

or 01454 260504

Email: [lb\\_cs@hotmail.com](mailto:lb_cs@hotmail.com)

**LB Computer Services**  
**YOUR LOCAL, LOW COST,  
HOME COMPUTER REPAIRER**



*Run for the community by the community*

*Offering you the latest in digital widescreen technology with Xpand 3D.*

**Woman in Gold Running time: 111 mins Cert 12A**

Sixty years after she fled Vienna during World War II, an elderly Jewish woman, Maria Altmann, starts her journey to retrieve family possessions seized by the Nazis, among them Klimt's famous painting 'The Lady in Gold'. Together with her inexperienced but plucky young lawyer Randy Schoenberg, she embarks upon a major battle which takes them all the way to the heart of the Austrian establishment and the U.S. Supreme Court, and forces her to confront difficult truths about the past along the way.

Friday, 1st May 19:30      Saturday, 2nd May 19:30      Sunday, 3rd May 19:30      Monday, 4th May 20:15  
 Tuesday, 5th May 19:30      Wednesday, 6th May 20:30      Thursday, 7th May 19:30

**Wild Tales Running time: 115 mins Cert 15**

"Inequality, injustice and the demands of the world we live in cause stress and depression for many people. Some of them, however, explode. This is a movie about those people. Vulnerable in the face of a reality that shifts and suddenly turns unpredictable, the characters of Wild Tales cross the thin line that divides civilization and barbarism. A lover's betrayal, a return to the repressed past and the violence woven into everyday encounters drive the characters to madness as they cede to the undeniable pleasure of losing control.

Sunday, 10th May 19:30

**NT Live: Man and Superman Running time: 180 mins Cert 12A**

A romantic comedy, an epic fairytale, a fiery philosophical debate, Man and Superman asks fundamental questions about how we live. I tell you, the first duty of manhood and womanhood is a Declaration of Independence Jack Tanner, celebrated radical thinker and rich bachelor, seems an unlikely choice as guardian to the alluring heiress, Ann. But she takes it in her assured stride and, despite the love of a poet, she decides to marry and tame this dazzling revolutionary. Tanner, appalled by the whiff of domesticity, is tipped off by his chauffeur and flees to Spain, where he is captured by bandits and meets The Devil. An extraordinary dream-debate, heaven versus hell, ensues. Following in hot pursuit, Ann is there when Tanner awakes, as fierce in her certainty as he is in his

Thursday, 14th May 19:00

**Insurgent 2D Running time: 125 mins Cert 12A**

THE DIVERGENT SERIES: INSURGENT raises the stakes for Tris as she searches for allies and answers in the ruins of a futuristic Chicago. Tris (Woodley) and Four (James) are now fugitives on the run, hunted by Jeanine (Winslet), the leader of the power-hungry Erudite elite. Racing against time, they must find out what Tris's family sacrificed their lives to protect, and why the Erudite leaders will do anything to stop them. Haunted by her past choices but desperate to protect the ones she loves, Tris, with Four at her side, faces one impossible challenge after another as they unlock the truth about the past and ultimately the future of their world.

Friday, 15th May 17:00

**Dark Horse Running time: 86 mins Cert PG**

An inspirational true story of a group of friends from a working men's club who decide to take on the elite 'sport of kings' and breed themselves a racehorse

Sunday, 24th May 19:30

**ENO: The Pirates Of Penzance (Live) Running time: 135 mins**

Guaranteed to be a major event, Mike Leigh (Palme d'Or winner and five times Oscar nominee) directs his first ever opera for the stage. Gilbert and Sullivan's popular comic opera features much-loved favourites including A Policeman's Lot is Not a Happy One and I am the Very Model of a Modern Major General.

Tuesday, 19th May 19:30

[Find us on Facebook - Electric Picture House](#)

[Follow us on Twitter - @WottonCinema](#)

Information is correct at time of going to press.

Please call for the latest details.

Wotton Electric Picture House  
 18A Market Street, Wotton-Under-Edge, Glos, GL12 7AE  
 01453 844601 - general enquiries (during opening hours)  
 01453 844401 - 24 hour recorded message



S & S GARAGE DOORS

SUPPLY INSTALLATION AND REPAIR OF ALL  
 TYPES OF GARAGE DOOR

INFO@SANDSGARAGEDOORS.COM

WWW.SANDSGARAGEDOORS.COM

01454 279 199

**PAINLESS SPINAL TOUCH**

POWERFUL • GENTLE • PROFOUND

FROM THIS



STRESS & STRAIN  
 EXHAUSTION  
 MALFUNCTION

TO THIS



EASE & FLUIDITY  
 JOYFULNESS  
 VITALITY

Restores the natural equilibrium by re-aligning the body with its centre of gravity. Release from pain and an increased sense of well-being inevitable follow.

ANGELA ECKLES 01454 238 894 / 07947862 622  
 30 years experience in natural therapies



# May Sudoku

Neil Fozard

For the uninitiated:-

to solve the puzzle, each row, column and 3x3 box must contain each of the numbers 1 to 9.

**EASY !!**

**NOT SO EASY !!**

			2					
6			7	1				8
		8				3		
	7						8	
9	5			6			2	7
		4	1		3	7		
7	9		4		2		5	6
	1	5				8	3	

	2							
5				7				
7			6		2	5	1	
		8		4		1	5	
			1		9			7
		9		8		2	6	
8			2		5	4	3	
1				6				
	6							

Answers to the April quizzes:-

'Easy'

2	6	8	9	3	5	4	1	7
9	5	7	4	2	1	3	8	6
4	1	3	6	7	8	2	5	9
1	2	4	7	8	3	9	6	5
8	3	6	5	1	9	7	4	2
7	9	5	2	6	4	8	3	1
5	7	2	8	4	6	1	9	3
3	8	9	1	5	2	6	7	4
6	4	1	3	9	7	5	2	8

'Not so Easy'

9	4	5	6	3	8	1	2	7
7	1	8	2	5	9	4	6	3
3	6	2	1	4	7	8	5	9
1	5	6	8	9	3	2	7	4
8	3	4	5	7	2	6	9	1
2	9	7	4	1	6	5	3	8
6	7	1	9	2	4	3	8	5
5	8	3	7	6	1	9	4	2
4	2	9	3	8	5	7	1	6



**Looking for  
LEGAL  
ADVICE ?**

EXPERT LEGAL  
ADVICE

**FAMILY LAW  
EMPLOYMENT  
LAW  
CIVIL LITIGATION**

Appointments at a  
place local to you—at a  
time convenient for  
you.

Bevan & Evely Solicitors is authorised and Regulated by the  
Solicitors Regulation Authority under ID Number 607770  
Head Office No.3, Northavon Business Centre, Yate, BS37 5NH  
office@bevanevelmy.co.uk

## BEVAN EVELMY SOLICITORS

SOLICITORS WITH A  
DIFFERENCE

Local Meeting  
Offices -  
Legal Advice  
Clinics In Your Area

[www.bevanevelmy.co.uk](http://www.bevanevelmy.co.uk)  
Call Us for a FREE No Obligation chat  
0333 3208 600 (Standard Rate calls)



Mikki's Mobile Clipping

07970 868751

mikki.ponter@btinternet.com

\*Dog Grooming\*

\*Horse Clipping\*



\* 10% discount \*  
with this advert

# Hawkesbury Contact List

Group	Contact	Phone	Website	Email
1st Hawkesbury Upton Guides	Louise Roberts Jane Bleaken	238628 232993		louise.roberts622@btinternet.com
After School Club	Louisa Tooker or Celia Rowlands	238629 or 232920		<a href="mailto:hawkesburyasc@hotmail.co.uk">hawkesburyasc@hotmail.co.uk</a>
Badminton Club	Roy Townsend	238397		roy.townsend3@btinternet.com
Bethesda Chapel	Mervyn Coates	01453 843771		
Brownies	Liz Howard	238417		lizhowardconsult@aol.com
Chipping Sodbury Police Station	Non-emergency: PC Mike Hart: PCSO Rich Gay: PCSO Sian Rolling :	101 07919628618 0750006433 07825388927	www.avonandsomerset police.uk	michael.hart@avonandsomerset police.uk
County Councillor	Sue Hope	238673		sue.hope@southglos.gov.uk
Cricket Club	Tim Chancellor Anne Evans	01453 845693 294202	www.hawkesburycricket club.co.uk	timchancellor@hotmail.co.uk annieandbernie@btinternet.com
District Councillor	Sue Hope	238673		sue.hope@southglos.gov.uk
Evergreens	Mandy Clarke	01454 261436		
Friends of St Mary's	Pauline Setterfield	238307		pleensetterfield@hotmail.com
Gardening Club	Terry Truebody	238364	www.hawkesbury-gardening- club.org.uk	terry@truebody.co.uk
Hall Booking / Village Calendar Secretary	Lorraine Rutter	07972 508621 01454 299761	www.village-hall.org www.hawkesburyupton.com	bookings@village-hall.org calendar@hawkesburyupton.com
Hawkesbury Horticultural Show	Keith Player (Chairman)  Vicky Rispin (Secretary)	238463 or 0752 868 4267 232910	www.hawkesburyshow.org	keithjosieplayer@hotmail.co.uk  vicky@coombeview.com
Hawkesbury Primary School	Louise Lewis (Head)	238629	www.hawkesburyschool.uk.org	hawkesburyuptonprimary. school@southglos.gov.uk
Hawkesbury PTA	Becki Spokes	238841 07503 097554	http://www.hawkesbury primarieschoolpta.com	debbiehawkesbury@googlemail.com
Hawkesbury Upton Recycling Group	Neil Bennett	07914 908211		peterandpatsherry@tiscali.co.uk
Hawkesbury Volunteer Transport	Trip Coordinators: ( <i>arrange transport to medical appts.</i> ) General Enquiries:	0797 206 5665  0797 206 5496		alan_shewry@msn.com
HU5K	Vicki Parker		www.hu5k.org	vicki.parker@ezek.com
Local History Society	Barrie Hope	238673	www.hawkesburylocalhistory society.co.uk	hope.poolfarm@btinternet.com
Methodist Church Schoolroom:	Mrs Moira Coates	238479		
Methodist Church:	Rev Debra Chidakwa	01454 853965		
Neighbourhood Watch	Chris Rispin	232910		chris@coombeview.com
Parish Council	Hazel Bleaken	299227		hazel.bleaken@gmail.com
Parish News	Vicky Rispin (copy/subs) Fiona Rowe (copy) Jill Bendeaux (ads)	232910	www.hawkesburyupton. com/parish_news.html	vicky@coombeview.com parishnews@hawkesburyupton.com parishnewsads@hawkesburyupton.com
Pre-School	Louisa Tooker	07989 484 774	www.hawkesbury preschool.org.uk	enquiries@hawkesburypreschool. org.uk
Toddlers	Laura Chappell	07528 064321	https://www.facebook.com/ groups/670619976334853/	fihurst@outlook.com
Rainbows	Louise Roberts	238628		louise.roberts622@btinternet.com
RAOB (Bufs)	Iain Rae (Treasurer) Peter Webb (Secretary)	238702 294916		iainrae@uwclub.net susan.peter@uwclub.net
Royal British Legion	Sam Allen	238417		howrdallen@aol.com
Senior Citizen's Fund	Sam Allen	238417		howrdallen@aol.com
St Mary's Church	Linda Fairney	01454 238 553		william@fairney.wanadoo.co.uk
Tennis Club	Howard Bradley Tricia Perris	238761 294768	www.hawkesburytennis.org. uk	howardb@dexam.co.uk
Theatre Group	Jenny Harris	238411		harris@backst.freeseve.co.uk
WI	Gill Truebody	238364	www.hawkesburyand hortonwi.org.uk	gill@truebody.co.uk
Youth Group	Mark Frankcom	238720		markfrankcom@gmail.com

We do our best to keep the contact list up-to-date. Any changes should be sent to [parishnews@hawkesburyupton.com](mailto:parishnews@hawkesburyupton.com).