

*Hawkesbury
Parish News*



EDITORIAL

Fiona writes:

Welcome to the May 2012 issue of Hawkesbury Parish News.

It must be almost May. The cherry tree burst spectacularly into bloom, closely followed by howling winds and heavy showers! Why is it always the same? Still, I'm proud to say this year's efforts at veg growing are proving far more successful. Salad leaves are ready to pick, spring onions are on the way and I'll soon be harvesting coriander and rocket. To cap it all, the tomatoes are already around a foot tall and looking mighty fine. Of course, that might have something to do with my mum starting them off in the warmth and sun of her conservatory in Cornwall...but if you won't tell anyone, neither will I!

This issue reveals the exciting details of the **Diamond Jubilee** celebrations.

A small team of people has been working very hard to make the extended weekend go with a right royal whizz-bang in Hawkesbury! Not only is there a **flower festival** and a **special service** at St Mary's, but also the "**Big Jubilee Lunch**" picnic at the Rec., which should be an excellent family event, with **competitions, games** and lots more – with the added bonus of the Hall facilities (in case of rain – *as if!*), the **bar** and a **50" tv** to watch the Royal Flotilla and national celebrations. And much, much more...

Get out that bunting, bake a cake, create a crown and a jubilee place setting and let's make the Diamond Jubilee one to remember for years to come!

Deadline for copy for the June edition is 15th May 2012.

Please send it in as early as you can!

Hawkesbury Parish News

Hawkesbury Parish News is edited, produced and distributed entirely by volunteers. Advertising and subscription revenue covers the cost of production only.

Typesetting, Fiona Rowe

Layout, Editorial: parishnews@hawkesburyupton.com

Treasurer & Vicky Rispin

Subscriptions: parishnews@hawkesburyupton.com

Editorial Team: Fiona Rowe
Vicky Rispin

Copy to: Fiona Rowe, 24 Sandpits Lane
Vicky Rispin, Coombe View,
High Street (next to the Village Hall)
parishnews@hawkesburyupton.com

Advertising: Jill Bendeaux
parishnewsads@hawkesburyupton.com

Distribution: Pauline Dixon 01454 299236
pcdixon@waitrose.com

Suzanne Flye

Printed by: Sprint Print,
22 Station Road, Yate. 01454 852255

Electronic copy always gratefully received — please save files in Microsoft Word or Rich Text Format (rtf).

Only digital photos sent by email can be accepted.

Disclaimer

Any opinions expressed or implied within this publication are not necessarily those of the Editors. The Editors reserve the right to exclude any item whose authorship is not disclosed. No responsibility can or will be accepted for any opinion, comment or error of fact printed in this magazine. All advertising is included in good faith; its inclusion does not necessarily endorse the product or service.

**Latest date for all items for the
June magazine is 15th May.**

Useful Local Info

Hawkesbury Village Shop

Opening Times

Monday - Saturday - 8am-6pm
Sunday - 8am-12:30pm

High St, Hawkesbury Upton. Tel: 238639




Hawkesbury Post Office

Opening Times

Monday-Friday - 9am-2pm
Saturday - 9am-12pm

Back Street, Hawkesbury Upton, GL9 1BB
Tel: 01454 238341



 **Postal Collection (opposite shop)**
Mon-Fri: 4:45pm / Sat: 10:30am

**Did you know that we have Websites for the
Village and also for the Village Hall?**

**www.hawkesburyupton.com and
www.village-hall.org**

You can use these websites to:

- Check the Hall & Village calendars
- Book the Hall online
- View the Hall & Parish Council minutes
- View past editions of this magazine
- Link to many other village organisations
- and much more.



Compost	£1.50 per bag
Logs	£2.50 per bag
Firewood	£1.50 per bag
Woodchip	£1.00 per bag

*All available from the
composting site behind
the village hall*

For more information on prices and delivery of
larger amounts, contact:

Steve Dagger on 07903 037297

DATES FOR YOUR DIARY



Next Parish Council Meeting

The next Parish Council meeting will be on **Mon 14th May 2012**, 7.30pm in the Village Hall.

Coffee Mornings

Coffee Mornings take place on Mondays from 10am - 11.30am.

At Peggy Woffenden's house

Tea, Coffee and a biscuit or two for 50p. All welcome.



Yoga classes



with Joan Boulton every Thursday morning at the Methodist School Room 10-11.30am. £6 a session.

All ages and abilities welcome. For more details call 01454 238411

Hawkesbury Cricket Club

Rounders Day

has a confirmed day - please put it in your diary!



Sunday 8th July

Details will follow, but start making those teams of 10!!

♠ ♥ BRIDGE ♦ ♣

- Do you want to learn how to play this most stimulating and social of card games? Or do you already know the basics, but want to improve?
- I will be giving lessons this autumn, at both levels. My courses are designed for anybody who wants to have fun, learn an enjoyable hobby and make new friends.
- Come on your own or with a friend, you'll be assured of a warm welcome.
- For details: contact Ian Cooke
- 01666 890261
- ianjcooke@hotmail.com

SELF-CATERING COTTAGES ON INGLESTONE COMMON

Having a family do or some building work?

There are a number of self-catering cottages available, accommodating from 1 – 14 people.

Ring Hazel on 01454 299227 for details or view on www.cotswoldedgecottages.com

Evergreens

8th May 2012



Trip to Salisbury, depart at 9.30

Depart from The Fox — 9:30am

If you would like to come along and need a lift please give me a ring.

Mandy 01454 261436



Mobile Library



Times & Dates

14th & 28th May 2012

Hawkesbury Village Hall	2.35 - 3.00
Hawkesbury War memorial	3.05 - 3.20
Hawkesbury Highfields	3.25 - 3.40

Hawkesbury Primary School PTA's first ever

5k FUN RUN



Saturday 16th June 10am

In aid of the School Swimming Pool
Everyone welcome - £6 adults, £4 children

For entry form and more details, please see www.hawkesburyprimaryschoolpta.com

Hawkesbury Cricket Club —

Forthcoming events

Egg Catching
Coombe Farm —
Friday 8th June

Curry & Race Night
@ Village Hall 7.30pm —
Sat 23rd June 2012

KLEEN & GREEN

**Professional
cleaners
who care**

- ◆ Domestic and Commercial cleaning—daily/weekly/one off
- ◆ All staff police checked, fully trained, fully insured
- ◆ Local, reliable, friendly
- ◆ Ironing service
- ◆ Competitive rates

Tel: Sarah 01454 851487
Christine 07900 831967

NEWS FROM HAWKESBURY PRIMARY SCHOOL PTA

The start of the new summer term finds the PTA getting ready for some events open to all, whether or not you have a connection with our school. We do hope you'll want to join in!

Hawkesbury Upton 5K Fun Run (Saturday 16th June, 10am start)

We're really excited to be launching this new event to raise money for the school's much-loved swimming pool, used daily in the Term 6 and open to village children during the summer holidays too. We know we've got lots of enthusiastic runners in our village and this new local race might encourage more people to take up running. But even if you're not a seasoned runner, you're welcome to join in. The route will be level and scenic, suitable for all ages and abilities, from complete beginners (and walkers!) to elite runners. You don't need to worry about getting sponsors – all we ask is that you pay a race entry fee of £6 per adult, £4 per child. More details will follow in next month's parish magazine and will also be posted on the PTA website, along with an application form. Please spread the word far and wide, especially to friends keen on running. Running club entries are also welcome.

Summer Ball (Saturday 16th June)

Our annual May Ball has crept forward to June this year, but promises to be as grand and as enjoyable as ever. This year the theme is "The Great British Ball" which encompasses the other two great topics of the moment, the Diamond Jubilee and the London 2012 Olympics. Tickets are just £27.50 a head, to include a welcome drink, canapés, a main course and a dessert, followed by dancing to a custom-made disco (please submit your music requests when you book your tickets!) You don't need to be a parent or part of the PTA to attend this event – if you enjoy an excuse to dress for dinner and dance the night away, without the need to worry about driving home, this is a great opportunity!

Thank Yous

We'd like to thank the Parish Council for their generous donation of £90, which will make a real difference to us, e.g. paying for new shelving units required to create a new Junior Fiction Library. We'd also like to thank Pauline and Colin Dixon for providing us with a free stall at the recent Severn View Farm Open Day. We much appreciated the opportunity to sell our secondhand books to a new audience at no cost to ourselves.

Summer Fair

Finally, it will be our turn to provide other community groups and small businesses with free fundraising stalls at our ever-popular Summer Fair in July. If you are part of a local club, interest group or organisation and would like to take us up on this offer, please let us know and we'll save you a space!

For more information please visit our website: www.hawkesburyprimaryschoolpta.com

Debbie Young, PTA Secretary

Tel 01454 238401 Email debbiehawkesbury@googlemail.com



Hawkesbury Upton Recycling Group

The AGM for Hawkesbury Upton Recycling Group (HURG)
will be held on 10th May at 7.30pm at The Beaufort.

Everybody welcome.

Enquiries..... Pat Sherry 238791

SEVERN VIEW FARM
— Sold on Taste —

Boarding Cattery
01454 299471



Warm, comfortable, secure holiday
accommodation for cats.

Special diets and medicines
catered for

SEVERN VIEW FARM
— Sold on Taste —

Organic Farm Shop
01454 299236

Good, tasty organic food from our
farm on Inglestone Common.

Open Saturdays and Sundays
- 10am to 4pm.



PEGASUS
HEATING AND PLUMBING

OFTEC Registered C8787
GAS SAFE GAS INSTALLER No 68606

- ♦ Oil, Gas and Solid Fuel
- ♦ Installations and Repairs
- ♦ Bathrooms and Kitchens
- ♦ Domestic and Commercial
- ♦ Lead work specialist

ALL WORK GUARANTEED

Tel 01454 327708 Mobile 07860 471232



SAVE THE DATE!

Saturday 16th June 10am

Hawkesbury Primary School PTA's first ever

5k FUN RUN

In aid of the School Swimming Pool

Everyone welcome - £6 adults, £4 children

For entry form and more details, please see www.hawkesburyprimaryschoolpta.com

Local Project Funding – An Update

As you may have read in recent issues of the *Hawkesbury Parish News*, we were offering to provide financial assistance to local projects within the parish and invited applications and suggestions.

Over the past few weeks, we have considered several potential projects and are delighted to announce that we are able to assist the following Hawkesbury projects/organisations:

Hawkesbury Diamond Jubilee Celebrations

£200 towards the festivities

Hawkesbury Cricket Club

Funding for 2 heavy duty picnic-style benches for the Cricket Ground (total cost £255.32)

Hawkesbury Pre-School

Financial assistance to purchase specialist storage equipment for the Pre-School (total donation £450).

We hope many of you will benefit from the above donations.

Parish News Team

B.H. COLE & SON LIMITED

Tel: 01454 238896 or mobile: 07970 911412

- ◆ NHBC Registered Housebuilders
- ◆ New Housebuilding
- ◆ Extensions & Conservatories
- ◆ Renovation & Refurbishment
- ◆ Patios, Paths, Walls & Landscaping
- ◆ Natural Cotswold Stone Walling a speciality

BUILDER'S RUBBLE, DEBRIS, GARDEN WASTE...

Any old junk cleared and hauled away
I can do the job at less than it would cost to hire a skip...
AND you don't have to load it!

Call TOM COLE on 01454 238896
MOBILE: 07970 911412



YOU ARE CORDIALLY INVITED TO ATTEND
THE CELEBRATIONS OF HER MAJESTY QUEEN ELIZABETH II
ON THE OCCASION OF HER DIAMOND JUBILEE

THE PROGRAMME OF EVENTS WILL RUN AS FOLLOWS.....

*BEST DECORATED HOUSE COMPETITION–please have your house ready by the 28th May–winner announced on 3rd June at the village hall

Friday 1st June

*Preview evening of the Flower Festival at St Mary's Church–from 7pm–the Festival will run over the bank holiday weekend.

Sunday 3rd June

Celebration Jubilee Service–this will be a combined Church Service–10.30am at St Mary's

*Bring your picnic along to the Rec to join The Big Jubilee Lunch, from midday onwards and enjoy a fun filled afternoon–there will be some tables and chairs on the field, but please bring picnic rugs, gazebos, fold up chairs, tables if you can as well as all your 'supplies', including bbq (disposable ones must be put on brick provided)

*help build a Crown of Cakes–bring your cakes, large or small, decorated or not, to make a community celebration cake–photo to be taken before being shared and eaten!

*CROWN COMPETITION–judging 3rd June 2.30pm at the village hall

*Tea/coffee and squash available please bring own mugs/cups–help yourself–no children in the kitchen!

*there will be a pay bar available

*There will be a 50" tv screen set up outside so you can watch the Royal Flotilla in the afternoon(starts 2–3pm)

*There will be live music, panning for diamonds, spot the corgi, egg catching, organised team games, jubilee face painting 12–1pm and much more

*musicians out there, come and join jamming session –all welcome

*The colour theme is red , white and blue–join in the fun and dress up!

Please help set up from 9am

Monday 4th June

*Afternoon Tea in the village hall 2–4pm incl slide show and display–bring your photos to put on the Era Boards–any memorabilia welcome

*Come and watch the Buckingham Palace concert live on the outdoor screen–7.30–10pm (please bring your own refreshments etc.), followed by a silent disco (download your music and share with friends or just listen to your own) while you dance away with glo sticks

*a Beacon will be lit along Starveall Lane, courtesy of the Duke of Beaufort–meet on the Plain at 9.15pm with your lanterns and drinks, to raise a toast to the Queen before setting off to watch the Beacon(or watch from the bottom of the Rec)

*Pie,Pint & Quiz Night at the Beaufort Arms from approx 7pm

Tuesday 5th June

come and watch the Thanksgiving Service at St Paul's followed by the Carriage Procession and Fly Past–details to follow

Commemorative mugs–free to children 0–5yrs–please let Danielle know, for sale to anyone else–price to follow (under £3), please make your interest know in shop/P.O

A.J. MORGAN FARM PRODUCE
France Lane Farm Tel: 01454 238215

Traditionally reared pork & lamb, Free Range Eggs
Home produced dry cured bacon, ham, gammon, Salami, Chorizo,
Hawkesbury Faggots, Black Pudding, 1/4lb beefburgers,
Various flavour sausages, including NEW Spicy Chilli
All home made in our five star premises.

Only cooking for one? Did you know - you can buy just one sausage, one faggot, one slice of ham, one rasher of bacon & even one egg if you want to!

Last minute BBQ? Unexpected guests to feed?
Shop Officially Closed? Don't worry just call in, or ring us!

Karen 07929 947149 or Andrew 07973 137799.

MG COUNTRYSIDE DEVELOPMENT

Fencing, Tree Surgery, XC courses,
Landscape Gardening, and Fire Wood

Miles Batten

07866486808

Giles Bleaken

07976562323

Website:

www.m-g.org.uk

Email:

miles@m-g.org.uk

Based at Upper Chalkley Farm, Horton

Other jobs available upon request

HAWKESBURY HORTICULTURAL SHOW 2012

Changes to Photography classes for both adults and children

Following discussion at a recent Show planning meeting, it was decided to update the topics for the photography classes at this year's show. In order for there to be no confusion on the day and to give you plenty of time to snap that winning entry, here are the new topics and the age groups, where relevant -

Section 4: Arts and Crafts OPEN – Adults

- Class 447 Photograph, colour or black & white, *up to 13cm x 18cm*
Topic: **Diamond Jubilee Celebrations**
- Class 448 Photograph, colour or black & white, *up to 13cm x 18cm*
Topic: **Humorous** any subject (to include a caption with the photo)
- Class 449 Photograph, colour or black & white, *up to 13cm x 18cm*
Topic: **Landscape**
- Class 450 Photograph, colour or black & white, *up to 13cm x 18cm*
Topic: **Hawkesbury Village Life**

Section 5: Children's Section - Crafts

- Class 521 Photograph, colour or black & white, *up to 13cm x 18cm*
Topic: **Hawkesbury Village Life**
- Ages 4-6 Topic: **Any subject**
Ages 7-10 Topic: **Sport**
Ages 11-16 Topic: **Animals**

Remember - Entrant's age is that on 1st September 2011

Full details of all classes and official entry forms will be in the Show Schedule, which should be available in the Shop and Post Office at the end of June. Entry forms will be available to be downloaded from the Hawkesbury Show website : www.hawkesburyshow.com

Check out some great archive photographs on this website too.

❖❖❖❖ TILING SERVICE ❖❖❖❖

Professional tiling at competitive prices
Friendly, reliable, courteous service
*For a free quotation, please contact
Peter at Artisan Tiling*

0796 0645893 artisantiling123@aol.com

Beaufort Minibuses & Taxis Ltd 4 6 8 16 24 seats

Specialists in Disabled Transport
Accounts Welcome
Advanced bookings only -
call Andy on 01454 313721
beauforttaxi@aol.com



Spring Walk Sunday 6 May 2012

Come and see the Bluebells with us. This spring walk is taking place on Sunday 6 May 2012, meeting at the village hall car park at 10.15 am for a 10.30 am start. The walk will take us through the Coombs to Lizens Wood. It does have some steep bits and is about 4.5 miles in total but we always have a break so bring a coffee and snack with you in your ruck sack. These walks are a great way to see the countryside, meet friends old and new and step out on a rewarding and enjoyable way to experience the fresh spring air, and of course see the beautiful Bluebells. Dogs are welcome.

If you would like to receive email notification of future walks, please contact Jane Jones on rightsofwaygroup@hawkesburyupton.com or telephone 01454 238633.

An Appeal to Dog Walkers

In Hawkesbury we are very fortunate to have many open spaces and footpaths that are ideal for dog walking.

However, many fields in the village are home to livestock and poultry.

At time of going to press, a lamb was found in a field down Highfields Lane with a nasty bite wound, almost certainly from a dog. The lamb subsequently died. Poultry has also been attacked elsewhere in the village.

Please can dog walkers therefore ensure that their dogs are under control and on a lead when in the vicinity of livestock? Thank you.



LYNN'S DRIVING SCHOOL

GRADE 5 female driving instructor.
Weekly lessons or intensive courses.

I have a Nissan Micra which is easy to drive.

Pass plus registered.

Excellent 1st time pass rate.

For further details please contact...

01454 219101 or 07919410064
or lynnie1000@hotmail.com



Steve Green Photography

Family portraits in your own home
1 hour sitting inc. FREE print - £30



t. 07580 130763 or 01454 238022
e. steve@steve-green-photography.co.uk
w. www.steve-green-photography.co.uk

A Signal Success

If you think the mobile phone signal in Hawkesbury isn't great, you should try touring the coast of Scotland. In our week long trip around Fife (that's the bit that sticks out to the right above Edinburgh), there was hardly a day went by when I could text or call home. Even my usual Hawkesbury tricks – holding the phone above my head or next to a window – would not persuade a single one of those aggravating little bars turn black.

If we'd been in the Scottish Highlands, I'd have understood the problem: there'd be no line of sight contact with mobile masts. Those pesky mountains do get in the way sometimes.

I was once involved in a BBC outside broadcast at Westonbirt Arboretum. The technical guy complained that the proximity of tall trees was the one thing to avoid when trying to make a transmission. (Cue to sack the programme planner!) But when you're in treeless ground at sea level, there really is no excuse.

Ironically, we encountered on our coastal tour some surprisingly successful communication feats using old technology. While imprisoned in Lochleven Castle, Mary, Queen of Scots used her pearl earrings as a signal – she gave them to a secret messenger to send back to her as proof that his mission had succeeded. The intrepid polar explorers who joined Captain Cook on the RRS Discovery (now a floating museum in Dundee) packed rockets to use as distress signals. They didn't seem to have an alternative for good news.

But my favourite was the system used by Robert Stevenson's Bell Rock Lighthouse, built 200 years ago 11 miles off the coast of Arbroath. To indicate to those on dry land that all was well, the lighthouse keepers had to hoist a large brass ball to the top of the lighthouse tower each day. If on any day the ball did not appear, shore staff assumed there was a major emergency at the lighthouse (e.g. serious illness or death of the keepers) and sent out a rescue boat.

There was only one tale of an unnecessary emergency mission: when a large seabird nested in front of the light, obscuring the view of the ball.

So even the least technical solution isn't failsafe. I think I'll stick with my mobile. And dry land.

Debbie Young

Debbie's blog is at www.youngbyname.wordpress.com

Hawkesbury After School Club



**Monday to Thursday
2.30 to 6pm**

All children from Hawkesbury and neighbouring schools are welcome to come along and enjoy our activities.

We aim to provide quality childcare at an affordable price and to offer a place where children can play freely and interact socially in the care of trained playwork staff.

If you book regular sessions in advance the price is £9 for your first child and £6 for each sibling. If you would like to book your child in for a one off session, the cost is £10 per session for the first child with siblings costing £7. These sessions are subject to availability.

All sessions can be booked by either dropping in to a session and having a chat with Louisa, our senior playworker, calling the ASC mobile on 07527 224741 during club hours, or call the school office during school hours.

If you would like to know more about After School Club call me, Kim Anderson on 01454 238799 and I will be happy to help.

Frank you very much!

Thank you once again to all those who have donated their used stamps for the **Hearing Dogs** charity in the last few weeks. I was able to deliver another carrier bag-full to our friends in Cornwall at the end of March. They were so grateful and would like to pass on their sincere thanks to everyone who is taking the time to save them.

Not only were more bags and envelopes popped through the door last month, but I was absolutely amazed when a large envelope arrived in the post from a kind lady near Birmingham, who receives the parish magazine and packed up her stamps and sent them on too! It got us wondering just how far the parish magazine actually travels every month!

Fiona Rowe, 24 Sandpits Lane.

The Secret Studio

Beautiful creations made for you

From our Studio in Petty France we sell hand-painted furniture and home & garden accessories. Furniture commissions also taken.

Open Tuesdays & Thursdays 10am-4pm

www.thesecondstudio.co.uk

Ella M: 07976 952426 Jane: 07766 712066



Hawkesbury Village Hall
Mon, Wed, Thurs & Fri 8.45 - 11.45am

**All children are welcome
from two years old**

Please contact us on
07989 484 774

Charity number 1013170 Ofsted Registered 136003



Hawkesbury & Horton W I

At the monthly meeting President Barbara Harvey welcomed everyone and thanked Hilary for the lovely cake she'd made for our Birthday Party in March. Barbara, accompanied by several other members, was our delegate at the EGM at Weston-Super-Mare, and she gave a detailed account of a very full day and excellent day. As well as coverage of WI business there were several excellent speakers and a WI market to be enjoyed, as well as a picnic on the seafront!

Members were reminded to make more use of Denman the WI College based in Oxfordshire. It offers a range of courses and provides excellent accommodation in a lovely setting. Establishments such as this cost a lot to run and need to run to capacity if possible. All who have been on day visits or courses have always come away saying what a wonderful time they've had and how much they've gained from it.

The WI Olympic Torch has now been passed on by Liz, Betty, Melanie, and Barbara, a very sportingly group of true Olympians - at least they were dressed for the part! Members of Rangeworthy WI then headed off to Tytherington with it in an American jeep. It was a fun occasion and a chance to socialize too!

Congratulations to Jenny Harris, Sue Hope, Pat Sherry and Barbara Harvey the team which represented us at the Marshfield WI Quiz Evening. There were 32 teams competing and they won it on a tie-breaker!

Nora Kennedy ran the Willow Workshop replacing Ellen Musgrove who was unable to come. Nora brought a collection of baskets from around the world, in all sorts of materials and with a range of uses, demonstrating their versatility. It seemed if there was a need then a basket could be made for it.

Having been a basket maker for many years Nora proved a very skilful demonstrator. Her willow comes from Somerset and is cut during the dormant period which is November to mid-March and is bought by the armful. Nora uses mostly brown willow the one straight from the tree, though it can be buff, or white, when stripped. Her willow has to be well soaked to stop it splitting and then dried before use. Basketmakers have a special vocabulary and it was interesting to hear of its uses.

Nora donated a basket she made to the raffle.

Flower of the Month was won by Judy Chancellor with a white daffodil.

Diary Dates

1st May - Resolutions Meeting

FIRE DRILL Life Running a Farm Shop (with samples)

Karen Cole & Drew Morgan

5th June - Garden Party. CHANGE OF DATE FROM PROGRAMME

Visitors are always welcome at our meetings which are held on the first Tuesday of the month at 7.30pm in the Village Hall.

Betty Salthouse 01454 238410

Coffee Mornings

Coffee Mornings are to continue on Monday mornings from 10am - 11.30am at Peggy's house through the spring & summer. All most welcome for a cup of tea or coffee & a biscuit or two for 50p.

Diana Noble



EEZEEFLOW

DRAIN CLEARANCE

Drainage problems – private and domestic

NO JOB TOO SMALL
Regional Coverage

CENTRAL OFFICE
PHONE: 01454 238200
FREEPHONE: 0800 3893037
FAX: 01454 238713

Pest Problems

If wasps are a nuisance and bugs are bugging you -

Ring Hazel on
01454 299227
To solve your
pest problems



CORNWALL 2012

Directly adjacent to the North Coast footpath, our stunning apartment is again available to rent. With 2 bedrooms/bathrooms it is our special retreat and has all the comforts of home.

Phone Chris on 07931 584810 for details.



HAWKESBURY GARDENING CLUB

www.hawkesbury-gardening-club.org.uk

TROWEL & ERROR

Meetings are held at 8pm on the 4th Monday of the month in the Methodist Hall in Back Street.

Our speaker in April was **Alan Phipps** who gave a talk which was entitled '**Smoke, Scenery, Spines & Flowers**'. At first it was difficult to see that this was a talk that had anything to do with gardening since it consisted of snowy scenes of Colorado in the spring and of restored steam locomotives trundling through the mountains belching black smoke. We eventually got onto some pictures of cacti in the southwestern states. Getting close to the places where cacti grow is apparently hazardous because the terrain is usually covered in very sharp volcanic debris that can cut even strong leather boots to ribbons. Cacti are indeed very interesting plants and produce beautiful flowers but since their flowering season is short you have to be there at the right time.

Our next meeting is on **Monday 28th May** when **Geoff Hobson** will talk about **Orchids for Beginners**.

If you are not a member but would like to hear a speaker that takes your fancy then come along as a guest – fee £2.50. For further information contact Terry Truebody on 01454 238364.

Plant Sale

in **Hawkesbury Parish Hall, Hawkesbury Upton** on **Saturday 12th May 2011**

from **10 until 12 noon**

Do you have plants, cakes or other food produce to sell?

Tables will cost £10 each if you live within the parish of Hawkesbury and £15 each if you are from outside the parish of Hawkesbury.

The tables measure approx 6ft x 2ft.

Please contact **Liz Howard** on **01454 238417**

National Garden Scheme—Open Gardens

Hodges Barn - 13th May - 14th May

Hodges Barn, Shipton Moyne near Tetbury is a very unusual C15 dovecote converted into a home. Roses, clematis and hydrangeas together with yew hedges, create formality around the house. Mixed shrub and herbaceous borders, water garden and woodland garden to side of house. Wheelchair access to part of garden, dogs on leads allowed.

Open 2pm-6pm, Adm £5, Child Free.

National Garden Scheme - Old Rectory - 13th May

The Old Rectory, Avening near Tetbury has a 3 acre garden with sculptures around C17 Cotswold Rectory (not open). Mature woodland, paddock with stream and Japanese bridge. Italianate terrace with steep banks and steps in places, shady planting, mixed borders and wild garden. Limited wheelchair access, dogs on leads allowed, plants for sale and refreshments available. Open 2pm-6pm, Adm £4, Child Free.

Mumbleys Farmhouse

"Complete Beginners"

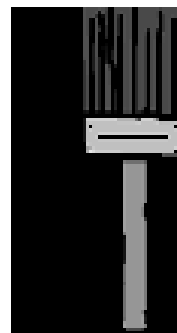
Ever Dreamt of Escaping the Rat Race and Running your own Smallholding?

We provide a range of one-day courses on smallholding or livestock topics. We start from the basics—no knowledge needed; all questions welcomed!

Courses: Bees for Beginners; Sheep for Beginners; Smallholder Taster Days; Starting with Hens & Ducks

Contact: Jules Moore on 01454 415296

www.mumbleysfarmhouse.co.uk



BRILLIANT WHITE DECORATING

Professionals too expensive!!!

THINK AGAIN!

I am experienced, fully insured and offer great value in decorating.

For Free Advice & Estimate

Contact Jackie White-

01454 238555 [mob: 07805 266520]

Hawkesbury Upton Neighbourhood Watch

Reducing the opportunity for crime



Theft Locally

Hawkesbury has a close community and has an excellent neighbourhood spirit it is therefore always sad to report that someone has taken advantage of that and committed burglary. It doesn't happen that often and therefore we tend to drop our guard. **DON'T!**

It is even more annoying when someone has gone to the trouble of securing a shed with good locks only for these to be cut off and the door forced and then some quite bulky items removed. How could that happen in a place like Hawkesbury and nobody see?

If you saw something unusual in the vicinity of Six Cottages between the 8th and 9th April 2012 – Easter Sunday/Monday then can you let the Police know, phone number below.

There are some useful things you can do to protect your belongings:

- With regard to pedal cycles or other equipment, note serial numbers, take a photograph and ensure when stored that they are anchored and marked.
- Register valuable items on www.immobilise.com and look there for other useful tips
- WATCH OUT they might come back!

If you see something suspicious ring the Police on 101

If you see a crime in progress RING 999



HOLIDAY v VACATION OR STAY-CATION

By Alan C. Porter



There's something comforting about the word, "Holiday", it sums up the essence of the seaside. Sun, sand, fish and chips out of newspaper and ice creams. It carried me happily through my formative years (mostly spent in Bournemouth). Then with progress and affluence fish and chips came dished up in a ghastly white pressed polystyrene container and the holiday became a vacation; a soulless word that conjures up nothing except busy airports, long waits and customs checks at either end of strange sounding places and even stranger smells.

Then just as I was getting used to vacation a new word has arrived on the scene. Not a holiday, not a vacation but a stay-cation! What sort of word is that? It's neither one thing or the other. I can't get excited over a stay-cation, it's got no pedigree.

I now refuse to have a vacation or a stay-cation, I have a holiday and just the sound of the lovely word fills my ears with the cries of wheeling gulls, waves on shingle beaches and memories of fish and chips out of vinegar soaked newspaper. Great!



JOHN H WALKER

**GARDEN
SOLUTIONS**

LANDSCAPING & GARDEN MAINTENANCE

EST. 1999

TEL: 01454238865

MOBILE: 07974933398

Garden makeovers. Lawn cutting and Maintenance, Turfing, Patios, Ponds, Water features, Decking, Hedge Cutting Fencing, All shrub work, Clearing, Driveways, & Planting.
All aspects of garden work undertaken

**TAKING NEW BOOKINGS
FOR THE LAWN MOWING
2012 SEASON NOW.
CONTRACT BASIS OR ONE OFF.**

DOCTOR
DRIVE

school of motoring

FREE Theory Preparation

Block Booking Discounts

Competitive Rates

High Pass Rate

Start Learning at 16

Pass Plus = Cheap Insurance



For More Info Contact Chris

01454 238693

07970 274373

www.doctordrive.net

Hawkesbury Cricket Club—May Fixtures

Below are the fixtures for June. Why not pop along and watch either the *Hawkesbury 1st XI* or the *Gentlemen of Hawkesbury* in the beautiful surroundings of the cricket ground?

Come along to support the boys and enjoy top quality cricket in your own village.

Date	Team	Location	Versus
5th May	1st XI	Home	Bharat Sports
12th May	1st XI	Away	Avening & Cherrington
19th May	1st XI	Home	Cirencester
26th May	1st XI	Away	Haresfield
26th May	Gentlemen of Hawkesbury	Home	Hillesley
30th May	Gentlemen of Hawkesbury	Away	Old Sodbury

Hawkesbury Cricket Club

Junior training has started!
Training sessions at Hawkesbury's
cricket ground are as follows:-

U9/U11/U13 - Mondays 6.30 - 8pm

U15/U17 - Wednesdays 6.30 - 8pm

Subs are held at last year's fee of £20/child.

Please contact Sara White
(01454 238554, sarawhite@uwclub.net),
for a registration form or further details.

Here's to a long, dry, cricket-filled
season!

Sara White



RBS Six Nations Competition



Top 10 Results

1 st	Dave Anderson	127
2 nd	Nathan Flye	123
3 rd	Nick Jones	120
4 th	Howard Bradley	119
5 th	Andy Flye	117
6 th	Mike Gardener	116
7 th	Barrie Hope	115
8 th	Martin Gardener	114
9 th	= Dave Beeley	112
9 th	= Keith Burgham	112
9 th	= Tim Pearce	112

Dave has kindly donated £25 of his
winnings to enhance the monies
given to the Pensioners Christmas
Fund

Mick Bendeaux

Hawkesbury Cricket Club

Egg Catching

Coombe Farm -

Friday 8th June



Pop the date in your diary now!

DEB'S CELEBRATION CAKES

Individually designed cakes for
weddings and special occasions

Workshops - have a go yourself
and learn a new skill

Please contact me to find out more,
discuss ideas or see my work

DEB PIDSLEY 01453 834394
07890292125

www.debscelebrationcakes.com

FIREWOOD

Dry seasoned hardwood logs,
delivered cut and split to your
requirements.

We also sell kindling and coal.

Lower Kilcote Farm
Call Steve Thompson
Home: 01454 232941
Mob: 07974 194012

NE odd jobs

A fully insured, professional
and reliable service

- Garden maintenance
- Weeding, grass cutting
- Cleaning
- Painting

... as well as all those other little jobs
you just never seem to get around to.

Call: Nicola Evered

07947 072780 or 01453 844124



Gardener's Delight



Dan Dare



Annie Get your Gun



Eager Bezar



Golden Gav



Flash Gordon



Hopes Eternal

CURRY & RACE NIGHT

Hawkesbury Cricket Club

@ Village Hall 7.30pm

Sat 23rd June 2012

Come and have some fun.

Have a flutter and eat some fabulous curries!



Bernie's Journey



Salty Sea Dog



Sheephead



Subsonic



Down Deano



Tim Pan Alley



Georgie Boy



Peter's Purse



Joss the Boss



Barry's Belter



Ireland's Glory



Blackwell Lad



Alwyn's Advance

Avon

Am I the only person who objects to receiving mail addressed to me in the county of Avon?.

South Gloucestershire must have been in existence for at least 15 years, surely new data bases must be available by now. I have recently started to return all mail containing the word Avon; perhaps if more of us did this, we can finally get rid of this fictitious county.

Terry Gardener.



CHIM-CHEROO
PROFESSIONAL CHIMNEY SERVICES

- Woodburners, open fires, Agas etc
- Member of the Institute of Chimney Sweeps
- Fully insured
- CCTV inspections
- Blockages removed
- Safety certificates issued
- No mess

Hire a lucky sweep for your wedding!

Richard Stone
07805 330 961
chimcheroosweep@yahoo.co.uk
24 Gloucester Street, Walton-under-Edge, Gloucestershire, GL12 7DN

Chartered Physiotherapist

Diagnosis & treatment of muscle and joint problems.

Help following fractures and falls.

Stroke & MS rehabilitation & physical maintenance.

Registered with Health Professions Council.



Sarah Ward MCSP SRP

Contact: 01666 84019

Luckington, Wilts.

Getting in first before the garden pests arrive

There is always information around, about what to do when garden problems have been noticed, such as bugs and disease, but the following tips may help to pre-empt some of those situations before they arrive and get the cure in first!

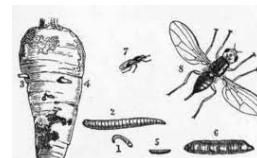
Greenhouse Aphids (greenfly, whitefly and blackfly)

A pot of marigolds, inside the greenhouse, either side of the door has been for me, a good deterrent, as the bugs don't seem to like the smell and stay away from the plants therein.



Carrot fly

Carrot fly lay their eggs on the surface of the soil, and when the grubs hatch, they burrow down and into the carrots leaving a rusty brown scar which makes the root inedible. The word, fly, is a misnomer however, since this bug is only capable of hopping and then only up to a height of about 18 inches. There are several ways of using this information to keep the fly out. A 2 feet high polythene barrier can be built around the carrot row or seed can be sown in tubs or troughs of that height. There are several carrot varieties which the fly is not keen on, such as Sytan, ResistaFly, or Flyaway which are not 100% guaranteed, but certainly less likely to attract the problem. Companion planting can also be successful, where a row of garlic or onions is planted next to the carrots in the hope that the strong smell of the other plants will confuse the fly. It can also help to sow seed fairly sparsely to avoid having to over - thin the row and attract the fly with the smell of fresh carrot.



Cabbage white butterfly

There is really no point in sowing a crop of brassicas if precautions against this pest are not taken. There are sprays available which will do the job, but for those who wish to avoid insecticides the only other method is to net the plants. The normal tendency is to buy one of the nets available in the garden centres, but the usual type available do not present sufficient protection, as the net gauge is too big. "Gardening Naturally", an online company, have for sale, a butterfly protection net which is reasonably priced and should last for years



Potato Blight

This is the disease which wiped out whole crops in Ireland and precipitated the famine in the 1800's. The blight is an air - borne fungus which can also affect tomatoes. First symptoms are brown freckles on the leaves and a yellowish border stretching away from the brown patch. Unchecked, the potato stems become soft and slimy and rot, with the rot spreading down to the crop in the ground. If this stage has been reached, it is sometime possible to save the crop by cutting of the tops of the plant before the rot reaches the potatoes but the likelihood is that the crop will not have matured and will be very small. The Soil Association (the organic growers' rule - makers) advocate that blight can be treated with a spray of Bordeaux mixture (copper sulphate), but I personally don't know how effective this is. What I always use and would recommend is a compound made by Bayer, called Fruit and vegetable disease control Protective fungicide, which has replaced Dithane 945 which was the old standby. I begin spraying in the middle of June and repeat about 3 or 4 times at fortnightly intervals



Leek Moth

Last year, I lost two complete crops of leeks, to a bug which I'd never seen before and which I now realise was Leek moth.

The moth has, this year, entered the R.H.S. top ten of garden pests It lays its eggs in the folds of leeks and when they hatch, the grubs burrow into the leeks and will wreck a crop in a very short time, There is not a spray available to the gardener at present, so if a crop is going to get a chance of maturity, it must be protected from the outset with garden fleece or enviromesh and this must be tucked into the soil with no gaps, which would allow the moth in.

Whilst not wishing to spread alarm and despondency, I think being prepared for these problems is preferable to losing a crop and not having time in the garden year to recover it.

Brian Noble

Garden Projects undertaken
Patios & Ponds built
Interior & Exterior painting
Tiling & Carpentry



Barry Yuill 01454 238162
Mobile: 0779 438 5352

TV or Satellite Problems?

Digital Switchover, Tuning,
Cabling, Freeview, Freesat,
Multiroom/Sky Eye, Internet TV

Free estimates
Friendly local service
07710 794314 or 01454 238418

McTimoney Chiropractic Tolsey Surgery, Sherston

Treating back & neck pain,
migraines, sports injuries & more

Emma Newby BSc MMCA

01666 841 402

www.mctimoneychiro.co.uk

SEVERN VIEW FARM
— Sold on Taste —

Open Day on Saturday 14th April

It had to happen one year I guess and this year, the weather was a little against us. Fortunately it stayed dry but it was decidedly chilly with a North Easterly breeze. Despite this we had a fantastic turn out and I believe our visitors had an enjoyable afternoon.

Regulars will know that we focus on enabling people to handle the animals and cuddling a lamb or holding a baby duck is always a highlight for many. So too the more unusual beasts that Jungle Talk (Seb Miller) brings along. Unfortunately the weather was too cold for most of Seb's beasts but there were still some exotic animals to get to know. The Hawk and Owl Trust also brought more birds than usual with them. It is such a treat to see the owls up close and marvel at the patterns on their feathers.

People seem to really enjoy our "have a go" attractions so the archery, Wellie Wanging and Splat the Rat were as popular as ever. The consensus is that the younger you are the easier it is to catch the "Rat". The Welly Wanging was hard fought this year in Class One (Big People) where after several goes a winner was finally declared.

A heavily pregnant sheep in a fashionable harness drew much attention particularly from our female visitors. There was speculation about how many she might be carrying. I thought three but was proved wrong at about 1.00am on Monday 16th. It turned out to be just two ENOURMOUS ram lambs.

The competition entries were again of an incredibly high standard. The full list of results appears elsewhere in the magazine.

Thanks must go to our army of volunteers who get stuck in both before and after the event as well as on the day. Thanks must also go to Dave and Beryl Parsons for the loan of their field for parking. This really does ease congestion and makes access much safer.

A big thank you to all those who helped us with the event, and to all those who attended, for making such a large gathering safe and fun. We couldn't do it without you.

Pauline Dixon
Tel: 01454 299236

Email: pcdixon@waitrose.com

Follow us on

www.severnviewfarm.com



@SevernView

<p>MADE TO MEASURE</p> <p>CURTAINS & BLINDS</p> <p>CHOOSE IN THE COMFORT OF YOUR OWN HOME</p> <p><i>Large Selection of Fabrics</i> Full range of blinds: Verticals, Venetians, Rollers, Velux Blinds Tracks & Poles – Customer's Own Fabric Make Up Measuring & Fitting</p> <p>Call Grant on: 01453 521751, 07799 822691 or Email: gb_at_home@yahoo.co.uk For a no obligation quote</p> <p><i>A local service with 20 years experience</i></p>	 <p>at home CURTAINS & BLINDS</p> <p>Charfield, Wotton-under-Edge</p>	<p>JOHN DAY ENGINEERING</p>  <p>All types of mowers serviced & repaired Free local collection & delivery All fabrication & wrought iron work undertaken Gates, fencing, lighting etc.</p> <p>Please tel: 01454 238365 or 07947 636308</p>
---	---	--

SEVERN VIEW FARM

— Sold on Taste —

Severn View Farm Open Day Competition Prize Winners

Class 1a - A picture of a chicken (for those aged up to 5 years)

1st – Ella Matthews

2nd – Yasmin (sorry no surname available)

3rd – Leo, Mae and Gwennie Farahar – too tricky to choose between them!

Class 1b - A picture of a chicken (for those aged 5 to 7 years)

1st – Dulcie Iddon

2nd – Lottie McGrath

3rd – Joe Sanford

Class 2 Drawing or model of a pigs (for those aged 8-10 years)

1st – Alex Flower

2nd – Lucy (sorry no surname available)

3rd – Joshua D

Class 3 - A design for an advertising sign for the Farm (for those aged 11-13 years)

1st – Ellie Gardner

2nd – Lizzie Mantle

3rd – Shaun Thompson

Wellie Wanging

Big People – Tim

Medium People – Mandy (we hope you all know who you are!)

Small people – Emma

A few prizes remain to be collected. Please call into the farm any Saturday or Sunday. Some of the drawings are also still here and can be collected if wanted.

Dog Harmony

Dog/Puppy Training, Behavioural Problems
Homevisits, Socialisation,
Dog Walking Service

Contact Je-An: 01454 238145 / 07540336508

email: info@dogharmony.co

www.dogharmony.co



Empathy Clinic

To book a session or for further information contact Vicky Peirce:

v.pierce@googlemail.com

www.cometolife.org

Tel: 01454 238712

Fully confidential sessions.

Queen Elizabeth II -
Diamond Jubilee

1952 - 2012

Design your Place Setting
for the

Diamond Jubilee "Big Lunch"

on

Sunday 3rd June at 2:30pm

Open to ALL ages - from tots to adults.

Make it from paper, cardboard, recycled material.

Knit, crochet, sew or weave it.

Carve it from wood, weld it in metal, create a mosaic.

Just use your imagination and come up with your own original design.

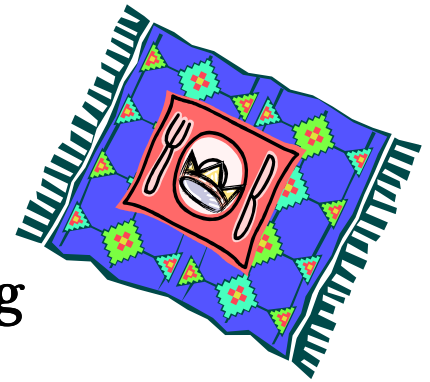
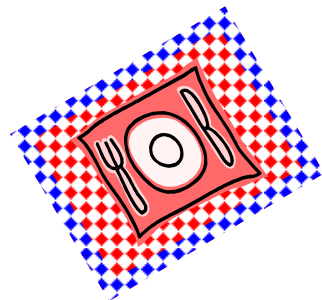
Free to enter!

Prizes will be awarded
for the following categories:

Under 10 years.

10 to 15 years.

16 to 115 years..



We will need the following details from you on the day:

Name:
Address:
Tel:
Age (if under 16):

Sponsored by Hawkesbury Parish News

The Farm Shop at Hawkesbury

France Lane Farm

Succulent Pork, Lamb, & Beef

"traditionally reared traditional breeds produce the very best traditional taste"

Prime Aberdeen Angus Beef

from our pedigree herd
available from Saturday 19th May

A J Morgan Farm Produce 01454 2383215/07929 947149

90th Birthday Celebration

Mrs Winnie Duncan would like to thank all of her family and friends for their wonderful surprise birthday party last month.

I loved seeing so many of you there, I had no idea what was being planned.

Special thanks must go to Iris, Arthur and Chris who planned it all and to everyone who contributed in any way.

Best wishes

Win Duncan



 **R&B** VEHICLE SERVICES
Est. 10 years

01454 238700

REPAIRS, SERVICING
DIAGNOSTICS, BATTERIES
TYRES, EXHAUSTS
FOR CAR, 4 X 4 & LIGHT VANS
FREE LOAN CARS AVAILABLE
YOU CAN NOW BOOK YOUR MOT
ONLINE AT
www.mottetbury.co.uk



SAY 4 KNOCKDOWN
1 MILE FROM WESTONBIRT ARBORETUM

COST EFFECTIVE MAINTENANCE AT A FRACTION OF DEALER PRICES
CALL RICHARD OR BEN FOR FRIENDLY, RELIABLE SERVICE

- Physiotherapy
- Homeopathy
- Podiatry
- Chiropody
- Chiropractic
- Aromatherapy
- Reflexology
- Acupuncture
- Holistic Massage
- Sports massage
- Nutritional Advice
- Pilates Exercise Classes

TOLL HOUSE CLINIC

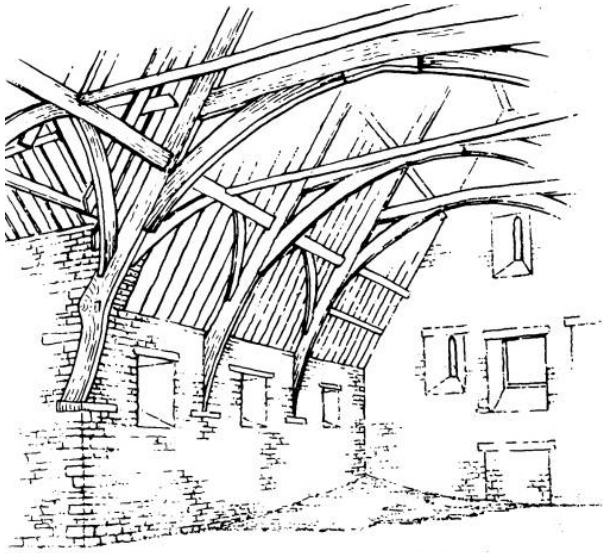
Freephone 0800 0936 362 Telephone 01454 32 22 32
www.tollhouseclinic.co.uk

47 Horse Street, Chipping Sodbury, BS37 6DA

Hawkesbury Local History Society

WINTERBOURNE BARN

is unique
and we have the opportunity of visiting it
on
Friday 18th May at 6.30pm



The barn, the central feature of a group of medieval buildings set apart from the main village, is a building of national importance.

Commissioned by Thomas de Bradeston, Lord of the Manor of Winterbourne, it was built in 1342 in true cruck tradition. Most large barns of this type belonged to monastic estates, and nationwide there are only three barns recorded as having

been built by lay 'gentry' families. Winterbourne Barn is the sole survivor of these.

Rescued from almost imminent collapse by South Glos Council in 1998, the barn has undergone an extensive programme of restoration and stabilisation.

"Winterbourne Barn was not just a workaday shed but was a work of grandeur designed by an architect. It will have seen not merely storage and threshing of corn, but church ales, theatricals, wedding feasts and all manner of rustic festivals" (Prof Oliver Rackham OBE).

Cost £2 per head (payable on the evening).

Parking available on site (Church Lane, Winterbourne BS36 1SE - turning off the B 4058).

Map on www.winterbournebarn.org.uk

THE HAWKESBURY SHOP

HIGH STREET, HAWKESBURY UPTON, TEL. 01454 238639



HOBBS EACH DAY

Hobbs Bakery will be delivering fresh each day from Monday April 24th – As you know Hobbs have a great variety of delicious breads – if you would like to order any specific breads that is no problem just request from any of the staff.

NEW EXCITING REWARD SCHEME!!

The Loyalty cards have taken off – had lots of great feedback many thanks!

PLEASE WATCH THE BLACKBOARD FOR UPDATES!!

Concluding the extracts from Arthur Mee's 'Gloucestershire' published 1940

It is into the tale of the Jenkinsons that the two pathetic stories of this village come. One is of a mother who died never knowing that her little one was to be Prime Minister; the other seems something like the story of Romeo and Juliet.

The most famous Jenkinson was the second earl, Sir Robert, who lies here with his mother. He was only five weeks old when his mother brought him home to Hawkesbury from London, (to the Manor which was then opposite St. Mary's Church), an anxious journey in those days for a mother with her child, and she was but 19. Too anxious the journey was for her, for she never saw her home again. Her little Robert grew up and went into Parliament, and when a madman's pistol in the House of Commons shot down Mr Spencer Percival, Sir Robert became Prime Minister in his stead, and was Prime Minister at the time of Waterloo.

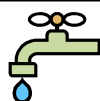
The other story is of a daughter of the Jenkinsons who lived in the ancient manor house, of which nothing now remains but a few crumbling stones. The Jenkinsons were Protestants, and in the neighbouring village of Horton lived the Roman Catholic Pastons. It happened that an attachment stronger than the bonds of faith developed between young Miss Jenkinson and young Mr Paston, and a feud grew up between the houses, for if the lovers could forget their differences, the parents could not, and in the end young Paston was forbidden to enter the Jenkinson home. The day came when the lovers were to say farewell, and like Juliet to her Romeo, she looked out from a window and declared to him her undying affection. Then she leaned too far and fell out, and all was over.

One more Jenkinson memorial is in the church; it is to John Banks Jenkinson who fell as a captain in the Rifle Brigade when the Great War was but a few days old. A stone tablet in the wall tells us also of Potter Cole, the fine old vicar who may have christened the boy who was to be Prime Minister. He lived through nearly the whole of the 18th Century and into the 19th and practically all his working life he spent in this village preaching for seventy years. In all our ten thousand churches we have come upon only one or two longer records of service.

An inadvertent decision...

There were three people hanging onto a rope that came down from a helicopter. There were two men and one woman. They all decided that one person should get off because if they did not, the rope would break and everyone would die. No one could decide who should go. So, finally the woman gave a really touching speech, saying how she would give up her life to save the others, because women were used to giving up things for their husbands and children, and not receiving anything in return.

When she finished speaking, both men clapped.



SPA
PLUMBING SERVICES

Steve Duke

23 The Buthay, Wickwar, S.Glos, GL12 8NW
t: 01454 299993 m: 07881 555883

TREE TRIMMERS

PROFESSIONAL TREE SERVICES

Our qualified and insured arborists undertake all aspects of tree, hedge and shrub work
For a free, written quotation and advice please call
01454 322823
07905 578993 or 07854 258341
Covering all of the Hawkesbury Parish area

HAWKESBURY HORTICULTURAL SHOW 2012

Here is a list of all the classes for the Fruit, Flowers and Vegetables sections at this year's Horticultural Show (Saturday 25th August) They have been made available so that everyone is aware of the range of classes that are available in which to exhibit their produce. The full show schedule containing details of all the horticultural classes, the Domestic and Children's classes, as well as rules, information about the awards and also the official entry form, will be available at the end of June.

SECTION 1 VEGETABLES

Class Description

- 100 Potatoes, round white, 4, on cardboard plate
- 101 Potatoes, long white, 4, on cardboard plate
- 102 Potatoes, part-coloured, 4, on cardboard plate
- 103 Potatoes, coloured, 4, on cardboard plate
- 104 Potatoes, black kidney, 4, on cardboard plate
- 105 Potatoes, collection, 4 varieties, 4 of each
- 106 French beans, 6 pods
- 107 Kidney (runner) beans, 6 pods
- 108 Broad beans, 6 pods
- 109 Peas, 6 pods
- 110 Onions, large, 6, from seed, suitably presented
- 111 Onions, sets, 6, suitably presented
- 112 Onions, small, 6, each under 250g, suitably presented
- 113 Pickling shallots, 10, to pass through 30mm ring
- 114 Culinary shallots, 10
- 115 Collection, 5 each of small onions (class 112), culinary shallots (class 114), pickling shallots (class 113), in a tray maximum size 45cm x 30cm
- 116 Vegetable marrows, 2, maximum body length 38cm
- 117 Cabbage, 2 heads, at least 5cm stalk, some outer leaves may be trimmed
- 118 Cauliflower, 2 heads, with 5cm stalk
- 119 Round beetroot, 3, tops trimmed to 10cm (not tied together)
- 120 Long beetroot, 3, tops trimmed to 10cm (not tied together)
- 121 Long carrots, 3, tops trimmed to 10cm
- 122 Carrots, other than long, 3, tops trimmed to 10cm
- 123 Parsnips, 3, tops trimmed to 10cm
- 124 Turnips, 3, tops trimmed to 10cm

Class Description

- 125 Round lettuce, 2
- 126 White or red celery, untrimmed tops, trimmed base
- 127 Tomatoes, 6, with stalk, on a cardboard plate
- 128 Cherry tomatoes, 10, on vine(s), on a cardboard plate
- 129 Sweet peppers, 3, with stalk, on a cardboard plate
- 130 Cucumbers, 2, with 1.5cm stalk
- 131 Collection of salad vegetables, 3 varieties from lettuce, tomato, radish, cucumber, peppers and beetroot, box maximum size 45cm x 30cm
- 132 Blanched leeks, 3, cleaned and untrimmed
- 133 Pot leeks, 2, maximum 15cm from base plate to first leaf joint
- 134 Any other vegetable not previously listed, at least 3
- 135 Collection of vegetables, 6 types, no tomatoes, exhibit maximum 0.75m²
- 136 The Hawkesbury Onion (Cottagers only)
One onion, to be judged on size, shape and quality
- 137 New Entrant's Garden Collection, 3 varieties from carrots, beetroot, runner beans, onions, potatoes, 3 of each, cleaned and suitably presented in a seed tray or box max 40 x 25cm. ONLY OPEN TO COTTAGERS WHO HAVE NOT EXHIBITED IN SECTIONS 1, 2 OR 3 BEFORE.

SECTION 2 FRUIT

Class Description

- 201 Cooking apples, 6, presented stalks downwards
- 202 Dessert apples, 6, presented stalks downwards
- 203 Plums, 6, not greengages, with stalks
- 204 Dessert pears, 6, with stalks

Class Description

- 205 Plate of soft fruit, 10 berries, in a single layer
- 206 Any other fruit, 6

SECTION 3 FLOWERS

Important notes about classes 301-329:

- (1) *Pot plants should be presented only in the pot in which it has been grown. All pot measurements in this section refer to the diameter of this plant pot.*
- (2) *(2) For large blooms and plants in pots over 15 cm diameter, please specify on entry form how much space is required (50cm x 50cm maximum).*

ClassDescription

- 301 Flowering plant, *pot 15cm or less, variety other than those listed below*
- 302 Flowering plant, *pot over 15cm, variety other than those listed below*
- 303 Foliage plant, *pot 15cm or less*
- 304 Zinnias, 5 blooms
- 305 Dahlias, 3 blooms (*not pompoms*)
- 306 Cactus or semi-cactus dahlias, 3 blooms
- 307 Pompom dahlias, 6 blooms, maximum 5cm

ClassDescription

- 308 Dahlia, 1 single specimen bloom
- 309 Ball dahlias, 3 blooms
- 310 Asters, 5 blooms
- 311 Rose, 1 specimen bloom
- 312 Roses, cluster, 3 stems
- 313 Roses, HT, 3 stems, 1 bloom on each
- 314 Pelargonium (geranium) *in pot up to 15cm*
- 315 Fuchsia, single bloom, *pot up to 15cm*
- 316 Fuchsia, single bloom, *pot over 15cm*
- 317 Fuchsia, double bloom, *pot up to 15cm*
- 318 Fuchsia, double bloom, *pot over 15cm*
- 319 Cut flowers in vase, annuals or perennials, *minimum of 4 varieties*
- 320 French marigolds, 5 stems or flowers
- 321 Gladioli, 3 spikes, 1 or more varieties
- 322 Pansies, 6, 1 or more varieties, not Violas
- 323 Antirrhinums, 6 spikes
- 324 Spray chrysanthemums, 3 stems, 1 or more varieties
- 325 Sweet peas, 9 stems, 1 or more varieties
- 326 Begonia, *in a pot*
- 327 Cactus(i) or succulent plant(s), *pot up to 15cm*
- 328 Hanging basket or container, *maximum 35cm diameter to be viewed all round*
- 329 Any other cut flowers, 5 stems, one variety

There are so many classes – everybody should be able to find something in their garden or allotment, which could be entered. Please don't be put off because you thinking that you couldn't win. The marquee looks at its very best if each class is packed with entries. We would rather have 10 entries from people hoping to win rather than 2 high quality entries from people expecting to win, because there is no competition. Keep the regulars on their toes, lets have some new exhibitors this year and remember – “You don't win it if you're not in it” (or something like that!)

The Hawkesbury Show Committee

LENT LUNCHES

Lent Lunches raised £233, which was very good as we did not have very many people able to come. A very big thank you to all who helped by making soup, bringing rolls and fruit – and of course those who came to eat it! We hope you all had a peaceful and Happy Easter.

From: Hawkesbury's three churches





Hawkesbury CE VC Primary School
Hawkesbury Upton, Badminton, South Glos GL9 1AU

STARTING SCHOOL OPEN MORNING

Prospective parents and carers are warmly invited to our open morning for the opportunity to meet the children and staff and view our school.

TUESDAY 26TH JUNE 2012
between 9am - 10.30am

We offer:

- A high standard of education
- Small class sizes
- A caring, friendly secure environment
- Excellent facilities including a swimming pool
- Superb grounds
- Before and after school care

EVERYONE WELCOME!

*If you are unable to attend our open day, but wish to visit another time or would just like more information please ring
01454 238629*

Friends of St Mary's



Forthcoming events for 2012

May 27th – St Mary's Church 6pm Choral Evensong, 7pm AGM in church, swiftly followed by drinks at Church Farm House.

June 30th – Jazz Afternoon. Join us in the gardens of Church Farm House (by kind permission of Lisa White) for a lazy afternoon of jazz. Look out for more details in next month's magazine.

August 25th – Show Day Pimms Tent

November 17th – The Gold Ball

Membership of the FOSM at the moment still costs only **£5** per annum for single or **£7.50** joint, **but this will increase at the AGM this year.** Life membership is £100 (£150 joint). Contact treasurer Neil Fozard (238281) if you would like to join and help preserve our beautiful, historic church.

Pauline Setterfield
238307

Church Services in May 2012 For St. Mary's and the Methodist church

Date	Time	Service	Readers	Readings	Sidesmen
06th May	0945 am	Morning Praise - Communion	T.B.A.		P. Broad
13th May	1000 am	Methodist Church Sunday School			
	6 pm	Evensong - Rogation Sunday	M. Benry G. Morgan	Acts Ch 10 v 44 - end John Ch 15 v 9 - 17	B. Stephens
20 th May	0945 am	Morning Praise	T,B A.		A. Craig
27 th May	1000 am	Methodist Church Sunday School			
	6 pm	B.C.P. Communion - Pentecost Friends of St Marys A.G.M.	W. Fairney J Gardener	Acts Ch 2 v 1 - 21 Romans Ch 8 v 22 - 27	S Bishop
03rd June	10.30 am	Diamond Jubilee Celebration			H. Rogers
10th June 6 pm		Evensong	J O'Brien S Herod		D Musty

If you are unable to attend please telephone Linda Fairney: 01454 238553
Should you wish to speak to Revd. Alveen call: 01666 890 548

Church Cleaners:

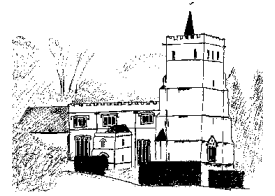
Julie Gardener
Vicki Rispin

Church Flowers:

Ella Wells
Jane Robertson

Please note all the different service times

St Mary's Church News



Churchwardens Mrs Linda Fairney 238553 & Mrs Mary Davies 238657
Keys for cleaners/flowers/church sitters please contact Mary Davies 238657 if possible
the day before to arrange for collection.

"Everyone who calls on the name of the Lord will be saved." How, then, can they call on the one they have not believed in? And how can they believe in the one of whom they have not heard? And how can they hear without someone preaching to them? And how can they preach unless they are sent? As it is written "How beautiful are the feet of those who bring good news!" Romans 10 : 13 - 15

The sun shone on our procession down the hill on Palm Sunday, as we remembered Jesus' triumphal entry into Jerusalem, with donkey and palms and singing, and then, less than a week later, we started to commemorate the events of Easter at a series of thoughtful services, sharing with the other parishes in our group. Maundy Thursday saw us at Leighterton with our choir, and we remembered Good Friday in a series of quiet reflections at St Mary's, led by members of the congregation, before we climbed the hill for the traditional service at the foot of the Cross. We thank Sharon Gray for organising Messy Church on Easter Saturday; attendance was disappointing, but those who were there enjoyed themselves. On Saturday evening we lit the Easter Fire at St Mary's in a short celebration involving a brazier and small lanterns, before processing into the church to light the Easter Candle, representing the Light of Christ. The Easter Day Eucharist was celebrated at Leighterton, followed by Easter Songs of Praise at St Mary's in the afternoon

This was a busy programme, and we thank the Revd Alveen for all the thought and hard work she put into it, and for introducing new ways of worship. We also thank the people who made the church look so beautiful: Lisa White and family, Barbara Rutley, Betty Salthouse, Linda Fairney and Mary Beresford, and the school for their Easter reflections. It is always a joy to have Pauline Setterfield and the choir with us, and we thank them too for being at a number of the services. Finally, we thank Sir John Jenkinson for letting us use his field for car parking

The annual meeting of the church has not yet taken place at the time of going to press, but it is an appropriate time to thank all those who contribute to the organisation of services, such as sidesmen and readers, the members of the Parochial Church Council and the Local Ministry Team, and our hardworking church wardens. Without these people, St Mary's would not be the welcoming, beautiful church it is, and we thank them

We also want to record our thanks to Jon Crow, who has been playing the organ for us for a number of years, and is now leaving to work in Germany. His music has been a delight, and has added greatly to the richness of our worship. We shall miss him, and we wish him well in his new post, looking forward to seeing him again in the future

We apologise for the error in the table of church services for April, which may have caused some people not to turn up for Morning Praise on 15 April, but to arrive for Evensong instead at 6.0 pm. The calendar becomes complicated around Eastertide!

Dates for your diaries

Thursday 17 May - Ascension Day – details to be announced.

Jennifer Oldershaw

How to get inner peace

A friend sent me an article that said the way to achieve inner peace is to finish things you've started.

It's definitely working for me. I am now making a point of always finishing whatever I started and I think I am well on the way toward finding inner peace.

Because I care, I'm passing this wisdom on to you. Here are the things I finished today:

- Two bags of crisps
- A strawberry cheesecake
- A packet of chocolate biscuits
- A bottle of fizzy drink
- A small box of chocolates I found under the sofa from Christmas.

I think I feel better already!



Dear All

I have just been forwarded this letter from the Assistant Diocesan Secretary for Gloucester asking for support, via a petition to the government, to overturn the recent Budget's plan to withdraw zero rating for approved alterations to listed churches. Do please read the letter and add your support by signing the petition. Any future projects we have to restore our beautiful St Mary's Church could otherwise cost an extra 20%. If you have time to lobby Steve Webb/your MP too, then that would be helpful.

Thanks for any support you might be able to give.

Best wishes

Pauline Setterfield

Dear friends

Once again we are asking clergy and churchwardens to support a campaign on VAT for our listed churches.

You may recall a couple of years ago there was a major campaign, which succeeded in retaining the Listed Places of Worship Scheme for reclaim of VAT on repairs to listed churches. Thanks to major support from the parishes, we succeeded, though unfortunately the Government have imposed financial restrictions on the Scheme.

Now we have a different issue, which is the totally unexpected **withdrawal of zero rating for approved alterations to listed churches**. This was brought forward in the recent Budget, and has understandably caused dismay in parishes, which were planning new loos, kitchens, meeting rooms or indeed new heating or lighting schemes, to quote just some of the projects, which have now suddenly gone up by 20%.

There is still a chance that the Government may respond to pressure, and there are two ways in which you can help. But we only have till 4th May!

The simple way is to respond to the E-Petition <http://epetitions.direct.gov.uk/petitions/32229>

Please do it **NOW** and encourage others to do the same.

Please also consider writing to your MP. I attach a suggested model letter. It is obviously best if you can personalise it as much as possible. Please refer to any recent or planned improvements to your church, so as to demonstrate the kind of project, which is now at risk.

If you need to know the name and address of your local MP, this can easily be found on <http://findyourmp.parliament.uk>

If there is anything I can clarify, then please do not hesitate to get in touch. Please do something to assist the campaign – but remember, time is short!

With thanks for your help

Jonathan MacKechnie-Jarvis (Assistant Diocesan Secretary)



**COUNTRY
PROPERTY**

theauctioneer.biz
PROPERTY AUCTIONEERS

Nick Cragg FRICS FNAEA

01454 321339

Specialist Property
Sales Lettings Consultancy
South Gloucestershire

www.countryproperty.co.uk

ANTHONY HARCOURT
OSTEOPATH & ACUPUNCTURIST

No 3 Horse Street,
Chipping Sodbury
BS37 6DA

Tel: 01454 326256

THE METHODIST CHURCH

BACK STREET, HAWKESBURY UPTON



Services for May 2012

Sunday May 6th	9.45am	Morning Praise at St Marys
Sunday May 13th	10.00am	M Hilton <i>Sunday Club for children attending</i>
Sunday May 20th	9.45am	Morning Praise at St. Marys
Sunday May 27th	10.00am	Rev Paul Edwards – Holy Communion <i>Sunday Club for children attending</i>

Pay without working

In America, Pro athletes and coaches sometimes get something for nothing. Let's say a coach signs a 3-year contract, and the team agrees to pay him \$1 million a year.

But in his first season, the team is terrible and management fires him.

So, the coach leaves but still has 2 more years of pay coming to him.

He gets the next \$2 million without doing a thing!!

We as Christians have to be careful that we don't view our saving faith like that.

We must never think, "Hey, I'm saved.

I've got eternal riches coming my way. I don't have to do anything for God."

That's partially right but very wrong.

In one regard, our journey from here to heaven is paid for in full by Jesus' sacrifice.

There's nothing we can do to earn salvation. But there's another part of this that we must consider.

In Ephesians 2:8-9, after Paul clearly says that we do not have to "do" anything and that salvation is a "gift of God," he goes on. Verse 10 says we indeed have a job to do.

As believers, we are "created in Christ Jesus for good works."

God has tasks planned for us to do while we are on this earth—not to pay our debt but to honour our Saviour.

Life from here to heaven is not a vacation cruise—it's a wonderful privilege and calling to serve God.

*Rev Paul
Methodist Minister*



PUMPKINS NURSERY

Badminton and Tormarton

Nursery care and pre-school education catering for children aged 1 – 5 years
Open all year 8am – 6pm

Nursery Education Grant funded sessions available

Forest School sessions run at both settings

For more information or to request a prospectus contact Amanda Wallis on **01454 219400/218747**
Or visit our website: www.pumpkinsnursery.co.uk

DOLPHIN WATER SOFTENERS LIMITED

*Alderton 4, Priory Park, Priory Industrial Estate,
London Road, Tetbury, Glos. GL8 8HW*

- **Tablet Salt** - £8.25 per 25kg bag
- **Granular Salt** - £8.25 per 25kg bag
- **Block Salt** (Harveys & Kinetico) - £4.70 per 2 x 4kg blocks

Available for collection from 1-5pm Monday to Friday *or* delivery service available within a 10 mile radius of Tetbury
FOR MORE DETAILS – Tel: 01666 500065 Fax: 01666 504911

Email: ngjkind@btinternet.com

BETHESDA CHAPEL

PARK STREET, HAWKESBURY UPTON

Services for the month of May 2012

Sunday May 6th	10.30am	Mr & Mrs Gillard
Sunday May 13th	10.30am	Mr Robert Simpkins
Sunday May 20th	10.30am	Mr Mark Hearsom
Sunday May 27th	10.30am	Rev. P Hopes
<i>Sunday June 3rd - Joint service at St. Mary's church – time to be announced later</i>		

BETHESDA ADVENTURERS MEET DURING MORNING SERVICE

Tuesday May 1st – A Time of Worship and Prayer 7.30pm

Other Tuesdays 7.30pm – Bible Study / Prayer

Thursdays – A time of Prayer for Revival at 2.00pm

In 1847 Sir James Simpson was a doctor in Edinburgh when he discovered chloroform, one of the most significant discoveries in modern medicine! Some years later, after a lecture, a student came to him and asked, "What do you consider to be the most valuable discovery of your lifetime?" Dr Simpson answered, "My most valuable discovery was when I discovered myself a sinner and that Jesus Christ was my saviour!"

Paul, writing to the Romans in chapter 3 v.23 – "ALL have sinned, we all fall short of God's glorious standard." So how do we find forgiveness? Last month we celebrated Easter, when we remembered that Jesus died on the cross, shed his precious blood. He did this for you and me. In Acts 2 v.37 Peter was asked the same question. His reply was "Repent and be baptised, every one of you, in the name of Jesus Christ for the forgiveness of your sins" That is the answer the Bible gives!

M. C. Coates [Chapel Secretary]

Scams - clothing collections

(from South Gloucestershire Council Trading Standards)

Trading Standards have seen an increase in the number of complaints received about clothing collections within the district. Large numbers of leaflets are being dropped door to door requesting that householders donate unwanted clothing and other household items.

Recent leaflets imply that any donations will go to help the victims of disasters or to well known charities. Trading Standards strongly suspect that any donations are sold on for commercial gains and not used for charitable causes. We are also aware of some leaflets that contain false contact and business information.

Be suspicious of such clothing collections and remember that the only way to guarantee that donations benefit good causes is to only deal with charities that you can identify as genuine, or take your clothing direct to a charity shop.

Buskins Shoe Shop
Nailsworth

- Ladies shoes
- Mens shoes
- Bags & purses

Tel: 01453 836836
www.buskins.co.uk

MORGAN Plastering Services



INTERNAL/EXTERNAL
RENDERING
ALL FINISHES
COVING
DRY LINING
RELIABLE SERVICE
15 YEARS EXPERIENCE

Call now for a quotation
01454 850294
MOBILE 07909 937226

TRADITIONAL STONEMWORK & POINTING SPECIALIST

- Dry Stone Walling
- Brickwork & Blockwork
- Block Paving
- General Building
- Stone Tiling

STEVE GREEN

01454 238454 (after 5pm)
Mobile: 07813 245550



Electric Picture House

"Best Market Town Project"
South West Market Town Awards Scheme 2006

The Best Exotic Marigold Hotel, Cert 12A, 118 mins

For a disparate group of English pensioners (Judi Dench, Bill Nighy, Maggie Smith, Tom Wilkinson, Penelope Wilton, Celia Imrie and Ronald Pickup), retirement takes an unconventional turn when they abandon their homeland, enticed by advertisements for THE BEST EXOTIC MARIGOLD HOTEL, a seemingly luxurious sanctuary for "the elderly and beautiful" in Jaipur, India. On arrival, they discover that the hotel falls somewhat short of the romantic idyll promised in the brochure, but they are gradually won over by the ever-optimistic young manager Sonny (Dev Patel), and tentatively embark on a new adventure, finding that life can begin again when you let go of the past.

Full details: <http://www.wottoneph.co.uk/FS/BestExoticMarigoldHotel.html>

Friday	27 April	7:45pm	Saturday	28 April	7:45pm
Sunday	29 April	7:45pm	Thursday	03 May	2:00pm
Friday	04 May	7:45pm	Saturday	05 May	7:45pm
Wednesday	09 May	8:45pm	Tuesday	15 May	7:45pm
Thursday	17 May	2:00pm			

The Kid With A Bike, Cert 12A, 87 mins

When his father (J r mie Renier) abandons him, 11-year old Cyril (Thomas Doret) is taken under the wing of a hairdresser (C cile de France) and begins an obsessive search for a bicycle, his last link with his missing father. In French with subtitles.

Full details: <http://www.wottoneph.co.uk/FS/KidWithaBike.html>

Thursday	03 May	7:45pm	Tuesday	08 May	7:45pm
----------	--------	--------	---------	--------	--------

We Bought A Zoo, Cert PG, 124 mins

The fate of silent movie star George Valentin (Jean Dujardin), struggling with the advent of the talkies, is interwoven with that of Peppy Miller (Berenice Bejo), a starlet thrust into fame by the new medium.

Saturday	28 April	4:30pm	Sunday	29 April	2:00pm
Thursday	10 May	7:45pm	Saturday	12 May	4:30pm

Wotton Arts Festival - Diana Dors Double Bill

Is Your Honeymoon Really Necessary?, Cert 12A, 80 mins

An American soldier stationed in England is ready to go on his honeymoon with his new wife when his ex-wife, a gorgeous blonde, shows up and insists that they're still married.

My Wife's Lodger, Cert 12A, 80 mins

A soldier returning from the war finds his wife more interested in the new lodger than him.

Tuesday	01 May	7:45pm
---------	--------	--------

Departures (2008), Cert 12A, 130 mins

Daigo Kobayashi is a devoted cellist in an orchestra that has just been dissolved and now finds himself without a job. Daigo decides to move back to his old hometown with his wife to look for work and start over. He answers a classified ad entitled "Departures" thinking it is an advertisement for a travel agency only to discover that the job is actually for a "Nokanshi" or "encoffiner," a funeral professional who prepares deceased bodies for burial and entry into the next life. While his wife and others despise the job, Daigo takes a certain pride in his work and begins to perfect the art of "Nokanshi," acting as a gentle gatekeeper between life and death, between the departed and the family of the departed.

Sunday	06 May	7:45pm
--------	--------	--------

Coming Soon:

Opera/Ballet Season

Tosca (Opera) - 09 June
Carmen (Opera) - 30 June

Giselle (Ballet) - 16 June
Tales of Beatrix Pottter (Ballet) - 07 July

[Find us on Facebook - Electric Picture House](#)

[Follow us on Twitter - @WottonCinema](#)

Information is correct at time of going to press.

Please call for the latest details.

Wotton Electric Picture House
18A Market Street, Wotton-Under-Edge
Gloucestershire, GL12 7AE
01453 844601 - general enquiries
(during opening hours)
01453 844401 - 24 hour recorded message

What's on at Westonbirt — May

Free guided walks take place every Saturday, Sunday and Bank Holiday at 2pm, and 11am on Wednesday, from Easter to the end of October. Just turn up and take part! Individual themed guided walks are listed below.

The Meadow exhibition in Silk Wood — 1 March - 31 May

From 1 March until the end of May, Westonbirt Arboretum will host an exhibition of spring meadow photography by local photographer Barney Wilczak in Silk Wood.

Exhibition — Eeles Family Pottery

Wednesday 2 - Tuesday 8 May 10am - 4pm
Great Oak Hall. An exhibition of beautiful stoneware, porcelain and pottery handmade by this talented Dorset family. Free after admission. Further details from eelesb@aol.com or 01308 868257 or visit www.eelespottery.co.uk.

Charity event - Meningitis Trust Toddle Waddle

Saturday 5 May
The Meningitis Trust is holding a Toddle Waddle fundraising event at Westonbirt - and everybody's invited to join in. Contact Becky Jones on 01453 769023 or email: beckyj@meningitis-trust.org.

Silk Wood Spring Fair

Saturday 5 - Monday 7 May 10am - 4pm
The Downs/ picnic area
The fair will demonstrate and sell a range of timber and wood products produced from material cut as part of the project. Free after admission. More details from Ruth Goodfellow on 07794054623. www.ruthgoodfellow.co.uk/courses.

Chair Making Course

Monday 7 - Saturday 12 May
Make your own chair from freshly felled or 'green' timber over the course of six days. Working in the beautiful Silk Wood Barn under the tuition of three skilled chair makers, participants learn to use a pole lathe and hand tools to make their own elegant and strong chair. Cost - £275
Booking essential. Call Paul Hayden on 01373 836051 or visit www.greenwoodcourses.co.uk.

Walkactive Pace and Abs at Westonbirt

Tuesday 8 May - Friday 1 June 11am - 12pm
Join Joanna Hall every Tuesday and Friday for four weeks for a fitness and toning course around Westonbirt. Cost £166. Booking essential: See www.joannahall.com for further details.

Guided tour - Tuesday wildflower walks

8 May 10.30-12.30
Discover a succession of wildflowers through the season. Book in advance on 01666 880220. Free after admission.

Guided tour - Remarkable Rhododendrons

Saturday 12 May 11am - 12.30pm
Discover Westonbirt's fantastic rhododendrons and their links with the history at the arboretum. Book in advance on 01666 880220. Free after admission.

Westonbirt wood sales

Saturday 12 - Sunday 13 May 10am-1pm
Proceeds go to the Friends of Westonbirt Arboretum, so cash or cheques only please. Follow signs from the car park on arrival. Call 01666 880220 or woodsales@fowa.org.uk

Guided tour - Wildflower walks

Saturday 26 May 10.30am -12.30pm
Discover a succession of wildflowers through the season. Book in advance on 01666 880220. Free after admission.

DAN WHITEHOUSE

supported by JUEY

Sat 12th May, 8pm

at Under the Edge Arts in The Chipping Hall
Wotton-under-Edge GL12 7AD

Dan writes music steeped in timeless roots traditions, laced with lyrical twists that narrate modern life. Following on from his 3 EPs (The Balloon, The Bubble, The Box), his debut album is acoustic at heart, sensitively embellished with a creative band of musicians who add their distinctive sounds to Dan's muse.

"sensational" TOM ROBINSON BBC 6 MUSIC
"really, really gorgeous songs" JANICE LONG
BBC RADIO 2

"fresh and exciting" JEREMY VINE BBC RADIO 2
To book go to www.utea.org.uk or ring 07791323869

JUEY is a folky, bluegrass tinged, country singer songwriter playing the guitar, banjo and harmonica. Brought up on a musical diet of 50s and 60s rock and roll combined with country, bluegrass and cajun, then perhaps it was inevitable that a love for singing and playing music has created a live performance described by others as "one of those moments when I get goosebumps" (Paul Moss, BBC *Introducing*).

www.utea.org.uk

Diamond Jubilee Concert - Life of Handel

Sat 19th May

Wotton Concert Series presents a concert to celebrate the Queen's Diamond Jubilee: Life of Handel, Divine Music for Trumpets and Voices in St. Mary's Church, Wotton-under-Edge at 7.30pm.
WCS is sponsored by Alderley plc.

Book at www.wottonconcertseries.co.uk
or 014353 521 421

Sodbury Jazz Festival 2012 events

Tickets are now available for the two forthcoming jazz events presented by Sodbury Chamber of Commerce:

7 May - Brian Carricks's International New Orleans Band

Tickets: £12.50

Both events take place at Chipping Sodbury Baptists Church. Tickets can be purchased from Swagger in Chipping Sodbury High Street and at Rounceval House in Rounceval Street.

For further information please contact us or visit www.visitchippingsodbury.com

FREE SHOES TO BE GIVEN AWAY!!



Buskin Shoe Shop The Old George Nailsworth

Buskins is celebrating 10 years of trading & serving the community this year.

Supplying ladies and men's shoes, boots and sandals along with a fabulous selection of handbags and purses. We specialise in interesting casual comfort footwear.

We stock many brands and some that are suitable for wider feet and wearers of orthotics. Please come and have a look at our larger shop and extensive collection. Over 4,000 shoe sin stock!

Brands include:

Gabor	Rieker
Tamaris	Fitflop
Moshulu	Merrell
Joseph Seibel	Fly
and others	

10 FREE PAIRS OF SHOES TO BE GIVEN AWAY (up to the value of £60)

Please fill in your name, telephone number and email address below and pop it into Buskins shoe shop. We will draw out one name at the end of each month for the next 10 months for a free pair of shoes

Name:.....

Tel:

Email:.....

Best of luck and we look forward to seeing you!

Please tick the box if you do not wish to hear about Buskins offers

The 29th Nailsworth Festival

19 May 2012 to 27th May 2012

This will be the 29th Nailsworth Festival and, to mark the occasion, we are planning an extended Festival.

We are working closely with other local groups and organisations to make 2012 special.

www.nailsworthfestival.org.uk

Badminton Horse Trials

Thursday 3rd - Monday 7th May, 2012,
Badminton Estate

For more details, go to:

www.badminton-horse.co.uk

OPEN MORNING AT ROSE HILL WESTONBIRT PREPARATORY SCHOOL

Saturday, 12th May 2012: 09:30am – 12:30pm.

Rose Hill Westonbirt School is a day school near Tetbury for boys and girls aged 3 to 11. It is a full member of the Independent Association of Preparatory Schools (IAPS) and a member of Allied Schools.

The school's idyllic setting in 210 acres of beautiful rural park and woodland (shared with Westonbirt School, an independent boarding and day school for girls) allows pupils the freedom to play and explore in a safe and natural environment, further developing imagination and confidence.

For further information please contact our Registrar on 01666 881375.

District Councillor Report

Localism & Neighbourhood Planning

Under the Localism Act, the Council have agreed to move towards a decision making committee system rather than the Cabinet/Executive system which currently exists. The Committee system will mean that all 70 councillors are involved in decision making rather than the 1 or 7 cllrs currently making decisions. The new structure will be presented to the Annual Council meeting in May and start in early June.*

There have been excellent workshops on Neighbourhood Plans explaining how South Gloucestershire Council will work with parishes on their plans. They could be included in the SGC Special Development Plans, rather than go through the referendum process. Neighbourhood Plans are not to stop growth, but are for helping to define growth for the area and must include a great deal of local consultation, including a possible referendum.

Plans must be consistent with the Core Strategy the District Planning Framework. The SGC Core strategy is having its Examination in Public later in the month.

The National Planning Policy Framework has been announced; this is the reform of the planning system and is aiming to make the planning system less complex, more accessible, and offering protection to the environment and to promote sustainable growth.

Youth Consultation and the future of SGC are currently out for consultation, proposing big changes for Surestart and the Youth Service please refer to the South Gloucestershire Council website.

Local Traffic Management Schemes have been prioritised by the Frome Vale area Forum these are the A46 Sobury/Horton & Old Sodbury scheme.

Cllr Sue Hope
01454 238673

sue.hope@southglos.gov.uk
07860 239600

South Gloucestershire Community Awards

Congratulations to Yvonne Nettles, Mary Beresford and Louise Roberts, who were among the 28 winners of a Community Award. These people, who give up their time freely to help others and bring our communities together, were rewarded for all their efforts at a special ceremony attended by the Chairman of Council, Cllr Mike Drew and Dame Janet Trotter, the Lord Lieutenant of Gloucestershire.



Tommy Cooper's Secret Joke Files....

I'll never forget the time I fell out of a plane.

That's bad.

Not too bad... I had a parachute.

That's good.

Not too good...the parachute didn't open.

That's bad.

Not too bad...there was a big haystack on the ground below.

That's good.

Not too good...there was a pitchfork sticking up.

That's bad.

Not too bad...I missed the pitchfork.

That's good.

Not too good...I missed the haystack!

My brother used to work in the circus. They used to shoot him out of a cannon.

Was he hurt?

I don't know...they never found him!

I've just taken out a policy that states if I bang my head, they pay me a lump sum.



Hawkesbury Parish Council

During the meeting the following applications were discussed:

App. No.	Address	Description	Comments
PK12/0380/F	2 Fox Close Hawkesbury Upton	Installation of ground mounted solar panels	The Parish Council supports the application
PK12/0863/TCA	The Vicarage High Street Hawkesbury Upton	Works to 8 no Lime trees to remove Epicormic growth from the main stem (max diameter 25mm) Situated within the Hawkesbury Upton conservation Area.	The Parish Councillors comments with regards to this planning application " No objection ".
PK12/0924/F	Land at France Lane Hawkesbury Upton, Badminton	Erection of agricultural storage Building	The Parish Council objects to the size/footprint and height of storage building, it is distributionally large for the size of agricultural land available and also the visual impact.
s.12/0255 /FUL	Mounteneys Farm Chase Lane Wickwar Road Wotton under Edge	Erection of a community Scale Wind Turbines and Change of Use of Grassland to Access Track and Wind Energy Generator. Erection of Monitoring Plant for a Temporary Road.	The Hawkesbury Parish Council objects on "Visual impact and adverse impact on the ANOB".
s.12/0229/FUL Cherry Rock Farm Wickwar Road Kingswood	Cherry Rock Farm Wickwar Road Kingswood	Erection of a community Scale Wind Turbines and Change of Use of Grassland to Access Track and Wind Energy Generator. Erection of Monitoring Plant for a Temporary Road.	The Hawkesbury Parish Council objects on "Visual impact and adverse impact on the ANOB".
Planning Decisions			
PK12/0392/LB	Inglestone Farm Chase Lane Inglestone Common Badminton	Application to retain the works carried out for internal & external alterations including replacement of rendering with timber boarding, replacement windows. Installation of double leaf doors to south elevation and installation of en-suite. (Resubmission of PK11/3173/LB)	CONSENT subject to conditions

Dates for your Diary

Parish Council Meeting

The next Parish Council meeting will be held on Monday 14th May 2012 in the upstairs meeting room in the Village Hall at 7.30pm.

Contact details for Hawkesbury Parish Council via:

Hazel Jones
Parish Clerk
2 Fox Close
Hawkesbury Upton
GL9 1EQ

parishcouncil@hawkesburyupton.com

Cup Cake Decorating Parties

A fun alternative party idea. For groups of 6- 8 children. I come to you with all the equipment and materials needed, including the cakes!
In a one hour session they will have a go at making icing decorations, such as flowers, hearts and stars , piping, and using lots of sprinkles, baubles etc to design and decorate their own beautiful cup cakes.
Each child takes home a box of 6 cakes. £10/head



(Also a great idea for a grown up girls night with a difference! - it's amazing how artistic you can become accompanied by a glass of red! - £15/head for adults for a 2 hour session.)

For more information or to book a party see my website:

www.debscelebrationcakes.com or give me ring 01453 834394

Hope to hear from you soon

Deb Pidsley

Deb's Celebration Cakes



NWF Fuels

Wardle
Nantwich
Cheshire CW5 6AF

Telephone: (01829) 260900
Facsimile: (01829) 260138
www.nwffuels.co.uk

NWF Fuels have been providing quality fuel to homes and farmers for more than 50 years. We are now one of the country's leading independent fuel distributors and consistently meet our customers' demands for quality products at a competitive price.

Whether you need heating oil or tractor diesel year-round, we can help with a high level of personal service. Quality products, competitive prices and a professional response to customer service – that's the NWF Fuels promise.

WHERE PEOPLE MAKE THE DIFFERENCE

PHONE DAWN STARLING AT YOUR LOCAL DEPOT

01454 273033

www.nwffuels.co.uk



A Division of the NWF Group plc
Registered Office: Wardle, Nantwich
Cheshire CW5 6BP
Registered No: 1117133 England
VAT No: 278 8387 88

ovenü
oven valeting service

...punctuality, pride, courtesy, and quality all come as standard...

- Range and AGA specialist
- Ovens and hobs
- Extractor hoods
- Traditional stoves
- Microwave ovens



the UK's favourite oven cleaning specialists

LET US HELP
call Clive Wallace on
0800 140 9800
07825 709 354
I look forward to hearing from you
www.ovenü.co.uk
Ovenü (South Cotswolds)

**THE BEAUFORT
BUREAU**

OFFICE SERVICES FOR YOU

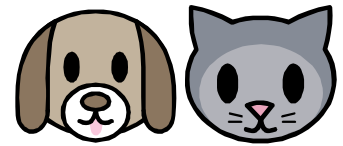
Photocopying : faxing : scanning :
computer training : design :
programmes : leaflets : tickets
and much more

CONTACT

01454 238411/417/174



Babysitting, Dog Walking and Pet Sitting



Caroline Carnegie	60 Highfields 01454 238918	14yrs old. Available for dog walking and babysitting.
Charlotte Carnegie	60 Highfields 01454 238918	20yrs old. Available for baby sitting, dog walking and pet minding.
Ciaran Ainsworth	01454 238052	Raising money to take part in World Challenge, so anything considered: pet sitting, baby sitting, lawn mowing, car washing.
Ellie Roberts	01454 238628 07912 937312	I am 18 years old. Available for babysitting, day time child care (CRB checked) and dog walking.
Katie Munro	01454 238 174	I am a 15 year old experienced babysitter (references can be supplied). I am reliable and trustworthy and love working with young children. I am available mainly at weekends (term times) and at all times during the holidays.
Libby Musty	01454 238118	I am 15 years old. I am an experienced babysitter and pet-sitter and am available during weekends (in term time) and most days during the holidays.

The West of England MS Therapy Centre has moved

We have moved!

After 26 happy years in Nailsea, The West of England MS Therapy Centre (801155) has moved to new, purpose-built premises in Bradley Stoke.

The new Centre is much larger and better equipped, with decent parking, and means we will be able to support many more people with Multiple Sclerosis from the Greater Bristol area.

The MS Therapy Centre provides therapies and support that help people to live well with MS, remaining active and independent for as long as possible, and to recover after a period of relapse.

Our new address is: Bradbury House, Wheatfield Drive, Bradley Stoke BS32 9DB.

For more information please see our website www.mstherapybristol.org.uk, call 01454 201 686 or email info@mstherapybristol.org.uk.

If you would like to support the Centre and its work, or take part in one of our events, please email fundraising@mstherapybristol.org.uk.

The West of England MS Therapy Centre
Bradbury House, Wheatfield Drive
Bradley Stoke, Bristol BS32 9DB Tel: 01454 201686

Chain letter for the parents of teenagers

Dear Friend: This chain letter is meant to bring relief and happiness to you. Unlike other chain letters, this one does not cost money. Simply send a copy of this letter to six other parents who are tired of their teenagers.

Then, bundle up your teenager and send him or her to the parent at the bottom of the list.

In one week you will receive 16,436 teenagers—and one of them should be worth keeping.

Warning:
One dad broke the chain and got his own teenager back.



MIND & BODY MATTERS

PILATES Monday 7.30pm Didmarton Village Hall
Wednesday 7.15pm Westonbirt Leisure centre
CIRCUIT TRAINING Monday 8.30pm Didmarton Village Hall
LBT (legs, bums, tums) Wednesday 9.00am Didmarton Village Hall

For more information regarding classes Personal Training, Weight Management or Massage please email or give me a call.

TOGETHER WE CAN MAKE A DIFFERENCE

Contact Ruth Carnaby - 01454 238733

Email ruth@bodymatters1.co.uk www.mindandbodymatters.net

CLINICAL AROMATHERAPY

A holistic and natural approach to wellbeing

Natural therapeutic treatments to treat chronic and acute conditions, restore wellbeing and vitality, and optimise our natural healing processes and immunity.

Take time for yourself to de-stress from a busy and demanding lifestyle, regain vitality and enthusiasm for your wellbeing. Or explore how clinical aromatherapy can be naturally effective in the treatment of acute and long term debilitating health conditions.

Mary Chancellor LDCA, MIFPA Tel: 0759 200 6440

E: mary@laluna-aromatherapy.com WWW: www.laluna-aromatherapy.com

May Sudoku

Neil Fozard

For the uninitiated:-

to solve the puzzle, each row, column and 3x3 box must contain each of the numbers 1 to 9.

EASY !!

NOT SO EASY !!

				5	8			
		5		4	3		1	
7		1						4
		3		7			9	
		4				3		
	9			1		6		
6						5		8
	5		2	6		1		
		8	9					

2						6		
			8				4	
							9	7
	1	4						
				3	1	7	6	4
				6				2
1				8		4		5
	8	5		1			7	
		7		9	6	1		

Answers to the April quizzes:-

'Easy'

2	6	5	8	9	4	7	3	1
7	3	8	1	2	6	9	4	5
1	4	9	5	7	3	6	2	8
4	7	6	2	3	5	8	1	9
8	9	3	6	1	7	4	5	2
5	2	1	4	8	9	3	6	7
9	8	4	3	5	2	1	7	6
3	5	7	9	6	1	2	8	4
6	1	2	7	4	8	5	9	3

'Not so Easy'

7	6	1	5	3	9	2	4	8
2	5	8	4	6	7	3	1	9
3	4	9	1	2	8	7	5	6
5	9	6	3	8	4	1	7	2
8	7	3	6	1	2	5	9	4
4	1	2	9	7	5	6	8	3
6	2	5	8	9	1	4	3	7
9	3	4	7	5	6	8	2	1
1	8	7	2	4	3	9	6	5

Baby Sitting & Pet Care

Fund raising for...



Going on holiday? Need a night out?
Then, no need to worry..

I am responsible, reliable and have
experience of looking after young
children and caring for pets whilst
you are away.

I am available at weekends and
some weekdays.

Call Libby on 01454 238118

Buying cartridges for your printer??

For the cheapest on the Web, try

www.cartridgeking.eu

Postage free on orders over £10

Once you have registered as a customer
and placed your order,
type 19281 in the Discount box
to obtain another 75p off.

Coombe Farm Logs

in 1m3 bags (dumpy bags)
Dry, seasoned hardwood logs

Free delivery

£50 per bag — 2 for £95

Call Tom Cole

Mobile: 07970911412

Home: 01454 238 896



EAST & SONS

Established over 100 years

PLUMBING AND HEATING ENGINEERS
CORGI REGISTERED GAS INSTALLERS
MEMBER FEDERATION OF SMALL BUSINESSES

'ASHDENE', HIGH STREET, HAWKESBURY UPTON

Tel/Fax: 01454 238353

Mobiles: (07973) 359776 / 441692 / 503149

Hawkesbury Contact List

Group	Contact	Phone	Website	Email
1st Hawkesbury Upton Guides	Louise Roberts Jane Bleaken	238628 232993		louise.roberts622@btinternet.com
After School Club	Louisa Tooker or Kim Anderson	238629 or 07527224741		hawkesburyasc@hotmail.co.uk
Badminton Club	Roy Townsend	238397		roy.townsend3@btinternet.com
Bethesda Chapel	Mervyn Coates	01453 843771		
Brownies	Liz Howard	238417		lizhowardconsult@aol.com
Chipping Sodbury Police Station	PC Mike Hart (voicemail)	0845 4567000 0117 945 5942		michael.hart@avonandsomerset police.co.uk
County Councillor	Sue Hope	238673		sue.hope@southglos.gov.uk
Cricket Club	Martin Gardener	238526	www.hawkesburycricketclub.co.uk	martin.gardener@cemex.com
District Councillor	Sue Hope	238673		sue.hope@southglos.gov.uk
Evergreens	Mandy Clarke	01454 261436		
Friends of St Mary's	Pauline Setterfield	238307		pleensetterfield@hotmail.com
Gardening Club	Terry Truebody	238364	www.hawkesbury-gardening-club.org.uk	terry_truebody@bigfoot.com
Hall Booking Secretary/ Village Calendar Booking Secretary	Lorraine Rutter	07770 691024	www.village-hall.org www.hawkesburyupton.com	bookings@village-hall.org calendar@hawkesburyupton.com
Hawkesbury Horticultural Show	Keith Player (Chairman) Karen Hasted (Vice Chairman) Vicky Rispin (Secretary)	238463 0796 331 8585 238262 232910	www.hawkesburyshow.org	— karen.hasted@lineone.net vicky@the-hollies.co.uk
Hawkesbury Primary School	Louise Lewis (Head)	238629	www.hawkesburyschool.ik.org	hawkesburyuptonprimary. school@southglos.gov.uk
Hawkesbury PTA	Becki Spokes	238841 07503 097554	http://www.hawkesburyprimaryschoolpta.com	debbiehawkesbury@googlemail.com
Hawkesbury Stallions Football Club	Simon Warren	01454 238070 07800844935	www.hawkesburystallions.co.uk	simonwarren@talktalk.net
Hawkesbury Upton Recycling Group	Neil Bennett	07914 908211		peterandpatsherry@tiscali.co.uk
Hawkesbury Volunteer Transport	Trip Coordinators: <i>(to arrange transport to medical appts.)</i> General Enquiries:	0797 206 5665 0797 206 5496		alan_shewry@msn.com
Local History Society	Barrie Hope	238673		hope.poolfarm@btinternet.com
Methodist Church Schoolroom:	Mrs Moira Coates	238479		
Methodist Church:	Rev. Paul Edwards	312439		paul@revpaul.co.uk
Neighbourhood Watch	Chris Rispin	232910		chris@the-hollies.co.uk
Parish Council	Hazel Bleaken	299227		hazel.bleaken@gmail.com
Parish News	Vicky Rispin (copy/subs) Fiona Rowe (copy) Sarah-Jayne Ainsworth (ads)	232910	www.hawkesburyupton.com/parish_news.html	parishnewssubs@hawkesburyupton.com parishnews@hawkesburyupton.com parishnewsads@hawkesburyupton.com
Pre-School and Toddlers	Sarah Green	07989 484 774	www.hawkesburypreschool.org.uk	enquiries@hawkesburypreschool.org.uk
Rainbows	Louise Roberts	238628		louise.roberts622@btinternet.com
RAOB (Bufs)	Iain Rae (Treasurer) Peter Webb (Secretary)	238702 294916		iainrae@uwclub.net susan.peter@uwclub.net
Royal British Legion	Sam Allen	238417		howrdallen@aol.com
Senior Citizen's Fund	Sam Allen	238417		howrdallen@aol.com
St Mary's Church	Linda Fairney	01454 238 553		william@fairney.wanadoo.co.uk
Tennis Club	Howard Bradley		www.hawkesburytennis.org.uk	howardb@dexam.co.uk
Theatre Group	Jenny Harris	238411		harris@backst.freeserve.co.uk
WI	Gill Truebody	238364	www.hawkesburyandhortonwi.org.uk	terry_truebody@bigfoot.com
Youth Group	Kath Harkness	238717		kathrynarkness@btinternet.com

We do our best to keep the contact list up-to-date. Any changes should be sent to parishnews@hawkesburyupton.com.