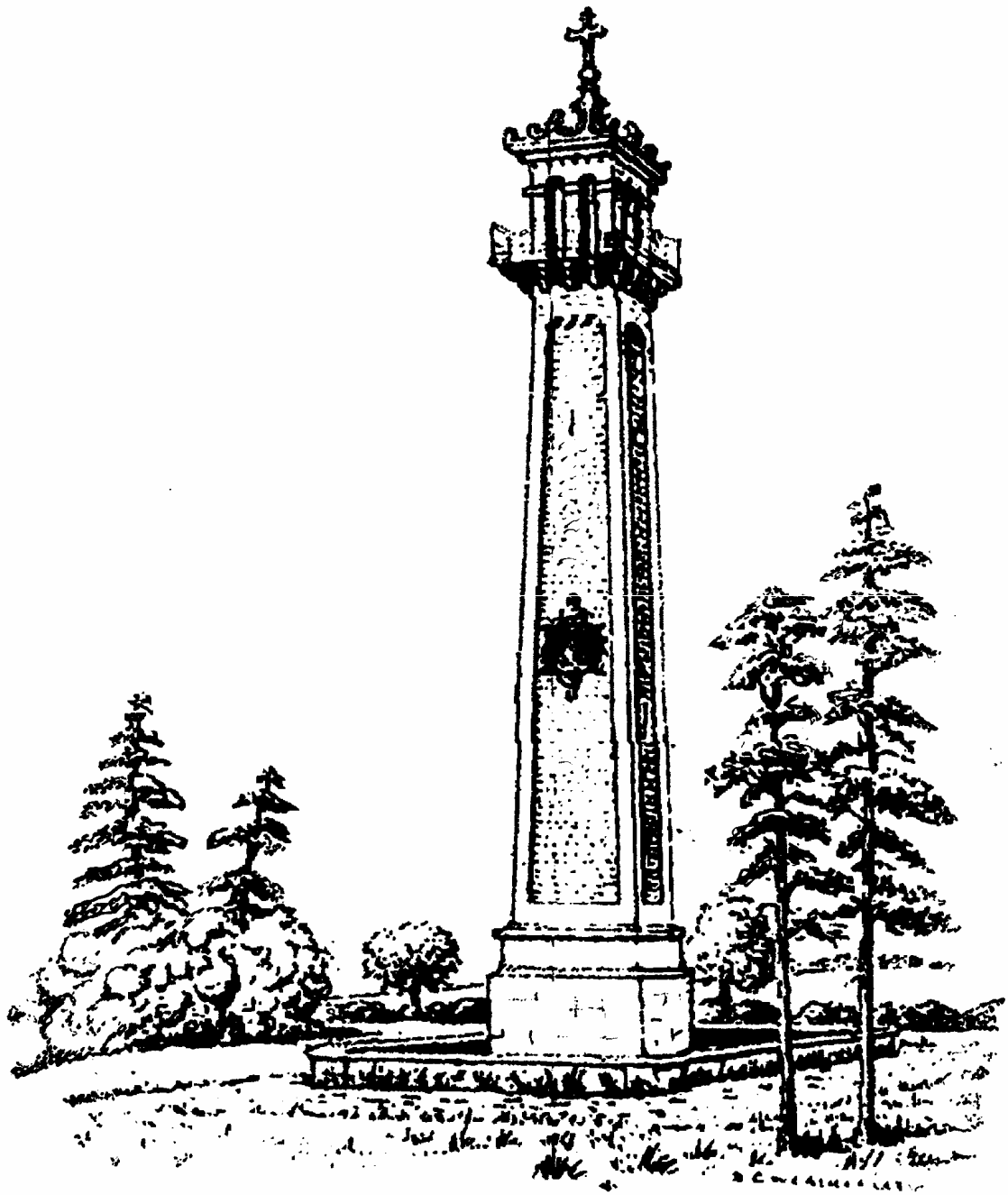


July 2013



*Hawkesbury
Parish News*



EDITORIAL

Fiona writes:

Welcome to the July issue of Hawkesbury Parish News!

Can it really be July already? So far we have actually had a few brief interludes of summer — in between the low cloud, drizzle, rain and gusting winds, of course! As the longest day of the year approached, a few days ago, someone pointed out that it would soon be getting darker earlier again. Well, as it was so dark at 8am that the kitchen light was on, I couldn't really imagine it getting much darker than it already was!

I should have known better than to sign up for cricket teas last month, as it was bound to pour down and, of course, did just that — all day — until shortly after the match was cancelled. Never mind — the freezer is now absolutely crammed with picnic food, in anticipation of the real arrival of summer. I refuse to be beaten yet and, as we go to press, will undoubtedly be clad in waterproofs chomping my way through the aforementioned picnic at a Westonbirt concert this very weekend. Windbrake and wellies in hand, Westonbirt here we come!

This month sees the exciting arrival and unveiling of our very own **Gromit** in Hawkesbury and a number of fundraising events in aid of Bristol Children's Hospital "Grand Appeal", as a result. The **Summer Garden Party** is also happening this month on **Saturday 6th**, with all proceeds going to the Senior Citizens' Fund. As you might expect, contingency plans are in place in case of adverse weather! Full details are in this issue.



**Deadline for copy for the August issue
is 15th July 2013! Please send it in as early as you can!**



Hawkesbury Parish News

Hawkesbury Parish News is edited, produced and distributed entirely by volunteers. Advertising and subscription revenue covers the cost of production only.

Typesetting, Fiona Rowe
Layout, Editorial: parishnews@hawkesburyupton.com

Treasurer & Subscriptions: parishnewssubs@hawkesburyupton.com

Editorial Team: Fiona Rowe
Vicky Rispin

Copy to: Fiona Rowe, 24 Sandpits Lane
Vicky Rispin, Coombe View,
High Street (next to the Village Hall)
parishnews@hawkesburyupton.com

Advertising: Jill Bendeaux
parishnewsads@hawkesburyupton.com

Distribution: Pauline Dixon 01454 299236
pcdixon@waitrose.com

Suzanne Flye

Printed by: Sprint Print,
22 Station Road, Yate. 01454 852255

Electronic copy always gratefully received — please save files in Microsoft Word or Rich Text Format (rtf).

Only digital photos sent by email can be accepted.

Disclaimer

Any opinions expressed or implied within this publication are not necessarily those of the Editors. The Editors reserve the right to exclude any item whose authorship is not disclosed. No responsibility can or will be accepted for any opinion, comment or error of fact printed in this magazine. All advertising is included in good faith; its inclusion does not necessarily endorse the product or service.

**Latest date for all items for the
August magazine is 15th July.**

Useful Local Info

Hawkesbury Village Shop

Opening Times

Monday - Saturday - 8am-6pm
Sunday - 8am-12:30pm

High St, Hawkesbury Upton. Tel: 238639



Hawkesbury Post Office

Opening Times

Mon: 9am-2pm Thurs: 9am-1pm
Tues & Wed: 9am-12pm Fri & Sat: 9am-5pm

Back Street, Hawkesbury Upton, GL9 1BB
Tel: 01454 238341



Postal Collection (opposite shop)
Mon-Fri: 4:45pm / Sat: 10:30am



**Did you know that we have Websites for the
Village and also for the Village Hall?**

**www.hawkesburyupton.com and
www.village-hall.org**

You can use these websites to:

- Check the Hall & Village calendars
- Book the Hall online
- View the Hall & Parish Council minutes
- View past editions of this magazine
- Link to many other village organisations
- and much more.



Compost	£1.50 per bag
Logs	£2.50 per bag
Firewood	£1.50 per bag
Woodchip	£1.00 per bag

*All available from the
composting site behind
the village hall*

For more information on prices and delivery of
larger amounts, contact:

Steve Dagger on 07903 037297

DATES FOR YOUR DIARY



Next Parish Council Meeting

The next Parish Council meeting will be on **Mon 1st July 2013**, 7.30pm in the Village Hall.

Coffee Mornings

Coffee Mornings take place on Mondays from 10am - 11.30am.

At Peggy Woffenden's house

Tea, Coffee and a biscuit or two for 50p. All welcome.



Evergreens

Tues 9th July

Visit to a garden and lunch
Leaving outside The Fox at 10am

If you would like to come along and need a lift please give me a ring.

Mandy 01454 261436



FAMILY ROUNDERS DAY RETURNS!!

Always a brilliant day out -
Please come & join us

At the:
Hawkesbury Cricket Ground
Sunday 7th July

**REGISTRATION FOR TEAMS
10.30AM -
GAMES COMMENCE 11.00AM**



Hawkesbury Show Saturday 31st August 2013

Note that this is **NOT** on the Bank Holiday weekend.

Full details next month!



~~24th Hawkesbury~~ Gromit Open Golf Tournament

Saturday 10th August 2013

at Cannons Court
Golf Club

Raising funds for the Grand Appeal

SUMMER GARDEN PARTY

In aid of the
Senior Citizens Fund

Saturday 6th July 2pm onwards

Back Street Gardens
(Little Shepherds & Bramblings)



Mobile Library

Times & Dates

10th & 24th June

Hawkesbury Village Hall	2.35 - 3.00
Hawkesbury War memorial	3.05 - 3.20
Hawkesbury Highfields	3.25 - 3.40



Yoga classes

with Joan Boulton every Thursday morning
at the Methodist School Room 10-11.30am.

£6 a session.

All ages and abilities welcome.

For more details call 01454 238411



Village Summer Walk

Saturday 3rd August 2013

Meet in the Village Hall Car Park
at 10.15 am for a 10.30 am start.

Afterwards at the Beaufort Arms
for a BBQ and come and meet Gromit!



SELF-CATERING COTTAGES ON INGLESTONE COMMON

Having a family do or some building work?

There are a number of self-catering cottages available, accommodating from 1 - 14 people.

Ring Hazel on 01454 299227 for details
or view on www.cotswoldedgecottages.com

KLEEN & GREEN

Professional
cleaners
who care

- ◆ Domestic and Commercial cleaning—daily/weekly/one off
- ◆ All staff police checked, fully trained, fully insured
- ◆ Local, reliable, friendly
- ◆ Ironing service
- ◆ Competitive rates

Tel: Sarah 01454 851487
Christine 07900 831967

Hawkesbury Upton Primary School presents: Our Sports Day Special!!!

On the 8th of June, 2013 Hawkesbury CE VC Primary School hosted a day of fun sporting events; our annual Sports Day.

"Sports day is away of showing how good you have got and being able to compete with your class mates". Mrs. Callicott, Hawk. Mrs. Callicott was the organiser of this great event and even helped many pupils practice.

The races were a great success, with a warm day filled with clouds; some quotes were "when there's a time without moon, you can always play egg and spoon. If you do up your shoe lace, you can do the obstacle race. If there is hay in the way you can't do the relay." Laura, Hawk class. The races were flat, egg and spoon, sack, beanbag, obstacle and relay.

Some races were for kids and adults out of school. There were toddlers races and dad races. These races were some favourite races. Louis said that "The dads race were funny and exiting." Tommy said "I thought it was funny to see little ones being fast."

The most energetic races are the obstacle and relay races. The obstacle is a mix of different races all in one. It can be tiring doing all of it! The relay is a group of kids running back and forth.

At the end of the day here was a mass of sweaty kids ready to go home for early night. Everyone was so proud from coming 1st, 2nd, 3rd and taking part altogether. Every single pupil big or small is the most sporty person because they took part.

By Annice Anderson, Thomas Merritt, George Baxendine and Louis Pember

Missing from Parish Hall Kitchen – can YOU help??

A whole set of cutlery and several frying pans have been noted as 'gone missing' during the past year! The Parish Hall committee have had to fund the purchase of more cutlery and new frying pans to replace those that are missing. Has anyone in the village borrowed some cutlery or the frying pans to use at a home event and simply forgotten to return them? If so, they will gratefully be welcomed back to the Parish Hall kitchen.



If you remember borrowing these items, and now realise that perhaps you have not got round to returning them, please take them to the Hall and leave in the kitchen (with or without a note – it's up to you!) or if locked, just leave them on the doorstep. If you cannot return them yourself, or know where they might be, please get in touch with any Hall committee member who will be pleased to help you.



SEVERN VIEW FARM
— Sold on Taste —

Boarding Cattery
01454 299471



Warm, comfortable, secure holiday accommodation for cats.

Special diets and medicines catered for

SEVERN VIEW FARM
— Sold on Taste —

Organic Farm Shop
01454 299236

Good, tasty organic food from our farm on Inglestone Common.

Open Saturdays and Sundays
– 10am to 4pm.



PEGASUS HEATING AND PLUMBING

OFTEC Registered C8787
GAS SAFE GAS INSTALLER No 68606

- ♦ Oil, Gas and Solid Fuel
- ♦ Installations and Repairs
- ♦ Bathrooms and Kitchens
- ♦ Domestic and Commercial
- ♦ Lead work specialist

ALL WORK GUARANTEED

Tel 01454 327708 Mobile 07860 471232

**HAWKESBURY THEATRICAL
GROUP
NEEDS YOU!**

**ARE YOU AGED BETWEEN
8 - 16 WITH AN INTEREST IN DRAMA?**

You will need the commitment and enthusiasm to attend regular workshops and rehearsals from September with a view to taking part in a great Pantomime in November.

Interested? Then come along to a short meeting on Tuesday

~ HAWKESBURY CHURCHES PRESENT ~

‘ space academy ’

Holiday Club for 5 – 11 year old children

From: July 31st to August 2nd 2013

*10.00am – 12.30pm each day in
Hawkesbury Primary School*

Family Service -
4th August 10.30am -11.30am
(also in the Primary School)

See flyers for more details -
coming later

* **Thank you!** *
* A big thank you to *
* everyone who sponsored *
* me for the 20 mile Pink *
* Ribbon Walk at Blenheim *
* Palace on Saturday *
* 11th May. *
* I was walking in memory *
* of a friend who sadly died *
* of Breast Cancer in *
* December 2012 aged 49 *
* years. *
* With your support I have *
* raised nearly a £1,000 for *
* the charity Breast Cancer *
* Care. *
* Thank you once again. *
* **Mandy** *

Would you like cash for something round the home that you no longer want/need/like?

Well, why not sell it on ebay

No ebay account? That's no problem.

I have been active on ebay since 2001 and my 100% positive feedback is as a result of more than 700 deals

For a percentage I will deal with everything including taking photos of the item, setting up the auction on the ebay website, dealing with any queries from buyers, receiving the sale proceeds and posting off the item for you.

Some items might attract a better price at a local auction house, and dealing with this is another service I can offer.

You can set the starting price and if required, set a reserve price.

Any questions, call me on 238778, email me at

mickbendeaux@hotmail.com or come and see me at 20 Birgape Road.



THE COMPLETE DECORATING SERVICE

Efficient, reliable all female team

A comprehensive interior painting and decorating service, specialising in colour co-ordination, carpets, curtains and accessories.

From individual rooms to complete houses, concept to completion.

**01453 835497
07766 712066**



**01249 783636
07909 542990**



THE HU5K RUN 2014 RACE REPORT

After an inauspicious start, when we were woken at 5am by the sound of rain hammering against the bedroom windows, the weather brightened up. Just in time for the start of the race, the sun came out to send 135 excited runners of all ages, from 7 to 70+, on their way. It was great to see such a wide range of participants, from school children and teenagers up to senior citizens. The 5km route started and finished on the school playing field before looping round past Farm Pool and along along the Cotswold Way to Sandpits Lane.

Two special guests joined us, adding to the excitement: former Olympic runner Nick Rose, who declared the start of the race and welcomed the first runners back, and Steve Webb MP, who presented the medals. Both Nick and Steve spent a great deal of time chatting to the runners and spectators, offering encouragement, inspiration and support. Both commented on the great atmosphere and the real community spirit of the whole event.

A full list of medal winners and all the runners' race times, plus a selection of photos, are now on the race's official website at www.hu5k.org. You can also view a full set of pictures and order prints at the online ordering facility Flickr, at this website: www.flickr.com/photos/hu5K For every print ordered, £1 will be donated to the PTA. Thank you very much to Steve Green Photography for taking such terrific photos and setting up this facility within 24 hours of the end of the race.

Thanks again to our generous supporters at Renishaw Engineering and the Hawkesbury Parish News team, whose cash donations covered the substantial costs of organising such an event e.g. hiring a Red Cross event support team, signage for the route, advertising banners, medals, and so on. Thanks also to our official water supplier, Alderley Natural Cotswold Spring Water for providing free bottles of water to every finisher and big bottles to the fastest runner in each category. We are very grateful to Aggy and Giueseppe and team, who brought The Fox Inn's new catering van to the race venue to sell delicious home-made pizza slices, sandwiches and home-made ice-cream. We highly recommend their catering for any outdoor event like this.

Countless other people worked hard to make the event a resounding success, from Anna and Andrew running a slick time-keeping operation, Deborah and Charene registering runners, Nuala, Di, Kate, Julia and team on the cake stall, Angela organising the marshalls and their support kits, Ian for setting up the water station, the HOBS for marking the course, all the marshalls who kept the runners safe and in good spirits. It was a fabulous team effort and a credit to our village community. Although we have yet to do the sums, I'm sure it will also have made a significant contribution to PTA funds, to the benefit of our lovely village school.

This event is now firmly on the annual calendar of Hawkesbury's many excellent community events - and we're already making plans for HU5K 2014 on Saturday 14th June, as so many people were saying on the day that they'd be back again next year! Well, it's never too early to start training....

Debbie Young
HU5K Race Director

B.H. COLE & SON LIMITED

Tel: 01454 238896 or mobile: 07970 911412

- ◆ NHBC Registered Housebuilders
- ◆ New Housebuilding
- ◆ Extensions & Conservatories
- ◆ Renovation & Refurbishment
- ◆ Patios, Paths, Walls & Landscaping
- ◆ Natural Cotswold Stone Walling a speciality

BUILDER'S RUBBLE, DEBRIS, GARDEN WASTE...

Any old junk cleared and hauled away
I can do the job at less than it would cost to hire a skip...
AND you don't have to load it!

Call TOM COLE on 01454 238896
MOBILE: 07970 911412

HU5K Runners' Times 2013 (the top 25)

Position	Runner	Name	Category	Time
1	91	Geoff Robson	AM	00:19:30
2	28	Simon Warren	AM	00:20:54
3	124	Daniel Bradley	AM	00:21:02
4	92	Gethin Robson	SM	00:21:23
5	42	Tom Royston	SM	00:21:44
6	112	Amanda Conway	AF	00:22:13
7	76	Dominic Webb	SM	00:22:17
8	89	Abi Robson	SF	00:22:22
9	23	William Romain	SM	00:23:06
10	3	Ritchie Jackman	AM	00:23:10
11	88	Will Robson	SM	00:23:19
12	95	Charlie Roberts	SM	00:23:27
13	104	Colby Barker	JM	00:23:47
14	105	Charlie Barker	AM	00:23:49
15	109	Anna Symanowski	JF	00:23:50
16	64	Malcom Forbes-Peckham	AM	00:23:52
17	66	Philip Mackenzie	AM	00:24:14
18	14	Jamie Bayliss	AM	00:24:57
19	70	Neil Spark	AM	00:25:05
20	65	Jeffrey Flynn	AM	00:25:36
21	6	Mia Stukins	JF	00:25:37
22	117	Darcy Hanson	SM	00:25:37
23	132	Matthew McCombe	AM	00:26:06
24	98	Richard Lawrence	AM	00:26:16
25	26	Carly Godden	AF	00:26:29

Well done to all those who organised the HU5K, helped on the day, took part and sponsored the runners and ultimately helped to valuable raise funds for the school PTA.—Ed.



Hawkesbury & Horton W I

We were fortunate to have fine weather for our Garden Meeting in June at Oakfield Farm Horton. The highlight of the evening was exploring the converted lorry, a Mercedes 814 Box van, that Caron Gay and her husband travelled the Silk Road to Mongolia in, and which had recently been the subject of one of our talks.

We are very grateful for their hospitality.

The Walking Group recently visited the Badminton Estate at bluebell-time and were inspired by the wonderful spectacle and perfume; a moment to be captured on camera!

Diary Dates

2nd July - Tall Ships with Brian Robinson Competition - A Nautical Knot

August - No Meeting

3rd September - Movie Musical Memories with Terry Merrett Smith

Visitors are always welcome at our meetings on the first Tuesday of the month, 7.30pm at the Village Hall.

Betty Salthouse 01454 238410

Living Well with Dementia roadshows 2013

- for anyone who has recently been diagnosed with dementia and their carers or families
- practical, emotional and health advice and information
- reassurance that you're not on your own

Thursday 4 July 6.30pm – 9pm

Turnberries Community Centre,
Bath Road, Thornbury BS35 2BB

Email: cengagement@southglos.gov.uk
www.southglos.gov.uk/dementia Phone: 01454 862356

A.J. MORGAN FARM PRODUCE France Lane Farm Tel: 01454 238215

Traditionally reared pork & lamb, Free Range Eggs
Home produced dry cured bacon, ham, gammon, Salami, Chorizo,
Hawkesbury Faggots, Black Pudding, 1/4lb beefburgers,
Various flavour sausages, including NEW Spicy Chilli
All home made in our five star premises.

Only cooking for one? Did you know - you can buy just one sausage, one fag-got, one slice of ham, one rasher of bacon & even one egg if you want to!

Last minute BBQ? Unexpected guests to feed?
Shop Officially Closed? Don't worry just call in, or ring us!
Karen 07929 947149 or Andrew 07973 137799.

M G COUNTRYSIDE DEVELOPMENT

*Fencing, Tree Surgery, XC courses,
Landscape Gardening, and Fire Wood*

Miles Batten 07866486808

Giles Bleaken 07976562323

Website: www.m-g.org.uk

Email: miles@m-g.org.uk

Based at Upper Chalkley Farm, Horton



HAWKESBURY GARDENING CLUB

www.hawkesbury-gardening-club.org.uk

TROWEL & ERROR

Meetings are held at 8pm on the 4th Monday of the month in the Methodist Hall in Back Street.

Our speaker for May was **Victoria Logue** who gave a talk on **Extending the Flowering Season**.

She pointed out that the difference between amateur and professional growers is feeding. Amateurs don't do enough of it. Any fertiliser will do.

Take photos of your garden to help you remember how awful it looks. On a photograph plants that are in the wrong place and plants that are no good etc stand out like sore thumbs. Get rid of them! Unloved or unwanted plants should be thrown in the recycling bin. It is not murder!

Dig up and divide herbaceous perennials and remember that for divisions you only need a shoot and a root but they should preferably be attached to each other.

Make a single focal point in your garden and borrow the surrounding landscape. Knocking down the neighbours fence in order to 'borrow' their landscape is not recommended.

On 22nd July 2013 we will be celebrating our first 5 years by going on an evening outing to Rodmarton House and gardens.

We do not meet in August but will resume on 23rd September with another eventful programme.

Don't forget to get ready for the highlight of summer in the village - Hawkesbury Show - which is on Saturday 31st August.

Terry Truebody (01454 238364).



NO MATTER THE WEATHER

By Alan C. Porter



"When I was a lad. . ." I can remember my granddad saying that and then my dad and now it's been passed down to me. Definitely a male age thing. I can hear my sons saying now, "It wont happen to me," but it will, it's imprinted in the genes.

So to recap, when I was a lad, you could always rely on the seasons doing what they were supposed to do. Winter would turn my knees to a spectacular purple and blue with the cold, long trousers hadn't been invented when I went to school. Summer the sun would shine for weeks on end, or so it seemed at the time. Not so these days as the seasons appear to have got well and truly mixed up. You can't rely on a two week summer break providing two weeks of fabulous weather. Maybe Global Warming is to blame, perhaps a misplaced Jet Stream, but there is one thing you can rely on no matter the weather. The glorious Devon cream tea!

Two scones, one plain, one fruity, strawberry jam, clotted cream and a pot of tea. This is true salivating food, a holiday extravagance not to be ignored, a cholesterol explosion on a plate!

No matter what the weather is doing outside the traditional cream tea is something to be savoured and enjoyed slowly, no matter what part of the country you are in. It brightens up the dullest of days and if the sun is shining, paradise has been achieved. It also poses the unanswerable question of what goes on first, the cream or the jam?



BEAUFORT COMMERCIAL SERVICES

Unit 4B, TT Trading Estate,
Hatters Lane, Chipping Sodbury,
Bristol, BS37 6AA
01454 800164 01454 854437

LGV, HGV and HORSE BOX
Maintenance and Repairs

Beaufort Minibuses & Taxis Ltd

4 6 8 16 24 seats

Specialists in Disabled Transport

Accounts Welcome

Advanced bookings only -

call Andy on 01454 313721

beauforttaxi@aol.com

Beauty and the Beasts

In April 2014, a group of intrepid villagers will be running the Virgin London Marathon. Just like the fairy tale, Beauty (Vicky Starling) will be accompanied by a Beast. Or, more accurately in her case, five (lucky girl!) – Dave Anderson, Dave Williams, Craig Keogh, Geoff Robson and Jim O'Brien.

The Beasts have done a bit of running before (two of us have run London and Paris marathons, and the others have run half marathons), but it's all new for Beauty! So, as you see us out in the wind and rain of Bath Lane, give us a cheer on the way.

Across the next few months, we will be announcing a series of fund raising activities that we'd love you to be part of! It'll be great to have you accompanying us on our journey!

We can be found on Facebook – Beauty and the Beasts.



THE HAWKESBURY SHOP

HIGH STREET, HAWKESBURY UPTON, TEL. 01454 238639

New to The Hawkesbury Shop

Madhuban restaurant style homemade curry sauces

Easy to use just heat and eat choose from our new range.

BALTI

BHOONA

JHALFREZI

KORMA

TIKKA MASALA

HOT MADRAS

THAI RED AND GREEN CURRY

Special introductory price

We have added to our chicken range. We now have thighs and drumsticks as well as breast and whole chickens fresh in every Wednesday ideal for BBQ'S or curries.

ALWAYS AVAILABLE

Hobbs house bread delivered 6 days a week (orders taken)

Wiltshire kettle cooked ham

Selection of cheeses from Black bomber, French Brie and Stilton to your everyday cheddar.

Why not call in and see us we are open 7 days a week!

The Fleece Inn, Hillesley

We are open for business again, under community ownership, as a Free House offering local real ales



Open all day, 7 days a week



Good quality food at sensible prices available lunchtimes and evenings

Panda and the team would love to welcome you to the new look Fleece

www.thefleeceinnhillesley.com

01453 520003



Hawkesbury Village Hall

Mon, Wed, Thurs & Fri 8.45 - 11.45am

All children are welcome

from two years old

Please contact us on

07989 484 774

Charity number 1013170

Ofsted Registered 136003



Hawkesbury Upton Post Office

Open All Day Fri & Sat!

New opening hours:

Monday	09:00 - 14:00
Tuesday	09:00 - 12:00
Wednesday	09:00 - 12:00
Thursday	09:00 - 13:00
Friday	09:00 - 17:00
Saturday	09:00 - 17:00

Postal Services - Banking Services
 Cash Withdrawals - National Lottery
 Foreign Exchange - Stationery -
 Cards - Gifts

Buckingham Palace

Gordon and I had a wonderful time at the Queen's Garden Party, and I would like to thank the people who made this possible by recommending me for a British Empire Medal.

Mary Beresford



Flights of Fancy

If you're off travelling this summer, be careful who you sit next to on the plane. You never know where it might lead. Here's a cautionary tale from my pre-Hawkesbury days.

In my 20s, I worked as a journalist for a trade magazine in London, often travelling abroad on business. When going somewhere new, I always tried to add in a day's holiday for sightseeing. One Sunday on a flight to Geneva, I opened the book I'd brought with me: Dr Zhivago.

"Oh!" said the middle-aged businessman next to me. "What a coincidence! I've got that book in my bag too."

So began a long conversation that lasted till we touched down and ended with us arranging to share a boat trip around Lake Geneva that afternoon. He seemed pleasant enough, and after all, we had something in common – Dr Zhivago. The sun was shining, it was a glorious trip, and we followed it up with a drink in a bar. He asked if I'd join him for dinner.

All of a sudden, I started hearing what he was saying as if through the ears of my fiancé back in London. He would certainly not have viewed this man as a platonic friend who had no ulterior motive.

I made a transparent excuse and declined. The man gave me a wry smile, we shook hands (our only physical contact) and parted forever.

Only later that evening, alone in my hotel room, did I begin to wonder whether I'd been taken in. Surely this wasn't just a well-practised chat-up line, an opening gambit honed by years of business trips? Suddenly I realised: I had never seen his copy of Dr Zhivago. I suspect it didn't actually exist. And I never did tell my fiancé.

Wherever you're going for your holidays this summer, have fun, take care, and don't talk to any strange men.

You'll find more stories of Debbie's travels on her blog at www.youngbyname.me

DEB'S CELEBRATION CAKES

Individually designed cakes for weddings and special occasions

Workshops - have a go yourself and learn a new skill

Please contact me to find out more, discuss ideas or see my work

DEB PIDSLEY 01453 834394

07890292125

www.debscelebrationcakes.com

FIREWOOD

Dry seasoned hardwood logs, delivered cut and split to your requirements.

We also sell kindling and coal.

Lower Kilcott Farm

Call Steve Thompson

Home: 01454 232941

Mob: 07974 194012

NE odd jobs

A fully insured, professional and reliable service

- Garden maintenance
- Cleaning
- Weeding, grass cutting
- Painting

... as well as all those other little jobs you just never seem to get around to.

Call: Nicola Evered

07947 072780 or 01453 844124



SUMMER GARDEN PARTY

In aid of the Senior Citizens Fund

Saturday 6th July 2pm onwards

Back Street Front Gardens

(Little Shepherds & Bramblings)

RAFFLE

Toys & Games

TOMBOLA

Plants & produce



Books



Face painting



BRIC A BRAC

Competitions



Come for some fun and relaxation! Have a Hand
Massage or

Find out what your Handwriting says about you.

Be entertained by the Ukelele Band



Enjoy a cream tea
or a home-made cake

Donations for the tombola or raffle gratefully received.
Also any china, glassware or jewellery (for the Bric a Brac stall).
Please leave in Prim's porch (Well Cottage, Back Street) or
Liz & Sam's Porch (The Laurels, Back Street)

Any cakes welcome on the day!
We look forward to seeing you there.
(If wet, we will be in the Methodist Hall)

Hawkesbury Parish Council



*Grass cutting and emptying of dog bins
Will fall to the Parish Council in 2014*

What effect will this have on us all?

Following the Parish Council meeting held on Monday 17th July 2013, a decision was made to hold an open day on Saturday 13th July 2013 at 10am at the Methodist Hall School room on Back street; this invitation is open to everyone to see what changes 2014 will hold. Grass cutting on highway verges and emptying of dog bins could be axed next year by South Gloucestershire Council.

Under proposals the grass cutting of highway verges which is normally cut by South Gloucestershire Council 14 times a year will only be cut twice (unless there is any evidence of a risk to lives). We can choose to take on this work by employing a contractor or pay South Gloucestershire Council for the 12 additional cuts.

With regards the emptying of dog bins, the parish at present have 4 dog bins and the cost of emptying 2 bins in 2014 will cost in the region of £ 459.00. However, one way of reducing this cost is to replace dog bins with normal waste bins. Dog poo bags can be placed into these bins and they will be emptied (at the moment) free of charge.

There is a public consultation being run by South Gloucestershire Council on the above proposed changes until the 13th September 2013. But why not come and speak to your Councillors and voice your concerns or check if these changes will have any effect on you on Saturday 13th July.

The reason for these changes is to help reduce South Gloucestershire costs.

Parish Clerk - Mrs Hazel Jones 2, Fox Close, Hawkesbury Upton, Badminton, South Gloucestershire, GL9 1EQ
Tel- 01454 238074

Katherine Lady Berkeley School's Summer Festival Saturday 29th June 11am – 4pm.

KLB Summer Festival is going to be a fabulous fun day for all the community. There will be bands playing throughout the day, taster sports sessions, displays from local clubs and schools, lots of stalls, bouncy castles, traditional fayre stalls and refreshments, a BBQ and Pimms and Beer tent.

Stall places are available at £10 a stall for local arts, crafts, charities and businesses.

For further information email klbfriends@klbschool.org.uk
or phone Sally-Anne 01453 843069.

HOME COMPUTER PLAYING UP? NEED SOME HELP? DON'T DESPAIR!

For help with:

- Windows 98, Me, XP, Vista and 7 and 8
 - The Internet, Wireless Router Setup
 - Hardware Upgrades and Repairs
 - PCs Custom Built to order
- No problem too small or too large!

Contact: Lloyd Buckingham

Tel: 07940 155064
or 01454 260504
Email: lb_cs@hotmail.com

LB Computer Services
**YOUR LOCAL, LOW COST,
HOME COMPUTER REPAIRER**



Down to Earth Tree Care Ltd



Full tree surgery (including rope and harness work)
garden maintenance services

Call Graham Chamberlain for free advice or quotation.
Tel: 0778 606 4803 or 01454 294520

NPTC qualified and insured practitioners

Calling all trophy and shield winners from Hawkesbury Show 2012

If you have a silver trophy, cup or shield, from last year's Show, that you have been displaying proudly on your mantelpiece, it is nearly time to bid it a fond farewell or maybe *'au revoir'* and return it to the show committee to be cleaned and catalogued. It will be seen again in the traditional trophies display in the Village Shop window in the week before the 2013 Show



If you have such a trophy, please return it to any of the committee members below:

- Mrs Deborah Neame, 'Kelmscott', France Lane Tel: 232979 deb@greenhillspotto.freeserve.co.uk
- Mrs Vicky Rispin, 'Coombe View' High Street. Tel: 232910 Vicky@the-hollies.co.uk
- Sue Manfield-Cox, 'Millstone Farm', Inglestone Common, Hawkesbury, S Glos. GL9 1BS

If you cannot get your trophy to any of these addresses, please contact Vicky Rispin who will arrange collection at your convenience.

All trophies to be returned by August 1st please - freshly cleaned and polished trophies will be received with extra appreciation!

The Show Committee

TIPS FOR SUCCESSFUL SHOWING OF PRESERVES

I thought that these tips would be useful before you start making your preserves for next years Show!

General:

- Jars and bottles of clear glass – clean and unblemished eg. no chips around rim.
- Labels should be straight, a suitable size for the container, state the contents, day, month and year of making.

Covers for jams, jellies and marmalades:

- The twist top should 'pop' when unscrewed. This shows a good seal. Often an exhibitor will be tempted to test the seal before the Show and thus destroy it. Don't do it! That's our job!
- New twist top lids give the best seal but there is no need to use a wax disc as well.
- Do not use old lids when exhibiting as they can encourage mould if not cleaned thoroughly.
- Wax discs, placed smooth side down and trimmed to fit the jar can be used but only with a cellophane cover.
- Jars should be filled to within 3mm(1/8 inch) from top.
- Carefully wipe around top edge if splashed before sealing.
- Lids should be put on freshly potted preserves immediately each jar is filled, when hot.

Fruit Curd:

- Technically not a true preserve. Only make if there is a specific class for curds.
- Must be covered with a wax disc, cut to fit, and a cellophane cover.

Chutney:

- Consistency reasonably firm and uniform. No large pieces of onion, skin, etc.
- Jars filled to 12mm(1/2 inch) from top.
- No air bubbles or free vinegar.
- Use twist tops with plastic lining.
- Do not use cellophane covers.
- Label should state 'hot' or 'mild', type, day, month, and year of making.
- Keep at least 2 months before showing in order for flavours to 'mature'.

I hope that these tips help.

Pam Bendry

Judge of 'Food' section at the Show



LYNN'S DRIVING SCHOOL

GRADE 5 female driving instructor.

Weekly lessons or intensive courses.

I have a Nissan Micra which is easy to drive.

Pass plus registered.

Excellent 1st time pass rate.

For further details please contact...

01454 219101 or 07919410064
or lynnie100@hotmail.com



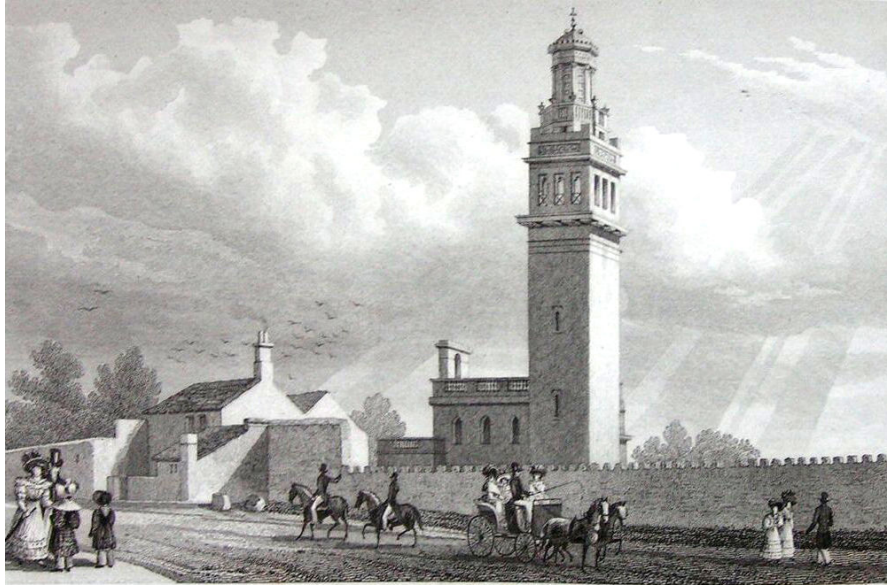
MARK POWELL

DOUBLE GLAZING INSTALLATIONS & REPAIRS
WINDOWS - DOORS - CONSERVATORIES
SASH WINDOW REPLACEMENT SPECIALIST
MISTED UNITS, HANDLES & LOCKS REPLACED

LOCAL TRADESMAN

CALL MARK ON
01454 326804
MOBILE 07860 805197

Hawkesbury Local History Society



William Beckford (and his Tower)

AMY FROST aims to give us a 'whistle stop tour' introducing the somewhat eccentric William Beckford as a writer, collector and creator of magnificent buildings. He was one of the most significant collectors in the history of British art and design, with a taste for the very best of paintings, furniture and objets d'art. Amy's talk will reveal his whole life, from his education and the impact of his grand tour, to the building of Fonthill Abbey and the vast collection it housed, then moving on to his retreat to Bath and his final years.

Friday 19th July at 8.0pm

Hawkesbury Upton Village Hall

ALL WELCOME: Members £1.50, Visitors £3.0



Vicky's Childminding
Ofsted Registered Childminder
Based in Hawkesbury Upton
Full and Part time spaces available
Please call Vicky Starling
07742 827 863 or 01454 238 418

All About Mi Beauty Boutique & Training School

Based in Chipping Sodbury and with over 15 years experience, We offer an extensive range of professional beauty & holistic treatments using entirely organic, paraben and cruelty free products.

Alongside the treatments there is also a comprehensive range of training courses available that are internationally recognised and fully accredited, upon completion students can obtain employment in a salon, spa or work for themselves.

Hartley Close, Chipping Sodbury, BS37 6NN 01454 601295

www.allaboutmi.co.uk allaboutmibeauty@gmail.com



CLASSES IN HAWKESBURY VILLAGE HALL

NIA IS A BLEND OF MARTIAL ARTS, HEALING ARTS & DANCE, PRACTICED TO SOUL STIRRING MUSIC FROM AROUND THE WORLD.

ALL ABILITIES, WOMEN & MEN, EVERYBODY WELCOME
WHEN? WEDNESDAYS 5 – 6 p.m. ON A DROP IN BASIS

For more information, please contact Geri Timmins –
01453 844766 or 07775 724888 gericoombe@gmail.com or
look me up on www.nianow.com/gerinia

❖❖❖❖ TILING SERVICE ❖❖❖❖

Professional tiling at competitive prices

Friendly, reliable, courteous service

For a free quotation, please contact

Peter at Artisan Tiling

0796 0645893

artisantiling123@aol.com



Gromit Unleashed is a new ground-breaking public art exhibition, hitting the streets of Bristol (and Hawkesbury) this summer to raise funds for Bristol Children's Hospital charity, Wallace & Gromit's Grand Appeal.

For ten weeks from 1st July, the art trail will feature 70 giant, Gromit sculptures, designed by well-known and local artists, which will be auctioned after the event. See www.gromit-unleashed.org.uk.

In Hawkesbury, we are fortunate to be getting our very own Gromit as part of that trail, thanks to sponsorship by Mark & Fiona Steeds of The Beaufort Arms.

As a result, there is a flurry of Gromit-related events coming up in the next few weeks. Read on for details...

1st July - Unveiling with Hawkesbury Primary School at 11am

8th July - "Morris and Gromit" with Winterbourne Down Morris dancers 8pm (Morris time)

20th July - Ukulele Gromit 2pm – 5pm sing-a-long and Barbie

3rd Aug – Hawkesbury Village Walk with Gromit – Barbie lunchtime



© and TM Aardman/W&G Ltd. 2013.
® Wallace & Gromit's Grand Appeal. Charity No. 1043603

Hawkesbury War Memorial project – Needs You!

Some of you may know that there is a Member of Parliament commemorated on the village war memorial. But how many know the other stories associated with the village in WW1? Did you know about the village lad who became one of the most highly decorated soldiers with the Canadian forces; or the story of the young man who survived the sinking of his battleship in 1915; or the one about the Hawkesbury lady who served on the Western Front?!

For a number of years now I have been researching the men who are commemorated on the village war memorial. Following my talk to the Hawkesbury Historical Society in November 2011, I extended my research to try and tell the stories of all of those who made a contribution to the war effort in the First World War.

Recently I uncovered a newspaper article in the Gloucestershire Archives from late 1918 which stated that 164 men and women from the parish had made a contribution during the war. I went back to my research and discovered that I have so far identified 158 of them! My plan is to publish a book telling all of the stories to coincide with the centenary of WW1.

Now, how can you help?!

If you have any information, photographs or memorabilia associated with those who served in WW1, or those who died in WW2 I would love to be able to use them and add to the research I have already done. Recently I have been given copies of William Bleaken's WW1 Memorial Scroll and an image of a dog tag worn by Eber Bleaken, both of which have helped add to each individual's story. If you have any information or images which you would be willing to share, please get in touch.

Simon Bendry
C/O 14 Hunters Mead
sbendry@gmail.com
01225 766277



**COUNTRY
PROPERTY**

theauctioneer.biz
PROPERTY AUCTIONEERS

Nick Cragg FRICS FNAEA
01454 321339
Specialist Property
Sales Lettings Consultancy
South Gloucestershire
www.countryproperty.co.uk

ANTHONY HARCOURT
OSTEOPATH & ACUPUNCTURIST

No 3 Horse Street,
Chipping Sodbury
BS37 6DA

Tel: 01454 326256

UKULELE SING-A-LONG & BBQ



WHEN

Saturday 20th July
2-5pm

WHERE

The Beaufort Arms
High Street, Hawkesbury Upton

FEATURING · The Hawkesbury Ukes

WWW.BEAUFORTARMS.COM

**ALL AGES
EVENT FOR
THE WHOLE
FAMILY**

**NO TICKETS.
GENEROUS
DONATIONS
PLEASE.**

**COME AND
JOIN IN THE
FUN.**

**ALL PROCEEDS
WILL BENEFIT
WALLACE &
GROMIT'S
GRAND APPEAL,
THE BRISTOL
CHILDREN'S
HOSPITAL
CHARITY.**



Balloon and Venue Décor
Hog Roasts and BBQ's

LEAVE THE PLANNING

TO US, ITS TIME TO CELEBRATE!!

www.cotswoldcelebrationcompany.co.uk

01454 238368 07787532308 07584417857



PLUMBING
AND HEATING

BOILER
SERVICE &
SYSTEM
MAINTENANCE

**FOR OIL BOILER AND
AGA/RAYBURN SERVICE**

Tel: 01666 504911 or 07867 434345
or email:

info@indplumbingandheating.co.uk

OFTEC REG. NO: C4634
Grant Boilers Accredited Installer
www.indplumbingandheating.co.uk

HOGS Presents...

Gromit UNLEASHED®



~~Hawkesburg~~ The 24th Annual Gromit Open Golf Tournament

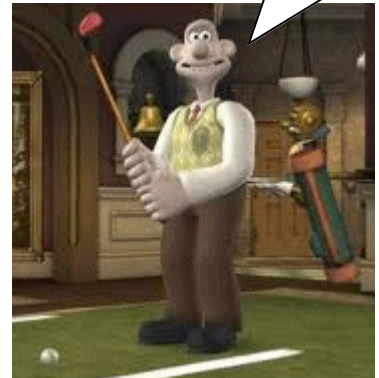
**NOTE THE
CHANGED DATE!!**

on Saturday 10th August 2013

**at Cannons Court
Golf Club**



IT'S THE WRONG GOLF
TROUSERS, GROMIT!



CHOCKS AWAY,
OLD CHUM!

**Breakfast at 8:30am —
Tee off at 10am**

(signalled by the Vernon Chappell ceremonial rocket launch...)

**Presentation in the evening in the Beaufort Arms garden
*Barbecue and entertainment — all proceeds to the Grand Appeal***



CRACKING TEA OFF,
GROMIT!

Aardman & GRAND APPEAL

present Gromit Unleashed
Raising funds for Bristol Children's Hospital
Working with



© and TM Aardman/W8G Ltd. 2012.
*Aalace & Gromit's Grand Appeal, Charity No. 1043603



Village Summer Walk – Saturday 3rd August 2013

Did you know that the Parish of Hawkesbury has the most public footpaths than anywhere else in South Gloucestershire?

Come and join us for a 3 mile walk round the village using these footpaths and shortcuts, visiting places you never knew were there! There will be some stiles, but mostly the walk is on the level with a short detour down to the church.



Afterwards join us at the Beaufort Arms for a BBQ and come and meet Gromit!

Please meet in the Village Hall Car Park at 10.15 am for a 10.30 am start.

Dogs (or Gromits!) and children are welcome.



If you would like to receive email notification of future walks, please contact Jane Jones on rightsofwaygroup@hawkesburyupton.com or telephone 01454 238633.

Hawkesbury Summer Skittles

The results so far...

	Points	Pins		Points	Pins		
						Highest score - Gent	
						Dave Royston	52
						(Cream Teas)	
						Highest score - Lady	
						Vicky Pyatt	44
						(Spooners)	
						Highest spare - Gent	
						Dave Royston (Cream Teas)	15
						Martin Gardener (Winkers)	
						Highest spare - Lady	
						Sam Allen	13
						(Spooners)	
						Highest Leg score - The Percy Watts Cup	
						Winkers	64
						Highest Pins total - The Pete Huxford Trophy	
						Rats Pack	338

CHIM-CHEROO
PROFESSIONAL CHIMNEY SERVICES

- Woodburners, open fires, Agas etc
- Member of the Institute of Chimney Sweeps
- Fully insured
- CCTV inspections
- Blockages removed
- Safety certificates issued
- No mess

Hire a lucky sweep for your wedding!

Richard Stone
07805 330 961
chimcheroosweep@yahoo.co.uk
24 Gloucester Street, Wotton-under-Edge, Gloucestershire, GL12 7DN

Chartered Physiotherapist

Diagnosis & treatment of muscle and joint problems.
Help following fractures and falls.
Stroke & MS rehabilitation & physical maintenance.
Registered with Health Professions Council.

 **Sarah Ward MCSP SRP**

Contact: 01666 840196 Luckington, Wilts.



FAMILY ROUNDERS DAY RETURNS!!

Always a brilliant day out – Please come & join us

At the:

Hawkesbury Cricket Ground – Sunday 7th July

**REGISTRATION FOR TEAMS 10.30AM –
GAMES COMMENCE 11.00AM**

Put in a team of your own –

(10 players per team, £3 per player to enter)

Or just come along and we will try and place you in a team.

Bar & BBQ available on the day –

JUST COME AND HAVE A DRINK AND A LAUGH IF NOT PLAYING!!

please contact Anne Weston on 01454 232973 or anneweston@interwales.com

Cricket club really appreciate your support



Forth coming events - Curry and Race Night — March next year!

Hawkesbury Summer Skittles

June Fixtures

Again this year, all fixtures are at The Beaufort Arms.

Week Commencing	Mon	Tues	Wed	Thurs	Start time
July 1st	3 v 7	4 v 10	6 v 2	8 v 1	8:30
	<i>Spare week for rearranged fixtures</i>				
July 8th		4 v 5	6 v 8		8:30
July 15th	1 v 3	2 v 7	10 v 6	5 v 4	8:30
July 22nd	1 v 2	6 v 5	10 v 7	8 v 4	8:30
July 29th	6 v 1	4 v 2	10 v 8	3 v 5	8:30

- 1 Cream Teas
- 2 Beaufort Pingers
- 3 Rats Pack
- 4 Old Foxes
- 5 Hornets
- 6 Brats
- 7 Spooners
- 8 Winkers
- 10 Hillbillies

The Summer Skittles League is unique to Hawkesbury players, with varying degrees of skill (or lack of)! To join, contact Mick on 238778 or Dick on 238897.



...punctuality, pride, courtesy, and quality all come as standard...

- Range and AGA specialist
- Ovens and hobs
- Extractor hoods
- Traditional stoves
- Microwave ovens



the UK's favourite oven cleaning specialists

LET US HELP
call Clive Wallace on
0800 140 9800
07825 709 354

I look forward to hearing from you
www.oven.co.uk
Ovenu (South Cotswolds)

TV or Satellite Problems?

Digital Switchover, Tuning,
Cabling, Freeview, Freesat,
Multiroom/Sky Eye, Internet TV

Free estimates
Friendly local service
07710 794314 or 01454 238418

HAWKESBURY SHOW



Everyone looks forward to Hawkesbury Show day, but without the intrepid volunteers, the show just would not happen.

Without entries, there would simply be an empty show tent.

Think about what you can do to make the **128th Hawkesbury Show** a success.

Can you spare an hour on the day to help out?

Use your imagination now and think about what **you** could enter in the show.

**Go on —
do your bit!**

*Contact a member of the
show committee to volunteer.*

Vicky Rispin: 232 910

Keith Player: 238 463

Dick Blundell: 238 897

Saturday 31st August 2013

Meet author Richard de Methley at Hawkesbury Show



Richard de Methley is a graduate of Worcester University, a lecturer in Medieval and Tudor Studies and a Castle Specialist of wide experience. You may remember him as Richard Lyne-Pirkis, who, for fourteen years was Headmaster of Rose Hill School, where one year his annual fireworks display famously blew out all the windows of the main school building!

Richard has adopted the nom de plume de Methley, after the Yorkshire town from where his family originated at the time of the Conquest. After leaving Gloucestershire, Richard returned to live in Yorkshire, leaving teaching to concentrate on his writing.

His first novel "The Lion and the White Rose" is set in June 1190, on the eve of the Third Crusade, and following the success of this story, Richard has subsequently written three more books in the "White Rose" series.

'Richard blends lusty, battling adventure with authentic, historical detail, whisking back nine centuries with skilful ease'


Richard will be at Hawkesbury Show to sell his books and chat to anyone who has an interest in medieval life.



R&B VEHICLE SERVICES
Est. 10 years

01454 238700

REPAIRS, SERVICING
DIAGNOSTICS, BATTERIES
TYRES, EXHAUSTS
FOR CAR, 4 X 4 & LIGHT VANS
FREE LOAN CARS AVAILABLE
YOU CAN NOW BOOK YOUR MOT
ONLINE AT
www.mottetbury.co.uk



COST EFFECTIVE MAINTENANCE AT A FRACTION OF DEALER PRICES
CALL RICHARD OR BEN FOR FRIENDLY, RELIABLE SERVICE

- Physiotherapy
- Homeopathy
- Podiatry
- Chiropody
- Chiropractic
- Aromatherapy
- Reflexology
- Acupuncture
- Holistic Massage
- Sports massage
- Nutritional Advice
- Pilates Exercise Classes

TOLL HOUSE CLINIC

Freephone 0800 0936 362 Telephone 01454 32 22 32

www.tollhouseclinic.co.uk

47 Horse Street, Chipping Sodbury, BS37 6DA

The 4 Door Challenge

Show Day - Saturday 31st August 2013
 Start 11am at The Beaufort Arms
 Hawkesbury Upton

Hope you've been training
 To remind you

Start Door 1, The Beaufort Arms
 Door 2, St Mary's Church
 Door 3, The Somerset Monument
 Door 4, The Fox Inn. **Finish**

Anyone can take part walking or running take the Challenge.

Application Form
 available in The Village Shop
 call or e-mail

Carol Fowler 01454 238292 or kenfowlerbds@uwclub.net

Hawkesbury Cricket Club — July Fixtures

Below are the opening fixtures for this month.

Why not pop along and watch a match in the beautiful surroundings of the cricket ground? Give the teams some support and enjoy top quality cricket in your own village.

Mens 1st Team.

Sat 6th July	Away	Vs.	Cam CC - 2nd XI
Sat 13th July	Away	Vs.	Ullenwood Bharat CC - 1st XI
Sat 20th July	HOME	Vs.	Witcombe CC - 1st XI
Sat 27th June	Away	Vs.	Newnham On Severn CC - 1st XI

Gentlemen of Hawkesbury Team

Wednesday 26th June 6.00 p.m.	HOME	Vs.	Old Sodbury
Friday 12th July 6.00 p.m.	HOME	Vs.	Etwall Hawks (touring side from Derbyshire)
Sunday 14th July	Away	Vs.	Staple Hill
Sunday 28th July	HOME	Vs.	Stinchcombe Stragglers

A Thought

Never let pride stand in your way
 When your heart says you ought to forgive.
 For the chance, if not taken, may ne'er come again
 And you'll regret it as long as you live

Ann Harris

Quote for the day

Life is a mirror: if you frown at it, it frowns back; if you smile, it returns the greeting.

William Makepeace Thackeray

EEZEEFLOW

DRAIN CLEARANCE

Drainage problems – private and domestic

NO JOB TOO SMALL
 Regional Coverage

CENTRAL OFFICE
PHONE: 01454 238200
FREEPHONE: 0800 3893037
FAX: 01454 238713

Pest Problems

If wasps are a nuisance and bugs are bugging you -

Ring Hazel on
 01454 299227
 To solve your pest problems



Buskins Shoe Shop *Nailsworth*

- *Ladies shoes*
- *Mens shoes*
- *Bags & purses*

Tel: 01453 836836
www.buskins.co.uk

Summer Cricket Academy

A fun and enjoyable 5 day course for children with a passion for cricket



Each day will run from 9am-4pm. Players must bring a packed lunch and plenty of water, hats and sun cream!!



A games-based approach to learning, understanding and developing players at The John Hawkins Ground, Hawkesbury.

Players are given the opportunity to gain new and exciting experiences of cricket through high level 1-2-1 coaching

The cost of the course for players is £80 for the whole week or £20 per day. Book now as places are limited.



**George Setterfield (Coach)
ECB UKCC Level 2 qualified coach
MCCU Performance Analyst at Oxford University
Hawkesbury Upton Cricket Club 1st Team Captain**

For more details please contact:

email: george_setterfield@hotmail.co.uk

phone: 07557 959097

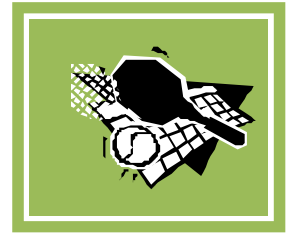
**12-14 Year Olds:
22-26 July**

**9-11 Year Olds:
29 July-2 August**

PLEASE NOTE AMENDED DATES TO REFLECT SOUTH GLOS SCHOOL HOLIDAYS



HAWKESBURY UPTON TENNIS CLUB



ALL WELCOME EVEN IF YOU HAVEN'T PLAYED BEFORE

CLUB NIGHTS

All are welcome to come up to the village courts to join in our Club Nights – see page two for details of days and times etc. We will do our best to include you at a level you feel comfortable with; so don't feel you can't just turn up. If you enjoy it then perhaps you might join HUTC and take advantage of some of the sessions that are available for all abilities.



JUST COME ALONG AND HAVE SOME FUN!!

Membership

Why not take out a Family Membership so that you can do something all together?

Family - £85

Adults - £47

Over 65s - £20

Full-time Students/unemployed - £20

Juniors [under 18s] - £20

Hawkesbury School pupils - FREE

OUR NEW MEMBERS

Following our Open Day in May, we are delighted to welcome our new members who have already taken part in some coaching sessions and joined in club nights. It's amazing how quickly you pick it up again when your racket has been tucked away under the stairs for so long.

DON'T BE SHY - JUST GIVE IT A TRY

For any adults who just fancy trying your skills on court but not on a club night, please contact Tricia [see overleaf for contact details]. We are looking for people to play at all levels and just for enjoyment rather than under any pressure. So we quite understand you may not want to play "publicly" until you've tried out your racket again.

Just let us know and we'll arrange something to suit you.

How to join HUTC

Please contact any Committee Member [see details overleaf] who will be able to help you should you wish to join before the summer comes and goes.

BOOKINGS can be made on the sheets in the Club Notice Board on the side of the courts. Keys for non-members are

Dog Harmony

Dog/Puppy Training, Behavioural Problems
Homevisits, Socialisation,
Dog Walking Service

Contact Je-An: 01454 238145 / 07540336508
email: info@dogharmony.co

www.dogharmony.co



Steve Green Photography



Wedding packages
from £250

Family Portrait Sessions
in your own home
from £30 inc free print



t: 07580 130 763

w: www.steve-green-photography e: steve@steve-green-photography.co.uk

Elaine's Coaching Sessions

ADULT ESSENTIALS

MONDAYS - 12.30-1.30pm

FRIDAYS 9.30-10.30am

WEDNESDAYS - 6.30-7.30pm

SATURDAYS 2.15-3.15pm

Match play drills & technical help for those already keen players.

SATURDAYS ADULT QUICK START 2.15-

3.15pm - For those with little/no experience

All Adult hourly courses: £25.60 - 4 wk block (£6.40) or £7 on the day.

All 45min courses: £20 - 4 wk block (£5) or £5.50 on the day. **4 wk blocks need not be consecutive.**

Members' discount on block booking - ring Elaine on number below.

Court Fees

Members - FREE: Non Members - £6.00 per hour/per court at peak times, £3.00 ph/pc at off peak. [Peak - all day Sat & Sun + 6.00pm till dark on all week days. Guests playing with a Member should please use the Honesty Box inside the courts. Guests' Fees: Adults - £2.00: Juniors/Students & Over 65s - £1.00.



SUMMER'S COMING DON'T DELAY

PARENTS - Please encourage your children to come up and prepare for the long summer holidays ahead. Details of the Holiday Clubs run by Elaine, our Professional Coach, are given above. However children can book courts at any time and play FREE OF CHARGE if attending Hawkesbury School. **PLEASE NOTE THOSE UNDER YEAR 6 MUST BE ACCOMPANIED BY AN ADULT.**

Elaine's Coaching Sessions

HOLIDAY CLUBS

During July & August school holidays

SCHOOL ESSENTIALS

Get to grips with the game

SATURDAYS

Years 2-5

1.30-2.15pm

U13s & U16s

SATURDAYS

2.15pm-3pm

WEDNESDAYS

5.15-6.15pm

TUESDAYS

2.30-4.30pm &

FRIDAYS

10-12noon

£8 per day.

Contact Elaine in advance to book in

Club Sessions

ALL MEMBERS WELCOME

MONDAY 1.30-3.00pm

MONDAY & THURSDAY - 6.30pm TILL DARK

SUNDAY 9.00-11.00am

Monday afternoon is for mixed abilities just for fun.

Monday evenings are for mixed doubles of all

abilities and a very sociable session. Sunday

mornings are slightly more serious for adults only

Committee Contact Details

Howard Bradley - Chairman - 01454 238761

howard.bradley@dexam.co.uk

Steve Berry - Vice Chairman - 01454 238273

steve@mountainkingdoms.com

Barbara Stephens - Secretary - 01454 238569

benwf2@nasuwt.net -

Jackie Huxford - Treasurer - 01454 238872

jackie@huxford.eclipse.co.uk

Ed Butler - Membership Sec/Men's Match Sec

07545 142696 edbutler.hutc@hotmail.co.uk

Bryony Edwards - Ladies' Match Sec - 07812

206256 miss Edwards@hotmail.co.uk

Tricia Perris - Publicity Officer - 01454 294768

cb-honsec-glos@therfu.com

Elaine Weightman - Club Coach - 07725 165181

elaine.weightman@homecall.co.uk



SPA

PLUMBING SERVICES

Steve Duke

23 The Buthay, Wickwar, S.Glos, GL12 8NW

t: 01454 299993 m: 07881 555883

TREE TRIMMERS

PROFESSIONAL TREE SERVICES

Our qualified and insured arborists undertake all aspects of tree, hedge and shrub work

For a free, written quotation and advice please call

01454 322823

07905 578993 or 07854 258341

Covering all of the Hawkesbury Parish area

Hawkesbury Cricket Club
The Gentlemen of Hawkesbury
Match reports by our cricketing correspondent Ed Riddington

NO MID SUMMER MURDER, BUT GENTS GET THE HILLESLEY ST BLUES

As George Harrison once sang 'All Things Must Pass,' and so it was that the Gentlemen of Hawkesbury's record-breaking unbeaten streak of three matches (one of which was abandoned halfway through, another rained off completely) came to a sorry end.

There was an aura of impending doom in the visitor's changing room at Hillesley before the game began, when it became clear that we had not got enough players. Despite the best efforts of Bernie Evans, we were unable to secure any guest players to make a full team. To make matters worse, our star all-rounder, Barry Wright, was mysteriously absent, despite strong rumours that he was one of the first to make himself available to play. We were indebted to a youthful trio of Olly Parker, Charlie Carnegie and Jonny Haywood for braving a game of senior cricket.

On a perfect afternoon for a match, we found ourselves in the field first. Debutant Richard Parker, in his first game for 15 years, opened the bowling but injured his leg in his opening over. Tim Chancellor took over from the pavilion end and tempted a certain M. Vaughan out of his crease, giving Dean Simmonds the first of two razor-sharp stumpings. The Swann-like Evans picked up a wicket in his first over and, when Richard Parker bravely returned to bowl a seven over spell, Hillesley were reduced to 60 for six after twenty overs.

Howard Bradley, bowling more accurately than ever before, maintained the pressure on the home side, securing a leg before wicket and frustrating the combined talents of George Bailey and James Crighton, who were both looking to take the game away from us. Haywood, a talented young spinner, took his first wicket in senior cricket when Sean Hopson held a catch to remove Crighton. It was a just reward for a gutsy spell of bowling that rarely faltered in line and length. The innings ended when Simmonds - with the deft touch of the Artful Dodger - stumped Bailey, leaving Hillesley stranded on 145 all out, with four overs of their innings remaining.

Egg sandwiches, tea, coffee and walnut cake under sunny skies. In the immortal words of Greg Wallace: cricket doesn't get tougher than this.

Needing to score at just under four an over, the Gents were propelled forward thanks to two lusty blows off consecutive balls from Hopson. Sadly, his innings was halted by a ball that sneaked between his pads to the stumps. The run rate soon reduced to three an over, but Tim Chancellor built a solid platform, featuring in two sound partnerships with Martyn Foster (44 for the 2nd wicket) and Simmonds (50 for the third). When Chancellor was out for 52 in the 34th over, the Gents needed to score at a run a ball to see them home. Sadly, the nagging accuracy of Andy Starling and his team stemmed the flow of runs and the Gents were left 11 runs short.

The bitter, but unfamiliar taste of defeat, was soon replaced by the bitter, but very familiar taste of bitter.

For the Gents, this match was a heart-breaking tale of unrequited love. Despite encountering six maidens, four from Ed Riddington alone, the Gents failed to respond to the thrill of the chase and, more worryingly, the search is still on for Mr Wright.



**PATIENTS REWARDED AS RUNS PROBLEM CURED
WITH CLINICAL WIN OVER FRENCHAY HOSPITAL.**

Rumoured sightings of a 19th century tea clipper in full sail proved to be untrue on June 9th. Instead of the Cutty Sark, maritime enthusiasts at Hawkesbury's ground witnessed 14 players moving the new sight screen twenty paces to the left in readiness for the Gents' next match against Frenchay Hospital.

In a 999 emergency after our runs problem at Hillesley, we were treated by two of the three players who ironically do not have both A and E in their name: a specialist opener, Pete Roberts, and Barry Wright, who - in Bowie-esque style - has reinvented himself as a middle order batsman, albeit without the Ziggy Stardust lightning bolt over his beard. (The third player with A and E in his name? Joss White, whose game finished early with a minor injury.) Wright and Roberts put on an impressive 76 for the 3rd wicket, following the loss of Sean Hopson and Martyn Foster. Roberts went on to score piles of runs, his 85 being the highest by a Gent in living memory. Wright, batting higher up the order than at any time since the reign of George VI, elegantly compiled 25 runs. Both were out in quick succession, bringing together the father/son combination of

 **Health and Sports Therapies**
Hayley Jackson MCFHP MAFHP
Foot Health Professional

A small well established business based in Brimsham Park, Yate. A full range of Foot Health Treatments including:

- Nail Cutting
- In growing Toenails
- Verrucae
- Corns and callus
- Heel Fissures (*Cracked Heels*)
- Nail conditions

Tel 01454 314460/07846452000
www.hjtherapies.co.uk / Email: hayley@hjtherapies.co.uk
Home Service now available
Introductory offer - £10 off your first treatment
Offer ends December 31st 2013

**Holiday Home to Rent
in the Dordogne**

In beautiful village of Jumilhac le Grand,
sleeps 8-12. All mod cons, enclosed garden.

From £420 p.w.

For more information email
jane@thestanbridges.fsnet.co.uk or
call 07790 888321

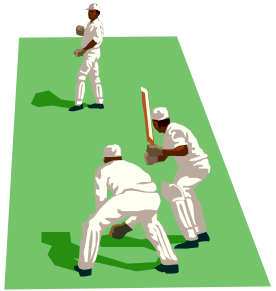
Bernie and Jamie Evans, who were also out, but in quicker succession, bringing in Edward Riddington and Howard Bradley. This pair combined to enjoy a stand of 68 for the seventh wicket. To the astonishment of one and all, the Gents closed on 229 for 6.

A stunned group of players ate their chocolate cake, washed down by tea with the finest organic milk, occasionally pinching themselves to make sure that they were not dreaming.

The second half of the match was more astonishing than the first. In front of a capacity crowd that had filled the bench in front of the scoreboard, William Cullen embarked on a spell of bowling that will long be talked about by those privileged to witness it. Reminiscent of Michael Holding's brutal spell against Geoffrey Boycott back in 1981, Cullen's first ball, a perfectly executed 35mph full toss flighted wide of off stump, proved to quite unplayable, resulting in the Frenchay opener playing on. Cullen outwitted two more players with his expert variation of over-pitch and long hop. Riddington claimed two wickets and Frenchay's top five were out by the end of the seventh over. Sam Beeley soon got in on the act, with 2 wickets in five balls and, when Bernie Swanny-Evans found the stumps in his first over, Frenchay were reduced to 27 for 8. Dunford, batting at nine, led a recovery, finishing on 56, the next highest scorer making 9. An athletic diving catch from Jamie Evans brought the innings closer to its conclusion, with the Gents securing an emphatic win of 118 runs, their first home win since 2010.

Selectors for the next match have the same dilemma that England had in the 90s. Should they stick with the specialist keeper, Simmonds, batting down the order? Alternatively they could pass the gloves to their opening batsman, the more vocal Hopson. As with Alec Stewart before him, keeping wicket may affect his performance with the bat.

If you are interested in playing for the Gents, please contact Bernie Evans on 01454 294202.



The Farm Shop at Hawkesbury

A J Morgan Farm Produce, France Lane Farm, Hawkesbury Upton, GL9 1AN.
01454 238215/07929 947149

NEW SHOP NOW OPEN

Organic Non-Homogenised Milk, Cream & Yoghurt

Ice Cream & Cold Drinks

Fresh Vegetables

Bread from Walker's Bakery, W-U-E

Fresh Free Range Chicken

Home Cured Bacon, Gammon Steaks & Hams

Aberdeen Angus Beef, Pork & Lamb Joints

Cooked Ox Tongue, Salt Beef, Ham,

Gluten Free Sausages

Lamb & Beef Quarterpounders, BBQ Ribs

Home Baked Pies, Hawkesbury Faggots, Chorizo, Salami

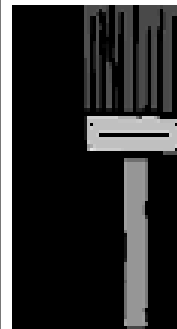
Cream Teas (weather permitting) Sunday's 2pm-5pm



- Home boarding
- Day care
- Dog walking

A friendly and reliable service covering Wotton-under-Edge and surrounding areas. Fully licensed and insured.

Call Steve on 01453 842167 or



BRILLIANT WHITE **DECORATING**

Professionals too expensive!!!
THINK AGAIN!

**I am experienced, fully insured
and offer great value in decorating.**

For Free Advice & Estimate
Contact Jackie White-
01454 238555 [mob: 07805 266520]

**ST. MARY THE VIRGIN,
HAWKESBURY, GL9 1BN**

*(Take the A46 Bath - Stroud Road, heading towards Stroud.
Take a left to Hawkesbury Upton opposite the Badminton turn-off
and follow directions to Hawkesbury).*

FLOWER FESTIVAL



Saturday, Sunday and Monday

27, 28, 29 July 10am-1pm. 2pm-4pm

Entrance £.2.50 Children free - to include programme

***TO BE OPENED BY TREVOR FRY OF
RADIO BRISTOL ON FRIDAY 26.7.13 AT 6PM***

**Musical Preview with refreshments on
Friday 26 July at 7pm. Tickets £7.50**

01454 238553

Sunday 21st July 2013

Enjoy Jazz on the Lawn



at Church Farm House, Hawkesbury
(opposite St Mary's)

12 noon – 5pm

Music from French Connection and The Cat's Pyjamas

Pimms, beer, wine and hog roast available

or

Bring your own picnic + chairs and rugs

£10 (children free)

In aid of the Friends of St Mary's

Tickets (in advance please) from

Linda Fairney 01454 238553 or Pauline Setterfield 01454 238307



mattsummersfurniture

hand-built fitted and
freestanding furniture

contemporary or traditional design
hardwood or softwood

contact Matt to discuss your ideas

t:01453 861623 m:07879 638927

visit mattsummersfurniture.co.uk for more information

JCM Shooting Supplies

Shotgun Cartridges Now in Stock.

Also - Clothing, Shooting Accessories

&

NEW Starter Kits!

Visit: www.jcmsupplies.oxatis.com

E-mail: jcmsupplies@yahoo.co.uk

Call: 07833 627 810

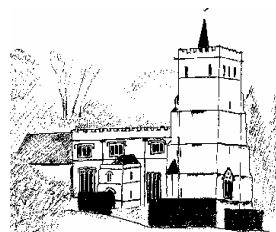
To advertise your company
or services in the
Hawkesbury Parish News,
email us at

[parishnewsads@
hawkesburyupton.com](mailto:parishnewsads@hawkesburyupton.com)

and reach a wide
local audience.

St Mary's Church News

Churchwardens Mrs Linda Fairney 238553 & Mrs Mary Davies 238657
 Keys for cleaners/flowers/church sitters please contact Mary Davies 238657
 if possible the day before to arrange for collection.



““Unless the Lord builds the house, its builders labour in vain.” Psalm 127 : 1

Most of June's activities have not yet happened at the time of writing, so I can't report on them, but I will remind you of two forthcoming events for July, in case you miss them elsewhere in the Parish News! They are: Jazz on the Lawn at Church Farm House on Sunday 21 July from 12 noon to 5 pm, with thanks to Lady White for hosting it, and to the Friends of St Mary's for organising it; and the flower festival from 26-29 July, with a preview and music on Friday 26th at 7 pm, tickets £7.50. Book these dates now

On a more mundane note, Mary Davies would be very glad of help with cleaning the brass in church. She is currently doing this alone, and looks forward to someone joining her, only once a month, and if there are several offers of help, it could be just once every two or three months. Please consider whether you might be able to take on this light task, no heavy lifting involved!

Finally, another appeal for people to church sit on Sundays during the summer months, as well as during the flower festival, so that the church can be open to visitors. This is an enjoyable contribution to the life of St Mary's. It means being there to talk to visitors, to tell them something about the church and its history (if they want to know), and to offer them tea and cake. If no-one comes, it's an opportunity to catch up with reading or planning the week ahead. If you would like to be included, please contact Betty Salthouse, 238410, who is arranging the rota to suit you

Dates for your diary

Sunday 21 July – Jazz on the Lawn – Church Farm House – 12-5pm
 Friday 26 July – Flower Festival preview with music and refreshments
 26-29 July, Friday-Monday – Flower Festival

Jennifer Oldershaw

Church Services in July 2013 For St. Mary's Church

Date	Time	Service	Readers	Readings	Sidesmen
02nd July	0845 am	Holy Communion (St. Peter)			M Beresford
07th July	0945 am	Morning Praise - Communion			21st July Betty Salthouse
14th July	6 pm	Evensong	J O'Brien		B Stephens
			J Gardener		
21st July	0945 am	Morning Praise (Common Worship)	M Bendry D Musty		H Rogers
28th July	6 pm	Flower Festival Choral Evensong	W Fairney		L Fairney
			P Bendry		
4th August	0945 am	Morning Praise - Communion			M Beresford
11th August	6 pm	Evensong	J Oldershaw		A Craig
			G Morgan		

If you are unable to attend please telephone Linda Fairney: 01454 238553
 Should you wish to speak to Rev Richard Thomson call 01454 219236 or Revd. Alveen call: 01666 890 548

Church Cleaners:

Claire Morgan
 Annette Trinder

Church Flowers:

M Beresford

Friends of St Mary's



Here to raise money towards the upkeep of the fabric of our beautiful Grade One listed church, to safeguard it for generations to come.

Forthcoming events:-

Sunday 21st July – Jazz on the Lawn at Church Farm House. A lazy Sunday afternoon for all the family in a beautiful setting. Large garden for children to play in. Hog Roast. Beer and Pimms and wine tent. Music from French Connection and The Cat's Pyjamas. See poster for full details.

Saturday 31st August – Pimms Tent at the Show

Saturday 12th October – FOSM Annual Ball. Just confirmed that The Raize will once again be playing. Note the date in your diaries now!

Annual members, please note subscriptions are due on 1st August. Renewal reminders should be with you by the time you read this. Anyone wishing to become a member of the Friends of St Mary's, please contact me on the number below or contact treasurer Neil Fozard on 238281.

Annual fees are £7.50 single or £10 for joint membership. You do not have to be a church-goer to become a Friend of St Mary's. The purpose of the Friends is to help raise money towards the upkeep of the building and fabric of the church.

o O o

Pauline Setterfield – FOSM Secretary

Tel: 238307 pleensetterfield@hotmail.com

Hawkesbury After School Club



**Monday to Thursday
2.30 to 6pm**

All children from Hawkesbury and neighbouring schools are welcome to come along and enjoy our activities. We aim to provide quality childcare at an affordable price and to offer a place where children can play freely and interact socially in the care of trained playwork staff.

If you book regular sessions in advance the price is £9 for your first child and £6 for each sibling. If you would like to book your child in for a one off session, the cost is £10 per session for the first child with siblings costing £7. These sessions are subject to availability.

All sessions can be booked by either dropping in to a session and having a chat with Louisa, our senior playworker, calling the ASC mobile on 07527 224741 during club hours, or call the school office during school hours.

If you would like to know more about After School Club call me, Kim Anderson on 01454 238799 and I will be happy to help.

TRADITIONAL STONEMWORK & POINTING SPECIALIST

- Dry Stone Walling
- Brickwork & Blockwork
- Block Paving
- General Building
- Stone Tiling

STEVE GREEN

01454 238454 (after 5pm)
Mobile: 07813 245550

MORGAN Plastering Services



INTERNAL/EXTERNAL
RENDERING
ALL FINISHES
COVING
DRY LINING
RELIABLE SERVICE
15 YEARS EXPERIENCE

Call now for a quotation
01454 850294
MOBILE 07909 937226

Fancy a break in North Cornwall.....?

Our apartment is adjacent to the North Cornish coastal path, with access to stunning beaches. With 2 bedrooms/ bathrooms, it is our special retreat and has all the comforts of home.

For rental details, please contact Chris on 01454 232927 or email chrissav5@yahoo.co.uk.

BETHESDA CHAPEL

PARK STREET, HAWKESBURY UPTON

Services for the month of July 2013

<i>Sunday July 7th</i>	<i>10.30am</i>	<i>Mr Ray Hollister [C]</i>
<i>Sunday July 14th</i>	<i>10.30am</i>	<i>Rev. P Hopes</i>
<i>Sunday July 21st</i>	<i>10.30am</i>	<i>Mr Munir Din</i>
<i>Sunday July 28th</i>	<i>10.30am</i>	<i>Mr and Mrs Gillard</i>

BETHESDA ADVENTURERS MEET DURING THE SERVICE

Tuesday 2nd at 7.30pm – A Time of Worship and Prayer

Other Tuesdays 7.30pm Bible study/prayer

Thursdays at 2.00pm – Prayer for Revival



The writer to the Hebrews in Chapter 1 vs. 10-13 says this.....

“In the beginning, O Lord, You laid the foundations of the Earth, and the heavens are the work of your hands. They will perish, but you remain. They will all wear out like a garment, You will roll them up like a robe, like a garment they will be changed. But You will remain the same, and your years will NEVER END!

What a mighty God we have!

M. C. Coates [Chapel Secretary]

THE METHODIST CHURCH

BACK STREET, HAWKESBURY UPTON



Services for July 2013

Sunday July 7 th	9.45am	Morning Praise at St Marys
Sunday July 14 th	10.00am	Mr Howard Wilson <i>Sunday Club for children attending</i>
Sunday July 21 st	9.45am	Morning Praise at St. Mary's
Sunday July 28 th	10.00am	Rev Hilary Cooke - Holy Communion <i>Sunday Club for children attending</i>



PUMPKINS NURSERY

Badminton and Tormarton

Nursery care and pre-school education catering for children aged 1 – 5 years
Open all year 8am – 6pm

Nursery Education Grant funded sessions available

Forest School sessions run at both settings

For more information or to request a prospectus contact Amanda Wallis on **01454 219400/218747**

Or visit our website: www.pumpkinsnursery.co.uk

DOLPHIN WATER SOFTENERS LIMITED

*Alderton 4, Priory Park, Priory Industrial Estate,
London Road, Tetbury, Glos. GL8 8HW*

- **Tablet Salt** - £8.25 per 25kg bag
- **Granular Salt** - £8.25 per 25kg bag
- **Block Salt** (Harveys & Kinetico) - £4.70 per 2 x 4kg blocks

Available for collection from 1-5pm Monday to Friday *or* delivery service available within a 10 mile radius of Tetbury
FOR MORE DETAILS – Tel: 01666 500065 Fax: 01666 504911

Email: ngjkind@btinternet.com

Hawkesbury Parish Council

Planning Applications received :

App. No.	Address	Description	Comments
PK13/1065/F	Ingle Cottage Oxleaze Farm Road Inglestone Common	Erection of single storey front and rear extension to form additional living accommodation	See below
<p>Comments; No objection to the planning application, the Parish Council asked "Please ensure the drainage measures up to the required building control requirements (bearing in light of the public's alleged inadequacy re the existing sewage arrangement), this therefore requires investigating"</p>			
PK13/1148/F	Kosy Kot France Lane Hawkesbury Upton	Erection of single storey rear extension to form additional living accommodation	See below
<p>Comments; Site and location plan shows an angle to the new extension on the boundary; but the detailed plans shows squared; which would subsequently encroach on the neighbour's garden. Concerns re the windows in the new porch (not shown on the location plan) directly facing out on the neighbour's garden. Take into account the neighbours comments</p>			
PK13/1580/F	Flexor Farm Orange End Inglestone Common South Gloucestershire GL9 1BP	Change of Use of Land from agricultural to residential. Erection of single storey side and front extension to form additional living accommodation.	
<p>Comments; The Parish Council Object to this planning application for the following reason; From previous history and to the best of their knowledge they understand there is an agricultural tie to this property, which would render this application invalid (see reference to number 25 Certificates Agricultural Land Declaration of the planning application form). "(A) None of the land to which the application relates is or is part of an agricultural holding" has been completed. The Parish Council consider it is very important that this agricultural tie is kept for future generations of agricultural workers. The new extra residential curtilage is taking away agricultural land from this property. The increase of the residential footprint of the building appears to be 87% which is disproportionately large (based on the figures provided see 2.7 of the design and access statement). The drawings do not show the first floor room on the existing building or stairs to it. Is this the second bedroom as stated elsewhere but not accounted for in the drawings.</p>			



The Latin-inspired, easy-to-follow, calorie-burning, dance fitness-party™. Feel the music and let loose!!!

**Monday 6.30 - 7.15 pm—The Club Room,
Gloucester Street, Wotton**
**Tuesday 6.30 - 7.15 pm—Horton & Little Sodbury
Village Hall, Horton**
Thursday 6.30 – 7.15pm—Charfield Memorial Hall, Charfield
For more details contact:-
Andrea on 07970125353 or andrea.benson1@btinternet.com



Ladies!! Do you want to improve your posture, strength, mobility and stamina?

Then Join a Fitness League Exercise Class!

**Monday 7.30 - 8.45 pm—The Club Room,
Gloucester Street, Wotton**
**Wednesday 6.45 - 8.00 pm—Almondsbury Sport &
Social Centre, Almondsbury**
For more details contact:-
Andrea on 07970125353 or andrea.benson1@btinternet.com

Hawkesbury Parish Council (continued)

Planning Decisions

PK13/1065/F	Ingle Cottage Oxlease Farm Road Inglestone Common	Erection of single storey front and rear extension to form additional living accommodation	Approve with conditions
PK13/1148/F	Kosy Kot France Lane Hawkesbury Upton	Erection of single storey rear extension to form additional living accommodation	Withdrawn
PK13/1286 /TCA	Londesborough High Street Hawkesbury Upton	Works to remove 1no. Leylandii tree in the Hawkesbury Conservation Area	No Objection

Parish Council Meeting

The next Parish Council meeting will be held on Monday 1st July 2013 in the upstairs meeting room in the Village Hall at 7.30pm.

Contact details for Hawkesbury Parish Council via:

Hazel Jones
Parish Clerk
2 Fox Close, Hawkesbury Upton, GL9 1EQ
Tele: 01454 238074
parishcouncil@hawkesburyupton.com

Beautifully restored 18th century house near Hautefort Dordogne France

Available to let all year round. A very attractive and sympathetically restored former farmhouse. Sleeps 10/12 in 5 Ensuite bedrooms, generous living accommodation & private heated pool. Fully equipped to a high modern standard whilst retaining a wealth of original features. Set in the heart of the quiet hamlet of Lachaud surrounded by glorious open countryside but less than 10 minutes drive from local shops & restaurants. You'll be perfectly placed to explore this beautiful & historic area or just relax, unwind & indulge yourself! Pets with responsible owners are most welcome! For more pictures & further details visit: www.holidaylettings.co.uk/479522.



PAINLESS SPINAL TOUCH

POWERFUL • GENTLE • PROFOUND

FROM THIS



STRESS & STRAIN
EXHAUSTION
MALFUNCTION

TO THIS



EASE & FLUIDITY
JOYFULNESS
VITALITY

Restores the natural equilibrium by re-aligning the body with its centre of gravity. Release from pain and an increased sense of well-being inevitable follow.

ANGELA ECKLES 01454 238 894 / 07947862 622
30 years experience in natural therapies

Camping in **CORNWALL** this year?

TREVAYLOR CARAVAN & CAMPING PARK

75 Camping pitches and 7 luxury Holiday Homes

Owned by Charlie & Michelle Blaken

with their children Eva & George

(ex-farmers from Hawkesbury Upton)

Ring for locals discount!

500 metres from stunning coastline Check us out!

www.cornishcamping.co.uk

District Councillor's Report

South Gloucestershire - A great place to live and grow old

South Gloucestershire residents are likely to live longer than almost anyone else in the country.

Data released by the Department of Health showed that South Glos had the fifth lowest rate of early death (before 75) out of 150 council areas looked at. The data looked at common causes of death - Cancer, heart disease and stroke, lung disease, and liver disease. In every single category, South Gloucestershire residents were comfortably ahead of the rest of the country.

This confirms what many of us have known for years: South Gloucestershire is an excellent place to live and grow old. We have beautiful open spaces to enjoy, a range of cultural activities, and we're very healthy. However it doesn't mean we should rest. We've just taken on more powers to promote healthy living in South Gloucestershire,

Transport

Thank you to all those people who responded to the consultation on the local bus service. At a recent meeting the Planning & Transport Committee agreed to the tenders for our local 84/86 Bus Service, as well as continued support the 620 which leaves from Old Sodbury for Bath. Although there is no addition to the service, there will be tweaks to the timetable to enable better reliability.

A direct public transport from Yate to Southmead Hospital is still being discussed. There is a petition to call for a direct route from Yate, this can be signed on line or please contact me- hopefully copies in the Post Office.

Frome Vale Area Forum – the next meeting will be on the **11th July, 7.00 pm at Shireway** Community Centre, Yate. There is always a public forum session, and the agenda includes a presentation on **future developments at Yate Shopping Centre, including plans for the new cinema**. Also items on how the Council can better engage with residents. New Homes Bonus monies will be allocated by local councillors. All are welcome to attend.

The Commons

Many residents are unhappy about a recent letter regarding the storing of wood and other encroachment infringements on the Commons. I understand a further letter, together with a map, will be sent to residents, reaffirming the removal of woodpiles and other encroachments. I have shared my concern with officers regarding this approach.

The South Gloucestershire Council contact officer, Mike Plumb, who must be thanked for the sterling work he has done over the last few years will be leaving the Council at the end of June. Sally Pattison, will be the officer who will be the temporary contact until a permanent appointment is made.

Broadband Update

There is slow progress on the delivery of superfast Broadband to our rural areas.. The areas which will definitely receive state subsidy have been identified, but it is not yet clear how these are to be prioritised.

Armed Forces Day

Too late, for the magazine, I am afraid, but the Council is committed to this annual commemoration, which this year was taking place at Staple Hill on 29th June.

Perhaps now is the time to start thinking of how the community will remember The Great War. The Guides held a wonderful and informative exhibition last year, and I understand the local branch of the Royal British Legion is already considering this.

Grass cutting.

As part of the Localism Act and also with budget implications, South Gloucestershire Council is proposing to limit the highway grass cutting and to charge for dog bin collection. Parish councils have been asked to consider this, and decide what level service they want for the parish. The local parish council will be holding a drop in session for residents to learn more.(Advertised in this Magazine).

Public Rights of Way

South Gloucestershire Council has published some helpful guides for parish councils and landowners, outlining the rights and responsibilities relating to Public Rights of Way. There are also leaflets advising on how to mark paths when fields are ploughed and cropped, as well as guidance on enforcement as well as the policy on Public Right of Way enforcement. The leaflets are available on www.southglos.gov.uk and I have asked for some to be sent to the Parish Council. Please let me know if you would like further information.

Cllr Sue Hope

01454 238673

sue.hope@southglos.gov.uk

MADE TO MEASURE	
CURTAINS & BLINDS	
CHOOSE IN THE COMFORT OF YOUR OWN HOME	
<i>Large Selection of Fabrics</i> Full range of blinds: Verticals, Venetians, Rollers, Velux Blinds Tracks & Poles – Customer's Own Fabric Make Up Measuring & Fitting	
Call Grant on: 01453 521751, 07799 822691 or Email: gb_at_home@yahoo.co.uk For a no obligation quote	
<i>A local service with 20 years experience</i>	

 at home CURTAINS & BLINDS Charfield, Wotton-under-Edge
--

JOHN DAY ENGINEERING

All types of mowers serviced & repaired Free local collection & delivery All fabrication & wrought iron work undertaken Gates, fencing, lighting etc.
Please tel: 01454 238365 or 07947 636308



Organic Blooms

Latteridge Road (Latteridge Hill), Latteridge, Bristol, South Gloucestershire, BS37 9TS

Opening dates and times: Sun 14 July (12-4)

Admission: Adm £3, chd free

Refreshments: Light refreshments

Contact: Jo & Chris Wright

Location: 5m W of Yate. 6m from J16 of M5, on B4059 that runs between A38 and Iron Acton. Look for green corrugated steel fence that borders site and main road. Approx 200 metres from Latteridge duck pond and green, heading towards A38

Website: www.organicblooms.co.uk

Description: Working cut flower nursery run as social enterprise. We specialise in growing traditional cut flower crops from sweet williams and anemone to zinnias, dahlias and sweetpeas. Flowers are grown using organic principles. Hand-tied bouquet demonstration. Tour and talk on organic gardening

Disability information: Our paths are woodchip, so access may be more difficult in very wet conditions

Camers

Old Sodbury, South Gloucestershire, BS37 6RG

Opening dates and times: Sun 28 July (2-5)

Groups of 20+ welcome by appt Feb to Oct. Small parties may enter directly from A432

Admission: Adm £4, chd free

Refreshments: Home-made teas

Contact: Mr & Mrs A G Denman Telephone: 01454 322430

Email: dorothydenman@camers.org

Location: 2m E of Chipping Sodbury.

Entrance in Chapel Lane off A432 at Dog Inn

Website: www.camers.org

Description: Elizabethan farmhouse (not open) set in 4 acres of constantly developing garden and woodland with spectacular views over Severn Vale. Garden full of surprises, formal and informal areas planted with very wide range of species to provide yr-round interest. Par-terre,

topiary, Japanese garden, bog and prairie areas, waterfalls, white and hot gardens, woodland walks

Disability information: Some steep slopes



Monday 1 July 7.45pm

Shakespeare's Globe: **Twelfth Night**

Tickets: £10.00

Filled with a cast of unforgettable characters, **Twelfth Night** is a moving comedy of loss and misplaced love and includes some of the most exquisite songs Shakespeare ever wrote. The all-male production, exploring clothing, music, dance and settings possible in the Globe around 1601, stars award-winning Mark Rylance and Stephen Fry. **Twelfth Night's** sell-out performances led to a hit run in London's West End.

The third Globe production will be **The Taming of the Shrew**, screening on Monday 29 July.

Sunday 7 July 11am - 5pm

Birthday Party

The Wotton Cinema opened 100 years ago, so we are having a huge birthday party to celebrate! The streets will be closed, there will be over 40 stalls, live entertainment as well as old films in the cinema - and much more. Come and celebrate the day when moving pictures first came to Wotton-under-Edge!



Winterbourne Medieval Barn

6 July - Mozart's Don Giovanni will be performed in the Barn by **Tessitura Opera** at 7.15pm. Grounds open at 5.30pm for picnics. Tickets £10 from 07967 991902.

24 July - free Talk by Dr Chris Heal on the local hatting industry entitled "**The Great Hatting Strike of 1834-5: Christy's foul design to crush the liberties of the Hatters**". The talk starts at 7.45pm and will follow the AGM of WMBT and refreshments at 7pm.

10 Aug - Shakespeare's comedy A Midsummer Night's Dream will be performed in the Barn by The Festival Players at 2.30pm. For tickets £12.50 adults, £9 children/ students ring 01454 772285.

Further details are available on the website www.Winterbournebarn.org.uk

Mikki's
09790 868751

Mobile Clipping

mikki.ponter@btinternet.com

- * Bathing (Hydrobath)
- * Drying
- * Clipping / Scissoring
- * Hand Stripping
- * Ear Cleaning / Plucking
- * Nail Trimming

ALL BREEDS WELCOME

Dog walking / sitting also available

£ Competitive Prices



Mikki's
09790 868751

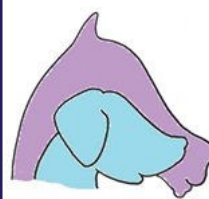
Mobile Clipping

mikki.ponter@btinternet.com

- * Neck & Belly
- * Low Trace
- * Chaser
- * Blanket
- * Hunter
- * Full
- * Mane / Tail Pulling

Tack cleaning service also available

£ Competitive Prices



Armed Forces Day on the 29th of June 2013

Venue; Yate Library
Time 10.00am to 5pm

This is a Free Event and open to all

The day begins at 10.00am with a morning aimed at children and young people to provide an opportunity to make thank you cards and posters to members of the armed forces both past and present. These cards will then be displayed before forwarding them onto members of the armed forces.



From 3pm the Author Jake Wood will be speaking about his book "Among You" and his experiences (supported from footage taken by Jake in Afghanistan) Some of you may be aware of Jake from his appearances on national TV and media coverage. I have attached copies of articles taken from the media, apologies but the attached are in PDF format and were supplied by Jake's publisher.

The event is staged in partnership between CVS South Gloucestershire, South Gloucestershire Council, and Yate Town Council. I do stress that there will be no major parades as a part of this day but if anyone is interested in attending an event where there will be parades then an event will be held in Downend on the same day. More information can be found on the South Gloucestershire Website.

WOTTON ELECTRIC PICTURE HOUSE



STREET PARTY

SUNDAY July 7th 11am to 5pm



Over 40 stalls...live music, stilt-walkers, street entertainment, Punch and Judy plus lots more. Call into the cinema and meet the team and see how a digital picture-house work. Do come and join the fun.

Westonbirt House Garden

7th July - 8th July
22nd July

14th July - 15th July
29th July

Westonbirt House near Tetbury will be opening its heritage Italianate Gardens, ornate Camellia House, beautiful grounds and Saxon Church.

2pm - 5pm entry £5 at Honesty Box, under 12s Free, to include refreshments.

Westonbirt House Open Day and Gardens NGS 28th July

Westonbirt House near Tetbury will be opening its House for guided tours and its heritage Italianate Gardens with ornate Camellia House, beautiful grounds and Saxon Church.

11am - 5pm entry £8, under 12s Free, to include refreshments.

Further information Tel: 01666 881373
email: aparr@westonbirt.org

Clare Teal back for Christmas

Following Clare Teal's huge success at the Sodbury Jazz Festival on 1st June the reaction has been ecstatic. "Brilliant... it was a wonderful evening... we should have more like this in Chipping Sodbury".

And now there will be because, following a post-concert conversation with the organisers, Clare has agreed to return in December with her famous Christmas Show.

'Clare Teal's Festive Fiesta' – a unique blend of seasonal swing, cheeky latin grooves, humour and, to add a little romance, a smattering of cozy fireside ballads, comes to Chipping Sodbury Town Hall on the evening of Wednesday 4th December.

Tickets priced £20 can be ordered by calling 01454 34410 or by email to info@visitchippingsodbury.com.

Contact: Mark Lloyd, Chair. T. 01454 334410
e. info@visitchippingsodbury.com

Jazz Festival Contact: Stuart Hobday. T. 01454 310246 e. stuartmhobday@yahoo.co.uk

The South Cotswolds Beer Festival 12 to 13 July 2013

100% Charity Fundraising Event organised by Yate & District Rotary Club. Held at the Rugby Ground, Chipping Sodbury, Bristol.

W: www.bs37.com/beer/



MIND & BODY MATTERS

PILATES Monday 7.30pm Didmarton Village Hall

Wednesday 7.15pm Westonbirt Leisure centre

CIRCUIT TRAINING Monday 8.30pm Didmarton Village Hall

LBT (legs,bums,tums) Wednesday 9.00am Didmarton Village Hall

For more information regarding classes Personal Training, Weight Management or Massage please email or give me a call.

TOGETHER WE CAN MAKE A DIFFERENCE

Contact Ruth Carnaby - 01454 238733

Email ruth@bodymatters1.co.uk www.mindandbodymatters.net

LA LUNA AROMATHERAPY

A holistic and natural approach to wellbeing



Take time for yourself to de-stress from a busy and demanding life-style, regain vitality and enthusiasm for your wellbeing, optimise your natural healing processes and immunity

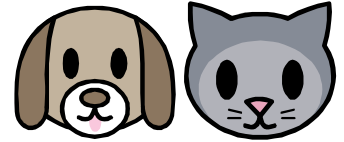
Explore how natural therapeutic treatments can be effective in the treatment of acute and long term debilitating health conditions.

Mary Chancellor LDCA, MIFPA Tel: 0759 200 6440

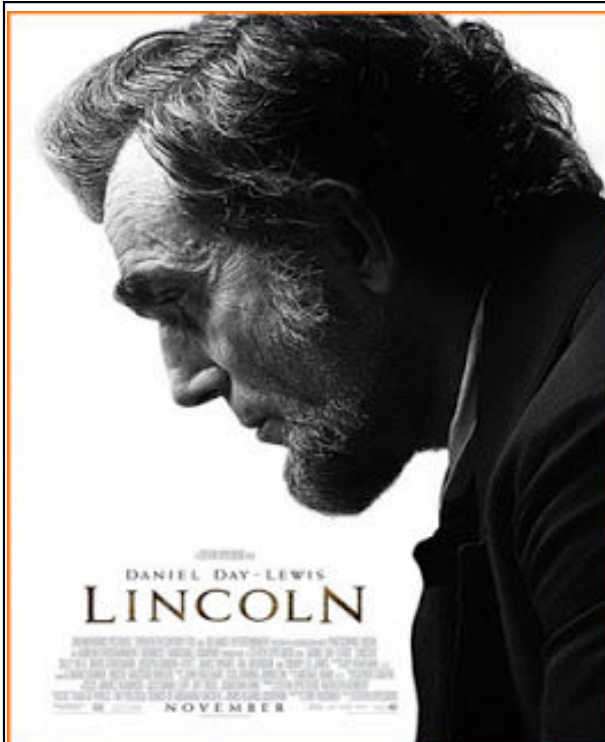
E: mary@laluna-aromatherapy.com www.laluna-aromatherapy.com



Babysitting, Dog Walking and Pet Sitting



Natalie Atkinson	01454 238858	I am a reliable and experienced 16 year old available for babysitting on most week days (june to september), evenings and weekends anytime.
Cerys Bradley	01454 238761	19yr old, experienced babysitter available all day and/or evening for child minding or mathematics tutoring (up to and including GCSE level).
Caroline Carnegie	60 Highfields 01454 238918	14yrs old. Available for dog walking and babysitting.
Charlotte Carnegie	60 Highfields 01454 238918	20yrs old. Available for baby sitting, dog walking and pet minding.
Katie Munro	01454 238 174	I am a 16 year old experienced babysitter (references can be supplied). I am reliable and trustworthy and love working with young children. I am available most evenings and weekends term times and at all times during the school holidays.
Libby Musty	01454 238118	I am 15 years old. I am an experienced babysitter and pet-sitter and am available during weekends (in term time) and most days during the holidays.



**Didmarton
Village Hall**
7:30pm
Friday 12th July 2013
Cash Bar from 6:30pm
£3 from
Jenny.body@virgin.net
or 01454238358
Or £3.50
on the door

Tortworth Vintage Transport Show

27th & 28th July 2013

Showground off the B4509,
Wickwar,
South Gloucestershire
(Nr. Bristol) GL12 8LF

Steam Engines,
Displays, Collections,
Farm Tractors, Fair Organs,
Fairground, Military
Vehicles, Vintage & Classic
Cars, Period Caravans,
Motorbikes, Commercial
Vehicles, Auto jumble.

For full details please see
the website -

www.shakespearesrally.com



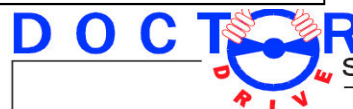
JOHN H WALKER

**GARDEN
SOLUTIONS**

Garden makeovers. Lawn cutting and
Maintenance, Turfing, Patios, Ponds,
Water features, Decking, Hedge Cutting
Fencing, All shrub work, Clearing,
Driveways, & Planting.
All aspects of garden work undertaken

**TAKING NEW BOOKINGS
FOR THE LAWN MOWING
2013 SEASON NOW.
CONTRACT BASIS OR ONE OFF.**

LANDSCAPING & GARDEN MAINTENANCE
EST. 1999
TEL: 01454238865
MOBILE: 07974933398



school of motoring

FREE Theory Preparation

Block Booking Discounts

Competitive Rates

High Pass Rate

Start Learning at 16

Pass Plus = Cheap Insurance



For More Info Contact Chris

01454 238693

07970 274373

www.doctordrive.net



Electric Picture House

Run for the community by the community

**Offering you the latest in digital widescreen technology with XpanD 3D.
Sit back, relax and enjoy the film in the comfort of luxury seating and surround sound.**

Where Do We Go Now? (2011) Running time: 100 mins (Cert 12A)

In a war-ravaged Middle Eastern village, Muslim and Christian women band together to prevent further sectarian violence in this comic fable. In a remote Middle Eastern village, Christians and Muslims have lived side by side all their lives, largely in harmony despite the odd outbursts of rage between the menfolk. Although the village is largely cut off from the outside world, with a broken bridge, landmines in the surrounding countryside and next to no television reception, news of escalating religious conflict does start to filter through, and tension begins to rise. As the men grow increasingly hot-headed, the women hatch inventive and elaborate plans to distract them and defuse the situation.

Sunday, 7th July 19:45

Shakespeare's Globe Theatre: Twelfth Night (2012) Running time: 176 mins

Filled with a cast of unforgettable characters, **Twelfth Night** is a moving comedy of loss and misplaced love and includes some of the most exquisite songs Shakespeare ever wrote. The all-male Original Practices production, exploring clothing, music, dance and settings possible in the Globe around 1601, stars award-winning Mark Rylance and Stephen Fry. **Twelfth Night's** sell-out performances led to a hit run in London's West End.

Monday, 1st July 19:45

Populaire (2012) Running time: 111 mins, Cert 12A

Spring, 1958. 21-year-old Rose Pamphyle (Deborah Francois) lives with her grouchy widower father who runs the village store. Engaged to the son of the local mechanic, she seems destined for the quiet, drudgery-filled life of a housewife. But that's not the life Rose longs for. When she travels to Lisieux in Normandy, where charismatic insurance agency boss Louis Echard (Romain Duris) is advertising for a secretary, the ensuing interview is a disaster. But Rose reveals a special gift - she can type at extraordinary speed. Unwittingly, the young woman awakens the dormant sports fan in Louis. If she wants the job she'll have to compete in a speed typing competition.

Friday, 28th June 19:45 Wednesday, 3rd July 20:45 Thursday, 4th July 14:00
Saturday, 6th July 19:45 Wednesday, 10th July 20:45

The Great Gatsby 2D (2013) Running time: 145 mins, Cert 12A

"The Great Gatsby" follows Fitzgerald-like, would-be writer Nick Carraway (Tobey Maguire) as he leaves the Midwest and comes to New York City in the spring of 1922, an era of loosening morals, glittering jazz and bootleg kings. Chasing his own American Dream, Nick lands next door to a mysterious, party-giving millionaire, Jay Gatsby (Leonardo DiCaprio), and across the bay from his cousin, Daisy (Carey Mulligan), and her philandering, blue-blooded husband, Tom Buchanan (Joel Edgerton). It is thus that Nick is drawn into the captivating world of the super-rich, their illusions, loves and deceptions.

Thursday, 27th June 14:00 19:45 Sunday, 30th June 19:45 Thursday, 4th July 19:45

Man of Steel 2D (2013) Running time: 143 mins, Cert 12A

During General Zod's (Michael Shannon) attempted coup on the dying world Krypton, chief scientist Jor-El (Russell Crowe) rockets his son Kal-El, the planet's first natural-born child for centuries, into space. Crashing on Earth, the child is raised by the loving Kents (Kevin Costner and Diane Lane) to keep his immense strength and super-sensory perception secret. But when the Kal-seeking Zod appears on Earth 33 years later, it is surely time for Kal / Clark (Henry Cavill) to reveal himself.

Friday, 12th July 19:45 Sunday, 14th July 14:00 Thursday, 18th July 14:00
Saturday, 20th July 19:45 Thursday, 25th July 19:45

Behind The Candelabra (2013) Running time: 118 mins, Cert 15

Before Elvis, before Elton John, Madonna and Lady Gaga, there was Liberace: virtuoso pianist, outrageous entertainer and flamboyant star of stage and television. A name synonymous with showmanship, extravagance and candelabras, he was a world-renowned performer with a flair that endeared him to his audiences and created a loyal fan base spanning his 40-year career.

Friday, 19th July 19:45 Sunday, 21st July 19:45 Wednesday, 24th July 20:45
Thursday, 25th July 14:00

Find us on Facebook - Electric Picture House

Follow us on Twitter - @WottonCinema

Information is correct at time of going to press.

Please call for the latest details.

Wotton Electric Picture House
18A Market Street, Wotton-Under-Edge, Glos,
GL12 7AE
01453 844601 - general enquiries (during opening hours)
01453 844401 - 24 hour recorded message

July Sudoku

Neil Fozard

For the uninitiated:-

to solve the puzzle, each row, column and 3x3 box must contain each of the numbers 1 to 9.

EASY !!

NOT SO EASY !!

			3				8	9
	9				5	1		2
				7	2			
2						6		5
		6			7			
	4	5		1				7
	7		1					4
3								
5	1		7		4	2		8

				2	4	3		
	5	2				4		
			5	3	8			9
	6	1	2					
							2	
	3	4	7					
			6	5	9			4
	8	6				9		
				8	2	1		

Answers to the June quizzes:-

'Easy'

1	7	2	4	3	8	5	6	9
3	9	4	6	1	5	2	7	8
8	6	5	2	9	7	3	1	4
2	5	6	8	4	1	9	3	7
4	3	9	7	2	6	1	8	5
7	1	8	9	5	3	6	4	2
5	4	1	3	8	9	7	2	6
9	2	7	1	6	4	8	5	3
6	8	3	5	7	2	4	9	1

'Not so Easy'

3	6	2	4	1	5	9	7	8
8	5	1	3	9	7	2	6	4
9	7	4	2	6	8	3	1	5
6	3	8	9	4	1	7	5	2
4	9	5	7	3	2	1	8	6
2	1	7	8	5	6	4	3	9
5	2	9	6	7	3	8	4	1
7	4	6	1	8	9	5	2	3
1	8	3	5	2	4	6	9	7

Baby Sitting & Pet Care

Fund raising for...  **World Challenge**

Going on holiday? Need a night out? Then, no need to worry..

I am responsible, reliable and have experience of looking after young children and caring for pets whilst you are away.

I am available at weekends and some weekdays.

Call Libby on 01454 238118

The Secret Studio

Beautiful creations made for you

From our Studio in Petty France we sell hand-painted furniture and home & garden accessories. Furniture commissions also taken.

Open Tuesdays & Thursdays 10am-4pm

www.thesecondstudio.co.uk

Ella M: 07976 952426 Jane: 07766 712066

Coombe Farm Logs

in 1m3 bags (dumpy bags)
Dry, seasoned hardwood logs

Free delivery
£50 per bag — 2 for £95

Call Tom Cole
Mobile: 07970911412
Home: 01454 238 896




EAST & SONS
Established over 100 years

PLUMBING AND HEATING ENGINEERS
CORGI REGISTERED GAS INSTALLERS
MEMBER FEDERATION OF SMALL BUSINESSES

'ASHDENE', HIGH STREET, HAWKESBURY UPTON
Tel/Fax: 01454 238353
Mobile: 07513 908985

Hawkesbury Contact List

Group	Contact	Phone	Website	Email
1st Hawkesbury Upton Guides	Louise Roberts Jane Bleaken	238628 232993		louise.roberts622@btinternet.com
After School Club	Louisa Tooker or Kim Anderson	238629 or 07527224741		hawkesburyasc@hotmail.co.uk
Badminton Club	Roy Townsend	238397		roy.townsend3@btinternet.com
Bethesda Chapel	Mervyn Coates	01453 843771		
Brownies	Liz Howard	238417		lizhowardconsult@aol.com
Chipping Sodbury Police Station	Non-emergency: PC Mike Hart: PCSO Rich Gay: PCSO Sian Rolling :	101 07919628618 0750006433 07825388927	www.avonandsomerset police.co.uk	michael.hart@avonandsomerset police.co.uk
County Councillor	Sue Hope	238673		sue.hope@southglos.gov.uk
Cricket Club	Martin Gardener	238526	www.hawkesburycricket club.co.uk	martin.gardener@cemex.com
District Councillor	Sue Hope	238673		sue.hope@southglos.gov.uk
Evergreens	Mandy Clarke	01454 261436		
Friends of St Mary's	Pauline Setterfield	238307		pleensetterfield@hotmail.com
Gardening Club	Terry Truebody	238364	www.hawkesbury- gardening-club.org.uk	terry_truebody@bigfoot.com
Hall Booking Secretary/ Village Calendar Booking Secretary	Lorraine Rutter	07972 508621 01454 299761	www.village-hall.org www.hawkesburyupton. com	bookings@village-hall.org calendar@hawkesburyupton.com
Hawkesbury Horticultural Show	Keith Player (Chairman) Vicky Rispin (Secretary)	238463 or 0796 331 8585 232910	www.hawkesburyshow. org	keithjosieplayer@hotmail.co.uk vicky@the-hollies.co.uk
Hawkesbury Primary School	Louise Lewis (Head)	238629	www.hawkesburyschool. ik.org	hawkesburyuptonprimary. school@southglos.gov.uk
Hawkesbury PTA	Becki Spokes	238841 07503 097554	http://www.hawkesbury primarieschoolpta.com	debbiehawkesbury@googlegmail.com
Hawkesbury Stallions Football Club	Simon Warren	01454 238070 07800844935	www.hawkesburystallions. co.uk	simonwarren@talktalk.net
Hawkesbury Upton Recycling Group	Neil Bennett	07914 908211		peterandpatsherry@tiscali.co.uk
Hawkesbury Volunteer Transport	Trip Coordinators: <i>(to arrange transport to medical appts.)</i> General Enquiries:	0797 206 5665 0797 206 5496		alan_shewry@msn.com
HU5K	Debbie Young	01454 238401, 07594 717891	www.hu5k.org	debbiehawkesbury@googlegmail.com
Local History Society	Barrie Hope	238673		hope.poolfarm@btinternet.com
Methodist Church Schoolroom:	Mrs Moira Coates	238479		
Methodist Church:	Rev Debra Chidakwa	01454 853965		
Neighbourhood Watch	Chris Rispin	232910		chris@the-hollies.co.uk
Parish Council	Hazel Bleaken	299227		hazel.bleaken@gmail.com
Parish News	Vicky Rispin (copy/subs) Fiona Rowe (copy) Jill Bendeaux (ads)	232910	www.hawkesburyupton. com/parish_news.html	parishnewssubs@hawkesburyupton.com parishnews@hawkesburyupton.com parishnewsads@hawkesburyupton.com
Pre-School and Toddlers	Sarah Green	07989 484 774	www.hawkesbury preschool.org.uk	enquiries@hawkesburypreschool. org.uk
Rainbows	Louise Roberts	238628		louise.roberts622@btinternet.com
RAOB (Buffs)	Iain Rae (Treasurer) Peter Webb (Secretary)	238702 294916		iainrae@uwclub.net susan.peter@uwclub.net
Royal British Legion	Sam Allen	238417		howrdallen@aol.com
Senior Citizen's Fund	Sam Allen	238417		howrdallen@aol.com
St Mary's Church	Linda Fairney	01454 238 553		william@fairney.wanadoo.co.uk
Tennis Club	Howard Bradley Tricia Perris	238761 294768	www.hawkesburytennis. org.uk	howardb@dexam.co.uk
Theatre Group	Jenny Harris	238411		harris@backst.freeseerve.co.uk
WI	Gill Truebody	238364	www.hawkesburyand hortonwi.org.uk	terry_truebody@bigfoot.com
Youth Group	Mark Frankcom	238720		markfrankcom@gmail.com

We do our best to keep the contact list up-to-date. Any changes should be sent to parishnews@hawkesburyupton.com.