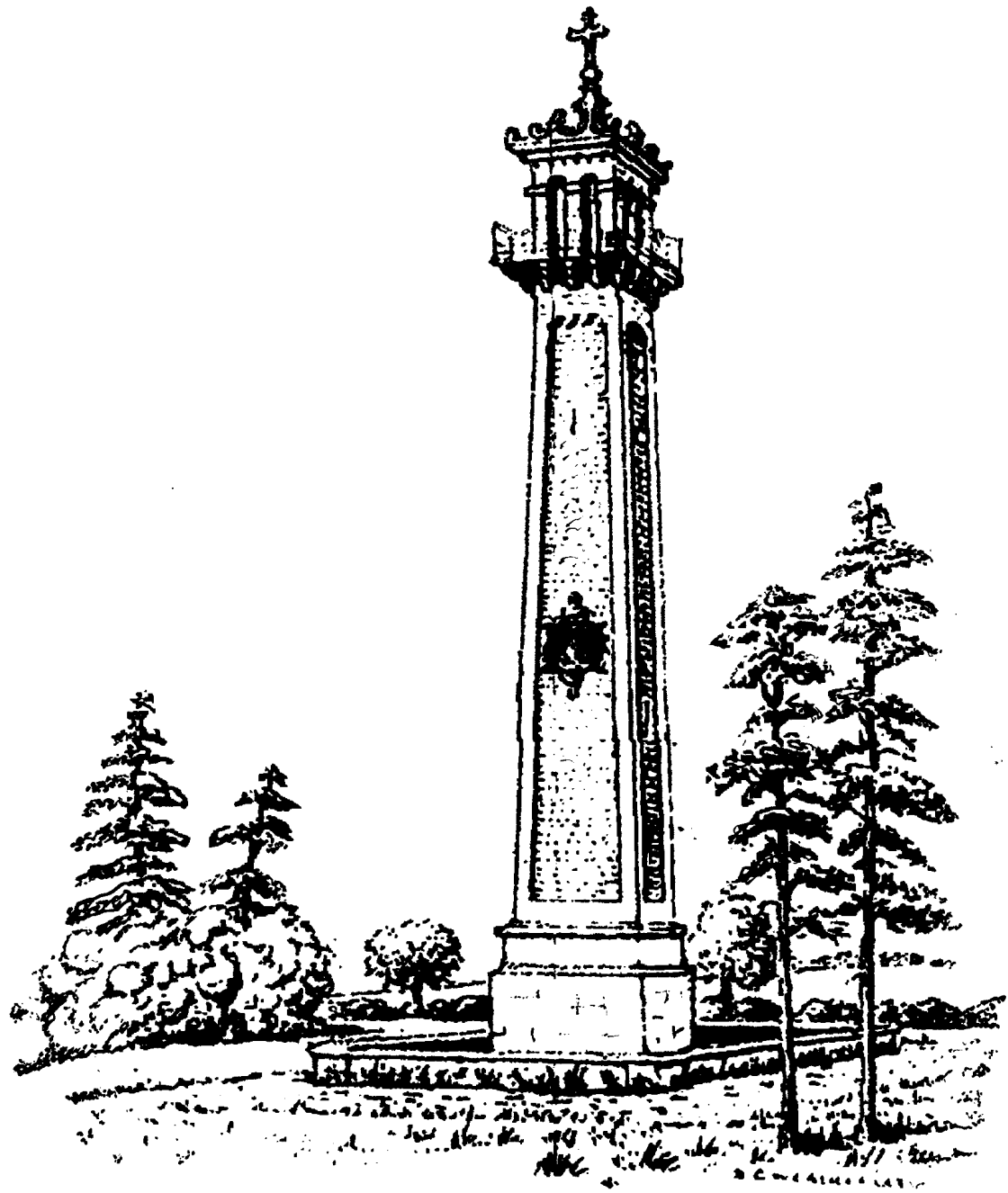


January 2012

Hawkesbury



Parish News

40p



EDITORIAL

Fiona writes:

Welcome to the January 2012 issue of Hawkesbury Parish News. The mad rush to get everything done in time for Christmas is finally



over, the dog has enjoyed the annual gleeful dive into the pile of discarded wrapping paper and the belt has been released another notch for the umpteenth time this festive season. The Christmas meats and treats have been enjoyed and the freezer is up to capacity once more with fantastic meals made from the leftover turkey, ham, cheeses, etc. Part of the tradition in our house is to have a cooking fest after Christmas, creating soups, pies and various dishes from the fantastic leftovers. They are great to dig out of the freezer to enjoy on a cold January night, after battling home from work through the weather.

2012 may well be a tough and uncertain year for many, but it is important to remember the great community in which we live and the tremendous spirit with which the village comes together for family events, fundraisers and social gatherings.

Whatever January brings us, there is a chance to work off the Christmas excesses at the **Barn Dance** in aid of Hawkesbury Youth Group on **January 14th** and the chance to enjoy a few more at the **Burns Night Celebration** on **January 28th!**

Wishing you a very Happy New Year from all of us at the Hawkesbury Parish News.

**Deadline for copy for the February edition is
15th January 2012.**

Please send it in as early as you can!

In Brief

Hawkesbury Village Shop

Opening Times

Monday - Saturday - 8am-6pm
Sunday - 8am-12:30pm

High St, Hawkesbury Upton. Tel: 238639



Hawkesbury Post Office

Opening Times

Monday-Friday - 9am-2pm
Saturday - 9am-12pm

Back Street, Hawkesbury Upton, GL9 1BB
Tel: 01454 238341



Did you know that we have Websites for the Village and also for the Village Hall?

**www.hawkesburyupton.com and
www.village-hall.org**

You can use these websites to:

- Check the Hall & Village calendars
- Book the Hall online
- View the Hall & Parish Council minutes
- View past editions of this magazine
- Link to many other village organisations
- and much more.



Compost	£1.50 per bag
Logs	£2.50 per bag
Firewood	£1.50 per bag
Woodchip	£1.00 per bag

All available from the composting site behind the village hall

For more information on prices and delivery of larger amounts, contact:

Steve Dagger on 07903 037297

Hawkesbury Parish News

Hawkesbury Parish News is edited, produced and distributed entirely by volunteers. Advertising and subscription revenue covers the cost of production only.

Typesetting, Fiona Rowe

Layout, Editorial: parishnews@hawkesburyupton.com

Treasurer & Vicky Rispin

Subscriptions: parishnewssubs@hawkesburyupton.com

Editorial Team: Fiona Rowe
Vicky Rispin

Copy to: Fiona Rowe, 24 Sandpits Lane

Vicky Rispin, Coombe View,
High Street (next to the Village Hall)

parishnews@hawkesburyupton.com

Advertising: Sarah-Jayne Ainsworth
parishnewsads@hawkesburyupton.com

Distribution: Pauline Dixon 01454 299236
pcdixon@waitrose.com

Suzanne Flye

Printed by: Sprint Print,
22 Station Road, Yate. 01454 852255

Electronic copy always gratefully received — please save files in Microsoft Word or Rich Text Format (rtf).

Only digital photos sent by email can be accepted.

Disclaimer

Any opinions expressed or implied within this publication are not necessarily those of the Editors. The Editors reserve the right to exclude any item whose authorship is not disclosed. No responsibility can or will be accepted for any opinion, comment or error of fact printed in this magazine. All advertising is included in good faith; its inclusion does not necessarily endorse the product or service.

**Latest date for all items for the
February magazine is 15th January.**

DATES FOR YOUR DIARY



Next Parish Council Meeting

The next Parish Council meeting will be on **Mon 9th January 2011**, 7.30pm in the Village Hall.

Coffee Mornings

Coffee Mornings take place on Mondays from 10am - 11.30am.

At Peggy Woffenden's house

Tea, Coffee and a biscuit or two for 50p. All welcome.



Yoga classes

with Joan Boulton every Thursday morning at the Methodist School Room 10-11.30am. £6 a session.

All ages and abilities welcome. For more details call 01454 238411



Village Hall AGM

in the Hall on **Monday 13th February 2010** at **7:30pm**

and is open to anyone who wishes to attend.

♠ ♥ BRIDGE ♦ ♣

- Do you want to learn how to play this most stimulating and social of card games? Or do you already know the basics, but want to improve?
- I will be giving lessons this autumn, at both levels. My courses are designed for anybody who wants to have fun, learn an enjoyable hobby and make new friends.
- Come on your own or with a friend, you'll be assured of a warm welcome.
- For details: contact Ian Cooke
- 01666 890261
- ianjcooke@hotmail.com

Evergreens

10th January 2012—New Year's Party and entertainment 2pm start

If you would like to come along and need a lift please give me a ring.

Mandy 01454 261436



Mobile Library

Times & Dates

9th & 23rd January 2012

Hawkesbury Village Hall	2.35 - 3.00
Hawkesbury War memorial	3.05 - 3.20
Hawkesbury Highfields	3.25 - 3.40



SATURDAY 14 JANUARY 2012

BARN DANCE

HAWKESBURY VILLAGE HALL
7.30 – 11.00PM

PROCEEDS IN AID OF
HAWKESBURY YOUTH CLUB

Recycle your Christmas Trees

We will be shredding used (real) Christmas trees in the Parish Hall car park on **Saturday 8th January**.

Bring along your tree (minus any decorations and tinsel) and join us for coffee and a final mince pie.

Hawkesbury Upton Recycling Group

Enquiries – 238791

SELF-CATERING COTTAGES ON INGLESTONE COMMON

Having a family do or some building work?

There are a number of self-catering cottages available, accommodating from 1 – 14 people.

Ring Hazel on 01454 299227 for details or view on www.cotswoldedgecottages.com

KLEEN & GREEN

Professional
cleaners
who care

- ◆ Domestic and Commercial cleaning—daily/weekly/one off
- ◆ All staff police checked, fully trained, fully insured
- ◆ Local, reliable, friendly
- ◆ Ironing service
- ◆ Competitive rates

Tel: Sarah 01454 851487
Christine 07900 831967

Hawkesbury C.E VC Primary School January Newsletter 2012

Happy New Year from all the children and staff at Hawkesbury Primary school. It was lovely to see so many villagers during the run up to Christmas at the Shopping Evening and the Christmas Fair, thank you for supporting the school.

Christmas events

The infants did a wonderful job of performing 'The Whoops-a-Daisy Angel'. All the children told the story together and there were lots of songs and dancing. It was great to see the residents from Beaufort House and the pre-school children enjoying the shows as well as parents, carers and other relatives. Well done to Mrs Hornig, Mrs Wilson and Miss Moseley for all their hard work with the children.

Swallow and Hawk class entertained us with 'The Hosanna Rock' which they performed at St Mary's church. It was wonderful to hear the children performing some beautiful songs to tell the traditional story of Christmas – it is such a pleasure to hear the children filling the church with song. Thank you to St Mary's who let us use the church, providing refreshments and for funding the coaches to transport people to and fro.

Christmas Fair

Our brilliant PTA once again did a marvellous job of organising the Christmas Fair, with some excellent freshly home cooked soup on offer. It was well attended with a variety of fun things for the children to do, decorating boxes, badge making, decorating cakes like Rudolph to name but a few.

Netball tournament

Well done to our netball team who entered a tournament at KLB school, competing against 6 other schools. They did brilliantly and came 2nd—they were very pleased with themselves and rightly so. They would not have done so well without the dedication and skilled coaching of Ish Hughes and Fiona Webb – thank you.

Cross country

Our cross country team have been competing in yet another race one very cold and icy Saturday morning. They showed tremendous resilience and improved on their places from last time. Congratulations go to Sean White who came first in his race and Abi Robson who came second. They have one more race in January – good luck.

Charlie Carnegie

Many of you may be aware of the very generous and kind hearted actions Charlie Carnegie during the summer who raised £200 for the school by completing the fun run. We have now decided to spend the money on some soft seating for a new parents and small group 'chill out' room. We discussed this when Charlie donated the money and he said he would have loved to have used a room like that when he was at Hawkesbury. A huge thank you goes to Charlie – we will think of him every time we use the room.

Old Vic Nativity Play

The children were treated to a wonderful retelling of the Nativity performed by The Old Vic on Friday 2nd December. It was a full performance with songs and professional actors. Horton school joined us for the performance. A huge thank you goes to St Mary's trust who funded the visit

Louise Lewis — Headteacher

Enjoy, achieve, believe.

SEVERN VIEW FARM
— Sold on Taste —



Boarding Cattery
01454 299471

Warm, comfortable, secure holiday accommodation for cats.

Special diets and medicines catered for

SEVERN VIEW FARM
— Sold on Taste —

Organic Farm Shop
01454 299236

Good, tasty organic food from our farm on Inglestone Common.

Open Saturdays and Sundays
- 10am to 4pm.



PEGASUS HEATING AND PLUMBING

OFTEC Registered C8787
GAS SAFE GAS INSTALLER No 68606

- ♦ Oil, Gas and Solid Fuel
- ♦ Installations and Repairs
- ♦ Bathrooms and Kitchens
- ♦ Domestic and Commercial
- ♦ Lead work specialist

ALL WORK GUARANTEED

Tel 01454 327708 Mobile 07860 471232



It's a new year and the children are looking forward to starting back at Hawkesbury Preschool. Our theme for this term is dark and light, which will include understanding how we make shadows and learning about nocturnal animals.

Before the Christmas break, we had a very successful parents' morning, giving mums and dads the opportunity to have a one-to-one with our play-leaders, learn more about their child's individual progress and go through their learning diaries. The parents who came along found it both informative and enjoyable and the play-leaders have decided to make this a regular event in pre-school's calendar.

We were also extremely pleased with the attendance at our recent open morning. It was a fun-filled session, a great introduction to our thriving preschool and we were delighted to welcome several new starters.

On the fundraising front, the Christmas Family Disco was a brilliant night and very much enjoyed by all. We would like to say a huge thank you to everyone that organised and supported this event.

The Christmas Raffle was our best ever, and congratulations to all our lucky winners. Many thanks once again to our sponsors this year - Milburys Estate Agents.

Finally if you are interested in enrolling your child at Hawkesbury Preschool please contact one of our play leaders on 07989 484774, or email us at: enquiries@hawkesburypreschool.org.uk

For more information on our preschool please take a look at our website:

www.hawkesburypreschool.org.uk

Hawkesbury After School Club



**Monday to Thursday
2.30 to 6pm**

All children from Hawkesbury and neighbouring schools are welcome to come along and enjoy our activities. We aim to provide quality childcare at an affordable price and to offer a place where children can play freely and interact socially in the care of trained playwork staff.

If you book regular sessions in advance the price is £8 for your first child and £5 for each sibling. If you would like to book your child in for a one off session, the cost is £9 per session for the first child with siblings costing £6. These sessions are subject to availability.

All sessions can be booked by either dropping in to a session and having a chat with Louisa, our senior playworker, calling the ASC mobile on 07527 224741 during club hours, or call the school office during school hours.

If you would like to know more about After School Club call me, Kim Anderson on 01454 238799 and I will be happy to help.

Would you like cash for something round the home that you no longer want/need/like?

Well, why not try eBay?

No eBay account? That's no problem.

I have been active on eBay since 2001 and have a 100% positive feedback from over 600 deals. For a percentage I will deal with everything including taking photos of the item, setting up the auction on the eBay website, dealing with any queries from buyers, receiving the sale proceeds and posting off the item for you.

Some items might attract a better price at a local auction house, and dealing with this is another service I can offer

You can set the starting price and if required, set a reserve price.

Any questions, call me on 238778, email me at mickbendeaux@hotmail.com or come and see me at 20 Birgagge Road



INSIDE OUT



THE COMPLETE DECORATING SERVICE
Efficient, reliable all female team

A comprehensive interior painting and decorating service, specialising in colour co-ordination, carpets, curtains and accessories.
From individual rooms to complete houses, concept to completion.

01453 835497
07766 712066



01249 783636
07909 542990

NEWS FROM HAWKESBURY PRIMARY SCHOOL PTA

Happy New Year from the PTA! And a huge thank you to everyone who supported our Christmas Fair last month. At the time of writing, we hadn't finished working out the exact profits, but it's somewhere between £600 and £900 - pretty good for an event that we hold largely for fun!

We were a bit worried about having to move the date from our traditional Saturday afternoon to a Sunday morning, due to the many other events for our children that were happening that weekend (what a good problem to have!) But in the end we had a great turnout, with many people staying for the whole three hours. Thanks to everyone who helped make it such a success - the committee, school staff (it's definitely beyond the call of duty to attend a school event on a Sunday morning, but many did!), the governors for their generous donation of raffle prizes, the dads who made the fabulous soup lunches and all the people who attended. Plus a huge thank you to Father Christmas for taking time out of his busy December schedule to visit us!

We don't have any events in January, but we're already forging ahead with plans for our next big event: the Pledge Auction on the first Friday in March. This is traditionally our biggest fundraiser of the year, offering everyone the chance to buy fantastic pledges - many of them things that money can't buy - at affordable prices. If you or someone you know could offer us a pledge to auction, we'd be very grateful. It can be anything from material goods (unwanted Christmas presents, anyone?!) to an experience such as an interesting factory tour or restaurant meal. Just get in touch if there's something you'd like to offer - we'll be very pleased to hear from you. More details in the next issue.

2012 CALENDARS & TEA TOWELS STILL AVAILABLE

In the meantime, we still have a few copies left of our fabulous fundraising calendar, launched at the Christmas Fair. It features a delightful self-portrait in full colour by every child in the school, as well as a handy reminder for each one's birthday. The calendars cost just £5 and are now available from the school office.

New this year was the school tea towel, featuring a different picture of every child, printed in the school colour. These are now on sale in the school office for £5.

BOOK STALLS

Need a good book to while away these long, dark January nights? Just pop into The Fox or Head Start Studio to check out our secondhand bookstalls, kindly hosted in both these places. All adults books are just £1, including many nearly-new hardbacks and recently published paperbacks. And if you've got any unwanted books post-Christmas, please send them our way!

More news and information about the PTA can be found at our website:

www.hawkesburyprimaryschoolpta.com

Debbie Young, PTA Secretary - tel 238401 / email

debbiehawkesbury@googlemail.com*



Childrens Society

I will be collecting the Childrens Society boxes during the first week in January (hopefully). If it is easier for you to deliver it to me, please drop it round to 9 Birgage Road.

Thank you all for your continued support.

Gill Morgan

B.H. COLE & SON LIMITED

Tel: 01454 238896 or mobile: 07970 911412

- ◆ NHBC Registered Housebuilders
- ◆ New Housebuilding
- ◆ Extensions & Conservatories
- ◆ Renovation & Refurbishment
- ◆ Patios, Paths, Walls & Landscaping
- ◆ Natural Cotswold Stone Walling a speciality

BUILDER'S RUBBLE, DEBRIS, GARDEN WASTE...

Any old junk cleared and hauled away
I can do the job at less than it would cost to hire a skip...
AND you don't have to load it!

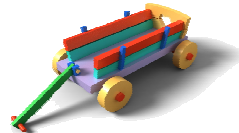
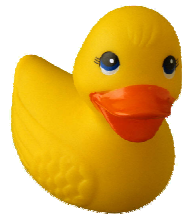
Call **TOM COLE** on 01454 238896
MOBILE: 07970 911412

Hawkesbury Preschool & Toddlers

**FREE entry for buyers
come along and find a bargain!**

Saturday
25th
February

Table Top Sale



Refreshments

Homemade
Cakes

Tombola

Hawkesbury Village Hall

10–12 noon



for more info or to book a table

Celia Rowlands 01454 232920,

Claire Mullens 01454 238306 or Helen Keogh 01454 238895

A.J. MORGAN FARM PRODUCE
France Lane Farm Tel: 01454 238215

Traditionally reared pork & lamb, Free Range Eggs
Home produced dry cured bacon, ham, gammon, Salami, Chorizo,
Hawkesbury Faggots, Black Pudding, 1/4lb beefburgers,
Various flavour sausages, including NEW Spicy Chilli
All home made in our five star premises.

Only cooking for one? Did you know - you can buy just one sausage, one faggot, one slice of ham, one rasher of bacon & even one egg if you want to!

Last minute BBQ? Unexpected guests to feed?
Shop Officially Closed? Don't worry just call in, or ring us!

Karen 07929 947149 or Andrew 07973 137799.

**M
G** *Countryside Development*

**Fencing, Gateways, Landscape Gardening,
Hedge-laying, Timber Structure and Fire Wood**

Miles Batten
Giles Bleaken

07866486808
07976562323

Based at Upper Chalkley Farm
Horton

Other jobs available upon request

Village Hall AGM

This will be held in the Hall on
Monday 13th February 2010 at 7:30pm
and is open to anyone who wishes to attend.

Looking at the original Constitution from 1951 the Committee comprised of representatives from the following Groups:-

Parish Council, WI, Mother's Union, School, Girl Guides & Youth Club, PCC, Congregational Chapel, Cricket Club, BUFFS, British Legion, Football Club, Show Committee and the Cycle Speedway Club.

It would be nice to have representatives from all the Village Groups once more. As you can appreciate the Hall is a very important part of Village life, and the more help we can obtain to keep it running, the better.

The committee meets on the 2nd Monday each month at 7:45pm
in the upstairs meeting room.

Magazine annual subscriptions for 2012 are now due

If you receive this magazine through your door, you will be keen to pay your next year's subs as soon as possible to reserve your copy for the next 12 months. It helps our great band of distributors no end if all money is paid by the end of January.

Subs are retained at £4.50 for the whole year.

Please pay your distributor, or take cash or a cheque, payable to "Hawkesbury Parish News" to-

Vicky at "Coombe View", High Street, (next to the village hall car park)

Happy reading in 2012!

P.S. If you usually buy your Parish News from the Village Shop or from the Post Office, but would like to have it delivered to your house every month, please drop in your subs payment, with your name and address, to the address above, (before 15th January) and it will be arranged.

Carol B's Homemade Treats

Treat yourself, your family or your visitors to a homemade tart or pudding, made with locally sourced ingredients, without the hassle of making it yourself

Whatever your favourite I'll bake it and
you can even take the credit!

Call me now on **01454 238 303** to find out more



Hawkesbury Village Hall
Mon, Wed, Thurs & Fri 8.45 - 11.45am

All children are welcome

from two years old

Please contact us on

07989 484 774

Charity number 1013170 Ofsted Registered 136003



Hawkesbury & Horton W I

The Christmas meeting had a very festive air with the Village Hall beautifully decorated by President Barbara Harvey, committee and helpers, and during the evening we were well entertained by the Avon Harmony Barbershop Chorus.

In December members also enjoyed an excellent meal at the Beaufort Arms.

Competitions:

An Alternative Christmas Decoration Competition was won by Chris Taylor

Competition winner of the year was Jenny Harris.

Betty Salthouse won the Flower of the Month Competition and also the Annual Flower of the Month Competition.

In 2011 the Contemporary Women's Writers Association ran a course on memoir writing in conjunction with the WI. Five members from Hawkesbury & Horton WI joined the course and produced a little book of their own very personal memoirs which date from the 1930's to the present day, and this has been made available to our WI members.

Three WI members: Jenny Harris, Sam Allen and Liz Howard are now having their memoirs published in a national book along with many others from all over the country. This couldn't happen at a more appropriate time as a new year is a time to look forward but also look back.

Reminder: WI subscription is due in January.

Diary Dates

3rd January - In House Games

7th February - Nia Dancing with Christine Davis

Visitors are always welcome at our meetings on the first Tuesday of the month, 7.30pm at the Village Hall.

Betty Salthouse 01454 238410

Doreen Baker 1932 - 2011

Doll passed away on 14th October at Frenchay Hospital.

The family would like to sincerely thank everyone who sent cards and kind messages, and for joining them at the Bethesda Chapel to say farewell. It was very comforting to see so many family and friends.

A very generous £370 was raised in donations to be divided between Bethesda and Methodist chapels.

Once again, many thanks.

EEZEEFLOW DRAIN CLEARANCE

Drainage problems – private and domestic

NO JOB TOO SMALL
Regional Coverage

CENTRAL OFFICE
PHONE: 01454 238200
FREEPHONE: 0800 3893037
FAX: 01454 238713

Villa for sale in Akbuk, Turkey

situated on wooded
mountainside overlooking bay
40 minutes north of
Bodrum Airport

For further details e-mail
m-munro@hotmail.co.uk
or call 01454 238 174

Pest Problems

**If wasps are a nuisance and
bugs are bugging you -**

Ring Hazel on
01454 299227

To solve your
pest problems





TROWEL & ERROR

HAWKESBURY GARDENING CLUB

www.hawkesbury-gardening-club.org.uk

Meetings are held at 8pm on the 4th Monday of the month in the Methodist Hall in Back Street.

Our speaker for November was **Sally Taylor** who demonstrated how to make **Seasonal Arrangements**.

Sally lives in Ya-Té where, she said, weeds don't grow and neither does anything else. Her demonstration was a bit like the Generation Game. She stripped bits off of plant cuttings then, in what seemed to be a random fashion, shoved even tinier bits of them into an Oasis block and all the while she talked twenty to the dozen. Needless to say, she ended up with a work of art. Eh voila! Follow that!

Now and then during her chatter came an aside about her personal circumstances that had us all laughing but often quietly contained a nugget of really useful information that entered our heads without us being consciously aware of it. One such snippet of advice was to be patient when loading an Oasis block with water. Don't try to force water into it by shoving it below the surface but let it float, Jesus like, on the top and it will gradually sink as it absorbs water naturally. Also make sure to push cuttings deep into the block so that they are actually in contact with water. Another good, fun, evening. Come again Sally Taylor.

With more people buying wood burning stoves there seems, for some people, to be a growing problem of what to do with the ash. A gardening magazine recommends that you spread it on your garden. Why didn't my granddad think of that?

Our next meeting is on Monday 23rd January 2012 when **Brian Noble** will talk about **Raised Bed & Container Gardening - Gardening in a Restricted Space**. Don't miss it!

If you are not a member but would like to hear a speaker that takes your fancy then come along as a guest – fee £2.50. For further information contact Terry Truebody on 01454 238364.

THE LAST MINCE PIE

By Alan C. Porter

Here I sit feeling a trifle dejected wondering what happened to Christmas and the new Year. They came and went in a euphoric wave of joy and merriment.

One minute I was opening gaily wrapped presents seeking the utopian gift that has eluded me all these years. Next I was giving vocal wellie to "auld lang syne" helped by a liberal tot or two of Scotland's finest. Now with the baubles no longer dangling, the Christmas tree stripped of its lights and the decorations overflowing from boxes littering the carpet, I am left with the eternal, sobering question as I venture forth into the uncertainty of the new year. . . what am I going to do on Saturday nights now that "Strictly" and "Merlin" have finished and "Casualty" has been blown up?

I am faced with a entertainment black hole, and to top it all I have just finished off the last of the mince pies. But all is not lost, I found two forgotten chocolate decorations on the tree.

HAPPY NEW YEAR TO YOU ALL.

Mumbleys Farmhouse

"Complete Beginners"

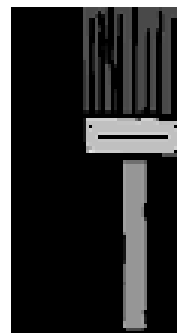
Ever Dreamt of Escaping the Rat Race
and Running your own Smallholding?

We provide a range of one-day courses on smallholding or
livestock topics. We start from the basics—no knowledge
needed; all questions welcomed!

Courses: Bees for Beginners; Sheep for Beginners;
Smallholder Taster Days; Starting with Hens & Ducks

Contact: Jules Moore on 01454 415296

www.mumbleysfarmhouse.co.uk



BRILLIANT WHITE DECORATING

Professionals too expensive!!!

THINK AGAIN!

**I am experienced, fully insured
and offer great value in decorating.**

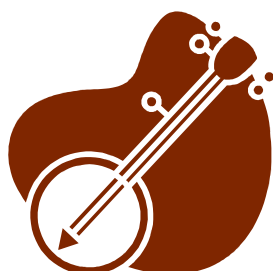
For Free Advice & Estimate

Contact Jackie White-

01454 238555 [mob: 07805 266520]

SATURDAY 14 JANUARY 2012

BARN DANCE



HAWKESBURY VILLAGE HALL
7.30 – 11.00PM

TICKETS AVAILABLE FROM
SARA WHITE 238 554
MICHELINE MUNRO 238 174

ADULTS £7.50
CHILDREN UNDER 14 £4.00
FAMILY TICKET £20.00

TICKET PRICE INCLUDES A COWBOY SUPPER

PROCEEDS IN AID OF
HAWKESBURY YOUTH CLUB



More from Practical Gardening of 1938

Dates for doing things

January	1st.	Dispatch Seed orders	July	25th.	Layer border carnations
February	2nd.	Cut back new raspberries	August	10th.	Plant strawberries
	15th.	Prune Clematis Jackmanii		25th.	Plant madonna lilies
March	18th.	Plant border carnations	September	1st.	Sow new lawns
	25th.	Prune bush roses		30th.	Start planting evergreens
	31st.	Plant out sweet peas	October	12th.	Sow sweet peas in pots (under cover)
April	1st	Clip ivy on walls		19th.	Take cuttings of roses
	7th.	Plant maincrop potatoes	November	1st.	Plant hyacinths
May	1st.	Plant snapdragons		7th.	Plant tulips
	7th.	Plant hardy biennials		10th.	Plant hardy biennials
	31st.	Plant out dahlias	December	21st.	Plant shallots
June	5th.	Plant summer bedding			
	20th.	Cease cutting asparagus			
	30th.	Start budding roses			

Practical Gardening APRIL 1938

Brian Noble

THE HAWKESBURY SHOP

HIGH STREET, HAWKESBURY UPTON, TEL. 01454 238639



HAPPY NEW YEAR TO EVERYONE

Hope you all had a lovely Christmas!

All of the staff at the village shop would like to say a big thank you for all the Christmas orders we received. Also for the continued support we receive from our regular customers, we couldn't run it without you!!

THANK YOU STAFF AT THE HAWKESBURY SHOP

IF YOU DON'T FREQUENT THE SHOP, PLEASE COME IN AND TAKE A LOOK, WE SELL AS MUCH LOCAL PRODUCE AS WE CAN. FRESH CHICKENS, HAM – COME IN AND ORDER WHICHEVER JOINT OF MEAT YOU WOULD LIKE, LOCAL EGGS, JAMS, CHUTNEYS, MERINGUES, CAKES, BREAD, MILK – COME AND SEE!



HAWKESBURY UPTON RECYCLING GROUP

It has come to our notice that some of the youngsters in the village are climbing on the shed roof at the compost site. Apart from the damage that they are causing to our property, they are at risk of causing themselves severe injury if they slip and fall.

We have, therefore, painted the roof with anti-climb paint, which does not dry and will, we hope, stop the youngsters from taking any more risks. While we are sorry to have to do this, we hope it will prevent a serious accident in the future. There will be a warning sign in place.

Any enquiries.....238791

FOUND:

A PLASTIC BAG WITH STAMPS AND TWO CARDS, FOUND NEAR SANDPITS LANE HAS BEEN HANDED INTO THE POST OFFICE. IF YOU HAVE LOST A BAG WITH SOME STAMPS AND TWO CARDS (ONE HAS ALREADY BEEN SENT TO AN ADDRESS IN TEWKESBURY) PLEASE COME INTO THE POST OFFICE WHERE WE ARE HOLDING IT FOR YOU.
THANKYOU.

DEB'S CELEBRATION CAKES

**Individually designed cakes
for special occasions**

Novelty cakes are my speciality but I also do wedding and other formal cakes

Don't hesitate to phone and discuss ideas or see my work

**DEB PIDSLEY 01453 834394
07890292125**

www.debscelebrationcakes.com

FIREWOOD

Dry seasoned hardwood logs, delivered cut and split to your requirements.

We also sell kindling and coal.

Lower Kilcott Farm

Call Steve Thompson
Home: 01454 232941
Farm: 01454 238276

NE odd jobs

**A fully insured, professional
and reliable service**

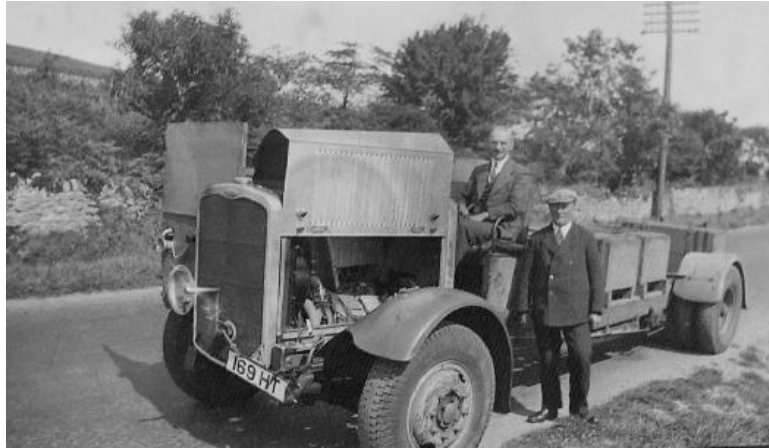
- Garden maintenance
- Weeding, grass cutting
- Cleaning
- Painting

**... as well as all those other little jobs
you just never seem to get around to.**

Call: Nicola Evered

07947 072780 or 01453 844124

Charles Redrup's Bristol Bus Engine and Other Oddities



Charles Benjamin Redrup – engineering genius and inventor extraordinaire, born in South Wales in 1878, was one of those versatile persons who could turn their hands to anything-anything to do with engines that is. If it moved, Redrup invented an engine for it: motorcycle, aircraft, boat or bus, all came within his portfolio. Amongst other things he set up the Barry Motor Company, worked for both Vickers and Avro aircraft companies and developed engines which were used in Bristol buses in the late 1930s. His innovations also helped in the successful development of the famous ‘Dam Busters’ bouncing bomb. Local writer **Bill Fairney**, Redrup’s biographer, will tell us more about the ‘7 litre, 9 cylinder, wobble plate’ bus engine and the stories behind the title given to this unassuming and unsung hero of the engineering world of ‘The Knife and Fork Man’.

Friday 20th January 2012 at 8.0pm Hawkesbury Upton Village Hall

NO INCREASE IN PRICES Members still £1 and Visitors £2!

Cotswold Edge Sustainability Network announces our first event for 2012!

The evening will feature Edward Lippiatt sharing his experience of installation of renewable energy at his farm - including the difficulties in getting planning permission for a wind turbine.

Please join us on Wednesday, 25th January at 7.30-8:30pm at The Catherine Wheel, High Street, Marshfield. We'll be in the upstairs room. All are welcome, and the event is free, as always!



LYNN'S DRIVING SCHOOL

GRADE 5 female driving instructor.

Weekly lessons or intensive courses.

I have a Nissan Micra which is easy to drive.

Pass plus registered.

Excellent 1st time pass rate.

For further details please contact...

01454 219101 or 07919410064
or lynnie1000@hotmail.com



Steve Green Photography

Family portraits in your own home
1 hour sitting inc. FREE print - £30



t. 07580 130763 or 01454 238022
e. steve@steve-green-photography.co.uk
w. www.steve-green-photography.co.uk

Walking in Hawkesbury



Every one of us living in and around Hawkesbury will at some point or other, stand back and think to ourselves – what a wonderful part of the world we live in. This beautiful corner of the Cotswolds has masses to offer, not least of which is the fantastic scenery and healthy walks that are here, right on our door step.

Back in 2008, the **Rights of Way Group** started as a result of an initiative from the **Hawkesbury Parish Plan**. Since that time a dedicated band of enthusiasts has been organising Village Walks and producing walk leaflets which are available, free of charge, from local village outlets and the internet.

The **Village Walks** have been well attended and are a great way of meeting new people. It's amazing how quickly you can become friends with fellow walkers, find out more about each other, what you have in common and before long, new friendships are born. All this while you find out more about the wonderful location we all live in.

At the end of October we held our Autumn Walk which was a particularly good one for all the family, indeed our youngest walker was 7 and the oldest was 82! Over the years we've walked around Hawkesbury, down in Lower Woods and across into the Badminton Estate (by kind permission of the Duke). At the end of our walks we usually try to have lunch together and if possible have either home-made soup or a barbecue. The very modest price charged for the lunch allows the group to raise funds to continue to produce the leaflets so that everyone can enjoy the lovely area we live in.

We arrange walks 4 times a year and **our next** walk will take place on **SATURDAY 28th January 2012**. This short circular walk of about 3 miles will take us about 1.5 hours and we will visit Hawkesbury Church via "the Sands" and back up to the village where we would be delighted to welcome you to join us for home-made soup and a roll in the Beaufort Inn (by kind permission of Mark Steeds).

Please meet in the Village Hall Car Park at 10.15 am for a 10.30 am start.

For more information please contact Liz Howard (238417) or Jane Jones (238633)
If you would like to receive email notification of future walks, please contact Jane Jones



R&B VEHICLE SERVICES
Est. 10 years

01454 238700

REPAIRS, SERVICING
DIAGNOSTICS, BATTERIES
TYRES, EXHAUSTS
FOR CAR, 4 X 4 & LIGHT VANS
FREE LOAN CARS AVAILABLE
YOU CAN NOW BOOK YOUR MOT
ONLINE AT
www.mottetbury.co.uk



1 MILE FROM WESTONBIRT ARBORETUM

COST EFFECTIVE MAINTENANCE AT A FRACTION OF DEALER PRICES
CALL RICHARD OR BEN FOR FRIENDLY, RELIABLE SERVICE

- Physiotherapy
- Homeopathy
- Podiatry
- Chiropractic
- Aromatherapy
- Reflexology
- Acupuncture
- Holistic Massage
- Sports massage
- Nutritional Advice
- Pilates Exercise Classes

TOLL HOUSE CLINIC

Freephone 0800 0936 362 Telephone 01454 32 22 32
www.tollhouseclinic.co.uk
47 Horse Street, Chipping Sodbury, BS37 6DA

Surprisingly Resolute

Feeling sorry for myself during a bout of pre-Christmas flu, I decided I needed something more powerful than paracetamol to tackle my symptoms. So I tried the psychological approach: visualisation. I imagined how I'd feel if I was better. I started to picture myself doing healthy, vigorous things in the open air, in sunny spring weather, quite unlike the raging storms that were beating against my bedroom window.

I discovered I was frighteningly suggestible: before I knew it, I'd reached for my laptop and signed up to run the Bristol 10K next May. This also made a splendid New Year's Resolution. I coasted into the Christmas festivities with confidence, knowing that I'd soon be running off all those mince pies.

This was a prime example of Janet's Theory in action - a phenomenon I named after my sister-in-law's insistence that "the best way to get something done is to do something else". The most memorable example she gave, in an unguarded moment at a dinner party, was "If you want to get your nails really clean, make pastry". The apple pie she'd made for pudding suddenly seemed less appetising.

I've seen her theory proven many a time. Getting my car valeted provided my husband with a new mobile phone. (The valet found one I'd lost - and replaced - underneath the driver's seat.) Taking my car to be MOT'd equipped me with a whole new wardrobe. (Killing time while I waited in the high street, I discovered my favourite clothes shop was having a big spring sale). And if I ever want the house spring cleaned, I know exactly what to do: plan a party. That always triggers weeks of scurrying round to get the place respectable before the big day.

So if you have the misfortune to catch a cold this winter, I suggest you give the Lemsip a miss and let your imagination provide the cure. You never know what it might lead to.

I wish you a healthy and happy New Year!

Debbie Young

For more of Debbie's blog, visit
www.youngbyname.wordpress.com)

Kind Feedback

We receive many lovely thank-yous and kind feedback messages from our readers and contributors, especially during the festive season and we thought we would just share a few with you... They really do raise the spirits when deadlines are looming!

"The monthly Hawkesbury News is essential reading for anyone interested in your beautiful village, so as to keep up to date with village events and interesting articles written by locals and those living further away"

Douglas Sims
Exeter

"May I wish you all a very Happy Christmas and New Year and thank you for all the hard work you put in, producing a magazine that is second to none!"

Peggy Woffenden

Thank you to all our readers, advertisers, contributors and deliverers for your support throughout the year.

Without the wide range of contributions we receive there would not be a village magazine.

Happy New Year to you all!



Garden Projects undertaken
Patios & Ponds built
Interior & Exterior painting
Tiling & Carpentry



Barry Yuill 01454 238162
Mobile: 0779 438 5352

TV or Satellite Problems?

Digital Switchover, Tuning,
Cabling, Freeview, Freesat,
Multiroom/Sky Eye, Internet TV

Free estimates
Friendly local service
07710 794314 or 01454 238418

McTimoney Chiropractic Tolsey Surgery, Sherston

Treating back & neck pain,
migraines, sports injuries & more

Emma Newby BSc MMCA

01666 841 402

www.mctimoneychiro.co.uk

Hawkesbury Cricket Club

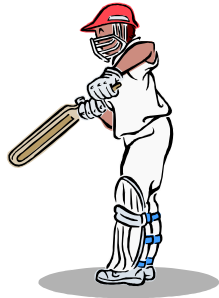
Junior Indoor Nets

January 7th/14th/21st

February 4th/25th

Hawkesbury Village Hall
2-3pm for 8/9/10 year olds
3-4pm for 11/12 year olds

£10/child,
payable at
first session.



Contact sarawhite@uwclub.net or
tel: 01454 238554 to secure your place.

Hawkesbury Stallions Football Club



January Fixtures

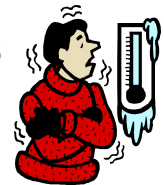
Date	Opponents	Venue	Kick-off
14 th January	Chalford 3rds	The Rec	2.00pm
21 st January	Old Richians 3rds	The Rec	2.00pm
28 th January	The Village	The Rec	2.00pm

Brrr!!! Feeling cold?

Get government-subsidised insulation and get warm!

nPower is offering loft insulation delivered to your door for £1 per roll. This price is subsidised by the government to ensure more houses get insulated. The current standard is 270mm of insulation in the loft - for those of you who work in imperial that's about 11 inches, or almost a foot of insulation!

We know that some lofts still aren't insulated, and many that are have only been done to the old, thinner standards. Meanwhile heating isn't getting any cheaper. nPower estimates a typical uninsulated 44m² loft would cost £19 to insulate, and would save £175 on your annual heating bill - so you'd get the money back before the end of this winter. You can find out more by phoning **0800 975 6617**.



**Cotswold Edge
Sustainability Network**

Well I never!

More people are killed annually by donkeys than in aeroplane crashes.

The monkey wrench was invented by Charles Moncke.

Apples are more effective at keeping people awake in the morning than caffeine.

'Honcho' comes from the Japanese word meaning 'squad leader'.

Devon is the only county in Great Britain to have two separate coasts.

An elephant's trunk can hold 2 gallons of water.

A shark can grow a new set of teeth in a week.

The ant can lift 50 times its own weight and can pull 30 times its own weight.

A quarter of the 206 bones in the human body are in the feet.

❖❖❖❖ TILING SERVICE ❖❖❖❖

Professional tiling at competitive prices

Friendly, reliable, courteous service

For a free quotation, please contact

Peter at Artisan Tiling

0796 0645893 artisantiling123@aol.com

Beaufort Minibuses & Taxis Ltd

4 6 8 16 24 seats

Specialists in Disabled Transport

Accounts Welcome

Advanced bookings only -

call Andy on 01454 313721

beauforttaxi@aol.com

From the Reverend Alveen Thoresen St Mary's Hawkesbury

Tel. 01666 890548

Ramblings from the Rectory

New Year resolutions? What are they? I should forget them now if I were you – it will save doing it later! After all, you never know what tomorrow may bring that will make them all irrelevant. A daily prayer for the new year, on the other hand, might hold within it all resolutions and possibilities:

Just for today, Lord, open my eyes to perceive your presence,
Open my mind to discern your way,
And open my heart to receive your grace. Amen

May the love of the Lord Jesus enfold you,
The joy of the Lord Jesus fill your lives,
The peace of the Lord Jesus be in your hearts
And every blessing of God be upon you and remain with you,
Every new day of this new year.

A very happy New Year to you all!

*Rev'd Alveen Thoresen
St Mary's Hawkesbury*

Church Services in January 2012 For St. Mary's and the Methodist church

Date	Time	Service	Readers	Readings	Sidesmen
01st Jan	11 am 6 pm	Leighterton Mattins Sopworth Evensong-Communion			
08th Jan	10 am	Methodist Church Sunday School			
	6 pm	Evensong for Epiphany	Mr J O'Brien Mrs B Stephens	Gen 1 v 1 - 5 Mark 1 v 4 - 11	L Fairney
15th Jan	0945 am	Morning Praise	Mr A White Mrs S Couzins-Short	1 Samuel 3 v 1 - 10 + {11 - 20}	D Musty
22nd Jan	10 am	Methodist Church Sunday School			
	6 pm	B.C.P. Communion	Mr M Bendry Mrs J Gardener	Gen 14 v 17 - 20 Rev 19 v 6 - 10	H Rogers
29th Jan	4 pm	Christingle Service	T.B.A		M Beresford
05th Feb	0945 am	Candlemas - Morning Praise Communion	Ross Lawrence Mrs D Musty	Isaiah 40 v 21 to the end 1 Corinthians 9 v 16 - 23	Mr A Craig

If you are unable to attend please telephone Linda Fairney: 01454 238553
Should you wish to speak to Revd. Alveen call: 01666 890 548

Church Cleaners:

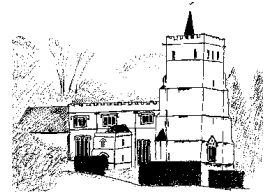
Mrs P Bendry
Mrs P. Setterfield

Church Flowers:

Mrs B. Salthouse

Please note the early time for the Christingle Service

St Mary's Church News



Churchwardens Mrs Linda Fairney 238553 & Mrs Mary Davies 238657
Keys for cleaners/flowers/church sitters please contact Mary Davies 238657 if possible
the day before to arrange for collection.

"This is the verdict: Light has come into the world, but men loved darkness instead of light because their deeds were evil." John 3 : 19

After the excitement of Christmas and New Year, the church is fairly quiet during January. However, we have an **Epiphany Evensong** at 6.0 pm on **8 January**, when we celebrate the visit of the Wise Men to the Infant Jesus. On **29 January**, at 4.0 pm, we are looking forward to a **Christingle service**. Christingle is the biggest fundraising event organised by the Children's Society in aid of their work in support of children in any kind of danger, and the service is for people of all ages, but of course especially for children. There will be a workshop to make the Christingles (details to be announced). They take the form of an orange, representing the world, God's creation, with a red ribbon round the middle, which shows the love and blood of Christ. Stuck in the orange are four cocktail sticks with dried fruit and sweets, which symbolise the four seasons and the fruits of the earth, God's gifts to us, while in the top of the orange is a candle, Jesus Christ, the light of the world. There will be a Christingle for everyone, so come and join us in celebrating the love of God, and in supporting the valuable work of the Children's Society

Sadly, I was unable to be at the school's wonderful event, **Hosanna Rock!** On 14 December, but I understand it was very successful and enjoyed tremendously by everyone there. Congratulations and thanks to all who took part. It was lovely to see so many people having good fun in church. Do come again on another occasion.

We would very much like to thank everyone who has helped this year with the Advent lunches. They are a good opportunity to catch up with friends and exchange news, and the soup is always delicious! It is also an occasion when we raise money for people in greater need than ourselves, and heaven knows there are enough in the world today

We extend to everyone our warmest wishes for 2011. We live in difficult times, and much will be asked of us, but if we can be there for one another, to support our neighbours who are in trouble, we will survive together and live to see better times! Hawkesbury is a lively, supportive village, and the church is very much part of that informal, supportive network. Don't forget that you can call on us whenever you need us.

Dates for your diaries

8 January 6.0 pm – Epiphany Evensong

29 January 4.0 pm – Christingle service

Jennifer Oldershaw

Report from St Mary's Church

2011 Has seen the culmination of the Restoration work on the windows in St Mary's and the installation of our beautiful new stained glass roundals commemorating the life of St. Wulfstan. This could not have been achieved without the wonderful generosity of the people of Hawkesbury Upton, for which we are truly thankful.

The work was driven and overseen by the tireless Mary Beresford. The number of hours she spent down at the Church with Designers, Builders, Glaziers, Architects, talking to people about which particular window they would like to sponsor, and listening to the memories behind them will never be known.

Mary has a love for our Church that many people share. They include the people who give up their time to clean, arrange flowers and help decorate for festivals, tend the Churchyard and to the walls and the paths. They all work quietly and tirelessly to maintain St. Mary's in its enviable condition we find today. We do thank you all most sincerely.

2012 will see further but different challenges for St. Mary's With the retirement of Revd. Mullholland we are having to face the prospect of him being replaced by a part time Incumbent. This is because we are unable to pay the cost of a full time vicar, and have in the past been subsidised by other Churches outside the Benefice.

We are still in discussion with the other Churches in our Benefice to see if we can find a way forward. We feel that Hawkesbury deserves and would indeed benefit from full time Ministry and that St. Mary's should be loved and used for many years to come.

Bill Fairney

Friends of St Mary's



The Friends' Committee would like to sincerely thank everyone who has supported us at our various fundraisers this year – to all those who have decorated, baked, washed up, served Pimms and generally helped organise our functions. The restoration of the church windows has been a major project, and we are grateful to all Friends who donated to the FOSM window. Without you all we simply could not support the PCC in protecting the fabric of our beautiful parish church. We wish you all a very Happy Christmas.

Anyone wishing to become a member of the Friends of St Mary's please contact the secretary, Pauline Setterfield, on 238307. Membership fees are still only £5 single or £7.50 joint per annum. Life membership is £100 single or £150 joint.

o o o

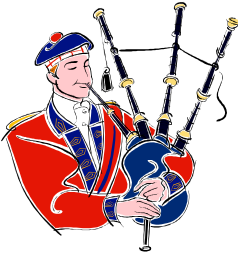
Saturday 28th January 2012 at 7.30pm

Hawkesbury Village Hall

Burns' Night Celebration

Reserve your tickets now for our annual celebration of Robert Burns

Ticket will include four course dinner:-



Starter

Haggis, neeps and tatties
served with a tot of whisky

Dessert

Cheese and Oatcakes



The evening will begin with Piper Calum Mor.

Dinner will be followed by traditional speeches, music and dancing

This is one of the most enjoyable evenings in the Hawkesbury calendar,
so reserve your places in good time.

Tickets £25 from Linda Fairney 238553 and Pauline Setterfield 238307



STEVE DUKE

All general Plumbing work

- Complete Bathroom Installation
(including ceramic tiling)
- Water Softener Specialist
- Radiators etc.

FREE QUOTATIONS FULLY INSURED

Please phone 01454 299993 or 07881 555883

TREE TRIMMERS

PROFESSIONAL TREE SERVICES

Our qualified and insured arborists undertake all aspects of tree, hedge and shrub work

For a free, written quotation and advice please call

01454 322823

07905 578993 or 07854 258341

Covering all of the Hawkesbury Parish area

BETHESDA CHAPEL

PARK STREET, HAWKESBURY UPTON

Services for the month of January 2012

Sunday January 1st 10.30 am. Speaker Rev. Philip Hopes (Re-dedication Service)

Sunday January 8th 10.30 am. Speaker Mr. Ray Hollister

Sunday January 15th 10.30 am. Speaker Mr. Paul Fellowes

Sunday January 22nd 10.30 am. Speaker Mr. Mark Hearsom

Sunday January 29th 10.30 am. Speaker Mr. Alan Tarling (Family Service)

BETHESDA ADVENTURERS MEET DURING MORNING SERVICE

The fellowship of Bethesda wishes everyone a Happy and Blessed New Year

At the start of a New Year in an uncertain world we all need hope! However Christian hope is not simply wishful thinking, it looks to God's purpose for our lives and world.

Psalm 121 is a psalm of hope in which God is portrayed as One who watches over us and protects us on our journey through life. "I will lift up mine eyes to the hills. From whence cometh my help? My help cometh from the Lord who made heaven and earth"

Rev. Philip Hopes

SALE

In aid of the orphans in the Philippines

Rev. Bob Miles

For Sale boots, shoes, slippers, handbags and purses

all 25% to 50% off

Saturday 28th January 2012

10am. - 4.00pm. In Bethesda Chapel Schoolroom

Please feel free to come and browse and enjoy the



refreshments available tea, coffee, cakes and soup

For further details please contact Diana 01454 238472

THE METHODIST CHURCH

BACK STREET, HAWKESBURY UPTON



Services for January 2012

Sunday January 8th	10.00am	Rev. P Edwards – Covenant Service Sunday Club for children attending
Sunday January 15th	9.45am	Morning Praise at St. Mary's
Sunday January 22nd	10.00am	Rev. P Edwards Sunday Club for children attending
Sunday January 29th	10.00am	Mrs P Kernaghan Sunday Club for children attending

Honey or Vinegar

Bible teacher Robert J. Little wrote about two jars whose contents looked the same but were actually quite different.

When the first jar was turned on its side, vinegar ran out.

Then the other jar was tipped over and honey came out of it.

The two jars appeared to be similar, but when they were upset their true contents were revealed.

An excellent test of character is the way a person reacts under the pressure of a difficult situation.

Under normal conditions, most people behave in a socially acceptable manner.

They give the impression that everything is under control.

When they are caught off guard or are unexpectedly upset, however, they reveal their true disposition.

What is deep down inside of us will spill out when we are tested.

Our reactions to pressure can reveal what we are. Jesus said, "Out of the abundance of the heart his mouth speaks" (Lk. 6:45)

What comes out of your heart—honey or vinegar? When someone does something you don't like, how do you react?

By maintaining your fellowship with God and relying on His Holy Spirit's guidance, what spills out of you will be pure and good.

When irritated and upset,
Do you explode and gripe and fret?
Or is your life controlled inside
Because in Jesus you confide? (anon)

Our true character is revealed in the unguarded moment.

*Rev Paul
Methodist Minister*



PUMPKINS NURSERY

Badminton and Tormarton

Nursery care and pre-school education
catering for children aged 1 – 5 years
Open all year 8am – 6pm

Nursery Education Grant funded sessions available

Forest School sessions run at both settings

For more information or to request a prospectus
contact Amanda Wallis on **01454 219400/218747**
Or visit our website: www.pumpkinsnursery.co.uk

DOLPHIN WATER SOFTENERS LIMITED

*Alderton 4, Priory Park, Priory Industrial Estate,
London Road, Tetbury, Glos. GL8 8HW*

- **Tablet Salt** - £8.25 per 25kg bag
- **Granular Salt** - £8.25 per 25kg bag
- **Block Salt** (Harveys & Kinetico) - £4.70 per 2 x 4kg blocks

Available for collection from 1-5pm Monday to Friday *or*
delivery service available within a 10 mile radius of Tetbury
FOR MORE DETAILS – Tel: 01666 500065 Fax: 01666 504911

Email: njkind@btinternet.com



Electric Picture House

"Best Market Town Project"
South West Market Town Awards Scheme 2006

We Need to Talk About Kevin, Cert 15, 112 mins

(Lynne Ramsay, 2011) When 15-year old Kevin (Ezra Miller) goes on a horrific killing rampage, his mother Eva (Tilda Swinton) grapples with her own feelings of grief and responsibility... did she ever love her son and how much of what Kevin did was her fault? Based on the bestselling novel by Lionel Shriver. "Guaranteed to haunt you for days" Empire

Full details <http://www.wottoneph.co.uk/FS/WeNeedToTalkAboutKevin.html>

Thursday 29 December 7.45

The Help, Cert 12A, 146 mins

(Tate Taylor, 2011) In 1960's Mississippi, Skeeter (Emma Stone) sets out to write a book about the experiences of black maids working for white families, with explosive results. Based on the bestselling novel by Kathryn Stockett. "Heartfelt and hilarious" Time Out. Full details <http://www.wottoneph.co.uk/FS/TheHelp.html>

Tuesday 27 December 7.45 Friday 30 December 7.45

Thursday 5 January 2.00

Arthur Christmas 3D, Cert U, 97 mins

(Sarah Smith, 2011) Ever wondered how Santa delivers all those presents in one night? Find the answer and a whole lot of fun in this delightful animated adventure for all the family from Aardman Animation! "Great Big Joy!" Empire

Full details <http://www.wottoneph.co.uk/FS/ArthurChristmas.html>

Thursday 29 December 2.00 Saturday 31 December 2.00

Sunday 1 January 2.00

Midnight in Paris, Cert 12A, 100 mins

(Woody Allen, 2011) While visiting Paris, disillusioned writer Gil (Owen Wilson) finds himself transported back to the 1920's on the stroke of midnight. There, he finds inspiration for the novel he is writing and for his relationship with his fiancée (Rachel McAdams). "Light, assured, and utterly charming" Empire

Full details <http://www.wottoneph.co.uk/FS/MidnightInParis.html>

Wednesday 28 December 8.45

Father of My Children (2009), Cert 12A, 110 mins

Grégoire Canvel (Louis-Do de Lencquesaing) is an independent film producer who runs a well-respected production company, Moon Films. For Grégoire, to work is to live, and while he loves his wife, Sylvia (Chiara Caselli), and their three daughters, Clemence (Alice de Lencquesaing), Valentine (Alice Gautier), and Billie (Manelle Driss), during the week he's practically a stranger to them. Grégoire makes a point of spending each weekend with his family at their cottage in the country, but even then separating him from his cell phone is all but impossible, and Sylvia and the girls are reaching the end of their patience with Grégoire and his obsession with work. Though there's no question that Grégoire is devoted to Moon Films, he's kept a secret from Sylvia and his daughters about the state of the company, and it's not until a sudden, desperate act forces Sylvia into leadership of the company that they come to understand the real reasons behind his unrelenting schedule.

Full details <http://www.wottoneph.co.uk/FS/FatherOfMyChildren.html>

Sunday 1 January 7.45

Coming Soon (and available for booking online):

Wuthering Heights, Cert 15, 128 mins - 03 January

My Week With Marilyn, Cert 15, 98 mins - 04 January

Deep Blue Sea, Cert 12A, 98 mins - 05 January

Happy Feet 2 3D, Cert U, 103 mins - 07 January

Resistance, Cert PG, 92 mins, 11 January

Dates To Be Confirmed

Puss In Boots

The Iron Lady

Wotton Electric Picture House
18A Market Street, Wotton-Under-Edge
Gloucestershire, GL12 7AE

01453 844601 - general enquiries

(during opening hours)

01453 844401 - 24 hour recorded message

Information is correct at time of going to press. Please call for the latest details.

Find us on Facebook - Electric Picture House

Follow us on Twitter - @WottonCinema

Buskins Shoe Shop
Nailsworth

- Ladies shoes
- Mens shoes
- Bags & purses

Tel: 01453 836836

www.buskins.co.uk

Philippa J Satchwell MCSP
Body Control Pilates Instructor
& Fitness Consultant



REPs (Register of Exercise
Professionals) Level 3

For information on classes
and 1:1 sessions please
tel. 01454 238216

e-mail: phil.satchwell@btinternet.com

Classic Updates Decorating

Realistic 'Credit Crunch' busting prices

**Local, experienced Painter and
Decorator, providing a clean, tidy and
courteous service.**

To book a free, competitive quotation

Contact Sally

01454 313712 or 07787 192341

**Westonbirt wood sales
Saturday 14 – Sunday 15 January**

10am-1pm

Proceeds go to the Friends of Westonbirt Arboretum, so cash or cheques only please. Follow signs from the car park on arrival.

Call 01666 880220 or
woodsales@fowa.org.uk

**Just announced at
Westonbirt Arboretum for 2012**

Plan B - Sat 23 June

Tickets cost £32.00 (subject to booking fee)

Will Young - Fri 22 June

Tickets cost £35.00 (subject to booking fee)

Available from the Forestry Commission box office tel 03000 680400 or buy online at
www.forestry.gov.uk/music

Saturday 14th January 2012

**Steve Tilston Trio
with Keith Warmington
& Stuart Gordon**

Celebrating 40 years in the business, Steve Tilston is one of our finest songwriters and an ace guitarist too. Joined by virtuoso harmonica player Keith Warmington and Stuart Gordon, one of the best improvising violinists in the country, performing beautiful arrangements of songs old and new.

This talented trio formed for a one-off show recently, it sounded superb and they enjoyed playing together so much, they decided it would be fun to do more, so here they are tonight 8pm at Under The Edge Arts in the Chipping Hall Wotton under Edge GL12 7AD. To book ring 07791323869
www.utea.org.uk

**Chipping Sodbury Music Society
Concert:**

**London Brass Symposium
Quintet**

Tuesday 3rd January 2012
7.30pm, Town Hall,
Broad Street, Chipping Sodbury

Stuart Jenkins - trumpet, Dominic Cotton - trumpet, Gillian Jones - French horn, Graeme Boyd - trombone and Marc Easener - tuba.

"A New Year's Cornucopia" including music by Bach, Bleazard, Gershwin, Gounod and Handel

Members: 7 concerts for £55 • Visitors: £12 per concert • Free admission for children of school age.

**Westonbirt School Lecture - "Life on a TV Rostrum" -
27th January**

By celebrity antique auctioneer James Braxton. A compelling eye-opener into the world of both antiques and television.

7.30 pm Admission Free. Optional post-lecture supper £15 per head bookable in advance by Friday 20 Jan. Tel 01666 880333 or email lreid@westonbirt.gloucs.sch.uk

Scrub Cutting at Nind, nr Wotton

Conservation Taster Day: have fun - Learn new skills - get fit!

Lower Woods nature reserve Coppicing - part of the programme of restoring traditional woodland management to this ancient landscape.

Tools and training provided - Wear stout clothing and boots

For more details call Ellen Winter on 07739 297309



Hawkesbury Parish Council



If you are new to the Village or have lived here for years, here are a few details that you may like to know regarding your local Parish Council Meetings.

They are generally held on the first Monday of every month at Hawkesbury Parish Hall at 7.30pm in the upstairs meeting room. The agenda is posted on the Parish Notice Board prior to the meeting. This provides details of all the items that will be discussed, in addition under Councillor's items each Councillor has an opportunity to raise items, although no firm decisions can be made until it has been advertised on the next agenda. At times it is necessary for the Parish Council to meet on the 3rd Monday of each month to discuss any additional planning applications that may have arrived, the Parish Council has 21 days to respond to the South Gloucestershire Council.

Do you have any issues or concerns that you would like to raise with the Parish Council? Would you like your Parish Council to listen whilst you express your views, why not attend the next meeting? Public participation is limited to 5 minutes per speaker; this should give you sufficient time to talk to the Parish Council. Alternatively, you can come along and listen, and hear of the work that the Councillor's are involved in for the Parish of Hawkesbury, you do not have to stay for the whole meeting and you are free to leave at anytime.

Once the minutes of the meeting have been approved and signed as a true record it is placed on the Village Website; www.hawkesburyupton.com for everyone to view. This is normally a month in arrears.

Date's of the main 2012 Parish Council meetings.

9th January
6th February
5th March
2nd April-Annual Assembly
14th May Annual Meeting
11th June
2nd July
6th August
3rd September
1st October
5th November
3rd December

Please note that these dates may need to be altered at anytime. The Parish Clerk can be contacted on telephone number 01454 238074.

Parish Clerk - Mrs Hazel Jones 2, Fox Close, Hawkesbury Upton, Badminton, South Gloucestershire, GL9 1EQ

Tel- 01454 238074

e-mail- parish council@ hawkesburyupton.com

CORNWALL 2011

Directly adjacent to the North Coast footpath, our stunning apartment is again available to rent. With 2 bedrooms/bathrooms it is our special retreat and has all the comforts of home.
Phone Chris on 07931 584810 for details.

J & H SERVICES LTD

10 NORTH STREET WICKWAR
TEL 01454 299940 07967 304942

ELECTRICAL & HOME SECURITY

ALARMS FOR HOME/OUTBUILDINGS
SECURITY GATES, FIRE ALARMS
FULL SERVICE FROM £40

FULL OR PART REWIRES
TESTING AND INSPECTING
NICEIC PART P APPROVED

THE BEAUFORT BUREAU

OFFICE SERVICES FOR YOU

Photocopying : faxing : scanning :
computer training : design :
programmes : leaflets : tickets
and much more

CONTACT

01454 238411/417/174

District Councillor Report

The future of South Gloucestershire

After a long debate, with many contributions from the public, Councillors agreed to the South Gloucestershire Core Strategy on Wednesday 14th December.

The Strategy sets out the overarching development vision for South Gloucestershire until 2026 and aims to deliver the new homes, jobs and services that are needed to sustain the district's communities, without compromising their separate identities character or the local high-quality environment.

Without this document, there is a genuine risk of unplanned development so it was essential that progress was made with the strategy. There were many calls to keep Filton Airfield as a designated airfield, but the owners of the land, BAE intend to close it by the end of 2012. As well as houses, land is also designated for employment use.

Overall the strategy makes provision for up to 26,400 homes. Of this total 4,060 homes have been completed, requiring an additional 22,340 dwellings over the next 15 years from 2012.

The plan makes clear that the council will continue to give protection to the green belt and open countryside which South Gloucestershire has continuously considered are not appropriate locations for development.

IMPORTANT* * * * * Broadband Survey

Fill in as soon as possible to register your demand for better broadband – www.southglos.gov.uk/broadband
Please help publicise this as it is important we get as many people to respond as possible, and despite the long consultation time, please fill in as soon as possible, as results are being collated all the time,

Traffic Calming- LET ME KNOW YOUR VIEWS

Plans for 20mph outside school have finally been produced. It is proposed to bring the lower speed limit in between the two sets of flashing lights.

Plans for an environmental weight limit to restrict the weight of traffic to 7.5tonnes coming though the village from the A46. If you would like to view the plans, please contact me, and let me have your comments.

Dropped Kerb

A small budget for a further dropped kerb in the parish has been found. I have asked for this go at the top of Sandpits Lane/France Lane.

Mud on Road

Many complaints have been received about the mud on the road along Highfields. This is a process of spreading waste on the fields which is regulated and licensed by the Environment Agency. The company responsible have agreed to make good the verges and stick to the agreed routes for their vehicles.

Commons – Work off those Christmas inches – a volunteer work day on the – two further 16th January 2012 at 10.00am. See www.hawkesburycommon.co.uk for full information.

Season's Greetings one and all, and best wishes for 2012.

Cllr Sue Hope
01454 238673

sue.hope@southglos.gov.uk
07860 239600

A - Z CLEANING AND DOMESTIC SERVICES

Let us make your life easier

Local, Friendly and Reliable service.
Regular Cleans (weekly, fortnightly, monthly)
One-off Tenancy Cleans.

We also provide a collection and delivery Ironing Service.

For further details, please contact Anita on
07855 382652 or 01454 261411

To advertise your company
or services in the
Hawkesbury Parish News,
email us at :

parishnewsads@hawkesburyupton.com

and reach a
wide local audience.



ClimateSouthWest

'Water, Water Everywhere...?' - photo competition Deadline Extended Win 5 Family Day Out Passes with the National Trust, plus a water butt

The South West is certainly no stranger to rain! Yet Spring 2011 was the driest for more than 20 years, and the second driest since 1929. Whether too much or too little, the amount of water we receive has a big effect on our lives and our environment.

As many affected communities know, heavy rain can do more than just catch you out without a brolly. The Cornwall floods in November 2010 blocked transport routes and affected more than 200 properties. Equally, prolonged dry weather can destroy farmers' crops or increase the risk of wildfire, as we saw on Dorset's heaths this June.

On the bright side, rain in the South West's keeps our countryside green and lush, and dry weather combined with our fantastic beaches can be a great boost for our tourist economy.

Climate change is likely to bring more extremes in rainfall, finding ways of reducing and coping with flooding, using water wisely and making the most of opportunities from both wet and dry weather, will become ever more important.

Climate SouthWest would like to showcase your photos that demonstrate the impact that too much or too little water has on our region. Photos could include examples of how we are, affected by either extreme wet or dry weather in our day to day life.

Entries are invited under two categories:



Wet



Dry

As well as a prize for an overall winner, there will be 2 prizes of a £50 voucher for the best photo in each category, and a £50 voucher for the best photo taken by an **Under-16**. The top prize is 5 family day out passes to National Trust Places*, plus a water butt kindly provided by Bristol Water.

The photo **must have been taken in the South West of England** by yourself, any time from 1960 to the present day. **The deadline for entries is Sunday 19th February 2012**. Photos will be judged according to both their quality and relevance to category theme, with the winners announced during Climate Week: 12th – 18th March 2012.

For further details of how to enter the competition, please see the next page.



National Trust

*The National Trust cares for historic houses, countryside and coastline across the south west and is increasingly seeing the impacts of the changing climate on the historic and natural environment. With the first prize of 5 National Trust Family Admission Passes, you can enjoy 5 ready made days out for all the family at over 150 houses and gardens across England, Wales and Northern Ireland. The National Trust offers one of the best ways of getting out and about with the family with a wealth of attractions to choose from, many of which have special activities and attractions for children to help them enjoy their visit. The Family Passes give 2 adults and 2 children one-day's free entry to a National Trust house or garden.

Category prizes sponsored by:



ovenu ..punctuality, pride, courtesy & quality all come as standard..
oven va service **Wet**

- Range & AGA specialist
- Ovens and hobs
- Extractor hoods

the UK's favourite oven cleaning specialists

LET US HELP
call Clive Wallace on
0117 932 5115
07825 709 354
I look forward to
hearing from you
www.ovenu.co.uk



COUNTRY PROPERTY

theauctioneer.biz
PROPERTY AUCTIONEERS

Nick Cragg FRICS FNAEA
01454 321339
Specialist Property
Sales Lettings Consultancy
South Gloucestershire
www.countryproperty.co.uk

Conditions of entry

This competition is open to everyone, but photos must have been taken in the South West of England between 1960 and the present day.

You must be the photographer and owner of the copyright for any image entered.

If your photo features an identifiable person(s) *you must gain their permission for the photo to be published, before entering it in the competition.*

Entrants can submit a maximum of 2 images to this competition.

We recommend that digital submissions are of a high resolution (between 1 MB and 5 MB).

Photo prints/negatives submitted via post should be clearly labelled with your name. If submitting a negative, please enclose a reference print (though this can be any size and does not need to be of high print quality)

By entering this competition, you grant Climate SouthWest a non-exclusive license to display your photograph in connection with this competition and in future Climate SouthWest communications (for non commercial use only). Photographers will always be credited alongside their image.

The deadline for entry is Sunday 19th February 2012.

The first prize is 5 family passes for 2 adults and 2 children, each giving one free entry to a National Trust attraction.

How to enter

Complete the entry form below and email it, along with your photo to: climatesw@environment-agency.gov.uk. Alternatively, you can post the entry form and photo (with negative if possible) to:

Climate SouthWest
c/o Environment Agency
Manley House
Kestrel Way
Exeter, EX4 7LQ

Please note that we cannot accept responsibility for any entries that are lost or delayed during postage. If you are posting us your photo/negative and want it returned after the competition closes, please enclose a stamped-addressed envelope and ensure that the image is clearly labelled. Entries received after the deadline Sunday 23rd October cannot be accepted.

A form should be completed for each photo submitted. If you have any questions, please contact Alex Webb (01392 442125) or Virginie Ba (01392 352230) at Climate SouthWest.

About You

Name:	
Email address:	
Contact telephone number:	
If you would like to enter your photo in the Under16 category, please give your date of birth (You may enter your photo in any of the 4 categories).	

About your photo

Category entered (<i>Wet or Dry</i>)	
Photo location (<i>please be as specific as possible</i>):	
Date photo taken (<i>approximately</i>):	
If you would like to provide further explanation of what your photo shows, please do so here:	
By entering this competition you are agreeing to your photo(s) being used by Climate SouthWest, as outlined in the conditions of entry above.	

HOME COMPUTER PLAYING UP? NEED SOME HELP? DON'T DESPAIR!

For help with:

- Windows 98, Me, 2000, XP, Vista and 7
- The Internet, Wireless Router Setup
- Hardware Upgrades and Repairs
- PCs custom built to order

No problem too small or too large!

Contact: Lloyd Buckingham

Tel: 07940 155064

or 01454 260504

Email: lb_cs@hotmail.com

LB Computer Services 

**YOUR LOCAL, LOW COST,
HOME COMPUTER REPAIRER**



Down to Earth Tree Care Ltd



Full tree surgery (including rope and harness work)
garden maintenance services

Call Graham Chamberlain for free advice or quotation.

Tel: 0778 606 4803 or 01454 294520

NPTC qualified and insured practitioners

Hawkesbury Parish Council

During the meeting the following applications were discussed:

App. No.	Address	Description
PK11/3209/RVC	Inglestone Farm Chase Lane Inglestone Common Badminton	Removal of condition 2 attached to planning permission PK11/1620/F to remove the need for landscaping details.
The Parish Council totally objects to the removal of condition 2 attached to planning permission, PK11/1620/F. It is a general condition and the applicant must put forward a scheme as there is no reason for this to be dropped		
PK11/3173/LB	Inglestone Farm Chase Lane Inglestone Common Badminton	Application to retain the works carried out for internal and external alterations including rendering, additional stonework and alterations to doors and windows.
<p>Parish Councils Comments</p> <p>Hawkesbury Parish Council object to the retrospective application for works to keep the external and internal alterations of buildings within the Listed Building Curtelage of Inglestone Farm.</p> <p>In the application form the agent stated that the works carried out could not be seen from the public highway or footpath – this is not the case.</p> <p>It has been noted that works to the outside of the holiday let area (previously cow barns) have been altered by removal of wooden facing to the building in the court yard area, to render. Also there has been removal of healthy large shrubs in the car parking area of the courtyard. The removal of these items has altered drastically the visual impact of the area. The original wooden boards on the building kept the area separated from the main house and allowed the visual impression that the building was formerly agricultural but had been altered sympathetically to residential use.</p> <p>In 1992 the original application for planning for the cow sheds has two amendments, these both said that the walls facing the courtyard were to be of wooden boarding only the west side barn to be rendered. In 1997 the barn on the left side of the courtyard also came up to planning, again with wooden boarding to the courtyard area. The courtyard was landscaped and this nicely demarked the parking areas and added softness and privacy to the holiday units. The Parish Council do wish to see the reinstatement of the vegetation and wooden boarding as it was originally (photographs to be sent to the Planning officer).</p> <p>The internal alteration of the holiday units should have enough area for the occupants (not including the bedrooms) as laid down by Visit Britain standards (extracts enclosed), they have over many years found the space needed for each visitor in a unit, these can be used as a template for the new areas applied for in the holiday units.</p> <p>We have no proposed plans sent to us in the application so cannot comment regarding the internal alterations.</p>		
PK11/3042/RVC	4 & 5 Petty France Cottages, Petty France, Badminton	Variation of condition 4 attached to planning permission PK07/0693/RM to revise the landscape plan
<p>Comments regarding the above planning application;</p> <p>The Parish Council Objects to the variation of condition 4 attached to planning permission PK07/0693/RM for the following reasons;</p> <p>The Parish Council would like to see the original planting of hedges maintained to separate the driveways. The original planting of shrubs maintained rather than the trees, as these may interfere with the septic tank. The PC would like to keep the amenities and noise to a minimum and there are concerns regarding safety. The boundary wall to be repaired at a height of 1.4m as per the original approved plans and not 0.5m as requested.</p> <p>"Because of the further garage developments; it is important to keep the original planting scheme to maintain the residential amenity for residents."</p>		

MORGAN
Plastering Services



INTERNAL/EXTERNAL
RENDERING
ALL FINISHES
COVING
DRY LINING
RELIABLE SERVICE
15 YEARS EXPERIENCE

Call now for a quotation
01454 850294
MOBILE 07909 937226

**TRADITIONAL STONEMWORK
& POINTING SPECIALIST**

- Dry Stone Walling
- Brickwork & Blockwork
- Block Paving
- General Building
- Stone Tiling

STEVE GREEN
01454 238454 (after 5pm)
Mobile: 07813 245550

Penthouse apartment (sleeps up to 8) in Altinkum / Didim, Turkey

Fully fitted kitchen, two bathrooms, four bedrooms from £50 per person

On the Aegean coast,
gorgeous sandy beach

For further details e-mail
m-munro@hotmail.co.uk
or call 01454 238 174

Hawkesbury Parish Council (continued)

PK11/3311/TCA	The Retreat France Lane Hawkesbury Upton Badminton	Works to fell 2 no. Horse Chestnut trees, Coppice 2 no. Hazel trees and prune by one third 8 no. plum trees all situated within the Hawkesbury Upton Conservation Area	No Objection
PK11/3284/F	Starveall Barn Beech Lane Hawkesbury Upton Badminton	Conversion of barn to include raising of roofline and single storey rear extension to form 1 no. to holiday let and associated works (Re-submission of PK11/1960/F)	
<p>Parish Council's Comments;</p> <p>No objection to the Holiday let, however please note the following;</p> <p>Starveall Barn is a prominent building</p> <p>The Parish Council comments from the previous application PK11/1960/F remains with this application please see below;</p> <ol style="list-style-type: none"> 1. They are disappointed that he could not get the commercial use for the barn and the application is now for residential. 2. There is not a high enough quality design to enhance the existing building. 3. They have concerns regarding the materials of the roof, they object to the corrugated fibre cement roofing sheets. 4. No windows on the rear extension therefore lack of natural light. 			
Planning Decisions			
PK11/2548/F	St Agnes High Street Hawkesbury Upton	Erection of single storey rear extension to form utility room.	Decision- PERMIT with conditions
PK11/2381/TCA	Sunnyside Back Street Hawkesbury Upton	Removal of 1 no. Silver Birch Tree in the Hawkesbury Conservation Area	The Council does not propose to serve a Tree Preservation Order at this time. The Council has No Objection to the works as specified in the submitted details

**The Parish Council would like to wish everyone a
"Happy New Year"**

Fly Posting

Advertising on telegraph poles have increased in the Village at times 3 posters can be seen underneath one another. A polite reminder to anyone advertising a local event, please can you ensure the advert is removed after the event. Many Thanks

Empathy Clinic

To book a session or for further information contact Vicky Peirce:

v.pierce@googlemail.com

www.cometolife.org

Tel: 01454 238712

Fully confidential sessions.

ANTHONY HARCOURT

OSTEOPATH & ACUPUNCTURIST

No 3 Horse Street,
Chipping Sodbury
BS37 6DA

Tel: 01454 326256

Hawkesbury Parish Council (continued)

Thank you

The Parish Council would like to thank the Duke of Beaufort for donating the fantastic 27ft Christmas tree which was erected on the Plain prior to the Christmas switch on.

Also, thank you to everyone who made or donated Christmas decorations, mince pies and mulled wine, Will Ruthven and Elisabeth O'Brien for switching the lights, the Choir, the Parish Hall Lights, and both the Fox and Beaufort for their help; once again a very successful night.

Dates for your Diary

The next Parish Council meeting will be held on **Monday 9th January 2012** in the upstairs meeting room in the Village Hall at 7.30pm .

Contact details for Hawkesbury Parish Council via:

Hazel Jones
Parish Clerk
2 Fox Close
Hawkesbury Upton
GL9 1EQ
parishcouncil@hawkesburyupton.com



Would you like to make your area a better place to live, work and play?
Then why not get involved with your local Safer Stronger Community Group?
It works with the Council, Town Council, Police, Fire & Rescue and Health Authority to do just that.

You can:

- come along to a meeting
- go on-line at: <http://groups.southglos.gov.uk>.
- call your Safer Stronger Communities Officer on 01454 864625

**The next meeting for the Chipping Sodbury and the Cotswold Edge Group is:
Thursday 19th January 2012, 7.30pm
Chipping Sodbury Old School Rooms, High Street, Chipping Sodbury**

MADE TO MEASURE	 at home CURTAINS & BLINDS Charfield, Wotton-under-Edge	JOHN DAY ENGINEERING
CURTAINS & BLINDS		
CHOOSE IN THE COMFORT OF YOUR OWN HOME		All types of mowers serviced & repaired Free local collection & delivery
<i>Large Selection of Fabrics</i> Full range of blinds: Verticals, Venetians, Rollers, Velux Blinds Tracks & Poles – Customer's Own Fabric Make Up Measuring & Fitting		All fabrication & wrought iron work undertaken Gates, fencing, lighting etc.
Call Grant on: 01453 521751, 07799 822691 or Email: gb_at_home@yahoo.co.uk For a no obligation quote		Please tel: 01454 238365 or 07947 636308
<i>A local service with 20 years experience</i>		

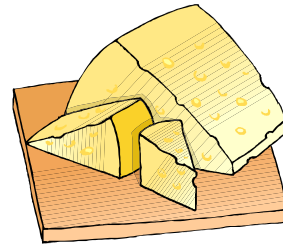
Festive Leftover Recipes

Cheeseboard macaroni bake

Serves 6

Ingredients:

400g/14oz macaroni
50g/2oz butter
50g/2oz flour
700ml/1¼ pts milk
1 tsp mustard powder
250g/9oz leftover cheese of your choice, grated or crumbled (plus a little extra)
50g/2oz breadcrumbs



Method:

1. Cook the macaroni.
2. To make the sauce, take a small pan, add the butter and melt,
3. Stir in the flour and cook for 1 min, stirring.
4. Pour in the milk, a little at a time, stirring constantly to avoid lumps, until all the milk is added. Bring to the boil, continuing to stir, to prevent lumps.
5. Cook for 2 minutes until thickened. Add the mustard powder, cheese and a grind of pepper.
6. Heat up the grill to high. Pour the pasta into the cheese sauce and mix well.
7. Transfer to an ovenproof dish and top with a little extra cheese and the breadcrumbs.
8. Grill for 2 – 3 mins until golden and bubbling.

Spiced parsnip and ham soup

Serves 4

Ingredients:

1 tblsp olive oil
1 tblsp mild curry powder
250g/9oz cold roast potatoes and parsnips
1 litre/1¼ pts chicken or turkey stock
100ml/4fl oz double cream, plus extra to drizzle
Handful of shredded ham



Method:

1. Heat the oil in a saucepan and fry the curry powder for 1 min until fragrant.
2. Stir in the veg, cover with three quarters of the stock and simmer for 5 – 10 mins.
3. Blend the soup until very smooth, with a hand blender or food processor, adding more stock if too thick.
4. Stir in the cream and ham, then return to the pan and reheat.
5. Season and serve with a drizzle of cream on top.



JOHN H WALKER

**GARDEN
SOLUTIONS**

LANDSCAPING & GARDEN MAINTENANCE
EST. 1999
TEL: 01454238865
MOBILE: 07974933398

Garden makeovers. Lawn cutting and
Maintenance, Turfing, Patios, Ponds,
Water features, Decking, Hedge Cutting
Fencing, All shrub work, Clearing,
Driveways, & Planting.
All aspects of garden work undertaken

**TAKING NEW BOOKINGS
FOR THE LAWN MOWING
2011 SEASON NOW.
CONTRACT BASIS OR ONE OFF.**

DOCTOR
DRIVE

school of motoring

FREE Theory Preparation

Block Booking Discounts

Competitive Rates

High Pass Rate

Start Learning at 16

Pass Plus = Cheap Insurance



For More Info Contact Chris

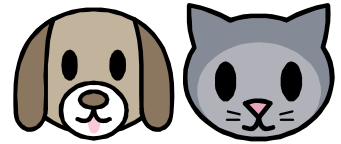
01454 238693

07970 274373

www.doctordrive.net



Babysitting, Dog Walking and Pet Sitting



Caroline Carnegie	60 Highfields 01454 238918	14yrs old. Available for dog walking and babysitting.
Catherine Carnegie	60 Highfields 01454 238918	18yrs old. Available for baby sitting and dog walking.
Charlotte Carnegie	60 Highfields 01454 238918	19yrs old. Available for baby sitting, dog walking and pet minding.
Ciaran Ainsworth	01454 238052	Raising money to take part in World Challenge, so anything considered: pet sitting, baby sitting, lawn mowing, car washing.
Ellie Roberts	01454 238628 07912 937312	I am 18 years old. Available for babysitting, day time child care (CRB checked) and dog walking.
Katie Munro	01454 238 174	I am a 15 year old experienced babysitter (references can be supplied). I am reliable and trustworthy and love working with young children. I am available mainly at weekends (term times) and at all times during the holidays.
Libby Musty	01454 238118	I am 15 years old. I am an experienced babysitter and pet-sitter and am available during weekends (in term time) and most days during the holidays.

**FREE FREE
FREE FREE**

2 badminton raquets

One Dunlop Blue Flash
One Jaguar Cresta
Old, but little used!

Please ring 238 279
or call at 9 Birgagge Road,
if interested.



Gill Morgan

Tongue Twisters

Six sharp smart sharks.

If Stu chews shoes, should Stu choose
the shoes he chews?

Rory the warrior and Roger the worrier
were wrongly reared in a rural brewery.

Wunwun was a racehorse, Tutu was one too.
Wunwun won one race, Tutu won one too.

Lesser leather never weathered wetter
weather better.



MIND & BODY MATTERS

PILATES Monday 7.30pm Didmarton Village Hall
Wednesday 7.15pm Westonbirt Leisure centre
CIRCUIT TRAINING Monday 8.30pm Didmarton Village Hall
LBT (legs,bums,tums) Wednesday 9.00am Didmarton Village Hall

For more information regarding classes Personal Training, Weight Management or Massage please email or give me a call.

TOGETHER WE CAN MAKE A DIFFERENCE

Contact Ruth Carnaby - 01454 238733

Email ruth@bodymatters1.co.uk www.mindandbodymatters.net

LA LUNA AROMATHERAPY ... A holistic and natural approach to wellbeing

AROMATHERAPY & CLINICAL AROMATOLOGY

Natural therapeutic treatments, individually created, to treat chronic and acute conditions, restore wellbeing and vitality, regenerate the essential energies that strengthen and optimise our natural healing processes and immunity.

If you need a haven of tranquillity to de-stress from a busy, hectic, and demanding lifestyle, to regain vitality and enthusiasm for your wellbeing, or to understand how **Aromatic Medicine** can be naturally effective in the treatment of acute and long term debilitating health conditions, why not give me a call...

Mary Chancellor LDCA, MAAPA, DipBSA Tel. 0759 200 6440

E: mary@laluna-aromatherapy.com WWW.laluna-aromatherapy.com

January Sudoku

Neil Fozard

For the uninitiated:-

to solve the puzzle, each row, column and 3x3 box must contain each of the numbers 1 to 9.

EASY !!

NOT SO EASY !!

								4
				5	1		2	
3		1	6			7		
	4		8				3	
	5		4				1	
		2		1	6	8		
	1	3	2			4		
4		5		3	7			
	7					5		

	6		2			8		
		4			9	1	7	
	1	5				2		
2	4	7	8					
	8			5			1	
	9			2	1	6		
		8	4	9	7		3	
				8				

Answers to the December quizzes:-

'Easy'

7	2	4	6	9	8	1	5	3
5	8	6	7	3	1	9	4	2
9	3	1	5	2	4	8	6	7
6	9	5	1	8	2	3	7	4
2	4	8	3	6	7	5	9	1
3	1	7	4	5	9	2	8	6
4	5	3	8	1	6	7	2	9
8	7	2	9	4	3	6	1	5
1	6	9	2	7	5	4	3	8

'Not so Easy'

5	8	6	1	2	4	3	9	7
4	2	3	8	7	9	1	5	6
1	9	7	5	3	6	4	8	2
2	5	9	3	8	1	6	7	4
7	6	1	4	9	2	8	3	5
3	4	8	6	5	7	2	1	9
6	7	4	9	1	3	5	2	8
8	1	2	7	4	5	9	6	3
9	3	5	2	6	8	7	4	1



Industrial Racking Shelving

Second hand industrial shelving for sale
 2.1m high x 1.25m wide x 0.45m deep
 Adjustable shelves – 175kg per shelf
 Ideal for garage or workshop
 Only £40.00 per bay
 Call Andy Musty on 01454 238118
 Mobile: 07748 337568

Buying cartridges for your printer??

For the cheapest on the Web, try
www.cartridgeking.eu
 Postage free on orders over £10
 Once you have registered as a customer
 and placed your order,
 type 19281 in the Discount box
 to obtain another 75p off.

Coombe Farm Logs

in 1m3 bags (dumpy bags)
 Dry, seasoned hardwood logs
 Free delivery
 £50 per bag — 2 for £95
 Call Tom Cole
 Mobile: 07970911412
 Home: 01454 238 896



EAST & SONS

Established over 100 years

PLUMBING AND HEATING ENGINEERS
CORGI REGISTERED GAS INSTALLERS
MEMBER FEDERATION OF SMALL BUSINESSES

'ASHDENE', HIGH STREET, HAWKESBURY UPTON
 Tel/Fax: 01454 238353
 Mobiles: (07973) 359776 / 441692 / 503149

Hawkesbury Contact List

Group	Contact	Phone	Website	Email
1st Hawkesbury Upton Guides	Louise Roberts Jane Bleaken	238628 232993		louise.roberts622@btinternet.com
After School Club	Louisa Tooker or Kim Anderson	238629 or 07527224741		hawkesburyasc@hotmail.co.uk
Badminton Club	Roy Townsend	238397		roy.townsend3@btinternet.com
Bethesda Chapel	Mervyn Coates	01453 843771		
Brownies	Liz Howard	238417		lizhowardconsult@aol.com
Chipping Sodbury Police Station	PC Mike Hart (voicemail)	0845 4567000 0117 945 5942		michael.hart@avonandsomerset police.co.uk
County Councillor	Sue Hope	238673		sue.hope@southglos.gov.uk
Cricket Club	Martin Gardener	238526	www.hawkesburycricketclub.co.uk	martin.gardener@cemex.com
District Councillor	Sue Hope	238673		sue.hope@southglos.gov.uk
Evergreens	Mandy Clarke	01454 261436		
Friends of St Mary's	Pauline Setterfield	238307		pleensetterfield@hotmail.com
Gardening Club	Terry Truebody	238364	www.hawkesbury-gardening-club.org.uk	terry_truebody@bigfoot.com
Hall Booking Secretary	Lorraine Rutter	07770 691024	www.village-hall.org	bookings@village-hall.org
Village Calendar Booking Secretary	Terry Gardener	238331	www.hawkesburyupton.com	calendar@hawkesburyupton.com
Hawkesbury Horticultural Show	Keith Player (Chairman) Karen Hasted (Vice Chairman) Vicky Rispin (Secretary)	238463 0796 331 8585 238262 232910	www.hawkesburyshow.org	— karen.hasted@lineone.net vicky@the-hollies.co.uk
Hawkesbury Primary School	Louise Lewis (Head)	238629	www.hawkesburyschool.ik.org	hawkesburyuptonprimary.school@southglos.gov.uk
Hawkesbury PTA	Becki Spokes	238841 07503 097554	http://www.hawkesburyprimaryschoolpta.com	debbiehawkesbury@googlemail.com
Hawkesbury Stallions Football Club	Simon Warren	01454 238070 07800844935	www.hawkesburystallions.co.uk	simonwarren@talktalk.net
Hawkesbury Upton Recycling Group	Neil Bennett	07914 908211		peterandpatsherry@tiscali.co.uk
Hawkesbury Volunteer Transport	Trip Coordinators: <i>(to arrange transport to medical appts.)</i> General Enquiries:	0797 206 5665 0797 206 5496		alan_shewry@msn.com
Local History Society	Barrie Hope	238673		hope.poolfarm@btinternet.com
Methodist Church Schoolroom:	Mrs Moira Coates	238479		
Methodist Church:	Rev. Paul Edwards	312439		paul@revpaul.co.uk
Neighbourhood Watch	Chris Rispin	232910		chris@the-hollies.co.uk
Parish Council	Hazel Bleaken	299227		hazel.bleaken@gmail.com
Parish News	Vicky Rispin (copy/subs) Fiona Rowe (copy) Sarah-Jayne Ainsworth (ads)	232910	www.hawkesburyupton.com/parish_news.html	parishnewssubs@hawkesburyupton.com parishnews@hawkesburyupton.com parishnewsads@hawkesburyupton.com
Pre-School and Toddlers	Sarah Green	07989 484 774	www.hawkesburypreschool.org.uk	enquiries@hawkesburypreschool.org.uk
Rainbows	Louise Roberts	238628		louise.roberts622@btinternet.com
RAOB (Bufs)	Iain Rae (Treasurer) Peter Webb (Secretary)	238702 294916		iainrae@uwclub.net susan.peter@uwclub.net
Royal British Legion	Sam Allen	238417		howrdallen@aol.com
Senior Citizen's Fund	Sam Allen	238417		howrdallen@aol.com
St Mary's Church	Linda Fairney	01454 238 553		william@fairney.wanadoo.co.uk
Tennis Club	Howard Bradley		www.hawkesburytennis.org.uk	howardb@dexam.co.uk
Theatre Group	Jenny Harris	238411		harris@backst.freemove.co.uk
WI	Gill Truebody	238364	www.hawkesburyandhortonwi.org.uk	terry_truebody@bigfoot.com
Youth Group	Kath Harkness	238717		kathrynarkness@btinternet.com

We do our best to keep the contact list up-to-date. Any changes should be sent to parishnews@hawkesburyupton.com.