



# HAWKESBURY PARISH NEWS

December 2016 Issue

40p

## Power Outages—The Mystery Solved...?

Last month the power outages in the village seemed to be increasing in frequency. The emergence of a new contact number for Western Power Distribution - 105 - (as provided by the Parish Council last month) prompted an increase in calls and additional pressure on WPD to pursue the fault with greater urgency.

There has been great disruption caused to businesses and home-workers, along with householders whose appliances and gadgets have been dying left, right and centre. In the Post Office the disruption has been extensive, as it not only takes down the Post Office computer systems, but also all

connections to external banking and payment systems. It also damages equipment, such as electricity pay stations, for prepayment keys, not to mention the havoc it causes when the power goes down in the middle of a customer transaction.

The disruption seemed to be happening on an almost daily basis at one point last month, so the encouragement to call WPD increased in the volume of complaints. Despite the WPD helicopter going up several times and engineers driving around the village to try to find the fault, the problems continued.

Then came a breakthrough - an eagle-

eyed resident in Hawkesbury Grange spotted the fact that the cows in the neighbouring field were scratching up against an electricity pole that had come loose from the ground. This resulted in sparking and arcing of electricity, causing the field to be aglow. WPD shot down Sandpits Lane and hurriedly began to fence off the pole until a permanent solution could be found.

Since then, things seem to have calmed down and fortunately all the cattle survived the incident! However, there have been a couple of outages since, so until the cause of the fault is absolutely certain, please keep calling and logging any outages.

Thanks to the Parish Council for pursuing this in recent months and to all those who called and raised complaints. Fingers crossed that there will be a swift end to the disruption.

## New Editor for Hawkesbury Parish News – Could it be you?

After over six years of putting together the Parish News, I have decided to step aside, to give someone new the chance to step up to the role. I only ever turned up to a meeting back in 2010, when Gill Carey was leaving, to see if I could lend a hand...

The past few years have been really enjoyable and have provided an insight into so much that goes on in our small village, with so many contributing to organisations and events behind the scenes. Working full time, family commitments and numerous other responsibilities have meant that my time is more and more limited. It is a big commitment each month, but with good prior planning and

organisation, it is a very rewarding task. It is also an important source of information to so many in the parish. I hope that many of you will take some time to consider taking on the job and securing the future of the magazine for the forthcoming years. I will, of course, stay on for the next few issues, to maintain the continuity and assist the new editor in the transition period.

**Fiona Rowe**

If you are interested in taking on the role, please get in touch, for further information:

[parishnews@hawkesburyupton.com](mailto:parishnews@hawkesburyupton.com)  
[vicky@coombeview.com](mailto:vicky@coombeview.com)

## New Parish Council Website

The Parish Council has hurtled headlong into the 21st century by launching its brand new website.

Check it out and they are very keen to receive your feedback.

[hawkesbury-pc.gov.uk](http://hawkesbury-pc.gov.uk)

## Inside this issue:

Editorial	Page 2
Diary Dates	Page 3
Preschool & Toddlers	Page 4
Table Top Sale	Page 9
FOSM	Page 13
WI News	Page 14
Gardening Club	Page 16
School Christmas Fair	Pages 20
Hall News	Page 24
Councillor update	Page 26
Church services	Page 27-29
Parish Council News	Page 31-33

## Latest Scam Alert

At time of going to press, several village residents have received bogus phone calls claiming to be from Her Majesty's Customs & Revenue. Calls claimed that HMRC were threatening legal action against the recipient of the call (and potential prison) for unpaid tax. Avon & Somerset Police and Trading Standards are aware. If you are

concerned or in any doubt about calls claiming to be from HMRC, hang up. You can contact HMRC directly via [www.gov.uk](http://www.gov.uk), the number on genuine correspondence or from the phone book. Incidences can be reported to *Action Fraud* on 0300 123 2040 or [http://www.actionfraud.police.uk/report\\_fraud](http://www.actionfraud.police.uk/report_fraud). Please make others aware.

**PLEASE NOTE!!** Early deadline for the January issue is Mon 12th December.

## Editorial



**Fiona Writes...**

Welcome to the December issue of Hawkesbury Parish News. For the past few weeks, we have been surviving without a kitchen. You don't realise how much of the household centres around the kitchen until you don't have one and are living out of boxes, doing the washing up in the bathroom sink and endlessly carrying stuff up and down the stairs. It's amazing how much you can improvise, if you have to. Thankfully, we are now up-and-running with brilliant kitchen and ready for all the festive preparations. At least I will no longer need to work out how to cook a turkey

and all the trimmings using a microwave and a sandwich toaster in the corner of the living room!

As Christmas approaches, a new dilemma has emerged - how to find the best value edible treats to use as stockingfillers. *Chocolate Oranges* have now shrunk by 10% and become more like Chocolate Satsumas, *Toblerone* bars now look like bizarre chocolate toast racks with the triangles spaced out and even bags of *Maltesers* have diminished by 15%. A post-Brexit flurry of manufacturer justifications about rising costs have been issued with indignation. Looking on the bright side, I guess it will benefit the nation's waistlines over the

festive season, but *Cadbury Roses* are in danger of becoming *Petals* and *Quality Street* more of a Mediocre Cul De Sac. I expect to find a net of chocolate Euros in my Christmas stocking next...

Don't forget that the switch on of the **Christmas Tree lights & Lee's Lights** takes place on **Saturday 10th December** from 5:30pm. From there, we hurtle headlong towards Christmas. I wish you a happy and peaceful Christmas 2016 and I'll leave you with a Christmas cracker joke to share over the festive season.

What do posh reindeer hang on their Christmas trees? *Horn-aments!*  
Ho! Ho! Ho!

**A Merry Christmas & a very Happy New Year to you All! From Fiona, Jill, Pauline, Suzanne & Vicky**

## Parish News Team

Hawkesbury Parish News is edited, produced and distributed entirely by volunteers. Advertising and subscription revenue covers the cost of production only.

**Typesetting,** Fiona Rowe  
**Layout, Editorial:** [parishnews@hawkesburyupton.com](mailto:parishnews@hawkesburyupton.com)

**Treasurer & Subscriptions:** [vicky@coombeview.com](mailto:vicky@coombeview.com)

**Editorial Team:** Fiona Rowe  
Vicky Rispin

**Copy to:** Fiona Rowe, 24 Sandpits Lane  
Vicky Rispin, Coombe View,  
High Street (next to the Village Hall)  
[parishnews@hawkesburyupton.com](mailto:parishnews@hawkesburyupton.com)

**Advertising:** Jill Bendeaux  
[parishnewsads@hawkesburyupton.com](mailto:parishnewsads@hawkesburyupton.com)

**Distribution:** Pauline Dixon 01454 299236  
[pcdixon@waitrose.com](mailto:pcdixon@waitrose.com)  
Suzanne Flye

**Printed by:** Sprint Print,  
22 Station Road, Yate. 01454 852255

Electronic copy always gratefully received — please save files in Microsoft Word or Rich Text Format (rtf). Only digital photos sent by email can be accepted.

### Disclaimer

Any opinions expressed or implied within this publication are not necessarily those of the Editors. The Editors reserve the right to exclude any item whose authorship is not disclosed. No responsibility can or will be accepted for any opinion, comment or error of fact printed in this magazine. All advertising is included in good faith; its inclusion does not necessarily endorse the product or service.

## Useful Local Info

### Hawkesbury Stores

#### Opening Times

Mon - Sat - 7am - 6pm

Sunday - 8am-12:30pm

High St, Hawkesbury Upton. Tel: 238639

Email: [info@hawkesburystores.co.uk](mailto:info@hawkesburystores.co.uk)

[www.hawkesbury-stores.co.uk](http://www.hawkesbury-stores.co.uk)



### Hawkesbury Upton Post Office

#### Opening Times

Mon, Tues: 9am-1pm Wed: 9am-12pm

Thurs, Fri & Sat: 9am-1pm

Back Street, Hawkesbury Upton, GL9 1BB

Tel: 01454 238341 [www.hawkesburyuptonpostoffice.co.uk](http://www.hawkesburyuptonpostoffice.co.uk)



### Post Box Collection (outside The Fox)

Mon-Fri: 4:45pm / Sat: 10:30am

### France Lane Farm Shop

#### Opening Times

Saturday - 10am-4pm / Sunday - 10am-4pm

France Lane, Hawkesbury Upton. Tel: 07929 947149

### The Beaufort Arms

High Street, Hawkesbury Upton. Tel: 01454 238217

### Flavours of Italy at The Fox Inn

High Street, Hawkesbury Upton. Tel: 01454 238558

**Did you know that we have Websites for the Village and also for the Village Hall?**

**[www.hawkesburyupton.com](http://www.hawkesburyupton.com) and [www.village-hall.org](http://www.village-hall.org)**

You can use these websites to:

- Check the Hall & Village calendars
- Book the Hall online
- View the Hall & Parish Council minutes
- View past editions of this magazine
- Link to many other village organisations
- and much more.



# DATES FOR YOUR DIARY



## Next Parish Council Meeting

The next Parish Council meeting will be on **Mon 5th December 2016, 7.30pm** at the **Village Hall** (upstairs room).



## Mobile Library

*Times & Dates*



**5th & 19th December 2016**

Hawkesbury Village Hall	2.35 - 3.00
Hawkesbury War memorial	3.05 - 3.20
Hawkesbury Highfields	3.25 - 3.40

## SMALL, FRIENDLY YOGA CLASSES

with Joan Boulton

at the Methodist School Room, Back Street

*Thursdays 10-11.30am*

All ages and abilities. Just £6 a session

More details call 01454 238044

*Any profit is used to support the work of World vision charity.*



## Hawkesbury Volunteer Transport

**Please Note:** There will be no Hawkesbury Volunteer Transport service between **December 23rd** and **January 3rd**.

## Save the Date!

### HAWKESBURY'S ULTIMATE CHRISTMAS PARTY

**Sat December 3rd**

Hawkesbury Cricket Club and Hawkesbury Preschool are putting on a joint fundraiser in the evening at the Village Hall. There will be a theme, details will be advertised on Facebook and posters around the village. Everyone welcome! Save the date!



## Charity Soup Lunches

In the Methodist Hall, 1<sup>st</sup>, 8<sup>th</sup> and 15<sup>th</sup> December from 12.30 - 1.15pm

Please join us and bring your friends, and enjoy homemade soup, hot rolls and fresh fruit, while supporting 'Crisis at Christmas' *Hawkesbury's 3 churches*



## Christmas Lights Switch On —2016

Saturday 10<sup>th</sup> December 2016 at 5.30pm

Please deliver any donations of mince pies to the Parish Clerk at 2 Fox Close, Hawkesbury Upton Before 5pm on Saturday 10<sup>th</sup> December 2016



**5:30pm at The Plain**

**6:00pm Lee's Lights at the Village Hall**

**Please note:  
Two Rockets will be lit to celebrate Lee Lights**

## Evergreens

Tuesday 13th December

### Christmas Lunch at the Beaufort Arms

Meet at 12. Eat at 1pm

If you would like to come along and need a lift please give me a ring. Mandy 01454 261436



## Coffee Mornings

Coffee Mornings take place on Mondays from 10am - 11.30am.

At Peggy Woffenden's house

Tea, Coffee and a biscuit or two for 50p. All welcome.



## BUILDER'S RUBBLE, DEBRIS, GARDEN WASTE...

Any old junk cleared and hauled away I can do the job at less than it would cost to hire a skip... AND you don't have to load it!

Call **TOM COLE** on 01454 238896  
**MOBILE: 07970 911412**

## Hardwood Logs

Dry, seasoned hardwood, barn stored.

Sold in dumpy bags £60 per bag - 2 bags £110

Local free delivery

Call **Tom Cole**  
**Mobile: 07970911412**  
**Home: 01454 238 896**







# CHRISTMAS RAFFLE 2016!

**GET YOUR TICKETS NOW & SUPPORT OUR FABULOUS VILLAGE PRESCHOOL!**

*Many fabulous prizes, including....*

*Lady's Wood shooting instruction*

*Boden voucher*

*Luxury hampers*

*and*

*Four top price tickets to The Snowman concert in Cheltenham on the 23rd December*

*Raffle drawn on the evening of 16<sup>th</sup> December at The Beaufort Arms, Hawkesbury Upton.*

*Ticket cost: 50p. Available to purchase from The Beaufort Arms, Hawkesbury Shop, Hawkesbury Primary Xmas Fair on 10<sup>th</sup> December, Hawkesbury Toddlers (Mon 9.45-11.45) or directly from Sarah McCombe 07958 937 476 or any preschool parent!*

*In aid of Hawkesbury Preschool & Toddlers and Kindly supported by...*



**CHIM-CHEROO**  
PROFESSIONAL CHIMNEY SERVICES

- Woodburners, open fires, Agas etc
- Member of the Institute of Chimney Sweeps
- Fully insured
- CCTV inspections
- Blockages removed
- Safety certificates issued
- No mess

Hire a lucky sweep for your wedding!

Richard Stone  
07805 330 961  
chimcheroosweep@yahoo.co.uk  
24 Gloucester Street, Wotton-under-Edge, Gloucestershire, GL12 7DN

Charity shop items required for Mercy in Action who support ongoing work in The Philippines such as Orphanages, street children and house building for poor families.

Any donations can be dropped off at 14 Hunters Mead or tel Pam & Mike Bendry on 238773.  
Thank you.

### Vicki Hopes

It was with great sadness that we heard of the death of Vicki. She will be greatly missed by her many friends in the village, and by the various groups and organisations that she generously gave her time to, either collecting money on the door, selling raffle tickets, working in the post office or volunteering in the village shop. I was working with her in Hawkesbury Stores only a few months ago.....

Vicki was a great supporter of the Parish News and she gave up many hours to help collate and distribute the monthly editions, between 2002 and 2008. When Gill Carey and I took over from Gill Morgan in 2002, the Parish News was printed on our

own photocopier – which took many hours to complete, even longer when there was a paper jam – which was quite often! Each double sided page would then be put into piles of 400, on Gill's dining room table, and then a fantastic team of volunteers would begin to circle the table, taking a page at a time, in order, collating the magazine, and then finally stapling it together. Vicki was one of those wonderful volunteers who would circle that table between 60 and 100 times, depending on how many other volunteers could make it that evening. It was a slow and tedious task, taking several hours to complete, so we would pass the time by chatting and swapping stories.

Vicki would entertain us with tales of when she was teaching but she was much more likely to tell us about the antics and escapades of her beloved dogs.

We send our sincere condolences to John, and we will remember Vicki's contribution to the production of the Parish News and remain grateful for her company and friendship.

Vicky Rispin and the Parish News Team

Funeral service at St. Mary's Church, Hawkesbury, on Thursday 1st December at 11.30 am, followed by burial at Hawkesbury Cemetery. Family flowers only please.



### Young Hawks After School Club



We aim to provide quality childcare at an affordable price and to offer a place where children can play freely and interact socially in the care of trained staff

#### Welcome to Hawkesbury After School Club.

We are a charitable company, based within Hawkesbury CE VC Primary school and offer affordable childcare to the children of Hawkesbury and its surrounding area. We provide a safe, welcoming environment where children are able to interact socially and further their knowledge through play and their interests. We provide a wide range of resources and activities to support each child's individual interests and level of development. We offer planned activities, however children are encouraged to choose the direction of their play and are supported by staff in their choices.

**HOURS:** 2.30pm until 6pm. Monday to Thursday

**For further details please contact Louisa Tooker (Manager/Senior Playleader) on the contacts below during after school club hours. Otherwise contact the school office (during school hours) who will be happy help.**

**Tel: 07527 224741 email: [louisa.tooker@hawkesbury.org.uk](mailto:louisa.tooker@hawkesbury.org.uk)**

Registered with Ofsted number: EY429151 Registered Company number: 07217551 Registered Charity number: 1144048

\*\*\*\*\*  
\* **Found - Bonfire night** \*

Cash was found on Bonfire night on the High Street. If you lost some money that night, please let me know the amount and whereabouts you may have dropped it, and I will return it to you.

If it is not claimed by 20th December, I will pass it on to the Bonfire Committee to go towards next year's fabulous display.

Sara White - 238554

\*\*\*\*\*

If you require transport for a medical related appointment

Call the

**HVT co-ordinator**

On

**0797 206 5665**

This is an **answerphone** so please leave a message giving the following details in full.

**Your name Telephone number Destination required Day, Date and Time of your appointment**

**HAWKESBURY VOLUNTEER TRANSPORT GROUP**



**Hawkesbury Methodist Hall  
Sunday 4<sup>th</sup> December 2pm to 5pm**

Come along and make some Christmas Decorations, Gifts and Cards in aid of “mind” a charity that helps to promote better mental health and help those in need of support with mental health issues.

Interested? I’m still working out the details but a suggested donation of £10 to the charity plus there will also be refreshments and extra kits to buy on the day. I have created a facebook event to join or alternatively give me (Kim Anderson) a call on 238799 or email me on [kjanderson1@hotmail.co.uk](mailto:kjanderson1@hotmail.co.uk)

If you have any craft items around that you’ll never get around to using and would like to donate I would be very grateful for them. In particular I’m looking for; material, felt, embroidery silks, wool, wire coat hangers, ribbon and blank cards especially in Christmassy colours.

**‘A MONUMENT TO HAWKESBURY’**  
 Stories of a village remembered spanning one hundred years

**THE IDEAL CHRISTMAS GIFT**  
*available from Hawkesbury Stores and the Post Office*

**‘A Monument to Hawkesbury’ - £3.50**  
**‘A Monument to Hawkesbury –The Next Generation’ - £5**  
**and ‘A Monument to Hawkesbury - The Way We Were’ - £5**

Copies can be posted for a small extra charge.  
 Contact 01454 238411

*All proceeds to village organisations.*



**DEB'S CELEBRATION CAKES**  
 Individually designed cakes for weddings and special occasions

Workshops - have a go yourself and learn a new skill

Please contact me to find out more, discuss ideas or see my work

**DEB PIDSLEY 01453 834394**  
**07890292125**  
[www.debscelebrationcakes.com](http://www.debscelebrationcakes.com)

**FIREWOOD**  
 Dry seasoned hardwood logs, delivered cut and split to your requirements.

**We also sell kindling and coal.**

Lower Kilcott Farm  
 Call Steve Thompson  
 Home: 01454 232941  
 Mob: 07974 194012

**NE odd jobs**  
 A fully insured, professional and reliable service

- Garden maintenance
- Weeding, grass cutting
- Cleaning
- Painting

*... as well as all those other little jobs you just never seem to get around to.*

**Call: Nicola Evered**  
 07947 072780 or 01453 844124

## Mobile library



The Mobile Library service is still operating, under current proposals until October 2017 – see below an article for community newsletters. In the meantime future dates for your route are:

Hawkesbury	Village Hall	2.35 – 3.00
Hawkesbury	War memorial	3.05 – 3.20
Hawkesbury	Highfields	3.25 – 3.40

### Alternate Mondays 5 & 19 December

Following the successful consultation process in the Spring, the council has adopted a new preferred position with the aim to future-proof South Gloucestershire’s libraries for the long term and ensure that no library buildings should need to close. A new three month consultation is now running until January 2<sup>nd</sup> 2017 to hear what the public has to say about the new proposals and information is available online at [www.southglos.gov.uk/librarychanges](http://www.southglos.gov.uk/librarychanges) and in your local library and council offices.

The new preferred option is to reduce the library service savings target from

£650,000 to £500,000. This would mean a smaller reduction in staff hours required to meet that target. The council will consult with library users and non-users alike on how best to deploy staff among local libraries. It is proposed that the mobile library service be replaced with community centre based libraries across South Gloucestershire and run by volunteer groups. The Council would also fund the building costs of Chipping Sodbury Library with the service being delivered by volunteers. These plans would mean that no library building would have to close as a result of the savings.

The council has also agreed to continue to develop plans to use technology that would allow registered members to use

library facilities for 11 hours a-day, seven days a-week, between 8.30am and 7.30pm. This technological approach to delivering library services would build on existing self-service kiosks by providing access to library buildings for registered users out of staff hours, it would be a new approach for South Gloucestershire. The council wants to hear from existing library users as well as those who perhaps cannot currently use these facilities during current opening hours, about how they feel about this option.

After the new consultation process, a final decision on how to proceed will be made in the New Year. Changes in public-facing library services would not take place until October 2017.

MissDis.co Mobile Disco Hire  
[www.MissDis.co.uk](http://www.MissDis.co.uk)  
 Quality service and competitive rates  
 Raising funds for World Challenge  
 abbie@missdis.co.uk  
 01454 326155 | 07531 377077

To advertise your company or services in the Hawkesbury Parish News, email us at :  
[parishnewsads@hawkesburyupton.com](mailto:parishnewsads@hawkesburyupton.com)  
 and reach a wide local audience.



Hawkesbury Youth Clubs

# **TABLE-TOP SALE**

**Saturday 21<sup>st</sup> January  
10am-1pm  
in the village hall**

**Find a good home  
for those unwanted Christmas gifts  
and make some extra cash.  
Or just come along to snap up some bargains.**

**£10 a table  
BOOK EARLY!!**

**Light refreshments will be served**

**To book your table contact :  
Caroline Mockford 238478 or  
Becki Spokes 238841**

## **Gordon ‘Gordie’ Bezar**

Right at time of going to press, the very sad news reached us that Gordon Bezar had unexpectedly passed away on November 22nd. Gordie aka “Master” was such a lively village character and well-respected local plumber. He had probably tinkered with the pipework in most Hawkesbury houses over the years. He loved his skittles and often delighted in regaling post-match tales of youthful mischief and village stories from days gone by, whilst enjoying a snifter of whisky. Despite recent ill-health, Gordie had still been determined to turn up to represent the Old Foxes, The Cubs and the Beaufort Pingers skittles teams. Our sincere condolences go to Doreen, Ross and Ange, and all of the Bezar family. Our thoughts are with them at this sad time. He will be sorely missed by so many in the village.

## **LOST CAT**

Dark ginger, short-haired  
White bib, white socks on  
back legs, white front paws  
If seen or found  
please contact:  
Alison Barnett, Yarde,  
Back Street 01454 238320 or  
07791 331651



## **News from 1st Hawkesbury Upton Guides**

A big thank you to everyone who supported the Friends of Guiding jumble sale — £419.39 was raised.

Also, thank you to everyone who came along and supported the WW1 exhibition following the Remembrance Service. The amount raised is still to be confirmed, once the final counting has been carried out by the Legion.



## **Girlguiding Fundraiser**

**I did it!!!**

I would like to thank everyone who sponsored me; you helped me to raise over £300!

The climb up Scafell Pike took nearly three hours and, including our lunch break, the total time was five hours. It was very cold at the top, but the sky was clear and the view was beautiful. Despite the fact that it was an incredibly exhausting day, it was worth it!

I have now raised nearly £800; your support and donations have been a tremendous help and I am really grateful.

**Thank you!**

**Cerys Wareham**



### Hawkesbury Upton Post Office

Don't forget to check last posting dates for overseas parcels and cards. Posting early is better than worrying!

Check out our range of gifts and stocking fillers, Christmas cards, tags and wrapping paper. We also have an extensive range of children's books, toys and games. Come in for a browse!

**Dick Blundell**

**Wishing a Merry Christmas and a Happy New Year to all our customers!**

#### Last Recommended Posting Dates

International Standard (formerly Airmail) and all International Tracking and Signature Services

Sat 3 Dec	Africa, Middle East
Wed 7 Dec	Cyprus, Asia, Far East (including Japan), Eastern Europe (except Poland, Czech Republic and Slovakia)
Thur 8 Dec	Caribbean, Central & South America
Sat 10 Dec	Greece, Australia, New Zealand
Wed 14 Dec	Czech Republic, Germany, Italy, Poland
Thur 15 Dec	Canada, Finland, Sweden, USA
Fri 16 Dec	Austria, Denmark, Iceland, Netherlands, Norway, Portugal, Slovakia, Spain, Switzerland
Sat 17 Dec	Belgium, France, Ireland, Luxembourg

#### International Standard HM Forces Mail - British Forces Post Office® (BFPO)

Mon 28 Nov	Airmail to Operational BFPOs
Mon 12 Dec	Airmail to Static BFPOs

#### UK Services

Tue 20 Dec	2nd Class and Royal Mail Signed For®
Wed 21 Dec	1st Class and Royal Mail Signed For®
Thurs 22 Dec	Royal Mail Special Delivery Guaranteed®
Fri 23 Dec	Special Delivery Saturday Guaranteed

### Letters to Father Christmas

Once again this year, Father Christmas' special post box will be in Hawkesbury Upton Post Office from the beginning of December.

Letters are collected daily by the elves and each letter will receive a personal reply from Father Christmas.

Don't forget to include your name and address on your letter, as Father Christmas' magical sat nav does not get set up until just before Christmas Eve and the elves may struggle to deliver your reply.

Happy writing!



### Never far from Hawkesbury...

While we were away recently, staying overnight in the Forest of Dean, we visited Lydney Harbour, the site of the old docks. It was a great place to walk the dog along the Severn and an interesting place to watch the tides and spot the next swathe of weather approaching.

As we walked along, we saw several large boulders along the edge of the footpath, without really taking a great deal of notice. The second time we ventured out along the footpath for another outing for the dog, we actually stopped and investigated. Each boulder along the path was around 6ft tall and 4ft wide and had several large holes drilled right through them, and a metal plaque underneath each hole. Wanting to inspect them further, we got closer and to our surprise, I read out the inscription on the first one - "Hawkesbury Monument - Compass Bearing 145°".



These boulders were drilled specifically for you to look through, to help pinpoint distant landmarks on the horizon on the other side of the Severn. Hawkesbury Monument was, of course, not the only landmark identified, but how spooky that it was the first one we read - and it just proves you're never far from Hawkesbury!

**Fiona Rowe**

### M G COUNTRYSIDE DEVELOPMENT

Fencing, Tree Surgery, XC courses, Landscape Gardening, and Fire Wood

Miles Batten 07866486808  
 Giles Bleaken 07976562323  
 Website: www.m-g.org.uk  
 Email: miles@m-g.org.uk

Based at Upper Chalkley Farm, Horton  
 Other jobs available upon request

## R&B VEHICLE SERVICES

Est. 10 years

# 01454 238700

REPAIRS, SERVICING  
 DIAGNOSTICS, BATTERIES  
 TYRES, EXHAUSTS  
 FOR CAR, 4 X 4 & LIGHT VANS  
 FREE LOAN CARS AVAILABLE  
 YOU CAN NOW BOOK YOUR MOT  
 ONLINE AT  
[www.mottetbury.co.uk](http://www.mottetbury.co.uk)

BAY 4 KNOCKDOWN  
 1 MILE FROM WESTONBIRT ARBORETUM

COST EFFECTIVE MAINTENANCE AT A FRACTION OF DEALER PRICES  
 CALL RICHARD OR BEN FOR FRIENDLY, RELIABLE SERVICE

## WOT NO SPELL - CHECKER???

*From in the Chamber over the hall to beds  
to yare of blankets to yare of shoes thro  
Ryggs to boysters to yalons on bodswoods  
on cofor and the wooll with all other gimble*

In the 'old days', as Don would have said, Inventories of the 'Goods and Chattels' (and sometimes the Cattles, Debts & Credits) of persons dying without having made a will were taken and 'appraised' by friends or neighbours of the deceased. Sometimes an inventory was drawn up to complement a will and was

likewise produced at an ecclesiastical court (usually held at Gloucester, but sometimes Chipping Sodbury, Wotton under Edge or Wickwar) before probate could be granted and the deceased's affairs concluded. Not all inventories have survived but there seems to have been a larger number in the latter half of the 17th century. Handwritten, with varying degrees of skill, by the more educated of Hawkesbury's residents, spelling was erratic and, to us, amusing. Spelling certainly wasn't standardised then, but what did it matter? Most of the items were pretty recognisable when read out aloud.

See how many of the possessions in these local inventories of the 1670s-90s you can identify.

NB this is a far from comprehensive list!

**Puter, putar, peses of peauter, poulter, peuter** (although the correct spelling was frequently used)

**Cetel, cettell, kitil, kittle, cittle, citele** often made of **brasse, brase, brace, breass** as were some **potts** and **panns** (although not the **drying pann** which was probably made of **eiron**).

Still in the kitchen: **Scellets, scilet, scimer, skymer** where there might also have been **fower barils & on waishin tub**, not to mention a **cheess presse, beaken, bakon, fleeches of baeken and beiff**, and, in one household, **beare and sider**.

Many rooms would have had varying numbers of **chaiers, chayres, chaiers, or cheyers** and likewise a **cobourde, cuppard, cobort or coberd, syd bords, foormes, and joynt stooles** but one imagines that only the more affluent would have had a **cushinge** and **on dusion of tabell naptkins**.

The upper chambers were home to the **beeds, and bedes, bedd steeds, beedsteeds, beadsteads, bedstids** and the associated linen: **curtins, valiants, coverleds** etc all known by the term 'the appurtenances' (invariably spelt correctly!) **Peeldrawers** were the covers for **peelows**, a **bolstow case** the cover for a **boulster**. One room even had **one loocing glass**. In the **stabel** there might have been **horsbeasts** and a **hors hernes**; many households kept **piggs**, one a **hogg pigge** and one a **soue**. The crops of **whate, otes, peass** etc were valuable and even the '**lumbar**' items such as **pick asks and hathets** were worthy of assessment. There is often mention of **loomes**, some of the deceased being weavers, and other implements of trade such as **scalles, skelles, skalls and waites**. Almost every inventory began by listing the value of the deceased's **waring aperl**. So spare a thought for poor **Elizabeth Wimboll of Hillesley** whose **Wearing Apparrell** in 1692 was considered to be '**old & sorry**'!

Jill Martin

Hawkesbury Local History Society

## Bethesda Chapel

### Sunday 18<sup>th</sup> December

Come and join us at 10.30am to praise and give thanks to God!

Would you like to be part of the action?

We endeavour to bring the past, present and the future together and into our experience, because we believe God touches our lives for good to open our eyes to Him

### HARESWOOD JOINERY

Specialising in...

- Bespoke kitchens and interiors
- Freestanding furniture
- Wooden flooring



**Philip Barr**

Phone: 07717-467554 Email: hareswoodjoinery@yahoo.com

25 years experience

### Maths coaching and support

Are you struggling to help your children with their maths homework?



I can provide maths support and coaching for Year 7-11's. I am currently a Year 13 maths A'level student and can offer patient and effective support to help develop your child's confidence and understanding. £10 per hour  
Contact Jake Pember 01454 232997, 07858 379823

[jacobpember5@gmail.com](mailto:jacobpember5@gmail.com)

THE FRIENDS OF ST MARY'S INVITE YOU TO



A FESTIVAL OF  
**NINE LESSONS AND CAROLS**

SUNDAY 18<sup>TH</sup> DECEMBER 6.00PM  
 AT ST MARY'S HAWKESBURY

FOLLOWED BY MULLED WINE AND MINCE PIES

### Thank You

On behalf of the Musty family, we would like to express our heartfelt thanks to everyone who has supported us following the sudden and incredibly sad loss of Diane, our much loved Wife, Mother and Grandmother. We have been overwhelmed by your kind words, messages of sympathy and anecdotes which we have

found so comforting at this difficult time. We were also so humbled by how many of you were able to come along to the church for a final farewell to this amazing lady. Hawkesbury is truly a unique village which Diane loved and she made some enduring friendships; singing in the church choir, being part of the gardening club; and

supporting the Hawkesbury show with her amazing entries every year, to name but a few of the things she enjoyed being part of. So many people have told us they will miss her smile and cheery wave as she strides around the village or down to church, whatever the weather! Thank you, once again. From Andrew, Sara, Chris,

### BRACELET FOUND

After Di Musty's funeral at St Mary's Church, a bracelet was found on the road, by the gate to the parking field.

For more details, please ring 238657



WISHING EVERYONE IN HAWKESBURY UPTON,  
HAWKESBURY AND BEYOND  
A VERY HAPPY AND PEACEFUL CHRISTMAS

YOU ARE ALL CORDIALLY INVITED TO THE ANNUAL  
SERVICE OF NINE LESSONS AND CAROLS  
AT ST. MARY'S CHURCH  
ON SUNDAY 18<sup>TH</sup> DECEMBER AT 6PM  
FOLLOWED BY MULLED WINE AND MINCE PIES  
AT THE OLD VICARAGE

**News from the Friends of St. Mary's**

Firstly, the Chairman and Committee of the Friends of St. Mary's would like to thank everyone for their generous support over the year – especially to the Setterfields who have organised so many good fund-raising events, and most recently *Homage to the Fromage* on the 19th November. Thanks to Peter and Pauline, the village must now rank as fully expert in sherry, champagne and cheese! Equally important, though less exciting, perhaps, is the regular work so many of the Friends do around the church, plunging their hands down the drains

to clear them of grass cuttings, moss and soil, clearing and maintaining the paths, painting gates and making the churchyard presentable before weddings and funerals.

Sitting in the church on 11th November for the Festival of Remembrance, I was reminded yet again just how vital St Mary's is to the community, not just as a place for the regular Sunday services, but as a focus for many occasions that mean a lot to us all, be it Harvest Festival, Remembrance, or gathering together to welcome new babies, to support those getting married, and to bid farewell to those we have known and loved. Without the support of the Friends of St. Mary's,

the PCC would find the task of keeping the church open, in good repair, and available for prayer and worship, considerably harder, so we are immensely grateful to all those who support St. Mary's through the Friends.

2017 will see the start of essential stonework repairs outside and inside the church – we hope, without too much disruption, and more news of the programme will be available in January. Meanwhile, I am extending the daily walks from five to eight miles when time allows, ready for Walking for Wulfstan in May: boots on!

Lisa Overton, Secretary, FOSM.

**HEROES in the community - a chance to nominate yours**

The South Gloucestershire Council Chair's Community Awards recognise the valuable contributions made by unpaid volunteers to other's lives across the county.

You can now put forward the names of your "community hero", with nominations required to be in by Monday, January 16. The awards will take place in March. For the first time, this year, the awards will also accept group nominations, as well as individuals.

Suggestions for nominations include those who have contributed to community development, promoting equality, arts, sports, play, environment, working with older or young people, advice and advocacy or have simply been a good neighbour.

From charity fundraisers to local football club managers, sports

coaches and arts festival organisers, these awards have seen South Gloucestershire Council honour the dedication and commitment of hundreds of unsung heroes across the district.

The Lord Lieutenant of Gloucestershire, Dame Janet Trotter, who also attends the awards ceremony, selects one of the winners to receive a special Lord Lieutenant's Award.

"It is really important to recognise the dedication of the many volunteers that give up their own time to bring our communities together and improve the lives of local people," said Cllr Williams.

To nominate a community hero, call 01454 863073,

visit [www.southglos.gov.uk/communityawards](http://www.southglos.gov.uk/communityawards) or

email:

[communityawards@southglos.gov.uk](mailto:communityawards@southglos.gov.uk)

**Increased Prize Money at  
Badminton Horse Trials 2017**

In 2017 the winner of the Mitsubishi Motors Badminton Horse Trials will take home the record prize of £100,000 for the first time.

Forty years ago, in 1976, the top prize was £1,000.

There will be a 10% increase in the overall prize pot to nearly £360,000 with prize money going down to 20<sup>th</sup> place of the usual starting figure of 80 riders.

Event Director Hugh Thomas commented "It has long been our policy to regard owners and riders as the first call on such commercial success as the event has, and to keep the prize money well ahead of inflation. I am also especially proud of the fact that the connections of every horse that finishes takes away more than it cost them to enter".



At the Annual Meeting the President, Betty Salthouse said 2016 had been a particularly busy year and all our speakers had come up trumps! During the year we were able to support the Charity, Great Western Ambulance at a meeting which raised £173.25 and next year our Charity speaker will be from the Multiple Sclerosis Therapy Centre in Bristol. Also it was nice to include our Christmas tree decorated for the carol, Hark the Herald Angels Sing, in the St Mary's Tree Festival, which we will be taking part in again this year. Secretary Carol Blaken and Treasurer Gill

Truebody and all the committee were thanked for their unstinting support in making the year so successful. Also members such as Jenny Harris, who gave lifts to those in need. Pat Seabrook was thanked for all her hard work in arranging cinema visits and Book Club. And next year will also be a busy one when we host two Group Meetings and welcome members from the surrounding district.

The present committee were all re-elected for another year, but members were reminded that key posts would need filling then, when members retire from committee, some having served up to 15 years! Also it would be nice to reflect a wider age range and include

younger members with fresh ideas.

Competition Flower of the Month was won by Judy Chancellor with a Kaffir Lily.

#### **Diary Dates**

**6th December** Poetry, Prose, Pud and Music Evening

Competition Christmas Floral Arrangement

**14th December** Christmas Dinner at The Crosshands Hotel

**3<sup>rd</sup> January** – Beetle Drive

Visitors are always welcome at our meetings on the first Tuesday of the month, 7.30pm in the Village Hall.

**Betty Salthouse 01454 238410**

### What is The Senior Citizen's Fund?

For those new to the Village and surrounding areas - The Senior Citizen's Fund is an account that is in place to benefit all those who have been resident for at least 1 year and are in receipt of a State Pension in the villages of Hawkesbury, Hawkesbury Upton and The Commons. At present everyone receives the sum of £10. The Fund is administered by The Royal British Legion, assisted by the WI. We need your help to ensure that no one is missed out. It is difficult to know

when people reach pension age (state pension), especially when the age can differ from year to year, and of course you all look so young. Please let us know when you or someone else reaches that age.

Over the past year fundraising in the community has raised over £1,800 from the following: St Mary's PCC, The RAOB (Buffs), Rugby and Football competition proceeds from Mick Bendeaux, Garden Party hosted by Mary and Tim Davies, Summer Skittles, the Harvest Auction at

The Beaufort and one Donation.

In December 2015, a total of 197 senior citizens received £10.

The fund still remains healthy in the short-term, but each year we will continue to need fundraising events and donations to enable us to continue with this great Hawkesbury Upton tradition.

Ms Sam Allen, Hawkesbury Upton Sub-Branch The Royal British Legion.

Tel: 238417 email.

[howrdallen@aol.com](mailto:howrdallen@aol.com)

## **Burns night at the Beaufort**

Friday January 27<sup>th</sup>

Celebrating the '2 Robbies'  
Burns and Stevenson

3 course Haggis special

Long John Silver Trust fundraiser

Details on [www.beaufortarms.com](http://www.beaufortarms.com)

## Summer Skittles 2016

### Final note

The singles competition this year was won by Steve "Speedy" Allen of the Winkers and the Rats Pack won the doubles courtesy of Tom Salt & Les Trinder

It was decided to donate £300 to the Evergreens and £300 to the Senior Citizen Christmas Fund.

Thanks were given to Mark and his staff for the provision of the alley and food

Next season is due to start the week after Easter

## **MARK POWELL**

DOUBLE GLAZING INSTALLATIONS & REPAIRS  
WINDOWS - DOORS - CONSERVATORIES  
SASH WINDOW REPLACEMENT SPECIALIST  
MISTED UNITS, HANDLES & LOCKS REPLACED

LOCAL TRADESMAN

CALL MARK ON  
01454 326804

MOBILE 07860 805197

## **JOHN DAY ENGINEERING**



All types of mowers serviced & repaired  
Free local collection & delivery

All fabrication & wrought iron work undertaken  
Gates, fencing, lighting etc.

**Please tel: 01454 238365 or 07947 636308**

HAWKESBURY CRICKET CLUB & PRE-SCHOOL PRESENT THE ULTIMATE

# XMAS PARTY

SAT DEC 3RD @ 7PM  
HAWKESBURY VILLAGE HALL  
TICKETS £10  
LIVE BAND - 'INTERLIGHT', DISCO,  
GAMES & DRINKS  
DRESS UP AS YOUR FAVOURITE  
XMAS CHARACTER.....

## THE CHRISTMAS LENTIL

I'm just a Christmas lentil  
The alternative to meat  
A pulse that keeps on giving  
Not fancy, but discreet

I come in many colours  
From all around the world  
I'm choc-a-bloc with protein  
A natural superfood

I can be stewed with tofu  
Or in a dhal with rice  
Quinoa's my new favourite  
With just a hint of spice

Now some of you like poultry  
And some of you red meat  
But why not change your  
lifestyle  
And try a veggie treat?

That poet Benjamin\* he say  
That turkeys wanna hip hop  
Why shouldn't they have fun  
too  
Don't diss dem man, just stop

Oh yes you're used to  
Christmas  
With roast beef, quail and  
goose  
But try a fatted lentil  
For your amuse bouche

Nature's red in tooth and claw  
But you humans are not beasts  
So celebrate in style this year  
And enjoy a real bean feast.

*Jenny Harris*

\*Zephaniah



### Dolman's Chartered Accountants and Business Advisors

Beaufort Mews, 7 Horse Street  
Chipping Sodbury BS37 6DA

01454 649249

[phillipdolman@dolmans.co](mailto:phillipdolman@dolmans.co)  
[www.dolmans.co](http://www.dolmans.co)

### RUSSELL'S WINDOW CLEANING

Water fed pole system using pure water

Windows, Fascias, Soffits  
Conservatory Roofs

Gutters - cleaning & clearing

Tel: 01454 294 279 / 07812 401 129

Email: [rlawns@btinternet.com](mailto:rlawns@btinternet.com)

Please contact us for a free quote  
fully insured, member of BWCA

## CHRISTMAS COMES BUT ONCE A YEAR...

By Alan C. Porter

That's it, December has arrived and I'm salivating at the prospect of things to come, the seasonal delicacies, mince pies, pud and the exchange of brightly wrapped gifts, but first and foremost it's time to invade the loft, dislodge the spiders from their webs and retrieve the decorations for their yearly outing!

I like all that nonsense. I'm not satisfied until the ceiling has disappeared behind a covering of glittering balls, bells and dangly bits. The tree flashes and sparkles groaning under the weight of lights and baubles and chocolate ornaments that the grandchildren have an uncanny knack of finding in record time, prompting the merry cry of, "Ho, ho, the little scallywags!" or something akin to that!

No matter how old we get or how old we refuse to get,

we all like the festive season with its bombardment of cards depicting robins in the snow, Santa and his reindeer or the snowman with his carrot nose.

The more serious side of Christmas may seem lost under the weight of triviality but it's still there, musically alive in the form of carols that can enhance the festive surroundings, if you can get past Wizzard, Noddy Holder or Cliff Richard or for those who remember, Bing Crosby!

Anyway, cracker pulling time is here, the turkey awaits carving daft hats are ready to be worn and a glass raised in a merry libation or two after which out come the home movies of last year's holiday.

No falling asleep now!

**MERRY CHRISTMAS TO YOU ALL!**



TROWEL & ERROR

## HAWKESBURY GARDENING CLUB

[www.hawkesbury-gardening-club.org.uk](http://www.hawkesbury-gardening-club.org.uk)

Meetings are held at 8pm on the 4th Monday of the month in the Methodist Hall in Back Street.

There has been a bit of a furore recently about the sighting of an Asian hornet near Tetbury. Apparently a pumpkin-sized hornets nest was found up a 55ft conifer tree. I enquired how one could identify the creature – What do they look like? How big are they? Do they wear turbans? No help has been forthcoming. If you happen to see one when you are next in Tetbury please take a photo of it and send it to me.

Our speaker for October was Arthur Ball who gave a very interesting talk entitled Birds, Tigers and the Taj during which he described the sights and sounds of his journey through northern India whilst on a bird watching trip. The highlight of the trip was an encounter in the jungle with a tigress and her 2 cubs that just ambled, unconcerned though wary, past his group. If this happens to you, should you be in Tetbury running away from an Asian hornet, please

take a photo and send it to me.

Gardens are pretty dormant at this time of year and most speakers are taking a rest, so we meet in December for our Christmas Social. This year it is in The Beaufort Arms on Monday 19th December from 7.30pm.

Our next full meeting will be on Monday 27th February 2017 when Roger Umpelby will talk about A Plant Lovers View of Fiji and Samoa.

You do not need to be a gardener to attend our meetings and there are advantages to becoming a member, such as discounted seeds and coach trips. If you are not a member and would like to hear a speaker that takes your fancy then come along as a guest for just £3.00.

For further information contact Terry Truebody on 01454 238364

### The Fleece Inn, Hillesley

A thriving, friendly local pub, under community ownership – a Free House offering local real ales



Open from midday, 7 days a week



Good quality food at sensible prices available lunchtimes and evenings. Parking, Beer garden &, play area.

The whole team would love to welcome you to The Fleece

[www.thefleeceinnhillesley.com](http://www.thefleeceinnhillesley.com)

01453 520003



### The Drain Man

Blocked drains and pipes?

**The Drain Man can get you flowing again. We unblock, maintain and clean all drains**

**Carry out CCTV surveys to identify problems & damaged pipes**

**We also offer a dig up and repair service**

For a fast, friendly and reliable service call Aaron on

**07947 806112/01453 511312**



## FESTIVAL OF REMEMBRANCE

Very many thanks to all who took part in Hawkesbury's Festival of Remembrance on the 11th of the 11th. It was a very moving occasion, I found tears welling up several times. The delivery of 'The inquisitive Child' by Natasha was a case in point.

Revd. JonSing Lee expressed thanks on behalf of the Korean people then proceeded to raise the roof by singing the Korean National Anthem. Stirring stuff, as was Revd. Alveen's singing of the New Zealand Anthem.

Representatives of the Guide and Brownie troupe sang 'Taps'. The Children from the school choir sang 'Let there be Peace on Earth'. Their little

faces were a joy to behold. They had worked so hard to learn the words. The children then carried forward crosses in memory of those on the War Memorial as Simon Bendry gave those names real significance by explaining what had befallen those so very young men. Copies of his book 'Hawkesbury at War' are in the shop and post office and it makes fascinating reading.

It is invidious to single people out I know because without every one of the people who took part it would not have been the lovely evening that it was. My thanks to you all

**Linda Fairney**



## 2016 Poppy Appeal

With Remembrance Sunday being so late this year, we have not been able to count all the money collected in time for inclusion in December's magazine. The final totals will be in the January magazine.

The one amount we have counted is that from the Remembrance Day service at St Mary's. £266 was donated to the Poppy Appeal by those who attended what was a very moving service of poetry, readings and music. Thank you.

### Hawkesbury Bonfire Night- many thanks to all!

So much effort put into the Hawkesbury Express- a full colour, puffin' and a tootin' train. Almost too good to burn- almost! The excitement of people watching it burn was fabulous, and we hope you think the fireworks were pretty brilliant too. We were SO lucky with the weather, with near perfect conditions. Cold crisp and clear- as it should be for Bonfire Night.

I hope you will agree that the bonfire, the fireworks and refreshment stalls



were outstanding this year. This can only be down to the tremendous hard work put in by so many.

We had people taking time out of their day to help in all sorts of ways. We simply can't do this without the amazing response from people pitching up, spotting a job, and just getting on with

### Wow what a night!

it. Hawkesbury at its best. So many of you- too many to mention by name, you know who you are, we salute you- and we simply can't put on his amazing display without you!!

We hope all of you who came along on the night- celebrated, ate, drank and generously donated had a good time too...

#### THANK YOU.

The Bonfire Team (If you have any thoughts or feedback- or would like to join the team next year... then do get in touch.

[deb@greenhillspotto.freemove.co.uk](mailto:deb@greenhillspotto.freemove.co.uk) ).

### Ride On Cycles

#### The Mobile Cycle Workshop That Comes to You

Full range of servicing & repairs carried out by a City & Guilds qualified mechanic, collection & return service also available.

Have your bike service now so it's ready for the good weather & avoid the last minute rush.



Contact Andy on:  
01454 880872 / 07443333219  
andy@ride-on-cycles.co.uk  
www.ride-on-cycles.co.uk

### What is the value of your property?

Sales, Lettings and Auctions  
independent professionals



**COUNTRY**  
PROPERTY

Tel: 01454 321339

# The Farm Shop at Hawkesbury

[www.ajmorganfarmproduce.com](http://www.ajmorganfarmproduce.com)

*Happy Christmas and a prosperous New Year  
to all our customers.*

**Visit us for Complimentary  
Mulled Wine & Mince Pies**

**Saturday & Sunday 3rd & 4th December**  
reserve or collect your

**NORDMANN FIR CHRISTMAS TREE**

*(free local delivery )*

place your

**CHRISTMAS ORDER**

download a price list from our website

*We can supply & deliver*

**Castlemead Free Range Bronze Turkey,  
Goose, Duck & Chicken**

*Home Produced Gammons, Hams, Bacon,  
Pork, Lamb, Aberdeen Angus Beef,*

*Sausages, Bacon, Pigs-in-Blankets, Gluten Free Sausages,  
Cooked Ox Tongue, Salt Beef, Ham, Hawkesbury Faggots,  
& Home Made Pies & Pate. Gift Hampers made to order.*

*Walkers Bakery bread, Organic milk, cream & yoghurt,  
farmhouse ice-cream, fresh vegetables, locally made cakes,  
scones, jams, chutneys & affordable gifts.*

**Normal Opening Hours: Sat. & Sun. 10am - 4pm**

**Including Christmas Eve & New Year's Eve**

**Also Open Friday 23rd December 10am - 4pm**

*Closed Christmas Day & New Year's Day*

## **Blueberry Nails**

Local mobile nail technician.

Covering Hawkesbury Upton and outlying villages.

Aromatherapy, Massage, Makeup/Bridal/nail & makeup parties coming soon for 2016.

Gift vouchers and 'My Blueberry' loyalty cards available.

Contact Hannah on 07583 392 272 to discuss individual nail needs.

[www.blueberrynails.net](http://www.blueberrynails.net)



To advertise your company  
or services in the  
Hawkesbury Parish News,  
email us at :

[parishnewsads@hawkesburyupton.com](mailto:parishnewsads@hawkesburyupton.com)

and reach a  
wide local audience.



The Hawkesbury Christmas Card is a tradition which allows you to send your Festive Greetings to everyone in the village without buying, writing and distributing a large number of cards AND you can support some very relevant charities too. It's simple - sign your name(s) on the cards provided in Hawkesbury Stores and the Post Office and put the money that you have saved into the charity boxes. This year's charities are -

## The Hawkesbury Christmas Card 2016 PLEASE NOTE DATES!

**McMillan Cancer Support** and **Syria crisis** via Save the Children.

The Christmas cards will be placed into Hawkesbury Stores and into the Post Office on **December 1<sup>st</sup>** this year, where they will be available for you to sign until **12<sup>th</sup> December**. After this date, the cards will be taken away and all names included in the Hawkesbury Christmas card centre page spread in the December issue of the Hawkesbury Parish News.

Please remember that this year, the signed Christmas cards will be taken from the shop and PO on the 12<sup>th</sup> December, and pass on this

information to any family or friends, who may not see the Parish News.

After the names on the cards have been typed up, the Christmas cards will be returned to the shop and Post Office where they will remain on display, for all to read, until after the Christmas festivities. If you miss the cut-off date, you will still be able to sign a card, and donate to the charities, but your name will not be included in the Parish News.

Look out for the cards – **only a few days to go before you can sign** – and please donate generously

*Mary Beresford*

## HAWKESBURY VOLUNTEER TRANSPORT GROUP

It is with great sadness that we have to report the loss of our friend and HVT volunteer, Vicki Hopes.

Vicki was one of the original team members that set up HVT back in 2007 and became Deputy Treasurer, and one of the original Coordinators. She brought great enthusiasm to all of the roles that she undertook, and will be greatly missed. Our thoughts are with John and his family at this sad time.

### HVT NEWS

On a more cheerful note, HVT are soon to receive a brand new vehicle to replace the current Comcar, which has provided

sterling service since 2008, having completed nearly 2500 trips and over 25000 miles. Further details will follow when available.

A big welcome to Jill Bendeaux, the latest volunteer to join the HVT team. She will join Brian, Dave and John as one of the Coordinator Team.

### PLEASE NOTE

HVT will suspend the passenger service from:-

Friday 23<sup>rd</sup> December, restarting on Tuesday the 3<sup>rd</sup> January.

The Coordinator telephone service

will be operating during this period for trips in January.

Don't forget, the number to make a booking is

**0797 206 5665.**

Leave a message giving your name, telephone number and the date, time and venue of your appointment. The Coordinator will get back to you when he or she is available.

A Merry Christmas to our passengers from the HVT Team.

Alan Shewry.

 **Hayley Jackson MCFHP MAFHP**  
**Foot Health Professional**

**A full range of Foot Health Treatments including:**

- Nail Cutting service
- In growing Toenails
- Corns and callus
- Heel Fissures (*Cracked Heels*)
- Nail conditions


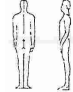
My clinic is based in Brimsham Park, Yate with parking right outside the door. Alternatively if getting to me is difficult, I come to Hawkesbury Upton on a regular basis to carry out home visits and would be happy to come to you.

If you would like any further information, to book an appointment or would like to discuss treatments, please give me a call.

Tel 01454 314460/07846452000  
[www.hjtherapies.co.uk](http://www.hjtherapies.co.uk) / Email: [hayley@hjtherapies.co.uk](mailto:hayley@hjtherapies.co.uk)

**Introductory offer - £10 off your first treatment**

**PAINLESS SPINAL TOUCH**  
POWERFUL • GENTLE • PROFOUND

FROM THIS  TO THIS 

STRESS & STRAIN  
EXHAUSTION  
MALFUNCTION

EASE & FLUIDITY  
JOYFULNESS  
VITALITY

Restores the natural equilibrium by re-aligning the body with its centre of gravity. Release from pain and an increased sense of well-being inevitable follow.

ANGELA ECKLES 01454 238 894 / 07947862 622  
30 years experience in natural therapies

# Hawkesbury School Christmas Fair



**Saturday 10<sup>th</sup> December**  
**Hawkesbury Village Hall**

**11am -1pm**

**Homemade Soup**

**Tea & Cakes**

**Craft Stalls**

**Santa's Grotto**

**Shopping Stalls**

**Everyone welcome to come along  
and shop, browse or have lunch!**

**Do you help run an organisation based in  
Hawkesbury, or that benefits the Hawkesbury  
community?**

Would you like to use the Show marquee & facilities  
on the evening of **Sunday 27<sup>th</sup> August** (*the day after  
Showday 2017*) for a fundraising event?

If so, then send in your proposal to Mel Thompson  
detailing why your organisation should be chosen and

how it benefits Hawkesbury.

Please email proposal or any queries to  
[stoner610@hotmail.com](mailto:stoner610@hotmail.com)

Proposals have to be received before the 24th of  
December 2016.

*Let's get  
fundraising!*

## HAWKESBURY UPTON LITERATURE FESTIVAL 2016

### A Date for your 2017 Diary

The **third annual Hawkesbury Upton Literature Festival** will take place on **Saturday 22<sup>nd</sup> April**. Running in several village venues, it will include a huge range of talks, readings, workshops and other entertainment for all the family, all day long. As always, all the Festival events will be **FREE** to attend, so that everyone can afford to join the fun. Come and enjoy the company of the **dozens of authors, illustrators and other guest speakers**. Many of them will be coming to Hawkesbury especially for the event, some

travelling a long distance at their own expense and giving their time free of charge for our benefit. Why? Because they love our village and the friendly, enthusiastic audience that we provide. I'm currently planning the programme and will publish the full details on the Festival website **www.hulitfest.com** at the start of January. If you'd like to join our mailing list and receive advance notice of all the events, please join the Festival mailing list via the form on the website. We will also be sharing news in the parish mag every month between now and then.

In the meantime, if you would like to be an official **Festival Volunteer** to help make the event run smoothly, please don't hesitate to contact me to discuss how you'd prefer to help, e.g. directing visitors, helping in the tearoom or serving in the bookshop. With the 2017 Festival set to be the biggest and best yet, all offers of help will be gratefully received! Here's to another great Hawkesbury Upton Literature Festival in 2017!

Debbie Young

Email

[debbiehawkesbury@googlemail.com](mailto:debbiehawkesbury@googlemail.com) Phone 01454 238401

### Increase in the price of the Parish News and annual subscriptions

The cost of the Parish News will increase from January 2017, from **40p** per issue to **50p** per issue – the price has remained the same for seven years and the change is to reflect the increased cost of production and printing. It actually costs more than 50p to print each magazine, so the price rise will help to increase our income over the year. As we have reported in previous editions, The Parish News has been able to donate some of this income to help a number of village groups over the past years, including Youth Group, HU5K fun run, the Literature Festival, sponsoring the Hawkesbury Show schedule and supporting the costs of Lee's Lights. These donations have had to be reduced this year as our expenditure was not being replaced by our income – which should be rectified by the price increase.

Annual subscriptions will therefore

increase, but as in previous years, those of you who pay in advance will receive a small discount and the subscription cost for the 12 months in 2017 will be **£5.00**, a saving of £1, so we could advertise this offer as "Buy 10 and get two free!"

If you wish to continue to receive this magazine through your door, please pay your £5 subs to your distributor when they call. It helps our great band of volunteers if all subs are paid by the end of January, please.

Alternatively, you can drop in cash or a cheque, payable to "Hawkesbury Parish News" to –

Vicky Rispin, "Coombe View", High Street, next to the village hall car park.

☺ Don't forget to include your name and address so we know who has paid!

Happy reading in 2017!

### Christmas & New Year Bin Collections — No Change

Mon 26/12/2016 — Cardboard bag, food bin, black bin, garden waste bin or sacks

Mon 02/01/2017 — Plastic bag, recycling box, paper, food bin

### Wedding

#### Congratulations!

Our congratulations go to  
*Thomas and Hannah*  
*Herod who were*  
*married on*  
*Thursday 6th*  
*October 2016.*



### It's a Girl!

Olivia May Fowler  
born 23rd October  
2016.



Congratulations to parents  
Tom Fowler and Tasha, and proud  
grandparents Ken and Carol Fowler,  
and the Fowler family.  
And, of course...welcome Olivia!

### Congratulations!

to Tom & Charlotte Bleaken  
on the safe delivery of  
Lucy Anne Bleaken  
on the 6th November.



### Wild Westonbirt

A youth Club with a difference!  
Saturday 17<sup>th</sup> December 10am –  
2pm at the coppice shelter, Silk  
Wood. For ages 14-18, a practical  
conservation project restoring some  
derelict woodland.

Booking essential.

Contact

[karen.price@forestry.gov.uk](mailto:karen.price@forestry.gov.uk) or ring



# Hawkesbury Stores

A COMMUNITY-OWNED BUSINESS

Merry Christmas and a Happy New Year to all our customers

## OPENING TIMES

Mon - Sat: 7am-6pm

Sunday: 8am-12.30pm

Please note the **NEW** Sunday opening time



## Everything you need for Christmas – right on your doorstep!



We hope you enjoyed the mulled wine, mince pies and a chance to see, and taste, many of our Christmas items at the recent Christmas Tasting Event. Hawkesbury Stores really does have everything you need for your Christmas table - turkey, gammon, duck, goose, pies and pasties, fruit and vegetables, great selection of cheeses, relishes, mince pies and puddings. The complete range is detailed in our fabulous order brochure (designed by Phil Burrows) which is available in-store NOW. Christmas orders will be taken (via the brochure, or e-form at [www.hawkesbury-stores.co.uk/christmas](http://www.hawkesbury-stores.co.uk/christmas)) until 12<sup>th</sup> December, to be collected on a date of your choice, up until Christmas Eve.

**Prize draw:** Customers will be entered into a draw for a hamper filled with Christmas goodies, when you spend £10 in a single transaction in the shop, until 17<sup>th</sup> December. The more you shop, the better your chances!

Full details of all our Christmas offers and how to order, can be found in the FREE brochure – pick up one today!

### Buy your party beer and wine from us at great prices!

In the shop, popular local ales by the bottle or order Party Time Beers - 5, 10 and 15 litre bag-in-boxes of selected ales from the Cotswold Spring & Severn Vale and Wickwar Breweries, priced between £1.37 and £1.90 per pint. *Remember to place your order before December 12<sup>th</sup>.*

See the varied selection of wines that are now available – red, white and rosé, as well as sparkling Prosecco and Pol Roger and Bollinger champagne! Also available – green ginger wine, sherry, mulled wine and gift boxes of port.

### Delicious fresh products every day:

Mondays and Thursdays (after 2pm): freshly made beef, lamb and chicken pies, pasties and scotch eggs from Artingstall's butchers.

Wednesday: fresh fish and seafood from John's Fresh Grimsby Fish van, outside the shop from 10.50 – 11.20am

Wednesday and Saturday: artisan bread from Hobbs bakery

Thursdays: chilled, fresh chickens

Fridays: new cheese varieties arrive from Leopard Dairy

Sunday: plain and chocolate croissants, freshly baked in-store

Every weekday: warm pies, cooked fresh in store



The Shop Christmas Tree makes a welcome return!!

Look out for the little Christmas tree above the shopfront this year.

Thank you to Tim Watts (07972 943800) at Hawkesbury Christmas Tree Sales, for the kind donation of a tree.

### Calling all Shop volunteers

During the Festive Season, there are likely to be fewer regular volunteers due to holidays, family visits, childcare etc. In order to keep the shop open as usual, **please** consider volunteering during this time. New volunteers will always be given training and NEVER left by themselves! A shortage of volunteers could mean reduced opening hours.

Our web site [www.hawkesbury-stores.co.uk](http://www.hawkesbury-stores.co.uk)

### Shop opening times over the Festive Season

Up to December 23<sup>rd</sup> opening times as usual

December 24<sup>th</sup> (Xmas Eve) 7am - 1pm

December 25<sup>th</sup> (Xmas Day) CLOSED

December 26<sup>th</sup> (Boxing Day) 9am - 11am

December 27<sup>th</sup> 9am - 11pm

Dec 28<sup>th</sup> - 31<sup>st</sup> (New Year's Eve) 7am - 6pm

January 1<sup>st</sup> 2017 (New Year's Day) CLOSED

January 2<sup>nd</sup> 9am - 11am

Any unavoidable changes to these hours will be advertised on our website, Facebook page or the shop door.



...punctuality, pride, courtesy, and quality all come as standard...

- Range and AGA specialist
- Ovens and hobs
- Extractor hoods
- Traditional stoves
- Microwave ovens



the UK's favourite oven cleaning specialists

LET US HELP  
call Clive Wallace on  
0800 140 9800  
07825 709 354

I look forward to hearing from you  
[www.oveni.co.uk](http://www.oveni.co.uk)  
Ovenu (South Cotswolds)

Chimney Sweep  
Steve Thompson  
07974 194012  
01454 232941



Member of the Institute of  
Chimney Sweeps.

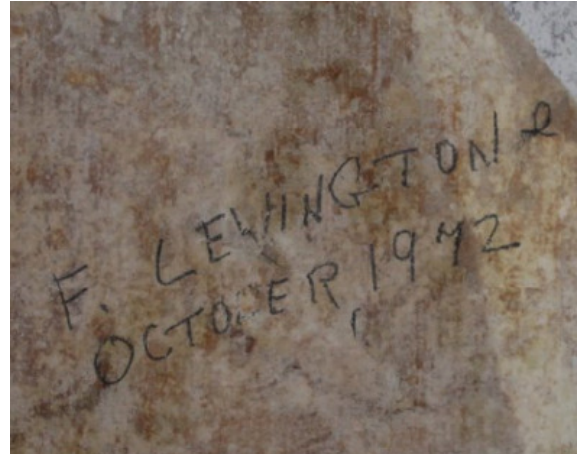
## Horton Court Project Update

Work has begun at Horton Court with the main contractors spending a week protecting the delicate floors, staircase and doors before the main building repairs and re-servicing begin. The decorator is now working hard stripping back layer after layer of wallpaper to reveal the lime plaster and distemper beneath. This will help the walls of the house to breathe as they were designed to and will stop the new paint from peeling off the walls. The reason why the decorations had failed so badly was that a modern paint had been put on

over distemper. Both of these materials behave in different ways in different conditions as they shrink and expand depending on the temperature. Under 4 layers of wallpaper we found a signature of F Lewington and a date of 1972 - does anyone know who this might be? The site office is now in the garages to the back of the house - we are looking for draft excluders if anyone has any spare to

run along the bottom of the doors.. brrrrr.'

**Colette Cuddihy (Project Manager)**



### Hawkesbury and Inglestone Commons Officer — December 2016

This autumn has been a good one for crab apples as well as fine displays of the vivid pink berries of spindle, seen on Inglestone Common from Chase Lane. This shrub is associated with limey soils and its hard wood used to be used for skewers, pegs ... and spindles! The distinctive fruits are good for wildlife but poisonous to us. The cattle were off of the Commons by late October and well before the start of winter rains. Once again we are grateful for them munching their way through grasses and herbs and this year they have added light trampling of the recently cleared loop around Lance Coppice to their conservation duties. This is the location of the reintroduced

Inglestone buttercups, which flowered prolifically over the summer and set seed before dying in autumn (as expected). The next generation will depend on the right amount of "wet and trample" next year. The Fresh Water Habitats Trusts have offered to train volunteers to identify and monitor the buttercups, as well as tassel stonewort and fairy shrimps. If you are interested in helping to look after the commons wildlife then please do let me know. Over autumn half term, the Conservation Volunteers brought youngsters from Kingswood for an enjoyable day starting to clear the brambles off Oxleaze Farm road. The brambles are spreading over areas of wildflowers including

devil's-bit scabious and are shading out ant tumps. They may also cover fallen timber and piles of stones which could be used by hibernating great crested newts. The plan is to let a contract over winter to carefully clear some of the remaining areas of bramble to restore grassland whilst leaving ant tumps and any newt refuges undisturbed.

Further scrub work is planned for this winter along Chase Lane. As before, this will protect grassland, improve visibility and as scrub regrows provide a range of different age scrub for the benefit of wildlife.

**Ann Harris, SGC Commons Officer.**  
01454 865614  
[Ann.Harris@southglos.gov.uk](mailto:Ann.Harris@southglos.gov.uk)

#### Burlington Design Group

Gillian Osborne  
\*\*\*

2 Horton Road, Horton, South Glos, BS37 6QH  
Tel - 01454 315313 Mob - 07931862069  
e-mail - [burlingtondesigngroup@talktalk.net](mailto:burlingtondesigngroup@talktalk.net)  
\*\*\*

A friendly service offering bespoke curtains, loose covers, upholstery and every type of blind.  
A wide range of fabrics available,  
Established over 20 yrs.


#### HOME COMPUTER PLAYING UP? NEED SOME HELP? DON'T DESPAIR!

For help with:

- Windows 98, Me, XP, Vista and 7 and 8
  - The Internet, Wireless Router Setup
  - Hardware Upgrades and Repairs
  - PCs Custom Built to order
- No problem too small or too large!

Contact: Lloyd Buckingham

Tel: 07940 155064  
or 01454 260504  
Email: [lb\\_cs@hotmail.com](mailto:lb_cs@hotmail.com)

**LB Computer Services**   
**YOUR LOCAL, LOW COST,  
HOME COMPUTER REPAIRER**

## Hawkesbury Hospital Hall – Information



Every month we will publish regular and one-off events at the Village Hall so you are aware of what is going on and we will give contact details so you can join in.

<b>Weekly events</b>		
Monday	Toddlers 9.45-11.45*	Sarah Choyce 07980 735 152 <a href="mailto:fihurst@outlook.com">fihurst@outlook.com</a>
Monday	Hawkesbury School of Dance 4:15 – 6:15*	Eve Brewer <a href="mailto:eve_brewer@yahoo.co.uk">eve_brewer@yahoo.co.uk</a>
Monday	Karate 6 – 8:30*	Maria Marfleet <a href="mailto:maria.sensei@btinternet.com">maria.sensei@btinternet.com</a>
Tuesday - Friday	Hawkesbury Preschool 8.45-12.30*	Louisa Tooker 07989 484774 <a href="http://www.hawkesburypreschool.org">www.hawkesburypreschool.org</a> <a href="mailto:enquiries@hawkesburypreschool.org.uk">enquiries@hawkesburypreschool.org.uk</a>
Tuesday	Youth Club 7 - 8:15* (except 1 <sup>st</sup> Tues in the month)	Mark Francom 01454 238720 <a href="mailto:markfrancom@gmail.com">markfrancom@gmail.com</a>
Wednesday	Private Badminton 8 - 9:30pm	Dave Hives 01454 238567 <a href="mailto:davidhives@yahoo.co.uk">davidhives@yahoo.co.uk</a>
Thursday	Karate 6:15 – 7:30*	Maria Marfleet <a href="mailto:maria.sensei@btinternet.com">maria.sensei@btinternet.com</a>
Thursday	Badminton Club 8 – 10	Roy Townsend <a href="mailto:roy.townsend3@btinternet.com">roy.townsend3@btinternet.com</a>
Thursday	Bufs 8 – 10	Peter Webb <a href="mailto:susan.peter@uwclub.net">susan.peter@uwclub.net</a>
Friday	History Club 8 – 10 (3 <sup>rd</sup> Friday in the month)	Barrie Hope 01454 238673 <a href="mailto:hope.poolfarm@btinternet.com">hope.poolfarm@btinternet.com</a>
Sunday	Karate 11 -12:30*	Maria Marfleet <a href="mailto:maria.sensei@btinternet.com">maria.sensei@btinternet.com</a>
<b>*School term time</b>		
<b>Dates for your Diary</b>		
03/12/16	HCC – Hawkesbury's Ultimate Xmas Party	Chris & Stephanie Gardener or Aimee Taylor or Tom Salt
10/12/16	PTA Christmas Fair	Jennie Young 01454 238002
<b>Latest News</b>		
<p>Christmas in the Hall lots of events going on mainly the local groups celebrating the time of the season so a Merry Christmas to you all and enjoy!</p> <p>We have quite a few projects in progress in the Hall, the re-decoration of the upstairs meeting room by the Youth Club is nearly complete and they are now choosing the floor covering and the new ceiling so that this room will have a nice modern feel for all users.</p> <p>We are getting quotes for replacement double glazed PVC windows that will be more energy efficient and easier to maintain, provided we can acquire some more grant funding.</p> <p>We need some new stage doors and we are also getting a quote for a new entrance porch as the height needs to be raised for some of our taller users.</p> <p>The tarmac to the car park is also in need of attention, so take care when walking through it. We had it patched a few years ago and we now need to join the patches. Unfortunately there are no grants available for maintenance like this and it's quite expensive to sort out. The voluntary payment box does not produce very much money so we have been unable to build up a sinking fund to cover replacement.</p> <p>So lots to keep us going in the New Year.</p>		
Visit our website - <a href="http://www.village-hall.org/">http://www.village-hall.org/</a>		

### MUTTERLY GORGEOUS DOG GROOMING

Personal, friendly service covering all aspects of Dog Grooming.



Contact Dawn: 07766 182926  
[mutterlygorgeous@outlook.com](mailto:mutterlygorgeous@outlook.com)

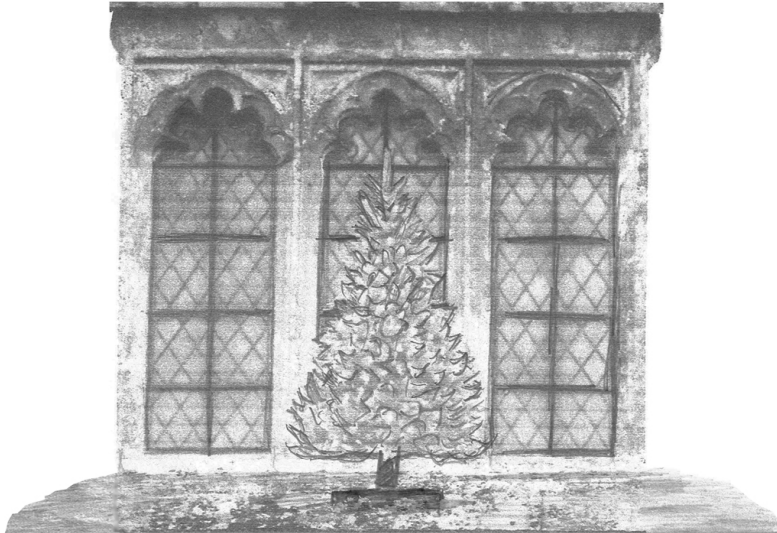
Pear Tree Cottage, Bushes Lane  
Horton. BS37 6QL

To advertise your company  
or services in the  
Hawkesbury Parish News,  
email us at :

[parishnewsads@hawkesburyupton.com](mailto:parishnewsads@hawkesburyupton.com)  
and reach a  
wide local audience.



## EXPERIENCE CHRISTMAS ST MARY'S CHURCH HAWKESBURY



**JOIN US ON CHRISTMAS EVE  
@ 4.30 TO RELIVE THE STORY  
OF THE BIRTH OF CHRIST  
THROUGH A CHRISTMAS TREE FESTIVAL  
CAROLS AND A LIVE NATIVITY**

**WITH EVERY BLESSING  
from  
ST MARY THE VIRGIN PCC**

### Dropping Anchor

As this year of tumultuous change draws to a close, I'm thankful to be living in our close-knit community. The continuity that village life provides is a welcome anchor when it feels like the rest of the world has gone mad.

Who could have guessed what political upheavals this ill-starred year would bring? Apparently a bet placed back in the spring on the dual triumph of Brexit and Trump would have yielded a small fortune. Even if I'd had the foresight to take that punt, winning would have brought little comfort.

The human losses we have felt this year are too numerous to name, from the celebrities to which Hawkesbury Theatrical Group paid tribute last month, to our own local treasures, taken far too soon.

In such troubled times, customs unchanged for generations can provide great comfort. Even though I'm not religious, I know that hearing the familiar Christmas carols around Hawkesbury this month will gladden my heart, whether sung on the Plain when we switch on the lights, at services in the church and chapels, or drifting through the night air in the early hours of Christmas Day.

However you choose to celebrate Christmas, may you find peace, love and joy – and, after the turmoil that was 2016, I wish you a thoroughly dull and uneventful 2017.

*Debbie Young*

[www.authordebbieyoung.com](http://www.authordebbieyoung.com)

### T. F. BLEAKEN CARPENTRY & BUILDING CONTRACTOR

FIRST & SECOND FIX CARPENTRY  
BESPOKE JOINERY  
TRADITIONALLY CUT ROOFS  
FITTED CABINETS  
BESPOKE KITCHENS & BATHROOMS  
RESTORATIONS & RENOVATIONS  
BUILDING EXTENSIONS & CONVERSIONS



IF YOU HAVE ANY QUESTIONS OR WOULD LIKE A QUOTATION FOR YOUR POTENTIAL CARPENTRY OR BUILDING PROJECTS, PLEASE DO NOT HESITATE TO CONTACT ME.

KIND REGARDS

**THOMAS FREDERICK BLEAKEN**

TELEPHONE: 07885838922 E-MAIL: [t.f.bleaken@hotmail.co.uk](mailto:t.f.bleaken@hotmail.co.uk)

### BonneFreshClean Carpet & Upholstery Cleaning Specialists

Call for a free,  
no obligation  
quote today!

Love the look and smell of clean and fresh carpets and upholstery?

Bonne Fresh Clean brings to you a professional carpet and upholstery service that will leave them sparkling and fresh.

- Thorough deep cleaning, no residues
- Child and pet friendly treatments
- All-female team ensures special attention to detail and superb results
- Fully qualified and insured



Bonne Fresh - Relax and enjoy beautifully clean and fresh carpets and upholstery!

T: 01454 436001 M: 07774 908410  
W: [www.bonnefreshclean.co.uk](http://www.bonnefreshclean.co.uk)  
44 Townsend Lane, Almondsbury, Bristol, BS32 4EQ

## Cllr Sue Hope – report from South Gloucestershire Council

### Changes Ahead

After great debate – changes are ahead - the decision was made to go forward with a **West of England Combined Mayoral Authority**. This new authority will comprise of the three leaders of Bath & NE Somerset, Bristol City Council and South Gloucestershire Council, together with a new Mayor who will be elected in spring 2017. They will take over the decisions for Planning and Transportation together with Adult Education and the possibility of keeping the Business Rate – this usually goes to central government. The new authority will receive £900m over 30 years to help with developing infrastructure etc.

Major Strategic Plans are now out for consultation – the **Local Strategic Plan & the Joint Transport Plan**.

Large areas of growth are proposed in the Yate /Sodbury & Thornbury area; a garden village of 3000 houses at Buckover; 1000 Charfield and further large development at Coalpit Heath. There was very short notice given for the dates for the drop-ins which are only being held in the areas marked for growth. The devil is in the detail and you will have to search very hard to find the detail in the on-line consultation. It appears areas around Old Sodbury are included in these

plans. This is on the top of the possibility of permission being granted for a large housing estate on the edge of Wickwar, which is not included in the plan.

Sorry, but here is the rather long link which provides all the areas proposed for growth – you would hardly think they want people to respond to this!

[https://www.jointplanningwofe.org.uk/gf2.ti/-/756738/23264517.1/PDF/-/Towards the Emerging Spatial Strategy Assessment of Strategic Development Locations Beyond Settlement Boundaries Location Dashboards.pdf](https://www.jointplanningwofe.org.uk/gf2.ti/-/756738/23264517.1/PDF/-/Towards%20the%20Emerging%20Spatial%20Strategy%20Assessment%20of%20Strategic%20Development%20Locations%20Beyond%20Settlement%20Boundaries%20Location%20Dashboards.pdf)

Trying to find your way round the documentation is difficult there are two documents being consulted on. The new link road to the M4 is mentioned – the Council have agreed funding for a feasibility study on this new motorway link which will be completed by September 2018.

The Council have also agreed to move to the Cabinet/Executive style of governance away from the current inclusive committee structure. Details are to be worked up by the ruling Conservatives to be agreed in February 2017.

On top of all that the Council have started to consult on next year's Budget – there are already large overspends on children & Young

People's budget and Adult Social Care.

The **Sustainable Transformation Plan (STP)** the future plan for our Health services has not yet been published in full – the priorities have been trailed - you may have read about this in the press – undoubtedly cuts to services will be involved, but as yet these have not been shared!

At the January Health Scrutiny Meeting I have asked for details of the service at **Yate Minor Injury Unit** – we are receiving reports of people being turned away for treatment – if you have any experience – please get in touch.

Any group or body looking for grant support please access the new **Member Awarded Funding** link on [www.southglos.gov.uk](http://www.southglos.gov.uk) please speak to me first –details below. I will not be making any grants before January 2017.

It is hoped the 20mph around the village will be introduced before Christmas.

May I take the opportunity to wish everyone a Happy Christmas and please if you think I can help at all – please get in touch.

**Cllr Sue Hope**

[sue.hope@southglos.gov.uk](mailto:sue.hope@southglos.gov.uk)

01454 238673

07860 239600

Please note that there is an **earlier deadline** for the January Issue of Hawkesbury Parish News – **Monday 12th December**.

This is because the magazine needs to be printed before the printer shuts down for Christmas & New Year. Thanks for your understanding.

- Physiotherapy
- Homeopathy
- Podiatry
- Chiropractic
- Aromatherapy
- Reflexology
- Acupuncture
- Holistic Massage
- Sports massage
- Nutritional Advice
- Pilates Exercise Classes

### TOLL HOUSE CLINIC

Freephone 0800 0936 362 Telephone 01454 32 22 32  
[www.tollhouseclinic.co.uk](http://www.tollhouseclinic.co.uk)  
 47 Horse Street, Chipping Sodbury, BS37 6DA



PLUMBING  
AND HEATING

**BOILER  
SERVICE &  
SYSTEM  
MAINTENANCE**

### FOR OIL BOILER AND AGA/RAYBURN SERVICE

Tel: 01666 504911 or 07867 434345  
or email:

[info@indplumbingandheating.co.uk](mailto:info@indplumbingandheating.co.uk)

OFTEC REG. NO: C4634  
Grant Boilers Accredited Installer  
[www.indplumbingandheating.co.uk](http://www.indplumbingandheating.co.uk)

## December 2016 Letter from the Vicar

Dear Friends,

Whilst the rest of the world was commenting upon the advent of the new President-elect of the United States, I was attending a course called 'Understanding Christianity', after 28 years in the ministry. About time!

Since becoming a school governor again after 14 years out of the loop, much has changed. The ways in which Church of England schools understand their own distinctiveness has sharpened and the response of the national church to the education of little minds has also crystallised.

The most important change is that ethos and religious affiliation used to be very much a background thing. Now it is in the foreground and values based upon Christianity are named. Things like compassion, hope, dignity, community, forgiveness etc. are spoken of, and taught. This in my opinion is brilliant. Faith is not just about belief, but about how we live our lives and what our values are.

In a recent stat. Religious Education came out as the worst taught subject, and teaching Christianity as the worst taught part of RE! Isn't that shocking?

So the national church has hit back with a fantastic course called 'Understanding Christianity', which actually teaches Christianity in a structured way.

Christians believe in Creation, Salvation, God, Jesus, the people of God and so forth. And soon children will know what we mean by those words.

We have a way to go, but we can all help, by bringing children to church to experience what our faith is and by talking with children about our beliefs and their implications on the way we live and the values we hold.

With my very best wishes,  
Richard Thomson, Vicar.

Please Contact me for arranging Christenings, Weddings, Blessings of marriage or Confirmation.

Email: [revrichardthomson@gmail.com](mailto:revrichardthomson@gmail.com) or Tel. 01454 219236

Benefice website: [www.badmintonchurch.org.uk/](http://www.badmintonchurch.org.uk/)

### Church Services in December 2016 For St. Mary's Church

Date	Time	Service	Readers	Readings	Sidesmen
04th Dec	0945 am	Morning praise/Holy communion	A Gray Clergy	Isaiah Ch. 11 v 1-10 Matt Ch. 3 v 1-12	Pe Setterfield
11th Dec	6pm	Evensong	Pe Setterfield	Isaiah Ch, 35 V. 1-10	M Bendry
			J Gardener	Matt. Ch. 11 v. 2/11	
18th Dec	6pm	Friends of St Mary's Lessons & Carols	TBA		Wardens
24th Dec	4. 30pm	Tree/Nativity service	TBA		Wardens
25th Dec	1030am	Christmas morning praise/ holy communion	TBA Clergy	Isaiah Ch9 v. 2/7 Luke Ch. 2 V. 1/14	Wardens
01st Jan 2017		NO SERVICE AT HAWKESBURY			
08th Jan 2017	TBA	FAREWELL SERVICE TO ALVEEN			

If you are unable to attend please telephone Linda Fairney: 01454 238553

Should you wish to speak to Rev Richard Thomson call 01454 219236 or Rev. Alveen Thoresen call: 01666 890 548

**Church Cleaners:**  
Lisa Overton

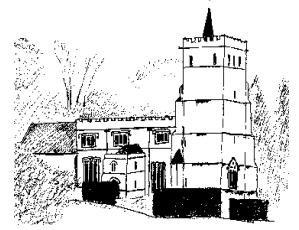
**Church Flowers:**

Please note all the different service times

## St Mary's Church News

Churchwardens Mrs Linda Fairney 238553 & Mrs Mary Davies 238657  
Keys for cleaners/flowers/church sitters please contact Mary Davies 238657  
if possible the day before to arrange for collection.

*"May God be gracious to us and bless us and make his face shine upon us, that your ways may be known on earth, your salvation among all nations."* Psalm 67 : 1-2



Our two special services in November were very well attended. Remembering our Loved Ones perhaps reflects the number of sad losses we have experienced in the past year, but gave us an opportunity to celebrate their lives. The Festival of Remembrance was a moving tribute to all who have died in war, expressed in music and readings, including a recollection of those from the village in particular – such familiar names

In a further sad celebration of her life, we mourn the loss of Diane Musty, an active member of the church congregation. She sang in the choir, was a member of the team leading worship on Sunday mornings, and was an active member of the Church Council. Her poems, especially for Good Friday, were thoughtful and moving. We shall miss seeing her walking down the hill to church and up again afterwards. We miss her for her cheerful love of life

You will have seen elsewhere a notice about the charity lunches, so this is just a reminder: they take place on 1, 8 and 15 December, at 12.30-1.15 pm, in the Methodist Hall. This year's chosen charity is Crisis at Christmas. The soup is excellent, so do come along!

The Light of the World service will be on Christmas Eve at 4.30 pm, taking the same form as last year, with the church starting in darkness, and gradually growing lighter as each tree is lit up after a carol or a reading. We will also be visiting the stable, as before, with Mary and Joseph and the Babe, and live animals looking on. Finally, on Christmas morning we shall be celebrating the birth of the Christ Child at 10.30 am

One last date, looking further ahead, is to say farewell to Revd Alveen Thoresen on 8 January, details to be confirmed

### Dates for your diary

**Thursdays 1, 8, 15 December** – 12.30-1.15 pm – Methodist Hall – Charity lunches

**Saturday 24 December** – 4.30 pm – St Mary's – Light of the World

**Sunday 25 December** – 10.30 am – St Mary's – Christmas morning service

*Jennifer Oldershaw*

### DECEMBER SERVICES IN BADMINTON BENEFICE

SUNDAYS	Dec 4th	Dec 11th	Dec 18th	Dec 24th	Dec 25th
Readings	2nd of Advent Isaiah 11.1-10 Matt 3.1-1	3rd of Advent Isaiah 35.1-10 Matthew 11.2-11	4th of Advent Isaiah 7.10-16 Matthew 1.16-end	Christmas eve Hebrews 1.1-4 John 1.1-14	Christmas Day Isaiah 9.2-7 Luke 2.1-14
Gt Badminton St Michael					11am Carols + HC Rev Thomson
Lt Badminton St Michael	8.30am BCP HC Canon C Mulholland	1115 Matins Rev R Thomson			
Sopworth St Mary			1115 BCP HC Rev R Thomson	6pm Carol Service Rev R Thomson	
Didmarton St Lawrence	1115 Matins Rev Thomson		6pm Carol service Rev R Thomson	1130 Midnight Mass Rev R Thomson	
Acton Turville St Mary		8.30 BCP HC Rev R Thomson	6pm Carol service Chris Andrew	4pm Christingle Service Rev R Thomson	
Boxwell St Mary					
Leighterton St Andrew	8.30am BCP HC Rev R Thomson	11.00 Mattins Alveen Thoresen	6pm Sat Carol serv Rev A Thoresen	1130 Midnight Mass Rev Alveen Thoresen	
Hawkesbury St Mary's	9.45 CW HC Rev A Thoresen	6pm Evensong Alveen Thoresen	6pm Friends Carol Rev A Thoresen	4.30 pm Light of the world M Beresford	1030 CW HC Rev Alveen Thoresen
Lasborough St Mary	9.30 Matins Chris Andrew	6pm Westonbirt Carols Rev C Carter	9.30am Matins Rev R Thomson	6pm Carol Service Rev Alveen Thoresen	9am CW HC Alveen Thoresen

# BETHESDA CHAPEL

PARK STREET, HAWKESBURY UPTON

## Services for the month of December 2016

Sunday 4th	10.30am	Mr Alan Tarling [C]
Sunday 11th	10.30am	Rev Ray Avent
Sunday 18th	10.30am	Rev Philip Hopes and Mr Richard Wood - SERVICE OF PRAISE
Sunday 25th	10.30am	Christmas Day Service with Rev. Philip Hopes



\*\*\*\*\*

Tuesday December 6<sup>th</sup> at 7.30pm: **A time of worship/prayer**

Tuesday 13<sup>th</sup> at 7.30pm: **Bible study/prayer**

TUESDAY 20<sup>th</sup> at 6.30pm CAROLS followed by light refreshments

**EVERYONE IS VERY WELCOME**



*Sunday 1<sup>st</sup> January 2017 10.30am Rev. Philip Hopes*



When Isiah prophesied the birth of Jesus, he called Him “The Prince of Peace” and when the angels announced His arrival to the shepherds, they predicted “Peace on Earth, good will toward men”. But when Jesus spoke for Himself, He said “Think not that I am come to send peace on Earth, but a sword” [Matthew 10 v.34]

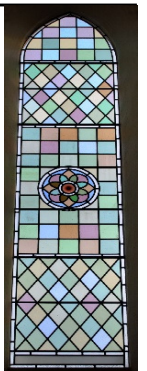
This seems a contradiction until we read John’s account: “He was in the world, and the world knew Him not. He came to His own, and His own received Him not” [John 1vs.10-11]. The world rejected the Prince of Peace but hundreds of individuals in the world accepted Him. These people knew the peace of God in their hearts, but because of their loyalty to Christ, they are divided, as by a sword, from unbelievers. The Bible promises the Second Coming of Christ and the establishment of His kingdom in the world and the reality of “Peace on Earth” Those who have trusted Christ have already experienced this in their personal lives.

M. C. Coates  
*Chapel Secretary*

## *Methodist Church News - December 2016*

### Services for December 2016

Sunday 4th December	10.30am	at Bethesda	
Sunday 11th December	10.00am	Rev. J Lee	<i>Holy Communion</i>
<b>Friday 16th December</b>	<b>7.00pm.</b>	<b>Carol Service</b>	
<i>An informal service, followed by tea/coffee and mince pies – all welcome</i>			
Sunday 18th December	<b>6pm.</b>	at St Mary’s	
Sunday 25th December	10.30am.	at St Mary’s	



### **Christmas Eve Carol Singing**

We will be carol singing around the village starting from **Farm Pool at midnight on Christmas Eve.** There will be a break for **hot drinks and mince pies in the schoolroom and we will finish at about 3.30am.** This is a tradition which has gone on for at least 130 years and is a lovely way to bring in Christmas morning. We would welcome any new carollers who want to join us.



### COMMUNITY LIBRARY

Next year there will be no more Mobile Library – the Council have said they will support 10 Community Libraries. We are looking at how this might happen in Hawkesbury Upton. Many people in the village currently use the Mobile Library - would you use a Community Library? There will be space for regularly changed books, however details

are still being worked on, but only if there is enough demand for the service – let us know if you would use this library service and all it might offer. If you are interested in either using or helping and want to see a Library service in the village - please get in touch  
 Hazel Jones 01454 238074  
 Sue Hope 01454 238673

### Under The Edge Arts

Under the Edge Arts (UTEA) is a volunteer-run community arts centre offering a wide range of arts classes, events and activities including regular live music performances. Tickets can be booked online, or by contacting us on 07791 323869. **Venue:** The Chipping Hall, Wotton-under-Edge GL12 7AD

**December Events:**

**Saturday 3rd December, 11am-4pm - CHRISTMAS CRAFT FAIR**

A wide variety of stalls offering a great way to shop for locally made gifts including Christmas decorations, jewellery and cards.

To book a stall please contact info@utea.org.uk or 07791 323869

**Saturday 3rd December, 8pm - THE MODEL FOLK**

The Model Folk are a six piece band, hailing from the deepest darkest reaches of North Somerset who play rumbustious Balkan inspired original folk. £9.50/£7.50

**Sunday 4th December, 2.30pm-4.30pm- Tea Dance**

Ballroom, Latin and Social Sequence dancing. Includes tea and cake. All welcome. £5/£4

**Saturday 10th December, 8pm- FESTIVUS: AMONG FRIENDS AGAIN : 8pm**

Expect a beautiful and original take on sacred carols and the Christmas story and just the right mix of contemporary material (including a bit of "Yuletide Yeehaw" from the Americana-loving band), as well as original songs. A heart-warming holiday show to tug at the heartstrings, get your toes tapping, make you smile and get you ready for the festive season! . £9/£7

**Sunday 11th December, 10am-12 noon- Christmas Wreath Workshop**

Get into the Christmas Spirit with Caroline Clements Flowers. Design and create your own luxury Christmas wreath full of seasonal foliage and other goodies, finished with luxury ribbon. All materials provided. £40 per person  
 Booking essential: louise-clements@btconnect.com.  
 Tel: 07769975436  
 www.carolineclementsflowers.com

**Friday 16th December, 7pm- CHRISTMAS AT UTEA**

A seasonal celebration with

performances by the groups and classes of UTEA.

Join UTEA for a drink and a mince pie, and maybe even some carol singing and get into the festive spirit whilst raising funds for Under the Edge Arts. £3 for adults, children free but a donation to UTEA funds would be welcomed.

**Saturday 17th December, 3pm and 7.30pm- The Hound of the Baskervilles**

Rain or Shine proudly present a new adaptation of Sir Arthur Conan Doyle's famous mystery The Hound of the Baskervilles. FOUR ACTORS. ONE MYSTERY. NO CLUE. Meet the world's most famous of detective, Sherlock Holmes, as he is called upon to solve the greatest mystery of all time...that of the Hound of the Baskervilles, for an unforgettable evening of mystery and suspense, transporting you from 221b Baker Street to the wilds of Dartmoor in search of who - or what dunnit !

**Christmas Cracker Jokes**

- ★ How many letters are in the Christmas alphabet?  
25. There's "no EL"!
- ★ What did the stamp say to the Christmas card?  
Stick with me and we'll go places!
- ★ Why is The Great British Bake-Off like the nativity?  
Because the Star is in the Yeast.



- ★ What do the royal family play at Christmas instead of musical chairs?  
Game Of Thrones.
- ★ How do you know if Santa's been in your garden shed?  
You've got three extra hoes



Made to Measure Curtains & Blinds

**Curtains and Blinds**

Choose in the comfort of your own home

Call Grant on  
 t: 01453 521751 m: 07799 822691  
 Charfield • Wotton-under-edge  
 A local service with 25 years experience

**Hawkesbury Village Hall**  
 Tues, Weds,  
 Thurs, Fri  
 8.45am-12.30pm

All children welcome from 2 years  
 Please contact us on 07989 484 774  
[enquiries@hawkesburypreschool.org.uk](mailto:enquiries@hawkesburypreschool.org.uk)  
 Charity number 1013170 Ofsted Registered 136003

## Hawkesbury Parish Council

### Planning Applications receive from South Gloucestershire Council

<b>PK16/5346/TCA</b>	The Cottage Back Street Hawkesbury Upton	Works to 1no liquid amber tree to crown lift by 2 metres and crown thin by 20%. Situated in Hawkesbury Upton Conservation Area.	<b>No objection</b>
----------------------	--	---	---------------------

### Planning Decisions received from South Gloucestershire Council

<b>PK16/4453/F</b>	Beechwood Tetbury Road Hawkesbury Upton	Erection of a single storey side extension to provide additional living accommodation. Conversion of existing garage to provide additional living accommodation. Erection of a detached garage	<b>Approve with conditions</b>
--------------------	---	--	--------------------------------

## Western Power Distribution Need your help

Since the last edition of the Parish News we continue to experience power cuts, albeit short very irritating. To reiterate; to help WPD monitor the number of incidents occurring they have asked Councillors to promote this telephone number to report all incidents;

# 105

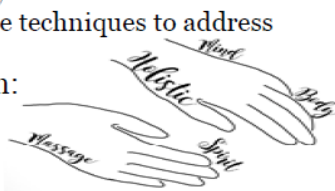
You may be asked for your address, and or postcode and telephone number. In addition if you experience electrical equipment that breakdown after one of these incidents; you may be able to claim from WPD. Please note each claim is carried out on an individual basis.



## Well done to Everyone involved in this year's Bonfire Night success



<p style="text-align: center;"><b>Vanessa Hull</b> <b>Holistic Massage &amp; Bodywork Therapist</b></p> <p><b>Do you experience?</b> Pain due to stiff/sore muscles, Stress/tension/ insomnia Do you need 'time out' from a busy lifestyle <b>If 'yes' then holistic massage is for you!</b> Holistic massage uses a range of massage techniques to address these symptoms and many more. For more information contact me on: 01454 238124 / 07974 161949 or <a href="mailto:vanessahull2@gmail.com">vanessahull2@gmail.com</a></p>	<p style="text-align: center;"><b>Nativity Crib Festival</b> St John's Church, Chipping Sodbury Wed 30th Nov to Sun 4th Dec - free entry. Public viewing: 10am-5pm Wednesday, 11.15am-5pm Thursday, 10am-7pm Friday, 10am-7.30pm Saturday, 11am-4.30pm Sunday Come to our Nativity Crib Festival and see over 150 Cribs from around the world, from many different cultures, and using a large variety of materials.</p>
---	--



## Hawkesbury Parish Council (continued) 2016 Christmas Light switch on



*This year's Christmas Light Switch on  
Will be held on Saturday 10<sup>th</sup> December 2016 at 5.30pm*

***Required - donation of mince pies***

Please deliver to the Parish Clerk at 2 Fox Close, Hawkesbury Upton  
Before 5pm on Saturday 10<sup>th</sup> December 2016

**Please note: Two Rockets will be lit to celebrate Lee's Lights**

---

## Newsflash!

Parish Council joins the 21<sup>st</sup> Century technology

With the launch of their Website

Please visit: [hawkesbury-pc.gov.uk](http://hawkesbury-pc.gov.uk)

We look forward to hearing your comments

---

## Library consultation

10<sup>th</sup> October 2016-2<sup>nd</sup> January 2017

South Gloucestershire Council welcome comments on the options outlined in this consultation for our library services and to understand better what the impact of any changes could be on service users, the provision of services and the wider community.

To support this consultation, the council is making available a wide range of information available:

Ways to have your say you can find out more or tell us your views by:

- Completing our consultation survey – available from the library or online
- Email: [consultation@southglos.gov.uk](mailto:consultation@southglos.gov.uk)
- Write to: FREEPOST RTCT-JXLE-EETT, South Gloucestershire Council, Corporate Research & Consultation Team, Library Consultation, Civic Centre, High Street, Kingswood, BRISTOL, BS15 9TR
- Phone: 01454 868154

*One of the options SGC is proposing - to cease providing the mobile library service but instead work to develop a network of community libraries, which would be managed and staffed by volunteers but using South Gloucestershire library service stock and IT systems.*

*Why not use the parish councils new website enquiry page and let us know if this is something you think Hawkesbury Parish would benefit from. A laptop will be required, venue, shelving, wifi and volunteers. We look forward to hearing from you.*



## Hawkesbury Parish Council (continued)

### Next Meeting

The next Parish Council meeting is being held on Monday 5th December 2016 in the upstairs meeting room of the Village Hall, High Street Hawkesbury Upton at 7.30pm.

### Contact details for Hawkesbury Parish Council via:

Hazel Jones  
 Parish Clerk  
 2 Fox Close, Hawkesbury Upton, GL9 1EQ  
 Tele: 01454 238074  
[hazeljones@hawkesbury-pc.gov.uk](mailto:hazeljones@hawkesbury-pc.gov.uk)



### The Fleece Inn, Hillesley

For Bookings Phone: 01453 520003. See our website for what's on and menus at [www.thefleeceinnhillesley.com](http://www.thefleeceinnhillesley.com)

10% Discount on Beers for card-carrying CAMRA Members

### Christmas at The Fleece:

	<b>Quiz Night</b> Sunday 4th December, 8pm - £2 per head	On the first Sunday of each month our popular quiz raises money for local charities. Teams of up to four people, but we will also make up scratch teams from anybody who turns up.
	<b>HRO Christmas Cracker</b> Sunday 11th December 4pm - Free	Live music from Hillesley's own swing band, the Hillesley Rooftop Orchestra, playing Christmas favourites
	<b>Acoustic Evening</b> Sunday 11th December 8pm - Free	On the second Sunday of each month why not come along and sing, play, recite - or just enjoy the entertainment? Keyboard available.
	<b>Coffee Morning</b> Wednesday 14th December 10:30-12:00 £3 for cake & a cuppa	Join us for a cuppa & cake, good company & charity raffle.
	<b>Vinyl PARTY Night!</b> Sunday 18th December 7:00pm - Free	Join us for one of the great Fleece fixtures - our Vinyl Party! Lights, twin decks and dancing - with you as DJ for up to 30 mins. Can you get us dancing?
	<b>Christmas Jumpers rule on Christmas Eve!</b>	We are open midday till midnight - dust off your woolly-pully with those Christmas themes
	<b>New Year's Eve party</b>	Come along and see in 2017 to the sounds of our disco - till 1am

Rod, Karen and the team  
 wish you a Merry Christmas and a Happy New Year

*Check website for opening times over Christmas*

### Used Postage Stamps at Christmas

Just a quick reminder that Christmas is the time when (with any luck) fewer franked and windowed envelopes arrive, but Christmas cards and parcels arriving instead! As ever, all used postage stamps will be very gratefully received to raise funds for the Hearing Dogs charity.

It's also an ideal job to keep small hands busy in the run up to Christmas!

Thank you!

*Fiona Rowe,  
 24 Sandpits Lane*

*(or drop them into the  
 Hawkesbury Upton Post Office.)*



### Westonbirt Arboretum Illuminated Trail

25th November -  
 18th December

An illuminated celebration of Westonbirt's wonderful trees.

The trail will be open every Friday, Saturday and Sunday evening from 5pm.

Pre booking is required  
[www.forestry.gov.uk/westonbirt-christmas](http://www.forestry.gov.uk/westonbirt-christmas)

## WAITING ANGELS LTD



Bookings now being taken for 2016/2017.....

The client diary is filling up with Bonfire Gatherings, Halloween Parties, Christmas Lunches and Parties, New Year and Hogmanay Get-togethers & Burns Night Suppers.

All events catered for. Prices are quoted on an individual bespoke basis just as each party is individual.

**Contact:-**

Hannah

[www.waitingangelsltd.com](http://www.waitingangelsltd.com)

07583 392 272



**Don't get let down  
by your oil supplier  
on delivery or price**

Call Sodbury Fuels on 01454 315050  
or visit [www.sodburyfuels.co.uk](http://www.sodburyfuels.co.uk)



### Didmarton Flicks in the Sticks

Friday 9th December 2016

#### Golden Years

Fate, the pensions crisis and a steadfast refusal to accept the injustice of old age have contrived to force law abiding, retired couple, Arthur and Martha Goode into a life of crime. Refusing to take the loss of their pensions lying down and to fade away into their declining years, our characters decide to fight back. They decide to take back what was theirs in the first place. They decide to start robbing banks

Doors open at 6.30pm with cash bar

Film show starts at 7.30pm

Tickets £3 in advance from [jennybody@btconnect.com](mailto:jennybody@btconnect.com) or 01454238358 Or £3.50 on the night

### Sherston Market dates for Christmas 2016

Saturdays

10 am to 2pm,

17th Dec

Stallholder enquiries can be made

by email to:

[info@awkwardsquad.co.uk](mailto:info@awkwardsquad.co.uk)

<http://www.sherstonmarket.co.uk/>

## Westward Travel

(John & Laura Simmons)

TEL: 01453 521999

**November:**

Sun 11th Christmas Lunch & Tour

Adult

Child

£28.00

**January:**

Mon 2nd Cinderella (13:00hrs performance)

£38.50

£30:00

Thurs 26th Chitty Chitty Bang Bang

£45.50

£42.00

**October 2017:**

Tues 24th War Horse

£61.00

£57.50

**Book at Hawkesbury Post Office or Westward Travel office in Wotton-under-Edge.**

WE WOULD LIKE TO WISH ALL OUR CUSTOMERS  
A HAPPY CHRISTMAS AND A HEALTHY NEW YEAR



**Garden makeovers. lawn cutting and Maintenance, Turfing, Patios, Ponds, Water features, Decking, Hedge Cutting Fencing, All shrub work, Clearing, Driveways, & Planting.**  
**All aspects of garden work undertaken**

**TAKING NEW BOOKINGS FOR THE LAWN MOWING 2016 SEASON NOW. CONTRACT BASIS OR ONE OFF.**

**JOHN H WALKER  
 GARDEN SOLUTIONS**

**LANDSCAPING & GARDEN MAINTENANCE  
 EST. 1999**

**TEL: 01454238865  
 MOBILE: 07974933398**

**Beautifully restored 18th century farmhouse, Hautefort, Dordogne France**

Available to let all year round. A very attractive and sympathetically restored former farmhouse. Sleeps 10/12 in 5 Ensuite bedrooms, generous living accommodation & private heated pool. Fully equipped to a high modern standard whilst retaining a wealth of original features. Set in the heart of the quiet hamlet of Lachaud surrounded by glorious open countryside but less than 10 minutes drive from local shops & restaurants. You'll be perfectly placed to explore this beautiful & historic area or just relax, unwind & indulge yourself!

Pets with responsible owners are most welcome!

For more pictures & further details visit:

<http://www.ownersdirect.co.uk/france/FR19942.htm>

Email: [bleaksandsal@hotmail.com](mailto:bleaksandsal@hotmail.com) or

Tel: 07510516050 or 01454 238316



**2 Men Went To Mow  
 Garden and Tree Service**

Local Friendly and Reliable

**Tree Surgery (NPTC Qualified)**

All Types of Tree Work undertaken

Contract Grass Cutting

All Aspects of Garden Maintenance

Planting Beds and Borders Maintained

Shrubs and Plants Supplied

Pruning and Hedge Trimming

Garden Rubbish Removal

References Available

Free Estimates — Fully Insured

Tel 07956 311901

07557 365661

Email [kev@2menwenttomow.co.uk](mailto:kev@2menwenttomow.co.uk)

**Westonbirt — 2017 Summer Concerts**

*(announced so far...)*

**Rick Astley**

Saturday 27 June :

Tickets cost £36.50 (plus £4.15 per ticket booking fee)

Tickets available online from the Forestry Commission

Box Office or call 03000 680400.



**NATURALLY BEAUTIFUL  
 FLORAL TRIBUTES**

ALL ENQUIRIES  
 07849 195 874

[WWW.WILDANDCOFLOWERS.COM](http://WWW.WILDANDCOFLOWERS.COM)

**Westonbirt Arboretum  
 Illuminated Trail**

*25th November - 18th December*

An illuminated celebration of Westonbirt's wonderful trees.

The trail will be open every Friday, Saturday and Sunday evening from 5pm.

Pre booking is required

[www.forestry.gov.uk/westonbirt-christmas](http://www.forestry.gov.uk/westonbirt-christmas)

**Festive Cheer!**

With the Holidays upon us I would like to share a personal experience with my friends about drinking and driving. As you may know, some of us have been known to have brushes with the authorities from time to time on the way home after a "social session" out with friends. Well two days ago I was out for an evening with friends and had several cocktails followed by some rather nice red wine. Feeling rather jolly, I still had the sense to know that I may be slightly over the limit. That's when I did something that I've never done before - I took a cab home.

Sure enough on the way home there was a police road block, but since it was a cab they waved me past. I arrived home safely without incident. This was a real surprise as I had never driven a cab before, I don't know where I got it and now that it's in my garage I don't know what to do with it...

**Mom in Hawkesbury starts new business.**

Handmade magical teepees, dens and canopies.

All can be bought with cushions and tiny fairy lights.

Lots of other magical items are also available: fairy wands, crowns, fairy doors and Christmas items.



[www.jftpbusinessfairy.com/nataliealdred](http://www.jftpbusinessfairy.com/nataliealdred)

[www.facebook.com/jftpnataliealdred](http://www.facebook.com/jftpnataliealdred)

01454 238575



**Paint pARTy**

Inspirational art parties in a warm & colourful space for adults & teenagers  
How it Works...

Choose your party / Get some friends together / Pick a date & time.

**Example Party 1—Starting out with Chalk Paint & Wax**

A great party to discover the versatility of the Annie Sloan, no prep Chalk Paint and wax, exploring decorative finishes, including colour mixing, stencilling, decoupage and gilding. Take away your sample board and feel inspired to make quick and easy transformations in your home or simply hang it as a piece of artwork. 10-4pm - £45

**Example Party 2—Shades of Crazy**

New lamps for old. Bling up your old lamp with chalk paint, stencils, vintage fabrics, trims and beads.

£25 - 3 hour shade only workshop (new shades can be purchased).

We provide all materials... an apron...

our undivided attention...coffee/tea and biscuits.

Just bring your lunch and plenty of enthusiasm! Maximum 5 places

Workshops in Horsley

Contact Polly Gegg-01453836664 / [polly@pollypuddle.com](mailto:polly@pollypuddle.com)

**CREATE AND LEARN**

**Textile Landscapes**

Use a variety of papers, textiles, paints and simple stitch; enjoy being guided through this interesting and revealing workshop and be inspired to create your own personal landscape .

No experience needed.

£35 - 10am-4pm All materials provided - coffee/tea and biscuits. Just bring your lunch & plenty of enthusiasm!

Other creative workshops available -lino printing,

3D containers and wall hangings

Workshops in Horsley -- Maximum 5 places or Hawkesbury Upton -

Maximum 3 places 10am-4pm - £35-Everything provided

Contact Patricia Bell - 01454-238887 / [patricia.c-bell@hotmail.co.uk](mailto:patricia.c-bell@hotmail.co.uk)



Your local heating oil supplier  
for Bristol and Gloucester

Competitive Heating Oil prices

Local & Reliable Service

Independent, family owned

Call Bristol 0117 957 5045

Call Gloucester 01452 899524

Order online [www.rix.co.uk](http://www.rix.co.uk)

Email [westcountry@rix.co.uk](mailto:westcountry@rix.co.uk)

**Walks with Gill**

Let me look after your furry friends  
when you can't.



**Diploma in Pet Sitting and Dog Walking**

**Police checked**

**Fully insured**

**20 years dog walking experience**

**Prices start from £5**

**Additional services:**

**Cats - I can visit and cater for holiday care**

**Other pets- if I can help, I will**

Phone: 07791676389

E-mail: [walkswithgill@gmail.com](mailto:walkswithgill@gmail.com)





Run for the community by the community

Wotton Electric Picture House  
18A Market Street, Wotton-Under-Edge, Glos, GL12 7AE  
01453 844601 - general enquiries (during opening hours)  
01453 844401 - 24 hour recorded message

Facebook - Electric Picture House Twitter - @WottonCinema

Information is correct at time of going to press.  
**Please call for the latest details.**

**The Light Between Oceans** Running time: 133 mins Cert 12A  
Friday, 25th Nov 19:30 Saturday, 26th Nov 19:30  
Monday, 28th Nov 20:15 Wednesday, 30th Nov 20:30  
Thursday, 1st December 14:00

**I, Daniel Blake** Running time: 100 mins Cert 15  
Winner of the Cannes 2016 top prize, the Palme d'Or.  
Tuesday, 29th Nov 16:30 Thursday, 1st Dec 19:30

**Fantastic Beasts and Where to Find Them 2D** Running time: 132 mins Cert 12A  
Friday, 2nd Dec 19:30 Saturday, 3rd Dec 14:00  
Sunday, 4th Dec 15:00 19:30 Monday, 5th Dec 20:15  
Wednesday, 7th Dec 20:30 Thursday, 8th Dec 14:00

**Fantastic Beasts and Where to Find Them 3D** Running time: 132 mins Cert 12A  
Saturday, 3rd Dec 19:30 Tuesday, 6th Dec 19:30

Thursday, 8th Dec 19:30

**A United Kingdom** Running time: 111 mins Cert 12A  
Friday, 9th Dec 19:30 Saturday, 10th Dec 19:30  
Sunday, 11th Dec 16:45 Monday, 12th Dec 20:15  
Tuesday, 13th Dec 19:30 Wednesday, 14th Dec 20:30  
Thursday, 15th Dec 14:00

**Trolls** Running time: 84 mins Cert U  
Saturday, 10th Dec 10:30

**Francofonia** Running time: 88 mins Cert 12A  
Sunday, 11th Dec 19:30

**NT Live: No Man's Land (Live)** Running time: 150 mins Cert 15  
Thursday, 15th Dec 19:00

**The Unknown Girl** Running time: 113 mins  
Sunday, 8th January 19:30

### Holiday home for rent in Jumilhac le Grand, Dordogne, France

La Maison au Coin is a well-equipped spacious country house with private pool and enclosed garden. Central village location close to all village amenities, historic château, deer park, the river Isle and beautiful countryside. Sleeps 8-10. Ideal for two families sharing or groups of adults.

There is plenty to do and something for everyone: canoeing, walking, fishing, trim trail through the woods, panning for gold, rock climbing, tennis, horse riding, cycling, 'acrobois', wakeboarding! A wide range of activities and amenities are available right on the door step and the local bar, restaurant and boulangerie are only 2 minutes' walk away! For more information, availability and prices please visit the website or our Facebook page: <http://www.ownersdirect.co.uk/accommodation/p8122872>, <https://www.facebook.com/lamaisonaucoin/info>, or phone Jane on 07790 888321.

### Christmas at Lower Woods

Mon, 19/12/2016 - 10:00am - 3:00pm

Come and spend the day making Xmas Gifts and Decorations from greenwood!  
Are you aged between 13-19? Join us for a free day of volunteering and making products from the green wood found at Lower Woods.

Made possible thanks to South Gloucestershire Council, Cory Environmental and Western Power.

Price / Donation: Free

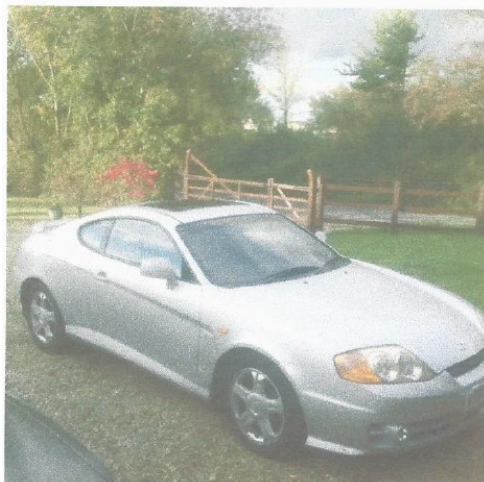
Gloucestershire Wildlife Trust

Lower Woods, Wickwar, Gloucestershire, GL9 1BY

Wheelchair users please contact organiser in advance

Contact details: Tel: 01452 383333

<http://www.gloucestershirewildlifetrust.co.uk/>



**2003 HYUNDAI COUPE SE 1995cc**  
**SILVER WITH BLACK LEATHER INTERIOR**  
**ONLY 2 PREVIOUS LADY OWNERS, THIS IS**  
**A LOCAL CAR AND HAS ONLY COVERED**  
**52,000 FROM NEW.**

**MOT TO END OF FEBRUARY 2017**

**INCLUDES:**

**All MOT certificates from new**

**All service history and receipts**

This car is linked to the International Security Register

=====

Petrol, Manual gearbox, Leather interior, Electric mirrors, Cruise control, Alarm, ABS, Front, Rear and Side airbags, Alloy wheels, Rear spoiler, Air conditioning, etc,etc.

Call Tricia to view and test drive.  
01454 294768 Mob: 07879 860993

**FOR SALE**

**£1995**

To advertise your company or services in the Hawkesbury Parish News, email us at :

[parishnewsads@hawkesburyupton.com](mailto:parishnewsads@hawkesburyupton.com)

and you'll soon reach a wide local audience.



## Babysitting, Dog Walking and Pet Sitting



Annice Anderson	01454 238799	I'm 14 years old and an experienced baby sitter from looking after my cousin. I can also help with English, Maths and Science homework for Year 9 and below.
Jack Anderson	01454 238799	My name is Jack Anderson and I am 15. I am good with young children and so I am available for babysitting on weekdays from 7 to 10.30 and am available for the weekend as well.
Ziggy Cole	01454 238896	I am 17 years old and fundraising for <i>KLB World Challenge 2017</i> to Mozambique. I am able to do babysitting, dog walking, pet sitting & feeding and any other jobs will be considered.
Rosie Houlbrook	01454 238844 07484244411	I am 19 yrs old living at home & studying animal behaviour & welfare at Hartpury. I am happy to child mind, dog walk, feed animals if you're on holiday etc.
Amber Langley	07473 357573	I'm 17 years old. I have experience with younger children as I have a 5 year old brother and also younger cousins as well. I've had previous experience with baby sitting. I also have experience with dogs; I have a husky.
Abbie Merritt	01454 326155 07531 377077	I am 17 years old and available to babysit most evenings and weekends. I am also able to offer a pet minding service - specialising in exotic pets. I am used to handling reptiles, amphibians, invertebrates, arachnids, and anything woolly, fluffy or hairy.
Katie Merritt	01454 326155 07875 098223	I am 15 years old and available to babysit most evenings and weekends. I can also look after pets, house sit or even do housework! I am reliable and trustworthy and come with my own transport (i.e. my dad) for late night pick-ups.
Jasna Nickells	01454 238 929 07572 599 688	I'm 18 years old and can work most weekends or weekday evenings. I have experience with looking after younger children because I have two younger sisters. I'm a responsible and kind teenager. I am studying A level English and fine art at the moment and am available for English tutoring or art lessons.
Ellie Parker	01454 238261 07496 078232	I am a reliable and responsible 17 year old who is available for babysitting or pet care / dog walking. I can also assist with horses including mucking out, turning out, bringing in etc. I am fundraising for the <i>KLB World Challenge 2017</i> expedition to Swaziland and Mozambique.
Jake Pember	01454 232997 07858 379823	Jake Pember (17) Available for babysitting, gardening, dog walking, feeding pets or any other jobs - just ask and I'll see if I can oblige.
Lauren White	01454 238 555	I am 17 yrs old, available for babysitting and dogwalking. I have a younger brother and sister, as well as dogs so am experienced with animals and children. I am available most evenings and weekends.
Sean White	01454 238 555	I am 15 years old. I'm available for babysitting, dog walking or pet minding and gardening tasks. If you have any questions about any menial jobs then phone me up and I'll see whether I'm able to meet your requirements.



*The Latin-inspired, easy-to-follow, calorie-burning, dance fitness-party™. Feel the music and let loose!!!*

**Monday 6.30 - 7.15 pm—The Club Room,  
Gloucester Street, Wotton**  
**Tuesday 6.30 - 7.15 pm—Horton & Little Sodbury  
Village Hall, Horton**  
**Thursday 6.30 – 7.15pm—Charfield Memorial Hall, Charfield**  
 For more details contact:-  
 Andrea on 07970125353 or [andrea.benson1@btinternet.com](mailto:andrea.benson1@btinternet.com)



**Ladies!!** Do you want to improve your posture, strength, mobility and stamina?

**Then Join a Fitness League Exercise Class!**

**Monday 7.30 - 8.45 pm—The Club Room,  
Gloucester Street, Wotton**  
**Wednesday 6.45 - 8.00 pm—Almondsbury Sport &  
Social Centre, Almondsbury**

For more details contact:-  
 Andrea on 07970125353 or [andrea.benson1@btinternet.com](mailto:andrea.benson1@btinternet.com)

## December Sudoku

Neil Fozard

For the uninitiated:-

to solve the puzzle, each row, column and 3x3 box must contain each of the numbers 1 to 9.

**EASY !!**

**NOT SO EASY !!**

			3	8				5
6		4			9		1	3
	3						2	
2			8				9	
	9						5	
	1				4			8
	6						4	
1	8		4			2		7
7				5	2			

			1	2	9			
		9	7		3	4		
		1				5		
3	6						9	2
	7						4	
9		5				7		6
8			9		5			4
	4		2		7		3	

Answers to the November quizzes:-

'Easy'

3	2	5	8	1	7	6	4	9
8	4	7	9	6	2	1	3	5
6	1	9	4	3	5	7	2	8
1	5	8	3	9	6	2	7	4
2	3	4	7	8	1	9	5	6
9	7	6	5	2	4	8	1	3
7	8	3	1	4	9	5	6	2
4	6	1	2	5	8	3	9	7
5	9	2	6	7	3	4	8	1

'Not so Easy'

6	8	4	2	7	5	3	9	1
1	9	5	8	3	6	4	7	2
7	2	3	1	4	9	5	6	8
8	6	7	9	5	2	1	3	4
9	4	2	3	1	7	6	8	5
5	3	1	4	6	8	7	2	9
2	7	6	5	9	4	8	1	3
4	1	8	6	2	3	9	5	7
3	5	9	7	8	1	2	4	6



**Looking for LEGAL ADVICE ?**

EXPERT LEGAL ADVICE

**FAMILY LAW  
EMPLOYMENT LAW  
CIVIL LITIGATION**

Appointments at a time and place convenient for you. Saturday morning & out of office hour appointments available.

## BEVAN EVMY SOLICITORS

YOUR LOCAL SOLICITORS

**FREE 30 MINUTE INITIAL APPOINTMENT**



[www.bevanevmy.co.uk](http://www.bevanevmy.co.uk)

Call Us Now  
0333 3208 600 (Standard Rate calls)

### Parish News Advertising Rates

In response to several requests, we are also providing a larger 1/4 page size

From July 2016 our prices are :

- 6x4 cm advert= £36 a year (£3/month)
- 9x4 cm advert = £48 a year (£4/month)
- 1/4 page = £72 a year (£6/month)

All sizes are approximate.

Contact [parishnews@hawkesburyupton.com](mailto:parishnews@hawkesburyupton.com) for further details

# Hawkesbury Contact List

Group	Contact	Phone	Website	Email
1st Hawkesbury Upton Guides	Louise Roberts Jane Bleaken	238628 232993		louise.roberts622@btinternet.com
After School Club	Louisa Tooker or Celia Rowlands	238629 or 232920		hawkesburyasc@hotmail.co.uk
Badminton Club	Roy Townsend	238397		roy.townsend3@btinternet.com
Bethesda Chapel	Mervyn Coates	01453 843771		
Brownies	Liz Howard	238417		lizhowardconsult@aol.com
Chipping Sodbury Police Station (Non-emergency: 101)	PC Daniel Jones: PCSO Rich Gay: PCSO Sian Rolling :	07919628618 0750006433 07825388927	www.avonandsomerset police.uk	daniel.jones@avonandsomerset police.uk
County Councillor	Sue Hope	238673		sue.hope@southglos.gov.uk
Cricket Club	Chris Gardener  Barry Wright	01454238387 07970910531 299034	http://hawkesburyupton. play-cricket.com/	chris.gardener@hotmail.com  barry.wright@cutlerytraders.com
District Councillor	Sue Hope	238673		sue.hope@southglos.gov.uk
Evergreens	Mandy Clarke	01454 261436		
Friends of St Mary's	Pauline Setterfield	238307		pleensetterfield@hotmail.com
Gardening Club	Terry Truebody	238364	www.hawkesbury-gardening- club.org.uk	terry@truebody.co.uk
Hall Booking / Village Calendar Secretary	Lorraine Rutter	07972 508621 01454 299761	www.village-hall.org www.hawkesburyupton.com	bookings@village-hall.org calendar@hawkesburyupton.com
Hawkesbury Horticultural Show	Keith Player (Chairman)  Vicky Rispin (Secretary)	238463 or 07746 571 533 232910	www.hawkesburyshow.org	keithjosieplayer@hotmail.co.uk  vicky@coombeview.com
Hawkesbury Primary School	Ed Riddington (Head Teacher)	238629	www.hawkesburyschool.ik.org	enquiries@hawkesbury.org.uk
Hawkesbury PTA	Hazel Jones	238074	http://www.hawkesbury primarieschoolpta.com	
Hawkesbury Upton Literature Festival	Debbie Young	238401	www.hulitfest.com	debbiehawkesbury@googlemail.com
Hawkesbury Volunteer Transport	Trip Coordinators: ( <i>arrange transport to medical appts.</i> ) General Enquiries Only:	0797 206 5665  238788		alan-shewry@msn.com
HU5K	Vicki Parker		www.hu5k.org	vicki.parker@ezek.com
Local History Society	Barrie Hope	238673	www.hawkesburylocalhistory society.co.uk	hope.poolfarm@btinternet.com
Methodist Church Schoolroom:	Mrs Moira Coates	238479		
Methodist Church:	Rev. Jong Sin Lee	01454 855488		coffeetime200@yahoo.co.kr
Neighbourhood Watch	Graham Chamberlain	01454 294520	www.ourwatch.org.uk	inglestone1@gmail.com
Parish Council	Clerk: Hazel Jones Chair: Bryan Robinson	238074		hazeljones@hawkesbury-pc.gov.uk
Parish News	Vicky Rispin (copy/subs) Fiona Rowe (copy) Jill Bendeaux (ads)	232910	www.hawkesburyupton.com/ parish_news.html	vicky@coombeview.com parishnews@hawkesburyupton.com parishnewsads@hawkesburyupton.com
Pre-School	Louisa Tooker	07989 484 774	www.hawkesbury preschool.org.uk	enquiries@hawkesburypreschool. org.uk
Rainbows	Ailsa Devon	01454 261091 07966230810		ailsa_devon@hotmail.com
RAOB (Buffs)	Iain Rae (Treasurer) Peter Webb (Secretary)	238702 294916		iainrae@uwclub.net susan.peter@uwclub.net
Royal British Legion	Sam Allen	238417		howrdallen@aol.com
Senior Citizen's Fund	Sam Allen	238417		howrdallen@aol.com
St Mary's Church	Linda Fairney	01454 238 553		william@fairney.wanadoo.co.uk
Tennis Club	Tricia Perris Barbara Stephens Elaine Weightman (coach)	294768 238569 07725 165181	http://hutennis.wixsite.com/ hutc	elaineweightman@btinternet.com
Theatre Group	Jenny Harris	238411		harris@backst.freemove.co.uk
Toddlers	Luciana May/Sophia Truebody	01454 238 172	https://www.facebook.com/ groups/670619976334853/	ludencker@gmail.com
WI	Gill Truebody	238364	www.hawkesburyand hortonwi.org.uk	gill@truebody.co.uk
Youth Group	Mark Frankcom	238695		markfrankcom@googlemail.com

We do our best to keep the contact list up-to-date. Any changes should be sent to [parishnews@hawkesburyupton.com](mailto:parishnews@hawkesburyupton.com).