



Hawkesbury Parish News

August 2014 Issue

40p

What Do They Do — the Friends of St Mary's?

I often wonder, how aware are villagers of the work of The Friends of St Mary's? The charity was set up over twenty years ago, with the objective of maintaining and improving the fabric of the church. All of our fundraising goes to this objective, and we are quite separate from the PCC which is responsible for the services, worship and fund-raising for the diocese.

Over the past few years our funds have been used to restore the organ, replace the large areas of carpet, replace the vents and snowboarding in the roof to prevent condensation and rotting, make donations to the Window Restoration Fund and to the church insurance. We have also helped to improve the drainage in the boiler room, screened off the oil tank and replaced the wall lights and chandeliers. On-going routine work is the renewal of the gravel on the paths, keeping the edges trimmed and the gutters cleaned out.

All these things ensure that the church and churchyard are maintained in excellent condition for services, weddings christening and funerals. Also for visitors, of which we have a regular stream who, according to their comments in our visitors book, are highly complimentary of our church.

We really could do with more members to continue with this work. The effort required from each individual is minimal, but collectively we achieve a great deal. Please think seriously about becoming a member of the Friends, and joining us in this good work.

Membership Forms can be obtained from me on 01454 238553 or our Secretary, Pauline Setterfield, on

01454 238307, or Neil Fozard on 01454 238281.

Subscription Renewals are now due for existing members are asked to return their forms to Neil Fozard.

As mentioned last month, we were very happy to see the marriage of Lisa White to Christopher Overton on 16th May. We wish them both every happiness. Lisa is a founder member of the Friends and gives tremendous support, and it is good to see that Christopher has already started to be a willing worker for our charity.

June 29th saw what is fast becoming a regular event in our calendar, 'Jazz on the Lawn' in the gardens of Church Farm House, courtesy of Lisa and Christopher. The weather was kind to us and over one hundred people enjoyed the music of French Connection, with a stunning interlude of close-harmony songs by the ladies of the Cats' Pyjamas trio. An abundance of refreshments ensured that the picnics and pork rolls were well washed down. The weather was ideal for Pimms and the ale, subsidised by our own Mark Franckom's Cotswold Spring Brewery, never ceased flowing. We are now considering our next major project for the church, probably restoration work on the tower, and the funds raised by the event will help start the ball rolling.

Talking of balls, there will not be one again this year, but it is a must to keep your diaries free for 19th June in 2015. We are planning a function on a large scale to commemorate an event of historic significance! More to follow soon.

Saturday 30th August, still in 2014, our next function will be the Pimms Tent at the Horticultural Show, so do

not forget to visit our marquee and sit in our little garden area with your friends to consume a leisurely jug or two!

On Saturday 15th November Robin Scott-Martin from Harveys will be talking sherries at our Sherry and Tapas Evening. Tickets are £12.50 so put the date on your diaries and tell your friends to come along too!

The Website is now virtually complete and will be launched at the end of July, thanks to the hard work of Peter Setterfield.

Looking further forward, Christmas will see our Nine Lessons and Carols Service, followed by mince pies and mulled wine.

Bill Fairney, Chairman

Wedding Congratulations!

Our congratulations go to
Andrew and Karen
Morgan who were
married on
Saturday 28th June.



Inside this issue:

Editorial	Page 2
Diary Dates	Page 3
Pre School Update	Page 4
Rainbows & Guides update	Page 6
Hawkesbury Scarecrow trail	Page 9
WI News	Page 13
Hawkesbury Show news	Page 16/17
Village Walk	Page 19
Cricket Fixtures	Page 23
St Mary's news	Page 29
Parish Council update	Page 33/34

Copy deadline for September issue: Friday 15th August

Editorial

Fiona Writes...

Welcome to the August issue of the *Hawkesbury Parish News*.

August beckons and the long summer holidays are here at last for children and students, and of course, parents and grandparents. All will be looking at the long weeks stretching far into the distance, with differing viewpoints! Perhaps, the holidays should kick off with a new game of who spots the first "Back to School" promotion to appear in the shops in early August!

For all those on holiday declaring "I'm bored!", there are plenty of Show entries that can be done in the next few weeks - from carnival

costumes to pictures, models and recycled objects, so get out the Show schedule and get them creating! It might even save that desperate last-minute rush! Veg is now popping up everywhere. The recent deluges and storms followed by hot sunshine have brought everything on at a rate of knots. Courgettes are appearing on almost a daily basis, cucumbers are arriving at an alarming rate and French beans are absolutely delicious. I love it! An experiment to grow tomatoes in hanging baskets and climbing French beans and onions in a half barrel in the front garden has proved a great success—

proof that veg can be grown in a space of any size without too much effort.

So what is there to look forward to this month? Well, there's the **Village Walk on 2nd August**, **The Hawkesbury Open on Saturday 16th**, and of course **Hawkesbury Show on Saturday 30th** (not the Bank Holiday!). Let's see if we can make this a bumper year for Show entries! See you there!

Please note — the **deadline for the September issue is the 15th August**. All early copy is greatly appreciated.

Parish News Team

Hawkesbury Parish News is edited, produced and distributed entirely by volunteers. Advertising and subscription revenue covers the cost of production only.

Typesetting, Fiona Rowe
Layout, Editorial: parishnews@hawkesburyupton.com

Treasurer & Subscriptions: Vicky Rispin
vicky@coombeview.com

Editorial Team: Fiona Rowe
Vicky Rispin

Copy to: Fiona Rowe, 24 Sandpits Lane
Vicky Rispin, Coombe View,
High Street (next to the Village Hall)
parishnews@hawkesburyupton.com

Advertising: Jill Bendeaux
parishnewsads@hawkesburyupton.com

Distribution: Pauline Dixon 01454 299236
pcdixon@waitrose.com
Suzanne Flye

Printed by: Sprint Print,
22 Station Road, Yate. 01454 852255

Electronic copy always gratefully received — please save files in Microsoft Word or Rich Text Format (rtf). Only digital photos sent by email can be accepted.

Disclaimer

Any opinions expressed or implied within this publication are not necessarily those of the Editors. The Editors reserve the right to exclude any item whose authorship is not disclosed. No responsibility can or will be accepted for any opinion, comment or error of fact printed in this magazine. All advertising is included in good faith; its inclusion does not necessarily endorse the product or service.

Useful Local Info



Hawkesbury Village Shop Opening Times

Monday - Saturday - 8am-6pm
Sunday - 8am-12:30pm

High St, Hawkesbury Upton. Tel: 238639



Hawkesbury Post Office Opening Times

Mon: 9am-2pm **Thurs:** 9am-1pm
Tues & Wed: 9am-12pm **Fri & Sat:** 9am-5pm

Back Street, Hawkesbury Upton, GL9 1BB

Tel: 01454 238341 www.hawkesburyuptonpostoffice.co.uk



Postal Collection (opposite shop)
Mon-Fri: 4:45pm / **Sat:** 10:30am

Did you know that we have Websites for the Village and also for the Village Hall?

www.hawkesburyupton.com and www.village-hall.org

You can use these websites to:-

- Check the Hall & Village calendars
- Book the Hall online
- View the Hall & Parish Council minutes
- View past editions of this magazine
- Link to many other village organisations
- and much more.



Compost	£1.50 per bag
Logs	£2.50 per bag
Firewood	£1.50 per bag
Woodchip	£1.00 per bag

All available from the composting site behind the village hall

For more information on prices and delivery of larger amounts, contact: Steve Dagger on 07903 037297



DATES FOR YOUR DIARY



Coffee Mornings

Coffee Mornings take place on Mondays from 10am - 11.30am.

At Peggy Woffenden's house

Tea, Coffee and a biscuit or two for 50p. All welcome.



Next Parish Council Meeting

The next Parish Council meeting will be on **Mon 18th August 2014, 7.30pm** in the Village Hall.



Mobile Library



Times & Dates

4 & 18 August

Hawkesbury Village Hall 2.35 - 3.00

Hawkesbury War memorial 3.05 - 3.20

Hawkesbury Highfields 3.25 - 3.40

SMALL, FRIENDLY YOGA CLASSES

with Joan Boulton

at the Methodist School Room, Back Street

Thursdays 10-11.30am

All ages and abilities. Just £6 a session

More details call 01454 238044



Evergreens

Tues 12th August

"Some Enchanted Evening"

Terry Merrett-Smith

2:30pm at the Village Hall

If you would like to come along and need a lift please give me a ring.

Mandy 01454 261436

Charity shop items required for Mercy in Action who support ongoing work in The Philippines such as

Orphanages, street children and house building for poor families.

Any donations can be dropped off at

The Granary, Park Street

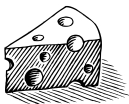
or tel Diana 238472 and I will collect.

Save the Date!

Back by popular demand...

Hawkesbury After School Club
Cheese & Wine evening

on Sat 20th Sept 2014
in Hawkesbury Village Hall.



Songs of Praise in the Show marquee

Sunday August 31st

There will be an ecumenical service, held jointly with Bethesda and the Methodist Church, in the Show marquee the day after Show day.

Service starts at 11am
All welcome.



25TH HAWKESBURY OPEN GOLF TOURNAMENT

Saturday 16th August 2014

at Cannons Court
Golf Club

Pop the date in your diary now!



Hawkesbury Cricket Club

Diary Dates 2014

Presentation Evening - Saturday 27th Sept.

Add it to your calendar now!



SELF-CATERING COTTAGES ON INGLESTONE COMMON

Having a family do or some building work?

There are a number of self-catering cottages available, accommodating from 1 - 14 people.

Ring Hazel on 01454 299227 for details
or view on www.cotswoldedgecottages.com

KLEEN & GREEN

Professional cleaners who care

- ◆ Domestic and Commercial cleaning—daily/weekly/one off
- ◆ All staff police checked, fully trained, fully insured
- ◆ Local, reliable, friendly
- ◆ Ironing service
- ◆ Competitive rates

Tel: Sarah 01454 851487
Christine 07900 831967



At preschool last month the children enjoyed a fabulous end

of term with so many exciting activities; sports day - which was attended by parents and siblings, a world cup sweepstake, lunch at Hawkesbury School and visits from children's pets. Finally, the last day of term was celebrated with our fabulous 'Party in the Park' - with a bouncy castle, face painting and games. This was also a farewell party for the older children who are all leaving us for school this September and a goodbye to our play-leader Kelly, who is leaving us at the end of our last term also.

Some very exciting news this month, which we are proud to share – is that we have had the results of our recent Ofsted visit and have been awarded 'Good', with only two recommendations. This is brilliant

Hawkesbury Pre-School Update

news and we would like to thank all our staff, parents and committee members who helped us in achieving this fantastic result, of which we are very proud.

Thank you also to everyone who supported our 'Toddlers Obstacle race and Teddy Bears Picnic' which raised a fabulous £300 at the last count and sponsorship money is still coming in.

PRESCHOOL AGM: TUES 16TH SEP: 8pm start at The Fox. A date for your diary - this is the annual general meeting open to all parents of existing and new Preschool children. A brilliant opportunity to

have a few drinks and nibbles, get to know other parents and the team, and understand/get involved in the Preschool Committee

Our small, rural preschool is based in the parish hall at the heart of our beautiful village and vibrant community. Sessions run from: 8.45-11.45am, with optional 'lunchbox' sessions extending this to 12.30: Mon, Weds, Thurs & Fri (term time).

If you would like to join pre-school, or for more information please contact one of our play-leaders: 07989 484 / enquiries@hawkesburypreschool.org.uk / [uk /](http://uk/)

HAWKESBURY TODDLERS WELCOMES YOU

Come along to our relaxed & friendly parent/carer and child group – everyone welcome, from bump and up!

Tuesday's in term time. 09.45-11.45. Hawkesbury Upton Village Hall.

Enjoy a cuppa while the toddlers enjoy our toy collection, craft session, snack, music, books & much more.

'Like' our Facebook page 'Hawkesbury Upton Toddler Group' to receive info on news and events.



Summer Garden Party update

We were so lucky with the weather for

THE SUMMER GARDEN PARTY

The thunder rolled and the rain came down in the morning, but come 2pm the sun was shining!

We raised just over **£700** for the Senior Citizens Fund!

THANK YOU to everyone who donated items for stalls, lent us gazebos, helped on the day and came and spent their money

Especial thanks to Mary and Tim Davies for letting us use their paddock – which allowed us to have donkey and pony rides as well.

Sam Allen, Tim Davies, Liz Howard

On behalf of the Senior Citizens Fund Committee

Stop Press! Stop Press!

Congratulations to Bree and Dan Evans (and big brother Freddie) on the arrival of a new baby girl, as yet unnamed at time of going to press.



SEVERN VIEW FARM
— Sold on Taste —

Boarding Cattery
01454 299471



Warm, comfortable, secure holiday accommodation for cats.

Special diets and medicines catered for

SEVERN VIEW FARM
— Sold on Taste —

Organic Farm Shop
01454 299236

Good, tasty organic food from our farm on Inglestone Common.

Open Saturdays and Sundays
- 10am to 4pm.



PEGASUS HEATING AND PLUMBING

OFTEC Registered C8787
GAS SAFE GAS INSTALLER No 68606

- ♦ Oil, Gas and Solid Fuel
- ♦ Installations and Repairs
- ♦ Bathrooms and Kitchens
- ♦ Domestic and Commercial
- ♦ Lead work specialist

ALL WORK GUARANTEED

Tel 01454 327708 Mobile 07860 471232



Hawkesbury Upton
welcomes you to their



School Open Day

Saturday 4th October 2014, 10am – 12noon

- Join us to see learning in action
- Meet teachers, parents and students
- Explore the extensive grounds and sports field
- Find out about Breakfast and After School Clubs
- Take part in fun activities for children of all ages

Call 01454 238629 or email enquiries@hawkesbury.org.uk for more information

www.hawkesburyprimaryschool.co.uk

HAWKESBURY THEATRICAL GROUP INVITE YOU TO A CASTING MEETING

on Wednesday 3 September at 8.15pm in the Methodist Hall School Room.

The production which is on 21 and 22 November, will feature Music Hall, sketches, songs, poems and local reminiscences based around the experiences of the First World War.

We are also keen to recruit back stage help (lighting, set design, costume etc.)

If you can help or for further details call Fiona Webb on 01454 238758.

YOUTH THEATRE WORKSHOPS FOR YOUNG PEOPLE AGED 8 – 16

As part of the WWI production in November we will be running two drama workshops on Saturday 11 and 18 October from 10am – 3pm at Hawkesbury

School Hall. The sessions will be run by actor and producer Ed Littlewood and

will cost £5 for two sessions.

NUMBERS WILL BE LIMITED so if you are interested please contact Fiona on 01454 238758 or Liz Howard on 238417

PS A commitment to be available for the Dress Rehearsal on Sunday 16 November and the performance dates is of course vital.

Would you like cash for something round the home that you no longer want/need/like?

Well, why not sell it on ebay?

I have been active on ebay since 2001 and my 100% positive feedback is as a result of more than 800 deals. For a percentage I will deal with everything including taking photos of the item, setting up the auction on the ebay website, dealing with any queries from buyers, receiving the sale proceeds and posting off the item for you. Some items might attract a better price at a local auction house, and dealing with this is another service I can offer. You can set the starting price and if required, set a reserve price. Any questions, call me on 238778, email me at mickbendeaux@hotmail.com or come and see me at 20 Birgagge Road.

ANTHONY HARCOURT OSTEOPATH & ACUPUNCTURIST

No 3 Horse Street,
Chipping Sodbury
BS37 6DA

Tel: 01454 326256

1st Hawkesbury Upton Rainbows and Guides—this is what we've been up to...



1st Hawkesbury Rainbows

We have 25 girls at the moment, aged between 5 and 7, from Hawkesbury and surrounding villages (Horton, Hillesley, Didmarton, Badminton, Luckington, Bagpath, Leighterton)

We've been working on our Rustle Bustle and Squeak Badge—we re visited our tawny owl nest box in Lower Woods and we've been stream dipping there too.

We also did a nature walk and picnic near to our meeting place.

We put on a ballet performance in the village hall during the interval of the Guide play.

We also joined other Rainbows from the District at a Rainbow Rodeo Day which was great fun, including learning to line dance and horse shoe toss!

At the moment we are travelling around the world to complete our Global Adventure badge—we have our own passports which get

stamped and even have plane tickets!

We've been collecting pennies for Briarlands/Badminton Cottages and also stamps for the RSPB.

We're ending this term with a Frozen theme party, lots of fun—we also say goodbye to Holly, Ila and Elizabeth who are moving on to Brownies...continue the fun, we'll miss you!

Big thanks to Caitlin and Rebecca who joined us as Duke of Edinburgh volunteers and then stayed on—you are stars and make a huge difference!



1st Hawkesbury Guides

We have 25 girls aged between 10 and 16 from Hawkesbury, as well as surrounding villages (Hillesley, Didmarton, Grittleton, Luckington and Kingswood)

We put on a performance of *The Princess and the Pauper* in the village hall earlier this year and had an actor in to give us tips and had lots of fun learning different techniques.

We've also had a visit from a local artist to teach us calligraphy.

We were invited by Guiseppa and Aggi to The Fox where we had great fun making pizzas and calzone which we then enjoyed eating.

We did an Afternoon Tea in Hawkesbury.

We've completed *Looking at Me*, a programme trying to help girls have a positive body image and self esteem as well as *Me in Mind*, a resource promoting emotional well-being we also took part in a national Girlguiding project called *Girls' Voice*, where we completed a workshop spread over a few weeks to find out what the girls thought about gender equality topics and the key issues they felt they wanted to see action/change on—the top three outcome for our girls were:-

- 1 Low body confidence and self esteem
- 2 Mental health issues eg stress, depression, eating disorders
- 3 Girls' rights internationally, including making sure girls can go to school, have their voices heard and be safe from violence

Our camps/residentials/trips this year are..

Malvern Challenge weekend -a 7 mile walk with various challenges along the way

Brownsea Island in August for 5 nights-lots of fun, learning new skills and helping out too

Alton Towers in September-1 night camp plus fun at the theme park.

Guiding in Hawkesbury goes from strength to strength, but we wouldn't be able to do this, any of it, without your support, so an enormous THANK YOU for your support, we really do appreciate it!

If you would like to put your child's name down on the waiting list, please go to the Girlguiding website and follow the parents link or contact Louise on 01454 238628 or louise.roberts622@btinternet.com

Thank You once again from Joan, Kath, Fiona, Caitlin, Rebecca and Louise

B.H. COLE & SON LIMITED

Tel: 01454 238896 or mobile: 07970 911412

- ◆ NHBC Registered Housebuilders
- ◆ New Housebuilding
- ◆ Extensions & Conservatories
- ◆ Renovation & Refurbishment
- ◆ Patios, Paths, Walls & Landscaping
- ◆ Natural Cotswold Stone Walling a speciality

BUILDER'S RUBBLE, DEBRIS, GARDEN WASTE...

Any old junk cleared and hauled away
I can do the job at less than it would cost to hire a skip...
AND you don't have to load it!

Call TOM COLE on 01454 238896
MOBILE: 07970 911412

THANK YOUs

Sorry this is belated but we need to say it.

With your help (as well as donations/grants) we have now raised the £1760 cost (after £30 per person has been paid) of our 6 day trip to Brownsea Island-this covers food, accommodation and transport as well as activities.

Special thanks should go to everyone who supported our Afternoon Tea in May (£221.96), everyone who sponsored Joan and Louise for the 5k fun run (£133 split between Guides and Hawkesbury Show), Barry Yuill, ably assisted by Adrian Blenkinsop for the pub quiz, Mark for the venue and food and to the Summer Skittles for wine for our Raffle (£161).

We've had grants/donations from Parish Council (£200), The Buffs (£50), Friends of Guiding (£450) a

Yate & district Rotary Club (£250), a very generous donation at the start of £500 and individual donations from villagers of £65.

Fundraising is always ongoing to make these trips affordable - transport costs are our biggest nightmare and we have to say special thanks to Andy and the Beaufort Transport team for continued support over the years with this.

We have 1 nights camp at Alton Towers to look forward to in the Autumn and if we're successful with our ticket bid, the Big Gig in October-a concert at Wembley just for Girlguiding, with over 8 acts. We already have over £400 fundraised towards transport costs, which is fantastic.

1st Hawkesbury Upton Guides

HAWKESBURY OPEN GOLF

If anyone has any raffle prizes they'd like to donate, please leave them in my porch (Stone Cottage, Back Street).



All monies raised from the raffle will go to the Methodist Church towards ongoing repairs.

I will be outside Hawkesbury Shop between 10-12 on Saturday 16th August selling raffle tickets if anyone would like to buy any.

Louise Roberts

Hawkesbury Youth Club News

WANTED: PEOPLE WITH SPECIAL SKILLS & INTERESTS

Do you enjoy a special hobby or have a particular talent that you'd be willing to share with young people in the village in a one-off evening workshop? If so, Hawkesbury Youth Club would love to hear from you!

We are currently planning our autumn term sessions, which meet weekly on Tuesdays at 7pm-8.15pm in the Village Hall, and we'd love to include visits by special guests who could demonstrate craft or sports skills that our members might like to try them for themselves. Any form of hobby would be welcome, such as jewellery making, cookery,

model-making, card games, chess, magic tricks – we're open to suggestion!

We're particularly in need of these visitors due to the imminent departure of two regular and much-valued helpers from the group – Anna Bleaken, who has done a brilliant job running cookery sessions, and Tom Weston, who has done fabulous work organising sports activities. They will both be greatly missed, but we wish them every success as they go on to pursue their studies and new careers.

For our last meeting of the summer term, we had a welcome unexpected guest, the Reverend Richard Thomson,

who dropped in to say hello while we were enjoying a Caribbean party in the Rec, for which Anna had engineered an array of exotic food and drink. The grilled pineapple went down especially well. Thanks also to Annice Anderson for lending us her drinks fountain and inflatable flamingos.

Hawkesbury Youth Club is now taking a break for the summer holidays and will start up again on Tuesday 9th September. New members are welcome aged 11+. To find out more about it, just come along on any club night between 7pm and 8.15pm, or call Mark Frankcom, Youth Club Chairman, on 238720.

The Farm Shop at Hawkesbury

A J Morgan Farm Produce, France Lane Farm, Hawkesbury Upton, GL9 1AN

Home Reared Pork, Lamb & Aberdeen Angus Beef
Free Range Poultry, Home Made Produce.

**DO YOU KNOW WHERE YOUR FOOD COMES FROM?
TRY US-BUY LOCAL - We're NOT expensive!**

Shop open 10am-1pm weekends.

Free local deliveries. Contact Karen 07929 947149



Hawkesbury Village Hall
Mon, Wed, Thurs & Fri 8.45 - 11.45am

**All children are welcome
from two years old**

Please contact us on
07989 484 774

Charity number 1013170 Ofsted Registered 136003

AS PART OF THE PARISH'S WORLD WAR I COMMEMORATION

WE ANNOUNCE

'THE DAY BEFORE WAR' VILLAGE TEA PARTY

TO WHICH ALL ARE VERY WELCOME on Sunday 3 August 2014 from 3pm to 5pm at the Village Hall

EDWARDIAN DRESS OPTIONAL PRIZE FOR BEST DECORATED HAT OR FLORAL DECORATED TEA CUP

Families may wish to bring gazebos



Let Louise Roberts know if you can donate a cake or sandwiches on 01454 238628

Sincere Condolences

On behalf of the Parish News and our readers, sincere condolences to Martin and Mike Gardener and family on the passing of mum, "Betty" Gardener in July, aged 86, wife of the late Charlie. A lovely lady who will be deeply missed.

Our thoughts our with all the family at this sad time.

A Poem by Ann Harris
Time is not measured
By the years that you live,
But by the deeds that you do
And the joy that you give.
And each day that it comes,
Bring a chance to each one
To live to the fullest
Leaving nothing undone.

MADE TO MEASURE CURTAINS & BLINDS
CHOOSE IN THE COMFORT OF YOUR OWN HOME
Large Selection of Fabrics
Full range of blinds: Verticals, Venetians, Rollers, Velux Blinds
Tracks & Poles - Customer's Own Fabric Make Up
Measuring & Fitting
at home CURTAINS & BLINDS
Charfield, Wotton-under-Edge
Call Grant on: 01453 521751, 07799 822691 or Email: gb_at_home@yahoo.co.uk
For a no obligation quote
A local service with 20 years experience

MARK POWELL
DOUBLE GLAZING INSTALLATIONS & REPAIRS
WINDOWS - DOORS - CONSERVATORIES
SASH WINDOW REPLACEMENT SPECIALIST
MISTED UNITS, HANDLES & LOCKS REPLACED
LOCAL TRADESMAN
CALL MARK ON
01454 326804
MOBILE 07860 805197

HAWKESBURY UPTON'S VERY OWN AUTUMN SCARECROW TRAIL/HARVEST DISPLAY



SATURDAY 4th -SUNDAY 12th OCTOBER 2014

*** trail maps will be available from the Hawkesbury Shop,
the Post Office, The Fox and The Beaufort Arms**

**If you would like to join in the fun and do a display/
scarecrow either for your garden, your street, your group
or even between a few houses, then please let
Louise Roberts know (238628) by Mon 29th September,
to be included on the trail map**

No prizes, just a chance to make the village come alive!

**There will be a United Churches Harvest Service on
Sunday 12th October in the Village Hall, 4pm, all welcome**

please note, this isn't a Halloween trail

T. F. BLEAKEN CARPENTRY & BUILDING CONTRACTOR

FIRST & SECOND FIX CARPENTRY
BESPOKE JOINERY
TRADITIONALLY CUT ROOFS
FITTED CABINETS
BESPOKE KITCHENS & BATHROOMS
RESTORATIONS & RENOVATIONS
BUILDING EXTENSIONS & CONVERSIONS



IF YOU HAVE ANY QUESTIONS OR WOULD LIKE A QUOTATION FOR
YOUR POTENTIAL CARPENTRY OR BUILDING PROJECTS,
PLEASE DO NOT HESITATE TO CONTACT ME.

KIND REGARDS
THOMAS FREDERICK BLEAKEN

TELEPHONE: 07885838922 E-MAIL: tf.bleaken@hotmail.co.uk



- Home boarding
- Day care
- Dog walking
- Home visits

**A friendly and reliable service
covering Wotton-under-Edge and
surrounding areas. Fully licensed
and insured.**

**Call Steve on 01453 842167 or
M: 07800 848570**



TROWEL & ERROR

HAWKESBURY GARDENING CLUB

www.hawkesbury-gardening-club.org.uk

Meetings are held at 8pm on the 4th Monday of the month in the Methodist Hall in Back Street.

Our June meeting was also our AGM. True to form we have had another good fun year. We have had to reduce the number of speakers in order to make the funds go farther but this hasn't reduced their quality. We have also had some really good social events. Thanks to the team for organising that.

Members breathed deep sighs of relief when the committee volunteered, almost en-bloc, to continue for another year. Business as usual, OK!

Business over, there was no reason to delay the main event of the evening which was a Gardeners Question Time with Brian Noble and Angie Chillcott in the hot seats. Brian handled the vegetable questions and Angie took the flowery ones.

The club class in the Horticultural Show on Saturday 30th August will once again be 'A Vase of

Culinary Herbs'. On hearing this Diane Musty chuckled her little chuckle and promised not to win again – actually she didn't win last year - but if she does we send her to the foot of our stairs.

The entry should consist of a maximum of five different herbs used for cooking or in salads. The herbs must be grown in the entrant's garden or allotment. Leaves and flowers of the herb may be used. The herbs will be judged on quality, variety and arrangement.

Our next meeting is on Monday 22nd September.

If you are not a member but would like to hear a speaker that takes your fancy then come along as a guest – fee £3.00. For further information contact Terry Truebody on 01454 238364 Terry Truebody (01454 238364).



THE SEASIDE

By Alan C. Porter



I can't think of a better place to be on a warm summer's day, slurping on a Mr Whippy with a double flake and listening to the sea ebbing and flowing on a sandy beach and wishing I could be down there, on the sand with a bucket and spade ready to create the best sandcastle ever.

When young enough to build sandcastles without raising eyebrows I lacked the necessary engineering skills to create a sand sculpture of breath-taking magnificence. It was just a haphazard circle of fez-shaped mounds that passing feet flattened along with my dreams.

Years later with children of my own I tried to impress by building one castle on top of the other. As it collapsed boredom and

disappointment filled hopeful eyes that only an ice cream could dispel.

More years than I care to think of later, taking the grandchildren to the beach and thinking now is my time to finally shine in the sandcastle stakes. The upturned bucket is carefully removed to reveal, at last, the perfect shape, I look up for adoration in young eyes instead get a clout on the head with a plastic spade as wriggling feet demolish the perfect castle amid happy giggles and cries of, "again, Grampy."

Never mind the perfect castle, I think I'm doomed to build castle ruins forever.

I'm off to get a Mr Whippy, this time with a treble flake!

Home and Garden Services

Paul Trotman

Local Handyman



Experienced in **general home repairs, garden maintenance** and **decorating**

Also **Laminate and Wood flooring** – supply and fit

Available for Individual Jobs and Regular Commitments

Please contact Paul on: **07773309681**



THE HEALTH SHOP

27a Horse Street, Chipping Sodbury
BS37 6DA. Tel: 01454 322168

Range of wholefoods including: special diets,
Dried fruit and nuts, herbs and spices,
Herbal and homeopathic remedies,
vitamins and supplements,
aromatherapy oils,
Bach flower range



HU5K News

Hawkesbury Upton's third annual fun run, HU5K 2014, took place on 14th June, and we didn't quite have the results formalised in time for the copy deadline of the July issue of the Parish News, so here they are now – and very impressive they are, too!

Adults Men

1st James Priest (18'42") 2nd Geoff Robson (18'51") 3rd Dan Ball (19'10")

Adults - Women

1st Eileen Hodgson (24'01") 2nd Fanny Marshall (25'16") 3rd Tracy Ryder (26'10")

Secondary – Boys

1st Jack Derrick (19'13") 2nd Tom

Royston (19'28") 3rd Gethin Robson (20'43")

Secondary – Girls

1st Mia Stukins (26'43") 2nd Anna McLaughlin (27'26") 3rd Olivia Green (27'35")

Juniors – Boys

1st Harry Ryder (23'11") 2nd Colby Barker (24'23") 3rd Leo England (25'13")

Juniors – Girls

1st Zoe Boyd (23'20") 2nd Anna Symonowski (23'22") 3rd Eliza Boyd (28'04")

We still have a couple of uncollected medals, so if your name is listed here and you weren't there to collect a medal on the day, please contact Debbie Young at

debbiehawkesbury@googlemail.com with details.

By the time you read this, the official photographs should be up on the official race photographer's website, where you will be able to order prints at reasonable prices: <http://www.photoboxgallery.com/HU5KRun>

Thanks again to all who helped this event raise approximately £3,000 for Hawkesbury Primary School PTA – an amazing achievement that is a credit to all involved.

Make sure you put the date for next year's HU5K in your diary: Saturday 20th June 2015.

For more information please visit our website:

www.hu5k.org

Gloucester Rugby this Sumer

An opportunity to find yourself at the heart of the game this summer is at Gloucester Rugby who host two Rugby Camps to grow the next generation of players.

Aged 14-16? Prepare to face a challenge unlike any before; Gloucester Rugby has teamed up with the Royal Marines for a one-of-a kind rugby camp at Chivenor Marine Barracks. Our coaching sessions use the latest training methods while The Royal Marines will provide insight into their lives with challenges including assault courses and leadership tasks forming a hard, yet extremely rewarding week.

Aged 8-13? On the 18th-19th August, we have a rugby camp at Hartpury College for younger boys and girls. Our highly qualified coaches will maintain a fun and friendly atmosphere as players develop skills and receive bespoke feedback on their game.

Basic rugby knowledge is encouraged but not essential.

Cost of courses: Marines: August 4th-8th (5 day residential camp) £330; Hartpury: August 18th/19th (2 day camp) £60. To book: www.GloucesterRugby.co.uk/community/communityrugby or email communitymarketing@gloucesterugby.co.uk for more details.

Volunteers needed in GP Surgeries

Our minister has been asked by the Carers Support Centre if it would be possible for anyone within our village to offer a few hours a month to meet carers who might be bringing an unwell, disabled or elderly family member or friend to the surgery.

If you are outgoing and could offer two mornings a month to greet and give information to carers, Mike Hatch of the Carers Support Centre would be pleased to hear from you on 07503 577830 or gp_volunteers@outlook.com

Joan Boulton

JOHN DAY ENGINEERING



All types of mowers serviced & repaired
Free local collection & delivery

All fabrication & wrought iron work undertaken
Gates, fencing, lighting etc.

Please tel: 01454 238365 or 07947 636308

Ride On Cycles

The Mobile Cycle Workshop That Comes to You

Full range of servicing & repairs carried out by a City & Guilds qualified mechanic, collection & return service also available.

Have your bike service now so it's ready for the good weather & avoid the last minute rush.

Contact Andy on:

01454 880872 / 0744333219

andy@ride-on-cycles.co.uk

www.ride-on-cycles.co.uk



The Farm Shop at Hawkesbury

France Lane Farm, Hawkesbury Upton, South Gloucestershire, GL9 1AN
 Tel: 01454 238215/07929 947149 Website: www.ajmorganfarmproduce.com
 Email: ajmorganfarmproduce@gmail.com

Please join us for our

Tasting Day - Saturday 9th August **2pm - 5pm**

Andrew will be barbequing a range of our home made sausages & burgers for you to try with bread from Walker's Bakery at Wotton-Under-Edge

There will be tea tasting with Kirsty from "Blue Samovar" - Chipping Sodbury's very own tea company- to include our newly stocked "Old Sod's Tea"

Sue Elderfield will be presenting her "Yellow Top Preserves" - a delicious and unusual range of jams, chutneys & marmalades and asking you to taste test with Dinah's freshly-made seriously scrummy scones and Walker's Fresh Bread!

Try Ivor's Fantastic Real Farmhouse Ice-Creams, our new range of curry sauces plus other Farm Shop favourites.

Seating will be available.

Don't miss it!

DEB'S CELEBRATION CAKES

Individually designed cakes for weddings and special occasions

Workshops - have a go yourself and learn a new skill

Please contact me to find out more, discuss ideas or see my work

DEB PIDSLEY 01453 834394
07890292125

www.debscelebrationcakes.com

FIREWOOD

Dry seasoned hardwood logs, delivered cut and split to your requirements.

We also sell kindling and coal.

Lower Kilcott Farm
 Call Steve Thompson
 Home: 01454 232941
 Mob: 07974 194012

NE odd jobs

A fully insured, professional and reliable service

- Garden maintenance
- Cleaning
- Weeding, grass cutting
- Painting

... as well as all those other little jobs you just never seem to get around to.

Call: Nicola Evered

07947 072780 or 01453 844124

Hawkesbury & Horton WI



Our President welcomed members and visitor Jean Fly, from Newton Porthcawl, Glamorgan WI, to the July meeting. During which florist Pat Downes provided us with lots of ideas as she demonstrated her floral art, making a tied posy, corsage and also table arrangement, all of which were raffled afterwards. Hopefully this will inspire more members to enter the classes at the

Hawkesbury Show!

Our WI will also provide drinks and serve teas at the World War 1 Commemoration Tea Party on the 3rd August.

Flower of the Month Competition was won by Christine Gamlin with a dahlia.

Christine also won the Button Hole Competition with an orchid.

Diary Dates

No Hall Meeting in August

5th August Pizza Evening with Liz and Sam at The Laurels, Back Street.

2nd September Photographic Images Set To Music with John Parsons

Competition Animal Antics photograph

Visitors are welcome at our meetings on the first Tuesday of the month, 7.30pm in the Village Hall.

Betty Salthouse 01454 238410

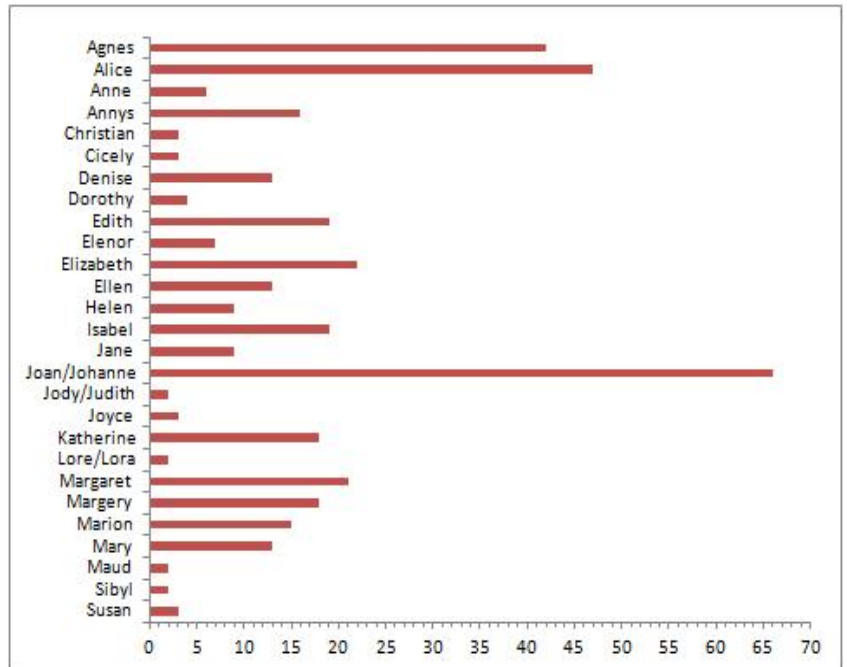
Hawkesbury Local History Society – Snippets from the Archives



What's in a name???

Part 2

What name might you have chosen for your daughter in Elizabethan Times? Were there any regional preferences? This we wouldn't be able to find out without a very large countrywide survey. However, we do have some



statistics for the Hawkesbury area from wills dating between 1544 and 1600. By far the most popular name was JOAN in all its variant spellings (Joan, Jone, Johanne, Johan), closely followed by ALICE (Alyce, Alec, Alce, Alse). As well as the 'expected' names (e.g.Elizabeth) there were some which wouldn't be out of place in the middle class home of today: Helen, Eleanor, Denise and Isabel were all surprisingly common. Spare a thought for the scribe though when he found out he would be expected to write the name 'Denise', that one really did stretch his ability: Deanes, Dynese, Denys, Deenes, Denyce, Dyonyse. Now test yourself on this one: Jewlyanne (clue – it's not a girl's name)!

NO MEETING THIS MONTH, BUT HOPE TO SEE YOU IN SEPTEMBER



...punctuality, pride, courtesy, and quality all come as standard...

- Range and AGA specialist
- Ovens and hobs
- Extractor hoods
- Traditional stoves
- Microwave ovens



LET US HELP
call Clive Wallace on
0800 140 9800
07825 709 354
I look forward to hearing from you
www.oven.co.uk
Ovenu (South Cotswolds)

the UK's favourite oven cleaning specialists

Buskins Shoe Shop
Nailsworth

- Ladies shoes
- Mens shoes
- Bags & purses

Tel: 01453 836836
www.buskins.co.uk



Cheese and Wine Tasting Quiz

Saturday 20th September
7.30 pm village hall.

Back by popular demand -
with higher quality wine!



It's a cross between a pub quiz and a cheese and wine party – but you don't need to know anything about cheese or wine!

Quotes from previous years

"Best night out in the village I have ever had - and there have been some good ones!"

*"I haven't laughed so much in ages - what a great fun and really different night out"
"A brilliant night with a bit of cheese and wine thrown in!"*

This is a fundraiser for After School Club and so we are inviting donations. Give as little or as much as you like - we are suggesting a donation of around £10 - £12.50 per player and teams of about 4 but we can only accommodate 60 guests so it's first come first served.

Please let Celia or Nuala know numbers.

Full bar available for beer drinkers too.

Please use our on-line donation page and we can claim the gift aid at no extra cost to you - that's an extra £2.50 for each £10!

<http://mydonate.bt.com/events/cheeseywinequiz/103235>

(and let Celia or Nuala know how many people will be attending)

Or, if you prefer to donate to us directly contact

Celia Rowlands on 232920 and cwathen@btinternet.com or

Nuala McLaughlin on 238199 and nuala.mclaughlin@virgin.net

Fancy a break in North Cornwall.....?

Our apartment is adjacent to the North Cornish coastal path, with access to stunning beaches. With 2 bedrooms/ bathrooms, it is our special retreat and has all the comforts of home.

For rental details, please contact Chris on 01454 232927 or email chrissav5@yahoo.co.uk.

MORGAN Plastering Services



INTERNAL/EXTERNAL
RENDERING
ALL FINISHES
COVING
DRY LINING
RELIABLE SERVICE
15 YEARS EXPERIENCE

Call now for a quotation
01454 850294
MOBILE 07909 937226

TRADITIONAL STONEMWORK & POINTING SPECIALIST

- Dry Stone Walling
- Brickwork & Blockwork
- Block Paving
- General Building
- Stone Tiling

STEVE GREEN

01454 238454 (after 5pm)
Mobile: 07813 245550



® **How to avoid a soggy bottom at Hawkesbury Post Office ??**

We have a host of new products for sale at the Post Office, including our new baking range, which also features the hit BBC book “How to avoid a soggy bottom” from the BBC series “Great British Bake Off”. (RRP £12.99, our price £6.50) Also on the book front, we have an exciting children’s book range, featuring the enchanting classics from Julia Donaldson, including The Gruffalo’s Child, Room on the Broom etc, (RRP £5.99, our price £3.50). We also have the entire Thomas the Tank Engine box set (68 books !) in its own engine shed gift box, what a lasting gift to keep the grandchildren quiet on rainy holiday days !!

We have our normal range of stationery supplies, gifts and cards for all occasions and our range of pocket money gifts and toys for kids, including the ever popular sticker books and colouring books and pens. We also have a whole new range of educational jigsaws for kids of all ages (even Granddad !) why not drop in and take a look ? I also sell stamps by the way.....

Hawkesbury Show 2014. The weeks are ticking by and Show day is fast approaching ! Show schedules and entry forms are available at the Post Office and at the Hawkesbury Shop. So you can buy your bakeware and mixing bowls at the Post Office, nip round the shop for

your eggs, flour, milk and butter and then zoom home to get baking that Show stopping sponge or fairy cake !! For the Arts and Crafts set, we also have floral Oasis foam in brick form, every conceivable kind of glue, crepe paper, card, sticky tape and photo paper for all your other show entries. It’s only four weeks away folks !! Get cracking !!

Two forthcoming “major” events in Hawkesbury during August dictate a slight reduction in our service hours as detailed below. This is due to the Hawkesbury Open Golf Championship on August 16th and, of course, Hawkesbury Horticultural Show on Saturday 30th August.

SATURDAY OPENING HOURS IN AUGUST : PLEASE NOTE:

Sat 16 th August Open 9.00am – 14.00pm only.
Sat 30th August Open 9.00am – 12.00 midday only.

Apologies for any inconvenience – don’t forget to get your cash for Show day before Midday on the 30th !!

All other Saturdays, we are open all day 9.00am – 17.00pm as usual !

Dick Blundell

www.hawkesburyuptonpostoffice.co.uk

HAWKESBURY HORTICULTURAL SHOW POSTER

Please find inside this August edition of your Parish News, an advertising poster for the 129th Hawkesbury Show
 You can help advertise the Show by -

- *Putting up the poster at your workplace*
- *Giving the poster to a friend or relative outside the village for information, or to put in their workplace*
- *Putting the poster in a shop or post office that you pass on your way to work*
- *Putting the poster in a supermarket – most have a community notice board*
- *Sticking the poster in your car window*

By any other way you think suitable! Many thanks!



JOHN H WALKER

GARDEN SOLUTIONS

LANDSCAPING & GARDEN MAINTENANCE
 EST. 1999

TEL: 01454238865
 MOBILE: 07974933398

Garden makeovers. lawn cutting and Maintenance, Turfing, Patios, Ponds, Water features, Decking, Hedge Cutting Fencing, All shrub work, Clearing, Driveways, & Planting.
All aspects of garden work undertaken

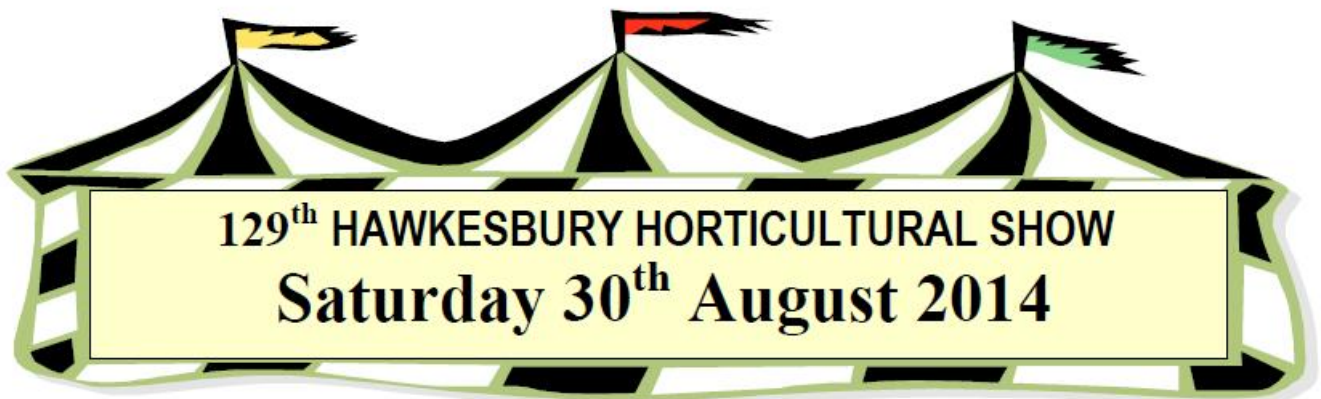
TAKING NEW BOOKINGS FOR THE LAWN MOWING 2014 SEASON NOW. CONTRACT BASIS OR ONE OFF.



Tyres Exhausts Batteries Servicing

**Repairs And Servicing For:
 Cars And Light Commercials
 HGV 6 weekly checks
 MOT pre-checks
 BEST tyre prices in Bagstone**

bagstone garage Wotton Road Bagstone Wotton under Edge GL12 1AB
 Tel 01454 228123 Email: bagstonegarage@aol.com



www.hawkesburyshow.org

At the Village Hall and Rec, High Street, Hawkesbury Upton GL9 1AU

Horticultural Produce and Crafts Marquee

Entertainment in the arena:

"Falconry Display by Michael Davie" - Both static and flying displays with interactive audience participation;
Clever Dog Company Rally Group - dog obedience demonstration

Beer Tent 🌸 Raffle 🌸 Pimms Tent 🌸 Bath Archers
 Hog and Deer roast 🌸 Fairground rides 🌸 Italian ice cream
Many varied stalls and activities around the arena

Carnival Queen crowned by Her Grace, the Duchess of Beaufort at 1.30pm
Carnival leaves The Plain at 1.35pm to travel along High Street to the Showground
*led by **Nailsworth Silver Band***
(High Street closed to vehicles 1.15pm – 2.00pm)

Auction of donated produce at the end of the day - Auctioneer: Mr Nick Cragg

Pick up your FREE Show programme at the gate, containing a full list of stalls and timings for all events

Showground gates open at 12.30pm

Pay on the gate or buy 'pre-pay' tickets from The Village Shop or The Post Office,
 Hawkesbury Upton

For further information or to book a stall phone 01454 232910 or email: Vicky@coombeview.com

Presentation tips for new Hawkesbury Show collection entries.

A collection of root vegetables Class 135

Whilst each set of vegetables must meet the normal presentation values of condition, and similarity, the entry will gain value if, as a whole, it looks balanced and pleasing on the eye. There is merit in having an entry where the round sets of vegetables are of a similar size even though they may not be the biggest one has, and like wise the short carrots and long beetroot balance up. The whole key is that the collection looks balanced.

A floral collection Class 330

Once again, when the usual conditions of quality and similarity have been met, the entry should look balanced and well presented. If the 2 bunches of flowers are of

similar size, their appearance would be improved by cutting them to the same height and placing them at the back of the entry with the pot plant at the front. If this is not possible due to the balance between length of stem and flower size is to be affected then the taller bunch would obviously be placed at the back with the shorter bunch in front with the pot plant next in turn to give a harmonious line from front to back.

Whilst this is all fairly basic, it is as well to remember that a collection should be enhanced by its appearance as a group, rather be seen as a set of individuals.

Brian Noble

Road Closure on Showday – Saturday August 30th

Just a reminder that High Street will be **closed to traffic** from **1.15pm to 2.00pm** on Showday to allow the carnival to assemble and proceed along High Street safely.

Timings are as follows –

- 1.10 – 1.25pm Carnival procession assembles at The Plain (vehicles pulling floats should park at the rear of The Plain or in Hunter's Mead). Judges view carnival classes and floats.
- 1.30pm Crowning of the Carnival Queen by Her Grace, the Duchess of Beaufort
- 1.35 – 1.55pm Carnival procession along High Street, led by Nailsworth Silver Band. Walkers and any hand-pushed or animal-pulled floats go into the Showground and assemble in the arena. Vehicle drawn floats continue along High Street, around Farm Pool then back into the Showground.
- 2.00 – 2.15pm Walkers and floats gather in the Arena for final judging of classes. Awards to winning entrants in each class and the prize for the Carnival Queen and her attendants, will be made in the arena. The Carnival Float Trophy and the Jim Morgan Trophy for best in carnival, will be presented at prize-giving in the marquee at 5.30pm.

Start planning your carnival entry NOW!

POLITE NOTICE to all car owners living on The Plain and along High Street - please help to keep the road clear for the carnival procession by parking off-road between 1 - 2.00pm.

Thank you from the Show Committee

Reminder to trophy and shield winners from Hawkesbury Show 2013

If you have a silver trophy, cup or shield, from last year's Show, please now return it. It will be seen again in the traditional trophies display in the Village Shop window in the week before the 2014 Show.

If you have such a trophy, please return it to either:

- Vicky Rispin, 'Coombe View' High Street. Tel: 232910
vicky@coombeview.com
- Sue Manfield-Cox, 'Millstone Farm', Inglestone Common, Hawkesbury, S
Glos. GL9 1BS

If you cannot get your trophy to either of these addresses, please contact Vicky Rispin who will arrange collection.

All trophies to be returned by **August 1st** please - cleaned and polished trophies will be received with extra appreciation!

Many thanks, The Show Committee

Amendment to Hawkesbury Show schedule.

Class 135, a collection of root vegetables, should read ; consisting of 3 each of any 3 varieties from - round beetroot, long beetroot, turnips, potatoes and short carrots, ie.9 vegetables in all.
The points awarded will be 1st-6 pts, 2nd-4 pts 3rd-2pts. and prize money, £3, £2 and £1

Show committee.



THE HAWKESBURY SHOP

HIGH STREET, HAWKESBURY UPTON,

TEL. 01454 238639

Email: anneweston@interwales.com

Facebook: <https://www.facebook.com/TheHawkesburyShop>

Come along to the Hawkesbury Shop

What a wonderful village we live in! After our short piece, a couple of months ago, in the parish news, we have had people bringing great ideas. Debbie Young very kindly set up a facebook page, which is fantastic, please like us <https://www.facebook.com/TheHawkesburyShop>

We've had requests for home deliveries out of shop hours, we would be extremely happy to do this in the village, at no extra charge, just phone or email your order and we will deliver at your convenience, no problem!

Je-Ann Shields is the new face of the shop, she will be there in the afternoons so pop in and see her lovely smiling face!

We now have **"CHEESE OF THE WEEK"** come in and try the tasters on the counter each week, please ask if you have any requests for cheeses you would like us to stock in the shop.

Hoping to have a DRY CLEANING SERVICE set up soon too!

New products are being worked on as we speak and will keep you up to date, check out the shop window

Lots of Local Produce available

Free Range Eggs

Home Baked Cakes & Meringues

Chutneys & Pickles

Pickled onions & eggs



Can you give an hour of your time on Show Day or the evening before?

If so, please contact:

Vicky Rispin:
vicky@coombeview.com
07817 913 214

or
Keith Player:
238463 or
0752 868 4267

Every precious hour helps!

News from Beaufort House

The residents at Beaufort House have been enjoying the recent summer weather in the garden. We are really pleased that the students from KLB art department have offered to create a piece of reminiscence art work, depicting shops from bygone days as part of their community project for this year. This will be in place, in the garden, by the end of term for all to enjoy and we are very grateful to the young people who have used their talent so enthusiastically for the residents' future enjoyment.

We are planning to add some other garden features and to renovate the old telephone box to complement the theme of this artwork. One

suggestion has been a static old bicycle as used for delivering groceries. If anyone has such an item at the back of the shed, that we could modify or restore, we would like to have the opportunity to discuss the possibility of purchasing it for this purpose. Readers might also have other items that might be suitable. Please contact Glenda Graham, Manager on 01454 238589 if you can help.



As always we thank the local community in Hawkesbury for

their continued involvement and valued support. Members of the Guides have been visiting regularly to befriend individuals, and the representatives of the Churches and School continue to be welcome visitors.

Beaufort House is always delighted to welcome visits from community groups or individuals to help the residents keep in touch.

Please contact Glenda (Manager) or Anne (Activities Co-ordinator)

Beaufort House 01454 238589

info@beaufortcare.co.uk
www.beaufortcare.co.uk



Sunshine Walk Saturday 2nd August 2014

Let's get out and enjoy the sunshine! It was certainly beautifully sunny as this was being written, but regardless of the weather; why not join us for another fantastic walk around the area.

This walk is taking us to parts of the locality we don't visit that often. We are off to Didmarton and Worcester Lodge. We will be starting at the Starveal end of Beech Lane so if you want a lift to the start or just want to follow someone else there, please meet at the village hall car park at 10.00 am. Alternatively you can meet us at the Starveal end of Beech Lane at 10.15 am for a 10.30 am start.

Dogs are welcome as usual and if we have had any rain it could be muddy so stout footwear please.

This walk will be followed by a barbeque at The Beaufort Arms by kind permission of Mark Steeds.

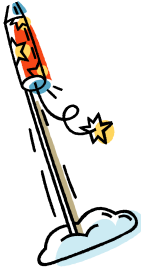
If you would like to receive email notification of future walks, please contact Jane Jones on rightsofwaygroup@hawkesburyupton.com or telephone 01454 238633.



HOGS presents



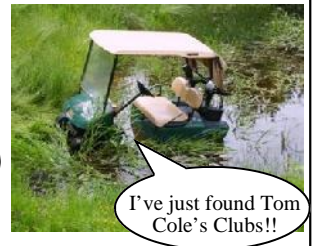
THE 25TH ANNUAL HAWKESBURY OPEN GOLF TOURNAMENT



on Saturday 16th August 2014 at Cannons Court Golf Club

Breakfast at 8:30am
Tee off at 10am

(signalled by the Vera Bright memorial rocket launch.)



Presentation in the evening in the Beaufort Arms garden with Barbecue and Entertainment



all proceeds to the Methodist Church Window Appeal



Live footage of tournaments gone by...

Come and help us celebrate 25 years of "style", characters and laughter!

Match Report from Ed Riddington on the game between Hillesley and the Gentlemen of Hawkesbury on 01 June 2014

HILLESLEY TOP SCORE IN BOTH INNINGS AS GENTS COLLAPSE IN STYLE

He seemed to stare with that wide and immense stare embracing, condemning, loathing all the universe. I seemed to hear the whispered cry, 'The horror! The horror!'

- Joseph Conrad: Heart of Darkness

So Marlowe relates the dying words of Mr Kurtz, who had presided over a lifetime of colonial brutality in the African wilderness. Goodness only knows what Kurtz would have said had he witnessed the Gents' batting display against Hillesley on the first Sunday of June.

Selection controversies abound at this, the highest level of the game and there was much speculation concerning the absence of Howard Bradley. The official story was that he was at a 'big lunch' on Back St. However, official sources have confirmed that Paul Downton, MD of the England and Wales Cricket Board, had been approached, encouraged and - in some cases - bribed by a number of players to officially terminate Bradley's central contract. Sometimes it is quite obvious that it isn't going to be your day. For Dean Simmonds this was most certainly the case. Arriving late on the pitch, following a frantic but vain attempt to find his abdominal protector, our intrepid wicketkeeper managed to take a blow to the groin from the very first ball of the match. It provided an initial taste of the pain that was to

come.

Winning the toss, the Gents took to the field and instantly took wickets thanks to the unnerving accuracy of Ollie Setterfield and the wayward genius of Tom Weston. After six overs, and with half of the Hillesley team back in the pavilion, the Gents were fairly upbeat about their chances of victory. Sadly our mood was soon to change as a succession of our own first XI took turns to take the initiative away from us. Not even the crafty spin twins, Bernie Evans and Adam Hanney, could manage to make a breakthrough as Hillesley piled on the runs. Eventually Ed Riddington took a brace of wickets and Hillesley were dismissed for 185.

Our reply was less impressive. Foster was bowled by a grubber from a lad known as Tommy Zoom. Will Carr, Weston and Freddie Marshall soon followed as wickets began to tumble at an alarming rate.

Cricket historians are only too familiar with the names of great players who failed to score in their first match in the top flight. Victor Trumper, two of the Grace brothers, Sir Len Hutton, Michael Atherton, Ken Barrington,

Allan Border and Graham Gooch all fell for a duck when they first made it to the big time. Now they can add Richard Thomson to this impressive list, his debut for the Gents ending after the ball clipped his off stump. Barry Wright, soon followed, one of 14 players in the match to be bowled. Not even Simmonds, recovered from his earlier episode, could arrest the flow of wickets and when Riddington was out - his first dismissal since 2011 - the match was over. The Gents had managed an inadequate 95 all out. The highest scorer in our innings was Mr E.X.Tras, who scored 6 more than our next highest scorer, Will Carr. Horror indeed.

If you enjoy cricket and are interested in playing please contact Bernie Evans on 07583 597 996 or Dean Simmonds on 07773 859249

Friends of Guiding News

Friends of Guiding will be having a stall at **Hawkesbury Show**, to promote what they do-please drop in and say hello and find out more Friends of Guiding are parents, relatives and friends of members, or Girlguiding members themselves, who:

- support the aims of Girlguiding
- actively work to help their local units

The aim of each group is to help local Leaders or Commissioners, e.g. by fundraising, providing resources for events or establishing contacts with other local organisations.

They will also be holding their popular **Jumble Sale** at **Badminton Village Hall** on **Saturday 18th October** — there's always a bargain to grab!

Parents please be aware

We've received several reports of children and older teenagers playing "chicken" with vehicles on Sandpits Lane/Birgage and down Highfields Lane.

They are daring one another to push their scooter or bike's front wheel out in front of approaching cars, at the last minute. They're also doing this behind reversing vehicles. Several drivers have had close calls and been very unhappy.

Please can parents have a word before there's an accident or tragedy, especially as the summer holidays are upon us?

There are large numbers of tractors and trailers, combine harvesters and bailing machines constantly up and down the village at this time of year, who definitely WON'T be able to stop as quickly as a car or van.



**Hawkesbury Cricket Club
Autumn Colours Walk**

Join us for a guided tour of those secret places in Lower Woods and the surrounding areas.

Followed by a lunchtime BBQ at The Malt House (Opp Hawkesbury Church)
Meet at Hawkesbury Church 10.00am
Saturday 25 October 2014.

To book your place contact Peter Setterfield on 238307 or Bernard Evans on 294202

World Cup Competition

Many thanks to all who took part
First Prize of £100 won
by Jes Rutter

£75 donated to the Senior Citizen Christmas Fund

Full results on the wall
in The Beaufort

Well done to Mick for organising yet another great fundraiser and source of banter over the last few weeks! -Ed

Summer Skittles

Congratulations to Martin Gardener, who last week scored an amazing 71 in 6 throws, three spares and three 9's.

This is the highest ever score in my records that started in 2002, and in earlier years that we used to play 7 legs.

For the record, Martin was the top scorer in 2013 and in 2012 (only joint this time) and also in 2008.

Well done !!!

Thank you!

On behalf of the Hawkesbury Show Committee, thank you to Louise Roberts and Joan Yuill for their marvellous donation of half of the proceeds from their sponsorship for the HU5K, £56.50.

Thanks also go to the Hawkesbury Parish News for once again generously donating the cost of printing the Show Schedule. This allows all proceeds from its sale to be ploughed back into the running of the show.

Dick Blundell, Hon Treasurer

The Fleece Inn, Hillesley

A thriving, friendly local pub, under community ownership – a Free House offering local real ales



Open from midday, 7 days a week



Good quality food at sensible prices available lunchtimes and evenings. Parking, Beer garden &, play area.

'Panda', Craig and the team would love to welcome you to The Fleece

www.thefleeceinnhillesley.com

01453 520003

M G COUNTRYSIDE DEVELOPMENT

Fencing, Tree Surgery, XC courses,
Landscape Gardening, and Fire Wood

Miles Batten

07866486808

Giles Bleaken

07976562323

Website:

www.m-g.org.uk

Email:

miles@m-g.org.uk

Based at Upper Chalkley Farm, Horton

Other jobs available upon request

Hawkesbury Cricket Club

Fixtures End June & July 2014

Date	Team	Home	vs	Away	Start
July					
26-Jul	First XI	Hawkesbury CC		Fairford CC - 1st XI	1.00pm
27-Jul	The Gents	The Gentlemen of Hawkesbury		The Old Ship	2.00pm
August					
02-Aug	First XI	Churchdown CC - 1st XI		Hawkesbury CC	1.00pm
09-Aug	First XI	St Stephens CC, Cheltenham - 1st XI		Hawkesbury CC	1.00pm
16-Aug	First XI	Hawkesbury CC		Dymock CC - 1st XI	1.00pm
17-Aug	The Gents	The Gentlemen of Hawkesbury		North Nibley	1.00pm
23-Aug	First XI	Haresfield CC, Gloucs - 1st XI		Hawkesbury CC	1.00pm
30-Aug	First XI	Hawkesbury CC		Kings Stanley CC - 1st XI	1.00pm
31-Aug	The Gents	The Gentlemen of Hawkesbury		Staple Hill	2.00pm

If you are interested in playing at any level please contact George Setterfield on 07557 959097 for the first team and Bernie Evans on 07583 597996 for the Gents

Summer Skittles 2014 July Fixtures

July 28th	6 v 2	4 v 1	5 v 8	7 v 10	08:30
August 4th	1 v 2	6 v 3	10 v 5	8 v 4	08:30
August 11th	1 v 6	2 v 8	5 v 7	3 v 4	08:30
August 18th	1 v 10	2 v 4	5 v 3	8 v 7	08:30
August 25th		10 v 3	6 v 8	7 v 2	08:30
September 1st	1 v 3	4 v 7	10 v 6	2 v 5	08:30

Teams

- 1 Cream Teas
- 2 Beaufort Pingers
- 3 Rats Pack
- 4 Old Foxes
- 5 Hornets
- 6 Brats
- 7 Spooners
- 8 Winkers
- 10 Hillbillies

Bank holidays
Alley unavailable
Catch-up week



♠ ♥ BRIDGE ♦ ♣

- Do you want to learn how to play this most stimulating and social of card games? Or do you already know the basics, but want to improve?
- I will be giving lessons this autumn, at both levels. My courses are designed for anybody who wants to have fun, learn an enjoyable hobby and make new friends.
- Come on your own or with a friend, you'll be assured of a warm welcome.
- For details, contact Ian Cooke:
 - 01666 890261
 - tresham.bridge@gmail.com



CHIM-CHEROO PROFESSIONAL CHIMNEY SERVICES

- Woodburners, open fires, Agas etc
- Member of the Institute of Chimney Sweeps
- Fully insured
- CCTV inspections
- Blockages removed
- Safety certificates issued
- No mess

Hire a lucky sweep for your wedding!

Richard Stone
07805 330 961
chimcheroosweep@yahoo.co.uk
24 Gloucester Street, Wotton-under-Edge, Gloucestershire, GL12 7DN



Hayley Jackson MCFHP MAFHP Foot Health Professional

A small well established business based in Brimsham Park, Yate. A full range of Foot Health Treatments including:

- | | |
|-----------------------|--|
| • Nail Cutting | • Corns and callus |
| • In growing Toenails | • Heel Fissures (<i>Cracked Heels</i>) |
| • Verrucae | • Nail conditions |

Tel 01454 314460/07846452000

www.hjtherapies.co.uk / Email: hayley@hjtherapies.co.uk

Home Service now available
Introductory offer - £10 off your first treatment

SHOW TIME

I hadn't lived in Hawkesbury Upton very long before I realised the importance of the annual Horticultural Show in the village calendar. Since I moved here in 1991, I haven't missed a single Show, and I always arrange my summer holidays to make sure I'm back in time to prepare for it.

I've put plenty of entries into the Show over the years and won a handful of prizes in categories as diverse as crochet, hen's eggs, jam, wine and - my favourite prize of all - the oddly-shaped vegetable (sadly no longer in the schedule).

I've been on many floats, from Youth Club's Global Warming in the 1990s (arctic scene at one end, tropical island at the other) and St Trinians, to more recently the Lion, the Witch and the Wardrobe with After-School Club and Edinburgh Zoo's Giant Pandas with my daughter and her friends last year.

It's always exciting to win a prize, even third in a category in which there are only two other entries, but you don't need to win prizes to enjoy the Show. The most satisfaction comes simply from feeling like you're part of a huge, traditional act of community.

It's also rewarding to serve on the Committee, which I did for 13 years. I'll never forget seeing at one meeting an elderly judge demonstrate his set of brass shallot-measuring rings, as used by his father before him. The Show is living history.

But the most unexpected buzz relating to the show struck me only recently, when, at my daughter's 11th birthday party, I was chatting to her friends' mums in our garden. One of them, relatively new to the village, was taking photos of the children's antics.

"You ought to enter that into the Village Show," I remarked, admiring a particularly good one.

"Spoken like a true Hawkesbury villager!" said another mum, whose family has been in Hawkesbury for generations.

23 years after moving here, I've finally arrived. Happy Show Day, everyone!

Debbie Young

Website: www.authordebbieyoung.com

Twitter: @DebbieYoungBN

Under The Edge Arts Wotton-under-Edge

Saturday 2nd August: 10-11.30 am

PUPPET MAKING FOR TEENY WEENIES:

With plenty of clear instructions and a variety of materials, we will form and decorate the puppets. We will be using scissors (with help from your grown up) paint, glue, feathers, glitter and anything else you might need to create the character you want to. Your puppet might be a person, an animal, a character from a book, it's up to you! There will be lots of puppets to look at for ideas. There will be time to play with the puppets and at the end of the session you will be able to take your puppet creations home. Age 3-5 accompanied by a grown up. To book, please contact Emily: 07581557363. The workshop will cost £10 including materials or £7 for concessions.

Saturday 2nd August: 1 - 5 pm

PUPPET CLUB for Ages 7-12 years

In this workshop you will make a marionette puppet, using an array of materials and some expert guidance. You will explore how to bring the puppets alive: give them personalities and practice manipulating them. After constructing the basic puppet form, puppet clubbers will be free to create the puppet's character using the array of materials provided. At the end they will have a wonderful puppet to take home! Age 7 -12 years. To book, please contact Emily: 07581557363. The workshop will cost £20 including materials or £15 for concessions.

Wednesday 6th August 2014:10am-3pm

CHILDRENS' MUSICAL THEATRE WORKSHOP

Ballyhoo is a well-established dance and theatre school based in Chalford, It's run by Julie and Heidi, who are both ex - performers from the West End and Broadway. The day will start with a few ice breaking games, introducing the children to Julie and Heidi and to each other. There will then be a warm up of bodies and voices, so the class is ready to learn a song and dance from a current Musical. After that, there will be some acting followed by a small presentation at 3pm for parents, siblings etc. The children will sing, dance and act, but most importantly have fun and make new friends in a safe, controlled environment. For more information and to book, please email: ballyhoochalford@gmail.com or call 07970262538. Age 5-12. Cost for the workshop is £25 per child with discounts for siblings.

HOME COMPUTER PLAYING UP? NEED SOME HELP? DON'T DESPAIR!

For help with:

- Windows 98, Me, XP, Vista and 7 and 8
- The Internet, Wireless Router Setup
- Hardware Upgrades and Repairs
- PCs Custom Built to order

No problem too small or too large!

Contact: Lloyd Buckingham

Tel: 07940 155064

or 01454 260504

Email: lb_cs@hotmail.com

LB Computer Services



**YOUR LOCAL, LOW COST,
HOME COMPUTER REPAIRER**



theauctioneer.biz
PROPERTY AUCTIONEERS

Nick Cragg FRICS FNAEA

01454 321339

Specialist Property
Sales Lettings Consultancy
South Gloucestershire

www.countryproperty.co.uk

The Super Quiz ??DEFINITELY!

Congratulations to Barry Yuill for organising and presenting a truly 'Super Quiz' on Friday 7th July in the skittle alley at The Beaufort Arms, to raise money for the Guides. He was very ably assisted by Louise and Joan in their waiter's attire. Questions were challenging, but a bit different to the usual purely factual recall questions that are typical of most quizzes as it included rounds to test our senses as well! Our taste buds were put to good use in the cheese identification round, hearing was tested in a music round (presented by Adrian) and our sense of smell was challenged by the scrunch-and-sniff herbs and spices in little bags. Brilliant!

Thanks Barry, for such an innovative quiz. Some mutterings were heard suggesting "It's a bit hard", and when our team got a 4 out of 10 on the first round, we were worried too, but the brain cells obviously rallied and most team's final scores were very respectable. The guides made a profit and everyone had a fun. Thanks again, Barry and I'm looking forward what you will come up with next year!

Vicky Rispin

Piano, Classical Guitar, and Maths/ Physics/Chemistry tutoring in Hawkesbury Upton

**£12.00 an hour or £6.00 for 30 minutes.
Call Will Broad on 01454 238 779.**

I have grade 8 in piano and classical guitar, and grade 5 music theory. Completed A levels in Maths, Physics and Chemistry this year.

For more information or any questions please phone me.



Show Raffle Tickets available!

Hawkesbury Show raffle tickets are on sale now at Hawkesbury Shop, Hawkesbury Post Office and France Lane Farm Shop. Get yours before they sell out— for the first time ever they actually did on Show day last year!

Dick Blundell



FOR SALE

An unwanted gift for sale and absolutely brand spanking new and unused:-

STOWAMATIC GXT Electric Golf Trolley plus accessory pack

Comprising:-

- 36 Hole battery and charger.
- Speed control switch.
- LED Display Screen.
- Independent 10m, 20m and 30m distance settings.
- Quick release folding mechanism.
- Detachable Sport wheels.
- Carry Bag.
- Rain Cover.
- Umbrella Holder.
- Scorecard Holder.
- Drinks Holder.

£175 complete.

Please contact Neil Fozard on 01454 238 281.

MissDis.co Mobile Disco Hire
www.MissDis.co.uk

Quality service and competitive rates

Raising funds for World Challenge

abbie@missdis.co.uk

01454 326155 | 07531 377077



MANGA PORTRAITS

Japanese anime style Caricature portraits drawn by hand from photos
abbie@hawkesburycommon.co.uk
01454 326155 | 07531 377077

Raising Funds for Ecuador World Challenge 2015. Sign up to my easyfundraising.org.uk page and help me raise money simply by shopping online with your favourite online retailers.



The 4 Door Challenge

Show Day - Saturday 30th August 2014
Start 11am at The Beaufort Arms
Hawkesbury Upton

Hope you've been training
To remind you

Start Door 1, The Beaufort Arms

Door 2, St Mary's Church

Door 3, The Somerset Monument

Door 4, The Fox Inn. **Finish**

Anyone can take part walking or running take the Challenge.

Application Form

available in The Village Shop

call or e-mail

Carol Fowler 01454 238292 or kenfowlerbds@uwclub.net

Hawkesbury After School Club



Monday to Thursday 2.30 to 6pm

All children from Hawkesbury and neighbouring schools are welcome to come along and enjoy our activities. We aim to provide quality childcare at an affordable price and to offer a place where children can play freely and interact socially in the care of trained playwork staff.

If you book regular sessions in advance the price is £9 for your first child and £6 for each sibling. If you would like to book your child in for a one off session, the cost is £10 per session for the first child with siblings costing £7. These sessions are subject to availability.

All sessions can be booked by either dropping in to a session and having a chat with Louisa, our senior playworker, calling the ASC mobile on 07527 224741 during club hours, or call the school office during school hours.

If you would like to know more about After School Club call me, Kim Anderson on 01454 238799 and I will be happy to help.



Looking for more living space?

A Blackbird Garden Studio is the perfect solution.

- Ideal for home office, art/music studio or teenage hangout.
- Contemporary designs – tailored to your needs by a local company.
- Fully insulated and low maintenance.



What will you use yours for? Call Martin now for further details

01454 238108 / 07974712083 - <https://www.facebook.com/BlackbirdInteriorsLtd>



**HAWKESBURY UPTON
TENNIS CLUB
NEWSLETTER NO 9**

Following our Open Day on Sunday 6 July, we were delighted to welcome our new member who has shown that, after 25 years away from tennis, the bug can really bite you again. I

won't name names but she has hardly been off the courts since and we are delighted to welcome her enthusiasm to HUTC. By the way, what was all that nonsense about not being able to serve?

So why not dig out your trainers and come up to a Club Night; you never know, you might enjoy it so much you want to join us too. Even if cricket is your passion [you know who you are], you might find tennis equally rewarding! Don't just think about it - come on up. Some of us even play in the pouring rain because, once you're soaking wet, you might just as well stay up there and enjoy the exercise!! Well done to the true stalwarts who make the effort. [Mondays and Thursdays 6.30pm till dark.]

If you want some extra coaching please contact ELAINE to book a place - **01454 315023/07725165181** or email elaineweightman@btinternet.com

Below are some dates for your diary and details of Elaine's coaching sessions with special emphasis on the school holidays; fun for all the family: :

<p>HOLIDAY EXPERIENCE FOR ALL THE FAMILY (no age barriers) COME & TRY TENNIS MONDAYS FROM 28TH JULY-18TH AUGUST FROM 10am-4pm. GET IN TOUCH FOR THE HOURLY TIMETABLE. Elaine will be available organising various activities throughout the day. Minimum £3 to come and play £6 for coaching.</p>	<p>SCHOOL ESSENTIALS Coaching Get to grips with the game SATURDAYS U11s & U14s 10.30-11.30am FRIDAYS 3.30-4.15pm.</p> <p>AUGUST MATCHPLAY TOURNAMENTS From 10am. U11s & U14s MONDAYS August 4th, 11th & 18th Entry £3 singles. Call ELAINE to book 01454 315023/07725165181 or email elaineweightman@btinternet.com</p>	
<p>ADULT ESSENTIALS MONDAYS 3-4PM SATURDAYS 11.30-12.30 Match play drills & technical help for those already keen players. And help for those with little or no experience.</p>	<p>All hourly courses: £25.60 - 4 wk block (£6.40) or £7 on day. All 45min courses: £20 - 4 wk block (£5) or £5.50 on day</p>	<p>Call to arrange your own 1:1 or group to suit you and your friends & family. 4 wk blocks do not need to be consecutive.</p>

Tricia Perris - HUTC Publicity Officer [01454 294768]

HAWKESBURY SHOW 2014
Show schedules and pre-pay
Show tickets are available
to buy NOW from
the Village Shop and
the Post Office

A Thought by Ann Harris

Success is getting what you want.
Happiness is accepting what you get.

STORAGE
Secure dry storage units
in solid Cotswold stone barn
Domestic only
Minimum 2 months
Tel: 01666 840205

Dog Harmony
Dog/Puppy Training, Behavioural Problems
Homevisits, Socialisation,
Dog Walking Service
Contact Je-An: 01454 238145 / 07540336508
email: info@dogharmony.co
www.dogharmony.co

Letter from the Vicar – August 2014

'The small creatures chirp thinly through the dust, through the night'. TS Eliot

Dear all,

Holidays are upon us again. With the annual ritual of packing the suitcase, deciding what to take and what not to take, going somewhere unfamiliar, sleeping in a different bed, waking to unusual smells, sounds and tastes.

All this in order to should recharge our batteries. The derivation of the word holiday is of course Holy Day. In times past, Holy Days were built upon the sacred memories of apostles and significant religious events. Days that were considered so important to the community, that time was given for the workers to celebrate away from the daily grind.

There can be an element of holiness about the art of taking a holiday well. Leaving home and becoming a stranger has an element of detachment about it, such as letting go of daily routines. But we may have more time for thinking and reflecting. Packing a Bible is a good idea.

It is more likely that one hears the small creatures that 'chirp thinly through the dust, through the night' when one is on holiday, as one sits up late at night, or is up early, reflecting on the life we have been given.

With my every blessing,

Richard Thomson, Priest in charge

For: Christenings, weddings or renewal of vows.

Email: r.thomson@live.co.uk or Tel. 01454 219236

Benefice website) www.badmintonchurch.org.uk/

Church Services in August 2014 For St. Mary's Church

Date	Time	Service	Readers	Readings	Sidesmen
03rd Aug	0945 am	Morning Praise- Holy Communion	E Riiddington Rev Alveen	Gen 32 v 22 - 32	H Rogers
10th Aug	6 pm	Evensong	P Setterfield S Webb	Gen 37 1 - 4 12 - 28 Matt 14 22 - 33	L Fairney
17th Aug	0945 am	Morning Praise	J Oldershaw Rev Alveen	Gen 45 1 - 15	D Musty
24th Aug	6 pm	B.C.P. Holy Communion	Mr J O'Brien	1 Corinthians 4 9 - 15	B Salthouse
31st Aug	11 am	SONGS OF PRAISE AT THE SHOW GROUND			
7th Sept	6 pm	Evensong	A Craig J Gardener		B Stephens

If you are unable to attend please telephone Linda Fairney: 01454 238553

Should you wish to speak to Rev Richard Thomson call 01454 219236 or Revd. Alveen call: 01666 890 548

Church Cleaners:

L Fairney
H Rogers

Church Flowers:

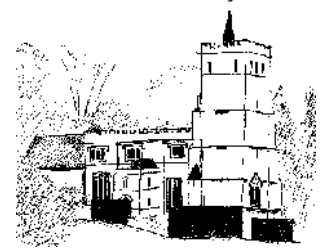
L Fairney

PLEASE NOTE DIFFERENT SERVICE TIMES AND THE CHANGE OF VENUE 31st AUGUST

St Mary's Church News

Churchwardens Mrs Linda Fairney 238553 & Mrs Mary Davies 238657
Keys for cleaners/flowers/church sitters please contact Mary Davies 238657
if possible the day before to arrange for collection.

*"May the words of my mouth and the meditation of my heart be pleasing in your sight,
O Lord, my Rock and my Redeemer."* Psalm 19 : 14



Since it is now the beginning of the holiday season, there is very little to report which is not already known about

The service to commemorate the start of World War I, held at Badminton on 29 June, was very well attended. St Mary's choir contributed substantially to the proceedings with their very professional singing, and Simon Bendry gave an interesting talk focussing on the men from the benefice who went to war, many of whom did not return. The names are very familiar to us in the villages, and this was a fitting tribute to them, with the British Legion in attendance

We shall, as usual, be opening St Mary's every Saturday and Sunday afternoon from 2.0 pm to 4.0 pm, from July through to the second Sunday in September. Volunteers are always needed for this, an opportunity for people to catch up with small tasks, or with reading, or just reflecting. Please think of coming to sit in the church on one of these occasions, to meet visitors and tell them about the church – you don't need to be a churchgoer. Volunteers please contact Betty Salthouse on 238410

As mentioned in last month's Parish News, we shall be holding a Songs of Praise service in the Show marquee on Sunday 31 August at 11.0 am. Come along and join in with your favourite hymn, it should be a joyful occasion for all the village. You will also see it advertised elsewhere in the Parish News

Dates for your Diary

31 August – 11.0 am – Songs of Praise in the Show marquee

Jennifer Oldershaw

Holiday Lodge for Rent



Luxury lodge, sleeps 6, 2 double bedrooms 1 en-suite, 1 twin bedroom and separate bathroom. Open plan kitchen/diner/lounge. The lodge has a beautiful view of the valley and woodland.

Weekly or short breaks (minimum 2/3 nights) available

Our lodge is located at Heritage Park www.heritageparkpembrokeshire.co.uk, Pleasant Valley, Saundersfoot. We are situated just a short woodland walk from the quiet coastal hamlet of Wisemans Bridge and set in the idyllic Pleasant Valley. Heritage Park enjoys unrivalled surroundings, renowned for its wonderful historical locations & mild climate.

Sorry: No pets. No Smoking.

If you would like any information/photos etc please contact Mike and Julie Gardener
email juliegardener@yahoo.com or telephone 01454 238535.



PUMPKINS NURSERY

Badminton and Tormarton

Nursery care and pre-school education
catering for children aged 1 – 5 years
Open all year 8am – 6pm

Nursery Education Grant funded sessions available

Forest School sessions run at both settings

For more information or to request a prospectus
contact Amanda Wallis on **01454 219400/218747**
Or visit our website: www.pumpkinsnursery.co.uk

DOLPHIN WATER SOFTENERS LIMITED

*Alderton 4, Priory Park, Priory Industrial Estate,
London Road, Tetbury, Glos. GL8 8HW*

Tablet Salt - £8.25 per 25kg bag

Granular Salt - £8.25 per 25kg bag

Block Salt (Harveys & Kinetico) - £4.70 per 2 x 4kg blocks

Available for collection from 1-5pm Monday to Friday *or*
delivery service available within a 10 mile radius of Tetbury
FOR MORE DETAILS – Tel: 01666 500065 Fax: 01666 504911

Email: njkind@btinternet.com

Benefice Services in August 2014

Sundays	3rd August	10th August	17th August	24th August	31st August
Readings	7th Sun after Trinity	8th Sun after Trinity	9th Sun after Trinity	St Bartholomew	11th Sun after Trin
	Genesis 32.22-31 Matt 14.13-21	Gen 37.1-4, 12-28 Matt 14.22-33	Genesis 45.1-15 Matt 15.10-28	1 Corinthians 4.9-15 Luke 22.24-30	
Great Badminton St Michael					
Little Badminton St Michael		1115 Matins C Mulholland		1115 Matins Richard Thomson	
Sopworth St Mary	6pm Evensong Celia Carter		1115 BCP HC Sung Richard Thomson		
Didmarton St Lawrence	1115 Matins Richard Thomson		8.30 BCP HC Alveen Thoresen		
Acton Turville St Mary		8.30am BCP HC C Mulholland	9.45 Family service Celia Carter	8.30am BCP HC Richard Thomson	
Boxwell St Mary					9.30am HC BCP Richard Thomson
Leighterton St Andrew	8.30am BCP HC Richard Thomson	11.00 Mattins Julian Wilson	1100 CW Communion Alveen Thoresen	6pm SAT EVE Richard Thomson	
Hawkesbury St Mary's	9.45am Sung Euch Alveen Thoresen	6pm Evensong Alveen Thoresen	9.45 family Service Richard Thomson	6pm BCP HC Alveen Thoresen	11 Songs of Praise Show Ground
Lasborough St Mary	9.30 Matins Mary Beresford	9.30am BCP HC Alveen Thoresen	6pm Songs of Praise Westonbirt RT	9.30am CW HC Alveen Thoresen	a
Oldbury-on- the-Hill St Arild					
Other Holy Days			Weekday services		
6th Aug	Wed Transfiguration	8.45am	Acton Turville	Tuesdays	8.45am Hawk 4.30pm Boxwell
7th Aug	Thur Name of Jesus	8.45am	Leighterton	Wednesdays	Acton T. Lasb (3.30pm)
29th Aug	Fri Beheading of John the Baptist	8.45am	It Bad	Thursdays	Leight Sopworth
				Fridays	Lt Bad Gt Bad

**To advertise your company
or services in the
Hawkesbury Parish News,
email us at :**

**[parishnewsads@
hawkesburyupton.com](mailto:parishnewsads@hawkesburyupton.com) and
reach a wide local audience.**

**EEZEEFLOW
DRAIN CLEARANCE**
Drainage problems – private and
domestic
NO JOB TOO SMALL
Regional Coverage
CENTRAL OFFICE
PHONE: 01454 238200
FREEPHONE: 0800 3893037
FAX: 01454 238713

Pest Problems
If wasps are a nuisance and
bugs are bugging you -

Ring Hazel on
01454 299227
To solve your
pest problems



BETHESDA CHAPEL

PARK STREET, HAWKESBURY UPTON

Services for the month of AUGUST 2014

Sunday August 3 rd	10.30am	Rev P Hopes [C]
Sunday August 10 th	10.30am	Alan and Linda Jenner
Sunday August 17 th	10.30am	Mr Steve Mills
	6.00pm	Evening Service with friends from Stapleton Road
Sunday August 24 th	10.30am	Mr Peter Knight
Sunday August 31 st	10.30am	Mr Peter Simpkins



No Tuesday meetings in August
Thursdays 2.00pm – Prayer for Revival



A young man received a letter from a solicitor informing him that he had been left \$50,000 in his Grandmother's will, plus her Bible and its contents. He was delighted! Especially with the money, but he was NOT interested in the Bible: it was put on a shelf and not opened. He gambled away all the money in no time at all and for years, he lived as a pauper, scraping for every meal. Finally, he had to move in with relatives. While he was moving his thing, he dropped the Bible on the floor and as it opened, £100 bills fell from every page. The man thought he knew everything about the Bible but sadly he did not, because it was unopened.

Many people today, never open their Bibles and miss out because they do not read them. You probably won't find \$100 bills inside but if you read, you will find life-changing words giving hope, not only for the now, but for eternity, as you realise what God has done for you in Jesus Christ His Son. Jesus had victory over death and Satan at Calvary. He died and rose again so that ALL who accept His offer of salvation will be made a new person (the Bible says a new creation) fit for the now and eternity with Him.

M.C. Coates (Chapel Secretary)

THE METHODIST CHURCH


BACK STREET, HAWKESBURY UPTON



Services for August 2014

Sunday August 3 rd	10.30am	Joining with Bethesda
Sunday August 10 th	10.00am	Mr K McNally
Sunday August 17 th	9.45am	Morning Praise at St. Mary's
Sunday August 24 th	10.00am	Local arrangement
Sunday August 31 st	11.00am	Rev Debra Chidakwa
Joint service in the marquee at the Showground		



 <p>IND PLUMBING AND HEATING</p> <p>BOILER SERVICE & SYSTEM MAINTENANCE</p>	<p>FOR OIL BOILER AND AGA/RAYBURN SERVICE</p> <p>Tel: 01666 504911 or 07867 434345 or email: info@indplumbingandheating.co.uk</p> <p>OFTEC REG. NO: C4634 Grant Boilers Accredited Installer www.indplumbingandheating.co.uk</p>	<p>LA LUNA AROMATHERAPY</p> <p>A holistic and natural approach to wellbeing </p> <p>Take time for yourself to de-stress from a busy and demanding life-style, regain vitality and enthusiasm for your wellbeing, optimise your natural healing processes and immunity</p> <p>Explore how natural therapeutic treatments can be effective in the treatment of acute and long term debilitating health conditions.</p> <p>Mary Chancellor LDCA, MIFPA Tel: 0759 200 6440 E: mary@laluna-aromatherapy.com www.laluna-aromatherapy.com</p>
--	--	--

District Councillor's Report

Planning & Development

Over the summer, South Gloucestershire Council is consulting on the Policy Sites and Places Strategy. This is a lengthy document allocating smaller sites for development and identifying the vision of local communities for their area. This includes policies on self-build housing; identifying green space, as well as identifying areas which land owners have put up for possible development.

The full document can be viewed on the Council website, where you can also respond to the consultation. This is part of the process which eventually will be heard by a Planning Inspector in the future.

Details of the public consultation events being held are available on our website at https://consultations.southglos.gov.uk/consult.ti/Draft_PSP_Summer2014/consultationHome

Full details about the Plan is available at:

www.southglos.gov.uk/policiesitesandplaces.

Southmead Hospital (Brunel Building)

The recent Public Health & Health Scrutiny Committee were given assurances by a Director from the new hospital regarding the many points made at the

committee. They reported that they were looking at the difficult issue of parking – one which was raised by Hawkesbury Volunteer Transport group, as well as the reported long waits in A&E. Patients had been surveyed and satisfaction with the new single rooms was high.

The West of England received £86m from the Government as part of the Growth Deal and will support growth in many of our high tech industries.

Unfortunately this does not include money for rural broadband. We continue to press with local businessmen for a better service and a meeting may be held in September – I will keep you posted.

Grants – The closure date for the next round of New Homes Bonus grants is the 3rd August. The grants process is being reassessed, but applications are still welcome.

Community Composting

Consultation closes at the end of July. It is likely the local site will close, with advice being given to HURG regarding applying for grants to support the site. If you would like to help. Please contact Pat Sherry 01454 238791

Cllr Sue Hope 01454 23873
sue.hope@southglos.gov.uk
07860239600

ELECTRIC PICTURE HOUSE WOTTON CINEMA

PICTURE HOUSE ENJOYS SUMMER SUCCESS

- Extra screenings of live events added
- **Billy Elliot: the Musical on screen in September**

The Electric Picture House Cinema in Wotton-under-Edge has enjoyed an increase in audiences compared to the same period last year, during its first three months under new management. Over April – June, during what has been a challenging time for cinemas across the country thanks to the sunny weather and competition of the World Cup, the cinema enjoyed a 16.5% rise in tickets sold compared to 2013. Gareth Negus, Managing Director of the Cinema, said, "The summer is always a difficult period for independent cinemas...so we're delighted with the level of support we've received from the local community."

A large part of the increase has been down to the popularity of live theatre events on screen. This success is continuing into the summer, with the first screenings of NT Live's *Skylight* and the Monty Python reunion shows selling out completely. Additional shows of both are now on sale, with the Pythons showing again on Friday 1 August at 7.30pm, and *Skylight* on Tuesday 12 August at 7pm.

Other live screenings coming later in the year include the National Theatre's new production of *Medea*, and the West End hit *Billy Elliot: the Musical* in September. The National's now-classic production of *Frankenstein*, starring Benedict Cumberbatch and Jonny Lee Miller, is returning to cinemas for Hallowe'en.



The Latin-inspired, easy-to-follow, calorie-burning, dance fitness-party™. Feel the music and let loose!!!

Monday 6.30 - 7.15 pm—*The Club Room, Gloucester Street, Wotton*

Tuesday 6.30 - 7.15 pm—*Horton & Little Sodbury Village Hall, Horton*

Thursday 6.30 - 7.15pm—*Charfield Memorial Hall, Charfield*

For more details contact:-

Andrea on 07970125353 or andrea.benson1@btinternet.com



Ladies!! Do you want to improve your posture, strength, mobility and stamina?

Then Join a Fitness League Exercise Class!

Monday 7.30 - 8.45 pm—*The Club Room, Gloucester Street, Wotton*

Wednesday 6.45 - 8.00 pm—*Almondsbury Sport & Social Centre, Almondsbury*

For more details contact:-

Andrea on 07970125353 or andrea.benson1@btinternet.com

Hawkesbury Parish Council

Planning Applications received :

App. No.	Address	Description	Comments
PK14/2109/F	Bramble Cottage High Street Hawkesbury Upton	Demolition of existing double detached garage and erection of 1no. detached dwelling with access and associated works.	See below
<p>The Parish Council are concerned with vehicle access at the narrowest part of the High Street.</p> <ul style="list-style-type: none"> • There is an opportunity to enhance the footpath by widening the pavement when restructuring the wall; at the moment it is very narrow at this point. • They would like to see the size and Scale in relation to Bramble Cottage and surrounding cottages in the conservation area. • The Parish Council are confused by the orientation under the Design and Access Statement (Natural Environment and Biodiversity) section. • Accommodating Motor Vehicles - part 2 The Parish Council wishes to ensure the access/exit to/from the sight will be improved (unable to see on the plans any increase in visibility) • Request the 850mm high Local Natural dry Stone Wall is conditioned 			
PK14/2125/F	Bramble Cottage High Street Hawkesbury Upton	Erection of detached garage	Pavement outside the property is very narrow; splays would provide a better facility for pedestrians. Ensure the replacement garage fits in; and the height of roof to be relative to the existing.
PK14/2361/TCA	Beaufort Cottage High Street Hawkesbury Upton	Works to remove 3no. field Maple Trees 1 no. Hawthorne tree and 1 cherry tree in the Hawkesbury Conservation Area	Replacement trees be like for like

Planning Decisions received:

PK14/1418/F	Pool House High Street Hawkesbury Upton	Change of use of Land from agricultural to residential curtilage (class C3) as defined in the Town and Country Planning (Use Classes) Order 1985 (as amended)	Approve with conditions
PK14/1466/F	The Old Vicarage Church Lane Hawkesbury	Erection of 2.4m maximum high replacement barn courtyard wall	Approve with conditions
PK14/1467/LB	The Old Vicarage Church Lane Hawkesbury	Repair and replacement of existing barn courtyard wall	Approve with conditions

Burlington Design Group

Gillian Osborne

2 Horton Road, Horton, South Glos, BS37 6QH
Tel - 01454 315313 Mob - 07931862069
e-mail - burlingtondesigngroup@talktalk.net

A friendly service offering bespoke curtains, loose covers, upholstery and every type of blind.

A wide range of fabrics available,
Established over 20 yrs.

Baby Sitting & Pet Care

Fund raising for...



Going on holiday? Need a night out? Then, no need to worry..

I am responsible, reliable and have experience of looking after young children and caring for pets whilst you are away.

I am available at weekends and some weekdays.

Call Libby on 01454 238118

Hawkesbury Parish Council (continued)

Planning Decisions received (continued):

PK14/1761/F	Tally Ho Chase Lane Inglestone Common	Erection of single storey front extension on front elevation to facilitate bay window and internal seating area to the study	Approve with conditions
PK13/3464/RVC APP/P0119/ A/14/2215352	The Stables Sandpits Lane Hawkesbury Upton	Appeal against the refusal of planning permission	Appeal allowed

Planning Decisions withdrawn:

PK14/0384/F	Land off High Street Hawkesbury Upton	Erection of agricultural forestry processing and storage building
--------------------	--	---

Parish Council Meeting

The next Parish Council meeting will be held on Monday 18th August 2014 in the upstairs meeting room in the Village Hall at 7.30pm.

Contact details for Hawkesbury Parish Council via:

Hazel Jones
Parish Clerk
2 Fox Close
Hawkesbury Upton
GL9 1EQ
Tele: 01454 238074
parishcouncil@hawkesburyupton.com

Bonfires

If you are having a bonfire, you need to be considerate towards your neighbours. Otherwise, your bonfire could be classed as a statutory nuisance under the Environmental Protection Act of 1990.

We recommend you find other ways of disposing of waste, such as recycling. With the increase in identity thief, people are increasingly starting to burn personal documents. South Gloucestershire Council advice is to purchase a shredder which is now readily available at a reasonable price.

If you go ahead with a bonfire, please follow this advice:

- Make sure the material is dry before it is burnt. This makes the combustion process more effective
- If a pile of waste has been there for some time, check there are no animals living in it
- Check the waste to make sure there are no pressurised containers or other items that are dangerous to burn
- Do not burn materials such as household rubbish, rubber tyres, paint, foam or anything containing plastic
- Do not start or encourage the fire using substances such as old engine oil, methylated spirits or petrol
- **Talk to your neighbours before having a bonfire, to avoid potential problems such as smoke blowing over clean washing or through open windows**
- **Check the wind direction before lighting your bonfire, to make sure the smoke will blow away from your neighbours**

Contrary to popular belief, there are no byelaws governing the time that you can have a bonfire. Again, the golden rule is that you must not cause a smoke nuisance.



**Don't get let down
by your oil supplier
on delivery or price**

Call Sodbury Fuels on 01454 315050
or visit www.sodburyfuels.co.uk



Holiday home for rent in Jumilhac le Grand, Dordogne, France

La Maison au Coin is a well-equipped spacious country house with private pool and enclosed garden. Central village location close to all village amenities, historic château, deer park, the river Isle and beautiful countryside. Sleeps 8-10. Ideal for two families sharing or groups of adults.

There is plenty to do and something for everyone: canoeing, walking, fishing, trim trail through the woods, panning for gold, rock climbing, tennis, horse riding, cycling, 'acrobois', wakeboarding! A wide range of activities and amenities are available right on the door step and the local bar, restaurant and boulangerie are only 2 minutes' walk away! For more information, availability and prices please visit the website or our Facebook page: <http://www.ownersdirect.co.uk/accommodation/p8122872>, <https://www.facebook.com/lamaisonaucoin/info>, or 'phone Jane on 07790 888321.



2 Men Went To Mow Garden and Tree Service

Local Friendly and Reliable
Tree Surgery (NPTC Qualified)
All Types of Tree Work undertaken
Contract Grass Cutting
All Aspects of Garden Maintenance
Planting Beds and Borders Maintained
Shrubs and Plants Supplied
Pruning and Hedge Trimming
Garden Rubbish Removal
References Available
Free Estimates
Fully Insured

Tel 07956 311901
07557 365661
Email kev@2menwenttomow.co.uk

Friday 1st &
Sat 2nd August 2014,
7.00pm

Cider with Rosie
(in Camers garden,
Old Sodbury)

Open air production by Sodbury Players
at Camers garden, Old Sodbury. Tickets
£7.00 from Tel: 01454 324344 or
312223

Picnics welcome from 6pm
Bring chairs and rugs

Beautifully restored 18th century farmhouse,
Hautefort, Dordogne France

Available to let all year round. A very attractive and sympathetically restored former farmhouse. Sleeps 10/12 in 5 Ensuite bedrooms, generous living accommodation & private heated pool. Fully equipped to a high modern standard whilst retaining a wealth of original features. Set in the heart of the quiet hamlet of Lachaud surrounded by glorious open countryside but less than 10 minutes drive from local shops & restaurants. You'll be perfectly placed to explore this beautiful & historic area or just relax, unwind & indulge yourself!

Pets with responsible owners are most welcome!

For more pictures & further details visit: <http://www.ownersdirect.co.uk/france/FR19942.htm>
Email: bleaksandsal@hotmail.com or Tel: 07510516050 or 01454 238316

Westonbirt House Open Day and Gardens

10th August
31st August
11am - 5pm.

Tour guides available - tours depart on the hour. Entry £8, children under 12 free.

Shakespeare at Swinhay: The Comedy of Errors

Friday, 8th August at 7.30pm

Set once again in the stunning grounds of Swinhay House, Shakespeare's shortest play is a brilliant farce of mistaken identities, combined with a few undertones of the dramatic and sinister. A colourful and entertaining romp performed by the all-male cast of The Festival Players Theatre Company. Grounds open 6pm, play starts at 7.30pm. Please bring your own picnic and seating.

Booking essential. Tickets available from www.utea.org.uk OR from It Takes Two, Long Street, Wotton-under-Edge.



Gloucestershire Wildlife Trust

BUSHCRAFT: Food and Shelter

Mon, 04/08/2014 - 10:00am - 4:00pm

If you were lost or stranded we're sure that you'd be able to fashion some sort of shelter – but would it keep you warm and dry and would you get any sleep? Learn how to build a shelter on this bushcraft course.

And if you didn't have your camping stove, how would you cope with cooking? This one day course takes you through making camp, putting up shelters that will keep you warm and dry (with and without the help of tarpaulins) and preparing food and cooking with a campfire – allowing you to stay warm, dry and well fed!

BUSHCRAFT: Foraging and Natural Cordage

Mon, 11/08/2014 - 10:00am - 4:00pm

When you look at woodlands or fields what do you see – a lovely view? On this bushcraft course we'll teach you to see potential food sources, and you'll learn how to find and prepare them safely. You learn about edible, medicinal and poisonous plants, the 'laws of foraging' and how to harvest food in a sustainable manner. We'll also go through conservation and coppicing, make some elderflower cordial and learn how to make string and twine from natural materials – another very useful survival skill to have!

Book by phone: Tel: 01452 383333

Book by email: info@gloucestershirewildlifetrust.co.uk

Or online: <http://www.gloucestershirewildlifetrust.co.uk/>

Didmarton Flicks in the Sticks

Please note: No film in August

Horton Beer Festival

At Horton Social Club



Fri 15th August noon – 11pm
Sat 16th August noon – 11pm
Sun 17th August noon – 10:30pm

All real ales £2.00 a pint

Open to non members.
Entertainment over the weekend.

Camers - Sunday 27th July 2014

National Garden Scheme Open Day at Camers

Camers, Badminton Road, Old Sodbury, Bristol BS37 6RG - the public entrance to the gardens is in Chapel Lane. Enter through the field gate and drive to the top of the fields to park next to the garden. Chapel Lane joins the main A432 at the Dog Inn.

Gardens Open from 2pm to 5.30pm

Home made teas available

Admission Adults £5, children free

For further information please call 01454 322430.

www.ngs.org.uk/gardens/gardenfind

Westward Travel

(John & Laura Simmons)

TEL: 01453 521999

July

Weds 30th River Thames Boat Trip – Maidenhead to Windsor

(Booking Required by 12th July)

Adult

£26.50

Child

£20.50

August

Wed 6th Weston-Super-Mare

Sun 10th Ilfracombe

Wed 13th Weston-Super-Mare

Sun 17th Dartmouth

Wed 20th Weston-Super-Mare

Adult

£11.00

£16.00

£11.00

£16.00

£11.00

Child

£7.50

£10.50

£7.50

£10.50

£7.50

Theatre Trips to Bristol Hippodrome:

Tues 26th August Shrek

Weds 1st October Riverdance

Fri 2nd January Dick Whittington

Tues 10th February War Horse

Tues 3rd March Wicked

£44.50

£47.00

£35.50

£53.50

£58.00

£41.00

£43.50

£27.00

£50.00

£55.00

Book early to avoid disappointment!

Book at Hawkesbury Post Office or Westward Travel office in Wotton-u-Edge



Babysitting, Dog Walking and Pet Sitting



Natalie Atkinson	01454 238858	I am a reliable and experienced 16 year old available for babysitting on most week days (june to september), evenings and weekends anytime.
Cerys Bradley	01454 238761	19yr old, experienced babysitter available all day and/or evening for child minding or mathematics tutoring (up to and including GCSE level).
Caroline Carnegie	60 Highfields 01454 238918	16yrs old. Available for Baby sitting, Dog Walking and Pet Minding.
Charlie Carnegie	60 Highfields 01454 238918	14yrs old. Available for dog walking and grass cutting.
Caitlin Houlbrook	01454 238844 07779396639	I am 15 years old, a reliable and experienced babysitter, dog walker (I own a dog so can handle them very well) and pet minder. Available most days after school and weekends, or anytime in the school holidays.
Abbie Merritt	01454 326155 07531 377077	I am raising funds for my World Challenge trip to Ecuador in 2015. I am available to babysit most evenings and weekends. I am also able to offer a pet minding service - specialising in exotic pets. I am used to handling reptiles, amphibians, invertebrates, arachnids, and anything woolly, fluffy or hairy.
Katie Munro	01454 238 174	I am an 18 year old experienced babysitter (references can be supplied). I am reliable and trustworthy and love working with young children. I am available anytime - during the day, evenings or weekends.
Libby Musty	01454 238118	I am 18 years old and have had a lot of experience babysitting for a number of families in the village as well as looking after a variety of pets - from dogs, cats, ducks, and chickens whilst their owners are away.
Jake Pember	01454 232997	I am fundraising for KLB World Challenge 2015 expedition to Ecuador. I am available for babysitting, dog walking, feeding pets or any other jobs - just ask and I'll see if I can oblige.



**Looking for
LEGAL
ADVICE ?**

EXPERT LEGAL
ADVICE

**FAMILY LAW
EMPLOYMENT
LAW
CIVIL LITIGATION**

**Appointments at a
place local to you—at a
time convenient for
you.**

Bevan & Emy Solicitors is authorised and Regulated by the
Solicitors Regulation Authority under ID Number 607770
Head Office No.3, Northavon Business Centre, Yate, BS37 5NH
office@bevanemy.co.uk

**BEVAN EMEY
SOLICITORS**

SOLICITORS WITH A
DIFFERENCE

Local Meeting
Offices -
Legal Advice
Clinics In Your Area



www.bevanemy.co.uk

Call Us for a FREE No Obligation chat
0333 3208 600 (Standard Rate calls)

Mikki's Mobile Clipping

07970 868751
mikki.ponter@btinternet.com

Dog Grooming

Horse Clipping



*** 10% discount ***
with this advert

Run for the community by the community
Offering you the latest in digital widescreen technology with Xpand 3D.

Monty Python Live (Mostly) Running time: 210 mins Cert 12A

For the first time in more than three decades, comedy legends Monty Python will perform live on stage from London's O2 Arena and broadcast to cinemas around the globe. At a combined age of just 358, John Cleese, Terry Gilliam, Eric Idle, Terry Jones and Michael Palin will once again perform some of their greatest hits, with modern, topical, Pythonesque twists. Monty Python are rightfully regarded as among the world's finest-ever comedians. They influenced a generation and revolutionised comedy. Their eagerly awaited reunion promises to be among the biggest live events of 2014.

Friday, 1st August 19:30

The Lunchbox (2013) Running time: 105 mins Cert PG

Middle class housewife Ila is trying once again to add some spice to her marriage, this time through her cooking. She desperately hopes that this new recipe will finally arouse some kind of reaction from her neglectful husband. She prepares a special lunchbox to be delivered to him at work, but, unbeknownst to her, it is mistakenly delivered to another office worker, Saajan, a lonely man on the verge of retirement. Curious about the lack of reaction from her husband, Ila puts a little note in the following day's lunchbox, in the hopes of getting to the bottom of the mystery. This begins a series of lunchbox notes between Saajan and Ila, and the mere comfort of communicating with a stranger anonymously soon evolves into an unexpected friendship. Gradually, their notes become little confessions about their loneliness, memories, regrets, fears, and even small joys.

Sunday, 3rd August 19:30

Mrs Brown's Boys: D'Movie Running time: 94 mins (Cert 15)

Big screen outing for the outrageous BBC character. When Moore Street market-trader Agnes Brown finds her livelihood under threat from a ruthless developer. She and her family embark on a campaign to save her stall, aided as only the Browns will be by a motley troop of blind trainee Ninjas, an alcoholic solicitor, and a barrister with Tourettes Syndrome!

Thursday, 31st July 19:30 Monday, 4th August 20:00 Wednesday, 6th August 20:30 Thursday, 7th August 14:00

GOS: Macbeth Running time: 155 mins

When three witches tell Macbeth that he is destined to occupy the throne of Scotland, he and his wife choose to become the instruments of their fate and to kill the first man standing in their path, the virtuous King Duncan. But to maintain his position, Macbeth must keep on killing - first Banquo, his old comrade-in-arms; then, as the atmosphere of guilt and paranoia thickens, anyone who seems to threaten his tyrant's crown. From its mesmerising first moments to the last fulfilment of the witches' prophecy, Shakespeare's gripping account of the profoundest engagement with the forces of evil enthral the imagination.

Sunday, 27th July 19:30 Thursday, 7th August 19:30

NT Live: Skylight Running time: 180 mins Cert 12A

On a bitterly cold London evening, schoolteacher Kyra Hollis (Carey Mulligan) receives an unexpected visit from her former lover, Tom Sergeant (Bill Nighy), a successful and charismatic restaurateur whose wife has recently died. As the evening progresses, the two attempt to rekindle their once passionate relationship only to find themselves locked in a dangerous battle of opposing ideologies and mutual desires. The highly anticipated production of David Hare's Skylight, directed by Stephen Daldry (The Audience), broadcast live from the West End by National Theatre Live..

Tuesday, 12th August 19:00

GOS: A Midsummer Night's Dream Running time: 182 mins Cert 12A

Hermia loves Lysander and Helena loves Demetrius - but Demetrius is supposed to be marrying Hermia. When the Duke of Athens tries to enforce the marriage, the lovers take refuge in the woods and wander into the midst of a dispute between the king and queen of the fairies. Shakespeare put some of his most dazzling dramatic poetry at the service of this teasing, glittering, hilarious and amazingly inventive play, whose seriousness is only fleetingly glimpsed beneath its dreamlike surface.)

Saturday, 16th August 19:30 Thursday, 21st August 19:30

[Find us on Facebook - Electric Picture House](#)

[Follow us on Twitter - @WottonCinema](#)

Information is correct at time of going to press.

Please call for the latest details.

Wotton Electric Picture House
 18A Market Street, Wotton-Under-Edge, Glos, GL12 7AE
 01453 844601 - general enquiries (during opening hours)
 01453 844401 - 24 hour recorded message



Vicky's Childminding
 Ofsted Registered Childminder
 Based in Hawkesbury Upton
 Full and Part time spaces available
 Please call Vicky Starling
 07742 827 863 or 01454 238 418

PAINLESS SPINAL TOUCH

POWERFUL GENTLE PROFOUND
 FROM THIS TO THIS



STRESS & STRAIN
 EXHAUSTION
 MALFUNCTION

EASE & FLUIDITY
 JOYFULNESS
 VITALITY

Restores the natural equilibrium by re-aligning the body with its centre of gravity. Release from pain and an increased sense of well-being inevitable follow.

ANGELA ECKLES 01454 238 894 / 07947862 622
 30 years experience in natural therapies

August Sudoku

Neil Fozard

For the uninitiated:-

to solve the puzzle, each row, column and 3x3 box must contain each of the numbers 1 to 9.

EASY !!

NOT SO EASY !!

			3	2				
	4		7			5		
9		7						1
	2	1		6	4			
						8		
	6	9		8	1			
1		6						7
	7			9			2	
			6	5				

		7						
					3	9	7	
4			1	7				
6				1		4	5	
		4	7		8			
3				4		2	9	
1			5	9				
						2	1	6
		2						

Answers to the July quizzes:-

'Easy'

6	9	8	7	5	1	3	4	2
3	7	2	6	4	8	9	1	5
1	4	5	3	9	2	7	8	6
9	2	3	1	6	5	8	7	4
7	5	1	8	2	4	6	3	9
8	6	4	9	7	3	2	5	1
4	3	6	2	1	7	5	9	8
5	8	9	4	3	6	1	2	7
2	1	7	5	8	9	4	6	3

'Not so Easy'

2	1	5	8	6	7	9	4	3
9	8	4	2	3	5	7	6	1
3	7	6	1	9	4	2	8	5
6	4	8	7	5	2	3	1	9
5	2	9	3	4	1	8	7	6
7	3	1	9	8	6	5	2	4
8	9	2	6	1	3	4	5	7
1	5	7	4	2	9	6	3	8
4	6	3	5	7	8	1	9	2



R&B VEHICLE SERVICES
Est. 10 years

01454 238700

REPAIRS, SERVICING
DIAGNOSTICS, BATTERIES
TYRES, EXHAUSTS
FOR CAR, 4 X 4 & LIGHT VANS
FREE LOAN CARS AVAILABLE
YOU CAN NOW BOOK YOUR MOT
ONLINE AT
www.mottetbury.co.uk



COST EFFECTIVE MAINTENANCE AT A FRACTION OF DEALER PRICES
CALL RICHARD OR BEN FOR FRIENDLY, RELIABLE SERVICE

- Physiotherapy
- Homeopathy
- Podiatry
- Chiropody
- Chiropractic
- Aromatherapy
- Reflexology
- Acupuncture
- Holistic Massage
- Sports massage
- Nutritional Advice
- Pilates Exercise Classes

TOLL HOUSE CLINIC

Freephone 0800 0936 362 Telephone 01454 32 22 32
www.tollhouseclinic.co.uk
47 Horse Street, Chipping Sodbury, BS37 6DA

Hardwood Logs

Dry, seasoned hardwood, barn stored.
Sold in dumpy bags
£55 per bag - 2 bags £100
Local free delivery



Call Tom Cole
Mobile: 07970911412
Home: 01454 238 896



EAST & SONS
Established over 100 years

PLUMBING AND HEATING ENGINEERS
CORGI REGISTERED GAS INSTALLERS
MEMBER FEDERATION OF SMALL BUSINESSES

'ASHDENE', HIGH STREET, HAWKESBURY UPTON
Tel/Fax: 01454 238353
Mobile: 07513 908985

Hawkesbury Contact List

Group	Contact	Phone	Website	Email
1st Hawkesbury Upton Guides	Louise Roberts Jane Bleaken	238628 232993		louise.roberts622@btinternet.com
After School Club	Louisa Tooker or Celia Rowlands	238629 or 232920		hawkesburyasc@hotmail.co.uk
Badminton Club	Roy Townsend	238397		roy.townsend3@btinternet.com
Bethesda Chapel	Mervyn Coates	01453 843771		
Brownies	Liz Howard	238417		lizhowardconsult@aol.com
Chipping Sodbury Police Station	Non-emergency: PC Mike Hart: PCSO Rich Gay: PCSO Sian Rolling :	101 07919628618 0750006433 07825388927	www.avonandsomerset police.co.uk	michael.hart@avonandsomerset police.co.uk
County Councillor	Sue Hope	238673		sue.hope@southglos.gov.uk
Cricket Club	Martin Gardener	238526	www.hawkesburycricket club.co.uk	martin.gardener@cemex.com
District Councillor	Sue Hope	238673		sue.hope@southglos.gov.uk
Evergreens	Mandy Clarke	01454 261436		
Friends of St Mary's	Pauline Setterfield	238307		pleensetterfield@hotmail.com
Gardening Club	Terry Truebody	238364	www.hawkesbury-gardening- club.org.uk	terry_truebody@bigfoot.com
Hall Booking / Village Calendar Secretary	Lorraine Rutter	07972 508621 01454 299761	www.village-hall.org www.hawkesburyupton.com	bookings@village-hall.org calendar@hawkesburyupton.com
Hawkesbury Horticultural Show	Keith Player (Chairman) Vicky Rispin (Secretary)	238463 or 0752 868 4267 232910	www.hawkesburyshow.org	keithjosieplayer@hotmail.co.uk vicky@coombeview.com
Hawkesbury Primary School	Louise Lewis (Head)	238629	www.hawkesburyschool.ik.org	hawkesburyuptonprimary. school@southglos.gov.uk
Hawkesbury PTA	Becki Spokes	238841 07503 097554	http://www.hawkesbury primarieschoolpta.com	debbiehawkesbury@googlemail.com
Hawkesbury Stallions Football Club	Simon Warren	01454 238070 07800844935	www.hawkesburystallions. co.uk	simonwarren@talktalk.net
Hawkesbury Upton Recycling Group	Neil Bennett	07914 908211		peterandpatsherry@tiscali.co.uk
Hawkesbury Volunteer Transport	Trip Coordinators: (<i>arrange transport to medical appts.</i>) General Enquiries:	0797 206 5665 0797 206 5496		alan_shewry@msn.com
HU5K	Debbie Young	01454 238401, 07594 717891	www.hu5k.org	debbiehawkesbury@googlemail.com
Local History Society	Barrie Hope	238673	www.hawkesburylocalhistory society.co.uk	hope.poolfarm@btinternet.com
Methodist Church Schoolroom:	Mrs Moira Coates	238479		
Methodist Church:	Rev Debra Chidakwa	01454 853965		
Neighbourhood Watch	Chris Rispin	232910		chris@coombeview.com
Parish Council	Hazel Bleaken	299227		hazel.bleaken@gmail.com
Parish News	Vicky Rispin (copy/subs) Fiona Rowe (copy) Jill Bendeaux (ads)	232910	www.hawkesburyupton. com/parish_news.html	vicky@coombeview.com parishnews@hawkesburyupton.com parishnewsads@hawkesburyupton.com
Pre-School	Louisa Tooker	07989 484 774	www.hawkesbury preschool.org.uk	enquiries@hawkesburypreschool. org.uk
Toddlers	Laura Chappell	07528 064321	https://www.facebook.com/ groups/670619976334853/	fihurst@outlook.com
Rainbows	Louise Roberts	238628		louise.roberts622@btinternet.com
RAOB (Bufs)	Iain Rae (Treasurer) Peter Webb (Secretary)	238702 294916		iainrae@uwclub.net susan.peter@uwclub.net
Royal British Legion	Sam Allen	238417		howrdallen@aol.com
Senior Citizen's Fund	Sam Allen	238417		howrdallen@aol.com
St Mary's Church	Linda Fairney	01454 238 553		william@fairney.wanadoo.co.uk
Tennis Club	Howard Bradley Tricia Perris	238761 294768	www.hawkesburytennis.org. uk	howardb@dexam.co.uk
Theatre Group	Jenny Harris	238411		harris@backst.freeserve.co.uk
WI	Gill Truebody	238364	www.hawkesburyand hortonwi.org.uk	terry_truebody@bigfoot.com
Youth Group	Mark Frankcom	238720		markfrankcom@gmail.com

We do our best to keep the contact list up-to-date. Any changes should be sent to parishnews@hawkesburyupton.com.